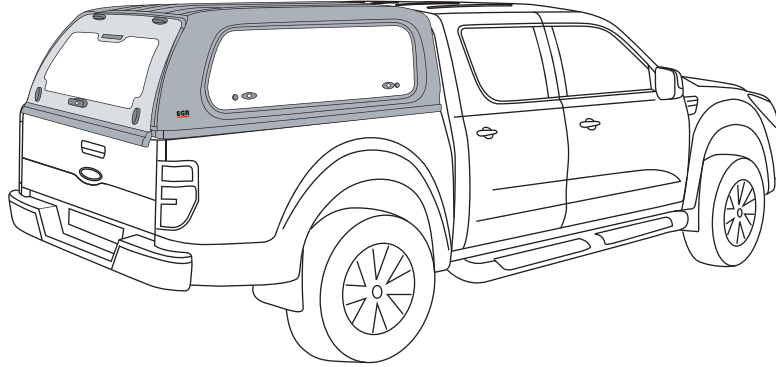


FORD RANGER PX

(2011 Production Onwards)

CANOPY INSTALLATION INSTRUCTIONS



Installation Time: Approx. 90 Minutes

Place these instructions in vehicle's glove box after installation is complete

Care Instructions:



Clean Canopy with a mild detergent and water solution.



Do not use abrasive cleaners or solvents.

PLEASE REFER TO PAGE 2, OF THIS INSTRUCTION FOR A LIST OF PARTS AND QUANTITIES.

IMPORTANT!

- Read instructions carefully before installation.
- It is strongly recommended that installation is conducted by an authorized dealer.
- This product must be installed exactly as specified in these instructions. Failure to do so may result in improper fit and/or retention.
- Recommend installation by 2 people. (4 people will be required to lift Canopy)



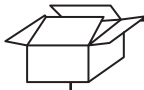
This Canopy is designed to suit the Ford Ranger PX vehicle.
Sports Bars MUST be removed & returned to Customer with all hardware components if required.
Cabin Guards MUST be removed & returned to Customer if fitted.
Product suits fitment with Ford Genuine bedliner (no cutting or mods required).

RECOMMENDED TOOL LIST - (Not Supplied in Kit)

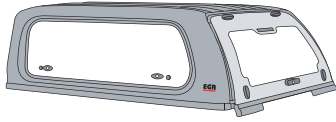
- **Loctite 243 thread locking liquid (IMPORTANT)**
- Phillips Head Screwdriver
- Medium Adjustable Spanner
- Side Cutters
- Sockets 10 & 13mm, Extension Bar and Driver
- Spanners 10 & 13mm
- Silicon Dispensing Gun
- Non Acetic Silicon (Neutral Cure)
- Spray Bottle (25% isopropyl Alcohol & 75% Water)
- Spray Bottle Water
- Torque Wrench - 0-20Nm
- T30 Torx Drive Screwdriver
- Non Permanent Marker
- Masking Tape
- Cleaning Cloths / Rags
- Steel Rule and Tape Measure
- Scissors (Sharp)
- Knife (Sharp)
- Squeegee
- File or Deburring Tool
- Drill & Ø5mm Drill Bit
- Engineers Scribe
- Rivet Gun for Stainless Steel Rivets
- Electrical tape
- Light Gauge Plastic Coated Draw Wire

PARTS CHECK SHEET

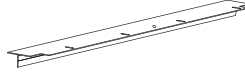
FORD RANGER T6 - CANOPY



PARTS IN MAIN CARTON



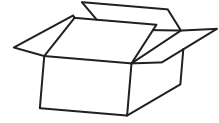
Canopy
Qty - 1



Rail Extrusion
Tub Stop
(ALUM0043-6)
Qty - 1



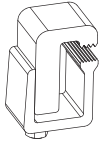
Lock Keys
(Attached to
Canopy Internal
Rear Door Handle)
Qty - 2



Fitting Kit
(KIT032464)
Qty - 1



PARTS IN FITTING KIT (KIT032464)



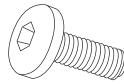
Kit - Rail
Clamps
(CNPY0007)
Qty - 6



M6x2.5mm Thick
Flat Washer
25mm OD
6.5mm ID
(WASH0201)
Qty - 5



M6 Nyloc Nut
SS304
(NUTS0016)
Qty - 5



M6x25 Screw
Alan Head SS304
(SCRW0845)
Qty - 5



M6x20 Screw
Hex Head SS304
(SCRW0028)
Qty - 2



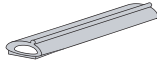
M6 Spring
Washer
(WASH0103)
Qty - 2



M6x1.2mm Thick
Flat Washer
19mm OD
6.5mm ID
(WASH0169)
Qty - 2



Rivet
(FAST0505)
Qty - 4



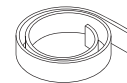
Bulb Seal 70mm
Cut Length
(MISC2600-1)
Qty - 2



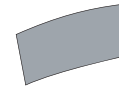
Primer Stick
(MISC1365)
Qty - 3



Clear Abrasion
Tape Roll
(TAPE0611-1)
Qty - 1



Bedrail Tape
20x8mm 5.5M
(TAPE0625)
Qty - 1



104x35mm
Black
Label Sticker
(LABL1441)
Qty - 3



Clear Tape Pad
50x30mm
Abrasion
Resistant
(TAPE0011)
Qty - 6



Blackout Decal
for Brake Lamp
(LABL1486)
Qty - 1



Rust Inhibitor
Satchel
(MISC2776)
Qty - 1



Alcohol Wipe
(MISC0052)
Qty - 4



Vehicle Wiring
Patch Harness Kit
(LOOM0043)
Qty - 1



Fitting
Instruction
(FIT-CP0057h)
Qty - 1



Cover Plate for
Brake Lamp
(KIT034498)
Qty - 1



PARTS IN VEHICLE WIRING PATCH HARNESS KIT (LOOM0043)



Vehicle Wiring
Patch Harness
(LOOM0043)
Qty - 1



Cable Ties
Short 200mm
Qty - 5



Cable Ties
Long 600mm
Qty - 7

VIEW LOOKING UP INTO LEFT FRONT CORNER

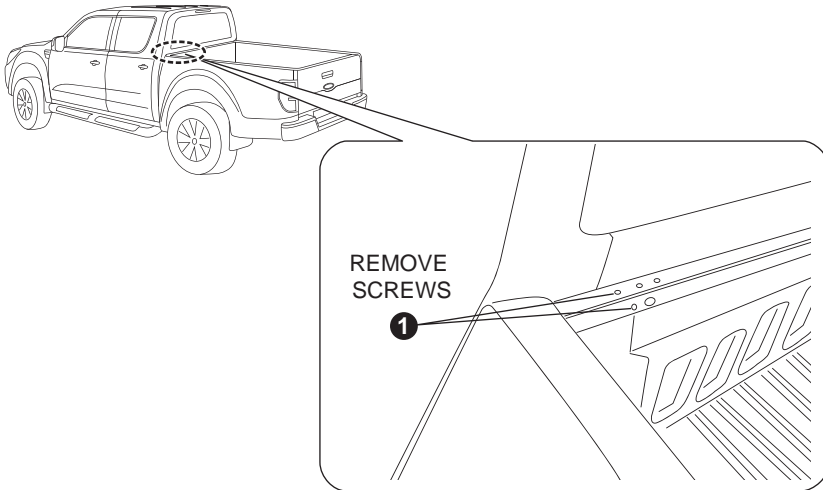


Diagram: 1 - REMOVING SCREWS FROM TUB

1. Remove four (4) screws in the front rail of the tub, repeat for other side. (ref. diagram1).

VIEW LOOKING UP INTO LEFT FRONT CORNER

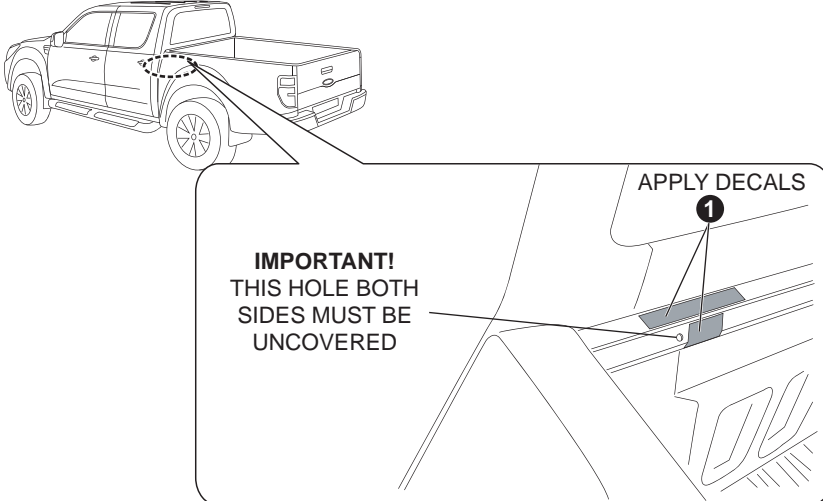
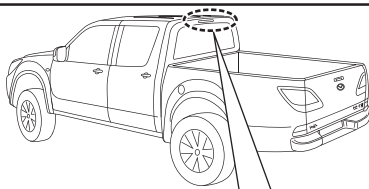


Diagram: 2 - APPLYING BLACK DECALS

2. Clean front rail of the tub where screws have been removed, using alcohol wipe (MISC0052). Using the black decals (LABL1441), cover the holes as shown on the diagram. One decal must be cut in half and used on the front facing hole. Repeat for both sides. **Note: The front outside hole must stay exposed.** (ref. diagram2).

STEPS 3-3b FOR 2011- BT50 and 2011 -2014 PX RANGER ONLY



SLIDE LAMP SURROUND OFF BY LIFTING FROM THE TOP AND PULLING FORWARD

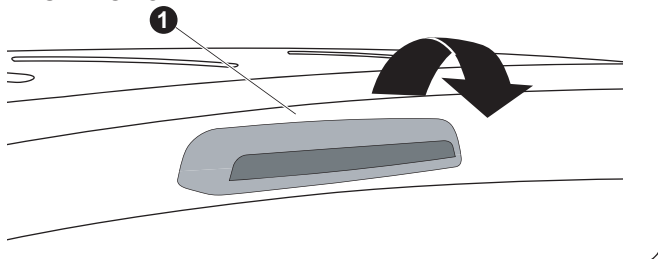
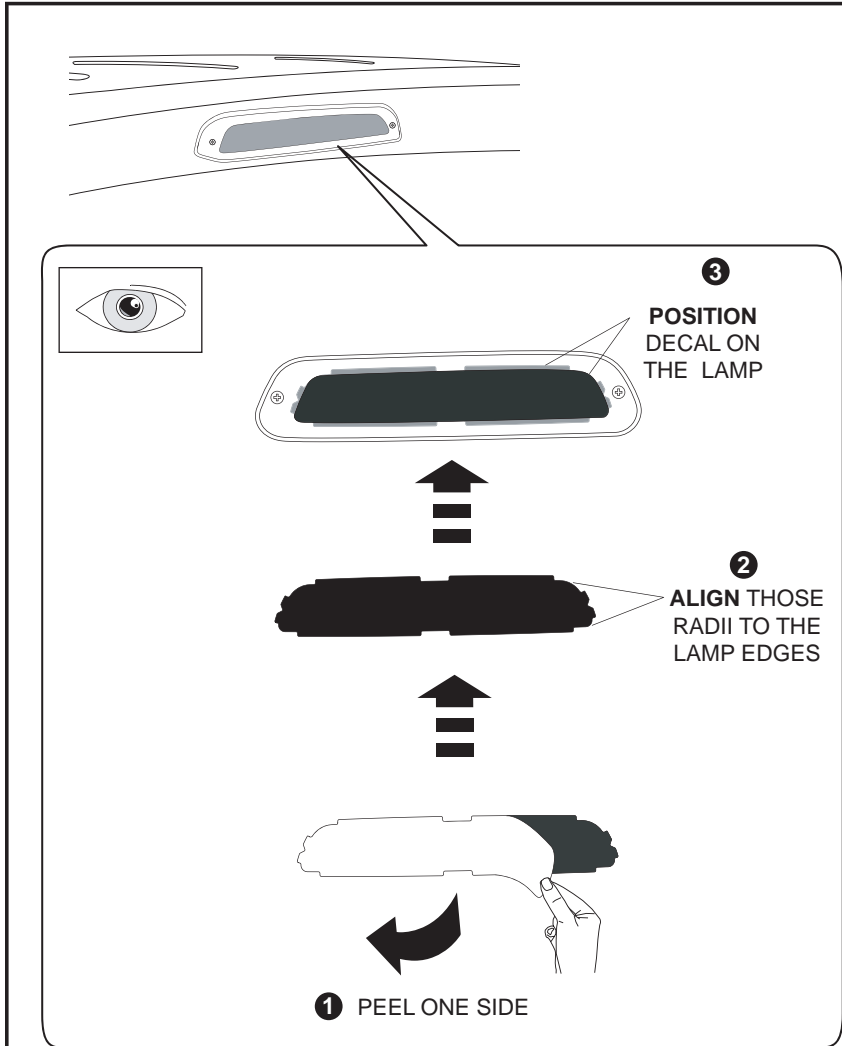
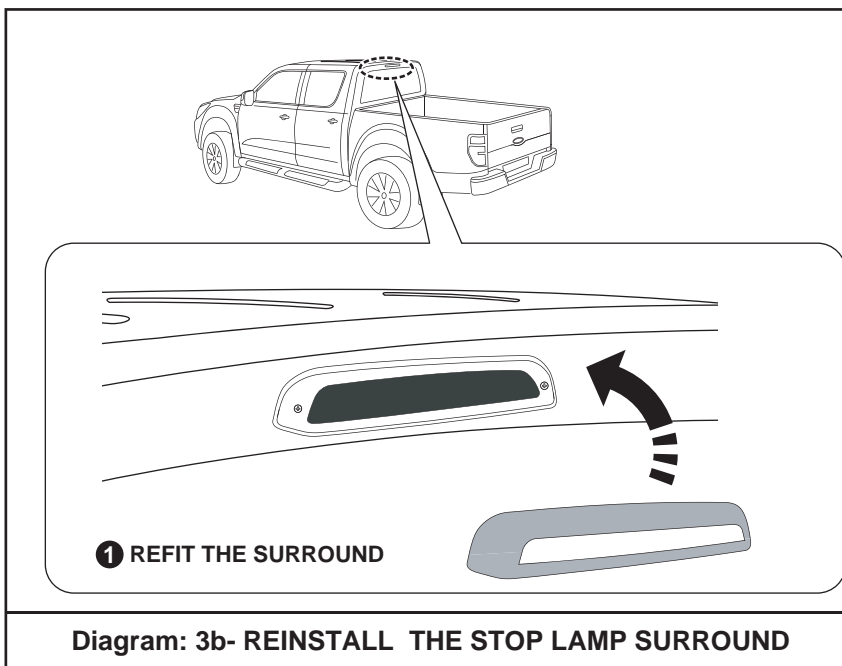


Diagram: 3 - REMOVE HIGH MOUNT STOP LAMP SURROUND

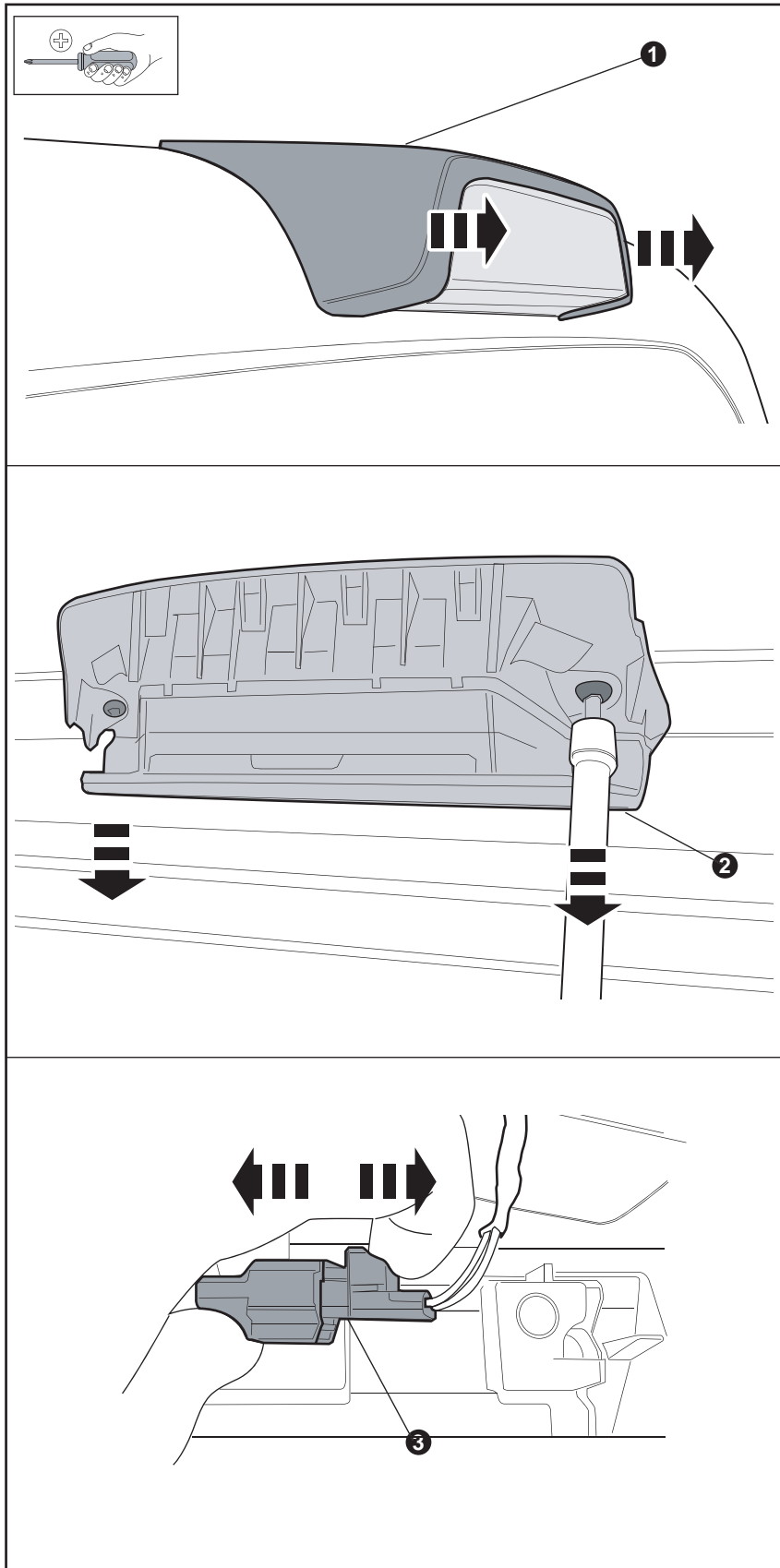
3. Remove high mount stop lamp surround, by lifting it from the top and pull forward. Clean and dry the surface. (ref. diagram3).

**Diagram: 3a - APPLY THE BLACKOUT DECAL**

3a. Remove backing paper from brake lamp blackout decal (LABL1486) at one side for only the first 50mm. Fold back at 45deg to expose adhesive. At one side align outside radii on the decal to the edges of the lens. Adhere first corner. Peel back remaining liner ensuring position is maintained to the lamp. Fold back tags on decal to wrap around the lamp. Ensure good adhesion by rubbing with soft clean soft cloth. (ref. diagram3a).

**Diagram: 3b- REINSTALL THE STOP LAMP SURROUND**

3b. Refit the lamp surround. (ref. diagram3b).

STEPS 4-5 FOR MY2015+ RANGER ONLY

4. Remove the plastic cover by unclipping and pulling directly towards the rear of the vehicle.

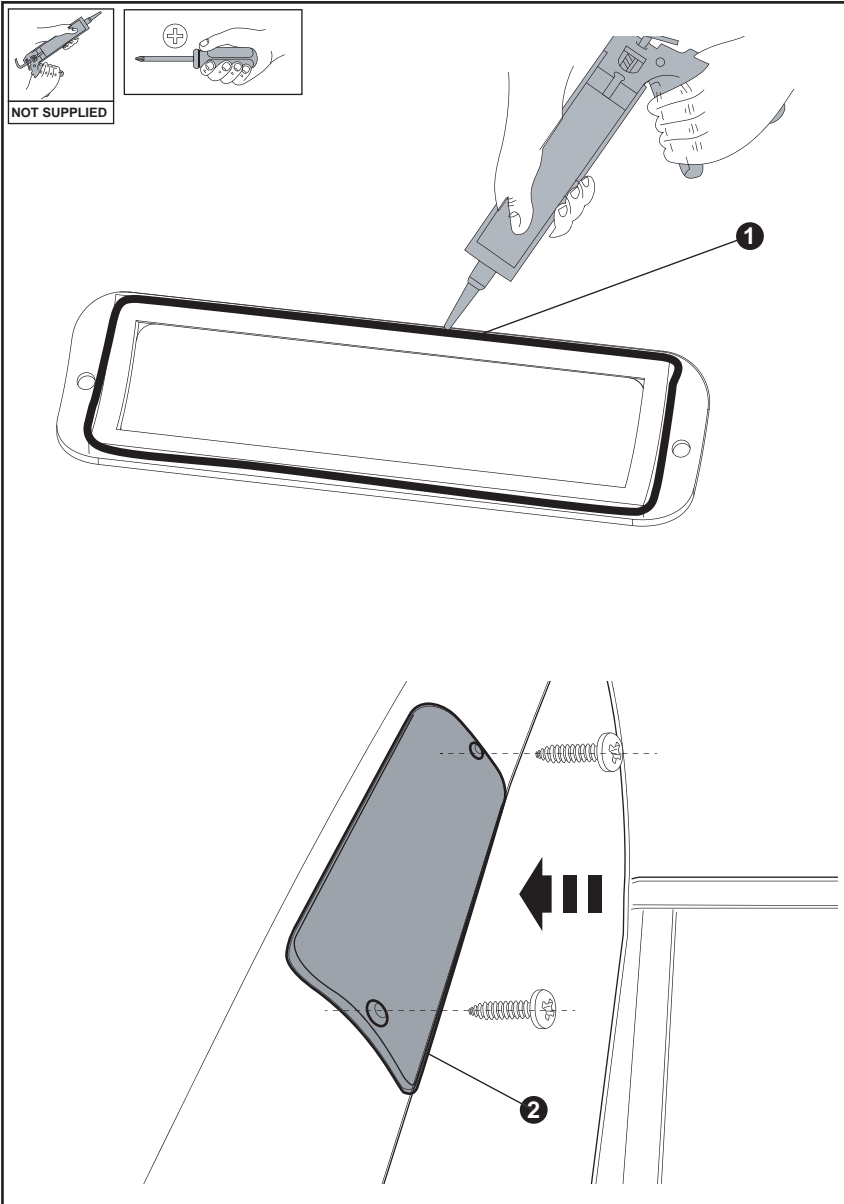
Clean and dry the surface.

Unscrew two (2) screws in the Stop Lamp.

Disconnect the electrical connector as shown.

Secure the loose connector to the vehicle using tape. (ref. diagram4).

Diagram: 4 - REMOVE HIGH MOUNT STOP LAMP SURROUND

STEPS 4-5 FOR MY2015 + RANGER ONLY**Diagram: 5 - INSTALL THE BLANKING PLATE**

5. Apply silicone around the outside perimeter to ensure the blanking plate is water sealed.

Screw the blanking plate by reusing the removed vehicle stop lamp screws. (ref, diagram5).

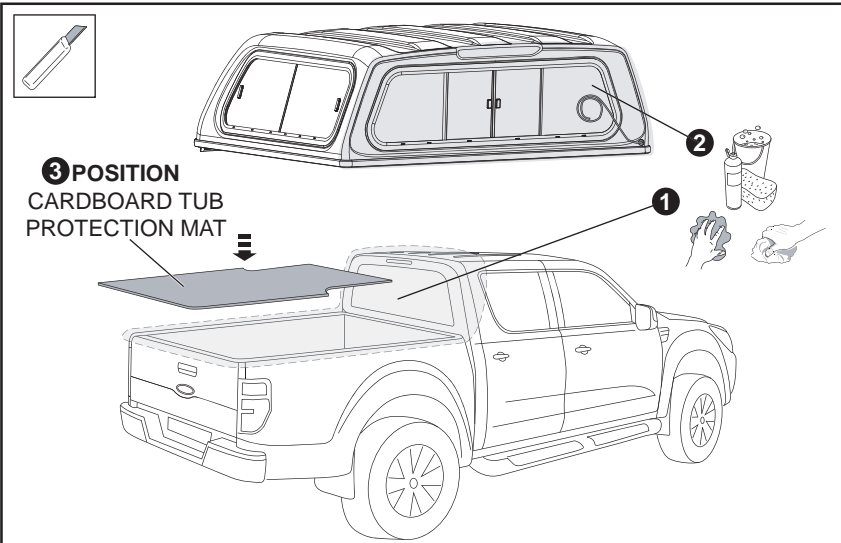


Diagram: 6 - CLEAN & DRY INSTALLATION AREAS

6. Thoroughly clean and dry installation areas (tub, rear of cabin and glass) as shown.
Clean front of canopy including the front window
Using cardboard cut from the canopy carton, cut and place a piece inside the tub on the floor as a protection mat while installing the canopy. (ref. diagram6).

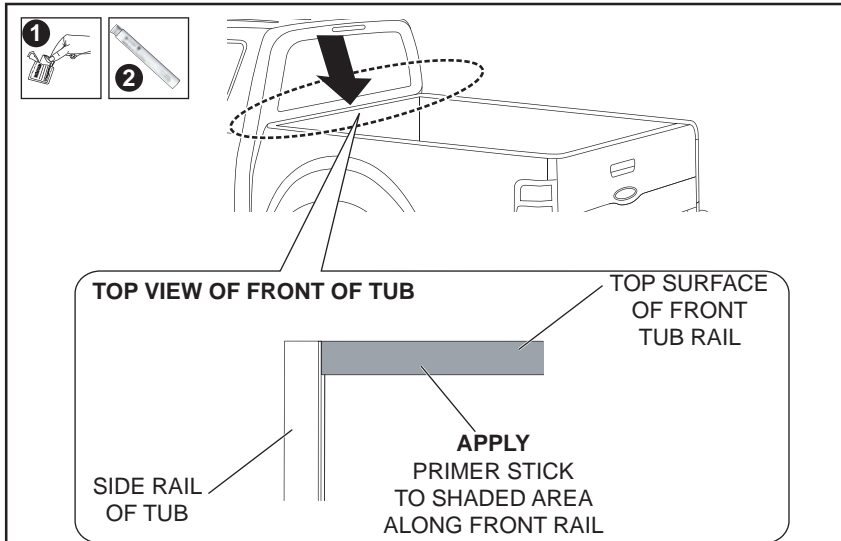


Diagram: 7 - APPLY PRIMER TO THE FRONT RAIL

7. Using alcohol wipe (MISC0052) clean the top surface of the front rail and wipe away residue with a dry clean cloth. If heavy cleaning is required use Iso-Propyl alcohol and wipe away residue with a dry clean cloth.
Apply (MISC1365) primer stick along the width of the front tub rail as shown all the way across side to side of the front tub rail and allow to dry. (ref. diagram7).

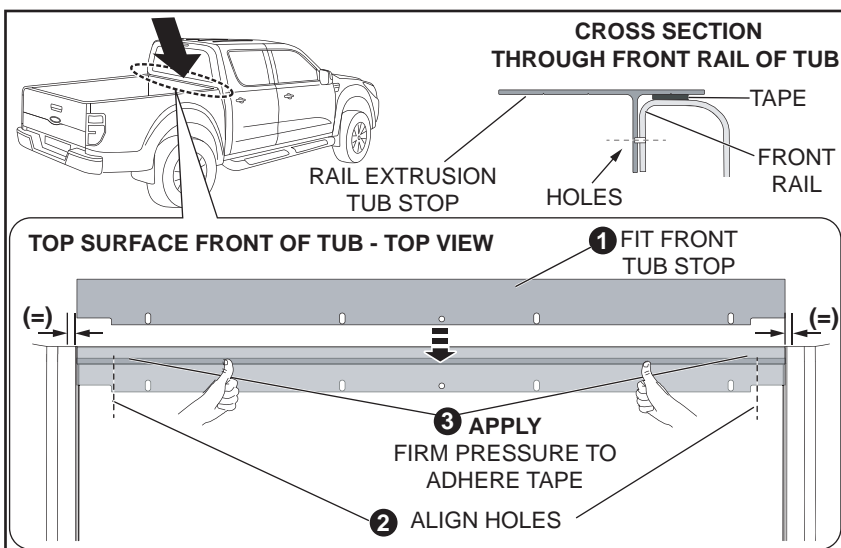


Diagram: 8 - FIT FRONT TUB STOP EXTRUSION

8. Remove the green liner film from the double sided tape applied to the front rail extrusion tub stop.
Fit rail extrusion tub stop (ALUM0043-6) to the front rail of the tub over the tape aligning the rail evenly to gaps to sides of the tub.
IMPORTANT: Ensure the short face sits over the front rail, and the long face with slots overhangs into the tub as shown. Ensure the slots at each end are aligned with the holes in the tub.
Apply firm pressure forward and down on the rail extrusion tub stop along the length to ensure maximum adhesion of the foam tape. (ref. diagram8).

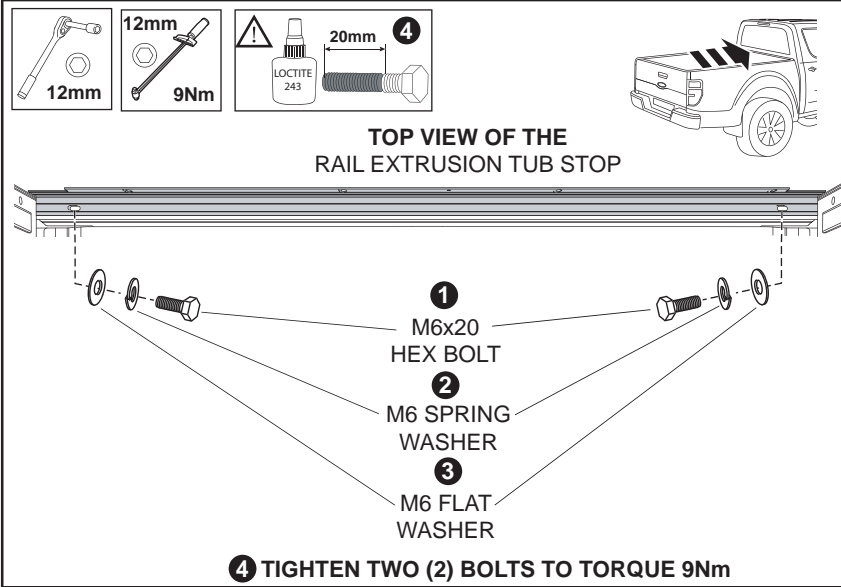


Diagram: 9 - SECURE TUB STOP WITH BOLTS

9. IMPORTANT! Apply Loctite 243 (not supplied), minimum 20mm along the thread on the bolts.

Secure the tub stop extrusion to the tub, using two (2) M6x20 hex bolts, M6 spring washers and M6 flat washers through the two (2) front slots as shown.

Tighten the bolts to **Torque 9Nm**. (ref. diagram9).

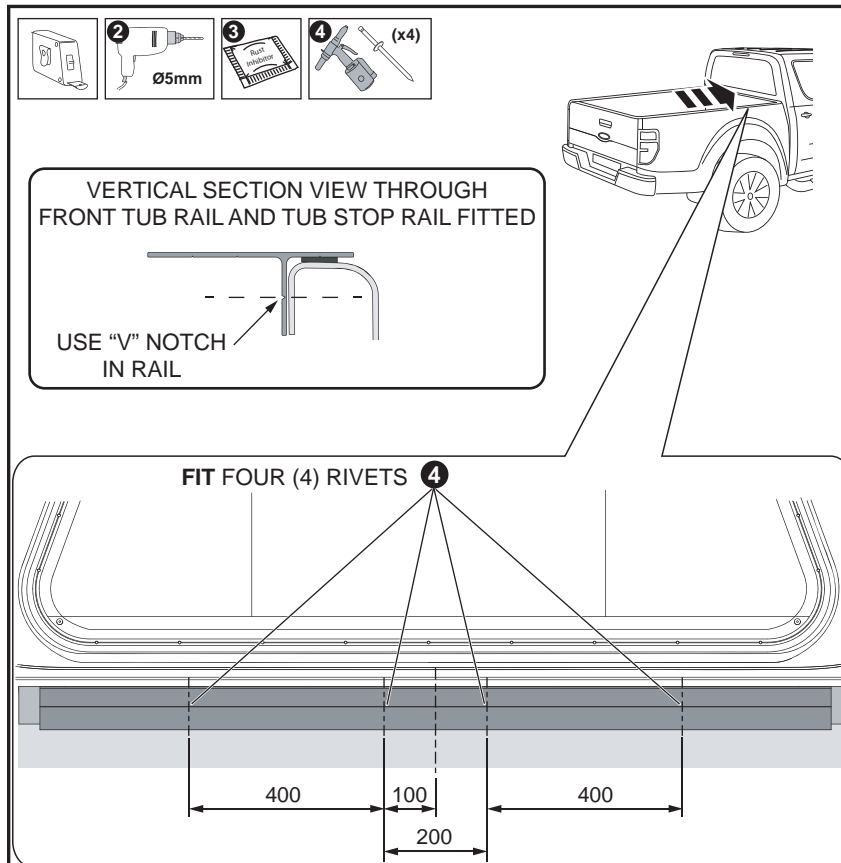


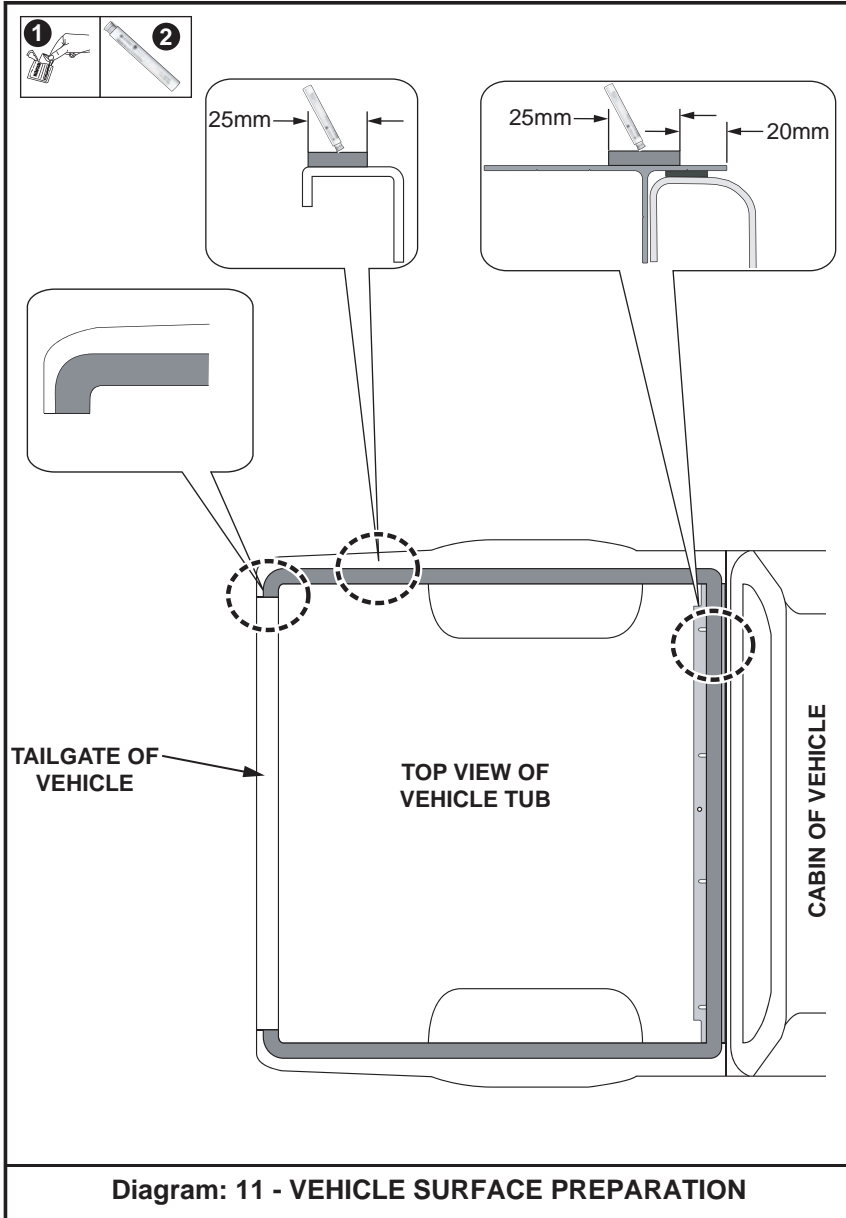
Diagram: 10- SECURE FRONT TUB RAIL WITH RIVETS

10. Measure out ,mark and drill four (4) Ø5mm holes into the front rail tub stop and tub rail using dimension's as shown.

Rivets must secure to flat form on tub.

Apply rust inhibitor (MISC2776) to all drilled holes in the tub sheet metal.

Secure with four (4) stainless steel rivets as shown. (ref. diagram10).



- 11.** Using alcohol wipes provided clean all top rail areas of the tub and wipe away residue with a dry clean cloth. If heavy cleaning is required use Iso-Propyl alcohol and wipe away residue with a dry clean cloth using priming stick (MISC1365) prime top rails of the tub where EPDM foam tape will be applied in (step 12). (ref. diagram11).

CONTINUE ON THE NEXT PAGE

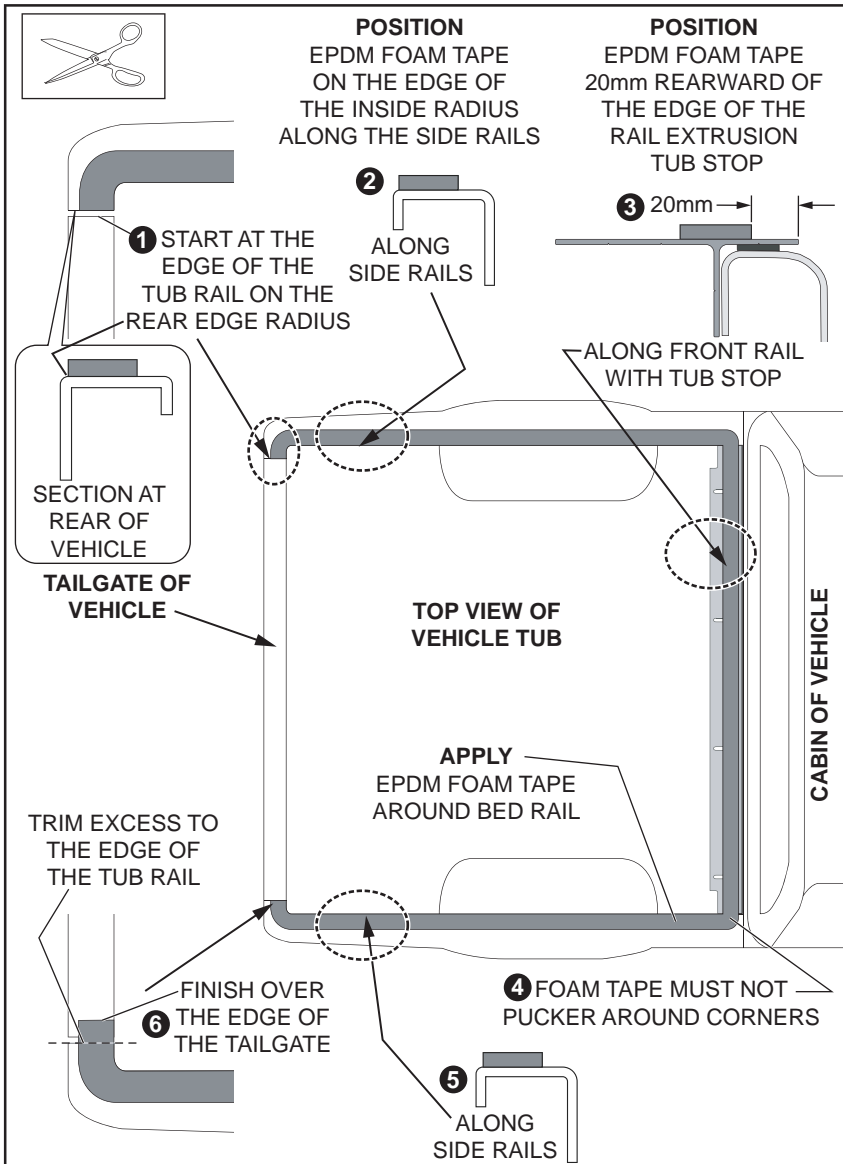


Diagram: 12 - INSTALL WATER SEALING TAPE

12. Apply EPDM foam tape (TAPE0625) from hardware kit to the vehicle tub bed rails and rail extrusion tub stop.
- IMPORTANT: DO NOT CUT FOAM TAPE, IT MUST BE APPLIED IN ONE CONTINUOUS LENGTH!**
- Starting from one side at the rear corner. As the tape bends around the corners ensure the tape sits flat and DOES NOT pucker. Trim off excess to the edge of the tub rail as shown.
- Ensure all foam tape areas are fully adhered to the tub and tub stop by **applying moderate pressure down on the tape all the way around the tub.** (ref. diagram12).

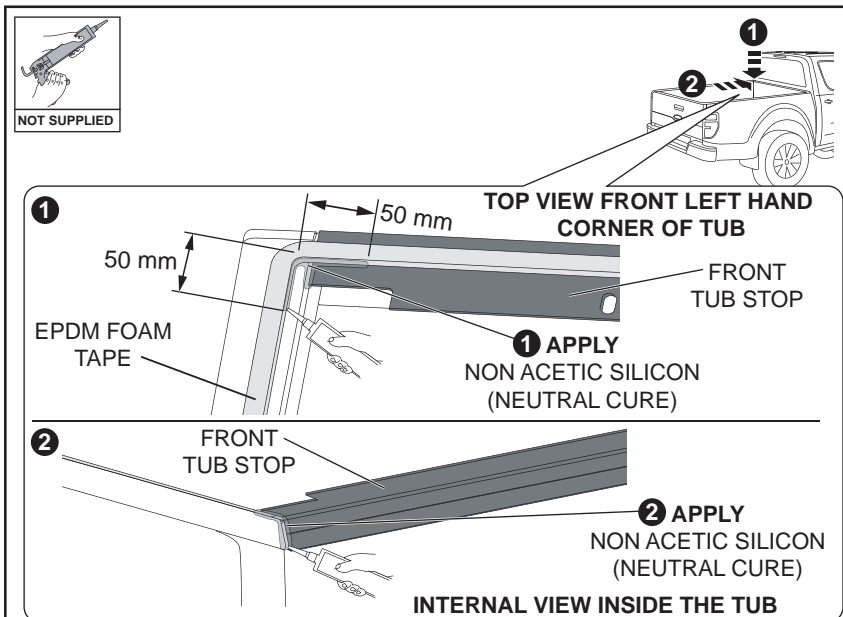


Diagram: 13 - APPLY SILICON

13. With a clean cloth wipe down all areas of the internal front tub corners to be siliconed as shown. Spray areas to be siliconed with water, Do Not dry, to allow the silicone to flow better.
- Apply non-acetic silicon (neutral cure) (not supplied) to the top of the tub and tub stop around the foam tape and inside the tub at the join between the front and side panels, ensure all gaps on the tub is silicon sealed properly. Re-spray silicon with water and push silicon into gaps and clean up excess silicon. Repeat process for the other side of the vehicle.
- IMPORTANT: This step must be done properly to ensure the vehicle tub is water sealed.** (ref. diagram13).

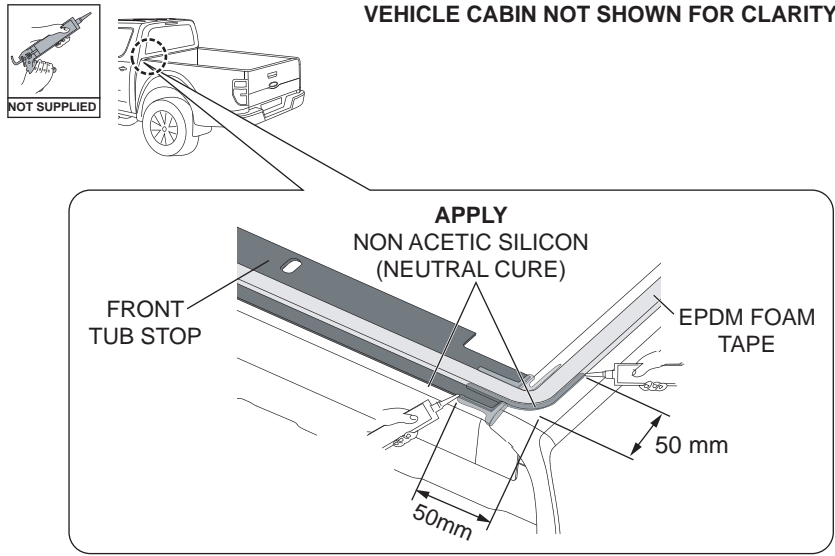


Diagram: 14 - APPLY SILICON

14. With a clean cloth wipe down all areas to be siliconed as shown. Spray areas to be siliconed with water, Do Not dry. Apply non-acetic silicon (neutral cure) (not supplied) to the top of the tub to fill the gap to the ends of the tub stop rail. Run a 10mm bead of silicon around the corners for a length of 50mm each way as shown. Repeat process for the other side of the vehicle.
- IMPORTANT: This step must be done properly to ensure the vehicle tub is water sealed.** (ref. diagram14).

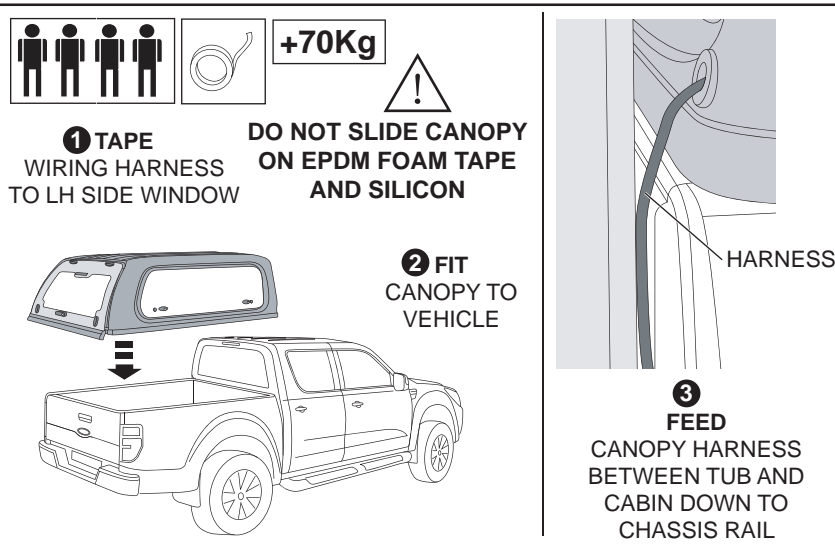


Diagram: 15 - FIT CANOPY TO TUB

15. Approximate weight of canopy 70Kg. Four people (minimum) are required for this step.
- First tape the wiring harness to the left hand side window with masking tape. Position the canopy onto the vehicle tub carefully.
- IMPORTANT: Ensure canopy is placed fully forward on the tub in one action. DO NOT slide the canopy on the EPDM foam tape and silicon, as this can damage the foam tape and spread the silicon (break the water seal).**
- Remove masking tape and feed canopy harness down between tub and cabin (right hand side of vehicle) so it is accessible under the vehicle on the outside of the chassis rail. (ref. diagram15).

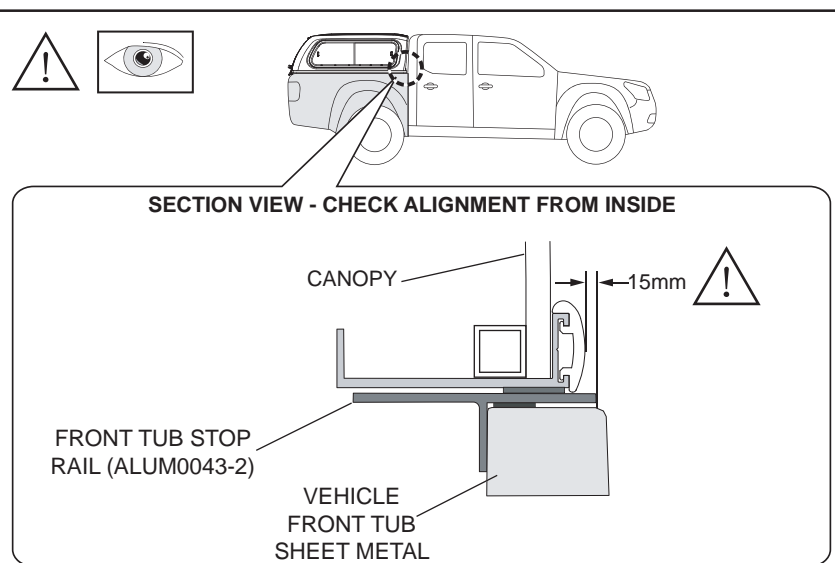


Diagram: 16 - ALIGN CANOPY TO TUB

16. Position canopy on the tub. The front of the canopy should be set 15mm rearwards from the front edge of the front tub stop (ALUM0043-2).
- Positioning is critical. Too far forward the rear door may not close properly. Too far to the seal at the bottom of the rear door may not seal.** (ref. diagram16).

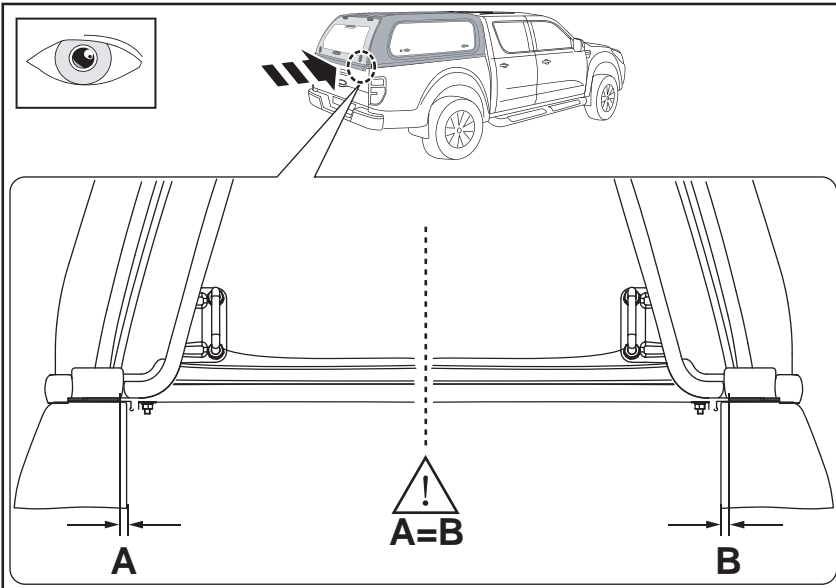


Diagram: 17 - ALIGN CANOPY TO TUB

17. Open rear tailgate to check sideways alignment. Using a steel ruler position the canopy so both canopy base side rails are even to the width of the vehicle tub. (ref. diagram17).

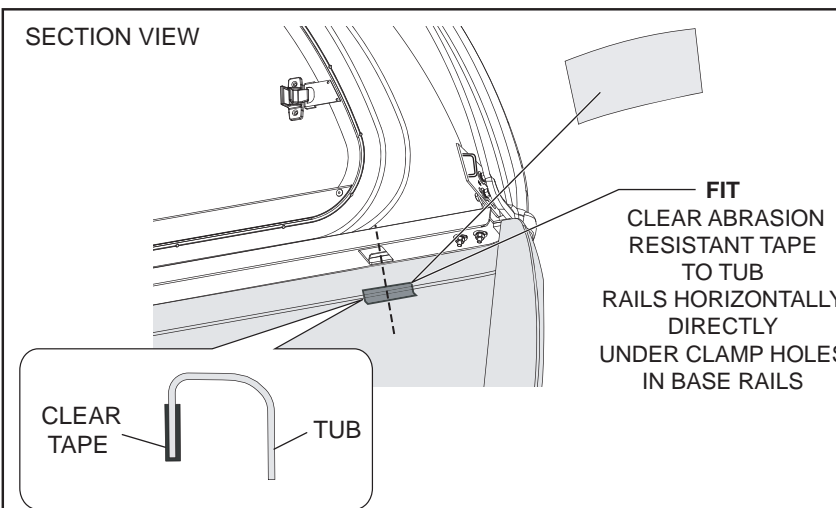


Diagram: 18 - FIT CLEAR ABRASION TAPE TO TUB

18. Fit six (6) abrasion resistant clear tape 50x30mm pieces (TAPE0011), to the vehicle tub rails directly under the square holes in the canopy base rails for the clamps as shown. (ref. diagram18).

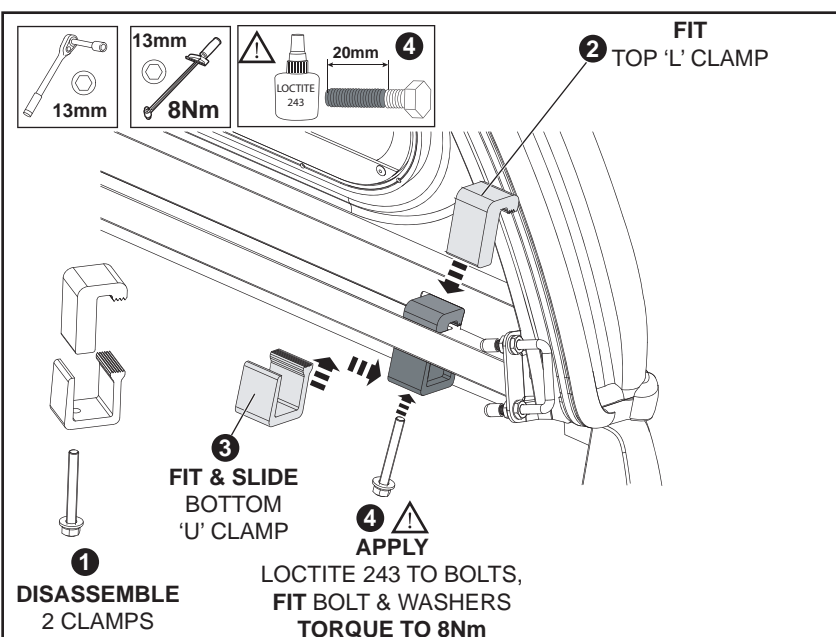


Diagram: 19 - FIT REAR CLAMPS

19. Fit two clamps (CNPY0007) to the rear holes in the canopy base rails both sides by fitting the top L clamp down through the hole in the rail and sliding the lower U clamp along the side rail over the clear abrasion tape. (ref. diagram 19)



Apply Loctite 243 to a minimum of 22mm along thread of the bolts. Torque to 8Nm.

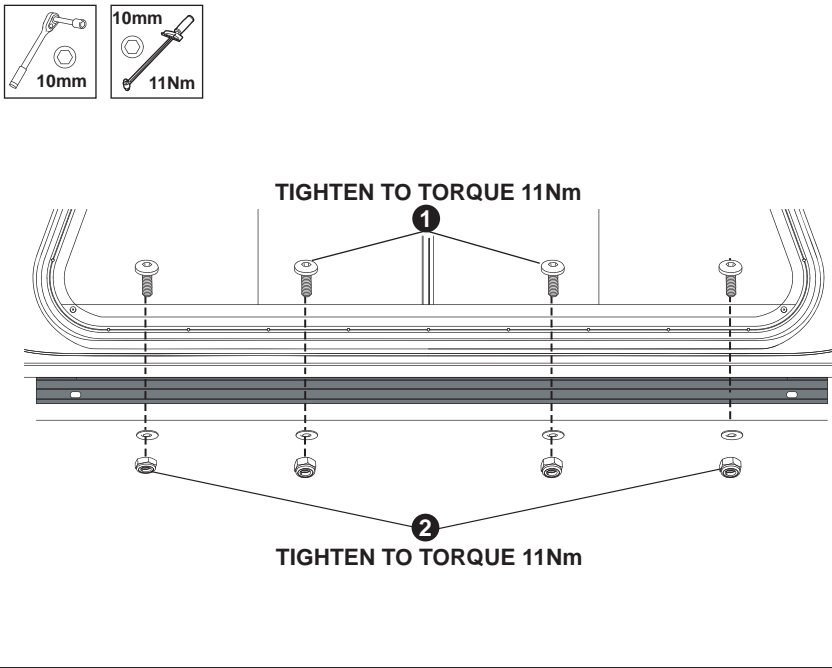


Diagram: 20 - SECURE FRONT TUB STOP RAIL

20. Secure previously installed front rail tub stop extrusion (ALUM0043-6) to the canopy front base rail spacer using four (4) M6 alan dome head bolts (SCRW0845), 2.5mm thick M6 flat washers and M6 nyloc nuts as shown.

IMPORTANT! Tighten center bolts first, and next tighten outer bolts to Torque 11Nm. (ref. diagram20).

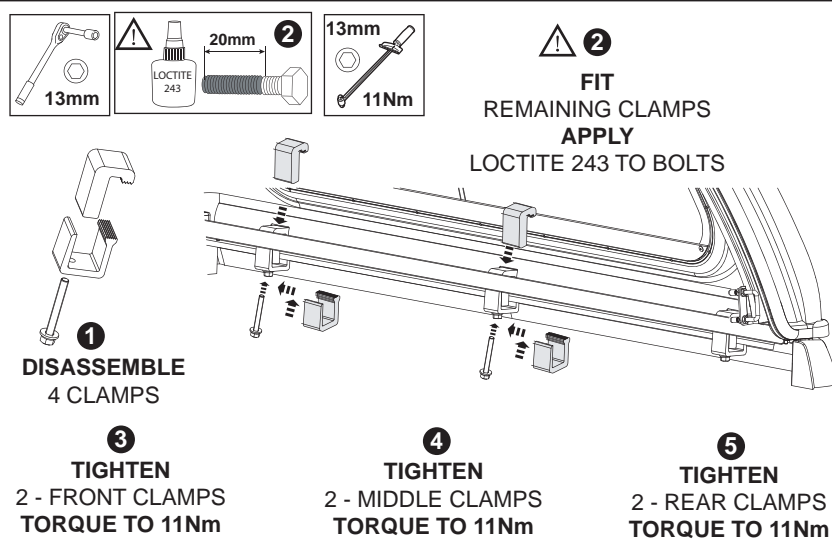


Diagram: 21 - FIT REMAINING CLAMPS AND TIGHTEN ALL

21. Fit the four remaining clamps. (ref. diagram 21).



NOTE: Re-tighten the front clamps first, middle clamps second and the rear clamp towards the door, third to torque 11Nm.



Apply Loctite 243 to a minimum of 22mm along thread of the bolts. Torque to 8Nm.

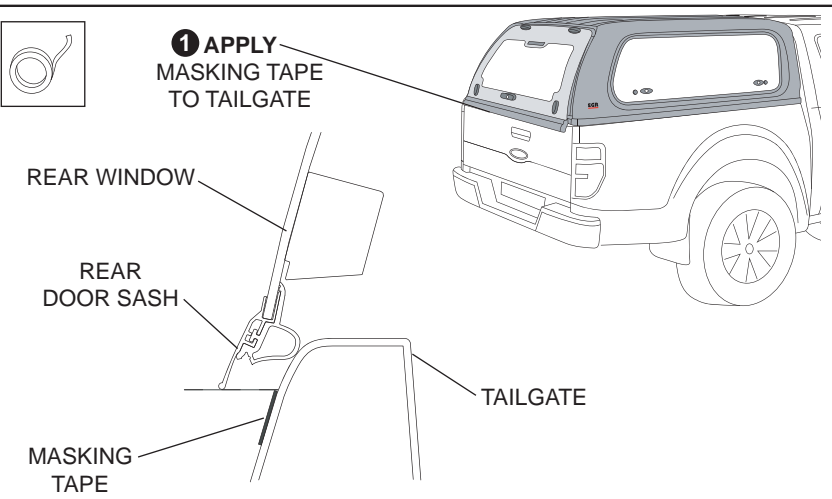
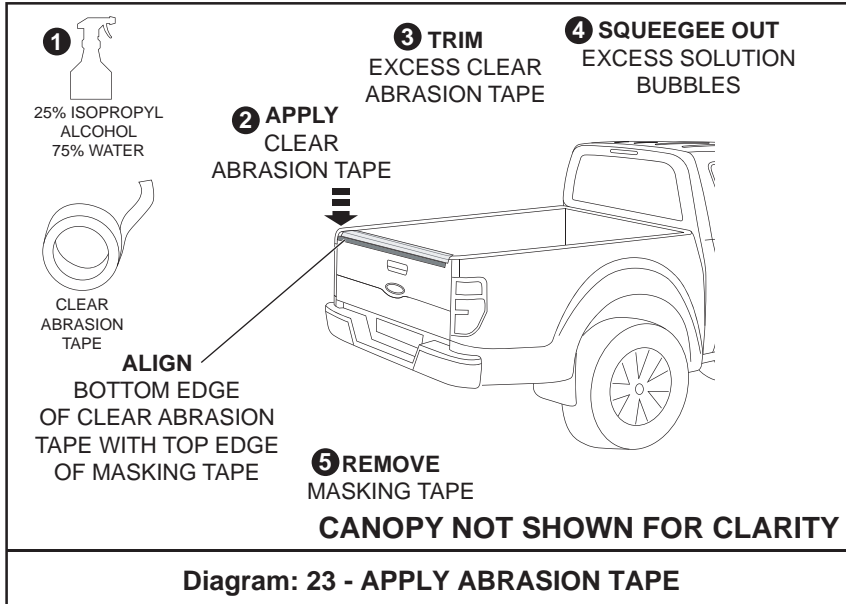
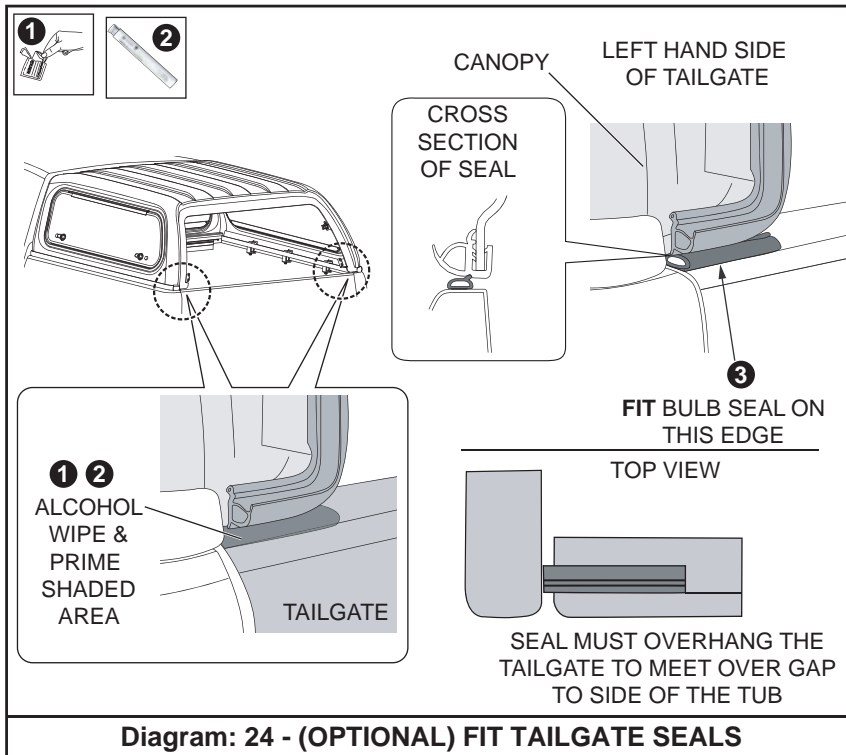


Diagram: 22- APPLY MASKING TAPE

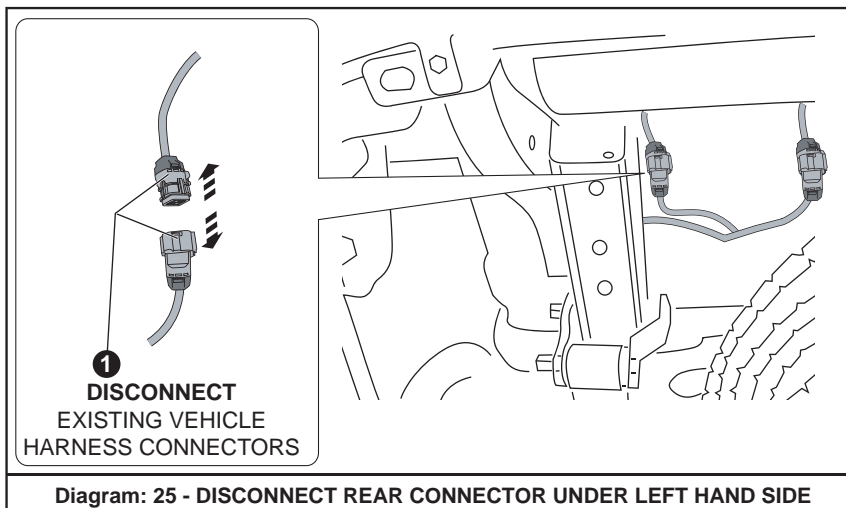
22. With the canopy rear door closed, apply a length of masking tape to the rear tailgate, level with the bottom edge of the canopy rear door sash, when viewed from the rear horizontal position as shown. This will assist in positioning the clear abrasion tape applied to the top of the tailgate in the next step. (ref. diagram22).



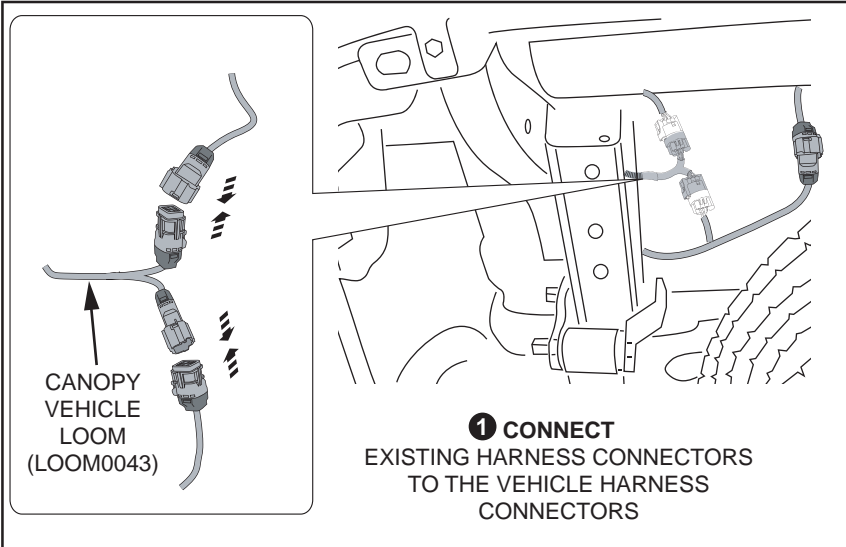
23. Using a solution of 25% isopropyl alcohol and 75% water in a spray bottle (not supplied) Thoroughly spray along the top of the tailgate. Remove liner from clear abrasion tape. Working from one end with a 5mm overhang, place liner on the tailgate. Trim excess tape leaving a 5mm overhang at both ends of the tailgate. When in position use a squeegee to push out any excess water solution and bubbles. Using a sharp knife or scissors, trim tape to end of tailgate. You may need to squeegee a few times. **When finished the tape is virtually invisible.** To ensure a good finish please take care and do not rush this step. Remove masking tape. (ref. diagram23).



24. Using alcohol wipe provided clean directly below the rear door clamp seal and wipe away residue with a dry clean cloth. Using priming stick (MISC1365) prime area directly below the rear door clamp seal. Apply only a light amount both sides of tailgate in this area, and allow to dry. Apply bulb seal 70mm (MISC2600-1) to tailgate as shown. Position bulb seal so it's finger seals against the underside of the clamp frame seal as shown in the section view and position it's cut end in line with the outer edge of the tailgate as shown. Repeat on right hand side of tailgate. (ref. diagram24).

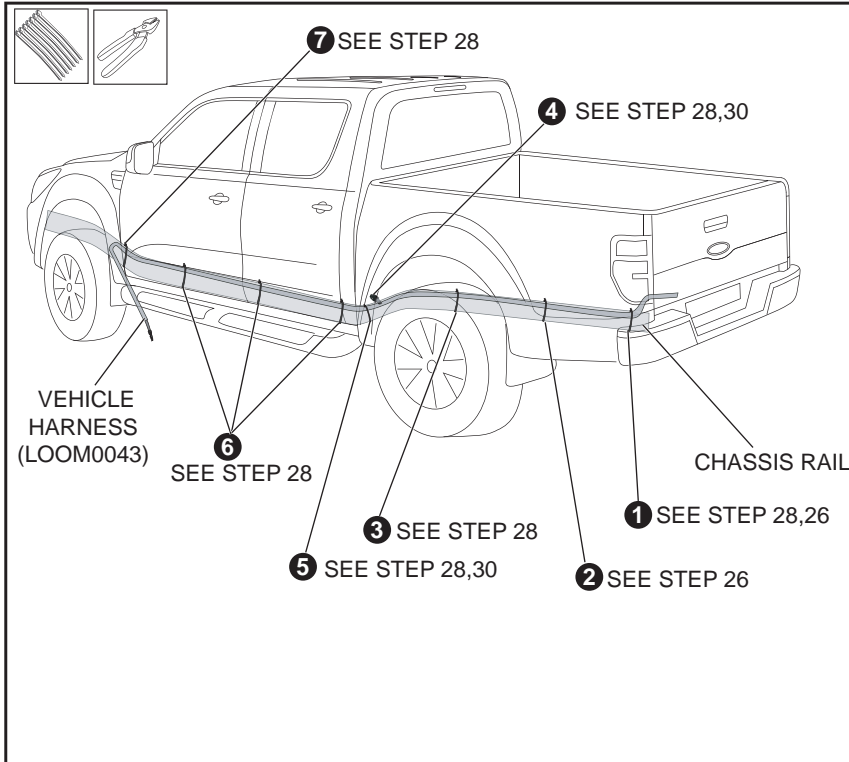


25. Disconnect existing vehicle harness connectors under the rear left hand of the car near the chassis rail and spare tyre. (ref. diagram25).



26. Connect the wiring loom (LOOM0043) into the vehicle harness as shown. (ref. diagram26).

Diagram: 26 - CONNECT LOOM INTO EXISTING VEHICLE CONNECTOR



27. Run the vehicle harness (LOOM043) along the chassis rail with existing wiring, up to the front left hand wheel arch as shown. Fit cable ties in sequence listed. Trim excess cable tie length with side cutters. Ensure harness is run in a direct route from the rear of the vehicle to the front. (ref. diagram27).

Diagram: 27 - RUN HARNESS ALONG CHASSIS RAIL

CONTINUE ON THE NEXT PAGE

28. At the rear left hand side of the vehicle locate the existing harness connectors and disconnect them. Connect the tail lamp connectors to the vehicle harness (LOOM0043) connectors as shown.

Run the vehicle harness along the left hand chassis rail, then follow the chassis rail to left hand fire wall. Ensure the harness is positioned away from the exhaust system. Ensure the canopy connector is positioned on the chassis rail between the tub and the cabin as shown. Secure the vehicle harness with cable ties. Position cable ties away from fuel lines, brake cables, moving parts and flexible mounts to body. Trim excess cable tie length with side cutters. Ensure harness is run in a direct route from the rear of the vehicle to the front. (ref. diagram28).

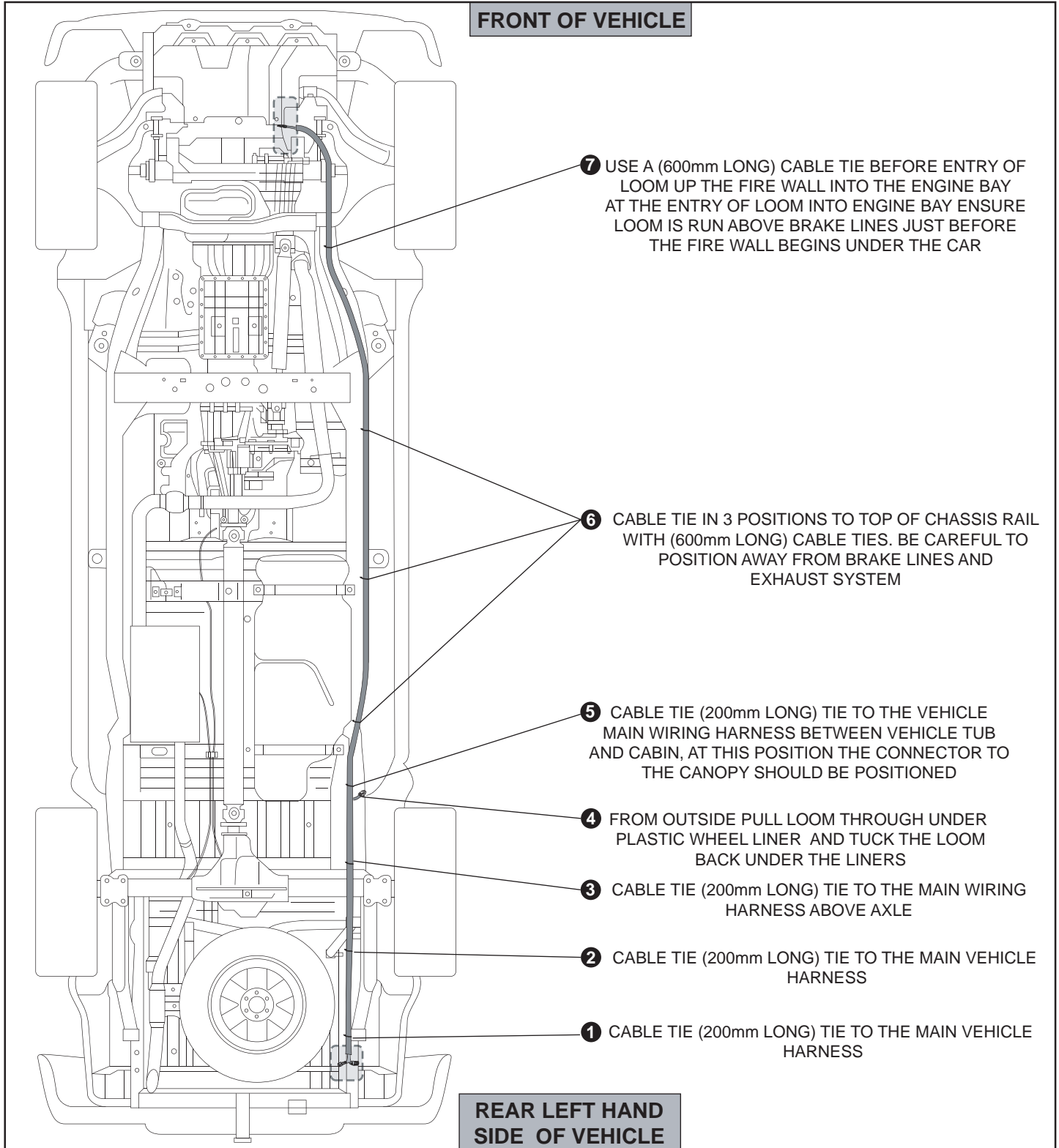


Diagram: 28 - CONNECT & RUN VEHICLE HARNESS UNDER THE VEHICLE

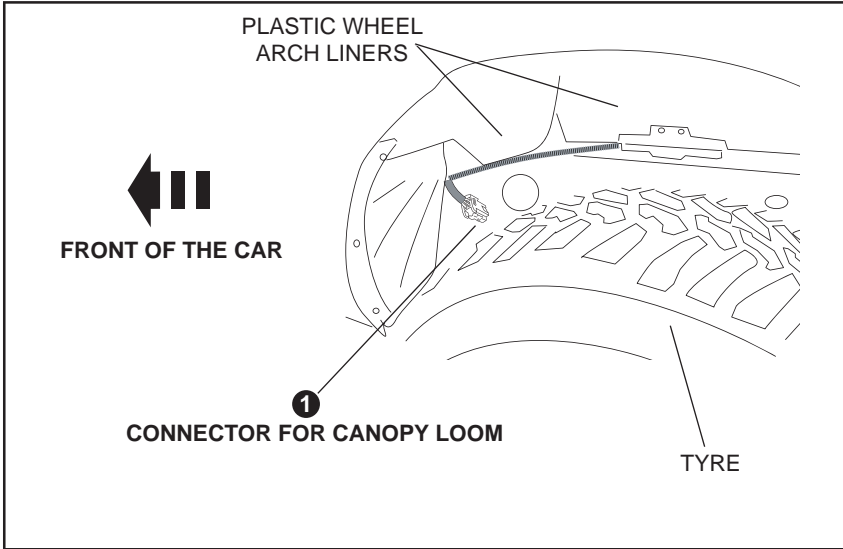


Diagram: 29 - CANOPY CONNECTOR LOCATION

29. Feed the wiring loom along the chassis rail above the rear wheel and tuck the loom back in under the plastic wheel arch liners. Leave the canopy loom connector behind the plastic wheel arch liner at the front. (ref. diagram29).

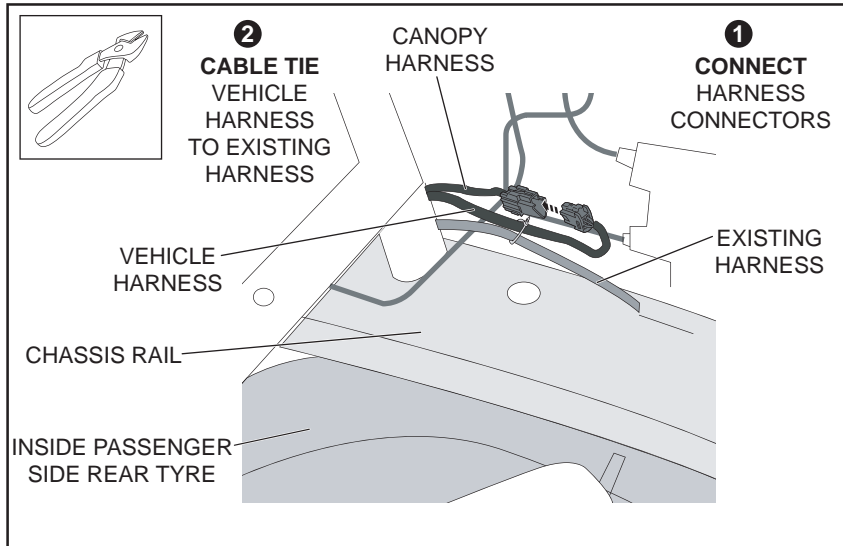


Diagram: 30 - SECURE CANOPY HARNESS

30. Feed the canopy and vehicle wiring harnesses to the gap between the tub and the cabin under the left hand plastic wheel arch liner. Join the connectors from the canopy and vehicle wiring harnesses together. Using a cable tie secure the vehicle wiring harness only to the existing main wiring harness as shown. (ref. diagram30).

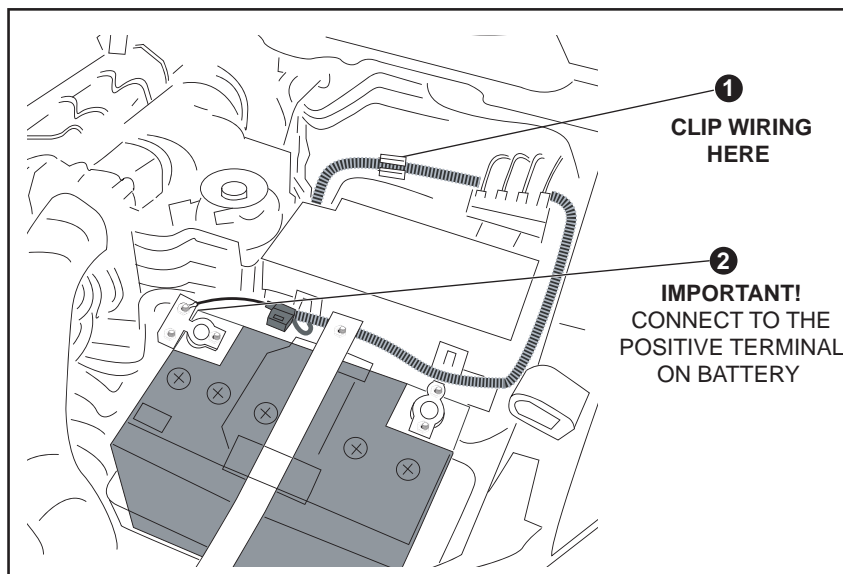
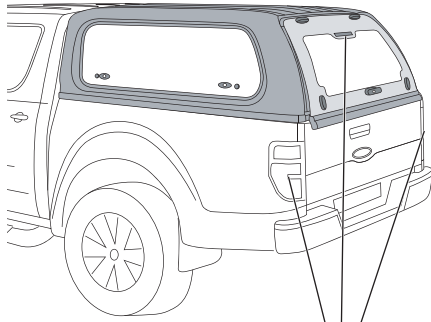
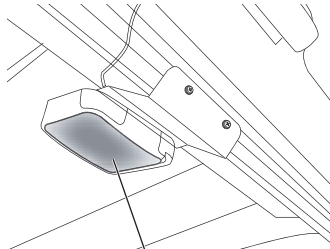


Diagram: 31 - CONNECT THE LOOM UNDER THE HOOD

31. Feed the wiring loom along the chassis rail up the fire wall into the vehicle engine bay. Clip the corrugated harness into the white plastic clip on the fire wall and feed along the side fender and between the fuse box and the battery. Connect the loom into the positive terminal of the battery, as shown. (ref. diagram31).



**CHECK
BRAKE LIGHTS
WORK**



**CHECK
CANOPY LAMP
WORKS**

Diagram: 32 - CHECK BRAKE LIGHTS AND CANOPY LIGHT

- 32.** Two people are required to check the canopy brake light is operational after depressing the brake pedal. Then open the rear window and check that the internal canopy lamp is operating correctly when switched to the 'ON' position only. (ref. diagram32)
NOTE: It will not operate in "DOOR" position.
A separate accessory can be purchased to operate the light automatically when the rear door is opened.



**PLACE FITTING INSTRUCTIONS
IN THE CUSTOMERS LOG BOOK**

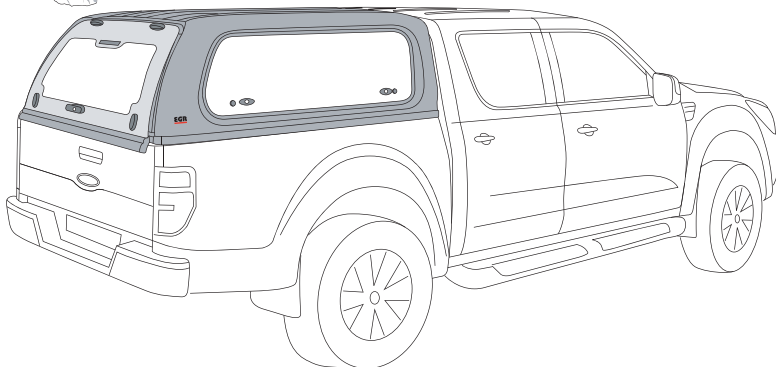


Diagram: 33 - FINAL CLEANING

- 33.** Clean canopy including all windows and vehicle thoroughly .
Place fitting instructions in the Customers log book, and ensure the owners manual supplement is discussed with the customer and a copy is given to the customer. (ref. diagram33).

CONTINUE ON THE NEXT PAGE

LATCH STRIKER ADJUSTMENT

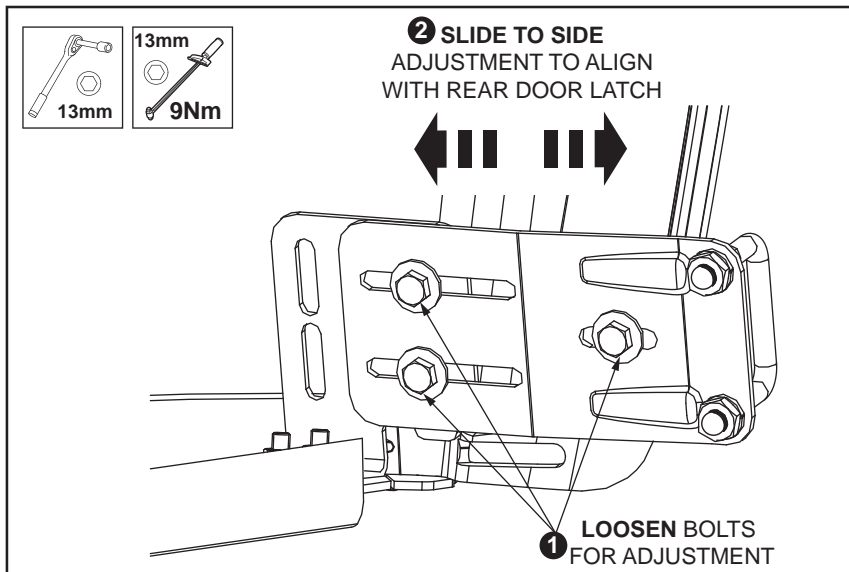


Diagram: 34 - ADJUST STRIKER BRACKET

- 34.** Ensure rear door latch engages onto the striker hoop. Striker hoop cross-car direction can be adjusted by loosening 3 x M6 bolts and sliding striker bracket. Re-tighten bolts to 9Nm. (ref. diagram 34).



IMPORTANT: The latch system is a two stage system. Ensure that the rear door latches engage to the second stage when the rear door is closed.

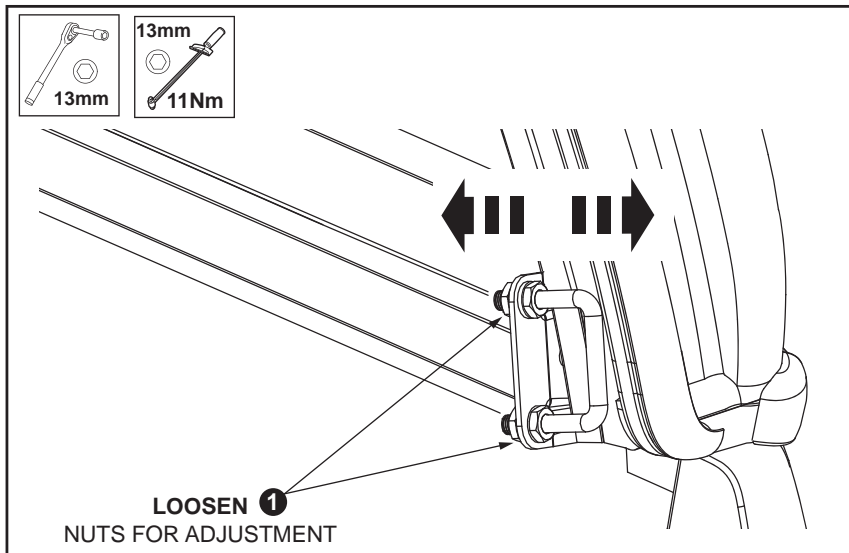


Diagram: 35 - ADJUST STRIKER

- 35.** Door position forward / rearward can be adjusted by loosening 4 x M8 nuts on the threaded striker hoop. Readjust position as required. Re-tighten to 11Nm. (ref. diagram 35).

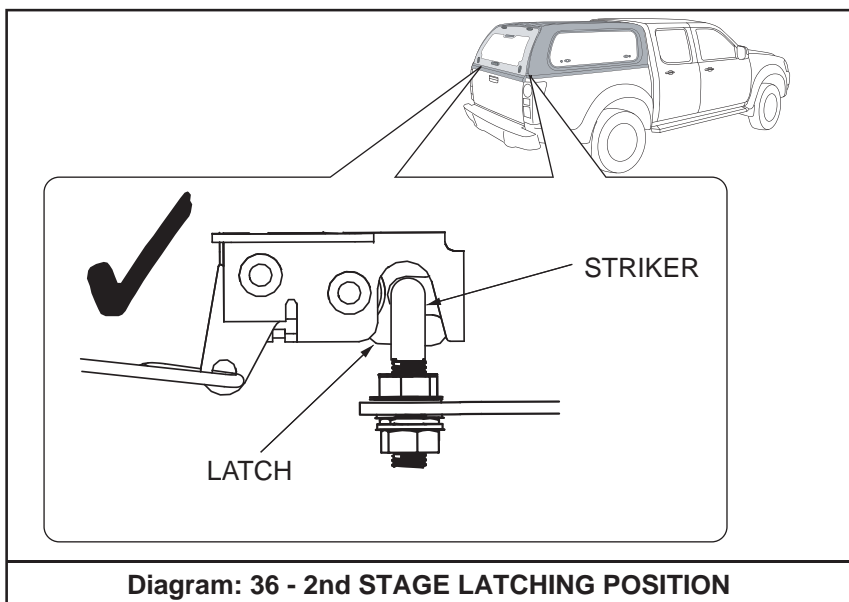
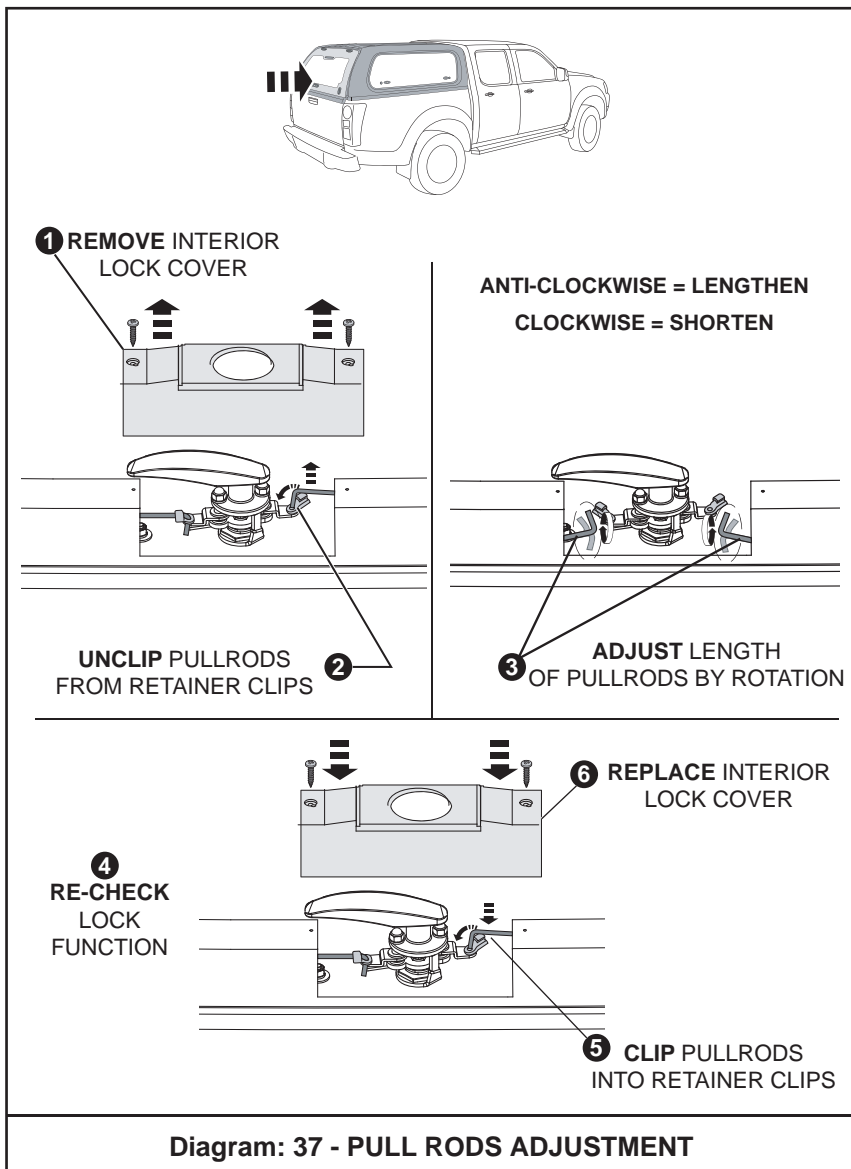


Diagram: 36 - 2nd STAGE LATCHING POSITION

- 36.** Ensure latch reaches 2nd stage position, as shown. (ref. diagram 36).

LATCH STRIKER ADJUSTMENT



37. Check rear door handle operation: This can be checked with the door open, manually depress latches and activate handle. Handle should activate latches at 2/3 of handle travel simultaneously for LHS and RHS. If required, adjust pull rods as shown: Spinning clockwise - shorten. Spinning anticlockwise - lengthen. (ref. diagram 37).

NOTE: If required latch position on the rear door can be adjusted side to side by removing latch cover and loosening 2 x M8 nuts holding latch in position. Re-tighting to 8Nm.



OWNERS MANUAL SUPPLEMENT
IMPORTANT: PLACE THIS PAGE IN THE CUSTOMER'S VEHICLE SERVICE BOOK.



MAZDA BT-50 MY10 Onwards

CANOPY

KEY IDENTIFICATION CODE



| | | | |
|--|--|--|--|
| | | | |
|--|--|--|--|

Please write the key identification code in the boxes above, and retain this copy with the vehicle service history. Replacement keys can be purchased from your local dealer.



OWNERS MANUAL SUPPLEMENT
IMPORTANT: PLACE THIS PAGE IN THE CUSTOMER'S
VEHICLE SERVICE BOOK.



WARNING! - SAFETY!

- Do Not use the canopy as a passenger compartment.
- Do Not operate/drive vehicle with fold up windows or rear door open.
They must be closed when vehicle is in motion.
- Do Not store or transport volatile materials, such as solvents, chemicals or liquids as fumes may accumulate inside canopy. Do Not allow solvents, chemicals or oils to come in contact with the canopy. If this should occur clean the canopy immediately with a mild detergent and water solution.
- Do not stand/sit or rest heavy objects on Canopy.
- Do not fill volatile liquid containers while inside canopy such as fuel cans.
- **VEHICLES FITTED WITH A BED LINER:** Static electricity can cause fire when fuel is pumped into ungrounded fuel containers or equipment (eg: motorcycles, chainsaws etc..). Do Not fill fuel containers or equipment within the vehicle tray as static electricity can cause fuel to ignite, resulting in damage, injury or death. To avoid electricity build-up, place fuel container or equipment on the ground before filling.

Maintenance

Only use mild detergents or wax polish. Do Not use abrasive compounds on painted or plastic finished canopy surfaces.

The gas struts are self lubricating and should only be cleaned with a damp cloth, when regularly cleaning the vehicle. Premature seal failure will result if solvents or lubricants are used to clean struts.

Gas struts must be orientated as installed, **cylinder (wide end) to canopy and rod (narrow end) to glass.**

Lightly coat the door and window rubber assemblies with a silicon spray after cleaning periodically.

Only locks and lock recesses are to be lubricated with Graphite Powder.

Vaseline may be used on the rotary catches on the rear door.

DO NOT use any other lubricants or oils. Using alternative products will VOID Warranty.

Check canopy attachment clamps every 1000 Km.

Clamp bolt recommended torque setting is 11Nm.

If removed, bolts must have **LOCTITE** 243 re-applied and be re-tightened on refitting to specified values.

CHECK regularly that all screws and fasteners holding windows and doors are tight.

The rear tailgate protection tape must be replaced periodically to minimize paint scuffing caused by the canopy rear door opening and closing.

For sliding windows use a silicon based Non-Aerosol lubricant or a dry film lubricant or LY70 lubricant or 3M window channel dresser lubricant sparingly.

⚠ DO NOT use CRC, WD40 or petroleum based lubricants on sliding windows. ⚠

Warranty Terms

EGR warrants that the ABS Canopy will be free from defects in material and workmanship for a period of three (3) years from the retail date of purchase. The gas struts are warranted for one (1) year from the retail date of purchase.

This warranty only applies to the original purchaser and is nontransferable. Warranty must be claimed with original sales receipt for proof of purchase.

Exclusions

This warranty does not cover failure due to neglect, improper installation, including any modifications to installation hardware, alterations, addition of non genuine equipment, abuse, accident, normal wear and tear, lack of maintenance, misuse, and exposure to chemicals that are not safe for plastics or hardware components.

Incidental or consequential damage or loss of contents due to use, neglect, lack of maintenance, misuse of EGR Canopy is sole responsibility of the vehicle owner and operator. Paint wear to the vehicle bed can happen with any Canopy and is the sole responsibility of the vehicle owner.

Paint damage to your vehicle is not covered under this warranty.

Disclaimer

In the event that your EGR Canopy is found to be defective under the terms of this warranty, it is at the discretion of EGR to repair or replace the defective part. Transportation costs and labour are not associated with this warranty claim.

INSTALLATION CHECKLIST**Dealer Name:**

Dealer Code:

Model:

Part No of Canopy:

Order Date:

Order No:

Required By:

Vin No:

Canopy Colour**Vehicle Damage Check:****Detail:** _____**Canopy Checklist - Details of rectifications required:****KEY No. :**

- | | |
|---|--------------------------|
| 1. Check paint on canopy | <input type="checkbox"/> |
| 2. Cleanliness of canopy inside and outside | <input type="checkbox"/> |
| 3. Canopy sealing to tray, front tub stop extrusion and foam tape applied correctly | <input type="checkbox"/> |
| 4. Seal around Front of tub, vertical & floor with Silicone after foam tape applied | <input type="checkbox"/> |
| 5. Tailgate clear abrasion wear tape fitted | <input type="checkbox"/> |
| 6. Position canopy on tub squarely side to side, rear door closes on second stage latch (not just first latch) both sides and lower door sash seal, seals to tailgate, adjust strikers and /or door latch pull rods via access to centre door handle by removing internal door handle cover | <input type="checkbox"/> |
| 7. Clamps are square and tight (Torque 11Nm) | <input type="checkbox"/> |
| 8. IMPORTANT! Loctite 243 applied to all Clamp Bolt Threads | <input type="checkbox"/> |
| 9. Rear Door, Side Door's and Front window operation, side windows lock with keys. Check rear door handle and locks with keys. If not locking remove interior cover on rear door handle and adjust the pull rods by winding them in/out and test the door again, replace cover. | <input type="checkbox"/> |
| 10. Operation of Brake Light | <input type="checkbox"/> |
| 11. Operation of interior light | <input type="checkbox"/> |
| 12. Water Tested for leaks | <input type="checkbox"/> |
| 13. Clean up of work area | <input type="checkbox"/> |

14. Comment

Fitted By:**Vehicle received and Checked by Dealer Staff:****Record Canopy Serial Number:**

(located on inside LH rear pillar of canopy shell)

Checked By: