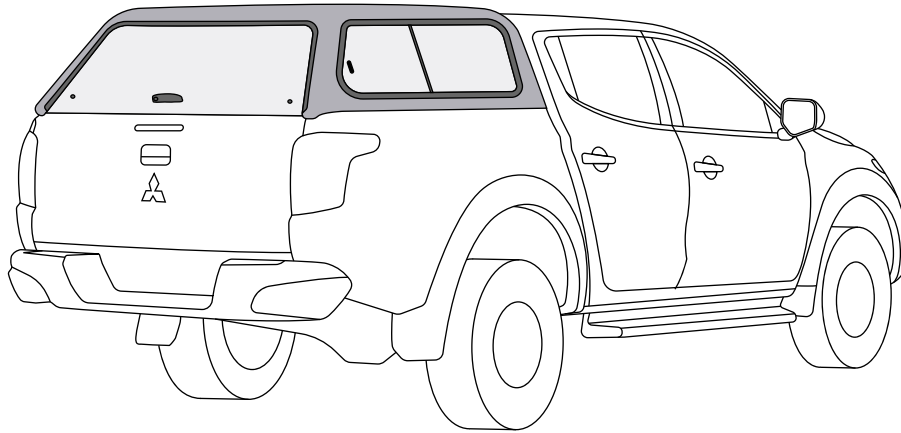


CANOPY INSTALLATION INSTRUCTIONS Mitsubishi Triton MQ & MR



INSTALLATION TIME: 2.0 Hours (Approximately)



- **Do not tighten any bolts, screws and nuts that are used in the window frames, locks and glass assemblies. This may cause water leaks along window frames and glass windows to shatter.**
- **Recommendation – If fitting this Canopy to a vehicle that has an integrated brake light in the tailgate, it is recommended to disconnect the light in the door. ADR legislation stipulates that only one centre rear brake light be operational.**
- **Read instructions carefully before installation.**
- **It is strongly recommended that installation is conducted by an authorized dealer.**
- **This product must be installed exactly as specified in these instructions. Failure to do so may result in improper fit and/or retention/failure of components.**
- **Recommend installation by two people (four people will be required to lift Canopy).**

CARE INSTRUCTIONS:



Clean Canopy with a mild detergent and water solution.



Do not use abrasive cleaners or solvents.

PERSONAL PROTECTIVE EQUIPMENT:



Mask



Rubber Gloves



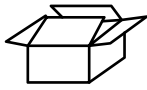
Goggles



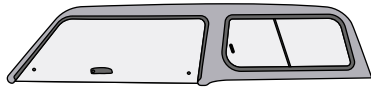
Hearing Protection

RECOMMENDED TOOL LIST - (Not Supplied in Kit)

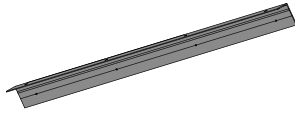
- | | |
|------------------------------------------------------------------------------------------------------------------------------------------------------------------------------------------------------------------------------------------------------------------------------------------------------------------------------------------------------------------------------------------------------------------------------------------------------|--------------------------------------------------------------------------------------------------------------------------------------------------------------------------------------------------------------------------------------------------------------------------------------------------------------------------------------------------------------------------|
| <ul style="list-style-type: none"> • Phillips Head Screwdriver • Thread Lock (eg. Loctite 243) • Sockets 10 & 13mm, Extension Bar and Driver • Spanners 10 & 13mm • Silicon Dispensing Gun • Clear Non Acetic Silicon (Neutral Cure) • Spray Bottle with Soapy Water • Torque Wrench 0-20Nm • Allen Keys (Ball Ended Type) • Oscillating Saw | <ul style="list-style-type: none"> • Non Permanent Marker • Cleaning Cloths / Rags • Steel Rule and Tape Measure • Scissors • Knife • Squeegee • Drill and Ø5.5mm Drill Bit • File or De-burring Tool • Masking Tape • Hammer & Centre punch • T40 Torx Key |
|------------------------------------------------------------------------------------------------------------------------------------------------------------------------------------------------------------------------------------------------------------------------------------------------------------------------------------------------------------------------------------------------------------------------------------------------------|--------------------------------------------------------------------------------------------------------------------------------------------------------------------------------------------------------------------------------------------------------------------------------------------------------------------------------------------------------------------------|



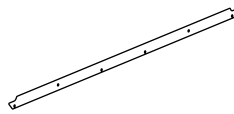
PARTS IN MAIN CARTON



Canopy
Qty - 1



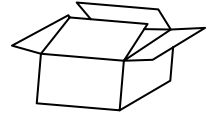
Header Bar
(ALUM0038-13)
Qty - 1



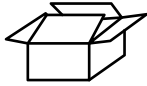
Tail gate Plate
(ALUM0075)
Qty - 1



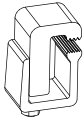
Lock Keys
(Attached to
Rear Window Strut)
Qty - 2



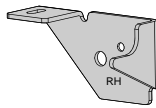
Fitting Kit
Qty - 1



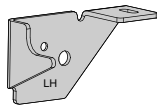
PARTS IN FITTING KIT

1


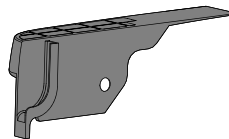
Rail Clamps
(CNPY0007)
Qty - 4

2


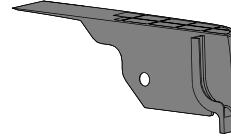
Rear Mount
Bracket LH
(CLIP3407PC)
Qty - 1

3


Rear Mount
Bracket RH
(CLIP3407PC)
Qty - 1

4


Rear Rubber
Seal LH
(INJM0031)
Qty - 1

5


Rear Rubber
Seal RH
(INJM0031)
Qty - 1

6


Rivet
(FAST0609)
Qty - 12

7


M8 Flat Washer
(WASH0171)
Qty - 2

8


M6 Nylock Nut
(NUTS0016)
Qty - 6

9

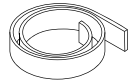

M6x25 Button
Head Bolt
(SCRW0505)
Qty - 2

10

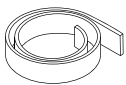

M6 Flat Washer
(WASH0169)
Qty - 12

11


M6x20 Button
Head Bolt
(SCRW0466)
Qty - 4

12


Foam Tape
6X14x1460mm
(TAPE0687)
Qty - 1

13


Foam Tape
9x20mm x 4.6m
(TAPE0652)
Qty - 1

14

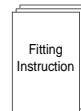

Primer Stick
(MISC1365)
Qty - 3

15


Rust Inhibitor
Satchel
(MISC2776)
Qty - 1

16


Alcohol Wipe
(MISC0052)
Qty - 4

17


Fitting
Instruction
(FIT-CP0234e)
Qty - 1

18

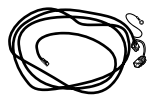

Vehicle Wiring
Patch Harness Kit
(LOOM0184)
Qty - 1

19

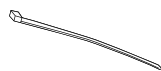

Spacer
(MISC4523)
Qty - 2



PARTS IN VEHICLE WIRING PATCH HARNESS KIT (LOOM0184)



Vehicle Wiring
Patch Harness
(LOOM0184)
Qty - 1



Cable Ties
(3) Long
(2) Short
Qty - 5



Adhesive Tie
Pad
Qty - 1

CABIN GUARD REMOVAL

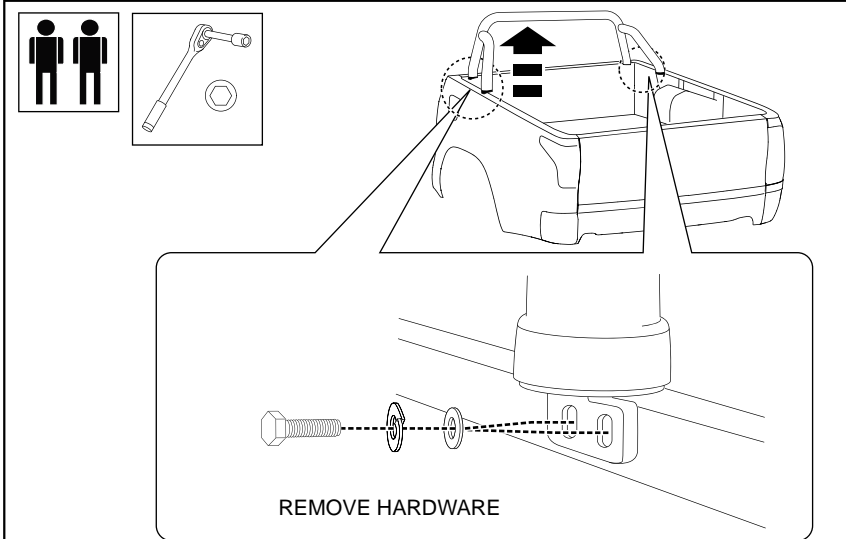


Diagram: 1 - REMOVE SPORTS BAR & HARDWARE

1.

Vehicles fitted with Sports Bar, complete step 1.

Remove the hardware holding the sports bar feet to the tub and carefully remove the sports bar. Return to the customer with all hardware.

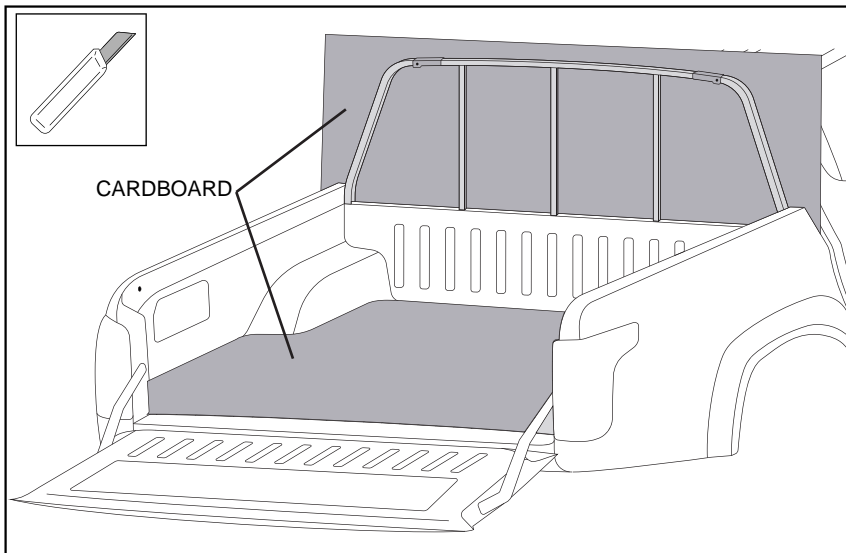


Diagram: 2 - PROTECT VEHICLE SURFACES

2.

Vehicles fitted with cabin guard, complete steps 2-6.

Using cardboard cut from the canopy carton, cut and place one piece inside the tub on the floor as a protection mat while installing the canopy. Place one piece between the tub and cabin as a protection mat while removing the cabin guard.

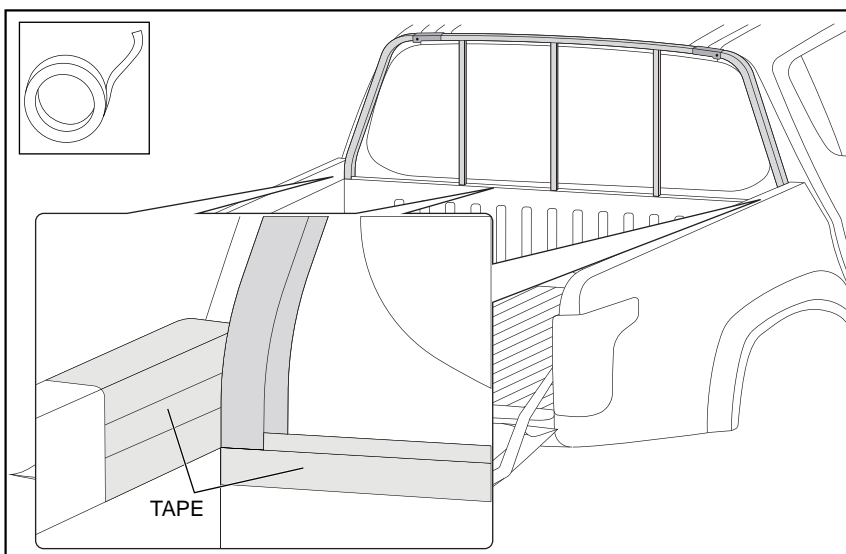


Diagram: 3 - APPLY MASKING TAPE

3.

Apply masking tape to the front and side tub rails, up to and around the cabin guard.

CABIN GUARD REMOVAL

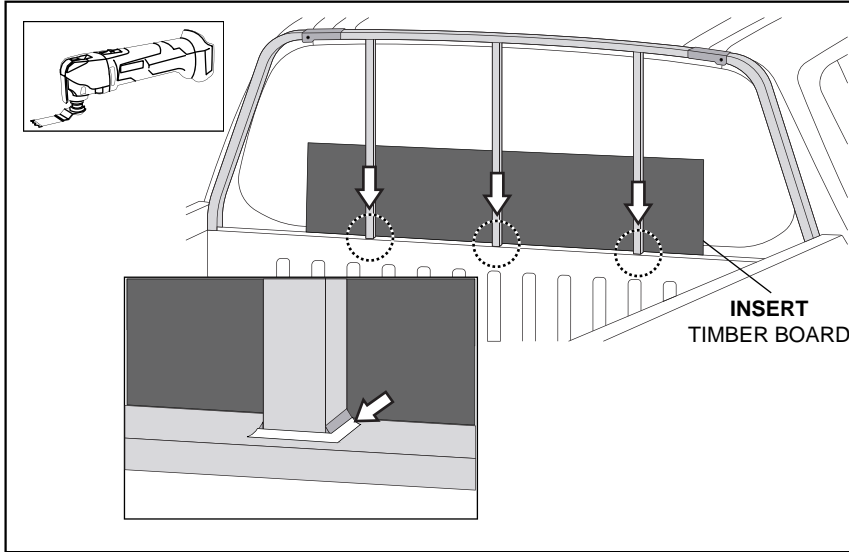


Diagram: 4 - REMOVAL OF CABIN GUARD

4.

IMPORTANT: Ensure the protective timber board is positioned behind each of the centre support bars before cutting.

Using a oscillating saw, completely cut through the three centre support bars at the base, flush to the front tub rail, taking care not to damage vehicle surfaces.

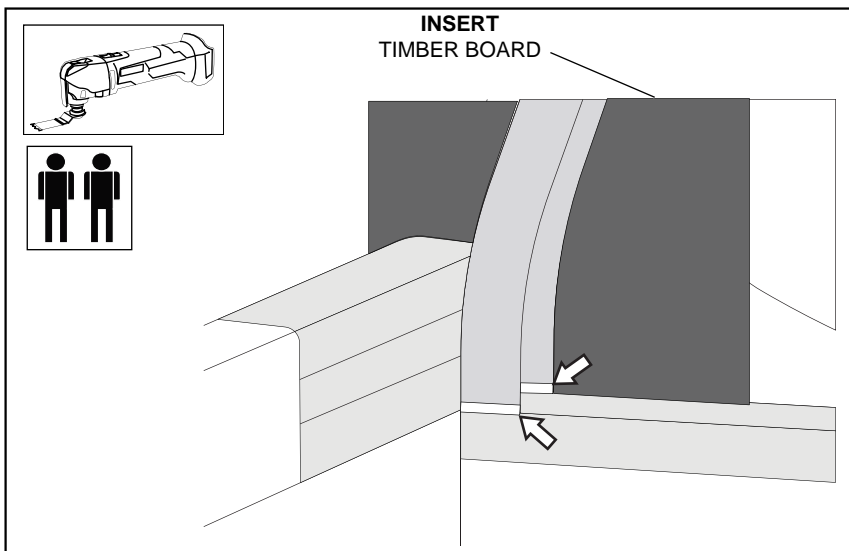


Diagram: 5 - REMOVAL OF CABIN GUARD

5.

IMPORTANT: Ensure the protective timber board is positioned behind the outer cabin guard bars before cutting. Two people are required to complete this step, one person will need to support the cabin guard and prevent it from damaging the vehicle while the other person finishes cutting through the cabin guard bars completely.

Using a oscillating saw, completely cut through the LH and RH outer cabin guard bars, flush to the front tub rail. Carefully remove cabin guard from vehicle and discard.

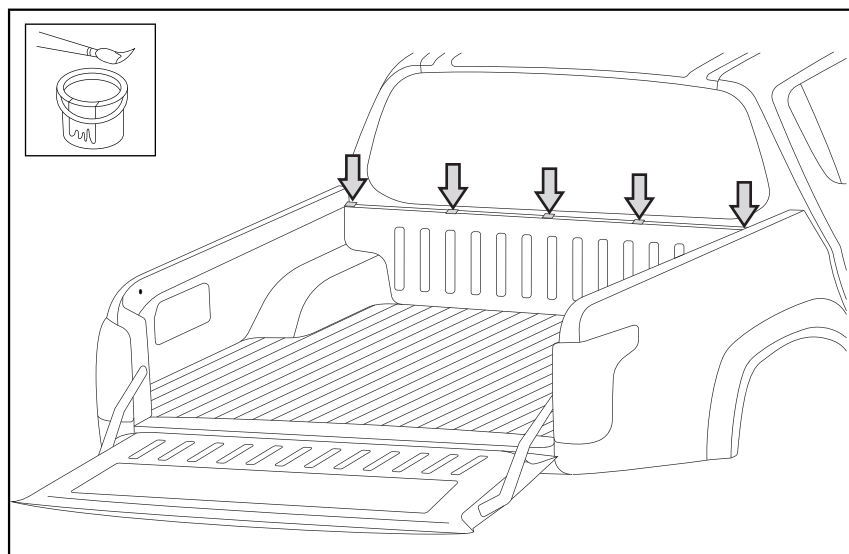


Diagram: 6 - PRIME VEHICLE SURFACES

6.

Using a suitable metal primer, paint all bare metal surfaces previously. Allow paint drying time, as per instructions on paint container.

TUB LINER TRIM

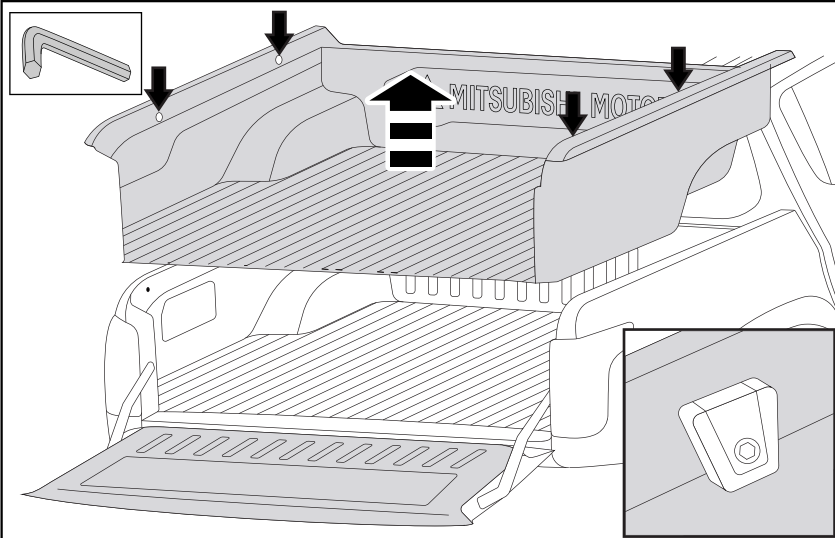


Diagram: 7 - REMOVE TUB LINER

7.

Vehicles fitted with OVER-RAIL Tub Liner, complete steps 7 to 9.

Using a 6mm Allen Key remove the 4 Tie-Down Hooks from the tub liner.

Remove tub liner.

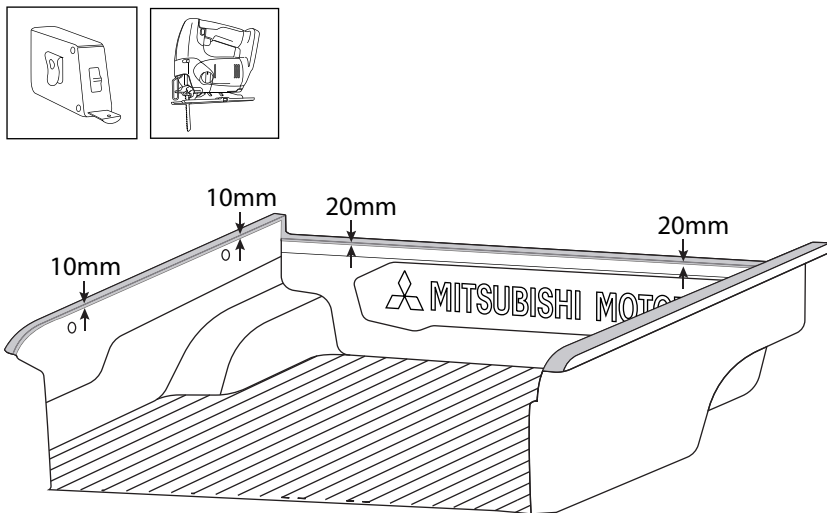


Diagram: 8 - TRIM TUB LINER TOP

8.

Vehicles fitted with OVER-RAIL Tub Liner, complete steps 7 to 9.

Mark a line 20mm down from the front top edge.

Mark a line 10mm down from the side top edge along tub walls LHS & RHS.

Trim the tub liner following the marked out sections.

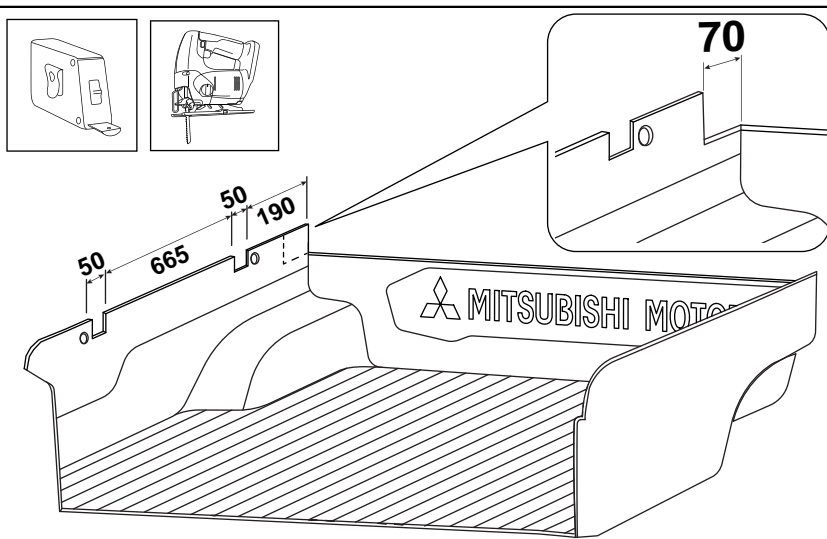


Diagram: 9 - TRIM TUB LINER FOR CLAMPS

9.

Vehicles fitted with OVER-RAIL Tub Liner, complete steps 7 to 9.

Measure and mark the tub liner sides for the clamps RHS & LHS.

Measure and mark the front corners as shown.

Trim the tub liner following the marked out sections as shown in detail.

Repeat for other side.

TUB LINER TRIM

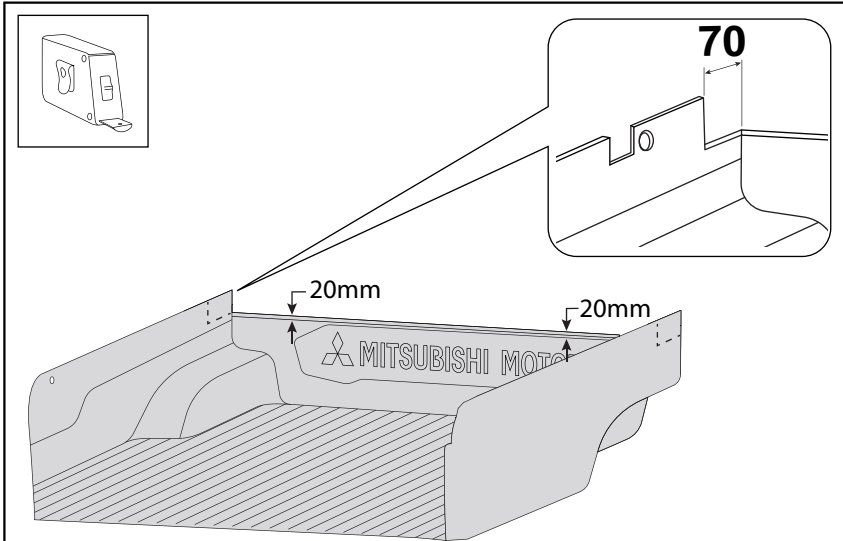


Diagram: 10 - UNDER-RAIL TUB LINER TRIM

10.

Vehicles fitted with UNDER-RAIL Tub Liner, complete step 10.

Mark and trim 20mm down from the front top edge as shown.

Trim the tub liner front corner following the marked out sections as shown in detail.

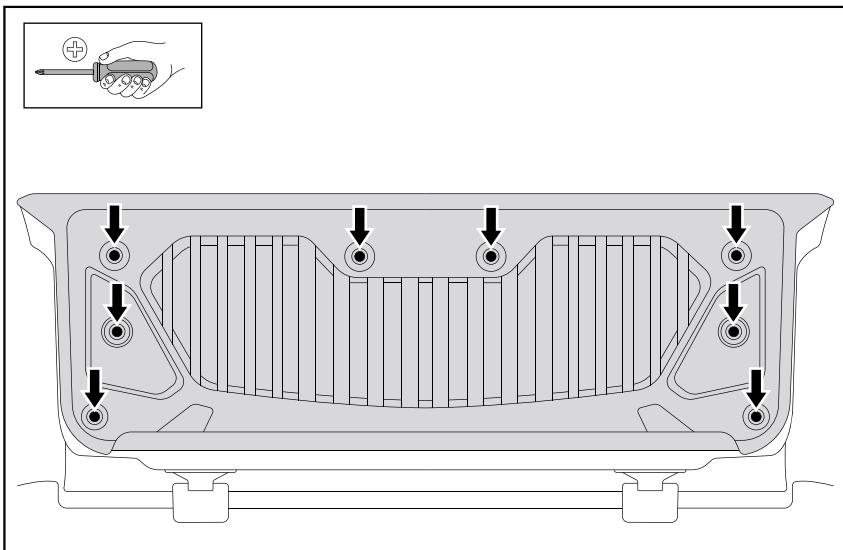


Diagram: 11 - REMOVE TAILGATE LINER

11.

Vehicles fitted with Tailgate Liner, complete step 11.

Remove the eight scrivets securing the tailgate liner to the tail gate. Do not discard scrivets.

Remove tailgate liner.

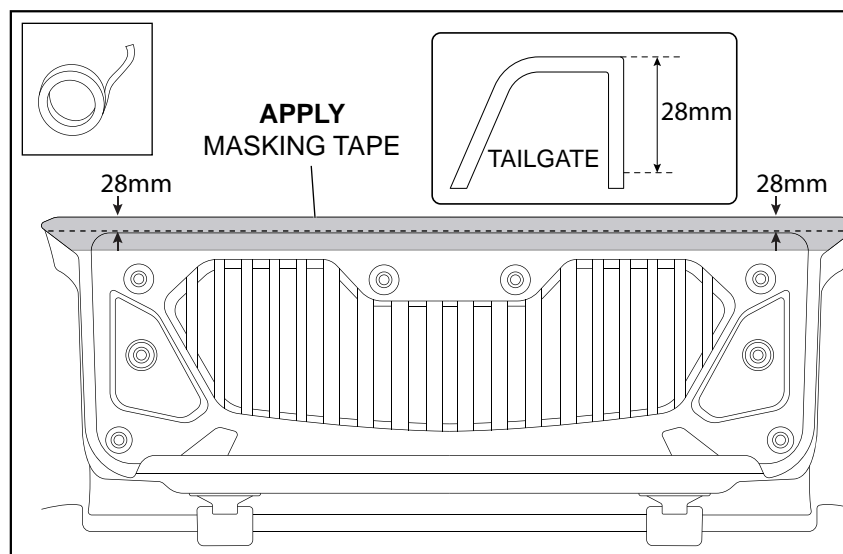


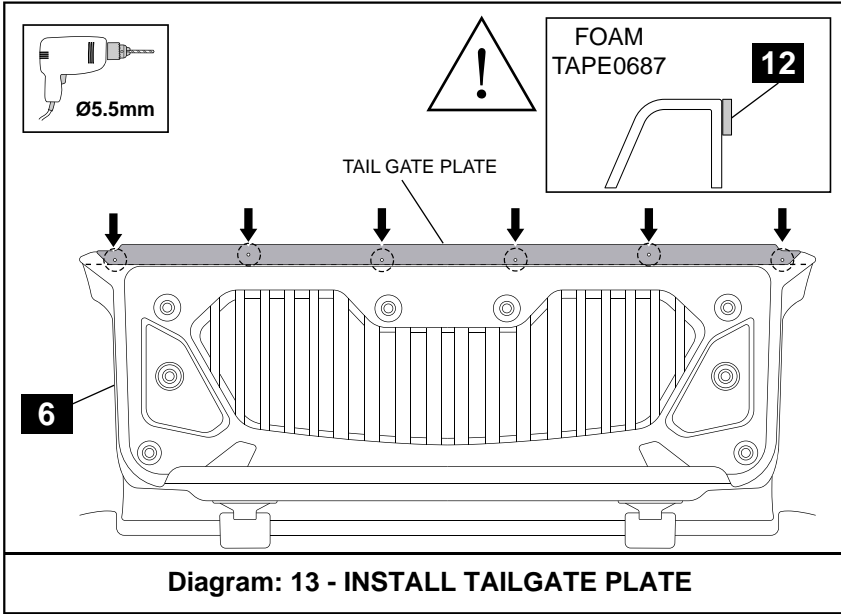
Diagram: 12 - INSTALL TAILGATE PLATE

12.

Apply masking tape to the top inside surface of the tailgate as shown.

Mark a line along the inside edge of the tailgate, 28mm from the top edge.

TUB LINER TRIM



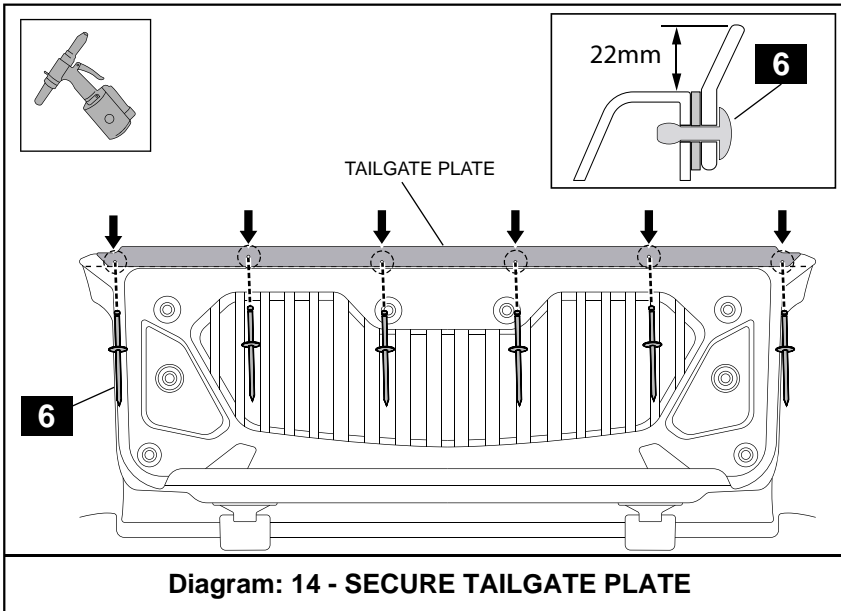
13.

Position the tailgate plate centrally on the tailgate aligning with the marked 28mm line. Mark the six holes in the tailgate plate onto the tailgate and remove the plate.

Drill the marked holes with a 5.5mm drill bit.

Remove masking tape and apply the rust inhibitor to all the drilled holes.

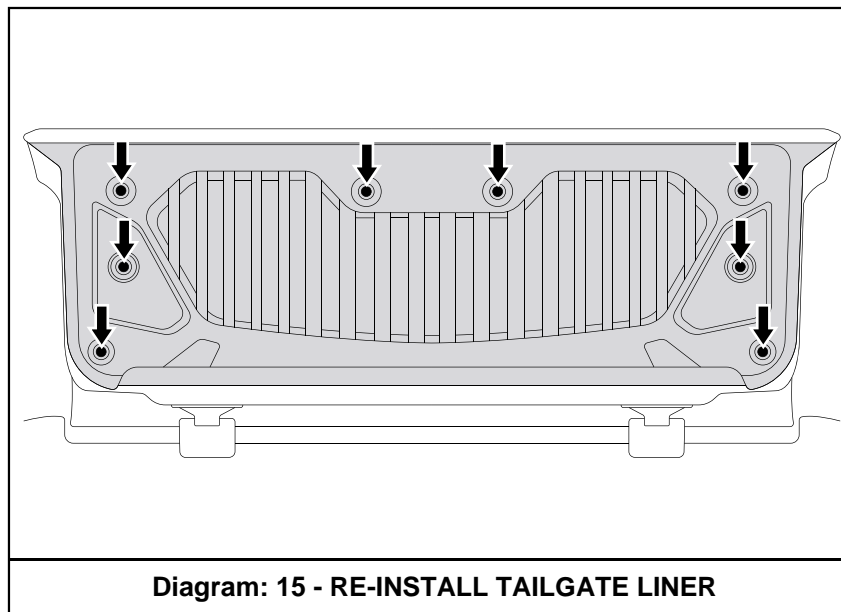
Apply foam tape (12) to the tailgate as shown in detail.



14.

Position the tailgate plate centrally on the tailgate aligning with the drilled holes.

Secure the tailgate plate to the tailgate with six rivets.



15.

Vehicles fitted with Tailgate Liner, complete step 15.

Re-install the tailgate liner to the tailgate with the eight previously removed scrivenets.

TUB PREPARATION

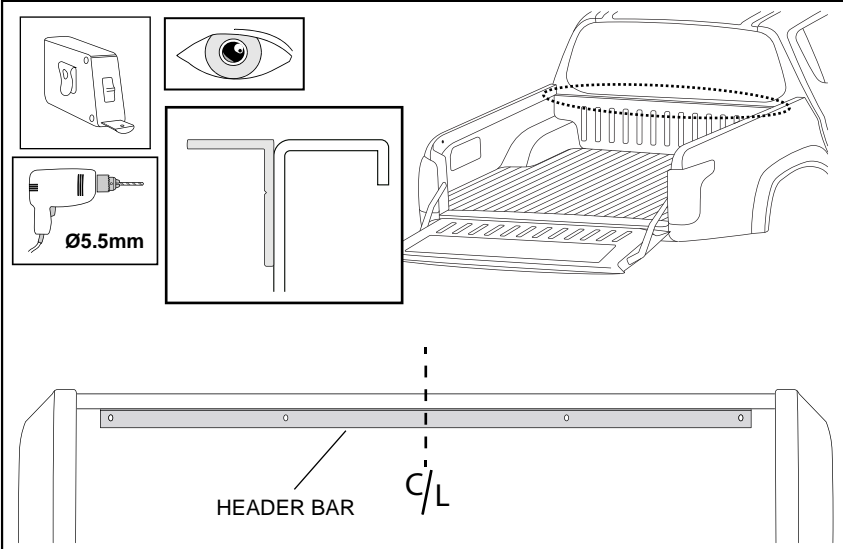


Diagram: 16 - FIT HEADER BAR

16.

Fit the header bar centrally on the front rail of the tub. Top of the header bar flush with vehicle tub.

Mark the four holes on the header bar vertical face inside the tub. Drill with 5.5mm drill bit through the front of the tub.

Apply the rust inhibitor to all drilled holes.

Important



Fit the header bar centrally to the front rail.

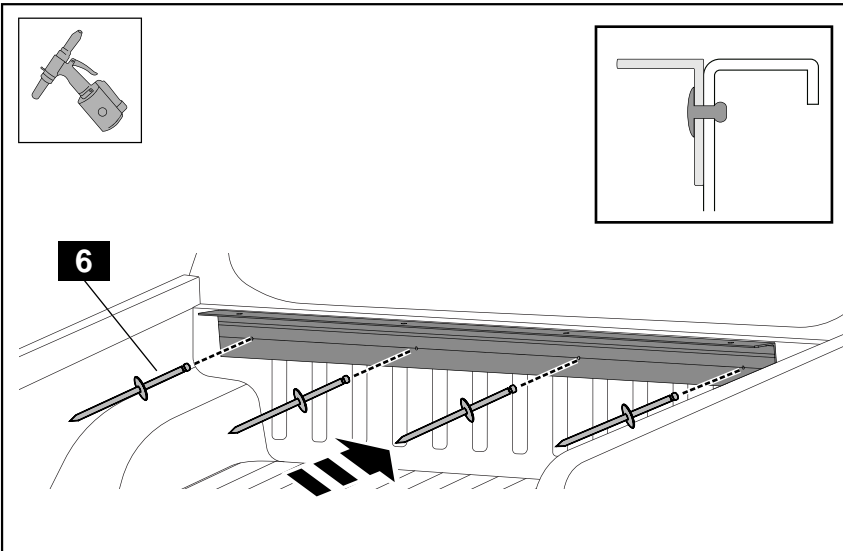


Diagram: 17 - SECURE HEADER BAR

17.

Secure the header bar to the front rail with four rivets.

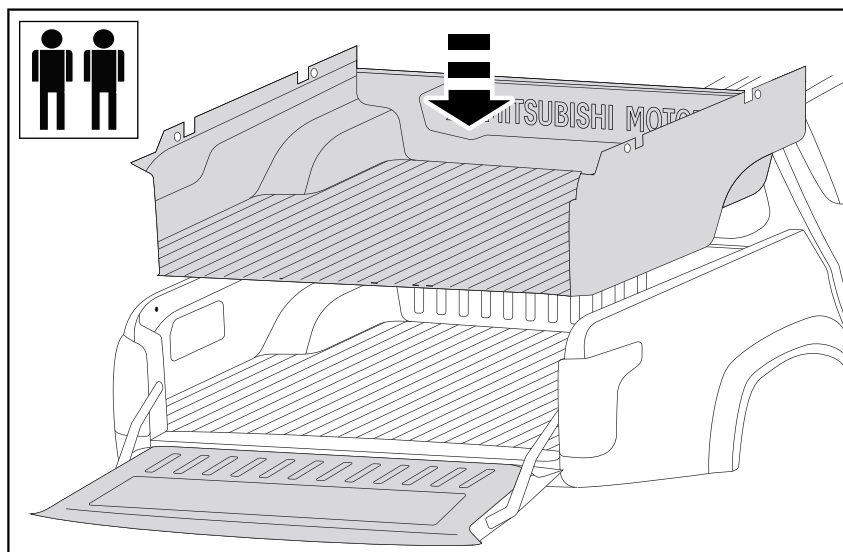


Diagram: 18 - RE-INSTALL TUBLINER

18.

Vehicles fitted with Tub Liner, complete step 18 and 19.

Re-install the tub liner.

TUB PREPARATION

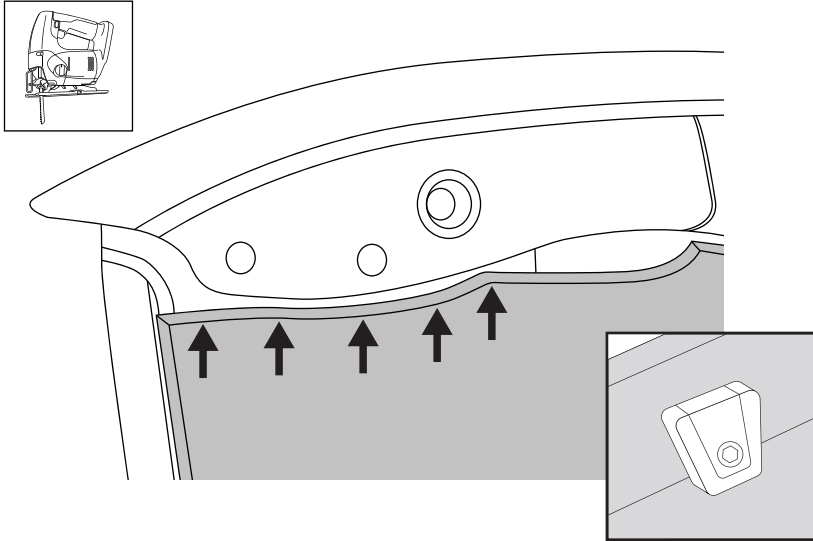


Diagram: 19 - TRIM TUB LINER

19.

Vehicles fitted with Tub Liner, complete step 18 and 19.

Trim the rear section of the Tub liner, following the edge of the panel as shown. This will allow the Tub liner to sit back without interfering with the bracket.

Refit the four tie down hooks.

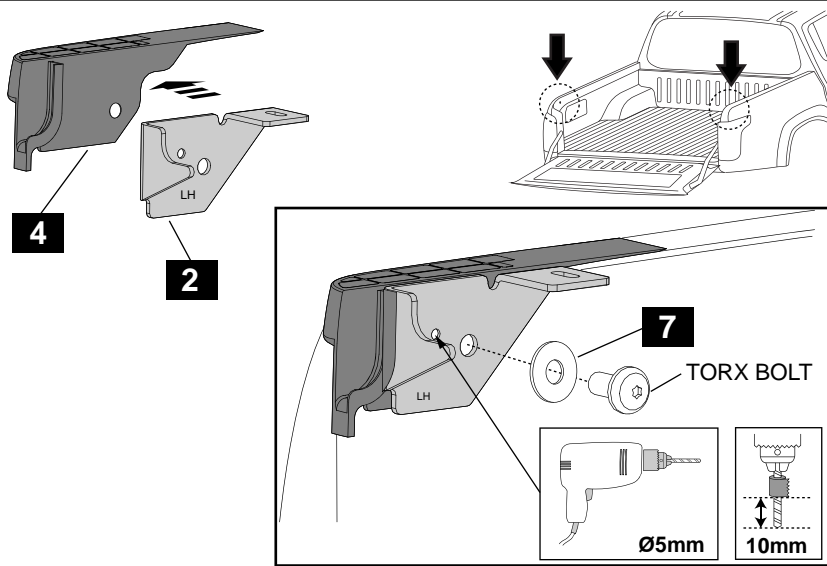


Diagram: 20 - INSTALL REAR BRACKETS

20.

Note: Score paint around the Torx bolt. Remove and retain the M8 Torx bolt from the rear corner of the tub. Repeat for both sides.

Note: Cut hole in the rubber seal (4&5) for the Torx bolt.

Assemble the rear mount bracket (2) and rubber seal (4) together. Secure the bracket to the side rail with the previously removed M8 Torx bolt and M8 flat washer (7). Do not torque the bolt.

Drill the hole in the bracket with 5mm drill using 10mm stop. Remove bracket and apply rust inhibitor to the drilled hole.

Repeat for both sides.

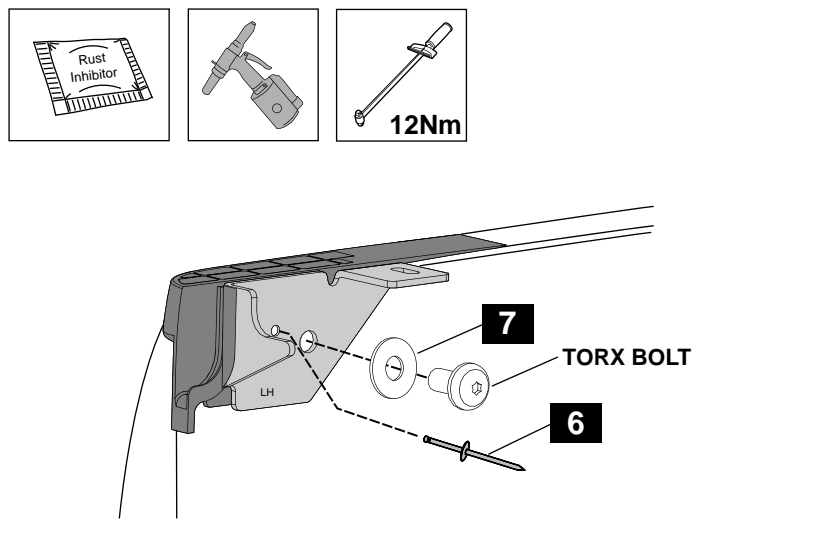


Diagram: 21 - INSTALL REAR BRACKETS

21.

Note: Apply Loctite 243 to the Torx bolt.

Secure the bracket to the side rail with the previously removed M8 Torx bolt and M8 flat washer (7).

Loosely fit the rivet (6) into the drilled hole. Torque the Torx bolt to 12Nm.

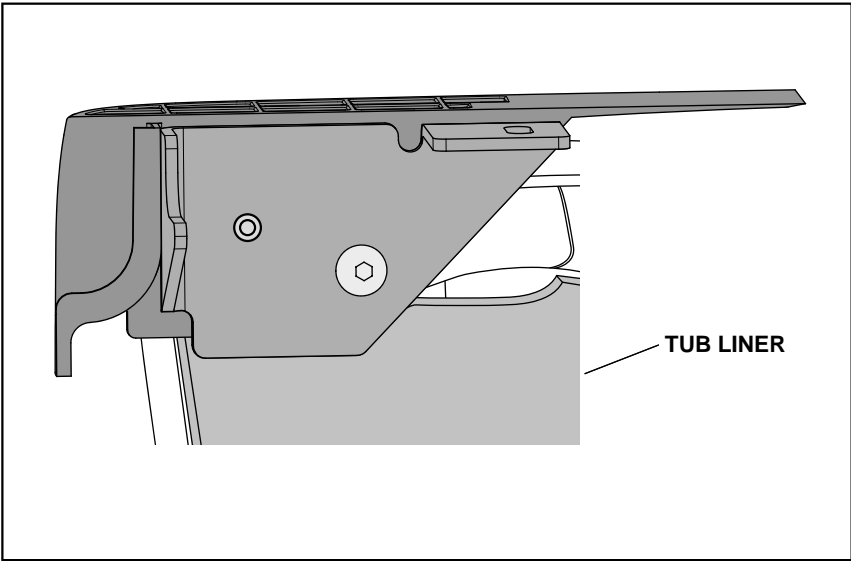
Using rivet gun secure the bracket with one rivet.

Note: Rubber block will sit high until compressed by canopy weight for correct sealing.

Repeat for both sides.

TUB PREPARATION

Vehicles fitted with Tub Liner.



TUB LINER POSITION

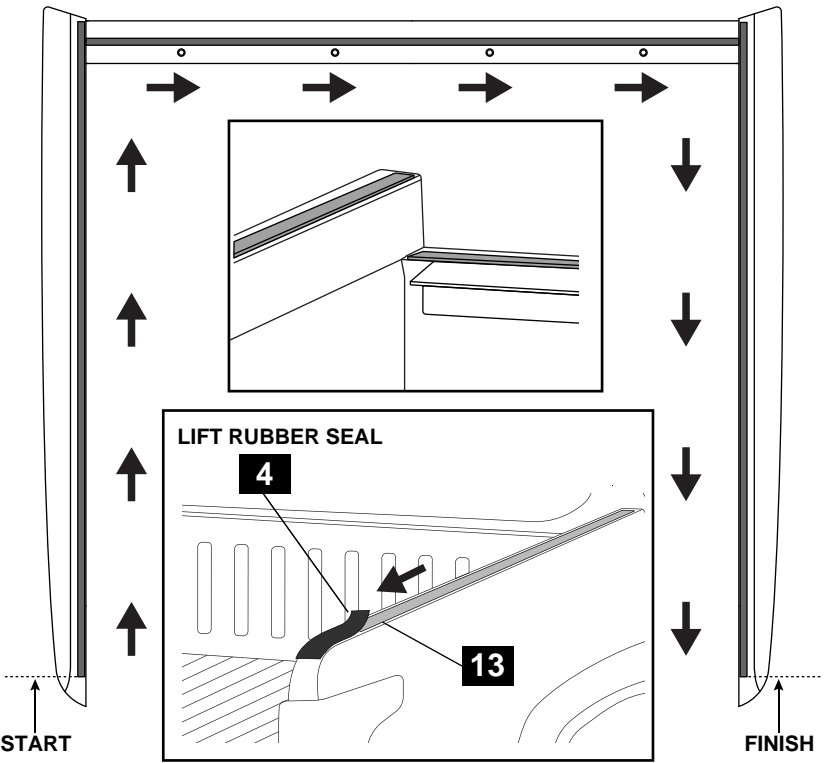
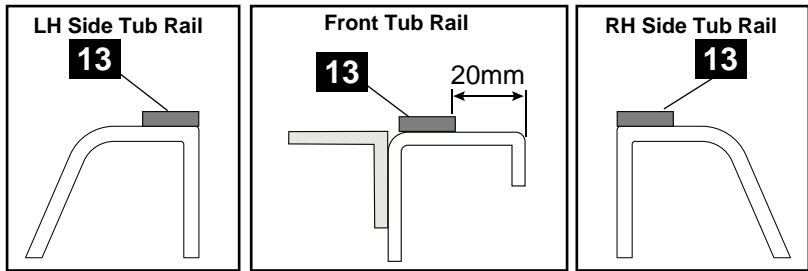
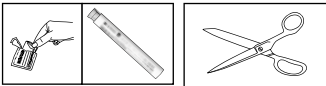


Diagram: 22 - INSTALL WATER SEALING TAPE

22.

Using alcohol wipes provided clean all top rail areas of the tub and wipe away residue with a dry clean cloth. If heavy cleaning is required use isopropyl alcohol and wipe away residue with a dry clean cloth. Using primer stick prime top rails of the tub where foam tape will be applied, and allow to dry.

Apply foam tape (13) to bed rails and header bar. Ensure foam tape is fully adhered by applying firm downward pressure to the foam tape.

Lift the rubber seal (4) and feed the tape (13) under it. Stop before the end of rubber seal edge.

Important
 **DO NOT STRETCH FOAM TAPE WHILE APPLYING**

CANOPY POSITIONING

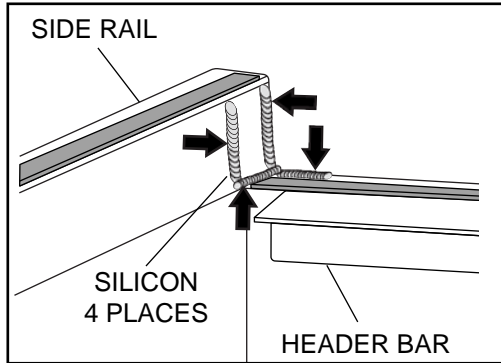
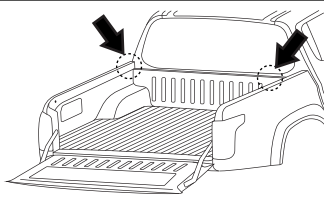


Diagram: 23 - APPLY SILICON



23.

With a clean cloth wipe down all areas of the internal front tub corners where the silicon is to be applied as shown. Spray these areas with water, Do Not dry.

Apply a 15mm bead of non-acetic silicon (neutral cure) to the top of the inside of the tub and header bar as shown.

Repeat process for the other side of the vehicle.

Important



Silicon bead must be 15mm thick.



FRONT CORNER RHS SHOWN

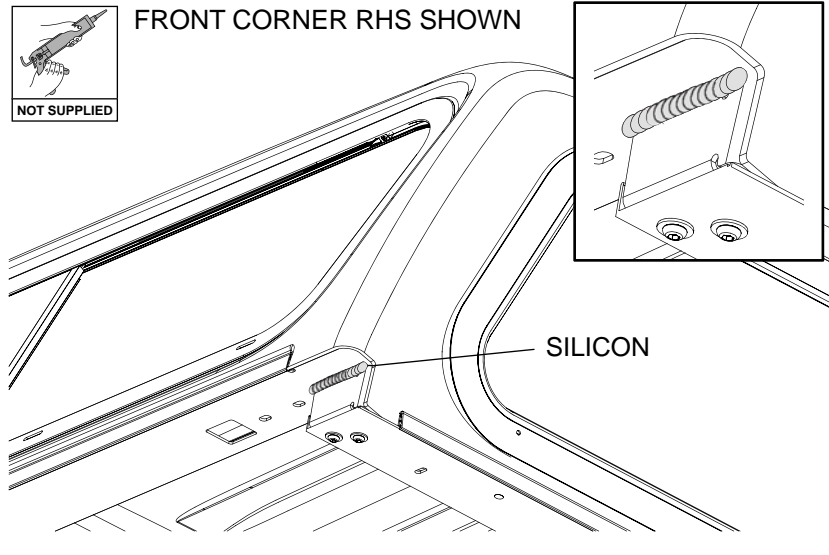


Diagram: 24 - APPLY SILICON

24.

With a clean cloth wipe down all areas of the front canopy corners where the silicon is to be applied as shown. Spray these areas with water, Do Not dry.

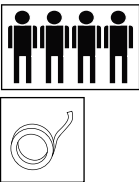
Apply a 15mm bead of non-acetic silicon (neutral cure).

Repeat process for the other side of the canopy.

Important



Silicon bead must be 15mm thick.



DO NOT SLIDE CANOPY ON FOAM TAPE AND SILICON

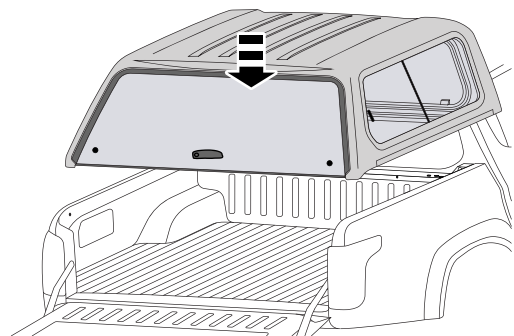
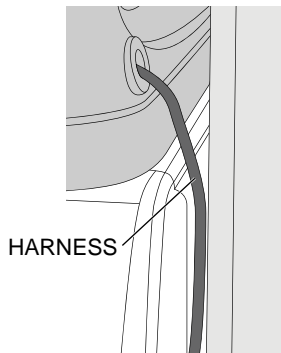


Diagram: 25 - FIT CANOPY TO TUB



FEED CANOPY HARNESS BETWEEN TUB AND CABIN DOWN TO CHASSIS RAIL

25.

Clean front of canopy including the front window. Spray foam tape with soapy water to assist positioning.

First tape the wiring harness to the RH side window with masking tape.

Four people are required to lift the canopy. Position the canopy onto the vehicle tub carefully.

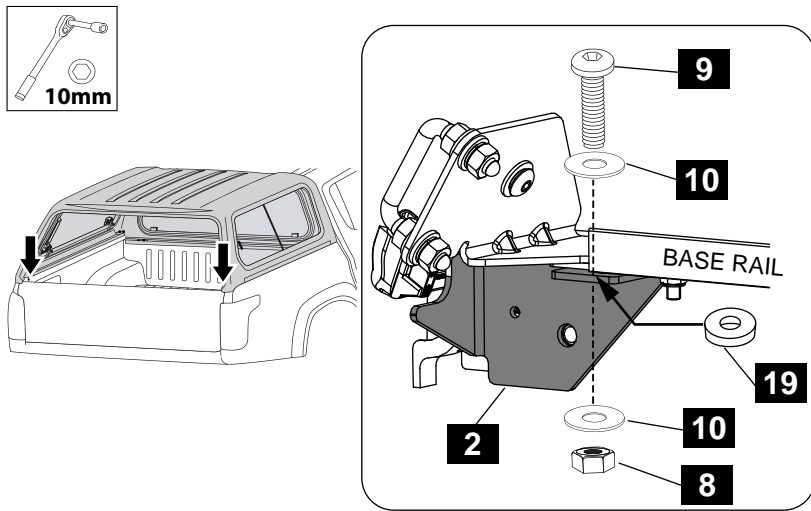
Remove masking tape and feed canopy harness down between tub and cabin (right hand side of vehicle) so it is accessible under the vehicle on the outside of the chassis rail.

Important



Take care during positioning of the canopy. Excessive movement will disrupt the foam tape and silicon.

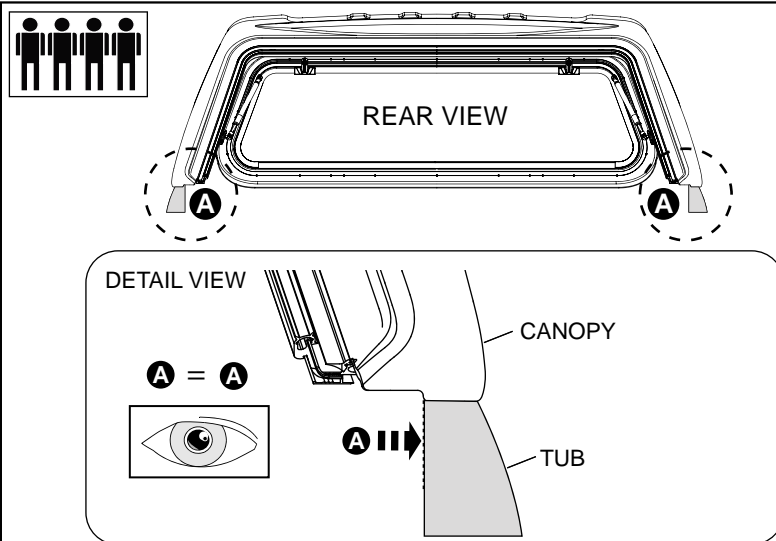
CANOPY POSITIONING



26.
Lift the rear canopy corner and insert the 3mm spacer (MISC4523) between the baserail and the rear mount bracket (2). Repeat for the other side.
Loosely secure the canopy to the rear mount brackets, using one M6x25mm bolt, two M6 flat washers and one M6 hex nut for each bracket.

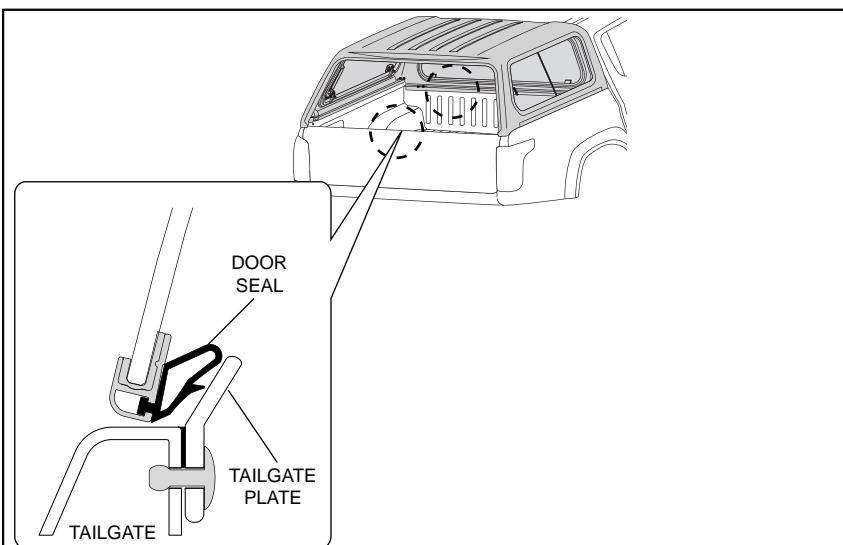
Note: Final torque will be applied in step 31.

Diagram: 26 - SECURE CANOPY TO REAR MOUNT BRACKETS



27.
With the tailgate open, check the canopy rear alignment to the tub as shown in the detail view.
If adjustment is required, lift the rear of canopy and move to the required position.

Diagram: 27 - ALIGN REAR OF CANOPY TO TUB



28.
With the rear door and tailgate closed, position the canopy rearward until the canopy door seal is partially compressed against the tailgate plate.
Adjust if required to ensure rear door sash seal is in good contact with tailgate plate without excessive force required for closing rear door.

Diagram: 28 - CHECK CANOPY REAR DOOR SEAL

CANOPY ATTACHMENT

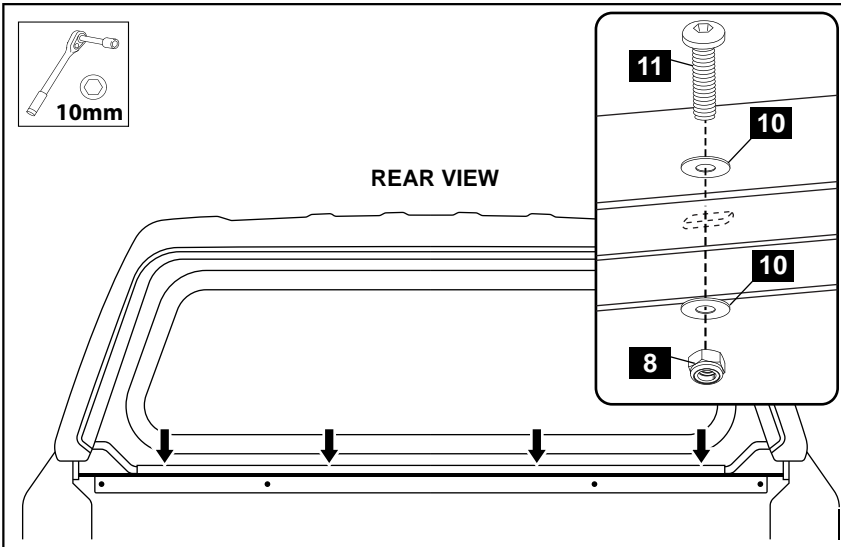


Diagram: 29 - SECURE CANOPY TO HEADER BAR

29.

Loosely secure the canopy to the header bar with four M6x20 bolts, eight flat washers and four nuts.

Note: Final torque will be applied in step 31.

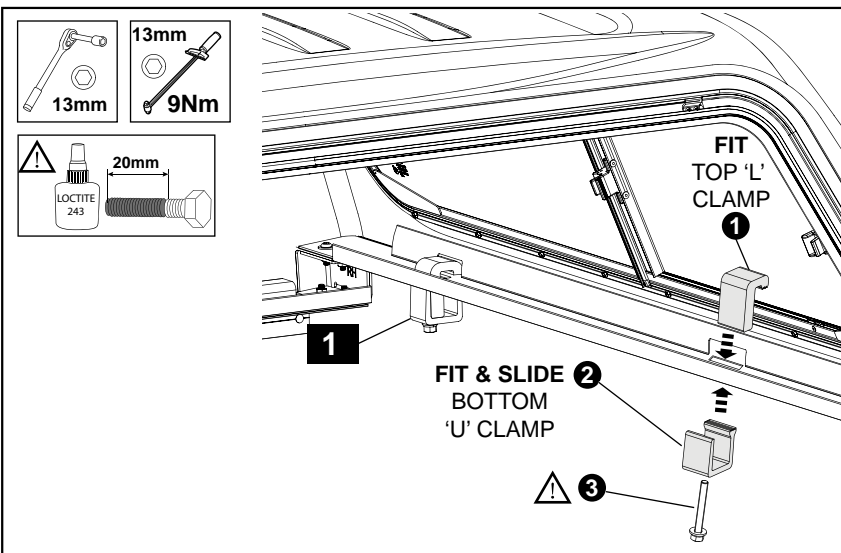


Diagram: 30 - SECURE CANOPY TO SIDE RAIL

30.

Fit two clamps (CNPY0007) to the two holes in the canopy base rails both sides by fitting the top L clamp down through the hole in the rail and sliding the lower U clamp along the side rail. Secure with the bolt and torque to 9Nm.

Important



Apply Loctite 243 to a minimum of 20mm along thread of the bolts. Torque to 9Nm.

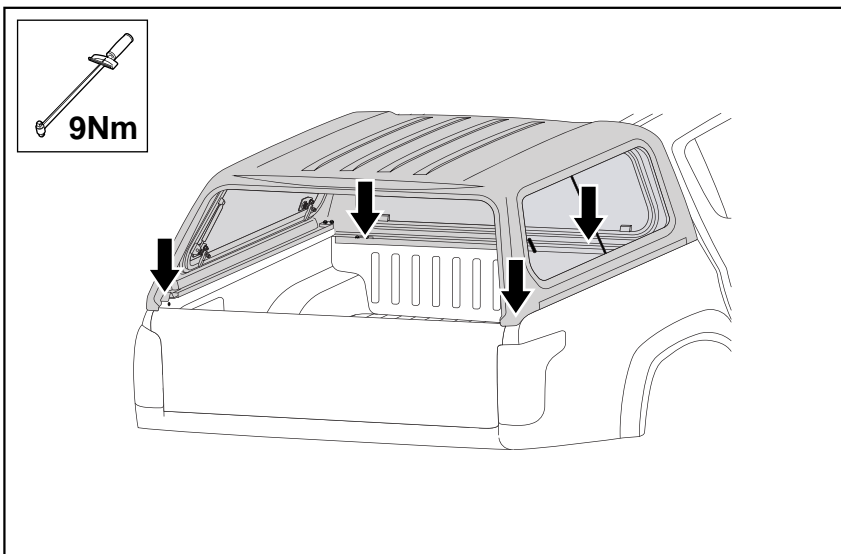


Diagram: 31 - TORQUE ATTACHMENT BOLTS

31.

Tighten the header bar bolts to 9Nm followed by the rear brackets bolt to 9Nm.

Carefully clean excess silicon from front corners of the canopy.

CANOPY HARNESS INSTALLATION

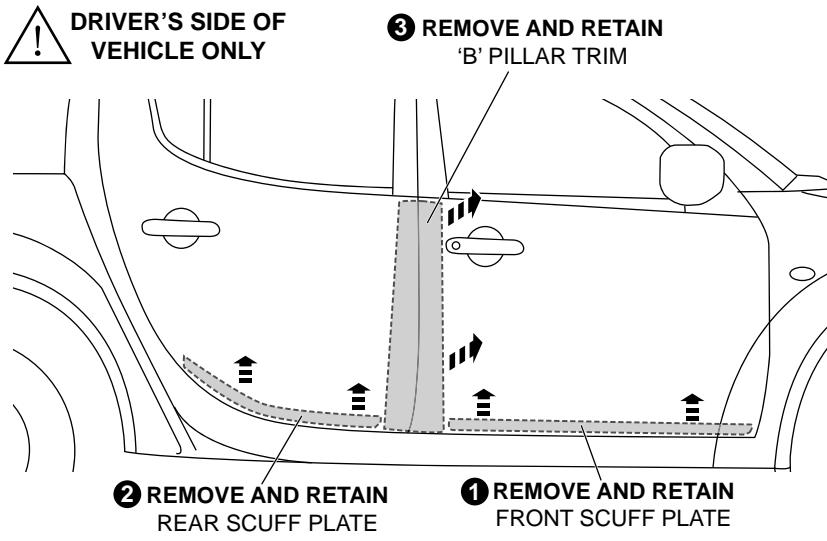


Diagram: 32- REMOVE VEHICLE PARTS

32.

Open front and rear driver's side doors. Remove and retain Front and Rear driver's side scuff plates. Remove and retain 'B' Pillar trim.

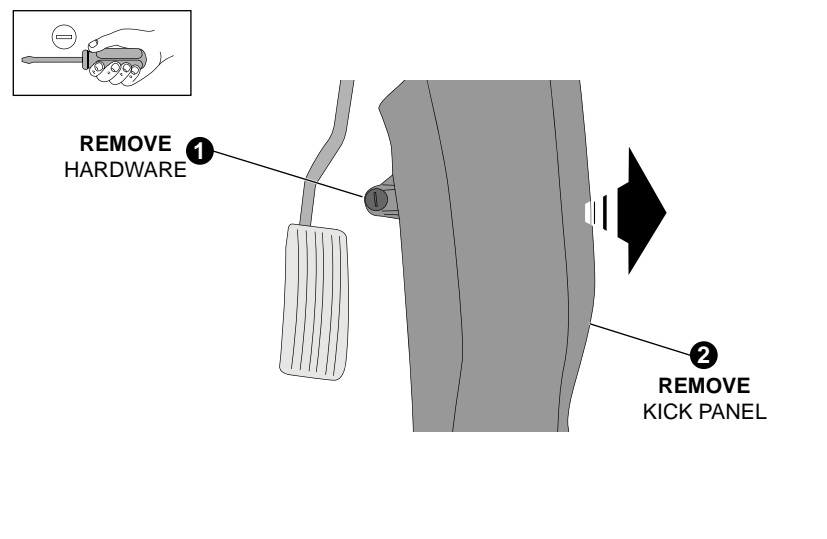


Diagram: 33 - REMOVE VEHICLE PARTS

33.

Remove and retain driver's side kick panel and hardware as shown.

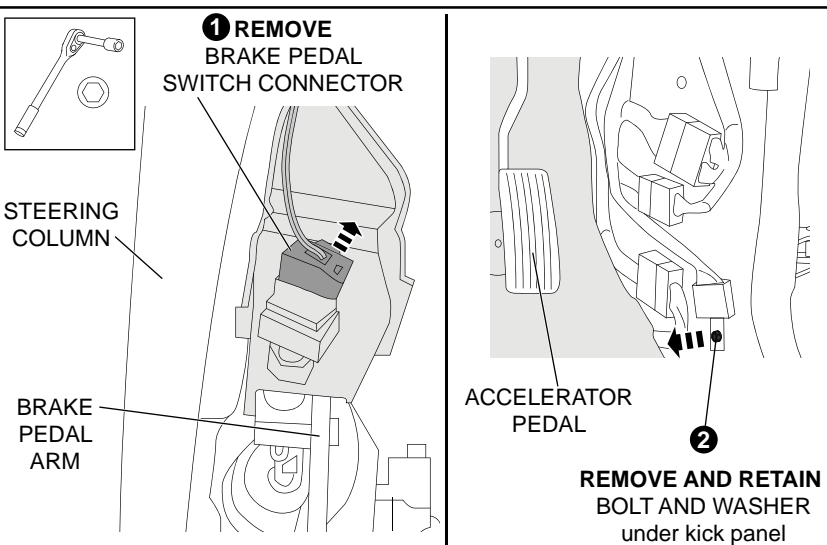


Diagram: 34 - REMOVE VEHICLE PARTS

34.

Unplug the brake pedal switch male connector from the brake pedal switch as shown. Remove and retain the bolt securing a connector (negative earth) to the vehicle as shown.

CANOPY HARNESS INSTALLATION

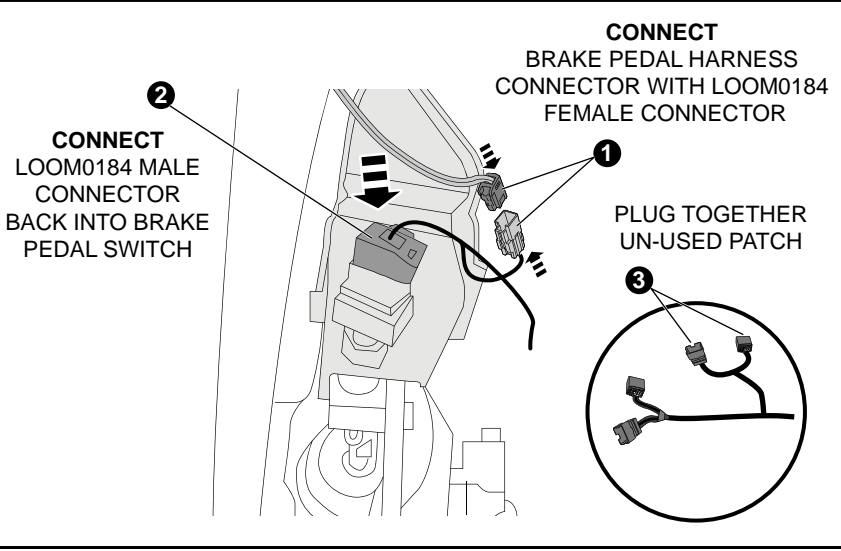


Diagram: 35 - CONNECT LOOM0184 TO THE BRAKE

35.

Using the vehicle wiring patch harness from the hardware kit connect the female connector to the brake pedal switch male connector as shown. Connect the male connector from the vehicle wiring patch harness back into the brake pedal switch as shown.

For **MQ Variant**, use large 4 pin connectors and plug together the unused smaller "T-Patch".

For **MR Variant**, use small 4 pin connectors and plug together the unused larger "T-Patch".

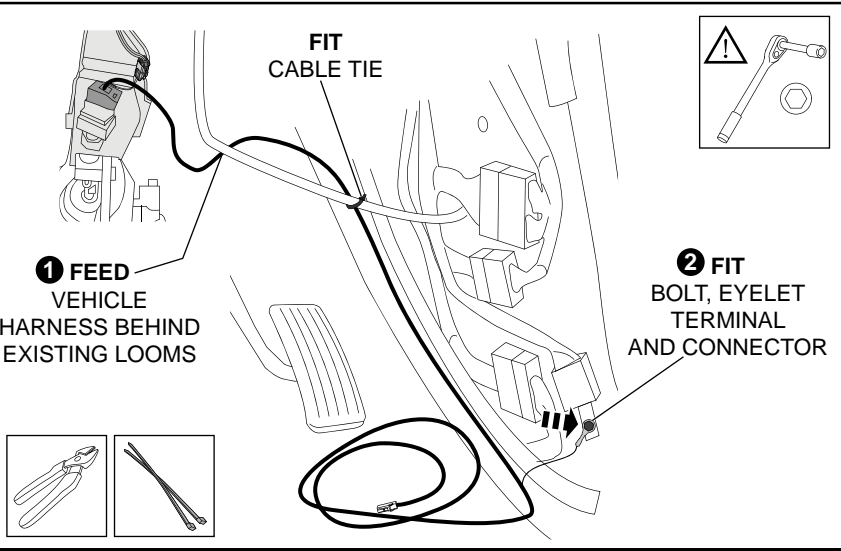


Diagram: 36 - CONNECT VEHICLE HARNESS

36.

Route vehicle harness behind existing harness across to the kick panel and run down to the front door scuff plates.

Fit one (1) short cable tie to secure the vehicle harness to existing harness as shown. Trim excess tie with side cutters.

Re-assemble the previously removed bolt and connector with the vehicle wiring patch harness eyelet terminal and secure to the vehicle as shown.

IMPORTANT: Be careful when tightening to ensure wires are not stripped out of the eyelet terminal.

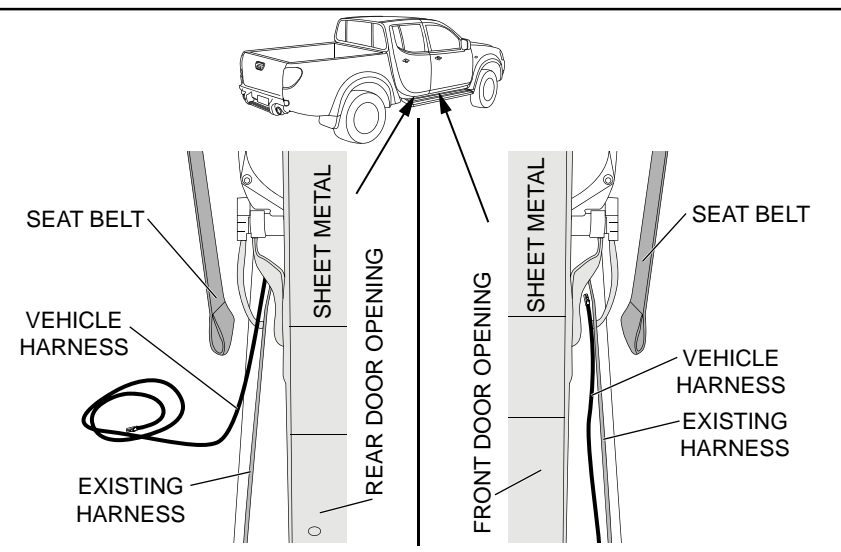


Diagram: 37 - ROUTING VEHICLE HARNESS

37.

Route vehicle harness from the front door scuff plate to the rear door scuff plate, ensuring the harness sits between the 'B' pillar sheetmetal and the seat belt as shown.

CANOPY HARNESS INSTALLATION

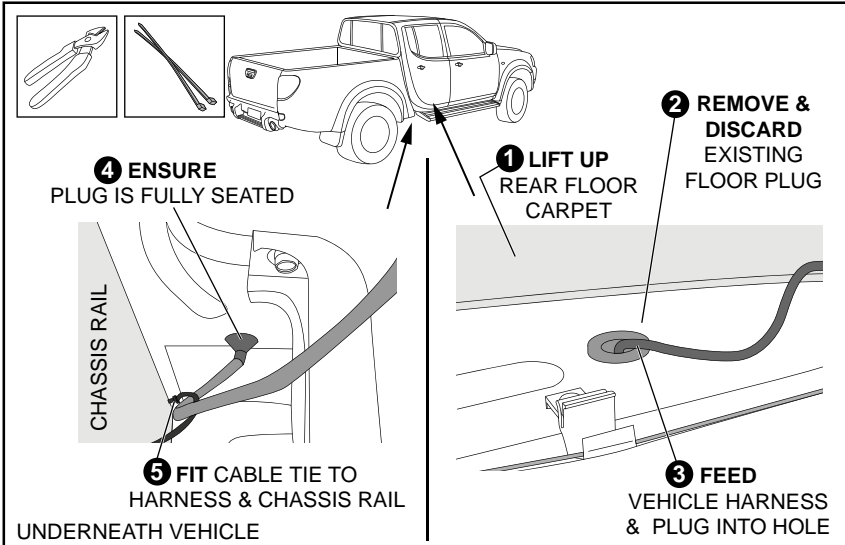


Diagram: 38 - ROUTING VEHICLE HARNESS

38.

Lift up drivers side rear floor carpet. Remove and discard the existing plug in the floor. Feed the vehicle harness down through the floor and fit the vehicle harness plug into the sheetmetal. **Important: Check under the vehicle that plug is correctly located into the sheetmetal and fully seated to prevent water entering the vehicle.** Attach one (1) long cable tie to secure the vehicle harness to the top of the chassis rail as shown. Trim excess tie with side cutters.

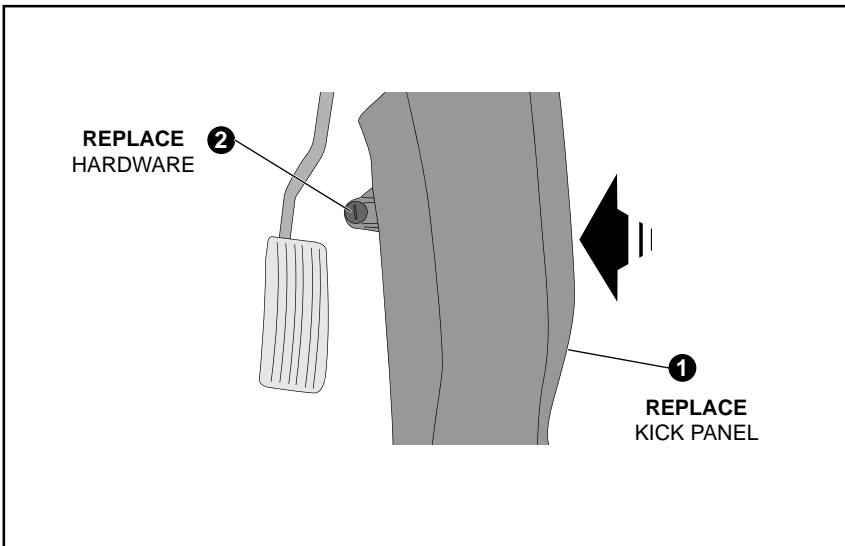


Diagram: 39 - REPLACE VEHICLE PARTS

39.

Replace driver's side kick panel and hardware as shown.

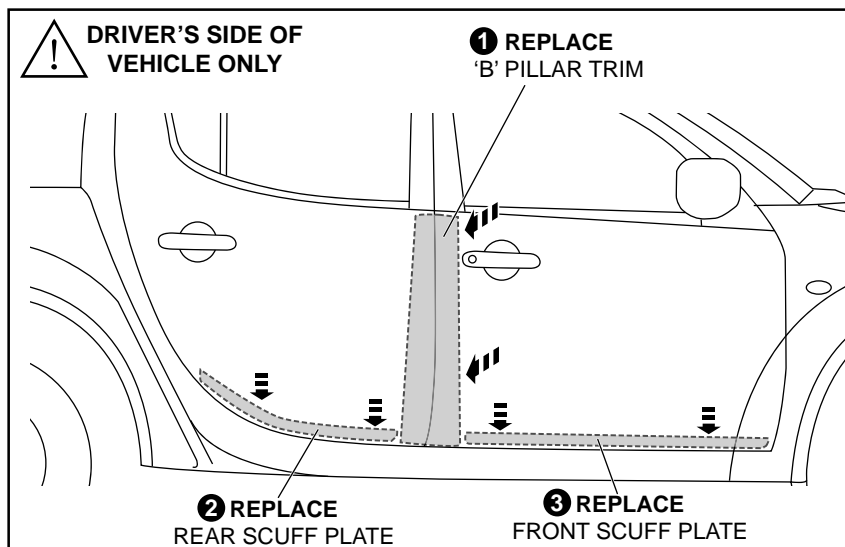


Diagram: 40 - REPLACE VEHICLE PARTS

40.

Replace driver's side 'B' Pillar trim. Replace Front and Rear driver's side scuff plates.

CANOPY HARNESS INSTALLATION

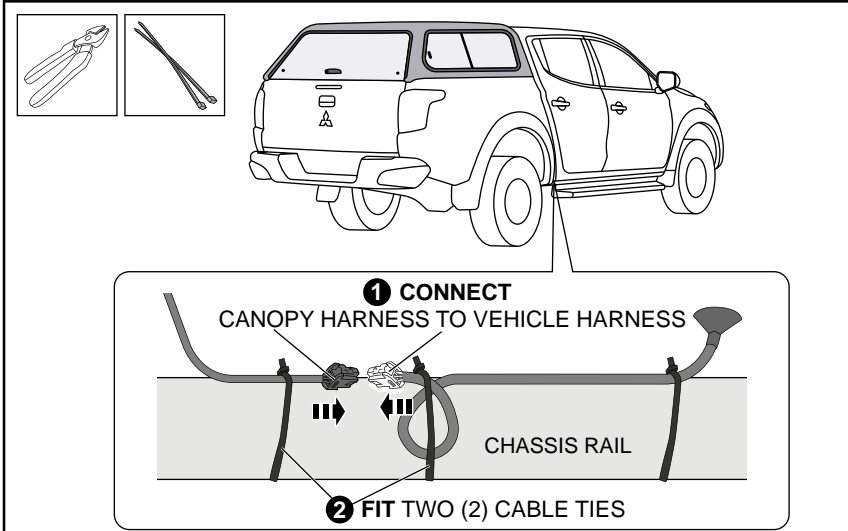


Diagram: 41 - CONNECT VEHICLE & CANOPY HARNESSES

41.

Feed the canopy harness along the chassis rail. If there is excess length on the vehicle harness, loop the harness near the connector as shown and secure it to the chassis rail with one (1) long cable tie.

Connect the canopy harness connector to the vehicle harness connector as shown.

Attach one (1) long cable tie to the canopy harness near the connector, to secure it to the chassis rail as shown.

Trim excess ties with side cutters.

IMPORTANT: Wiring harnesses should be positioned away from the exhaust system side. Preferably place it on the top side of the chassis rail.

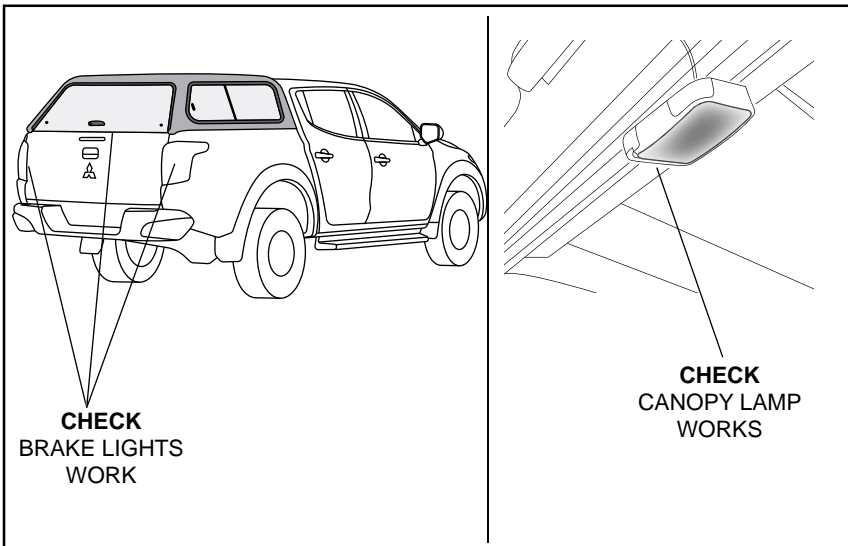


Diagram: 42 - CHECK BRAKE LIGHTS AND CANOPY LIGHT

42.

Two people are required to check the canopy brake light (if fitted) is operational after depressing the brake pedal.

Then open the rear window and check that the internal canopy lamp is operating correctly when switched to the 'ON' position only.

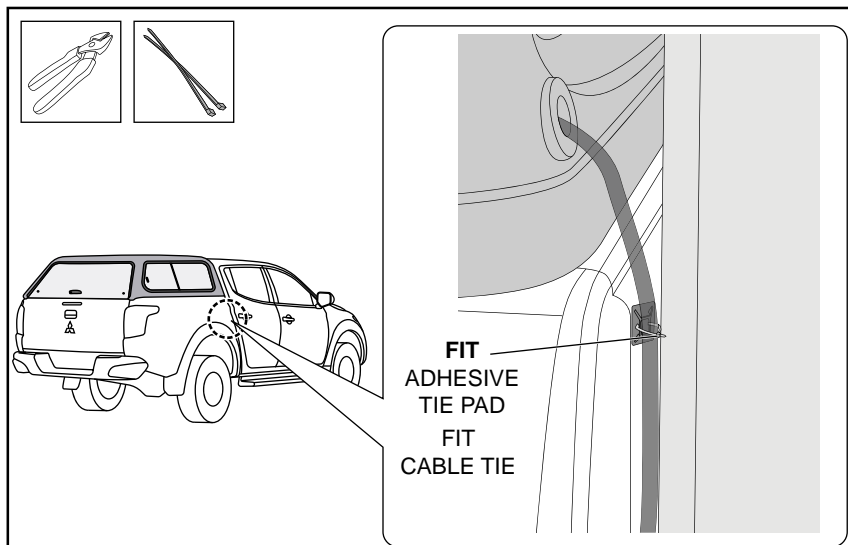


Diagram: 43 - SECURE CANOPY HARNESS

43.

Using alcohol wipe provided in the kit, clean the driver's side top corner of the tub as shown.

Wipe away residue with a dry clean cloth.

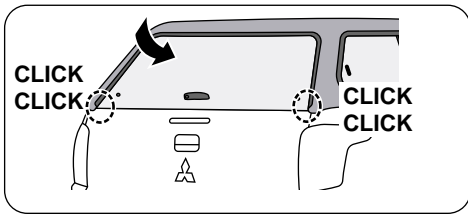
Remove tape liner from adhesive tie pad and position on the tub in area previously cleaned.

Apply pressure to ensure maximum adhesion.

Secure the canopy wiring harness one short cable tie as shown.

Trim excess tie with side cutters.

CANOPY HARNESS INSTALLATION



CLOSE REAR DOOR & CHECK LATCHES ENGAGE 2X CLICKS → OK

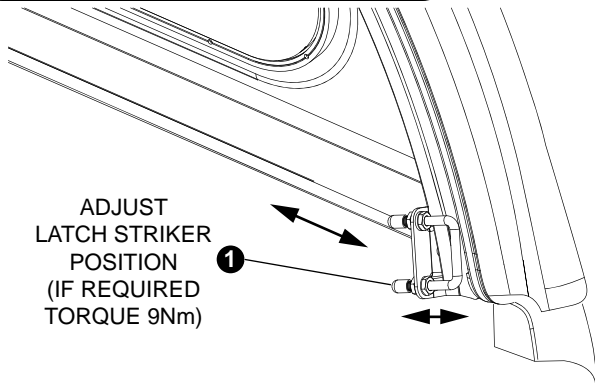
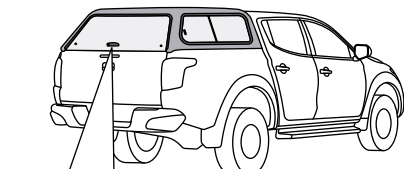


Diagram: 44 - CHECK LATCHING

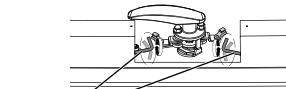
44. If required, adjust the latch striker height so that the rear door correctly engages when closed.
If the latch striker is adjusted, tighten the striker nuts to 9Nm.



Important: The latch system is a two stage system. Ensure that the rear door latches engage to the second stage when the rear door is closed.

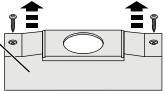


ANTI-CLOCKWISE = LENGTHEN

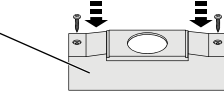


3 ADJUST LENGTH OF PULLRODS BY ROTATION

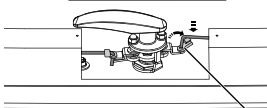
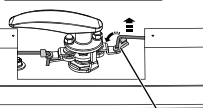
1 REMOVE INTERIOR LOCK COVER



6 REPLACE INTERIOR LOCK COVER



4 RE-CHECK LOCK FUNCTION



2 UNCLIP PULLRODS FROM RETAINER CLIPS

5 CLIP PULLRODS INTO RETAINER CLIPS

Diagram: 45 - WATER LEAK TESTING

45. Test both canopy keys work to lock and unlock the rear door and side lift up window. Open both side windows.

If the rear door handle does not lock, remove the interior lock cover, unclip the pull rods and wind to lengthen them slightly. Re-check rear door lock function.

When rear door locks replace interior lock cover, and add the canopy keys to the customers vehicle keys.

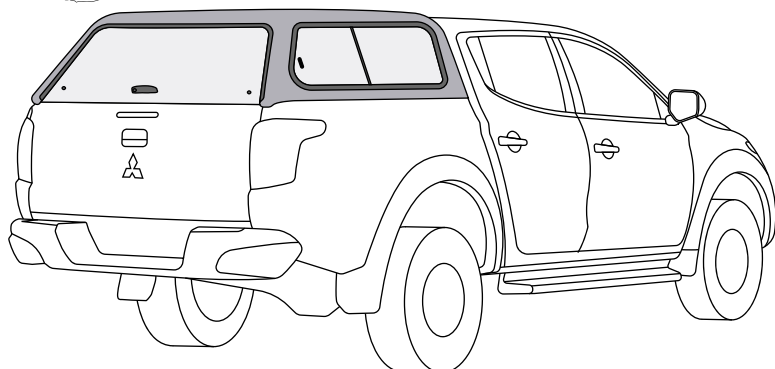
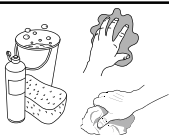


Diagram: 46 - FINAL CLEANING

46. Clean canopy including all windows and vehicle thoroughly.

Important



Please place the Fitting Instructions in the glove box after installation is completed.

CANOPY HARNESS INSTALLATION

Mitsubishi Triton

KEY IDENTIFICATION CODE

CANOPY



<input type="text"/>	<input type="text"/>	<input type="text"/>	<input type="text"/>
----------------------	----------------------	----------------------	----------------------

Please write the key identification code in the boxes above,
and retain this copy with the vehicle service history.
Replacement keys can be purchased from your local dealer.