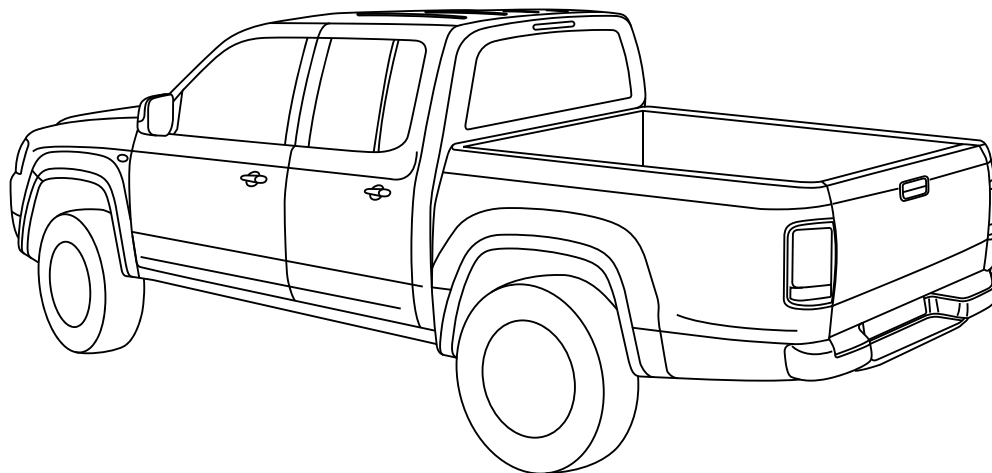


**VW AMAROK 2010-
Dust Defence Kit
With and Without Ute Liner
Installation Instructions**



Kit Number: 037039

Installation Time:
Approx. 30min Without Ute Liner Fitted
Approx. 1 hour With Ute Liner Fitted

Place these instructions in vehicle's glove box after installation is complete

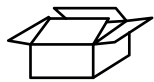
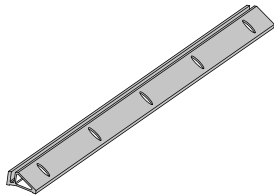
PLEASE REFER TO PAGE 2 OF THIS INSTRUCTION FOR A LIST OF PARTS AND QUANTITIES.

IMPORTANT!

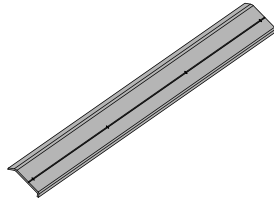
- Read instructions carefully before installation.
- It is strongly recommended that installation is conducted by an authorized dealer.
- This product must be installed exactly as specified in these instructions. Failure to do so may result in improper fit and/or retention.

RECOMMENDED TOOL LIST - (Not Supplied in Kit)

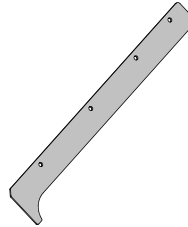
- Drill and Ø5.5mm Long Drill Bit (minimum 140mm)
- Sharp Scissors or Sharp Knife
- 8mm Spanner & Socket
- Masking Tape
- Rivet Gun
- Marking Pen
- Centre Punch
- Rubber Mallet
- Torque Wrench

PARTS CHECK SHEET**PARTS IN MAIN CARTON**

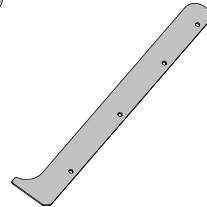
Base
Extrusion
Qty - 1



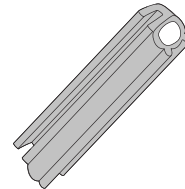
Cover Base
Extrusion
Qty - 1



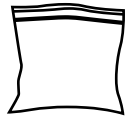
Tub Side
Plate LHS
Qty - 1



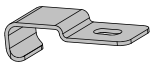
Tub Side
Plate RHS
Qty - 1



Pinch-weld
Bulb Seal
Qty - 1



Fitting Kit
Qty - 1

**PARTS IN FITTING KIT**

Retention Clip
Qty - 4



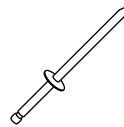
Self-tapping
Screw
Qty - 4



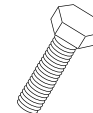
M5 Large
Washer
Qty - 8



M5 Small
Washer
Qty - 8



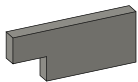
Rivet
Qty - 5



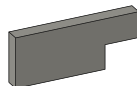
M5x30 Hex
Head Screw
Qty - 8



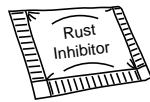
M5 Nylock
Nut
Qty - 8



Foam Pad RH
Qty - 1



Foam Pad LH
Qty - 1



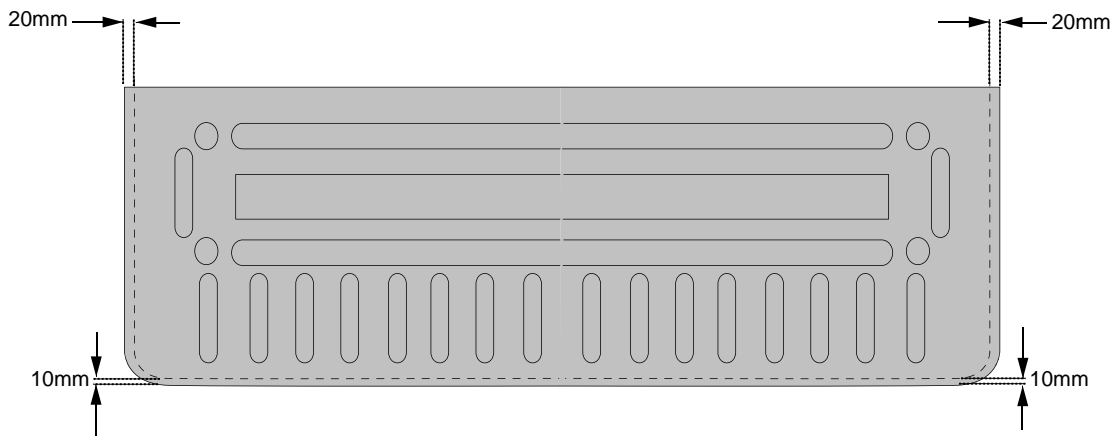
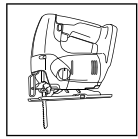
Rust
Inhibitor
Qty - 1



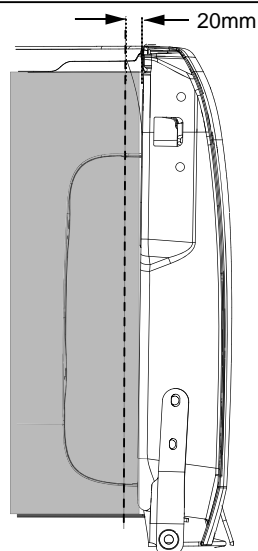
Automotive
Surface Cleaner
Qty - 1



Primer
Qty - 1

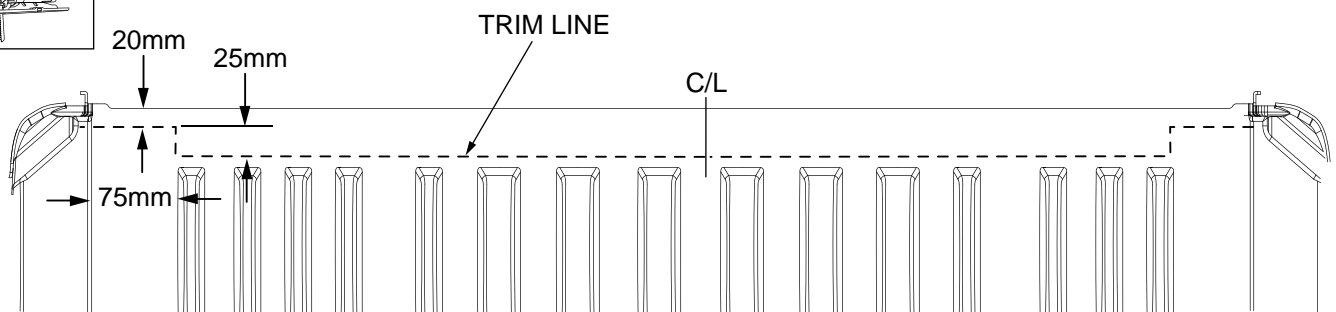
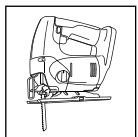
FOR VEHICLES WITH UTE LINER PLEASE COMPLETE STEPS A B C

Remove the ute liner from the tailgate. Mark the tailgate liner as shown using white pen.
FIG. A Trim the tailgate liner using jigsaw.

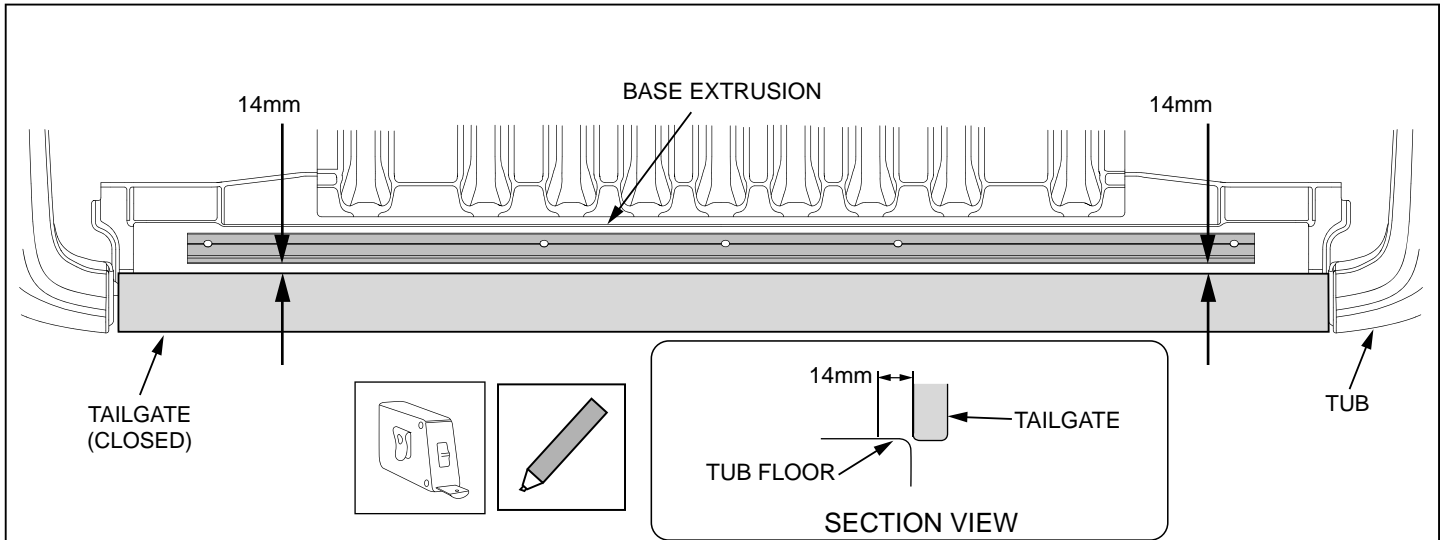


RHS VIEW INSIDE TUB

Mark the tubliner 20mm inwards from the edge as shown using white pen. Remove the tubliner.
FIG. B Trim the tailgate liner using jigsaw.

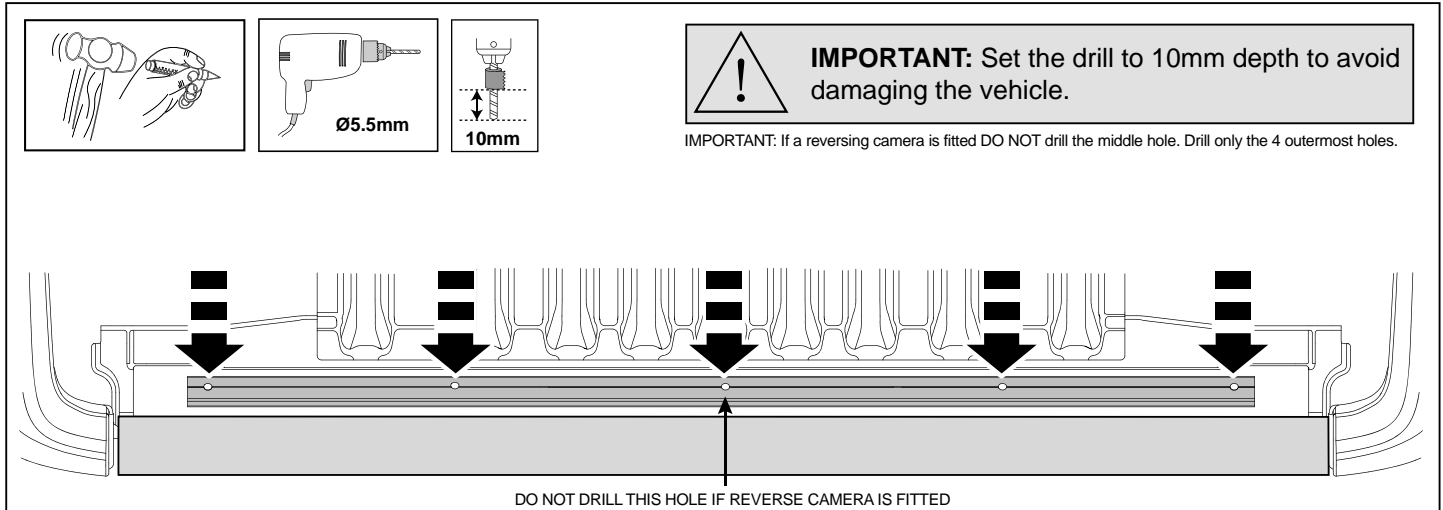


Mark the tubliner as shown using white pen. Trim the tailgate liner using jigsaw.
FIG. C



With the tailgate closed, measure and mark 14mm from the inside edge of the tailgate at 2 or 3 points. Carefully align the base extrusion with the 14mm marks and **centre it between the side plates**. Before drilling carefully close the tailgate and double check that the base extrusion is parallel with the tailgate i.e. there is an even gap between the base extrusion and the tailgate. If in doubt, carefully fit the pinchweld seal temporarily and check the operation of the tailgate is not hindered by the seal.

FIG. 1



Using the pre-drilled holes in the base extrusion as a guide, centrepunch and drill 5 holes through the centres of the slots in the base extrusion and tub with 5.5mm drill set to 10mm depth. Apply rust inhibitor.

FIG. 2

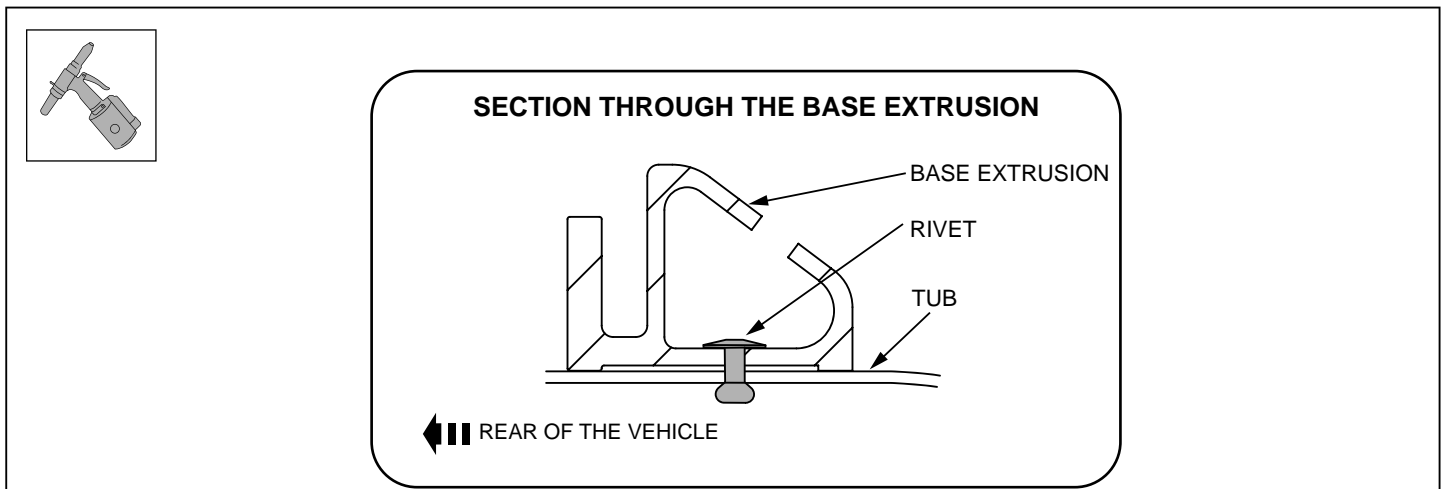


FIG. 3

Secure the extrusion to the tub using 5 rivets. NOTE: Only 4 rivets in the 4 outermost positions are required if the vehicle is fitted with reversing camera

VIEW INSIDE THE TUB RHS

RHS SIDE PLATE

NOTE: ENSURE DRILL STOP IS USED. APPLY MASKING TAPE TO THE TUB EDGE TO PROTECT

Ø5.5mm (min. 140mm long)

10mm

TOP VIEW

FLUSH

SIDE PLATE EXTRUSION

FIG. 4 Trial fit tub side plates to the inside of the tub as shown. The side plate should be placed on the tub floor and hard against the side of the tub. Mark and centre punch the centre points of four (4) hole positions on each side. Remove the plates and drill with a long $\varnothing 5.5\text{mm}$ drill bit (min. 140mm long) all holes centre marked locations. Apply rust inhibitor to all drilled holes. RHS shown, repeat for LHS.

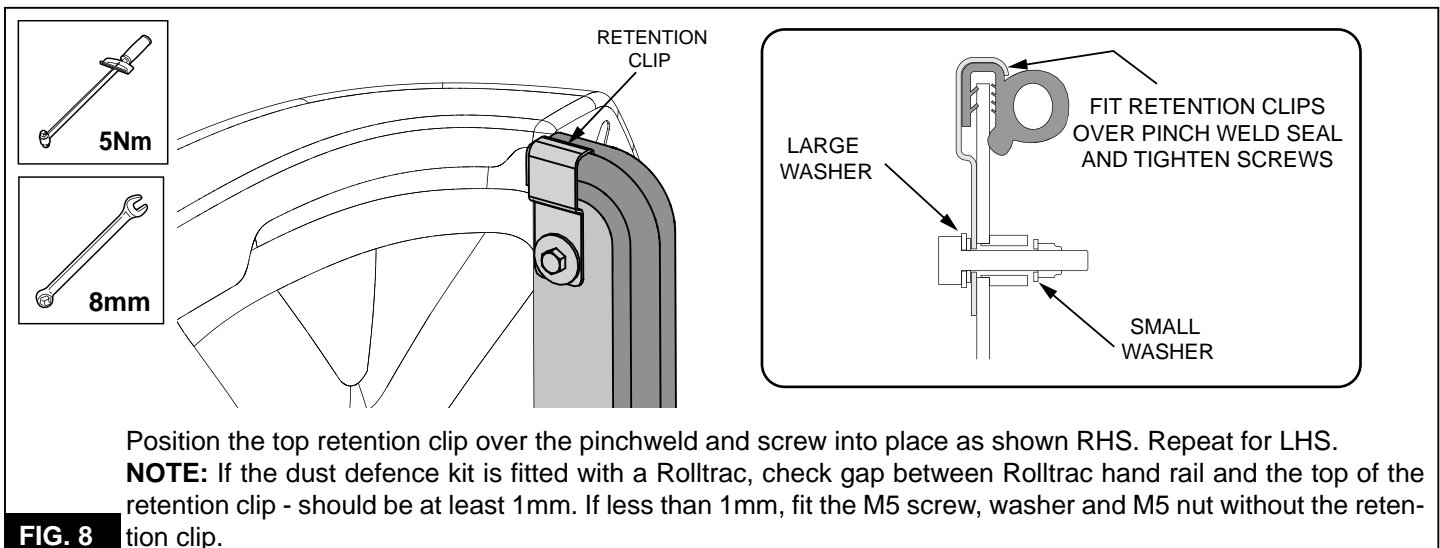
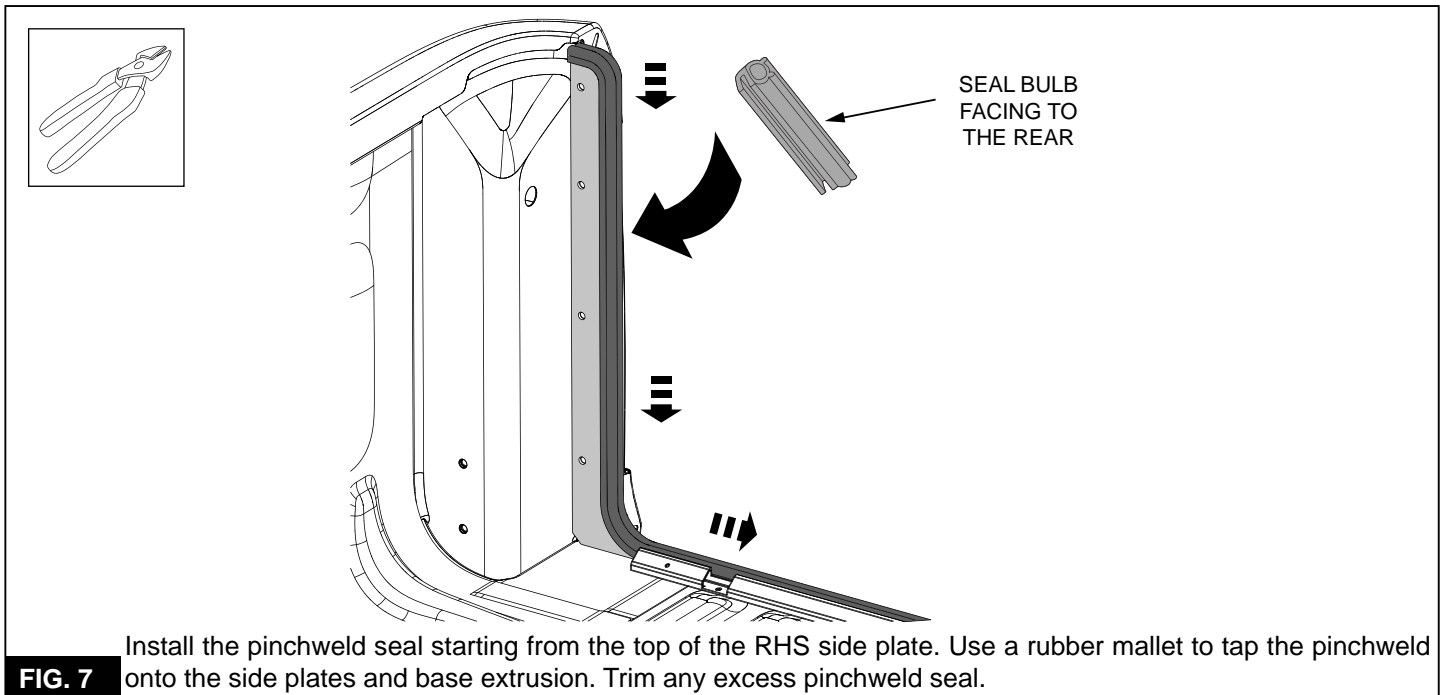
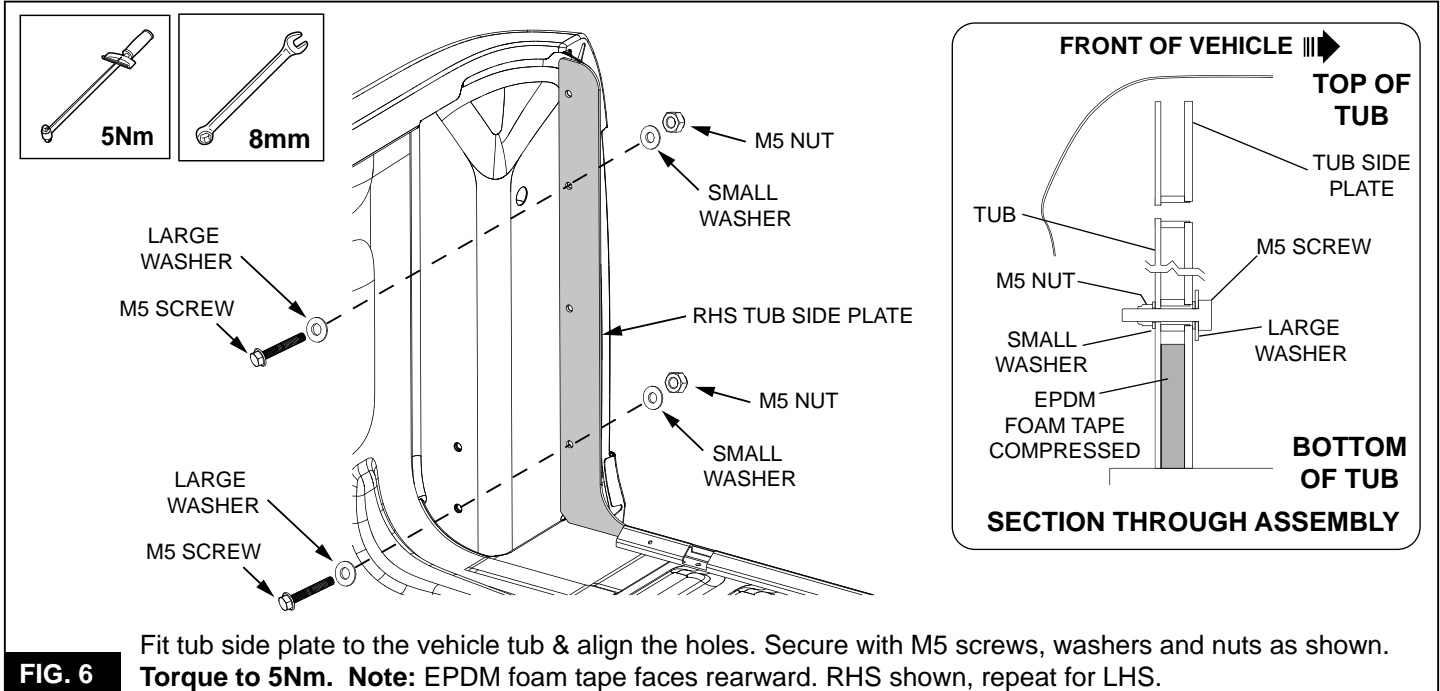
TOP VIEW

SIDE PLATE

EXTRUSION

FOAM PAD

FIG. 5 Clean the surface where the foam pad will go using the alcohol wipe, then apply primer. The foam pad should be applied flush between the extrusion and the tub flange. **Note: The side plates sit on top of the foam pads.**





8mm



5Nm

FIT RETENTION CLIPS
OVER PINCH WELD SEAL
AND TIGHTEN SCREWS

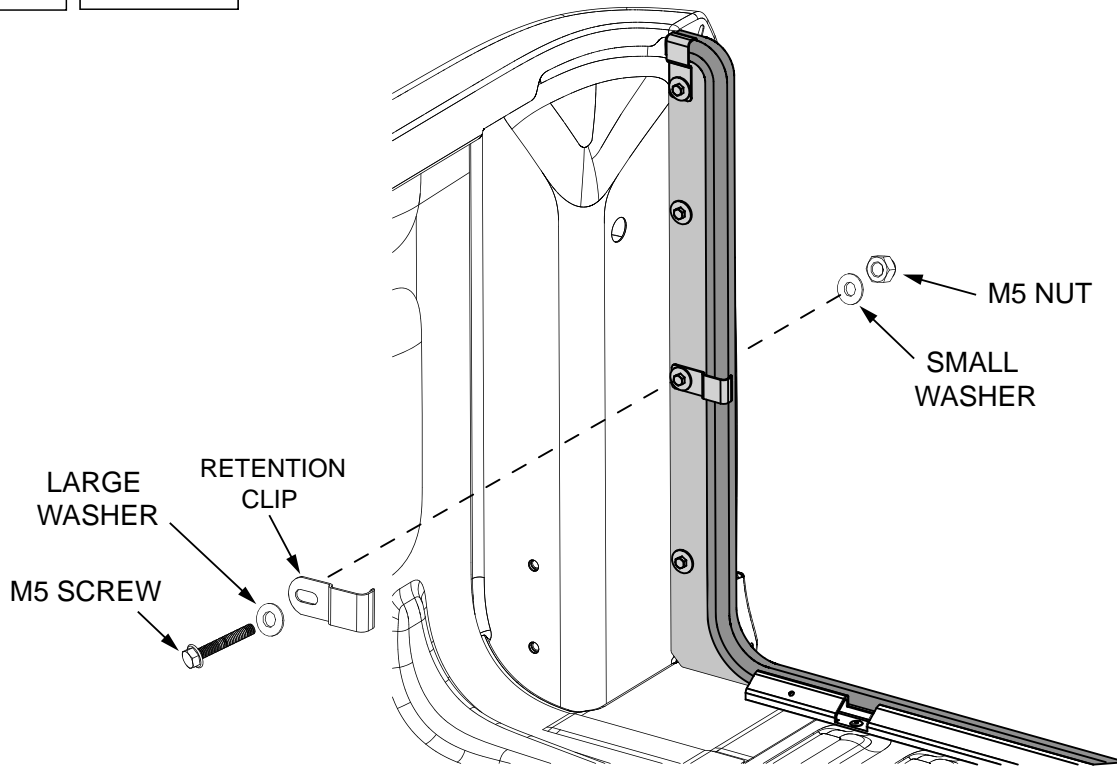
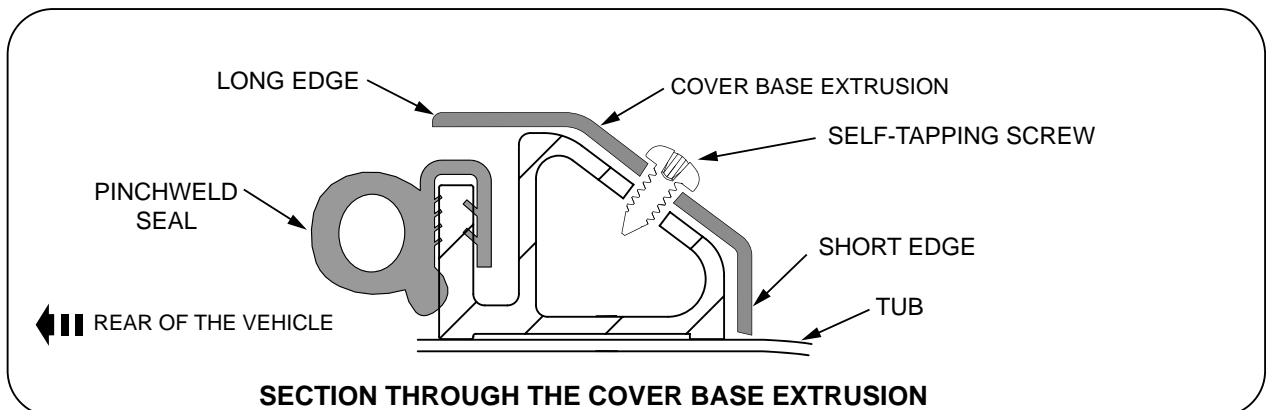
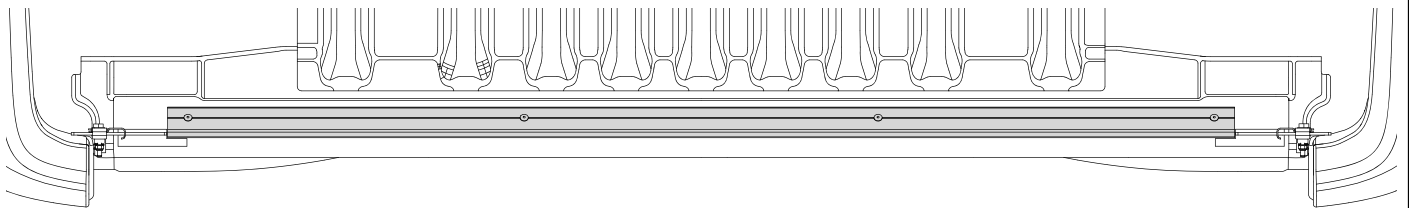


FIG. 9 Position the retention clips over the pinchweld and screw into place as shown RHS. Repeat for LHS.

TUB TOP VIEW



SECTION THROUGH THE COVER BASE EXTRUSION

With the longer edge to the top, fit the base extrusion cover over the pinchweld seal and align the cover with the pre-drilled holes in the base extrusion. Fit the cover into place using the four self-tapping screws. Reinstall the tubliner.

FIG. 10