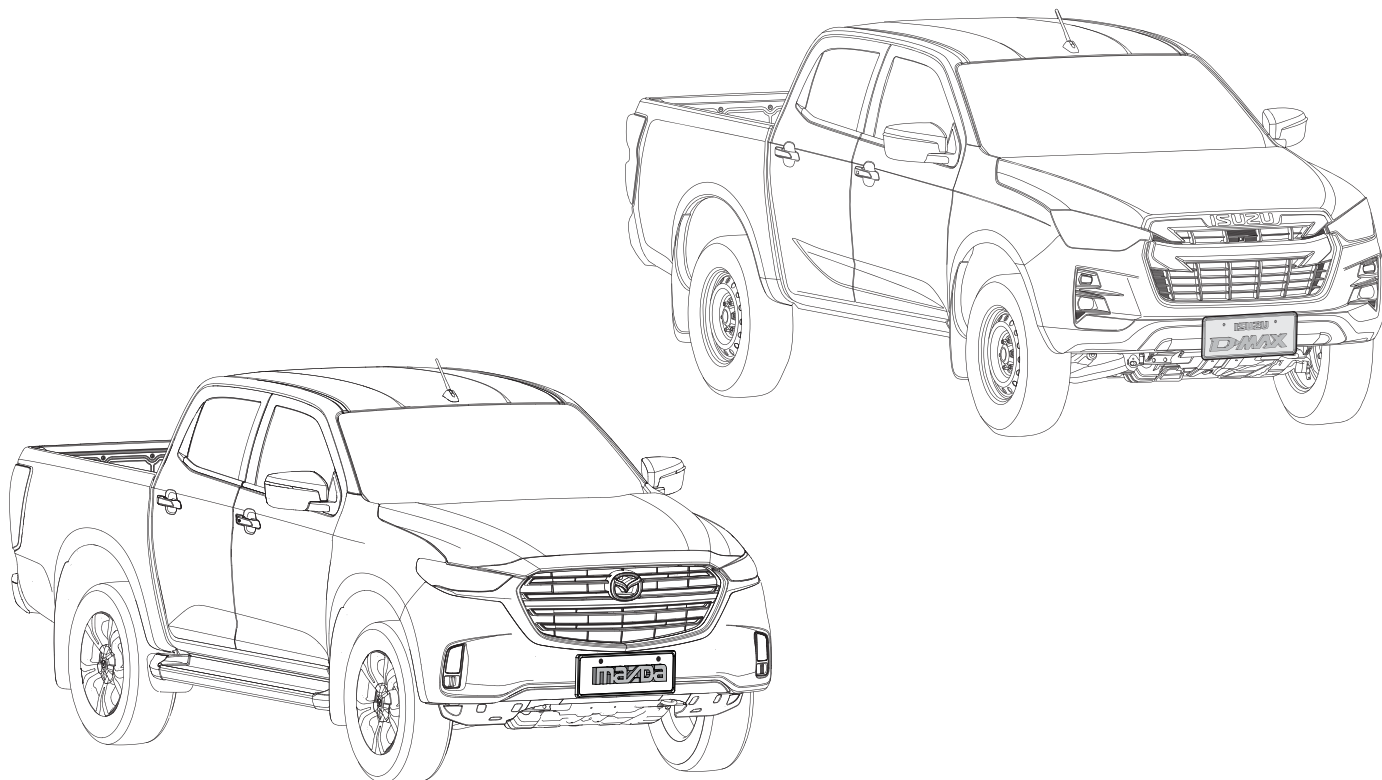


**ISUZU DMAX & MAZDA BT50 2020-
Dust Defence Kit
With and Without Ute Liner
Installation Instructions**



Kit Number: 038012

Installation Time:
Approx. 30min Without Ute Liner Fitted

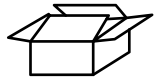
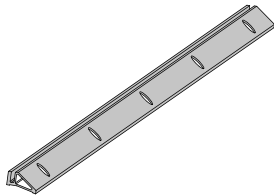
PLEASE REFER TO PAGE 2 OF THIS INSTRUCTION FOR A LIST OF PARTS AND QUANTITIES.

IMPORTANT!

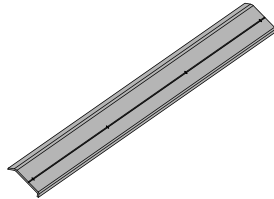
- Read instructions carefully before installation.
- It is strongly recommended that installation is conducted by an authorized dealer.
- This product must be installed exactly as specified in these instructions. Failure to do so may result in improper fit and/or retention.

RECOMMENDED TOOL LIST - (Not Supplied in Kit)

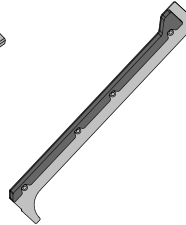
- Drill and Ø5.5mm Drill Bit
- Side Cutters
- 8mm Spanner & Socket
- Masking Tape
- Rivet Gun
- Marking Pen
- Centre Punch
- Rubber Mallet
- Torque Wrench
- Drill Stop
- Jigsaw
- Tape Measure

PARTS CHECK SHEET**PARTS IN MAIN CARTON**

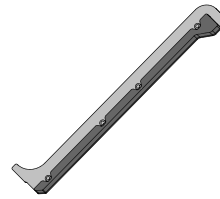
Base
Extrusion
Qty - 1



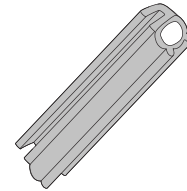
Cover Base
Extrusion
Qty - 1



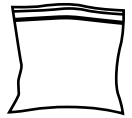
Tub Side
Plate LHS
Qty - 1



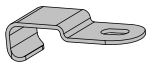
Tub Side
Plate RHS
Qty - 1



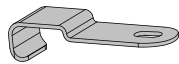
Pinch-weld
Bulb Seal
Qty - 1



Fitting Kit
Qty - 1

**PARTS IN FITTING KIT**

Retention Clip
Short
Qty - 2



Retention Clip
Long
Qty - 2



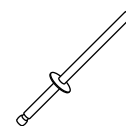
Self-tapping
Screw
Qty - 4



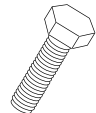
M5 Large
Washer
Qty - 8



M5 Small
Washer
Qty - 8



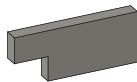
Rivet
Qty - 5



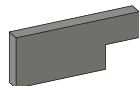
M5x30 Hex
Head Screw
Qty - 8



M5 Nylock
Nut
Qty - 8



Foam Pad RH
Qty - 1



Foam Pad LH
Qty - 1



Rust
Inhibitor
Qty - 1

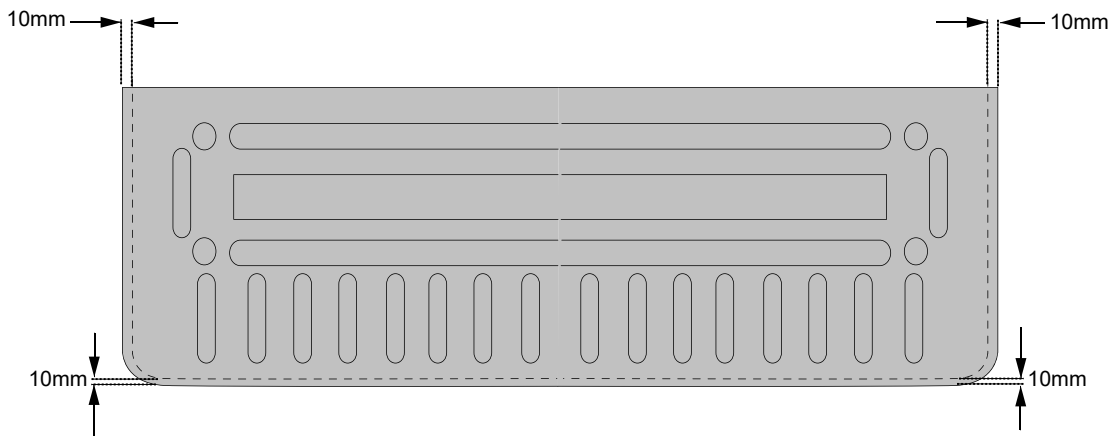
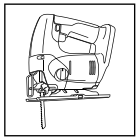


Automotive
Surface Cleaner
Qty - 1



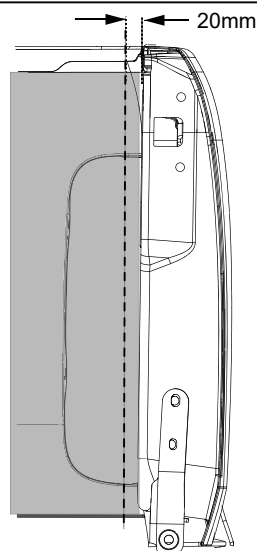
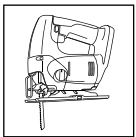
Primer
Qty - 1

FOR VEHICLES WITH UTE LINER PLEASE COMPLETE STEPS A B C



Remove the ute liner from the tailgate. Mark the tailgate liner as shown using white pen. Trim the tailgate liner using jigsaw.

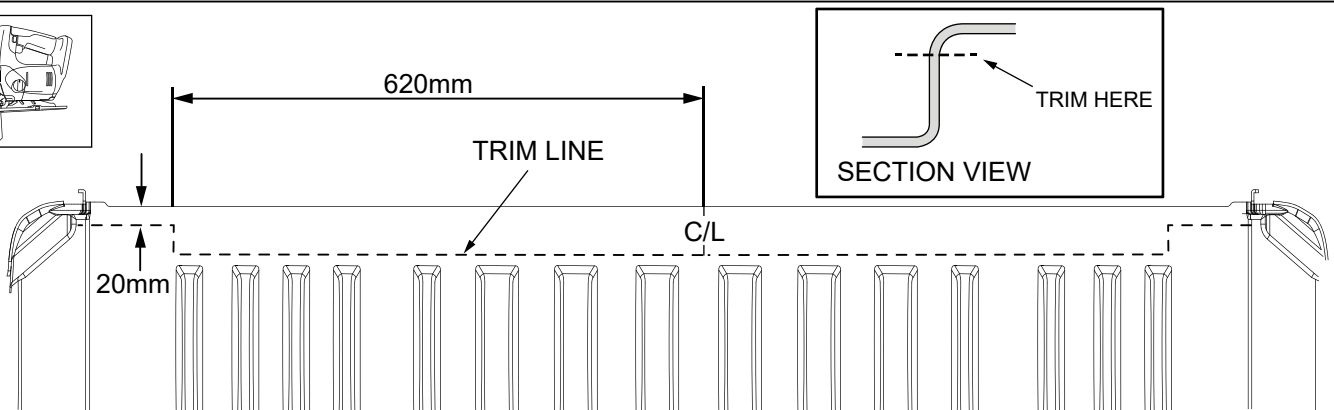
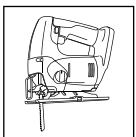
FIG. A



RHS VIEW INSIDE TUB

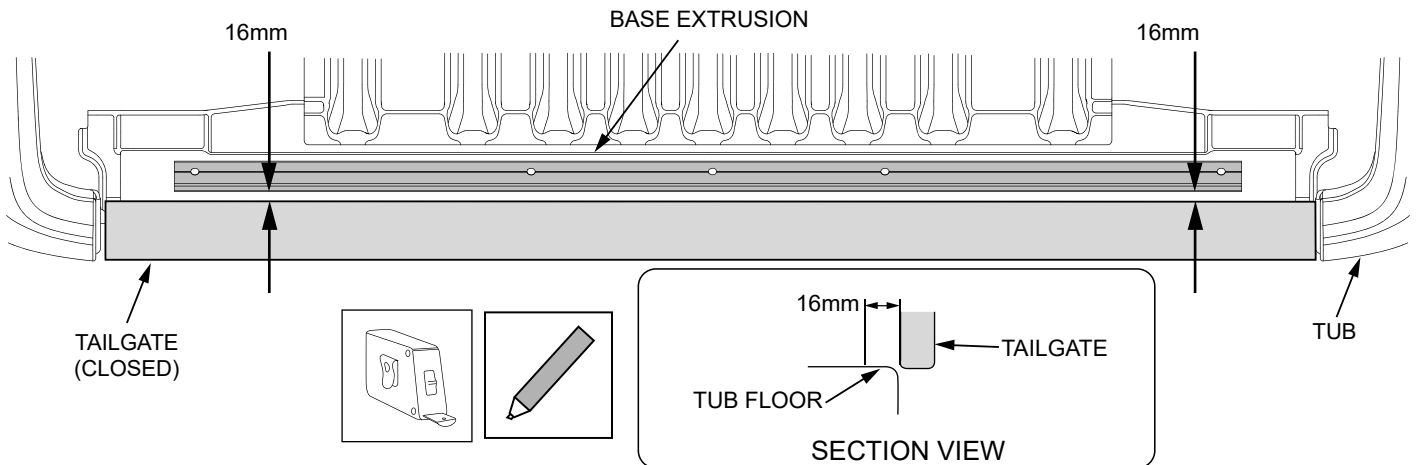
FIG. B

Mark the tubliner 20mm inwards from the edge of tub as shown using white pen.



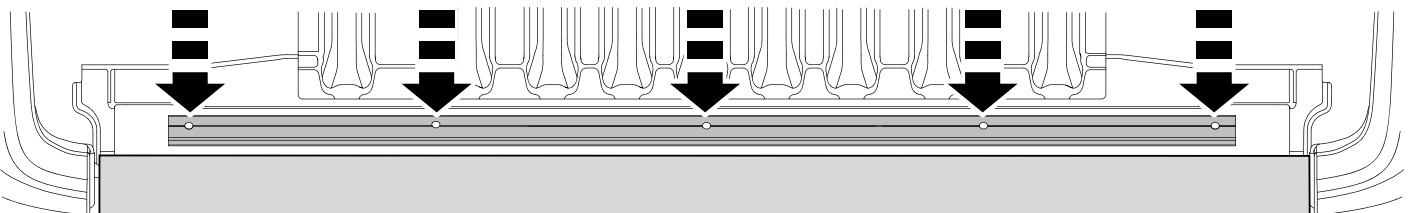
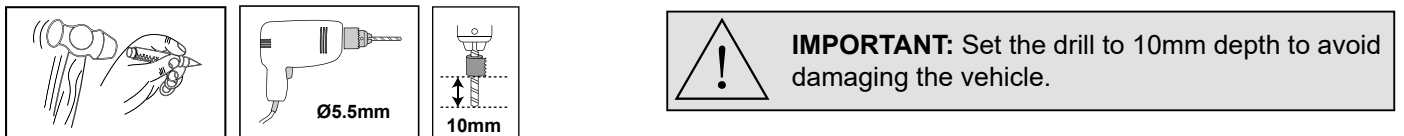
Mark the tubliner as shown using white pen. Remove the tubliner. Trim the tubliner using jigsaw. Hint: Place and centre the base extrusion over the liner to mark trim position.

FIG. C



With the tailgate closed, measure and mark 16mm from the inside edge of the tailgate at 2 or 3 points. Carefully align the base extrusion with the 16mm marks and **centre it between the side plates**. Before drilling carefully close the tailgate and double check that the base extrusion is parallel with the tailgate i.e. there is an even gap between the base extrusion and the tailgate. If in doubt, carefully fit the pinchweld seal temporarily and check the operation of the tailgate is not hindered by the seal.

FIG. 1



Using the pre-drilled holes in the base extrusion as a guide, centrepunch and drill 5 holes through the centres of the slots in the base extrusion and tub with 5.5mm drill set to 10mm depth. Apply rust inhibitor.

FIG. 2

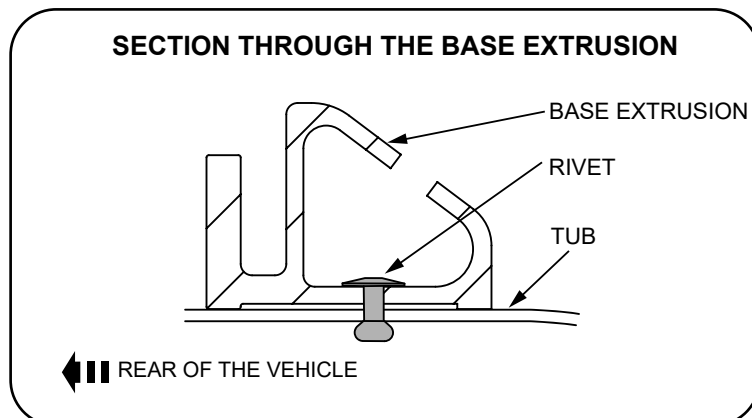
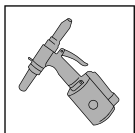
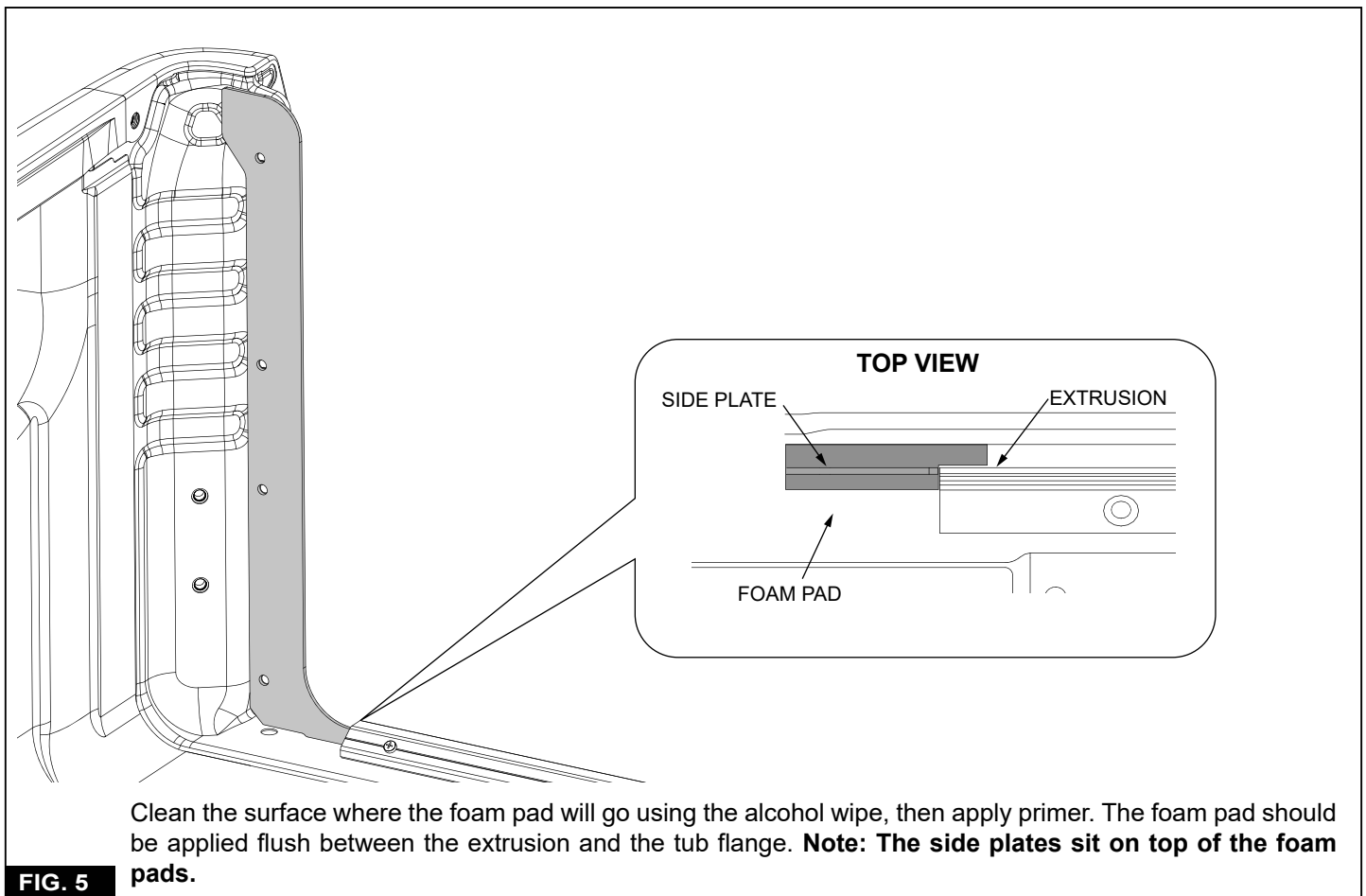
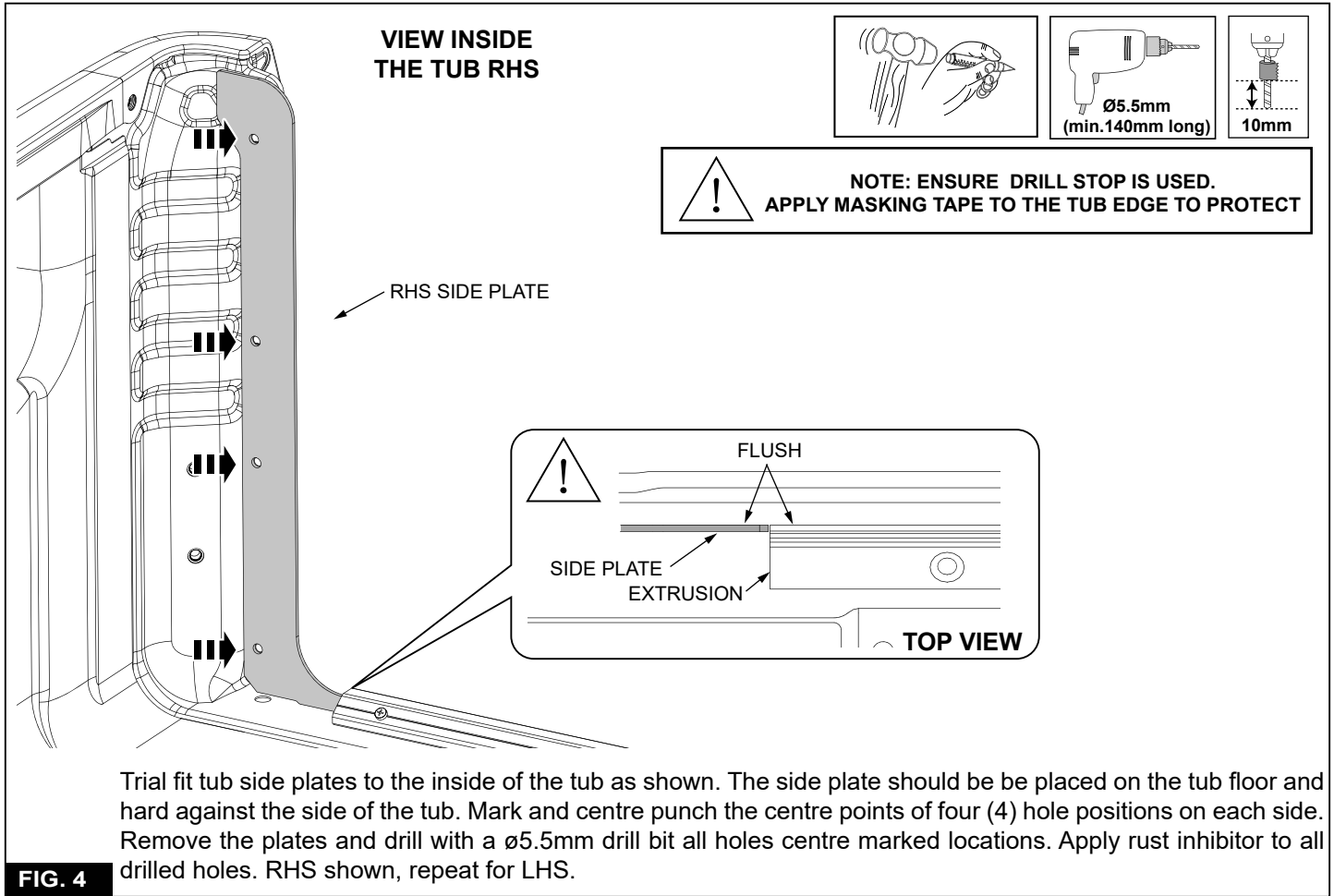
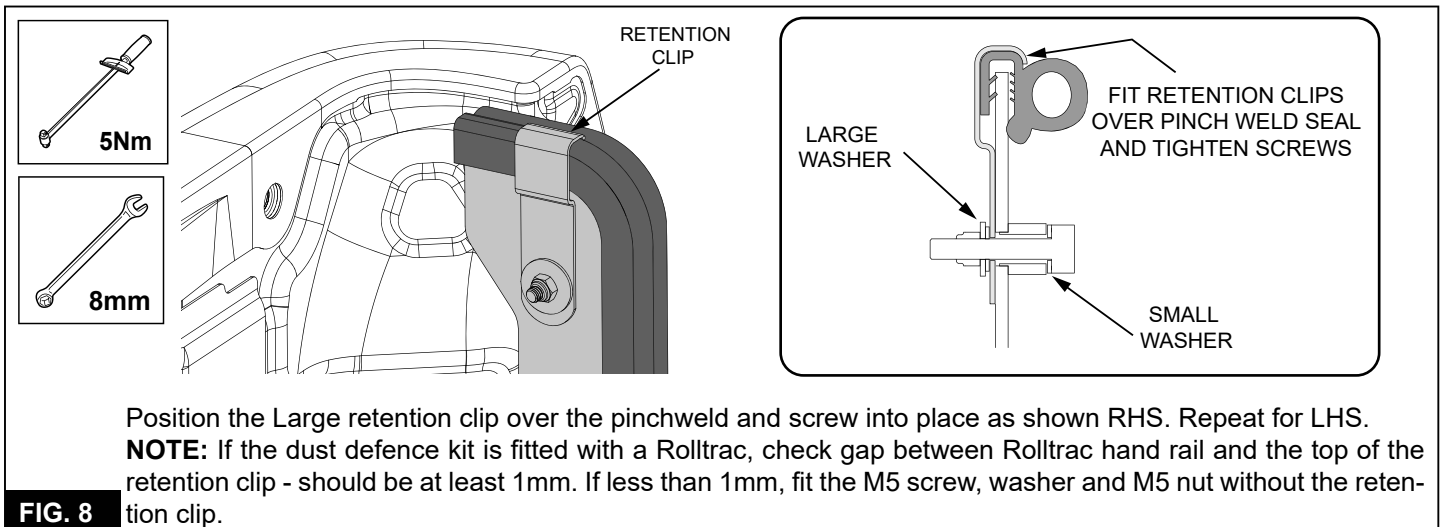
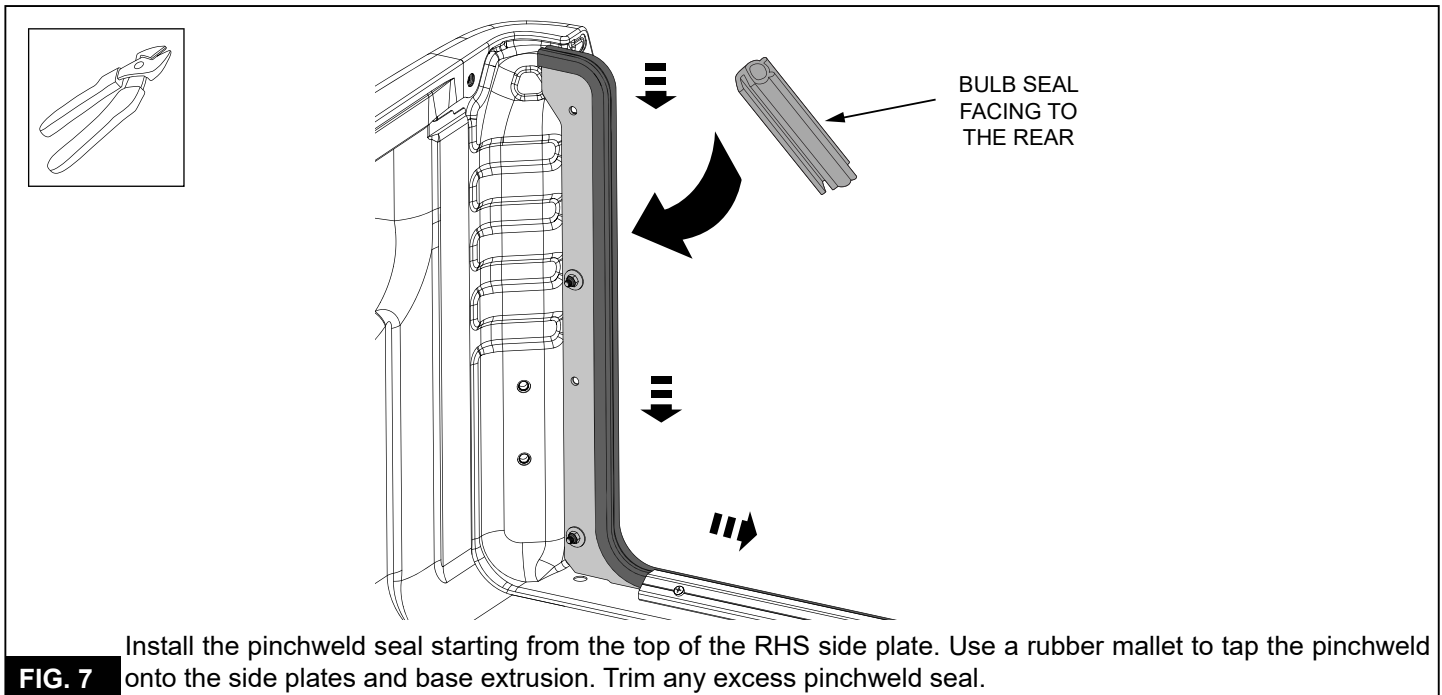
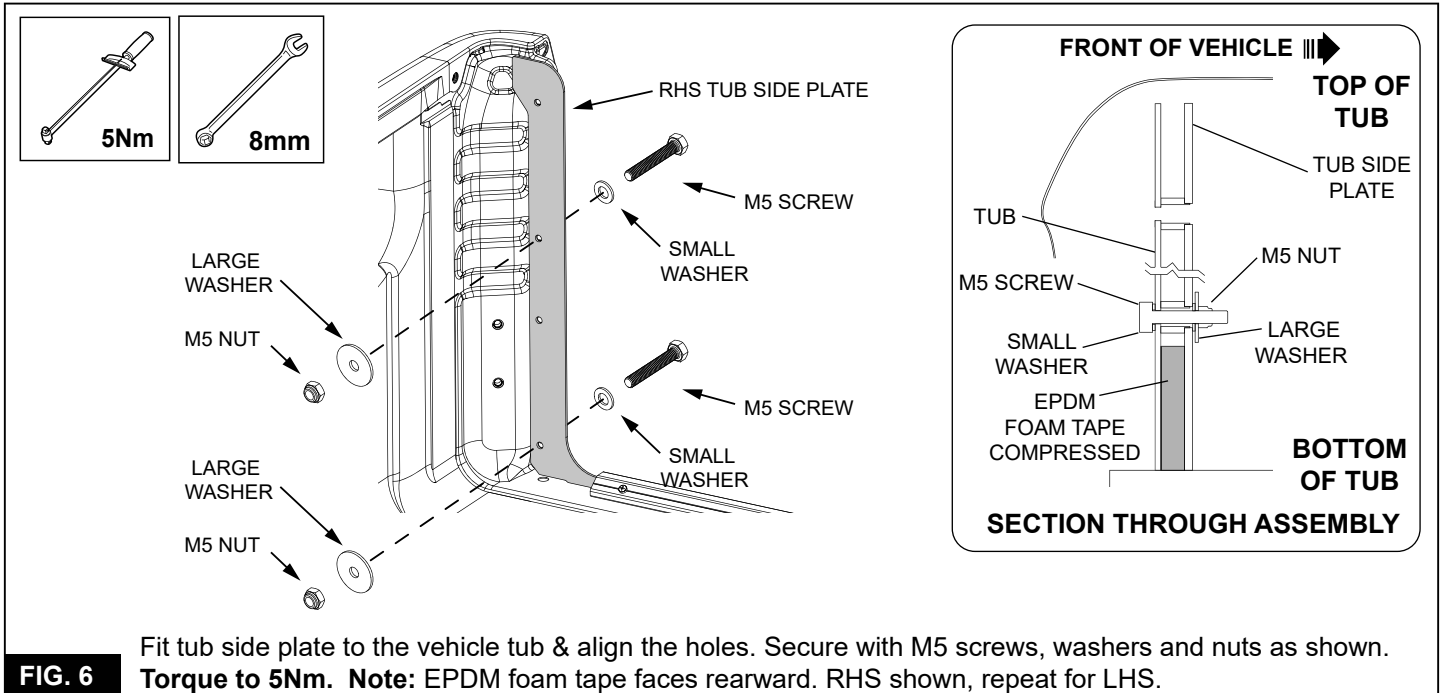
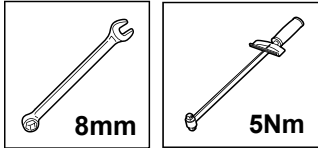


FIG. 3

Secure the extrusion to the tub using 5 rivets.







FIT RETENTION CLIPS
OVER PINCH WELD SEAL
AND TIGHTEN SCREWS

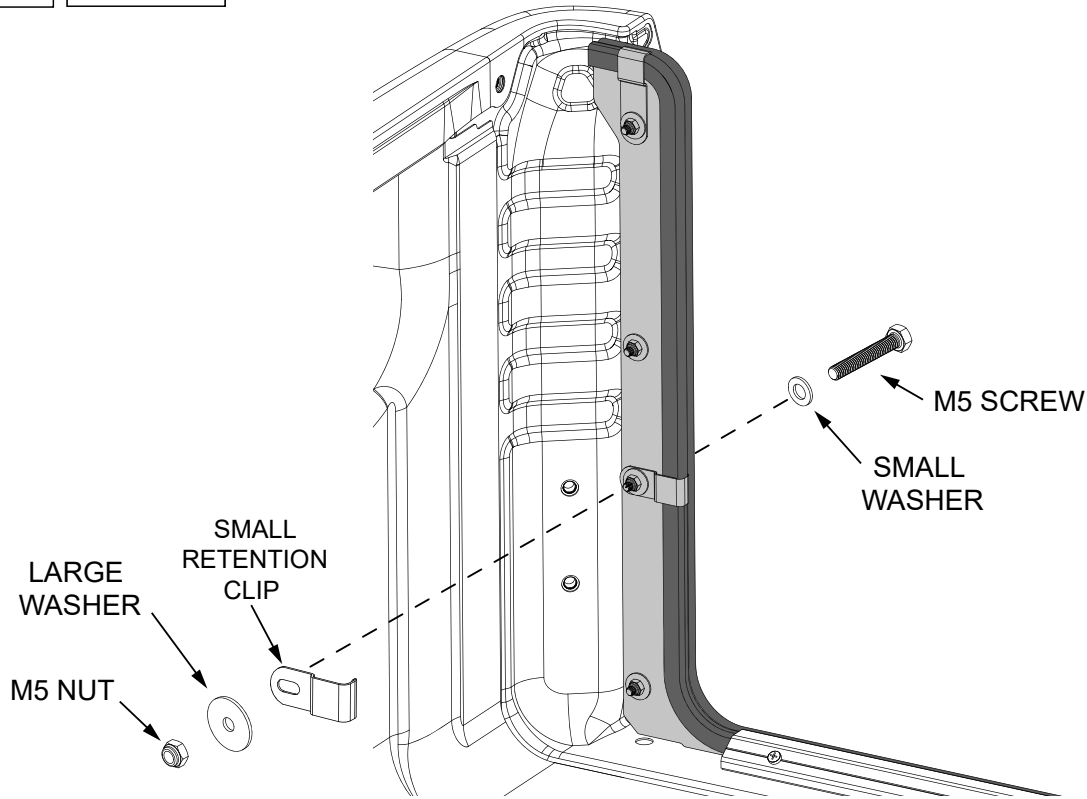
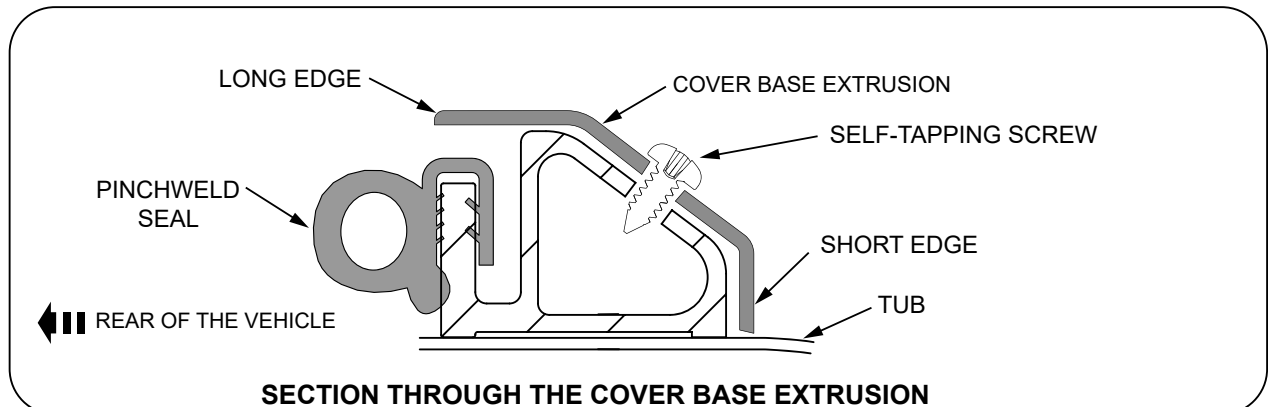
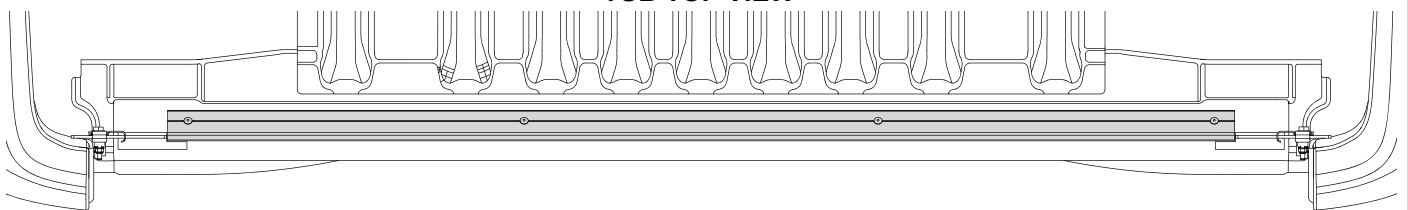


FIG. 9 Position the retention clips over the pinchweld and screw into place as shown RHS. Repeat for LHS.

TUB TOP VIEW



SECTION THROUGH THE COVER BASE EXTRUSION

With the longer edge to the top, fit the base extrusion cover over the pinchweld seal and align the cover with the pre-drilled holes in the base extrusion. Fit the cover into place using the four self-tapping screws. Reinstall the tubliner.

FIG. 10