

Care Instructions:



Clean Fender Flares with a mild detergent and water solution.



Do not use abrasive cleaners or solvents.

PLACE THESE INSTRUCTIONS IN VEHICLE'S GLOVE BOX AFTER INSTALLATION IS COMPLETE.

IMPORTANT

Read instructions carefully before installation.
It is strongly recommended that installation is conducted by a Toyota Dealer, using a vehicle hoist.
This product must be installed exactly as specified in these instructions.
Failure to do so may result in improper fit and/or retention.

COMPONENTS LIST

1.	2.	3.	4.	NO.	COMPONENT	QTY
				1	Right Hand Front Flare (RHF)	1
				2	Left Hand Front Flare (LHF)	1
				3	Mounting Bracket	4
				4	Trim Extrusion	1
				5	M5x10mm Hex Head Bolt	4
				6	M5 Flat Washer	4
				7	M5 Fibre Washer	4
				8	Alcohol Wipe	2

TOOLS & EQUIPMENT REQUIRED

- Stubby Phillips Head Screwdriver
- Flat Tip Screwdriver
- Sockets & Socket Driver
- Scissors

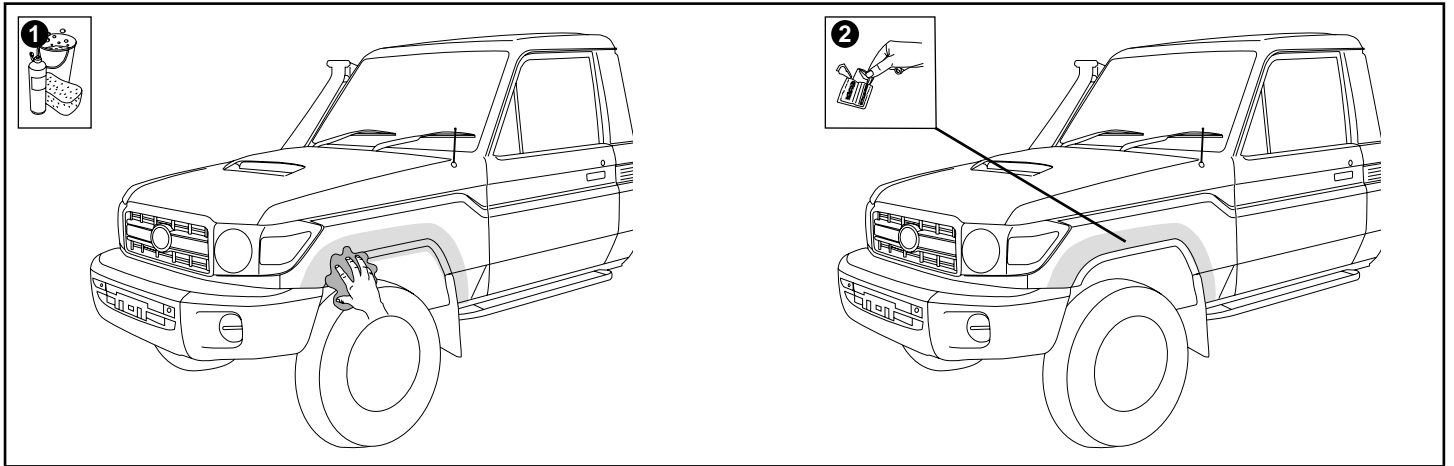


Diagram #1

1. Thoroughly clean & dry the installation areas on both sides of the vehicle. Clean the shaded area using the alcohol wipes provided & wipe away any residue with a dry clean cloth on both sides of the vehicle. See Dia #1.

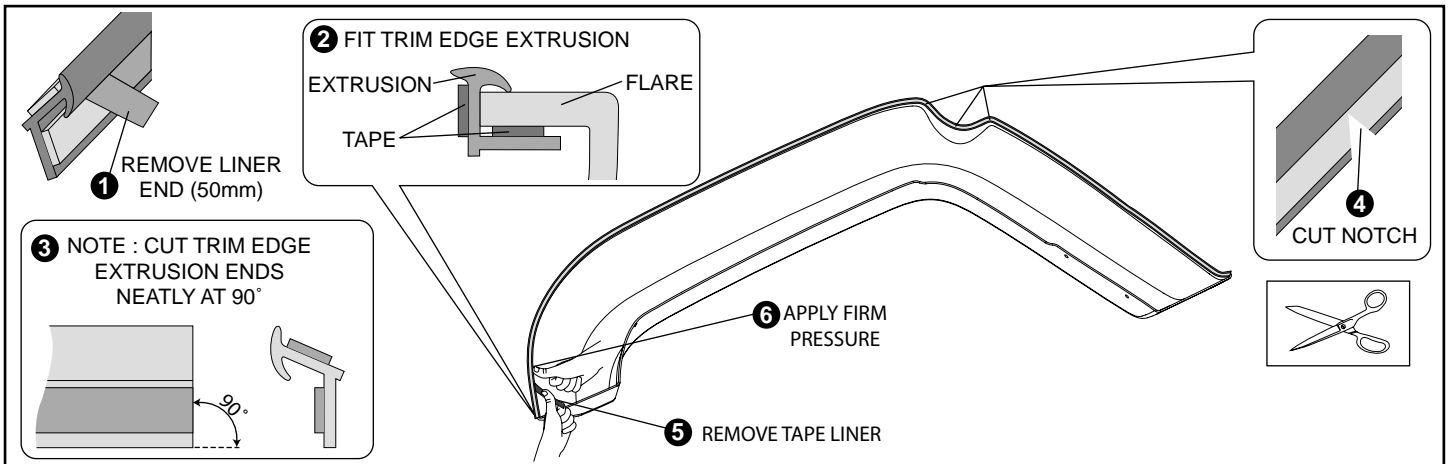


Diagram #2

2. Remove approximately 50mm of the internal protective liner from the trim edge extrusion as shown, and fit to the LH front flare. Cut trim edge extrusion to length for a neat fit. To assist placement of extrusion around corners, notch the extrusion using scissors as shown. Pulling at right angles to the extrusion, remove the liner from the extrusion in small portions and apply thumb pressure to ensure that it adheres to the flare as the extrusion is installed. **Note: Take care in cutting the ends of the trim edge extrusion to 90°, as this will effect the final appearance on the vehicle. See Dia #2.** Repeat process for RH front flare.

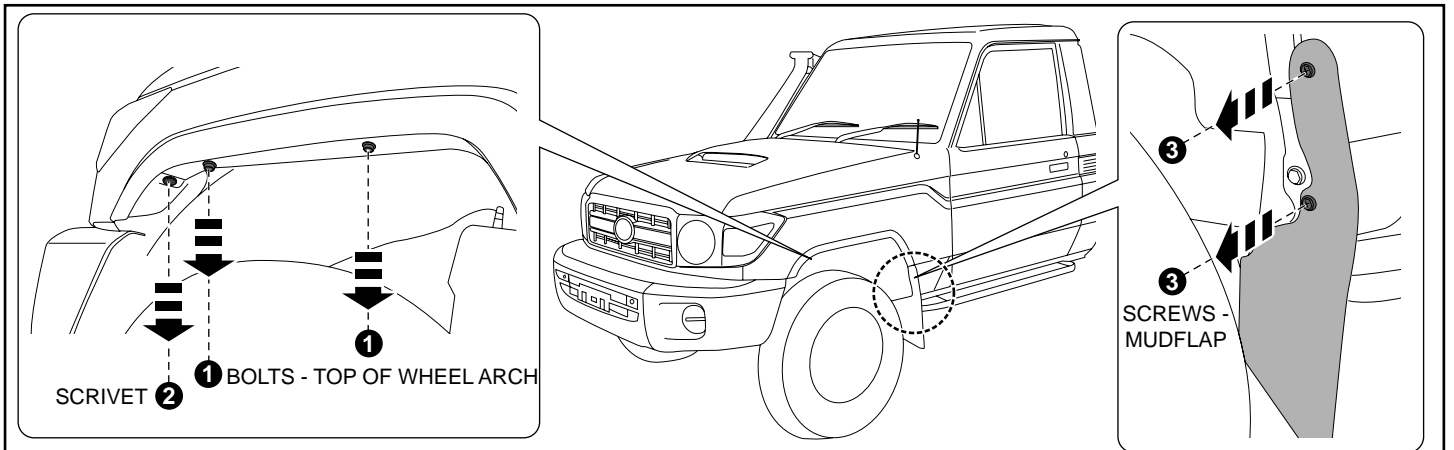


Diagram #3

3. Remove and retain the two (2) bolts from the top of the wheel arch as shown. Remove and retain one (1) scrivet from the front corner of the wheel arch as shown. Remove and retain the top two (2) screws from the mud flap as shown. Repeat process for the other side of the vehicle. See Dia #3.

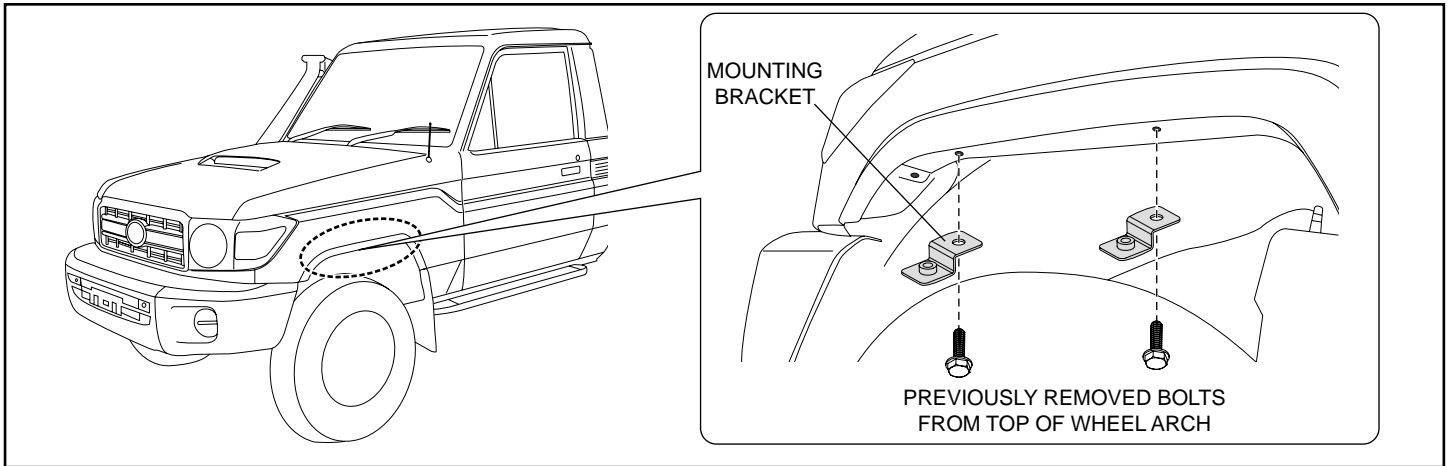


Diagram #4

4. Install mounting bracket to the top of the front wheel arch and secure with the two (2) bolts previously removed from the top of the wheel arch as shown. **Tighten to TORQUE 5Nm. See Dia #4.** Repeat for the other side of the vehicle.

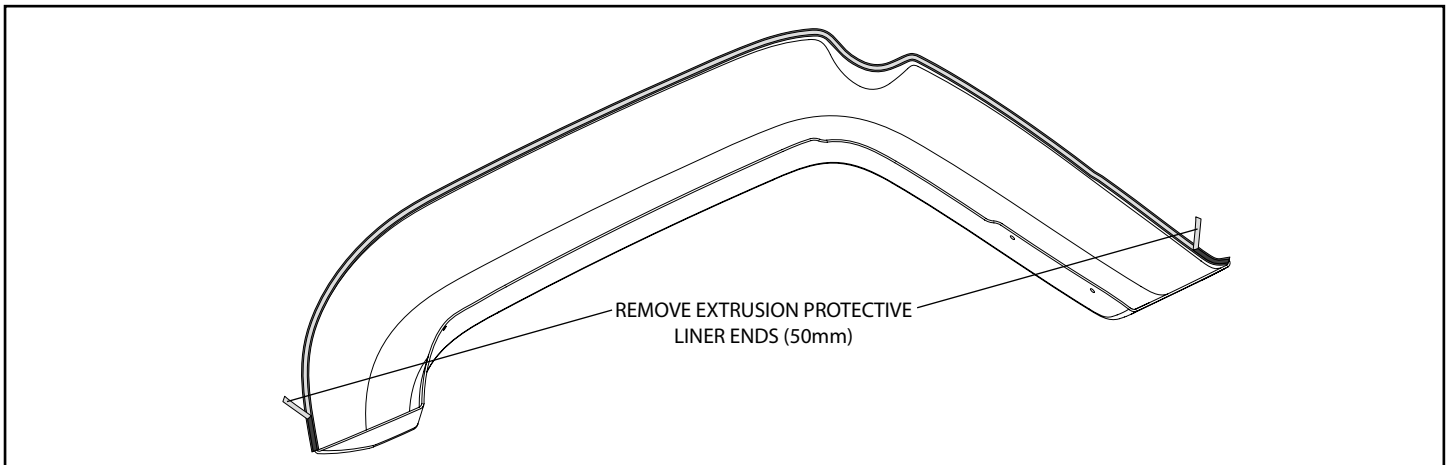


Diagram #5

5. Peel 50mm from each end of the protective liner from the trim edge extrusion as shown. Ensure these tape liners are accessible when flare is fitted to the vehicle. Use masking tape to hold if required. **See Dia #5.**

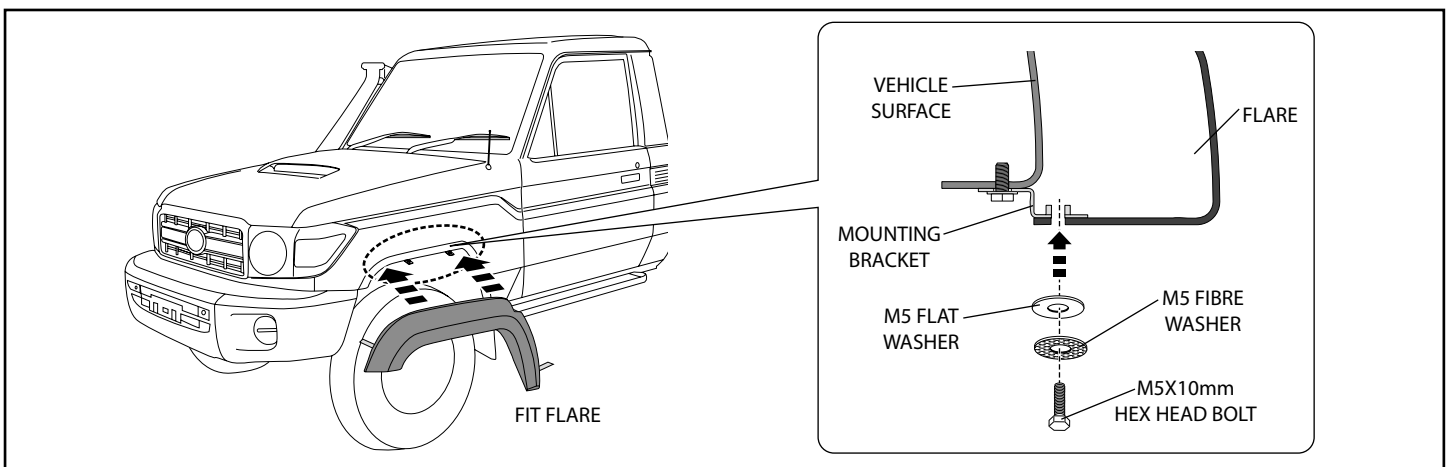


Diagram #6

6. Fit flare to the vehicle ensuring tape liners are accessible, and secure to the mounting brackets as shown using two (2) M5x10mm hex head screws, M5 flat washers and M5 fibre washers. **Tighten to TORQUE 5Nm. See Dia #6.**

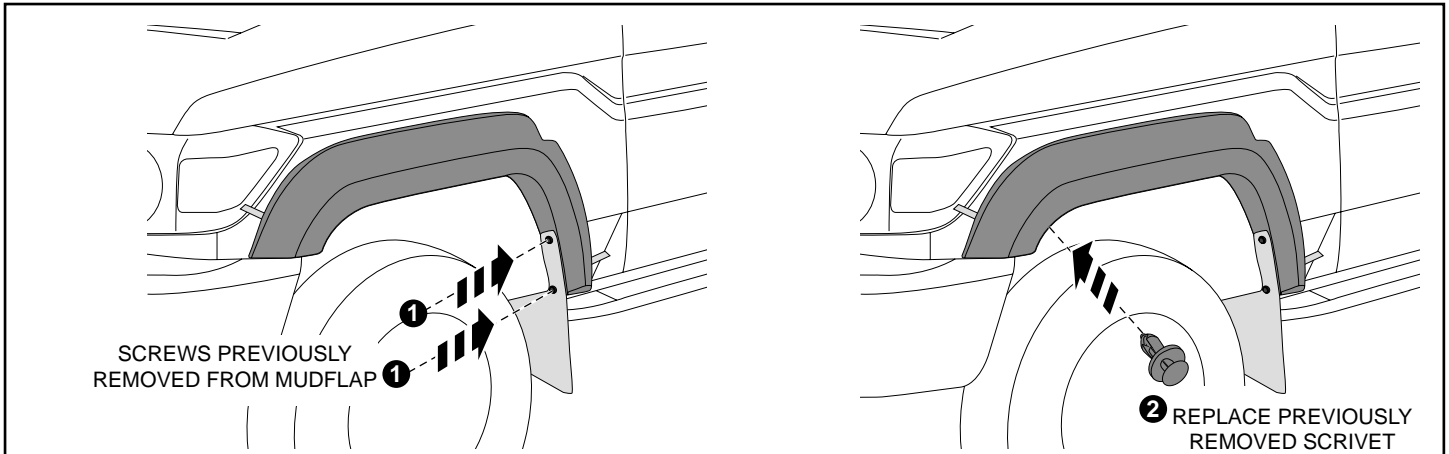


Diagram #7

7. Re-attach the mud flap on top of the flare as shown using the two (2) previously removed screws. Replace previously removed scrivet to flare at the front corner of the wheel arch as shown. **See Dia #7.**

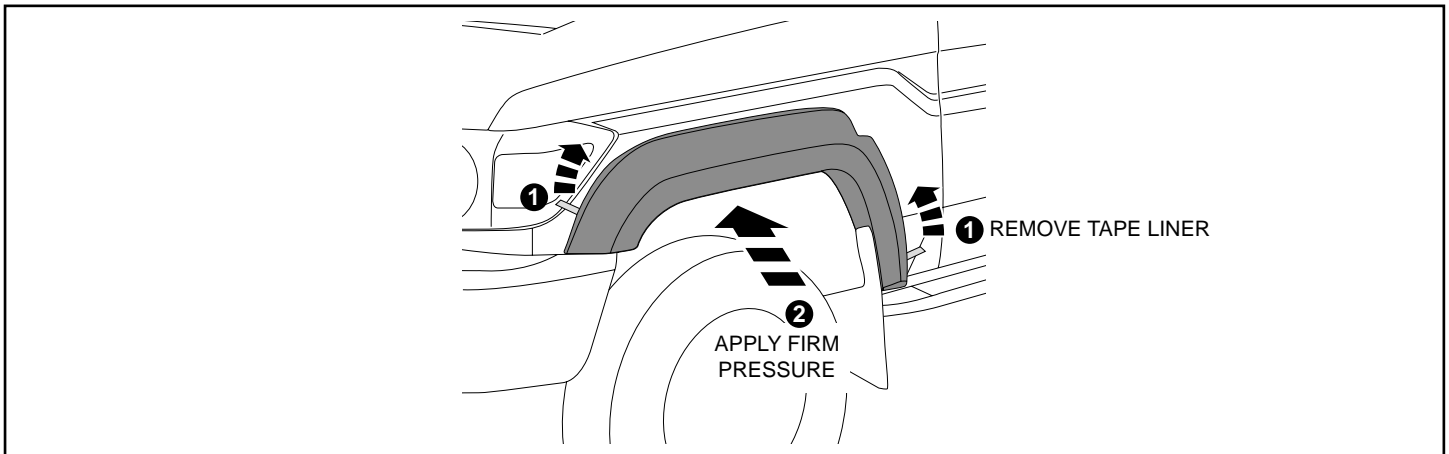


Diagram #8

8. Remove tape liner and apply firm pressure along taped area to ensure maximum adhesion. **See Dia #8.**