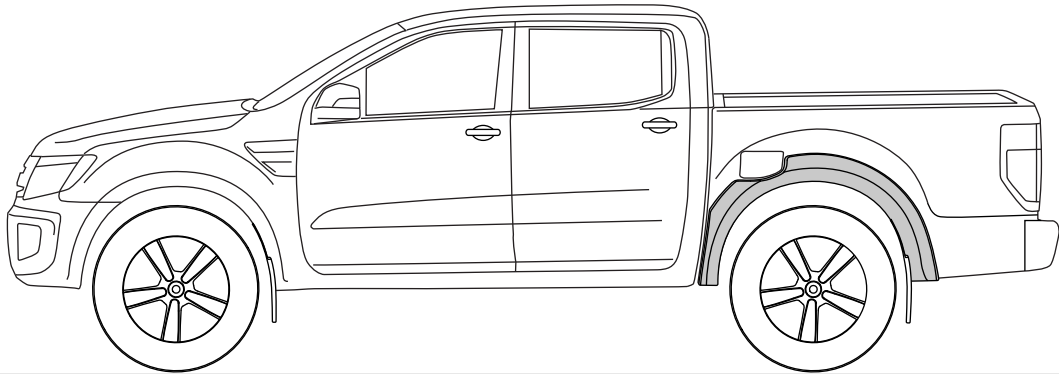


# REAR FENDER FLARES INSTALLATION INSTRUCTIONS

FF708g  
1/4

## FORD PX RANGER 2011-



### NOTES:

- Ensure that both left and right hand Fender Flares suit the profile of the vehicle. Note the areas where the Fender Flares come in contact with the vehicle.
- Before fitting Fender Flares remove any mouldings, strips or existing flares from the wheel arch. If there is a body side moulding, mark where the moulding is to be cut, alternatively the Fender Flares can be cut to go around the moulding. Be sure to allow enough room for the extrusion.
- Read instructions carefully. This product must be installed exactly as specified in these instructions. Failure to do so may result in improper fit and/or retention.

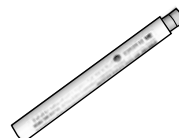
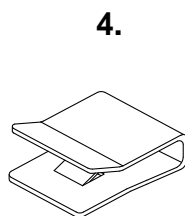
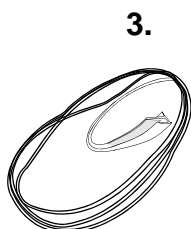
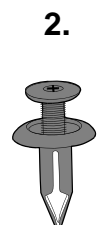
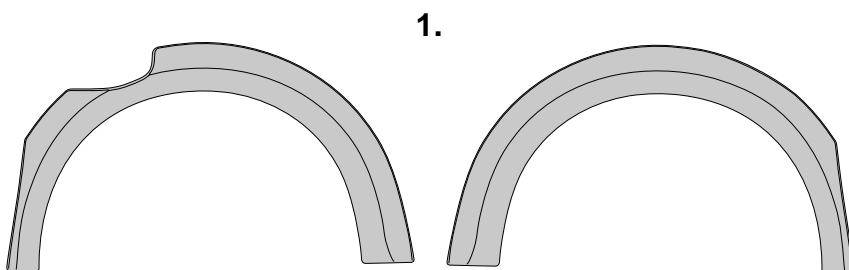
### PAINTING INSTRUCTIONS:

**⚠ Warning: Do not fit trim edge extrusion or any of the hardware until paint is completely dry.**

- Spot Sand Fender Flares where required prior to painting, recommend 500 grit using an orbital type sander.
- Prior to painting, clean all surfaces to be painted using clean water and a mild detergent, do not use lacquer thinner or any solvent based products. Wipe completely dry.
- Best results will be achieved by wiping the areas to be painted with a tack rag just prior to painting.
- Select a top coat and clear paint that is suitable for ABS (Acrylonitrile-Butadiene-Styrene).
- Automotive paint systems, such as Acrylics or Two Packs, can be applied directly to the components. However, some paints may require a primer. If recommendations on paint specifications are not followed, cracking of the part or degradation to the material may result. In all paint systems, aromatic hydrocarbons and alkalis are best avoided to reduce damage to the material properties.
- If using a paint system which requires baking, do not expose the product to temperatures above 70° C (155° F).
- Allow a minimum of 8 hours after baking before installation on the vehicle.

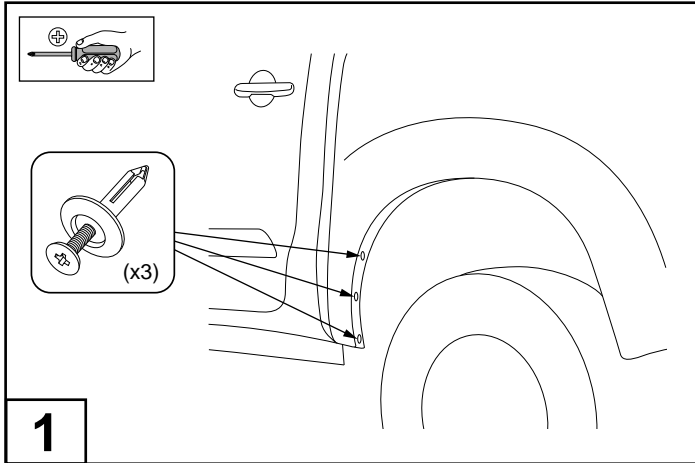
## COMPONENTS LIST

NO.	COMPONENT	QTY
1	Rear Fender Flares (RHS & LHS)	2
2	Scrivet	16
3	Extrusion	5m
4	Narrow Metal Clip	2
5	Alcohol Wipe	2
6	Primer Stick (not supplied for export)	2
7	Installation Instructions	1



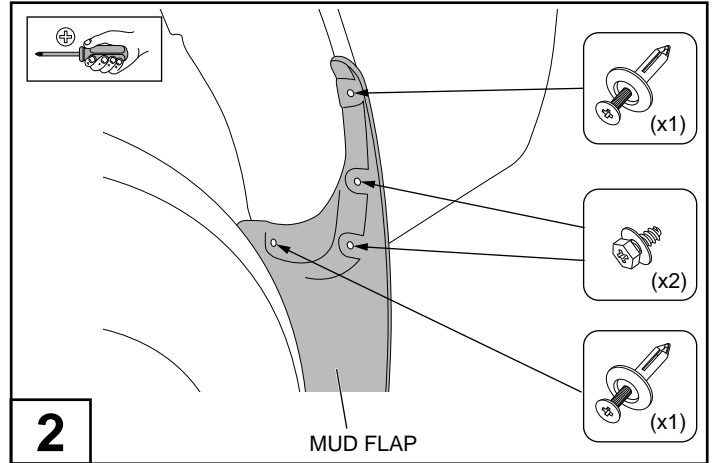
# REAR FENDER FLARES INSTALLATION INSTRUCTIONS

FF708g  
2/4



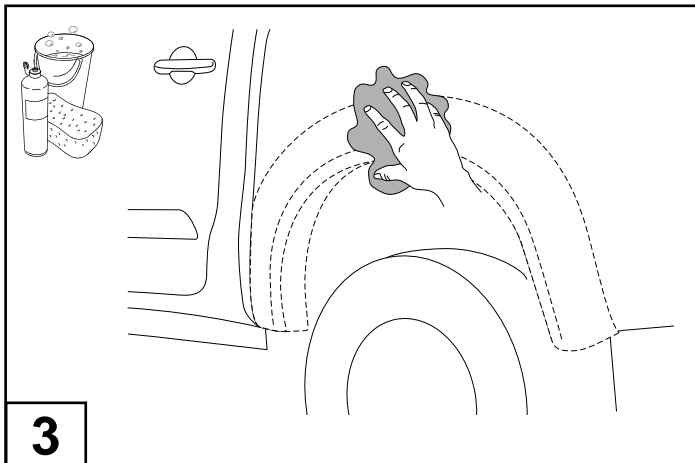
1

Remove the (3) screws from inside the rear wheel arch as shown.  
**NOTE:** Replacement scrivets are supplied, if any scrivets are damaged upon removing from the vehicle.



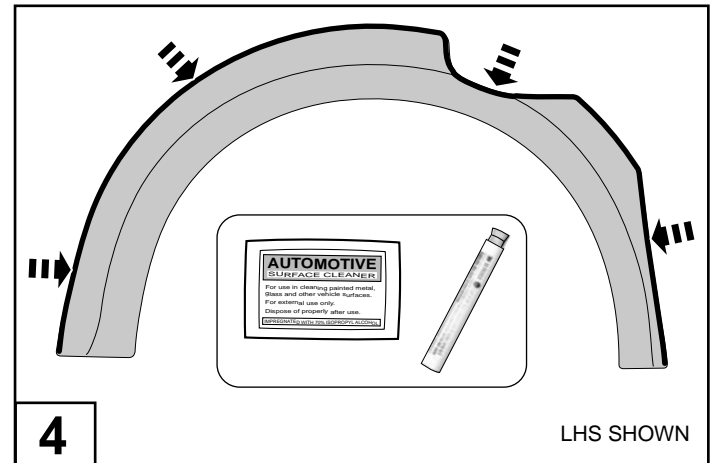
2

Remove the rear mud flaps by removing and retaining the (2) screws and (2) scrivets from inside the wheel arch as shown.



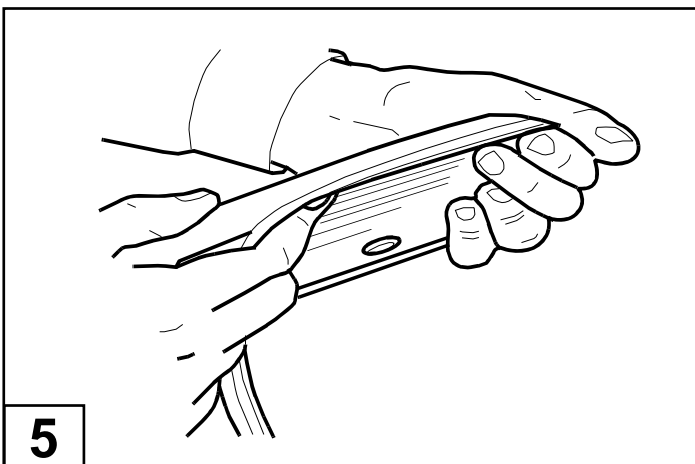
3

Wash the areas of contact on the vehicle and wipe dry both the vehicle and the Fender Flares with a clean cloth. Ensure inside of Fender Flares where extrusion is attached is clean.



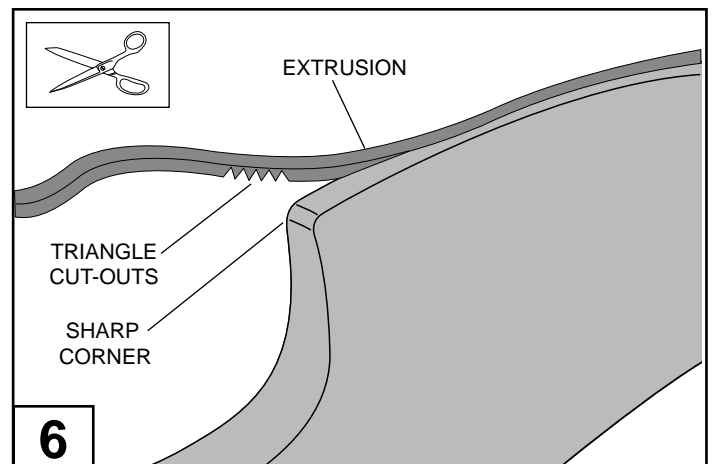
4

Clean the inside edge of each fender flare where the rubber extrusion will adhere with the Alcohol wipe and prime with the Primer Stick supplied.



5

Remove approximately 50mm of the protective liner from the extrusion. Fit the extrusion to the Fender Flare along the edge that comes in contact with the vehicle's body panel.

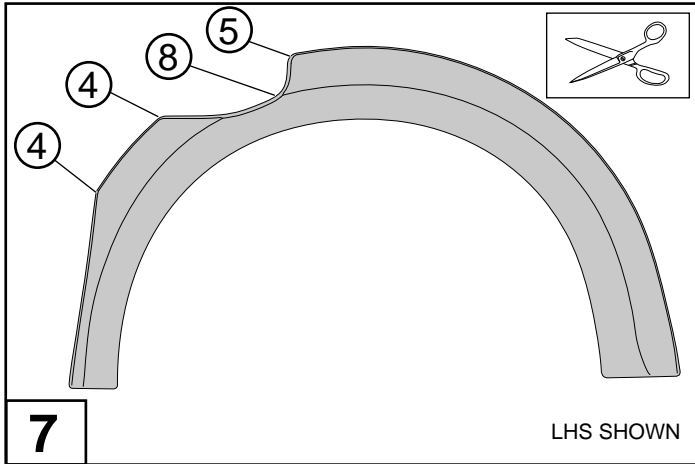


6

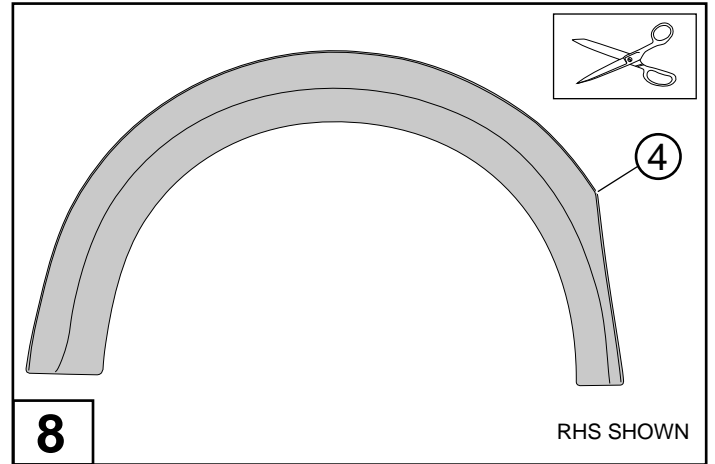
To fit the extrusion around sharp corners, cut a multiple triangles out of the extrusion where it meets the sharp corners as shown in steps 7 and 8.

# REAR FENDER FLARES INSTALLATION INSTRUCTIONS

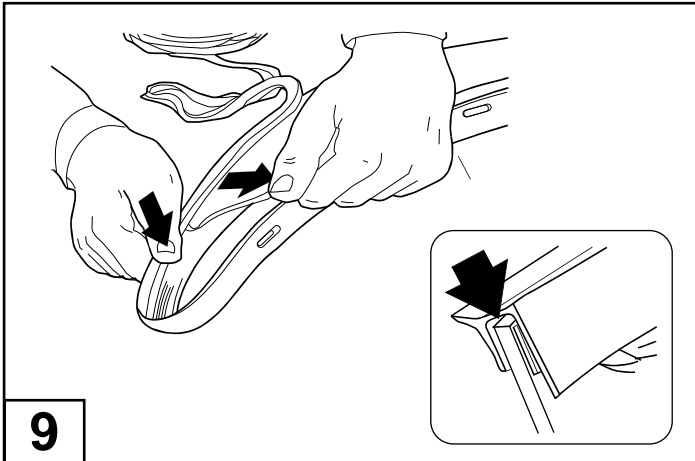
FF708g  
3/4



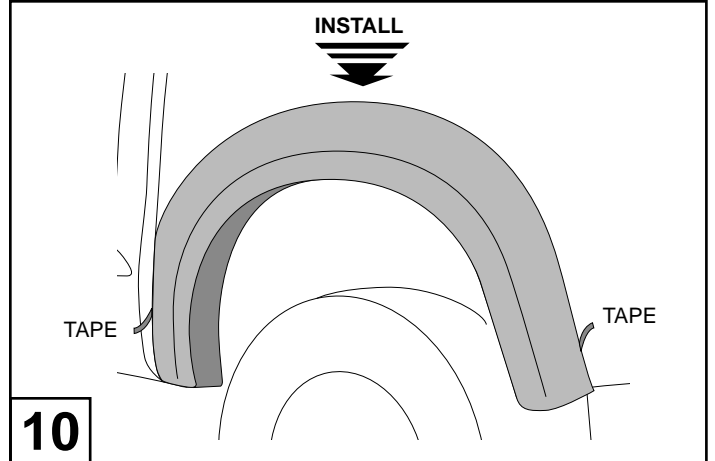
Cut a multiple triangles out of the extrusion where it meets the sharp corners as shown on the rear right flare.  
Note: Numbers of cut-outs indicated in circles.



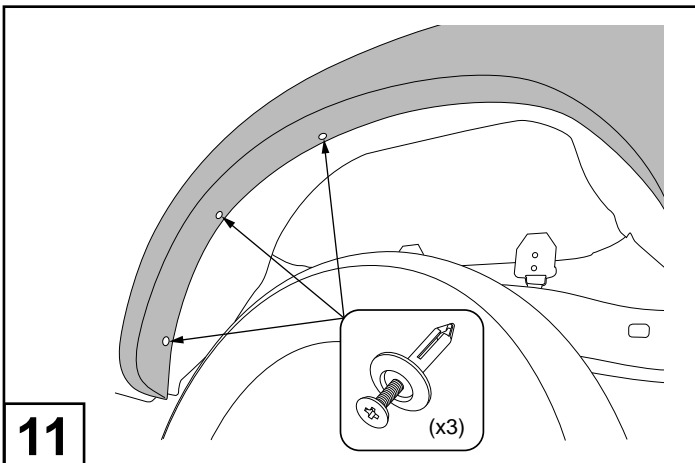
Cut a multiple triangles out of the extrusion where it meets the sharp corners as shown on the rear left flare.  
Note: Numbers of cut-outs indicated in circles.



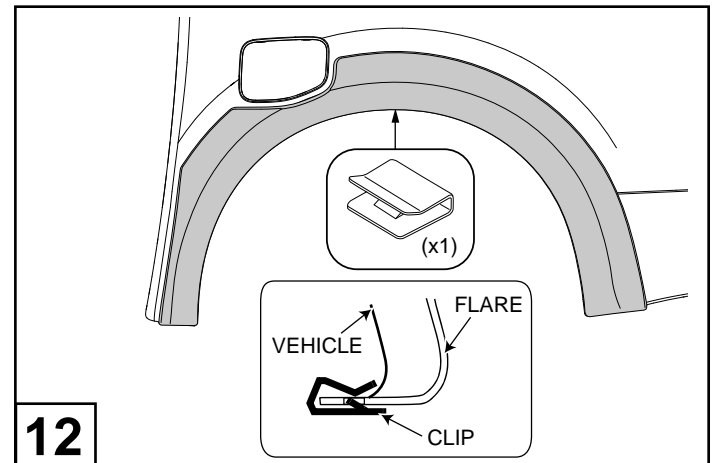
Pulling at right angles to the extrusion, remove the liner from the extrusion in small portions and apply thumb pressure to ensure that it adheres to the Fender Flares. Trim any unnecessary extrusion and discard.



Peel back red tape liner, about 50mm from each corner of the adhesive tape on the back of the fender flare. Fit the flare to the vehicle as shown.



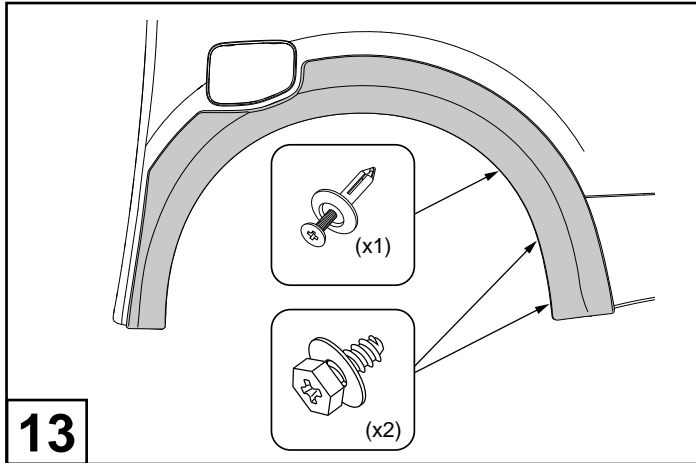
Attach the front part of the rear fender flare with 3 scrivets as shown



Secure the middle of the fender flare to the wheel arch using 1 small metal clip as shown.

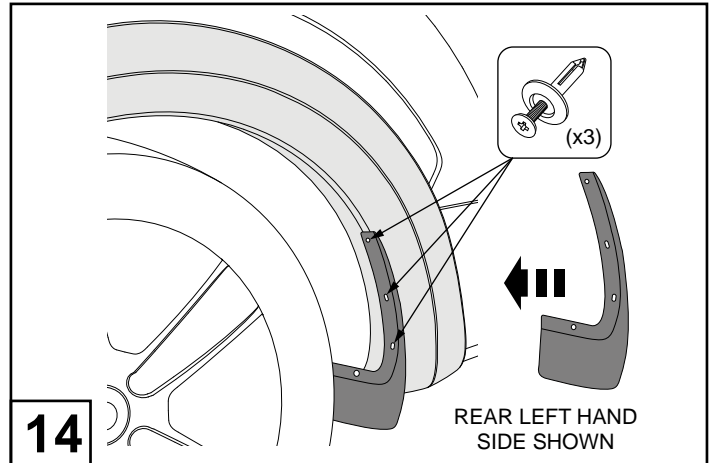
# REAR FENDER FLARES INSTALLATION INSTRUCTIONS

FF708g  
4/4



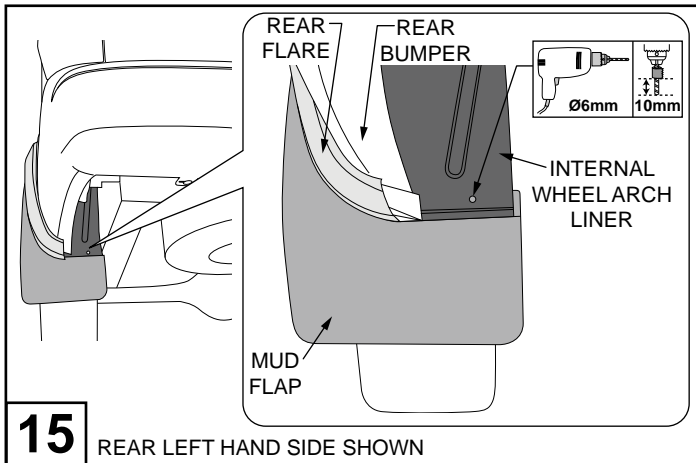
**13**

Secure the rear of the fender flare to the wheel arch using 1 scrivet and 2 screws as shown.



**14**

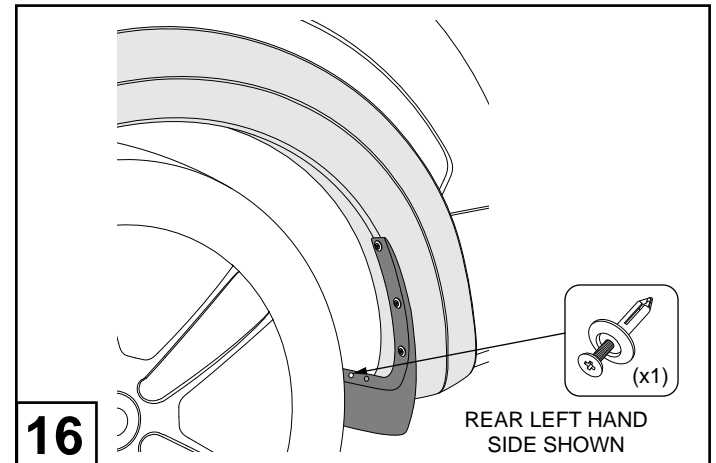
Fit the Mud Flaps to the Fender Flare and secure each Mud Flap with three (3) Scrivets supplied as shown.



**15**

REAR LEFT HAND SIDE SHOWN

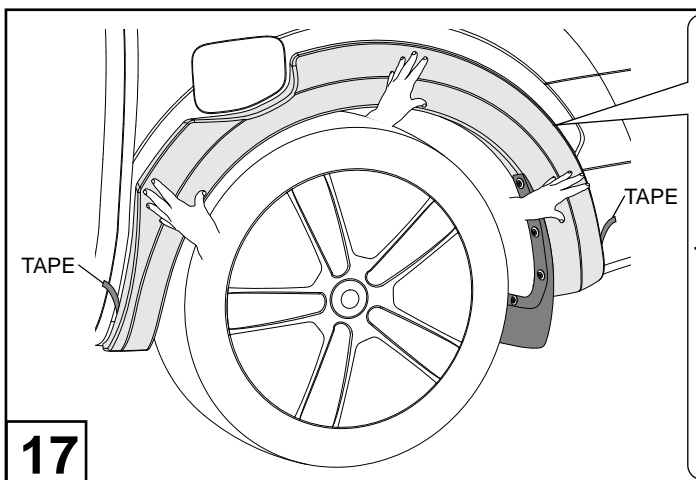
From the rear of the vehicle, clamp the Rear Mud Flap & (plastic) Internal Wheel Arch Liner. Using the hole in the Internal Wheel Arch Liner as a guide drill a Ø6mm hole through the Mud Flap as shown. Take care not to contact the tyres, use a 10mm drill stop.



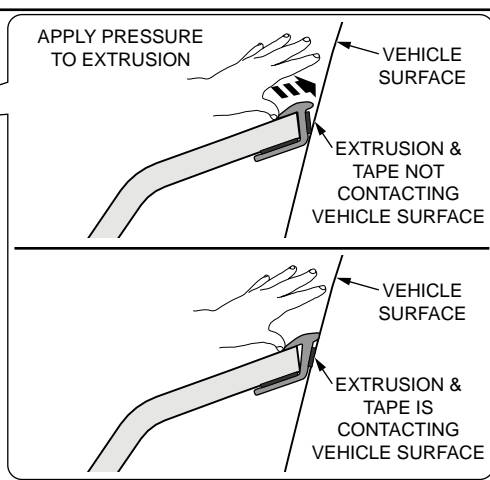
**16**

REAR LEFT HAND SIDE SHOWN

Fit one (1) Scrivet into previously drilled hole as shown.



**17**



Ensure that flares are aligned. Remove the tape liner. Using your thumb and/or fingers apply firm pressure on the extrusion to ensure the extrusion and the tape is contacting the vehicle surface around the full perimeter of the flares.