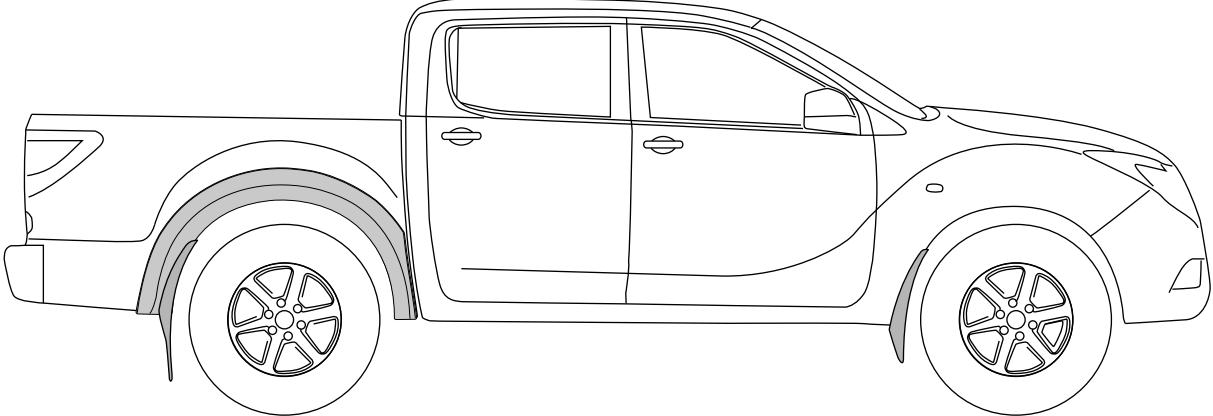


MAZDA BT-50 (October 2011 Production Onwards) REAR FENDER FLARES INSTALLATION INSTRUCTIONS

Installation Time: Approx. 30 Minutes



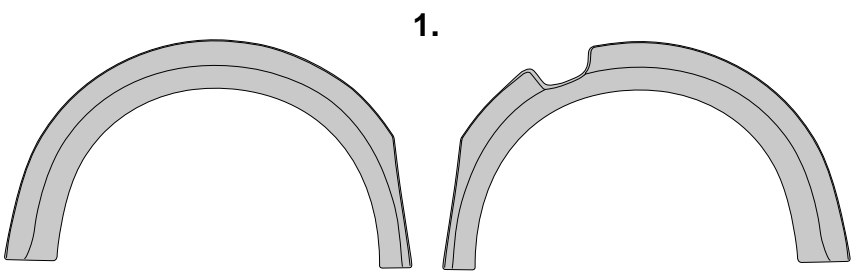
NOTES:

- Ensure that both left and right hand Fender Flares suit the profile of the vehicle. Note the areas where the Fender Flares come in contact with the vehicle.
- Before fitting Fender Flares remove any mouldings, strips or existing flares from the wheel arch. If there is a body side moulding, mark where the moulding is to be cut, alternatively the Fender Flares can be cut to go around the moulding. Be sure to allow enough room for the extrusion.

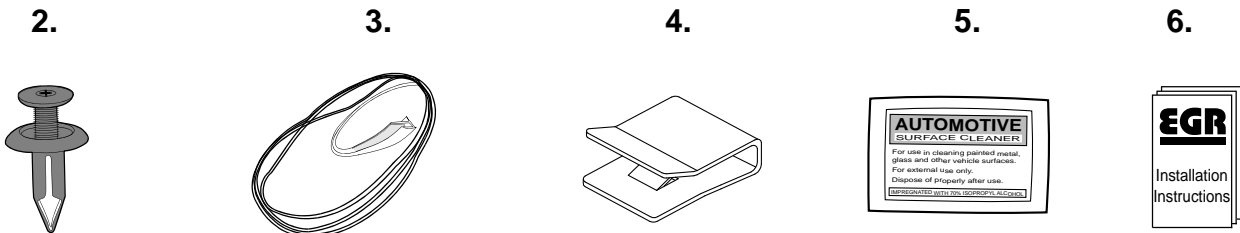
PAINTING INSTRUCTIONS:

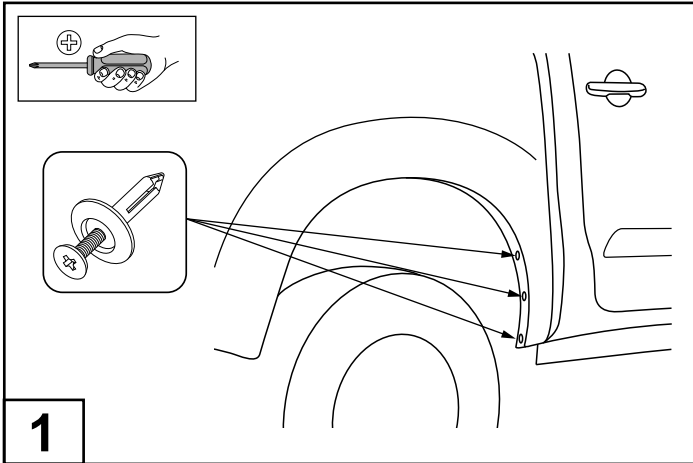
- ⚠ Warning: Do not fit trim edge extrusion or any of the hardware until paint is completely dry.**
- Spot Sand Fender Flares where required prior to painting, recommend 500 grit using an orbital type sander.
 - Prior to painting, clean all surfaces to be painted using clean water and a mild detergent, do not use lacquer thinner or any solvent based products. Wipe completely dry.
 - Best results will be achieved by wiping the areas to be painted with a tack rag just prior to painting.
 - Select a top coat and clear paint that is suitable for ABS (Acrylonitrile-Butadiene-Styrene).
 - Automotive paint systems, such as Acrylics or Two Packs, can be applied directly to the components. However, some paints may require a primer. If recommendations on paint specifications are not followed, cracking of the part or degradation to the material may result. In all paint systems, aromatic hydrocarbons and alkalis are best avoided to reduce damage to the material properties.
 - If using a paint system which requires baking, do not expose the product to temperatures above 70° C (155° F).
 - Allow a minimum of 8 hours after baking before installation on the vehicle.

COMPONENTS LIST



NO.	COMPONENT	QTY
1	Rear Fender Flares (RHS & LHS)	2
2	Scrivet	16
3	Extrusion	4.1m
4	Narrow Metal Clip	2
5	Alcohol Wipe	2
6	Installation Instructions	1

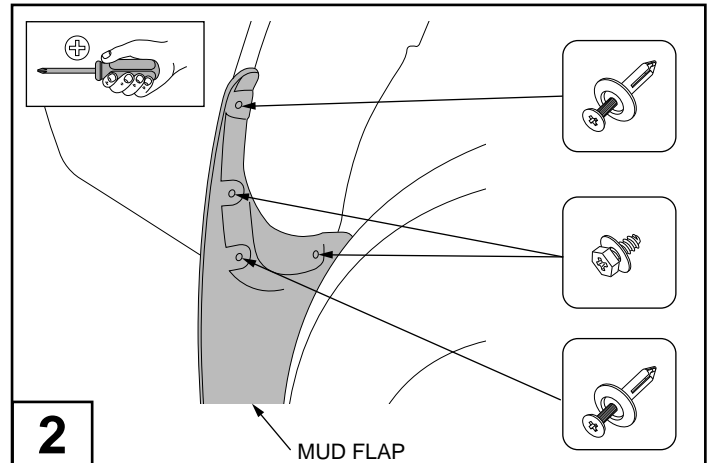




1

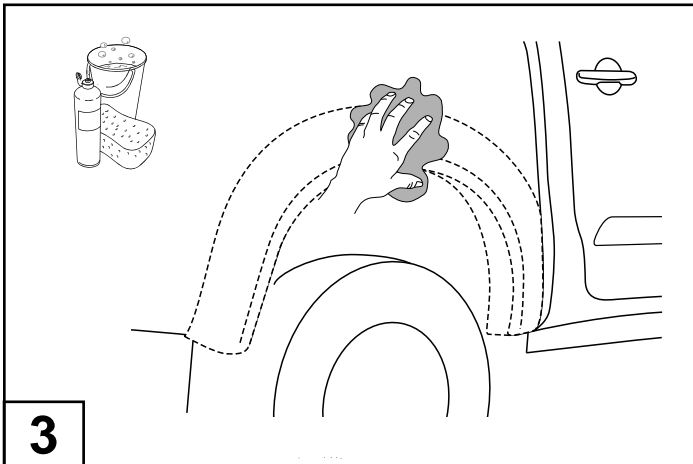
Remove the 3 screws from inside the rear wheel arch as shown.

NOTE: Replacement scrivets are supplied, if any scrivets are damaged upon removing from the vehicle.



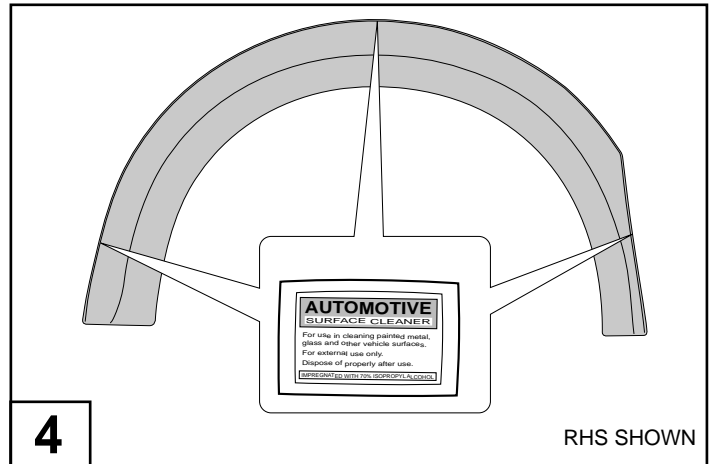
2

Remove the rear mud flaps by removing and retaining the 2 screws and two scrivets from inside the wheel arch as shown.



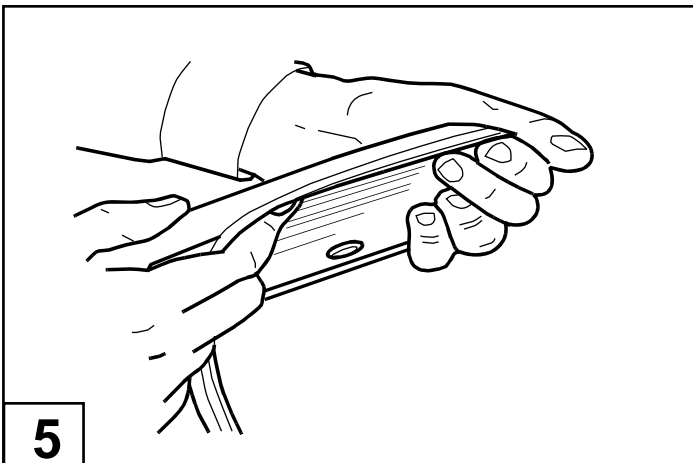
3

Wash the areas of contact on the vehicle and wipe dry both the vehicle and the Fender Flares with a clean cloth. Ensure inside of Fender Flares where extrusion is attached is clean.



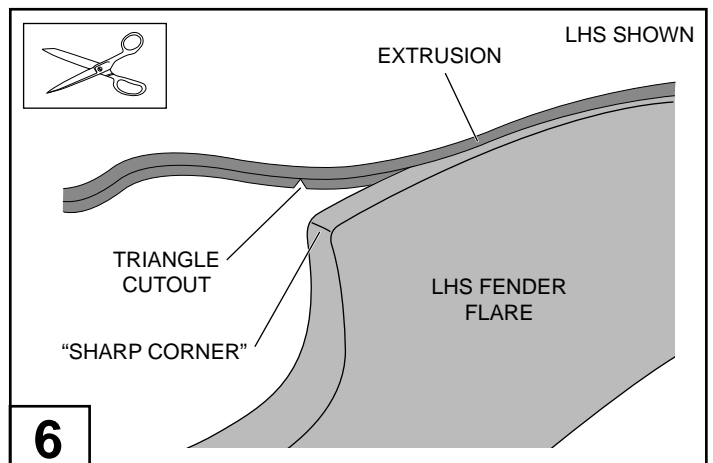
4

Clean the inside edge of each fender flare where the rubber extrusion will adhere.



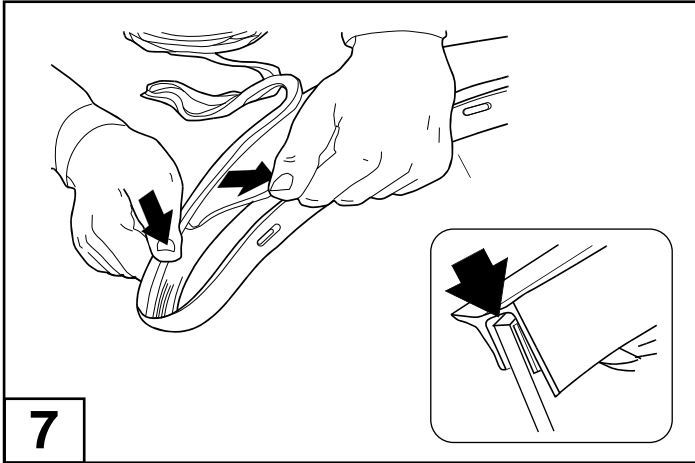
5

Remove approximately 50mm of the protective liner from the extrusion. Fit the extrusion to the Fender Flare along the edge that comes in contact with the vehicle's body panel.

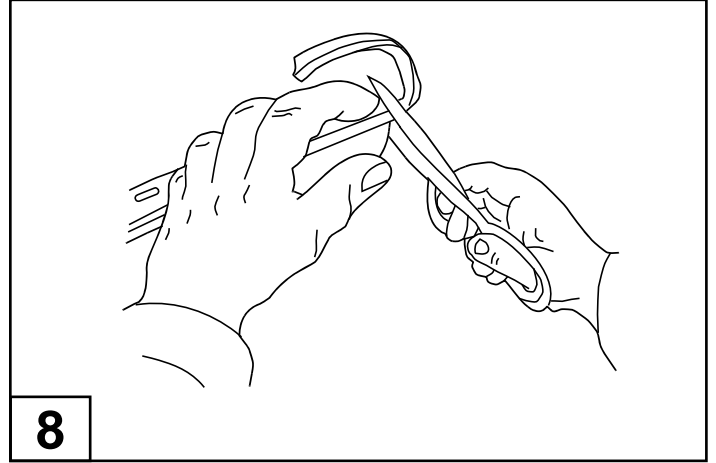


6

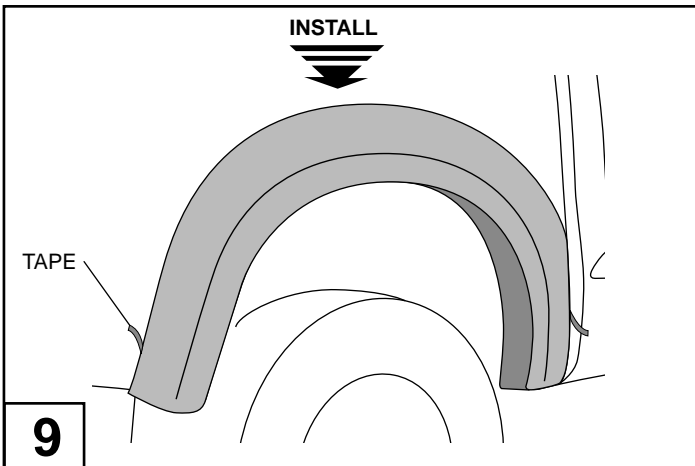
To fit the extrusion around the petrol cap cutout on the LHS flare, cut a triangle out of the extrusion where it meets the "sharp corner" as shown (fuel cap area).



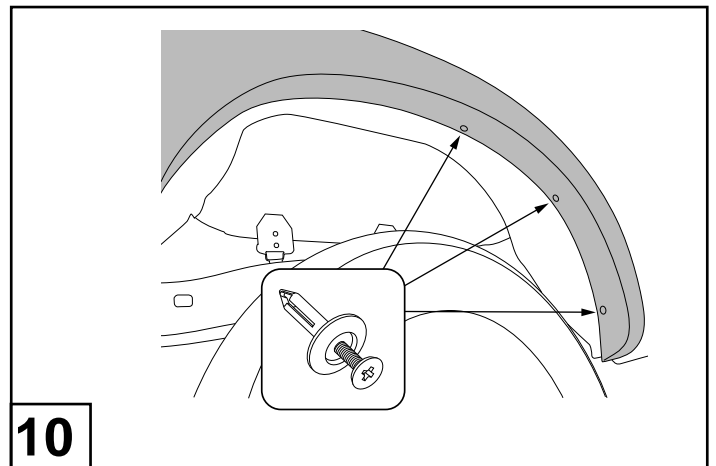
Pulling at right angles to the extrusion, remove the liner from the extrusion in small portions and apply thumb pressure to ensure that it adheres to the Fender Flares.



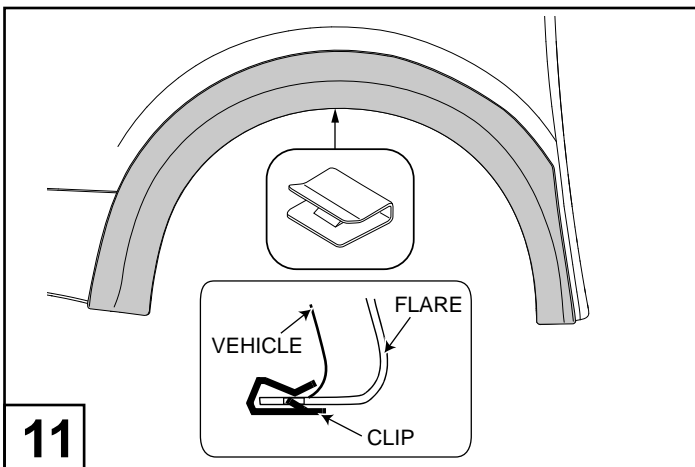
Trim any unnecessary extrusion and discard.



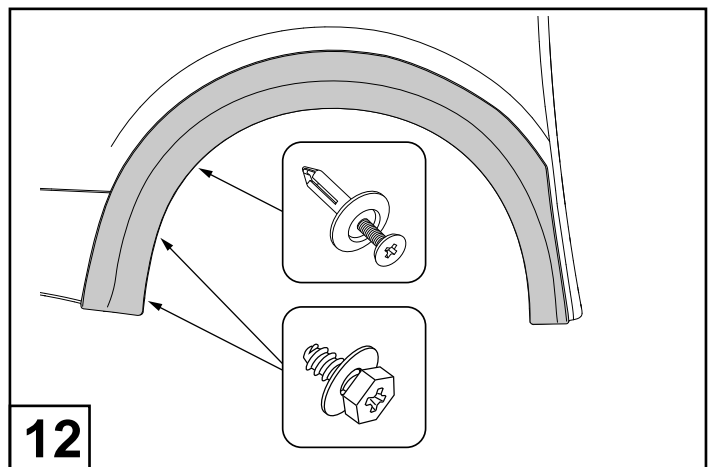
Peel back red tape liner, about 50mm from each corner of the adhesive tape on the back of the fender flare. Fit the flare to the vehicle as shown.



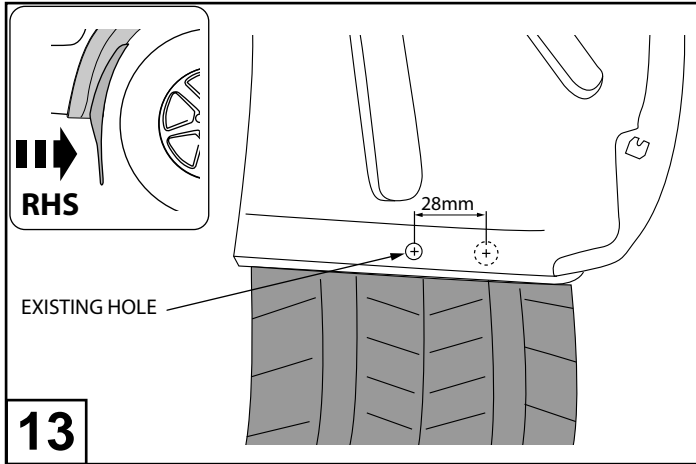
Attach the front part of the rear fender flare with 3 scrivets as shown.



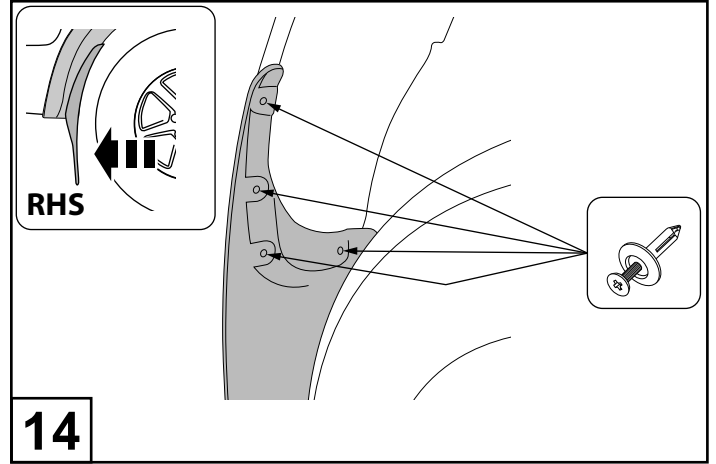
Secure the middle of the fender flare to the wheel arch using 1 small metal clip as shown.



Secure the rear of the fender flare to the wheel arch using 1 scrivet and 2 screws as shown. Remove the tape liner and apply firm pressure to ensure the tape is contacting the car body



From the back of the wheel arch mark new hole 28mm outboard from the existing hole, drill with 7mm drill as shown.



Reattach the mud flap to the fender flare using 4 scrivenets as shown.