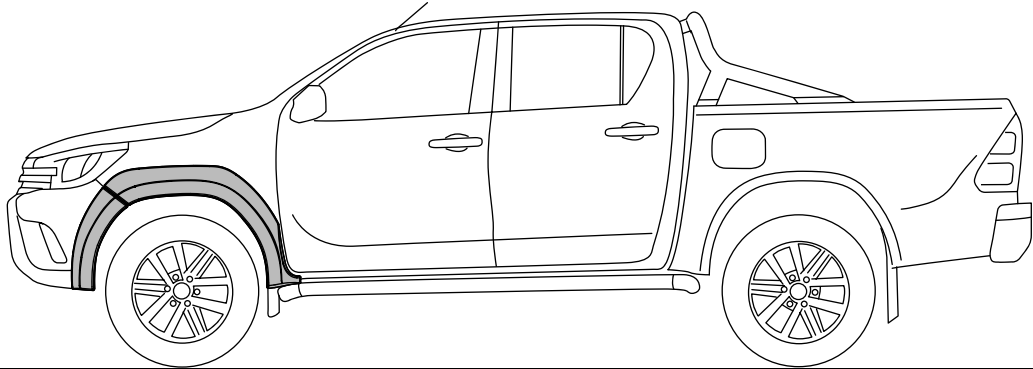


FRONT FENDER FLARES INSTALLATION INSTRUCTIONS

**TOYOTA HILUX from 2015 to July 2018
WIDE & NARROW BODY**



NOTES:

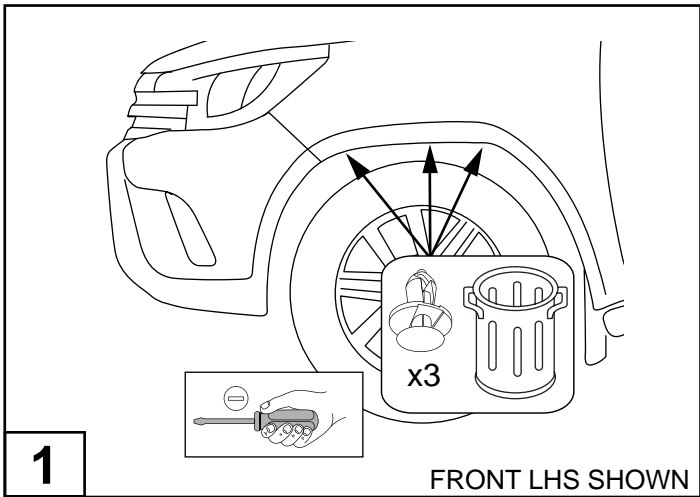
- Ensure that both left and right hand Fender Flares suit the profile of the vehicle. Note the areas where the Fender Flares come in contact with the vehicle.
- Before fitting Fender Flares remove any mouldings, strips or existing flares from the wheel arch. If there is a body side moulding, mark where the moulding is to be cut, alternatively the Fender Flares can be cut to go around the moulding. Be sure to allow enough room for the extrusion.
- Read instructions carefully. This product must be installed exactly as specified in these instructions. Failure to do so may result in improper fit and/or retention.

TOOLS REQUIRED:

- Phillips head Screwdriver.
- Flat head Screwdriver.
- Scissors
- 10mm Socket or Spanner
- Mild Soapy Water & Clean Cloths.

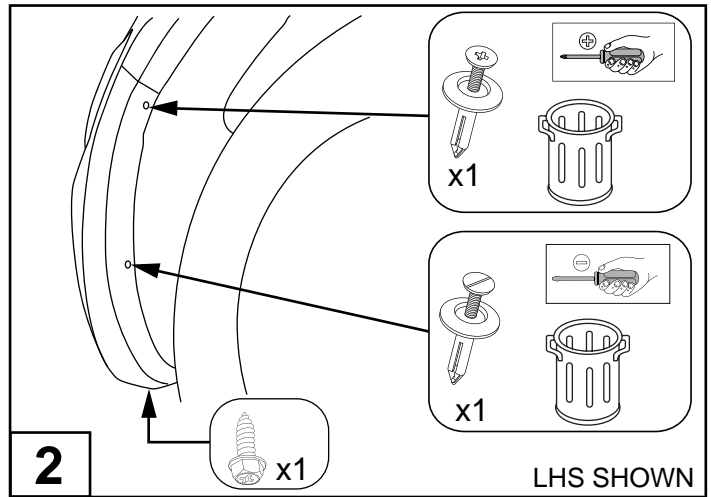
COMPONENTS LIST

						NO.	COMPONENT	QTY
①			②			1	Front LHS Fender Flare	1
			③			2	Front LHS Bumper Flare	1
			④			2	Front RHS Bumper Flare	1
⑤			⑥			5	Rubber Extrusion 700mm	2
⑦			⑧			6	Rubber Extrusion 1500mm	2
			⑨			7	Primer Stick	4
			⑩			8	Alcohol Wipe	1
⑪			⑬			9	Phillips Head Screw (small)	6
⑫						10	Phillips Head Screw (large)	6
						11	G-Clip	6
						12	Speed Nut	6
						13	Installation Instruction	1



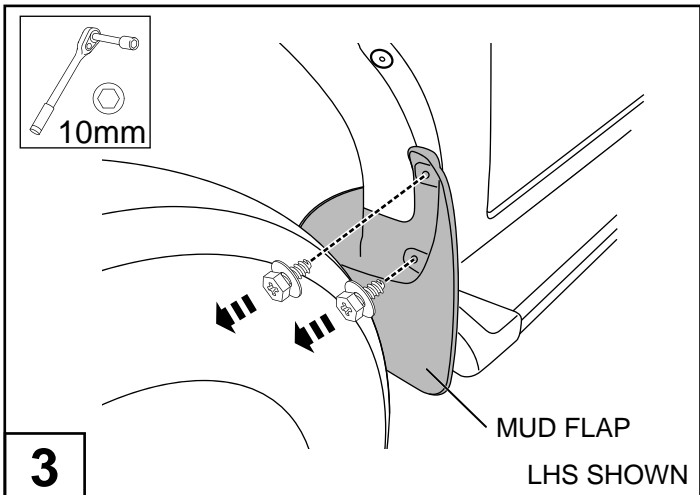
FRONT LHS SHOWN

Using flat head screwdriver remove and discard the 3 plastic scrivenets from the front fender as shown.



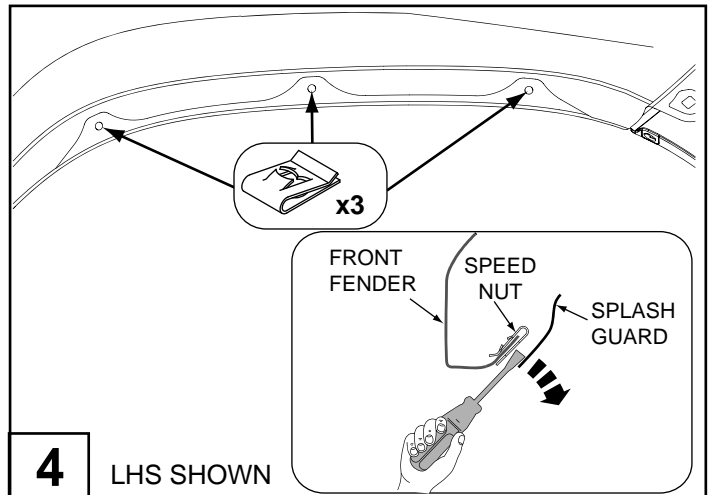
LHS SHOWN

Using Phillips head screwdriver remove and discard the top scrivenet from the front bumper bar inner arch. Using flat screwdriver remove and discard the lower plastic scrivenet as shown. Remove and retain the lower screw.



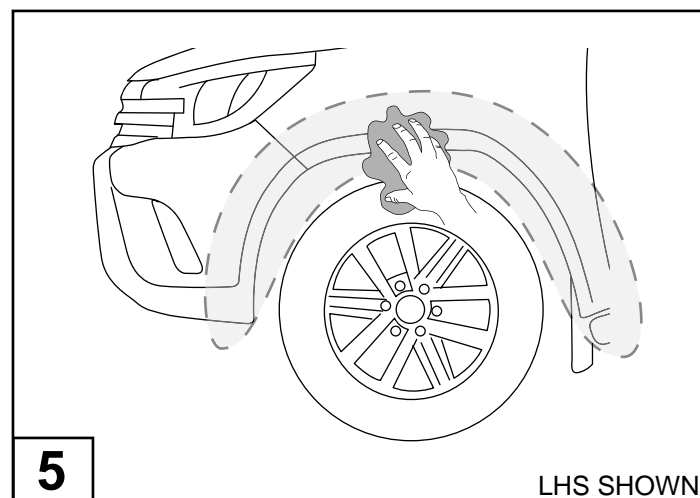
LHS SHOWN

Remove and retain the 2 screws holding mud flap as shown. Use 10mm spanner or Phillips head screwdriver. Mud flap will still remain attached to the vehicle with one screw.



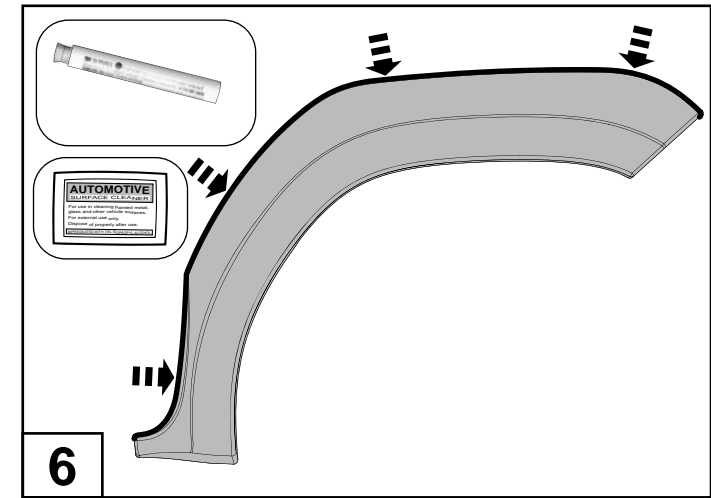
LHS SHOWN

Fit 3 Speed Nuts to the fender as shown in section detail. Note: Use lever to push away the inner splash guard. Take care not to damage the fender.



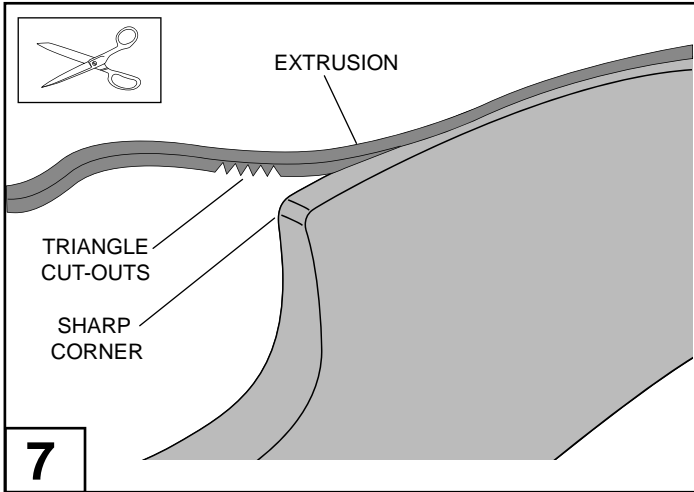
LHS SHOWN

Wash the areas of contact on the vehicle and wipe dry with a clean cloth.

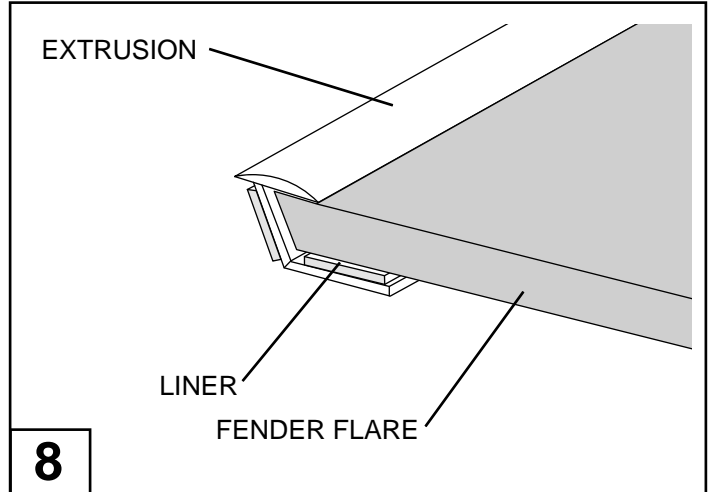


6

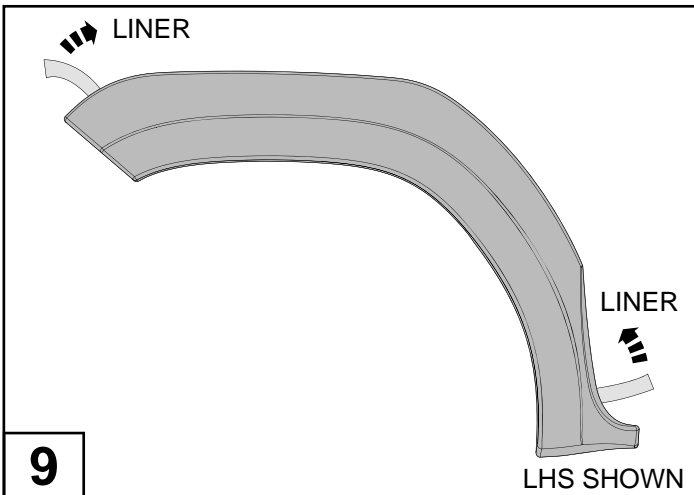
Clean the inside edge of each fender flare where the rubber extrusion will adhere with the Alcohol wipe and prime with the Primer Stick supplied.



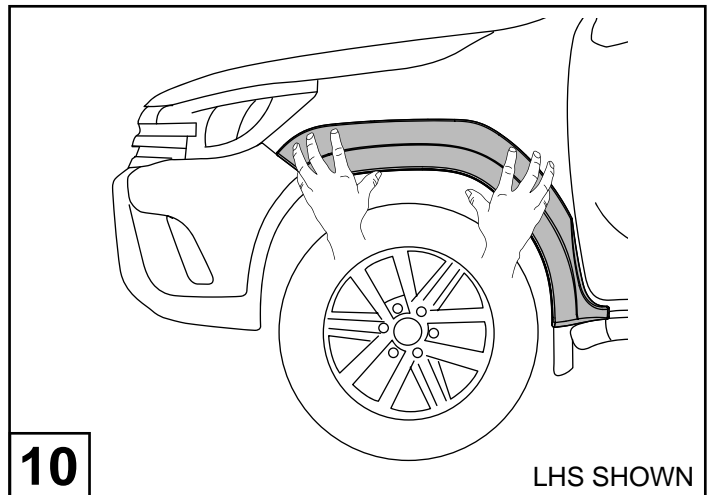
To fit the extrusion around sharp corners, cut multiple triangles out in the extrusion as shown.



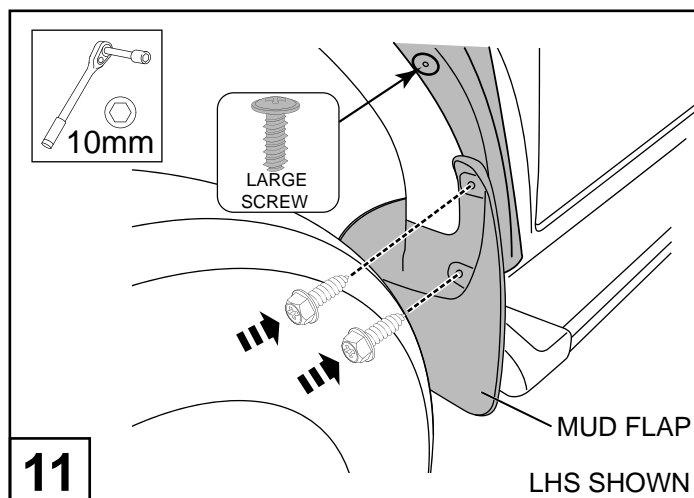
Fit the extrusion to Fender Flares along the edge. While slowly removing the protective liner from the extrusion, apply pressure to the extrusion to adhere to the fender flare.



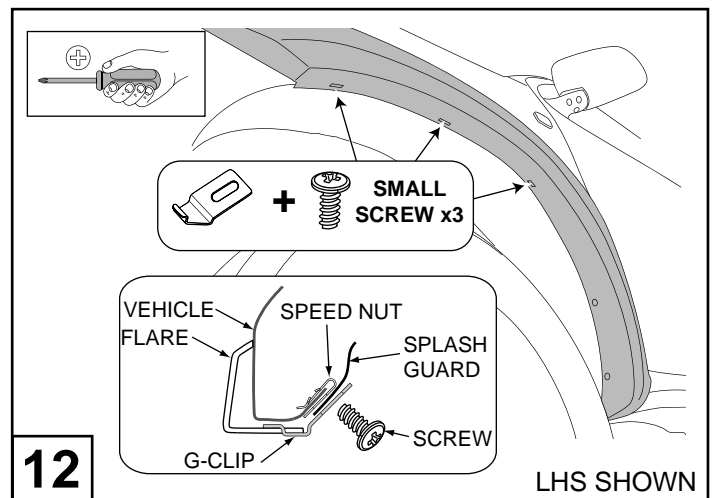
Peel 50mm of the protective liner that contacts vehicle from each end of the extrusion and fold to the outside.



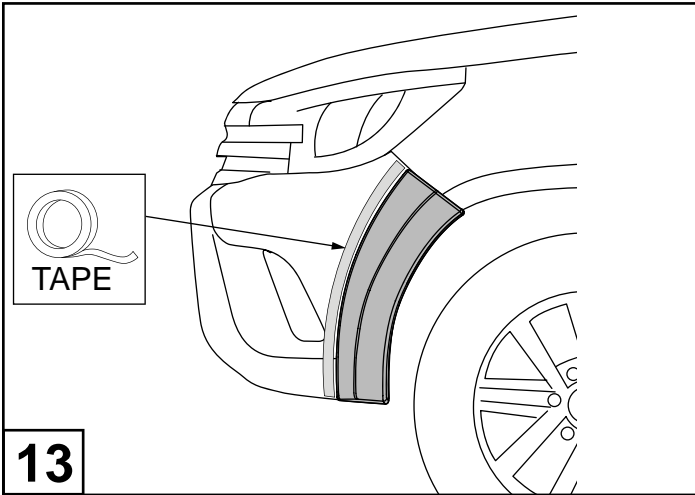
Fit the fender flare to the vehicle.



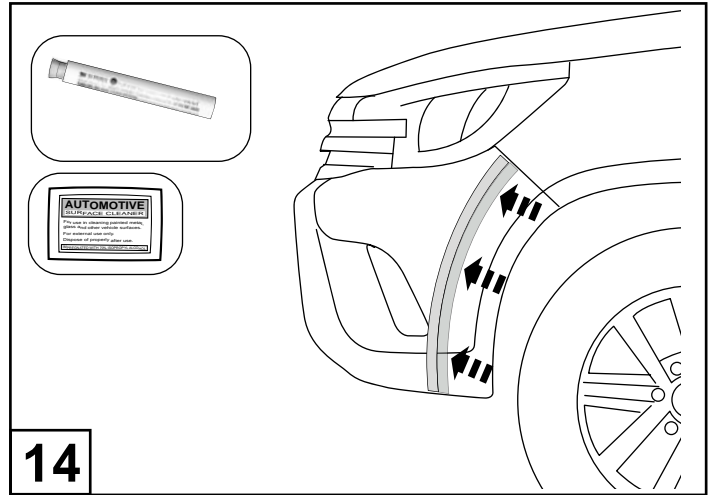
Using 10mm spanner or Phillips head screwdriver secure the mud flap and fender flare using the previously removed 2 screws and one large phillips head screw.



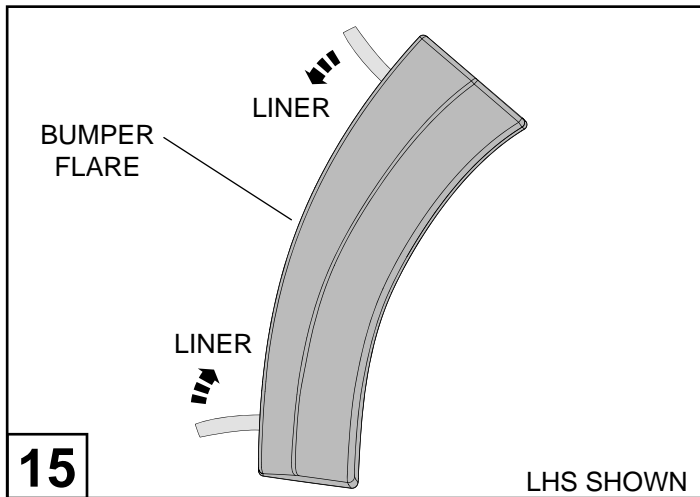
Fit the G-Clip to the slot in the fender flare and secure with screw into the speed nut previously fitted. While pressing and holding the flare in position of best fit, proceed to tighten the screws.



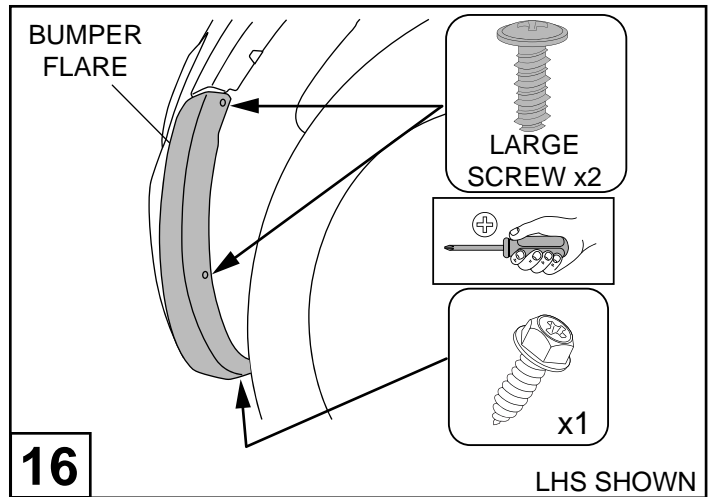
Place the bumper flare on the bumper and mark the outside edge of the flare with masking tape. Remove the flare.



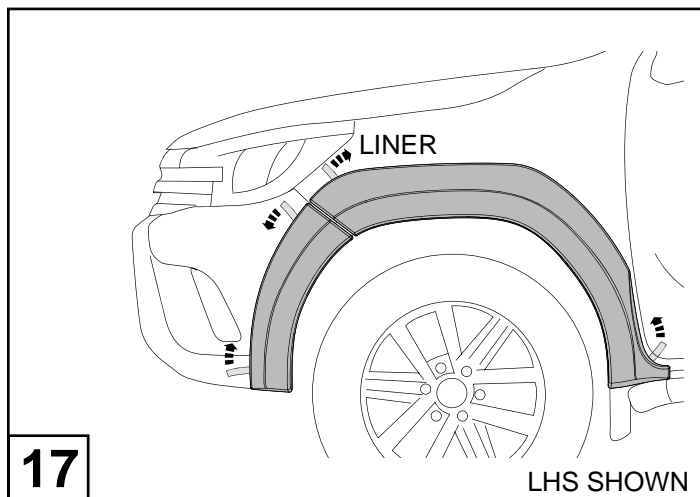
Clean the bumper bar where the rubber extrusion will adhere with the Alcohol wipe and prime with the Primer Stick supplied.
Note: Use the tape as a guide and remove afterwards.



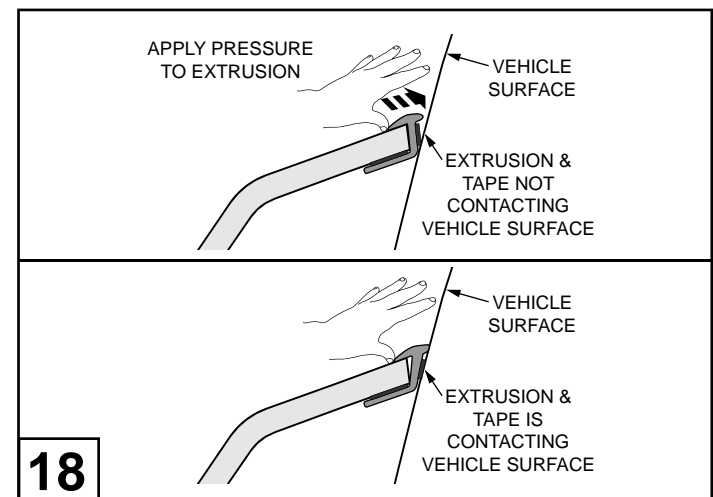
Peel 50mm of the protective liner from each end of the extrusion that contact vehicle and fold to the outside of the bumper flare.



Using 10mm spanner and Phillips head screwdriver secure the bumper flare with 2 new screws and 1 existing screw removed from the bumper bar beforehand, as shown.



Once the bumper flare is fitted, pull all exposed liners at right angle to flares, then apply pressure around edge of the flares to achieve proper adhesion.



Apply pressure around edge of fender flare to achieve proper adhesion.