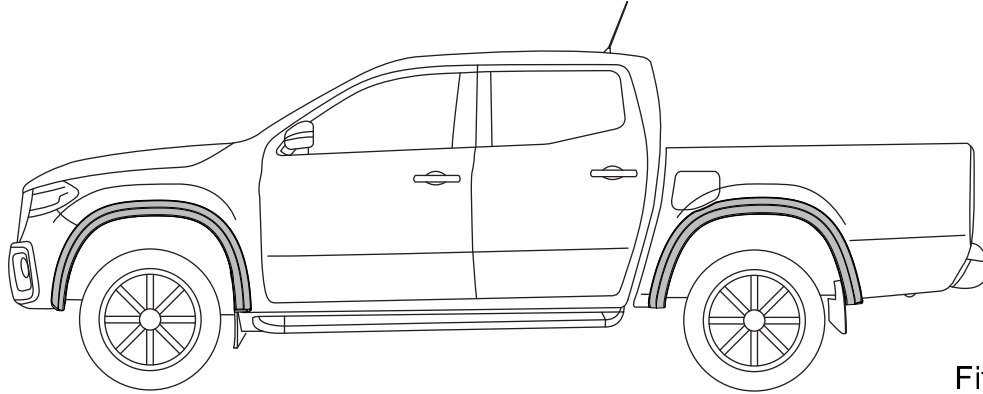


MERCEDES X-CLASS MY17-

Fitting time: 1.5hr

NOTES:

- Ensure that both left and right hand Fender Flares suit the profile of the vehicle. Note the areas where the Fender Flares come in contact with the vehicle.
- Before fitting Fender Flares remove any mouldings, strips or existing flares from the wheel arch. If there is a body side moulding, mark where the moulding is to be cut, alternatively the Fender Flares can be cut to go around the moulding. Be sure to allow enough room for the extrusion.
- Read instructions carefully. This product must be installed exactly as specified in these instructions. Failure to do so may result in improper fit and/or retention.

PAINTING INSTRUCTIONS:

⚠ Warning: Do not fit trim edge extrusion or any of the hardware until paint is completely dry.

- Spot Sand Fender Flares where required prior to painting, recommend 500 grit using an orbital type sander.
- Prior to painting, clean all surfaces to be painted using clean water and a mild detergent, do not use lacquer thinner or any solvent based products. Wipe completely dry.
- Best results will be achieved by wiping the areas to be painted with a tack rag just prior to painting.
- Select a top coat and clear paint that is suitable for ABS (Acrylonitrile-Butadiene-Styrene).
- Automotive paint systems, such as Acrylics or Two Packs, can be applied directly to the components. However, some paints may require a primer. If recommendations on paint specifications are not followed, cracking of the part or degradation to the material may result. In all paint systems, aromatic hydrocarbons and alkalis are best avoided to reduce damage to the material properties.
- If using a paint system which requires baking, do not expose the product to temperatures above 70° C (155° F).
- Allow a minimum of 8 hours after baking before installation on the vehicle.

Tools required for this fitment:

- | | | |
|--|------------------------------------|-------------------|
| • Small flat head Screwdriver. | • Scissors or Sharp Knife. | • Torx T20 Drive. |
| • Phillips head Screwdriver. | • Masking Tape | |
| • Non Permanent Marker / Metal Scribe. | • Mild Soapy Water & Clean Cloths. | |

FRONT FENDER FLARES INSTALLATION INSTRUCTIONS

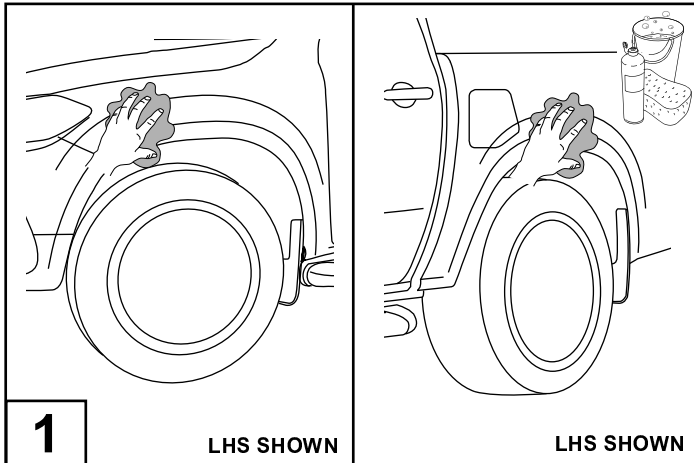
FF911
2/7

PARTS IN FITTING KIT

NO.	COMPONENT	PART NUMBER	QTY	FR/RE	PART
1	Front Fender Flares (RHS & LHS)	S07109-LF/RF	2	2 FR	
2	Rear Fender Flares (RHS & LHS)	S07110-LR/LF	2	2 RE	
3	Extrusion (2.2m each)	MISC4524	4	2 FR 2 RE	
4	Angle Clip	CLIP0896PC	4	4 FR	
5	Narrow Clip	CLIP1074PC	10	2 FR 8 RE	
6	Wide Clip	CLIP1592PC	2	2 FR	
7	Wing Clip	CLIP1375	2	2 FR	
8	Bottom Clip	CLIP1388	4	2 FR 2 RE	
9	Washer	WASH0041-1	4	2 FR 2 RE	
10	Washer	WASH0099	2	2 FR	
11	Scrivet	FAST0086	10	4 FR 6 RE	
12	Wafer Head Screw	SCRW0468	2	2 FR	
13	Hex Head Screw	SCRW0450-1	4	2 FR 2 RE	
14	Mudflap Bracket	MISC4786	2	2 RE	
15	Alcohol Wipe	MISC0052	4	2 FR 2 RE	
16	Primer	MISC1365	6	3 FR 3 RE	
17	Anti Abrasive Tape	TAPE0011	2	2 FR	
18	Installation Instructions	FF-911	1	1	

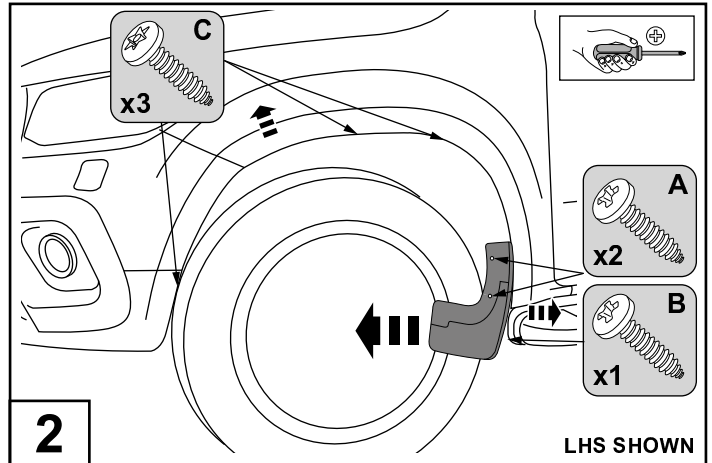
FRONT FENDER FLARES INSTALLATION INSTRUCTIONS

FF911
3/7



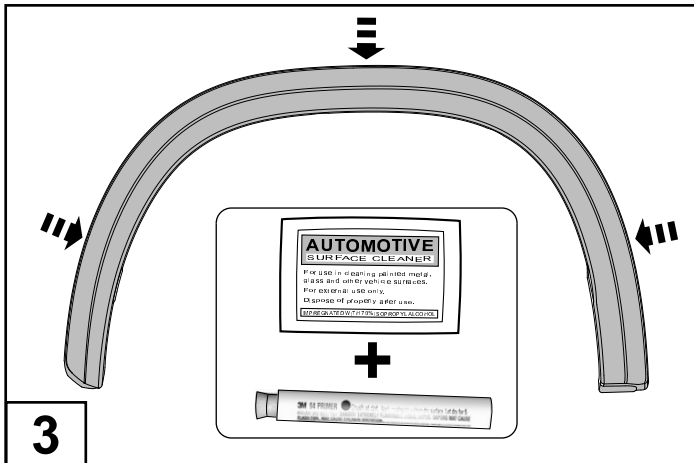
1 LHS SHOWN LHS SHOWN

Wash the areas of contact on the vehicle and wipe dry both the vehicle and the Fender Flares with a clean cloth. Ensure inside of Fender Flares where extrusion is to be attached is clean.



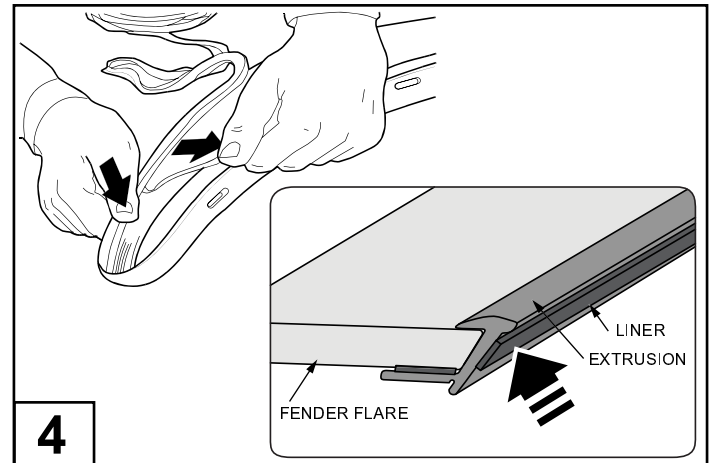
2 LHS SHOWN

Remove the front mudflaps by removing two screws (A) from inside the wheel arch as shown and discard. Remove one screw (B) from under the wheel arch, just behind the mudflap. Retain for later use. Remove three torx screws (C) from the wheel arch as shown. Retain for later use.



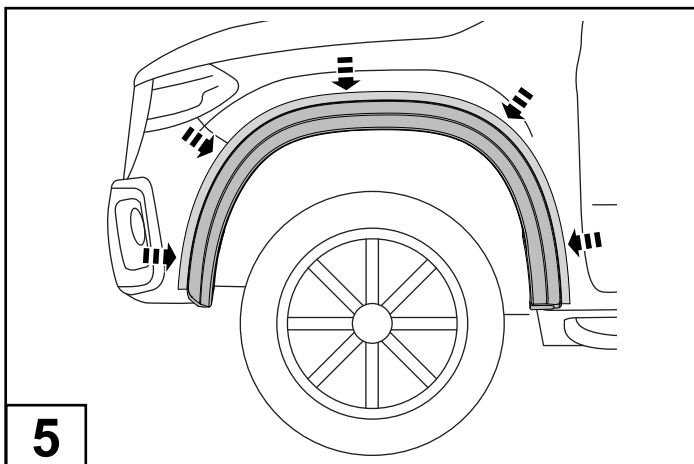
3

Where the rubber extrusion will adhere, clean the inside edge of each Front Fender Flare (1) with an Alcohol Wipe (15) and apply Primer (16). One Primer per pair of Flares.



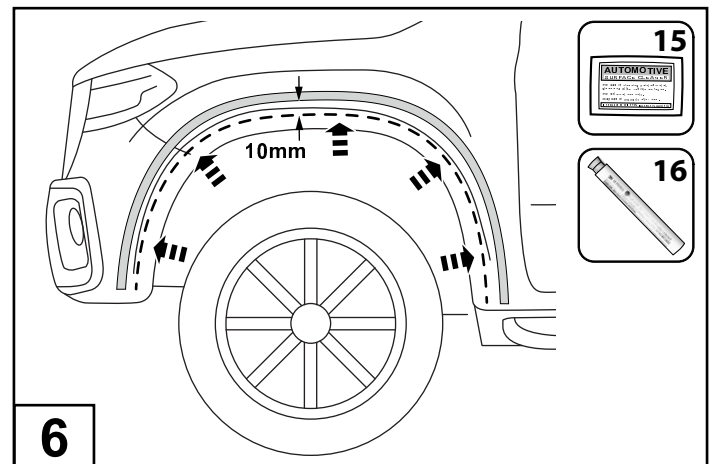
4

Remove approximately 50mm of the protective liner from the Extrusion (3). Fit the extrusion to the Front Fender Flares (1) along the edge that comes in contact with the vehicle's body panel. Trim any unnecessary extrusion and discard.



5

Place and hold the Front Fender Flare (1) against the car and get a second person to mask the border around the flare using masking tape.

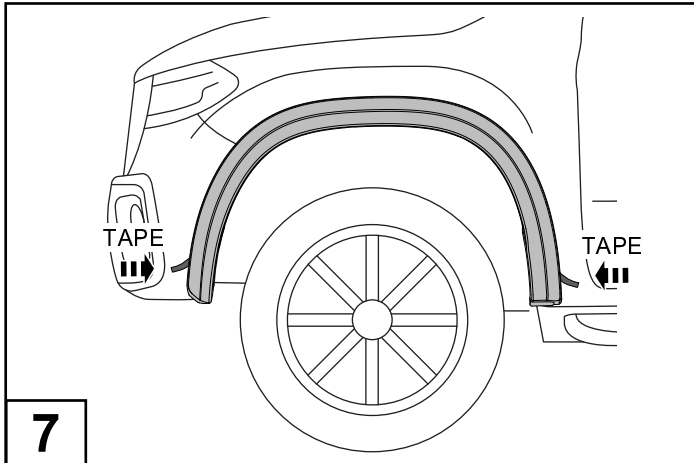


6

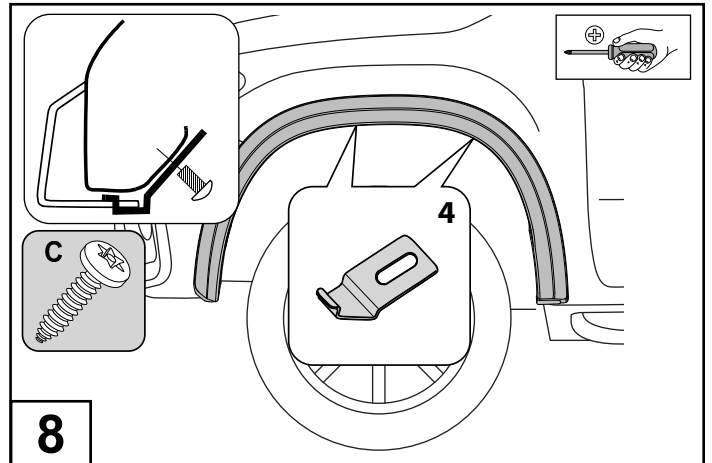
Remove the flare and use Alcohol Wipes (15) to clean 10mm of the area inside side from the tape and apply a Primer Stick (16). One Primer per fender wheel arch.

FRONT FENDER FLARES INSTALLATION INSTRUCTIONS

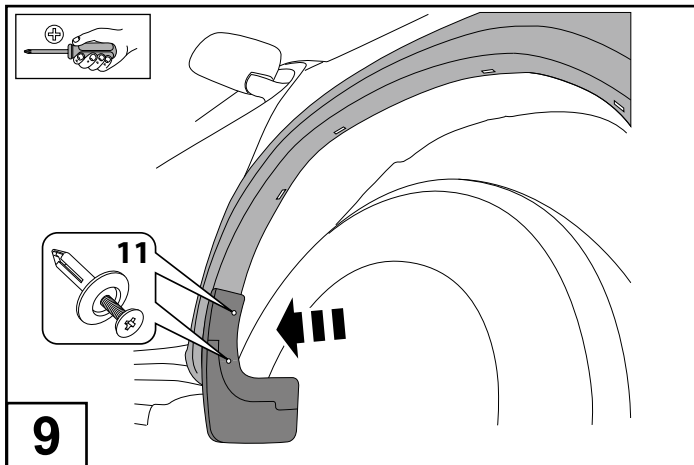
FF911
4/7



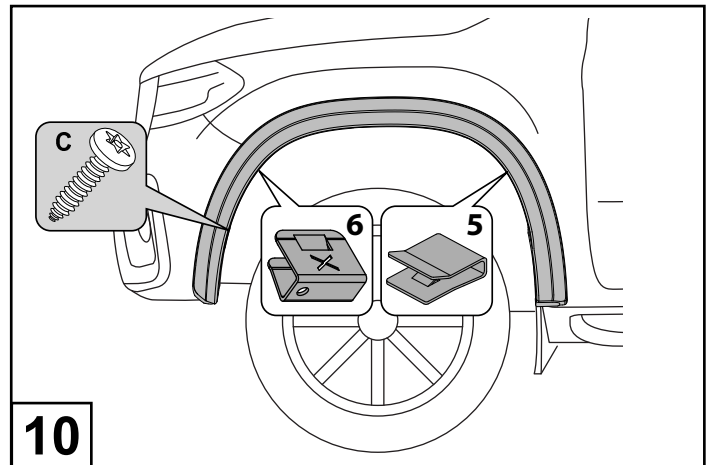
7 Peel back red tape liner, about 50mm from each corner of the adhesive tape on the back of the Front Fender Flare (1). Fit the flare to the vehicle as shown, aligning with the holes for the mudflap.



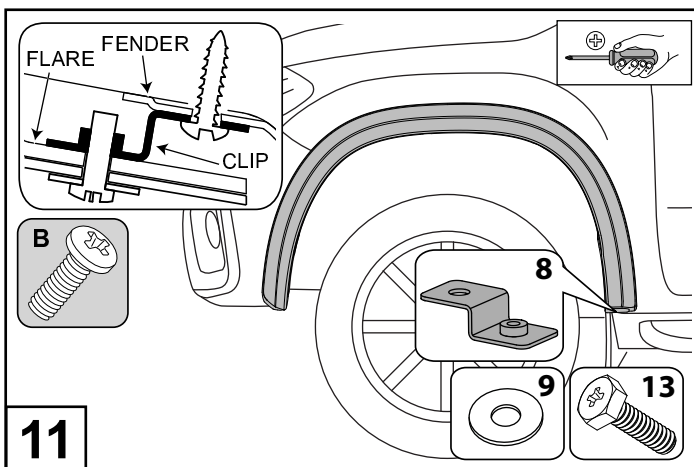
8 Fit the Angle Clips (4) in positions shown, securing in place with two of the retained existing torx screws (C).



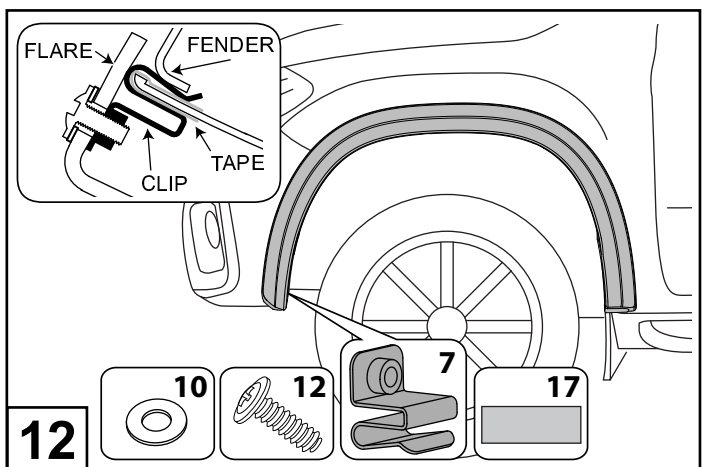
9 Secure the mudflap and Front Fender Flare (1) with two of the provided Scrivets (11).



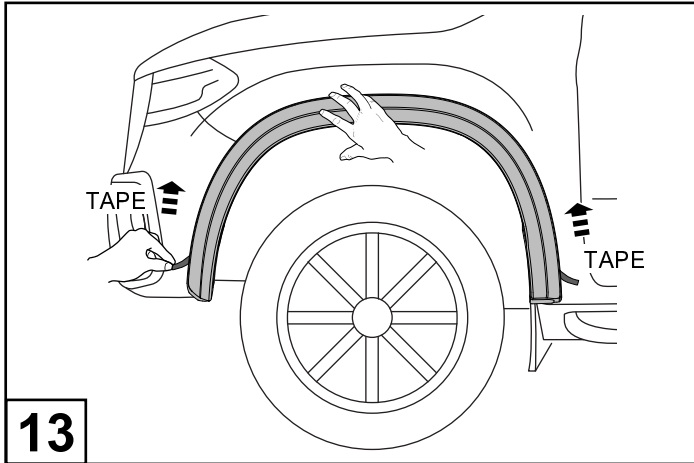
10 Fit the Wide Clip (6) and Narrow Clip (5) as shown, ensuring the notch in the clip locates securely into the slot in the Front Fender Flare (1). Screw one of the retained existing torx screws (C) in the position shown.



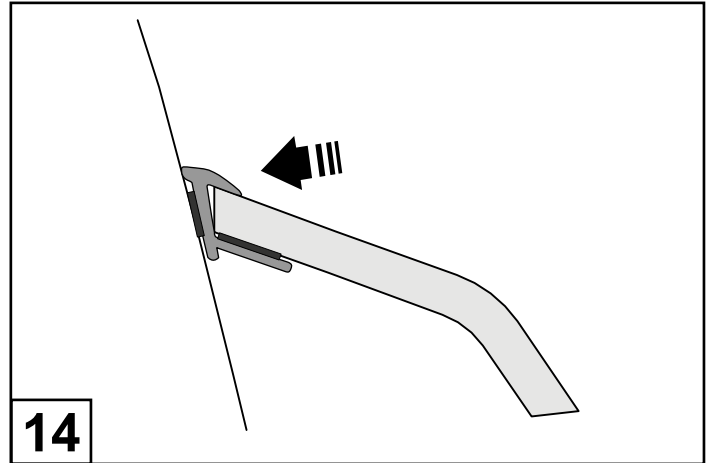
11 Screw Bottom Clip (8) to the fender using existing screw (B). Fix the Front Fender Flare (1) and mudflap to the Bottom Clip (8) using a Hex Head Screw (13) and a Washer (9).



12 Apply the Anti Abrasive Tape (17) to the vehicle. Clip the Wing Clip (7) the the fender as shown. Then secure the Front Fender Flare (1) to the Wing Clip (7) using a Wafer Head Screw (12) and Washer (10).

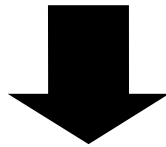


Ensure that flares are aligned. Remove the tape liner. Apply firm pressure on the flare to ensure the tape is contacting the vehicle surface around the full perimeter of the flares.



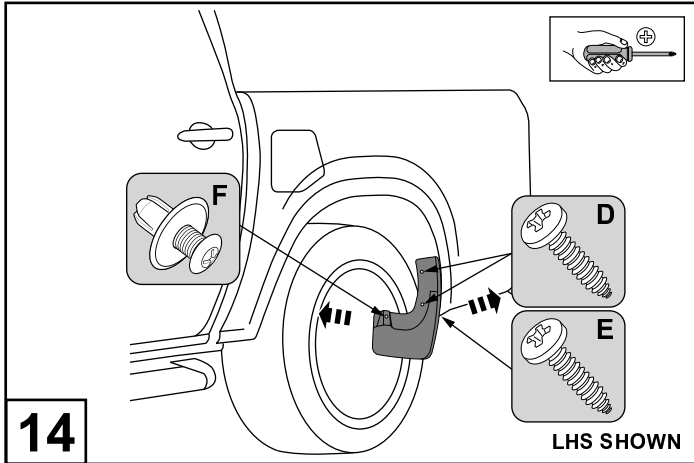
Ensure the extrusion is firmly applied and flush with the vehicle.

THIS HAS BEEN LEFT INTENTIONALLY BLANK

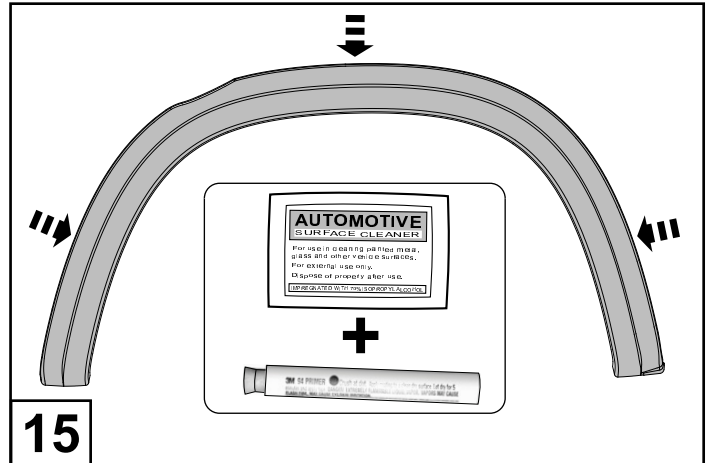


REAR FENDER FLARES INSTALLATION INSTRUCTIONS

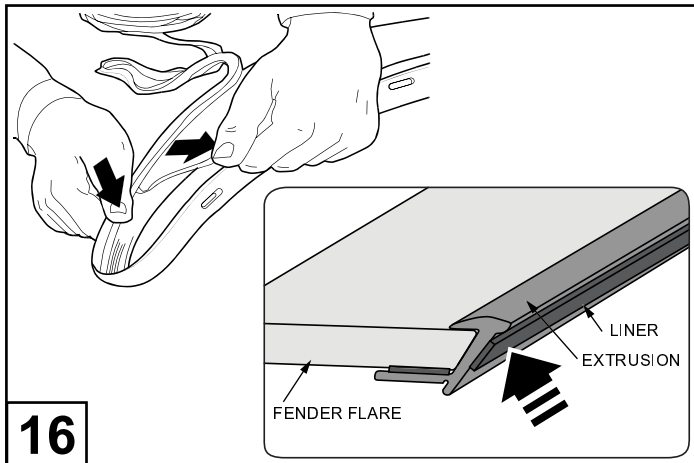
FF911
6/7



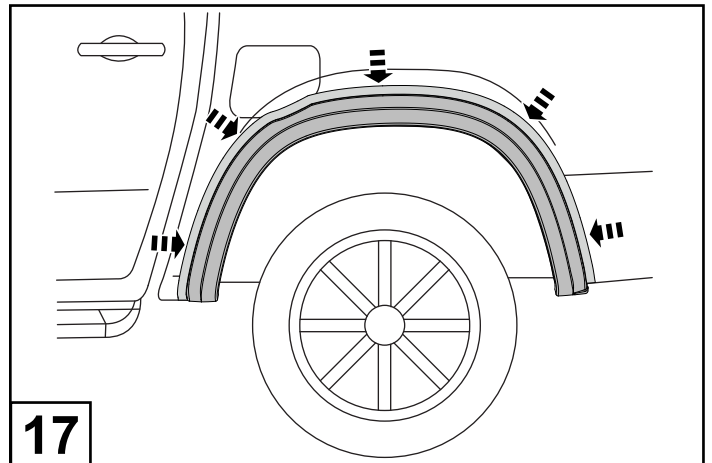
14 Remove the rear mudflaps by removing two screws (D) and one scrivet (F) from inside the wheel arch as shown. Retain the scrivets. Remove one screw (E) from under the wheel arch, just behind the mudflap. Retain for later use.



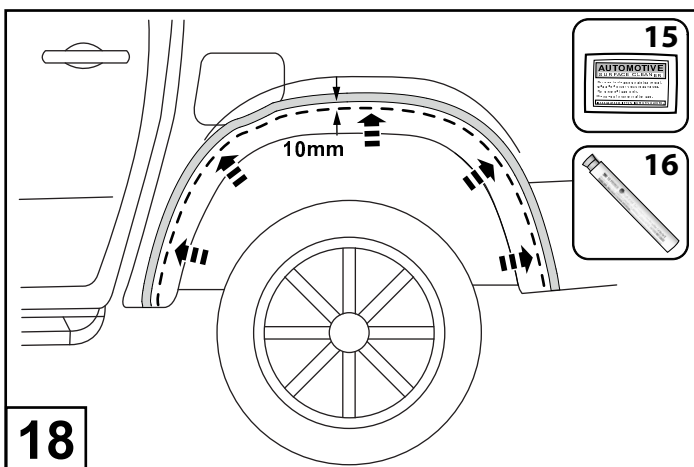
15 Where the rubber extrusion will adhere, clean the inside edge of each Rear Fender Flare (2) with Alcohol Wipe (15) and apply Primer (16). One Primer per pair of Flares.



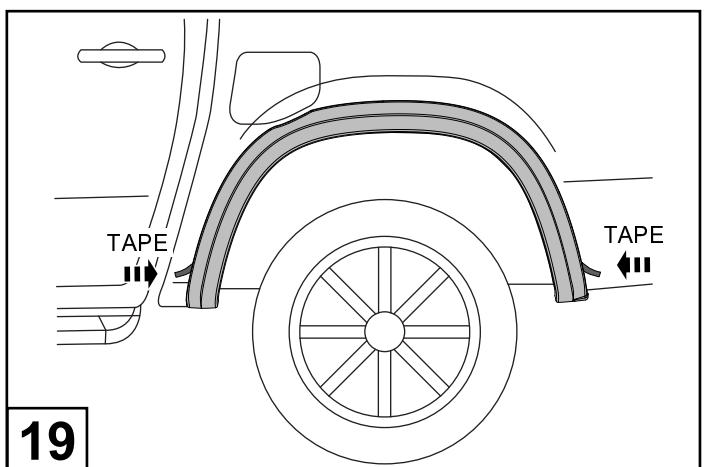
16 Remove approximately 50mm of the protective liner from the Extrusion (3). Fit the extrusion to the Rear Fender Flares (2) along the edge that comes in contact with the vehicle's body panel. Trim any unnecessary extrusion and discard.



17 Place and hold the flare against the car and get a second person to mask the border around the flare using masking tape.



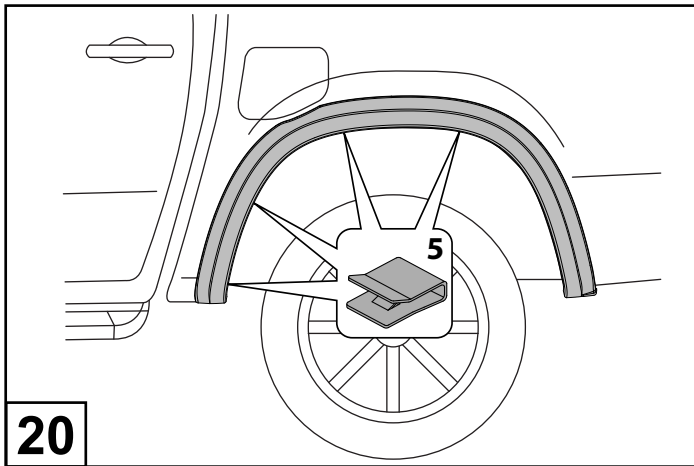
18 Remove the flare and use an Alcohol Wipe (15) to clean 10mm of the area inside side from the tape and apply a Primer Stick (16). One Primer per fender wheel arch.



19 Peel back red tape liner, about 50mm from each corner of the adhesive tape on the back of the Rear Fender Flare (2). Fit the flare to the vehicle as shown, aligning with the holes for the mudflap.

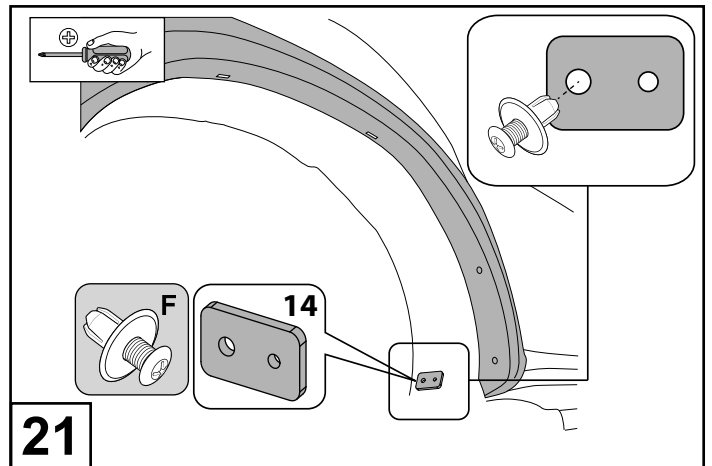
REAR FENDER FLARES INSTALLATION INSTRUCTIONS

FF911
717



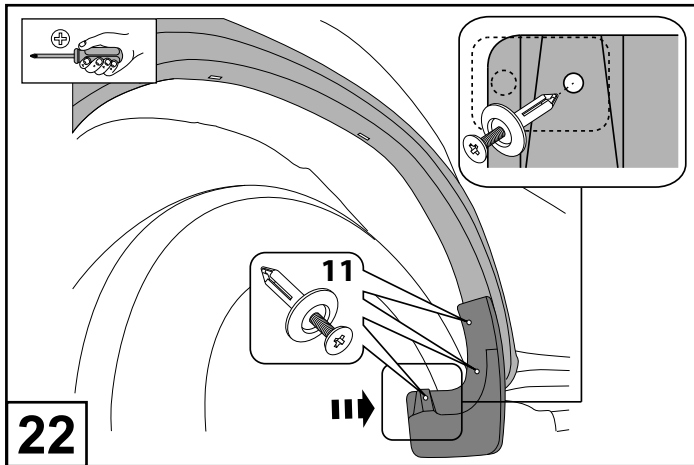
20

Fit the Narrow Clips (5) in positions shown, ensuring the notch in the clip locates securely into the slot in the Rear Fender Flare (2).



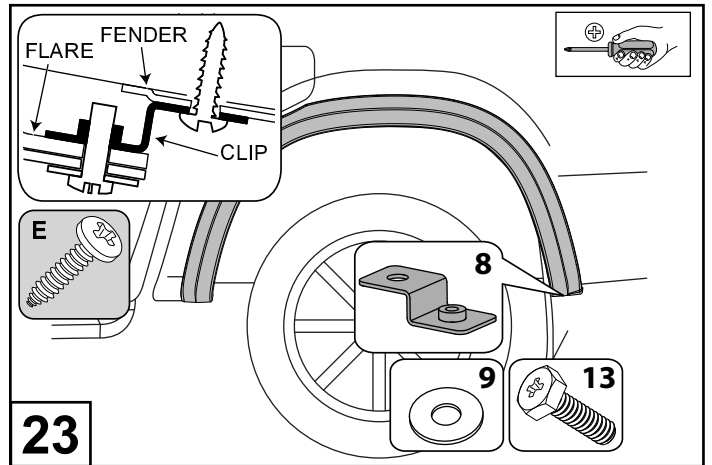
21

Using the retained scrivet (F), fix the Mudflap Bracket (14) to the wheel arch.



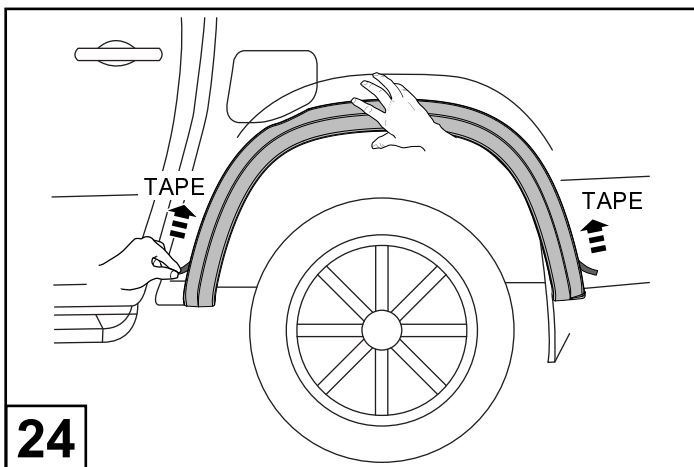
22

Secure the mudflap to the wheel arch with three provided Scrivets (11), with the Mudflap Bracket (14) in between as shown.



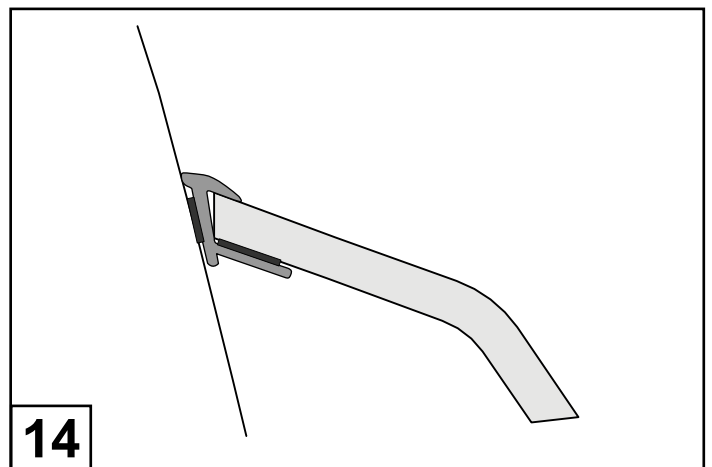
23

Screw Bottom Clip (8) to the fender using the existing screw (E). Fix the Rear Fender Flare (2) and mudflap to the Bottom Clip (8) using a Hex Head Screw (13) and a Washer (9).



24

Ensure that flares are aligned. Remove the tape liner. Apply firm pressure on the flare to ensure the tape is contacting the vehicle surface around the full perimeter of the flares.



14

Ensure the extrusion is firmly applied and flush with the vehicle.