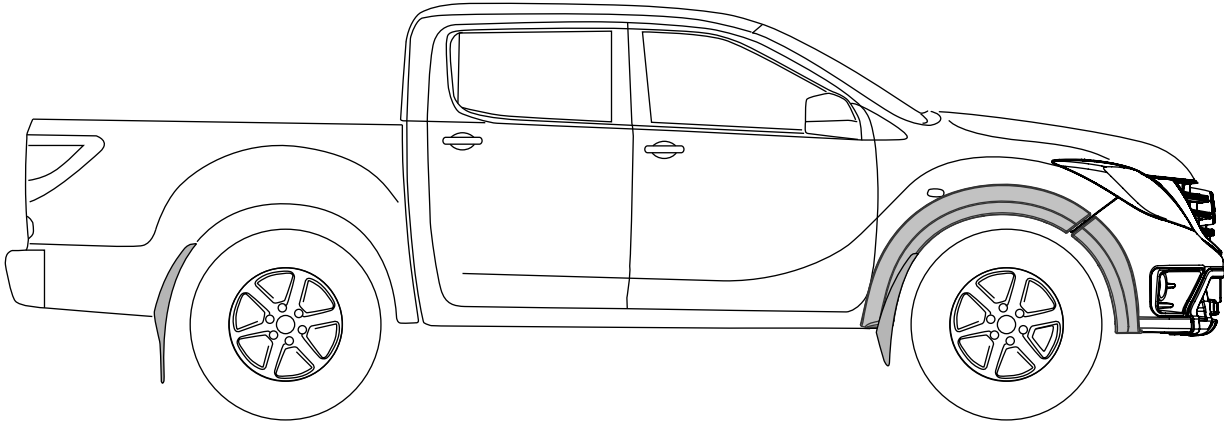


MAZDA BT-50

(October 2018 Production Onwards)

FRONT FENDER FLARES INSTALLATION INSTRUCTIONS

Installation Time: Approx. 45 Minutes



NOTES:

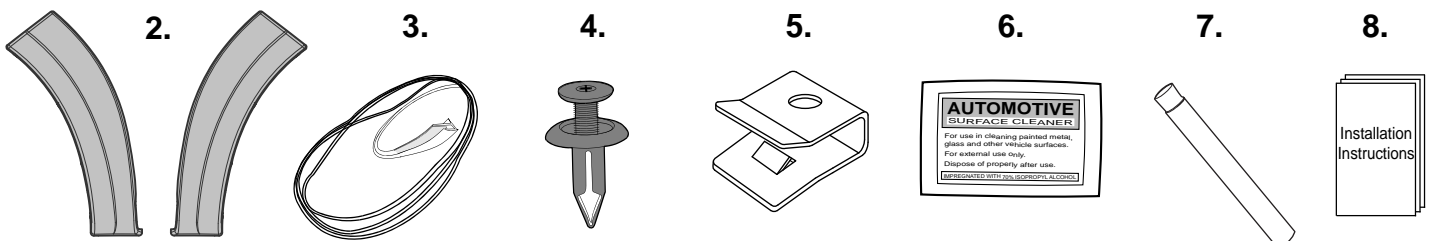
- Ensure that both left and right hand Fender Flares suit the profile of the vehicle. Note the areas where the Fender Flares come in contact with the vehicle.
- Before fitting Fender Flares remove any mouldings, strips or existing flares from the wheel arch. If there is a body side moulding, mark where the moulding is to be cut, alternatively the Fender Flares can be cut to go around the moulding. Be sure to allow enough room for the extrusion.

PAINTING INSTRUCTIONS:

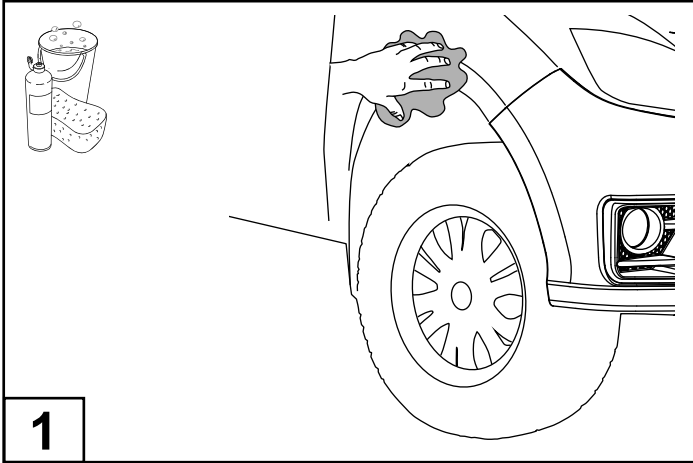
- ⚠ Warning: Do not fit trim edge extrusion or any of the hardware until paint is completely dry.**
- Spot Sand Fender Flares where required prior to painting, recommend 500 grit using an orbital type sander.
 - Prior to painting, clean all surfaces to be painted using clean water and a mild detergent, do not use lacquer thinner or any solvent based products. Wipe completely dry.
 - Best results will be achieved by wiping the areas to be painted with a tack rag just prior to painting.
 - Select a top coat and clear paint that is suitable for ABS (Acrylonitrile-Butadiene-Styrene).
 - Automotive paint systems, such as Acrylics or Two Packs, can be applied directly to the components. However, some paints may require a primer. If recommendations on paint specifications are not followed, cracking of the part or degradation to the material may result. In all paint systems, aromatic hydrocarbons and alkalis are best avoided to reduce damage to the material properties.
 - If using a paint system which requires baking, do not expose the product to temperatures above 70° C (155° F).
 - Allow a minimum of 8 hours after baking before installation on the vehicle.

COMPONENTS LIST

	NO.	COMPONENT	QTY
	1	Front Fender Flares (RHS & LHS)	2
	2	Front Bumper Flares (RHS & LHS)	2
	3	Extrusion	4.2m
	4	Scrivet	28
	5	Wide Metal Clip	4
	6	Alcohol Wipe	2
	7	Primer Stick	4
	8	Installation Instructions	1

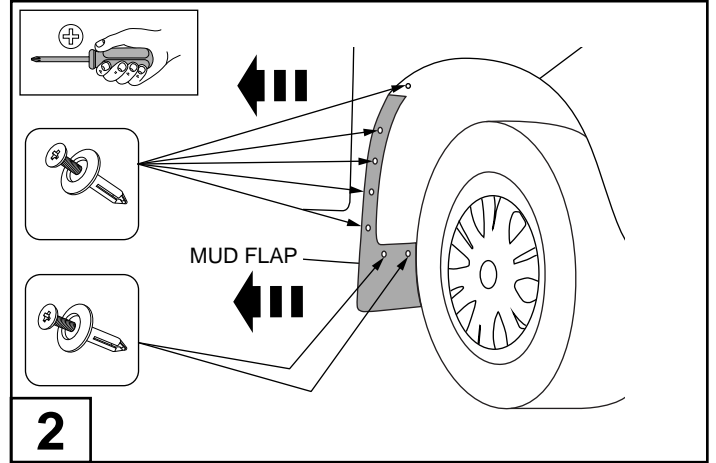


MAZDA BT-50 - FRONT FENDER FLARE



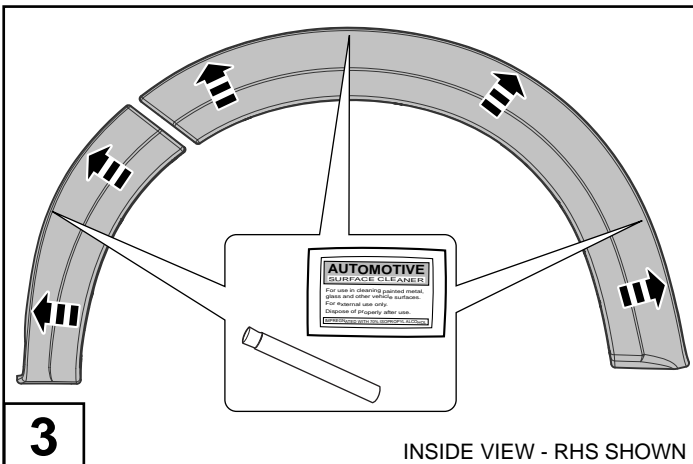
1

Wash the areas of contact on the vehicle and wipe dry both the vehicle and the Fender Flares with a clean cloth. Ensure inside of Fender Flares where extrusion will be attached is clean.



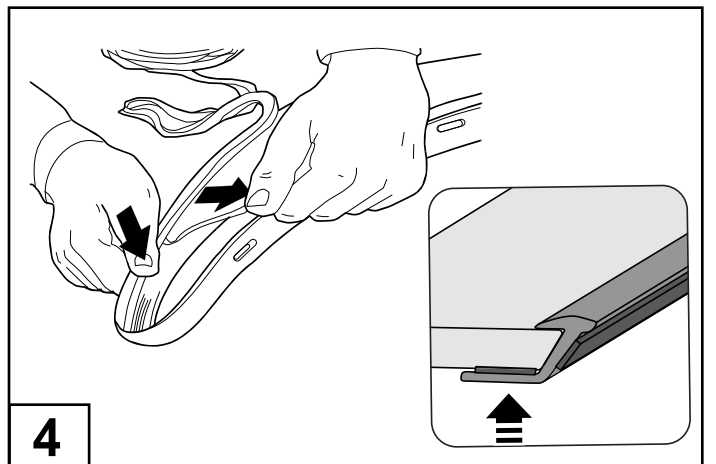
2

Remove the mud flaps by removing and retaining the 7 scrivenets from inside the wheel arch as shown. **NOTE:** Replacement scrivenets are supplied, if any scrivenets are damaged upon removing from the vehicle.



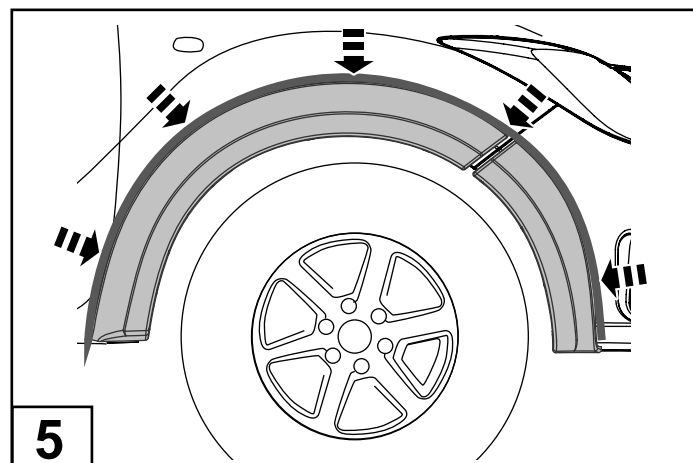
3

Using alcohol wipe clean the inside edge of each fender flare where the extrusion will adhere. Apply primer stick to the inside edge where the extrusion will adhere. Allow 3min for the primer to dry.



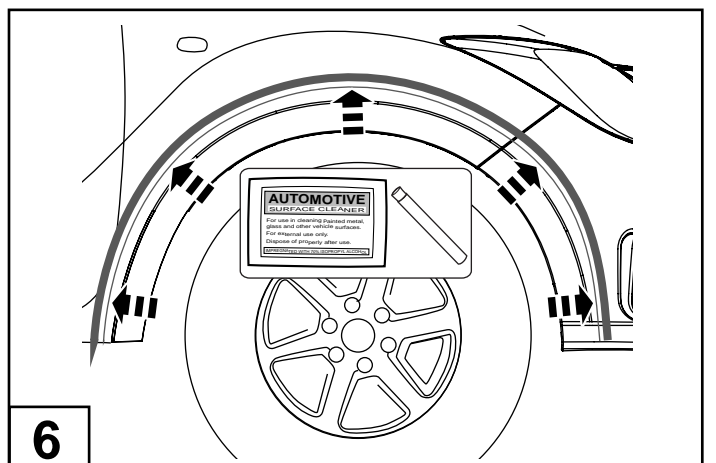
4

Pulling at right angles to the extrusion, remove the liner from the extrusion in small portions and apply thumb pressure to ensure that it adheres to the Fender Flares. Trim any unnecessary extrusion and discard.



5

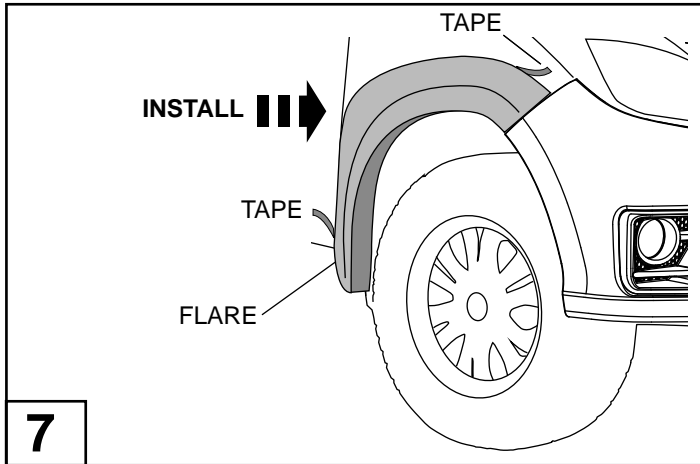
Test fit the fender flares to the vehicle and while holding the flares, apply masking tape to the fender just above the flares top edge. Remove the flares.



6

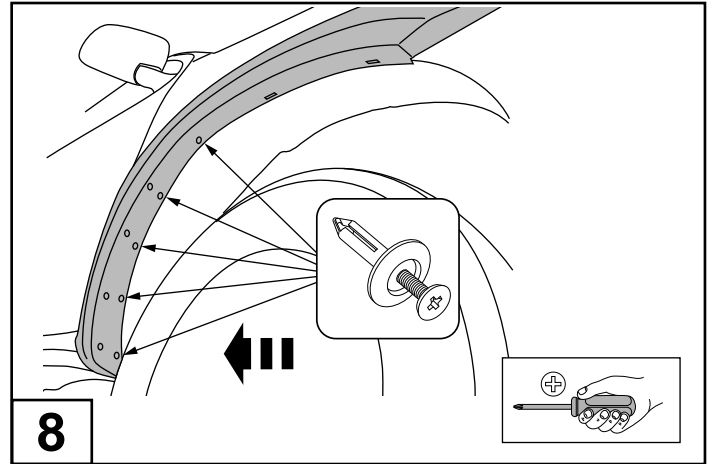
Using alcohol wipe clean the fender just below the tape, where the extrusion will adhere. Apply primer stick to the cleaned surface up to 10mm below the tape. Allow 3min for the primer to dry. Remove the tape.

MAZDA BT-50 - FRONT FENDER FLARE



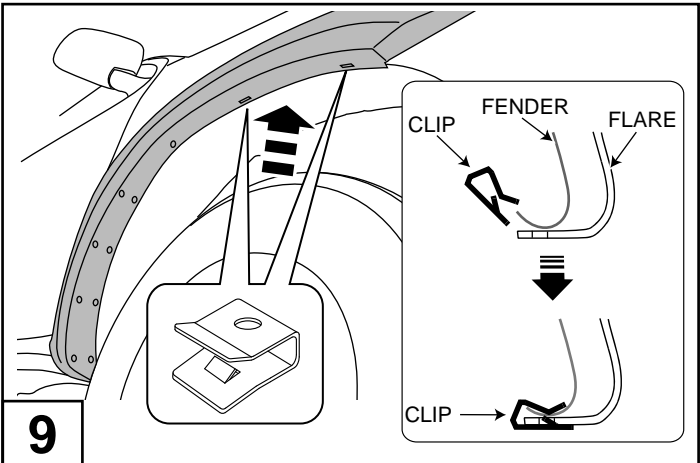
7

Peel back red tape liner, about 50mm from each corner of the adhesive tape on the back of the fender flare extrusion. Fit the flare to the vehicle as shown.



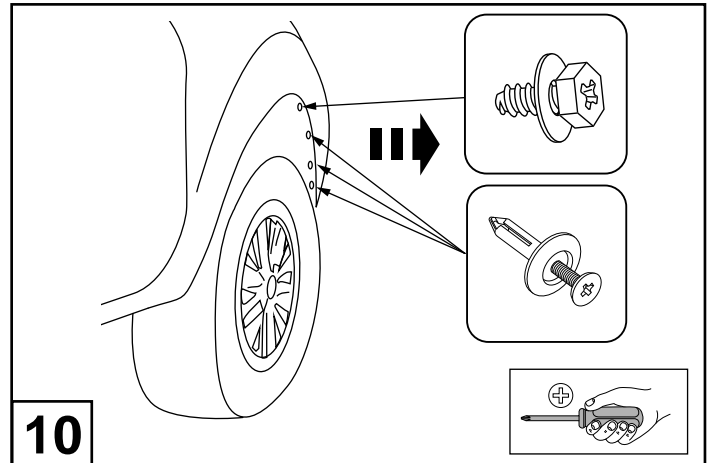
8

Install 5 wheel arch scrivets onto the flare as shown. While pressing and holding the flare in position of best fit.



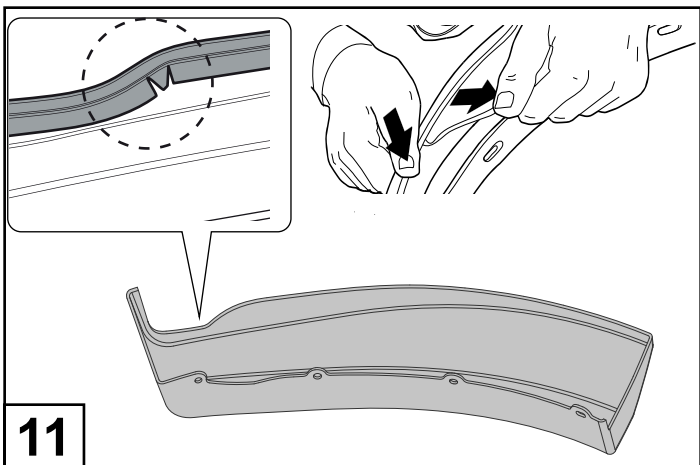
9

Install two wide metal clips at an angle, by pushing the clip on to the fender lip and then rotate downwards, as shown.



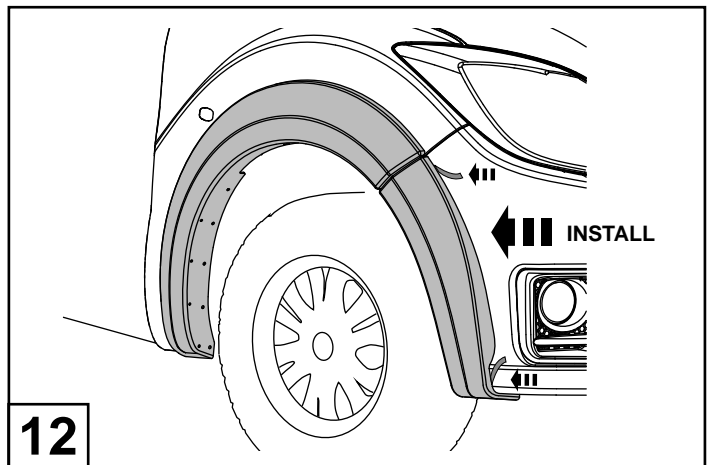
10

Remove 3 scrivets and 1 screw from the wheel arch on the front bumper.



11

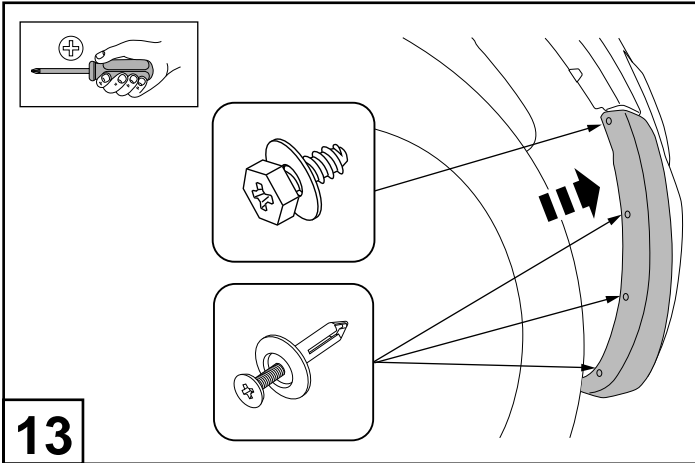
Pulling at right angles to the extrusion, remove the liner from the extrusion in small portions and apply thumb pressure to ensure that it adheres to the Fender Flares. Cut few triangle relief cuts in the extrusion (on the inside edge) to help the Fender Flare Extrusion conform to the shape of the flare as shown.



12

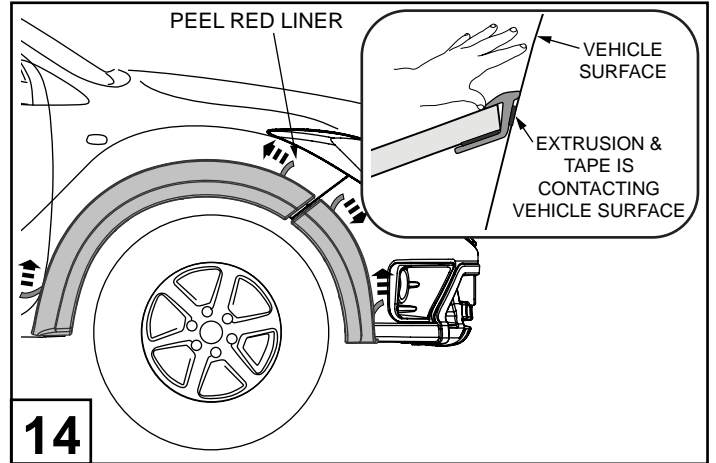
Peel back red tape liner, about 50mm from each corner of the adhesive tape on the back of the fender flare. Fit the front quarter flare to the vehicle as shown

MAZDA BT-50 - FRONT FENDER FLARE



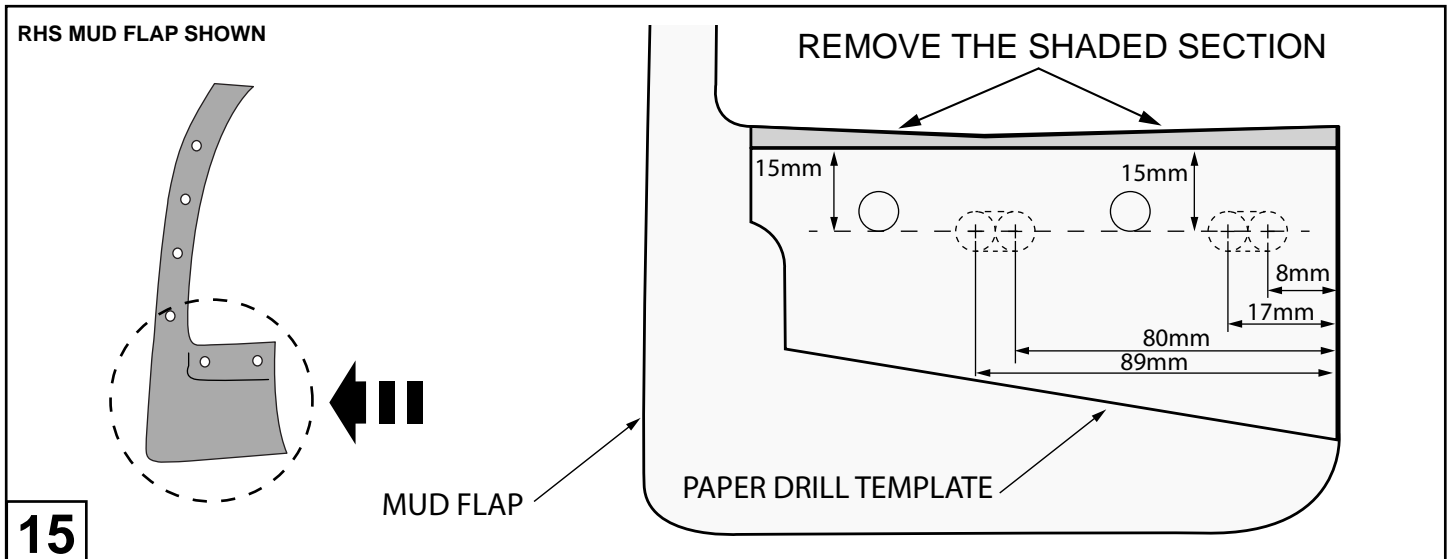
13

Secure the fender flare to the wheel arch with 3 scrivets and 1 screw as shown.



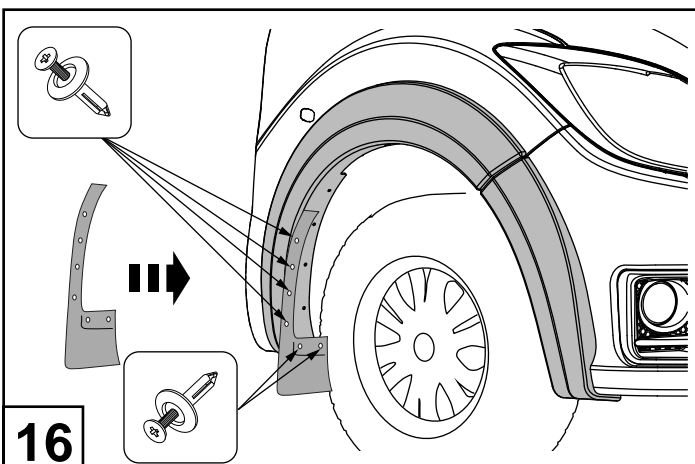
14

Ensure that flares are aligned. Remove the tape liner. Using your thumb and/or fingers apply firm pressure on the extrusion to ensure the extrusion and the tape is contacting the vehicle surface around the full perimeter of the flares.



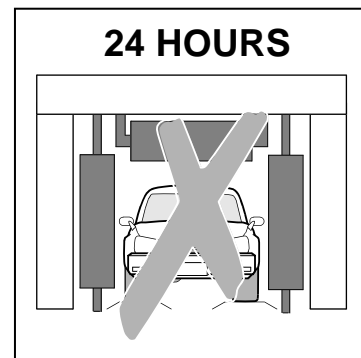
15

Print 1:1 scale paper drill template on the last page. Cut it out and stick to the back of the front mud flap using the 2 existing holes to position the template. Trim the top edge of the mud flap as shown, using tin snips. Mark the 4 slot centres as shown from the inside edge and drill with 8mm drill. Join two holes to create slot using die grinder or drill. Repeat the same on the LHS mud flap.



16

Secure the mud flap to the fender flare with 6 scrivets as shown.



PAPER DRILL TEMPLATE FOR THE FRONT MUD FLAPS

