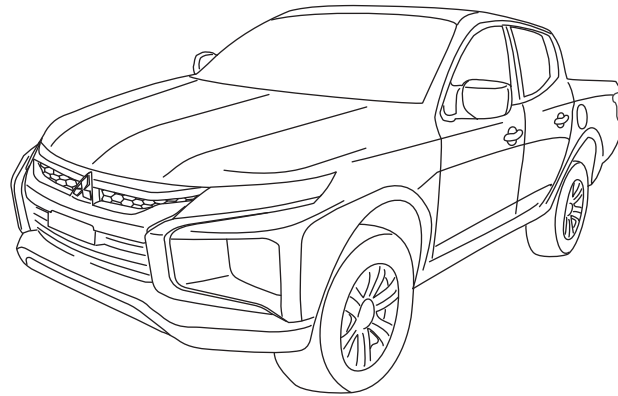


# MITSUBISHI TRITON MY19

## FENDER FLARES

### INSTALLATION INSTRUCTIONS



Installation Time: Approx. 90 Minutes

**NOTES:**

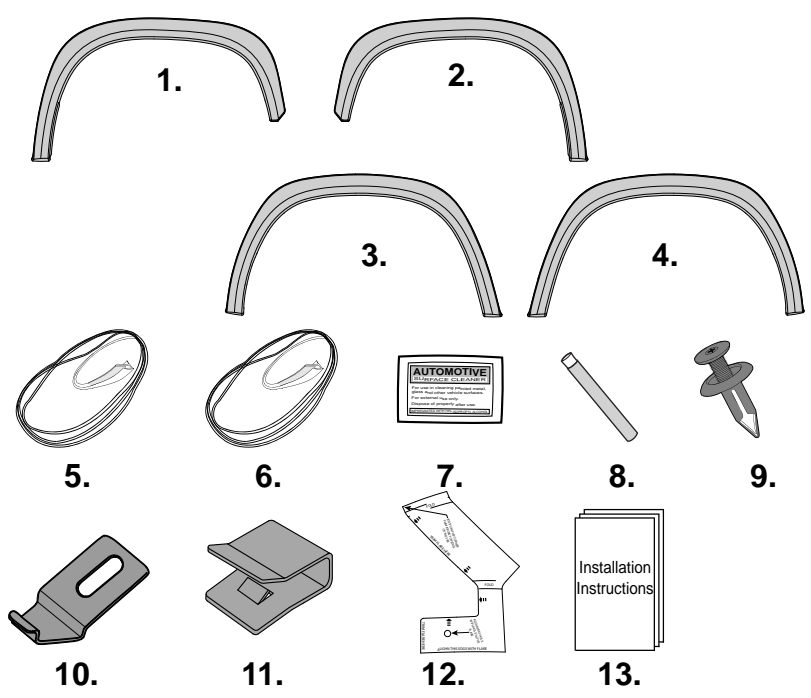
- Vehicles fitted with Front Protection Bar will require front flares to be trimmed as shown on page 7.
- The pinch weld seal for front flares is not provided.
- Ensure that both left and right hand Fender Flares suit the profile of the vehicle. Note the areas where the Fender Flares come in contact with the vehicle.
- Before fitting Fender Flares remove any mouldings, strips or existing flares from the wheel arch. If there is a body side moulding, mark where the moulding is to be cut, alternatively the Fender Flares can be cut to go around the moulding. Be sure to allow enough room for the extrusion.

**PAINTING INSTRUCTIONS:**

**⚠ Warning: Do not fit trim edge extrusion or any of the hardware until paint is completely dry.**

- Spot Sand Fender Flares where required prior to painting, recommend 500 grit using an orbital type sander.
- Prior to painting, clean all surfaces to be painted using clean water and a mild detergent, do not use lacquer thinner or any solvent based products. Wipe completely dry.
- Best results will be achieved by wiping the areas to be painted with a tack rag just prior to painting.
- Select a top coat and clear paint that is suitable for ABS (Acrylonitrile-Butadiene-Styrene).
- Automotive paint systems, such as Acrylics or Two Packs, can be applied directly to the components. However, some paints may require a primer. If recommendations on paint specifications are not followed, cracking of the part or degradation to the material may result. In all paint systems, aromatic hydrocarbons and alkalis are best avoided to reduce damage to the material properties.
- If using a paint system which requires baking, do not expose the product to temperatures above 70° C (155° F).
- Allow a minimum of 8 hours after baking before installation on the vehicle.

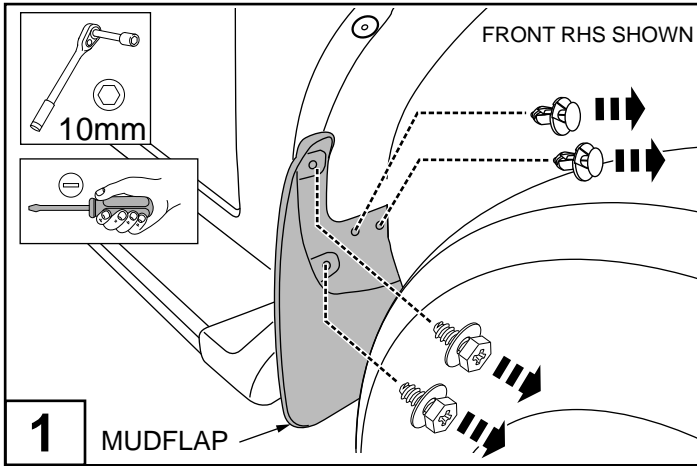
### COMPONENTS LIST



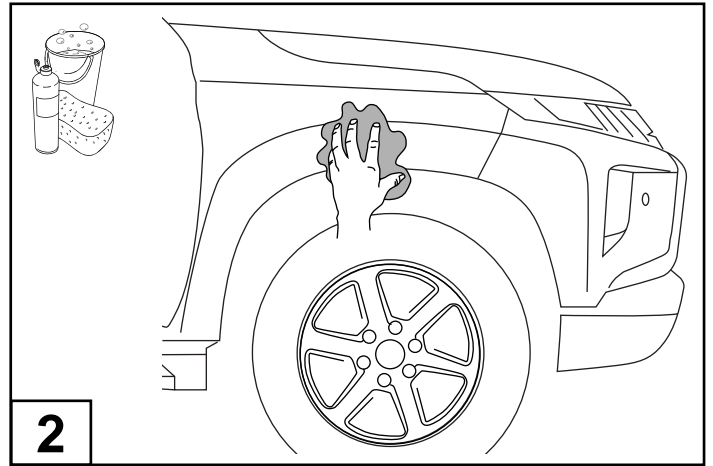
NO.	COMPONENT	QTY FRONT	QTY REAR
1	Front Fender Flare RHS	1	-
2	Front Fender Flare LHS	1	-
3	Rear Fender Flare RHS	-	1
4	Rear Fender Flare LHS	-	1
5	Front Extrusion (MISC0129)	4m	-
6	Rear Extrusion (MISC0129)	-	5m
7	Alcohol Wipe (MISC0052)	2	2
8	Primer Stick (MISC1365)	4	4
9	Plastic Scrivet (FAST0086)	4	4
10	G-clip (CLIP0896PC)	8	-
11	Snap clip (CLIP1074PC)	-	2
12	Trim Template (only for FPB)	1	-
13	Installation Instruction	1	1

# TRITON - FRONT FENDER FLARE

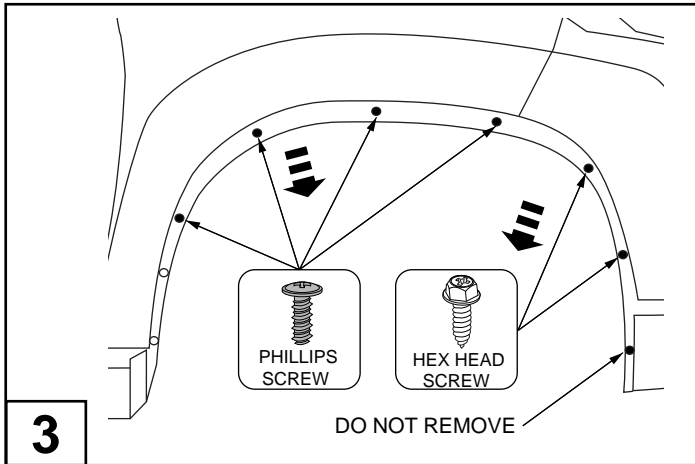
FOR VEHICLES FITTED WITH FRONT PROTECTION BAR, REFER TO PAGE 7 FOR FLARES TRIM



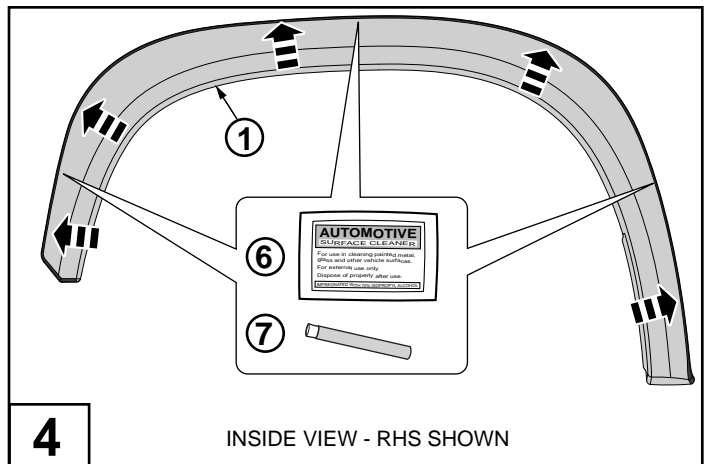
1 Remove and retain the 2 hex head screws holding mudflap and 2 plastic scrivenets as shown (RHS). Remove and retain the mudflap.



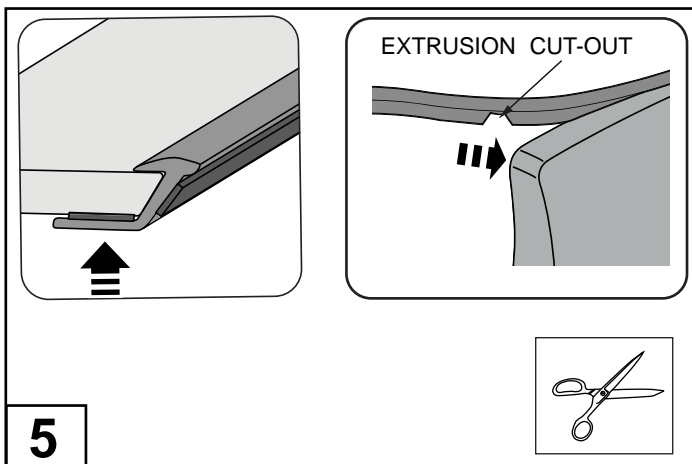
2 Wash the areas of contact on the vehicle and wipe dry both the vehicle and the Fender Flares with a clean cloth. Ensure inside of Fender Flares where extrusion will be attached is clean.



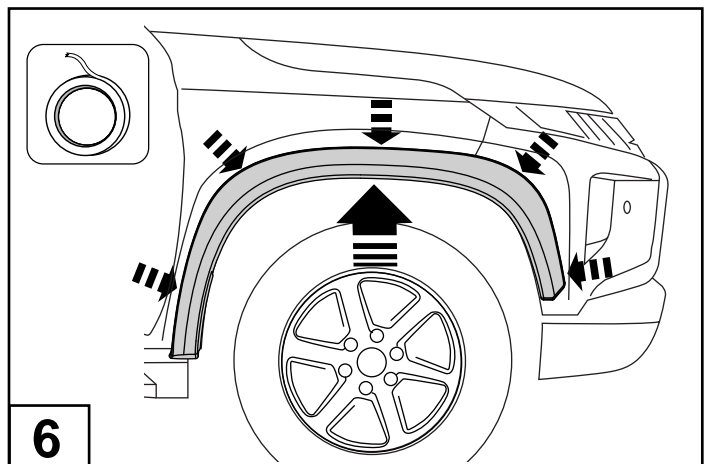
3 Remove and retain the 4 Phillips head screws and 2 hex head screws from the guard as shown. Note: do not remove the last hex head screw at the front as shown.



4 Using alcohol wipe clean the inside edge of each fender flare where the extrusion will adhere. Apply primer stick to the inside edge where the extrusion will adhere. Allow 3min for the primer to dry.

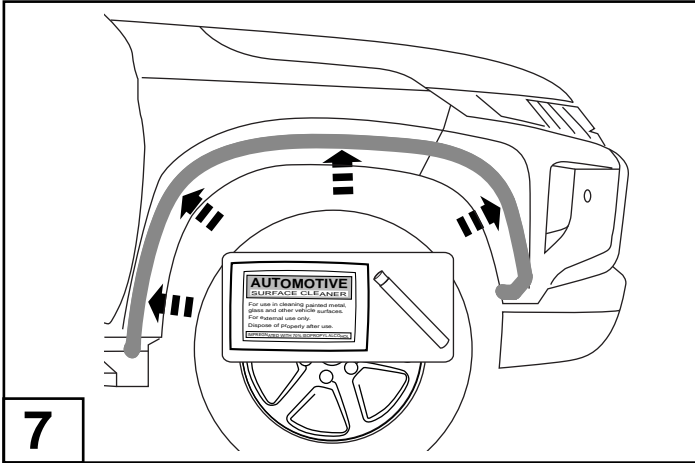


5 Pulling at right angles to the extrusion, remove the liner from the extrusion in small portions and apply thumb pressure to ensure that it adheres to the Fender Flares. Notch the inside lip of the Extrusion to help it conform to the tight corners around the front bottom section.

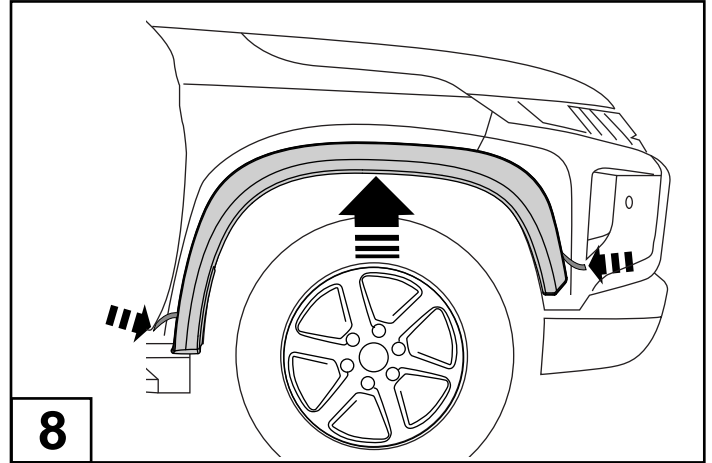


6 Test fit the fender flares to the vehicle and while holding the flares, apply masking tape to the fender just above the flares top edge. Remove the flares.

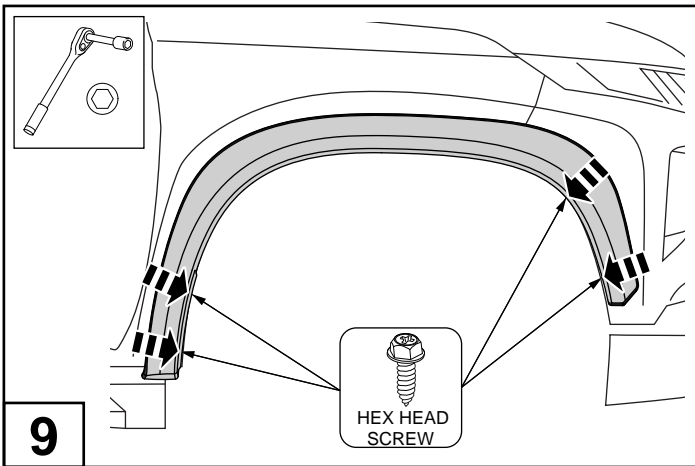
## TRITON - FRONT FENDER FLARE



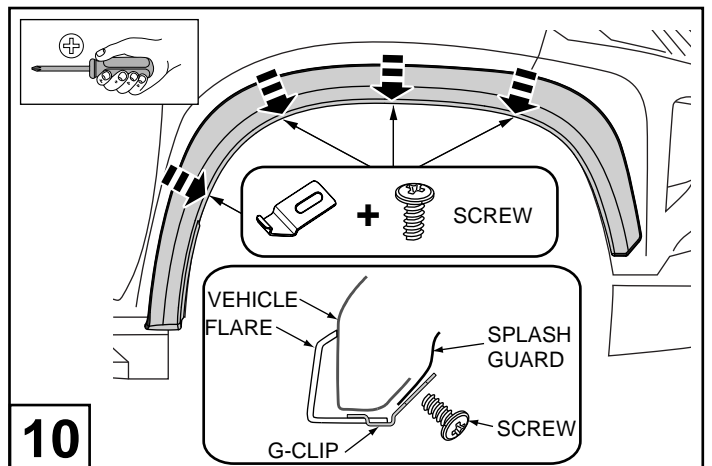
7 Using alcohol wipe clean the fender just below the tape, where the extrusion will adhere. Apply primer stick to the cleaned surface up to 10mm below the tape. Allow 3min for the primer to dry. Remove the tape.



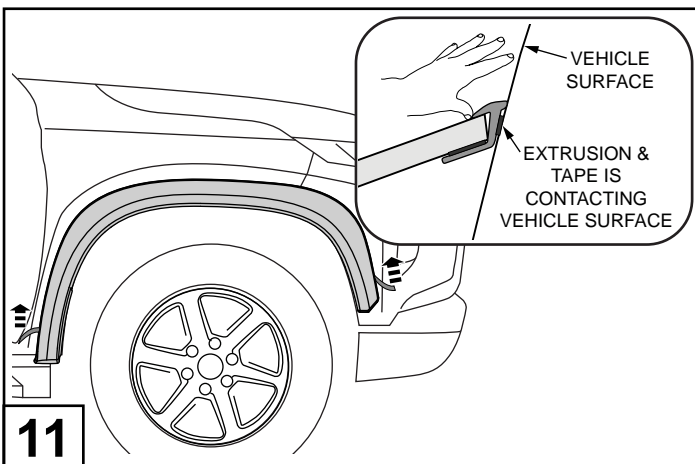
8 Peel back red tape liner, about 50mm from each corner of the adhesive tape on the back of the fender flare. Fit the front flare to the vehicle as shown. Note: push the flare upwards till it sits firm on the wheel arch.



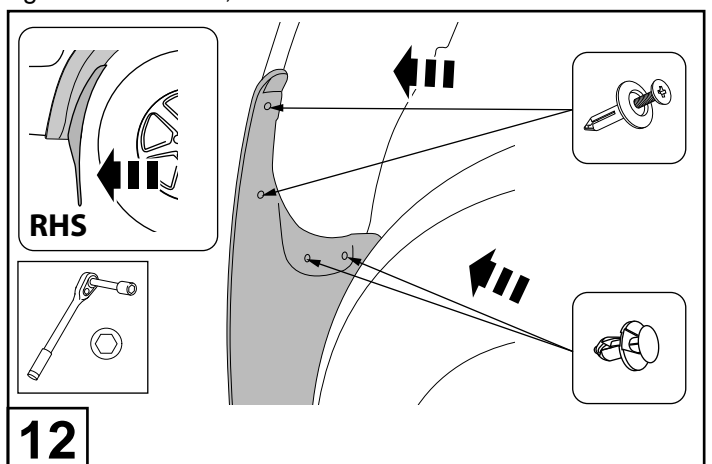
9 Secure the fender flare to the wheel arch with 4 hex head screws as shown.



10 Fit the G-Clip to the slot in the fender flare and secure with Phillips head screw into the inner wheel arch. While pressing and holding the flare in position of best fit, proceed to tighten the screws, fit in 4 locations as shown.

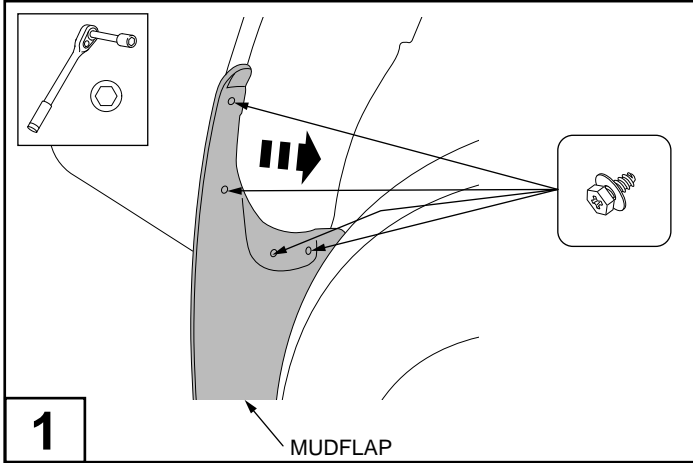


11 Remove the tape liner and apply firm pressure to ensure the tape is contacting the car body.

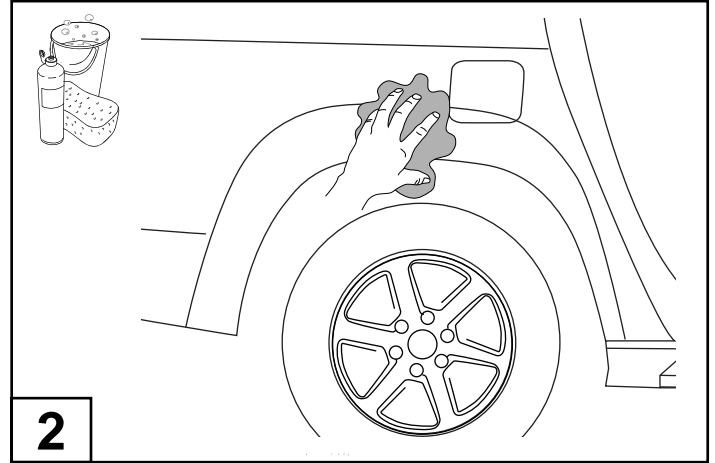


12 Modify the mudflap as shown on the last page before reinstalling to the vehicle. Reattach the mudflap to the fender flare using 2 scrivets and to the car body, using 2 previously removed plastic scrivets as shown.

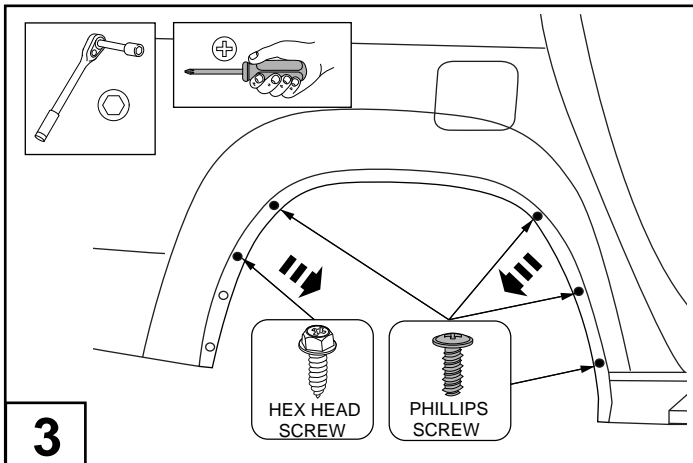
## TRITON - REAR FENDER FLARE



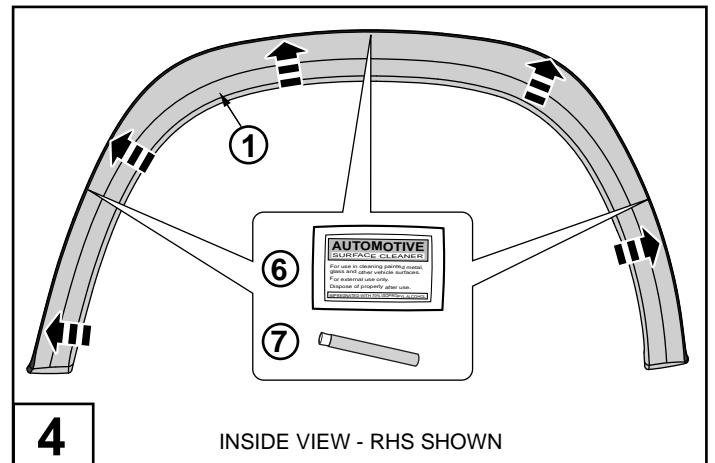
**1** Remove the rear mudflap by removing and retaining the 4 hex head screws and mudflap as shown.



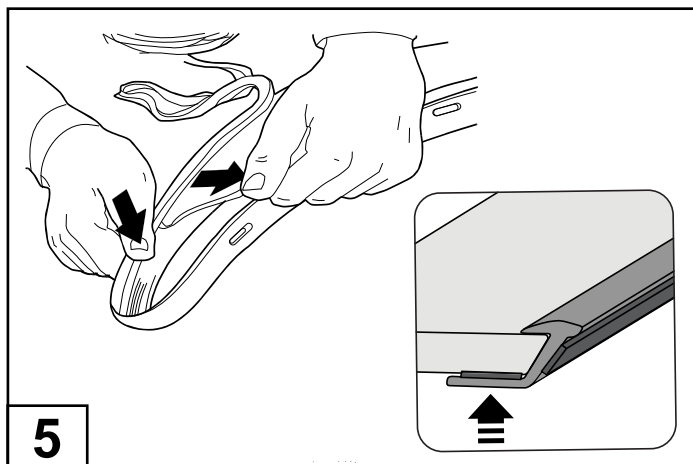
**2** Wash the areas of contact on the vehicle and wipe dry both the vehicle and the fender flares with a clean cloth. Ensure inside of fender flares where extrusion will be attached is clean.



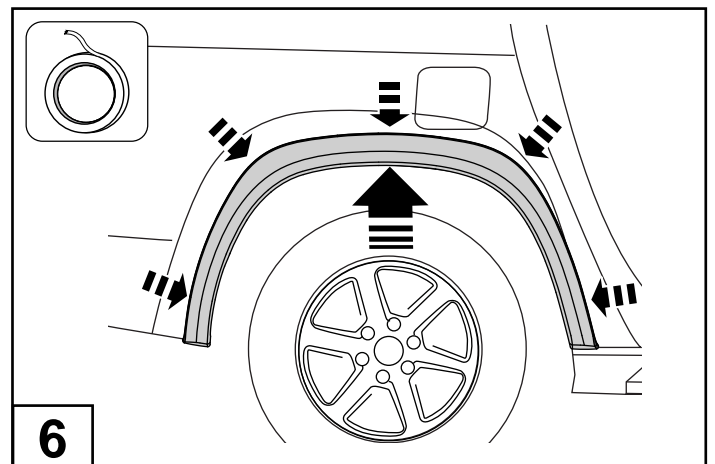
**3** Remove and retain the 4 Phillips head screws and 1 hex head screws from the guard as shown.



**4** Using alcohol wipe clean the inside edge of each fender flare where the extrusion will adhere. Apply primer stick to the inside edge where the extrusion will adhere. Allow 3min for the primer to dry.

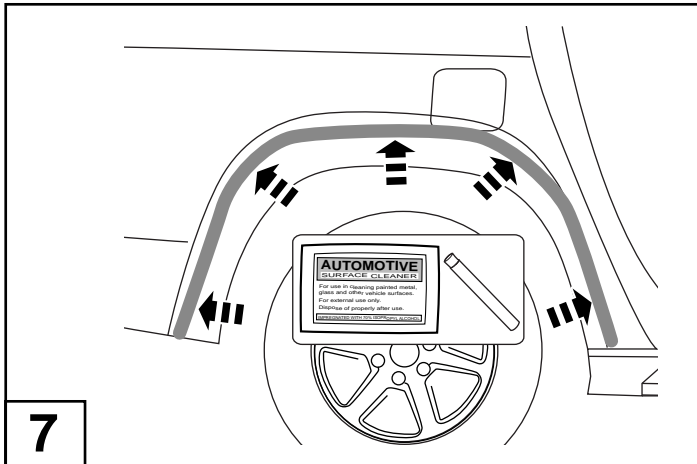


**5** Pulling at right angles to the extrusion, remove the liner from the extrusion in small portions and apply thumb pressure to ensure that it adheres to the Fender Flares. Trim any unnecessary extrusion and discard.



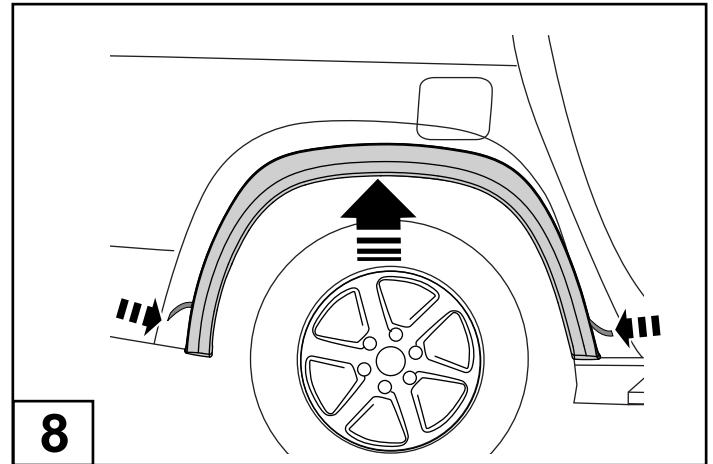
**6** Test fit the fender flare to the vehicle and while holding the flares, apply masking tape to the fender just above the flares top edge. Remove the flares.

## TRITON - REAR FENDER FLARE



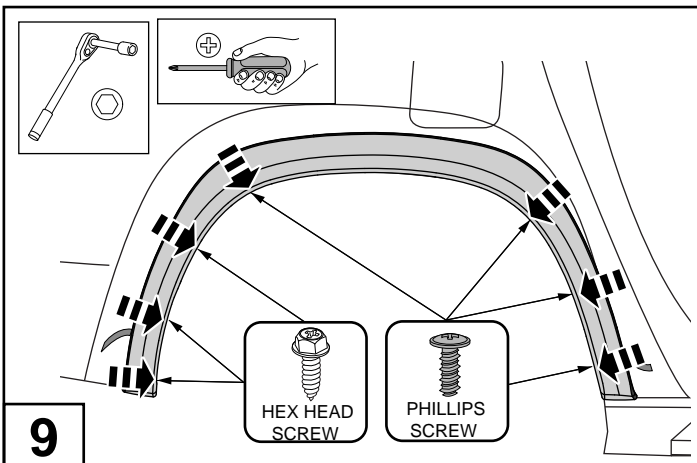
7

Using alcohol wipe clean the fender just below the tape, where the extrusion will adhere. Apply primer stick to the cleaned surface up to 10mm below the tape. Allow 3min for the primer to dry. Remove the tape.



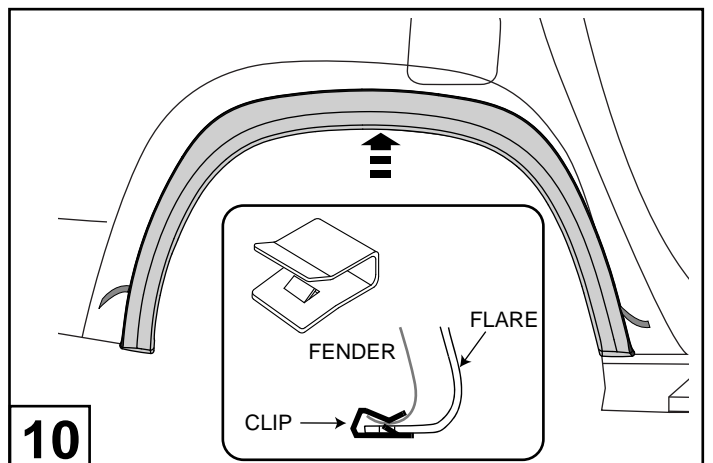
8

Peel back red tape liner, about 50mm from each corner of the adhesive tape on the back of the fender flare. Fit the rear flare to the vehicle as shown. Note: push the flare upwards till it sits firm on the wheel arch.



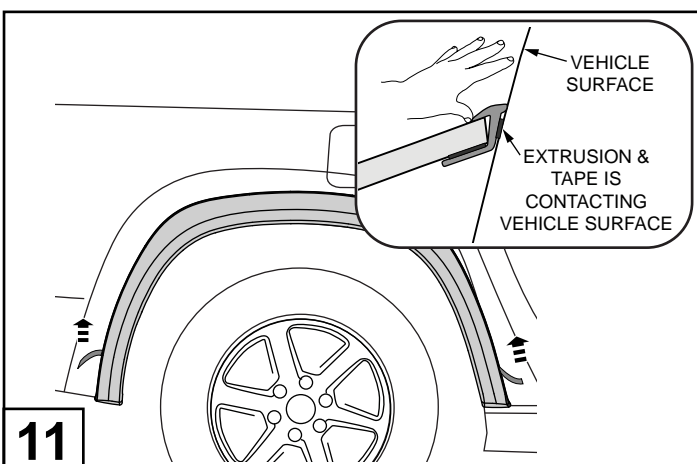
9

Secure the fender flare to the wheel arch with 3 hex head screws and 4 Phillips head screws as shown.



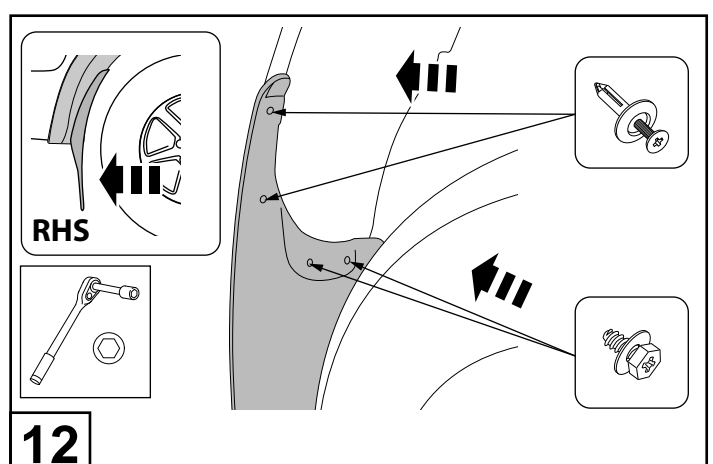
10

Secure the middle of the fender flare to the wheel arch using 1 small metal clip as shown.



11

Remove the tape liner and apply firm pressure to ensure the tape is contacting the car body.

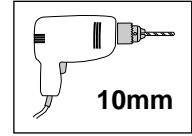
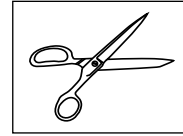
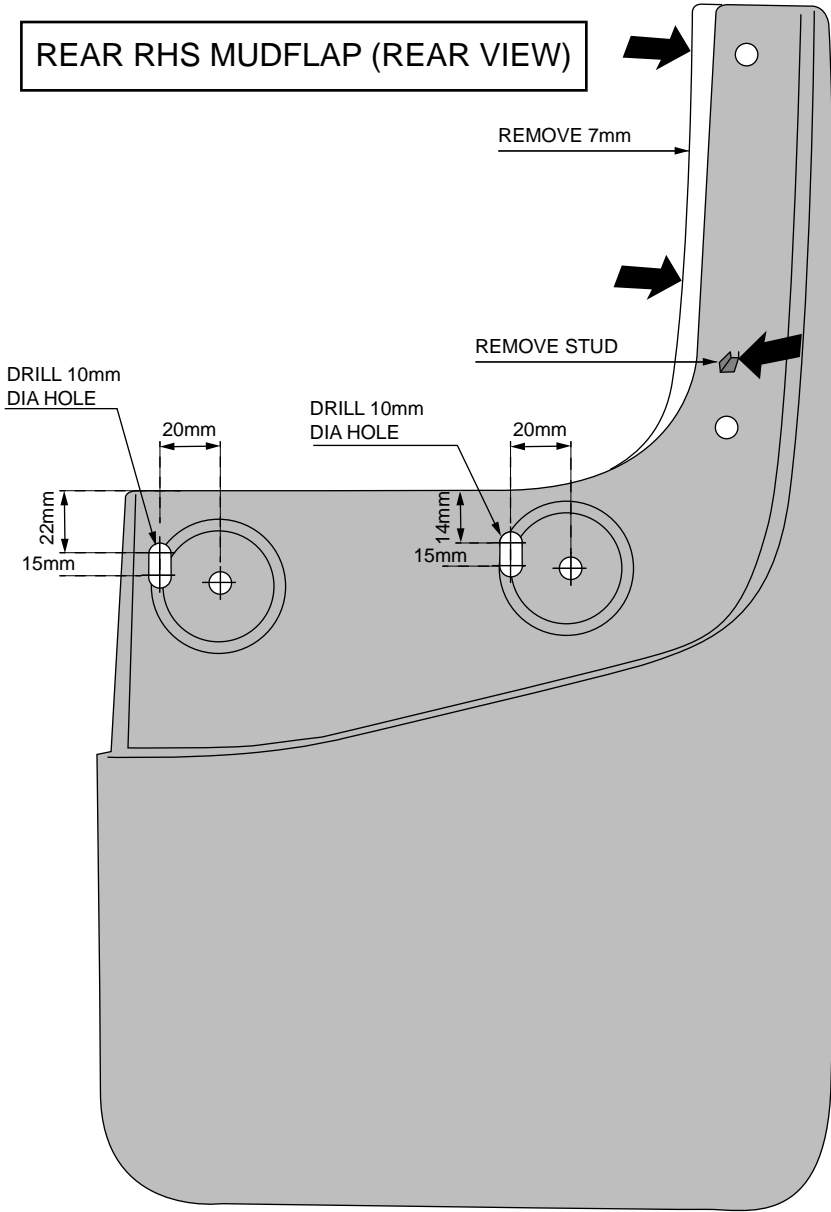


12

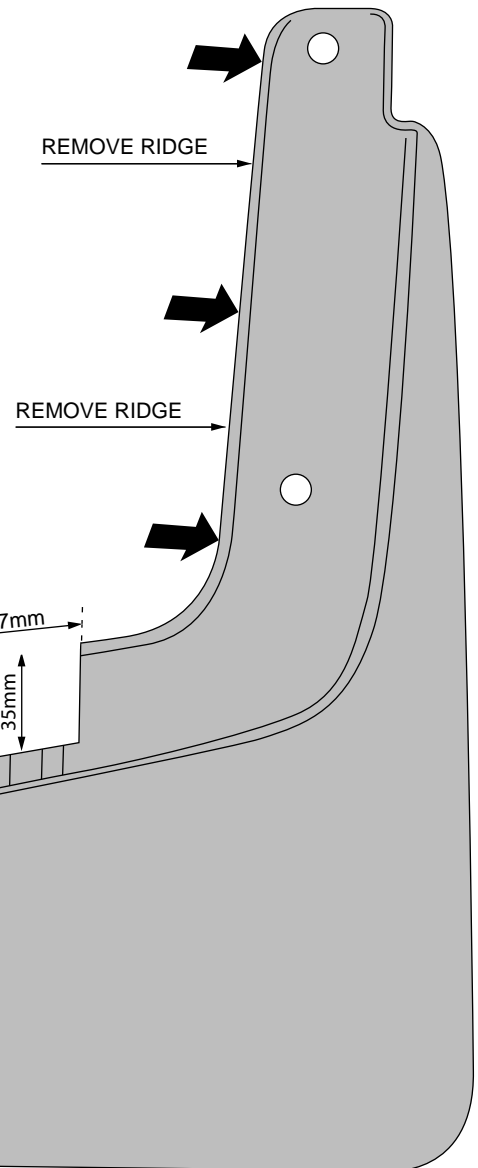
Modify the mudflap as shown on the last page before reinstalling to the vehicle. Reattach the mudflap to the fender flare using 2 screws and to the car body, using 2 previously removed hex head screws as shown.

# TRITON - MUDFLAP TRIM SECTION (NOT TO SCALE)

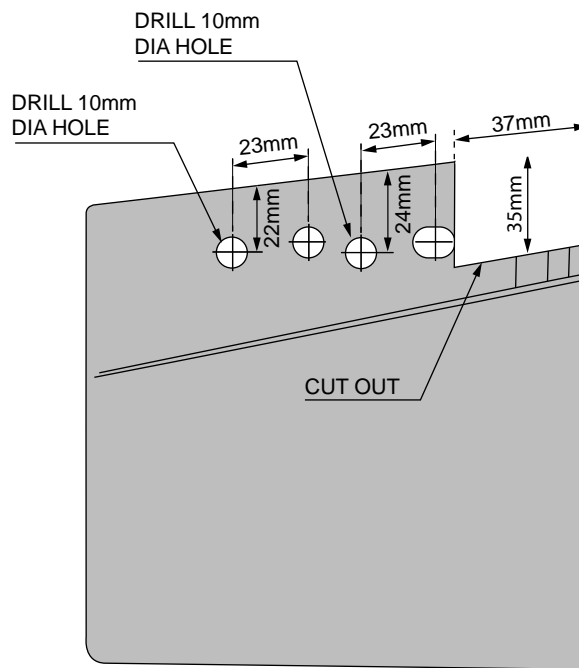
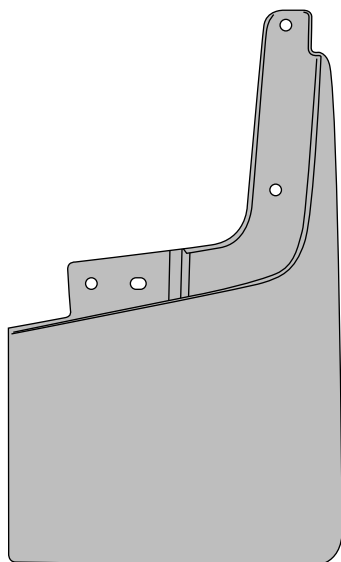
## REAR RHS MUDFLAP (REAR VIEW)



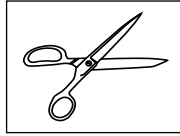
## FRONT RHS MUDFLAP (REAR VIEW)



## FRONT HI-SPEC RHS MUDFLAP (REAR VIEW)



TRITON - TRIM TEMPLATE FOR FRONT FLARES  
 (VEHICLES FITTED WITH FRONT PROTECTION BAR ONLY)

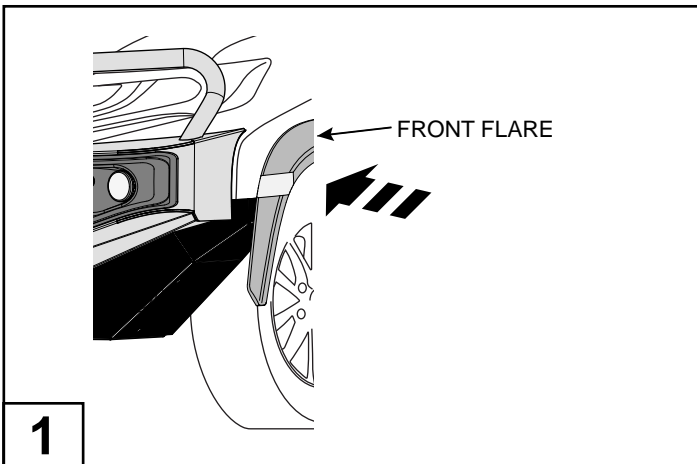
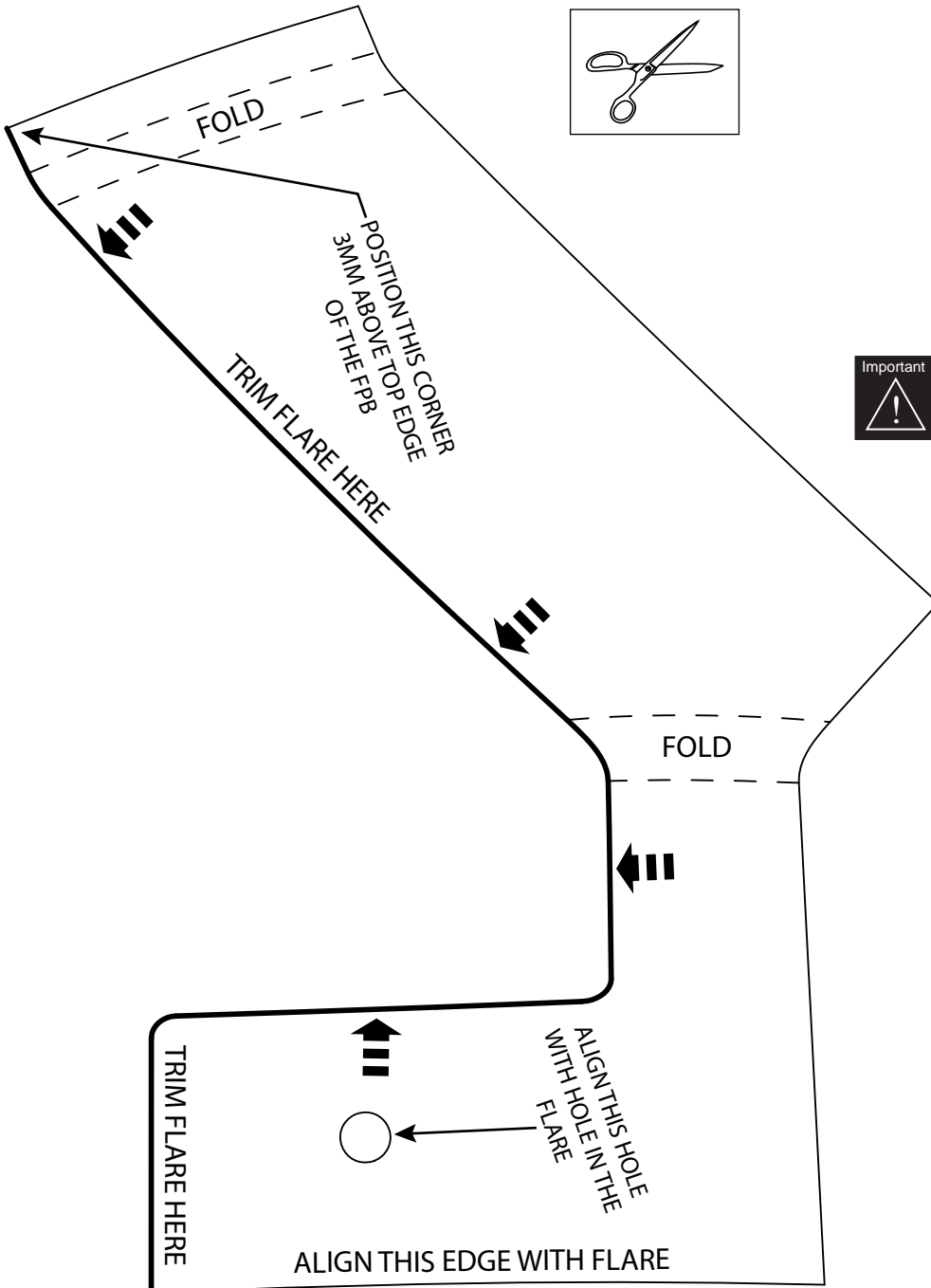


Scale: 1:1

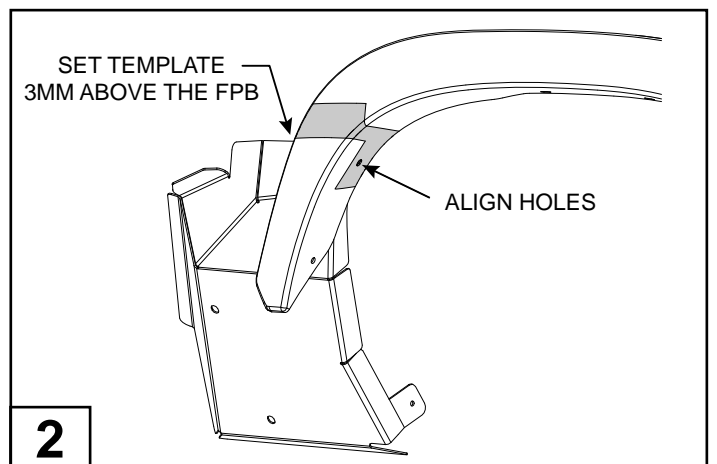
50mm

50mm

**Important** Always confirm the length of the 50mm marker before cutting out the templates.



Fit the front left flare to the vehicle and position the trim template on the flare following the aligning printed on the template.



Mark the trim line and trim the flare using Jigsaw. Clean the edge and cover with a pinch weld seal (not provided). Repeat for RHS.