

**FORD EVEREST 2016+ →**

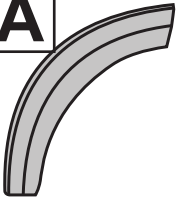
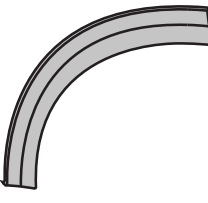
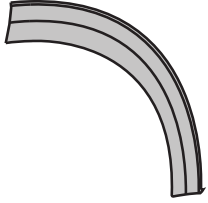
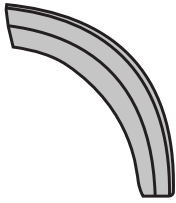

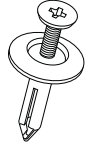

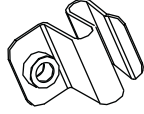
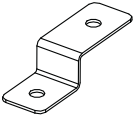
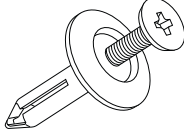
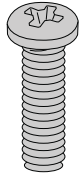
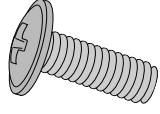
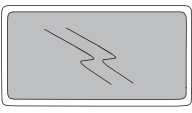
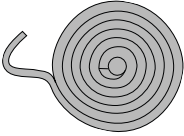
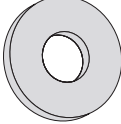


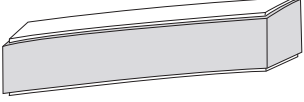
**NOTES:**

- Ensure that both left and right hand Fender Flares suit the profile of the vehicle. Note the areas where the Fender Flares come in contact with the vehicle.
- Before fitting Fender Flares remove any mouldings, strips or existing flares from the wheel arch. If there is a body side moulding, mark where the moulding is to be cut, alternatively the Fender Flares can be cut to go around the moulding. Be sure to allow enough room for the extrusion.
- Read instructions carefully. This product must be installed exactly as specified in these instructions. Failure to do so may result in improper fit and/or retention.

**TOOLS REQUIRED**

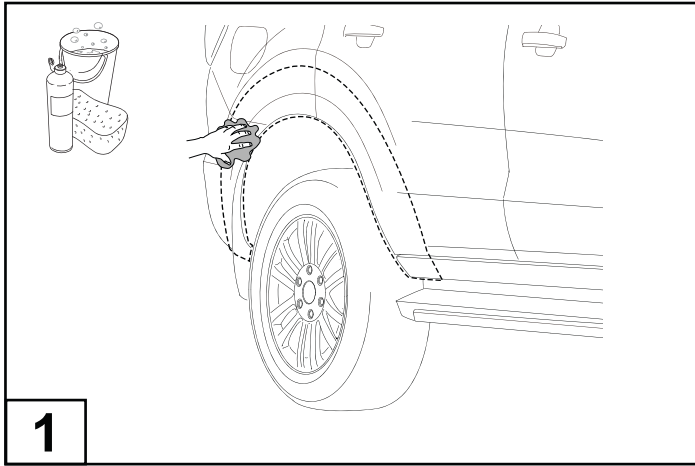
- Mild Soapy Water & Clean Cloths.
- Phillips head Screwdriver.
- Non Permanent Marker / Metal Scribe.
- Steel Ruler.
- Scissors or Sharp Knife.
- Masking Tape.
- Drill Bit - 6mm

**COMPONENTS LIST**

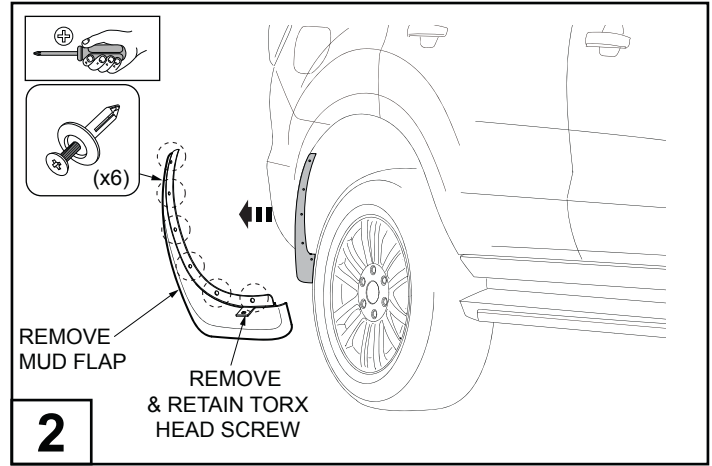
|   |   |   |  |
|---|---|---|--|
| <p><b>A</b></p>  <p>LHS x1</p>              | <p><b>B</b></p>  <p>RHS x1</p>         | <p><b>C</b></p>  <p>LHS x1</p>          | <p><b>D</b></p>  <p>RHS x1</p>        |
| <p><b>E</b> MISC0052</p>  <p>x3</p>      | <p><b>F</b> FAST0086</p>  <p>x12</p> | <p><b>G</b> CLIP2446PC</p>  <p>x4</p> | <p><b>H</b> CLIP3175</p>  <p>x8</p> |
| <p><b>I</b> CLIP3964PC</p>  <p>x2</p>    | <p><b>J</b> FAST0429</p>  <p>x2</p>  | <p><b>K</b> SCRW0589-1</p>  <p>x8</p>  | <p><b>L</b> SCRW0736</p>  <p>x8</p> |
| <p><b>M</b> TAPE0011</p>  <p>x10</p>     | <p><b>N</b> TAPE0363</p>  <p>x1</p>  | <p><b>O</b> WASH0190</p>  <p>x8</p>   | <p><b>P</b> MISC1365</p>  <p>x3</p> |
| <p><b>Q</b> MISC4524</p>  <p>5.6M x1</p> | <p><b>R</b> MISC5369</p>  <p>x8</p>  |   |  |

06/05/21

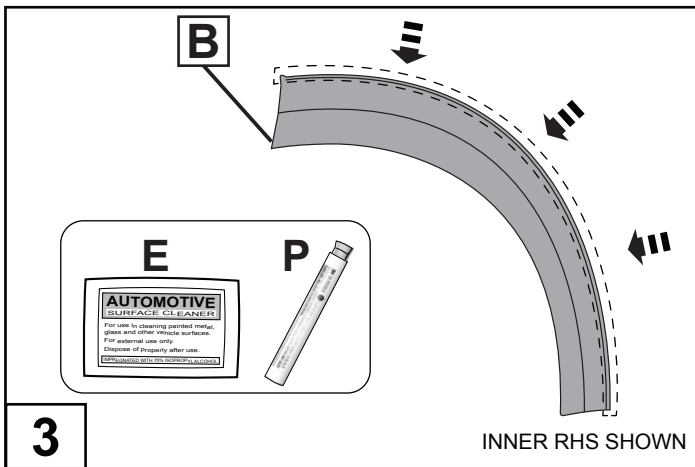
2/8



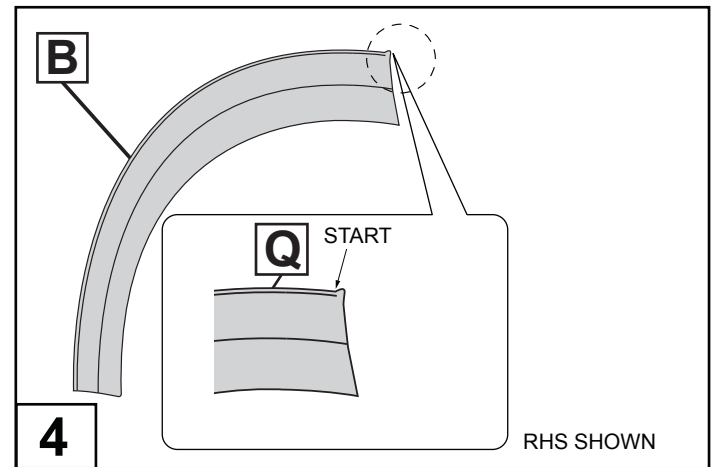
**1**  
Wash the areas of contact on the vehicle and wipe dry both the vehicle and the Fender Flares with a clean cloth. Ensure inside of Fender Flares where extrusion is attached is clean.



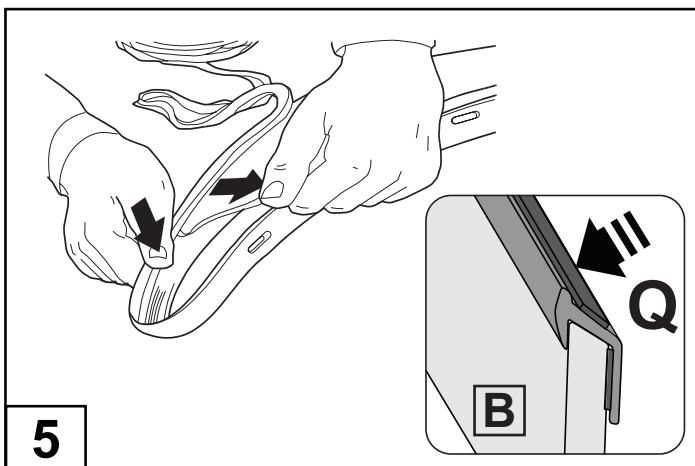
**2**  
Remove the mud flaps by removing and retaining the (6) scrifts from inside the wheel arch and one Torx head screw as shown.  
**NOTE:** Replacement scrifts are supplied in case scrifts are damaged upon removing from the vehicle.



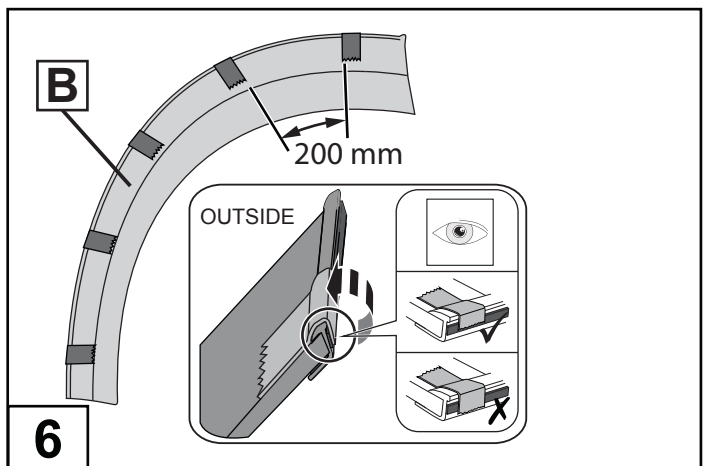
**3**  
Clean the inside edge of the Rear Fender Flare (B) where the rubber extrusion will adhere with the Alcohol Wipe (E) and prime with the Primer Stick (P) supplied.



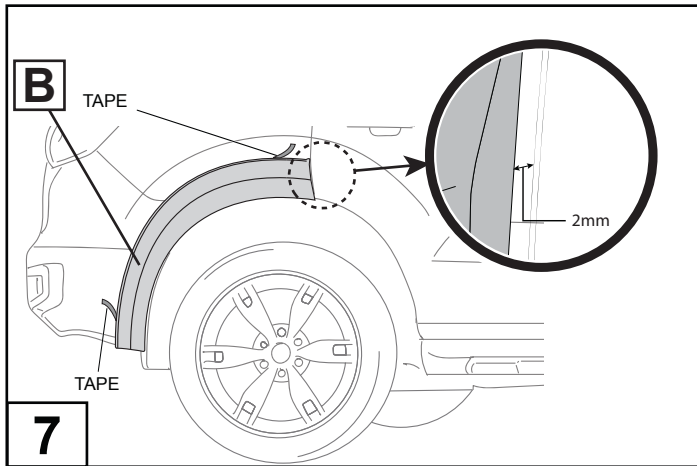
**4**  
Remove approximately 50mm of the protective liner from the extrusion. Fit the extrusion (Q) to only the rear Fender Flare (B) along with the edge that comes in contact with the vehicle's body panel. **NOTE:** Start applying the extrusion from area shown above.



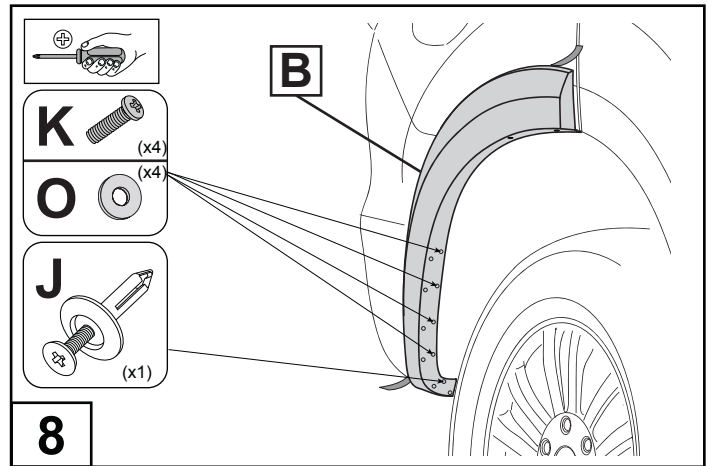
**5**  
Pulling at right angles to the extrusion (Q), remove the liner from the extrusion in small portions and apply thumb pressure to ensure that it adheres to the Fender Flare (B). Trim any unnecessary extrusion and discard.



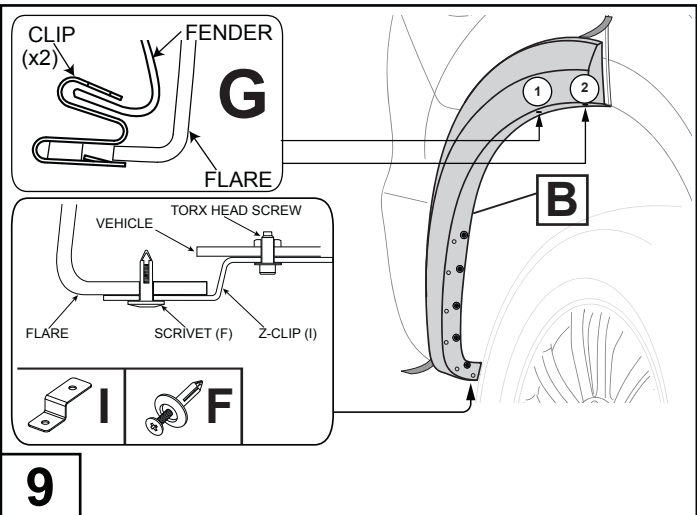
**6**  
Apply masking tape as shown at 200mm intervals or where required to the fender flare extrusion (Q). Fix the tape to the rear of the extrusion (Q) over the tape lining and over the front face of the Fender Flare (B). Ensure the tape does not overlap the tape lining and is not fixed to the inside surface of the fender flare (B).



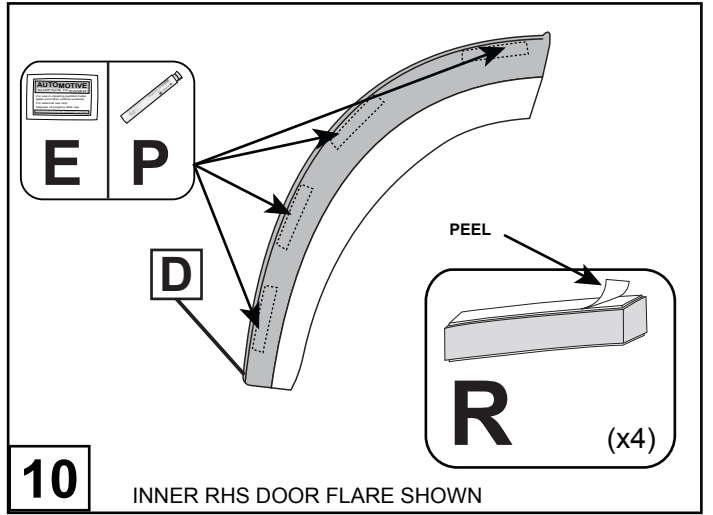
Mark 2mm from the edge of the split on the fender. Peel back red tape liner, about 50mm from each corner of the adhesive tape on the back of the fender flare (B). Now fit the flare to the vehicle on the marked spot 2mm away from the edge. **NOTE:** Ensure the Fender Flare is fitted as per the recommended 2mm from edge to prevent the rear flares looking spaced too far apart.



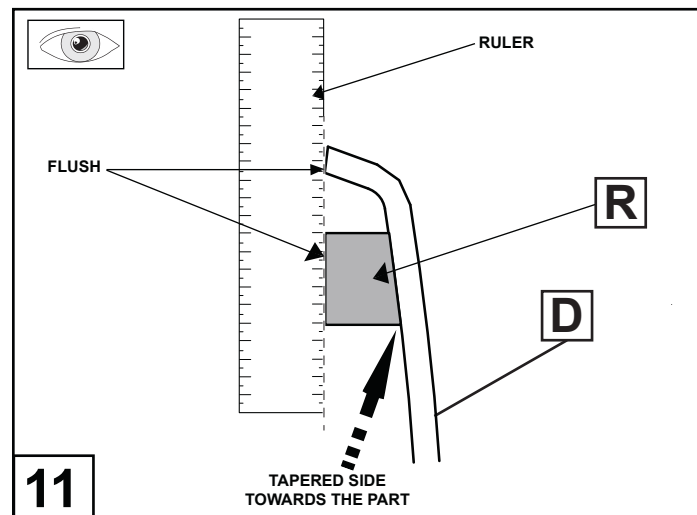
Install the 4 screws (K) and 4 Washers (O) where shown. Install the 1 Long Scrivet (J) where shown. Make sure the hardware is installed into the inner holes on the Fender Flare (B).



Ensure the Fender Flare (B) is still in position 2mm from away from the edge. Install clip (G) (x2) by pushing it on to the fender flip and then rotate downward in the order shown. Using scrivet (F) attach the Z-clip (I) to the fender flare into the hole on the underside. Secure the Z-clip to the vehicle using the retained Torx head screw from mudflap.

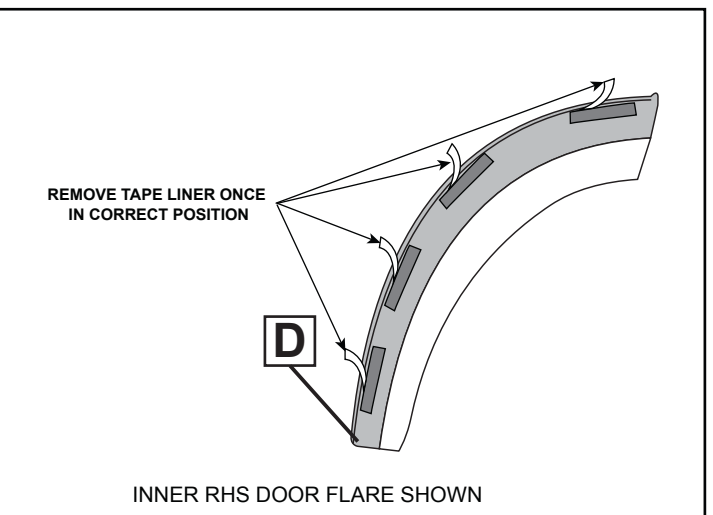


Use alcohol wipes (E) to clean the shaded areas, then apply primer stick (P) to the shaded area on the Door Rear Fender Flare (D). Peel away a small portion of tape liner on the tapered side of each Wedge Block (R) in preparation for fitting. **NOTE:** Do not apply Wedge Blocks in this step.



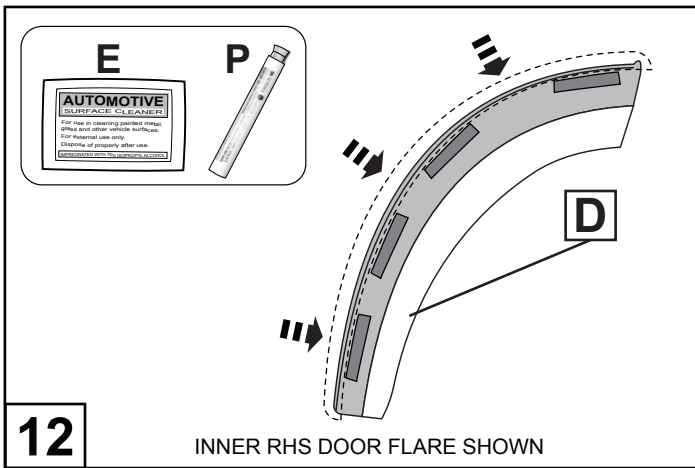
Place the Wedge Blocks (R) on the scribed locations (one at a time) with the tapered side facing the inner fender flare (D) as shown above. Check that the Wedge Block (R) is flush with the edge of the fender flare (D) using a ruler. If the Wedge Block (R) and fender flare (D) are not flush, move the Wedge Block (R) slightly downwards until both components sit flush. Once the position is confirmed, peel back the remaining tape liner to fix in position. This step applies to all 4 Wedge Blocks (R).

**NOTE:** If wedge blocks are not placed in the correct positions as shown, the alignment of the door flare will not follow the bumper flare, resulting in a poor finish and customer dissatisfaction.



REMOVE TAPE LINER ONCE IN CORRECT POSITION

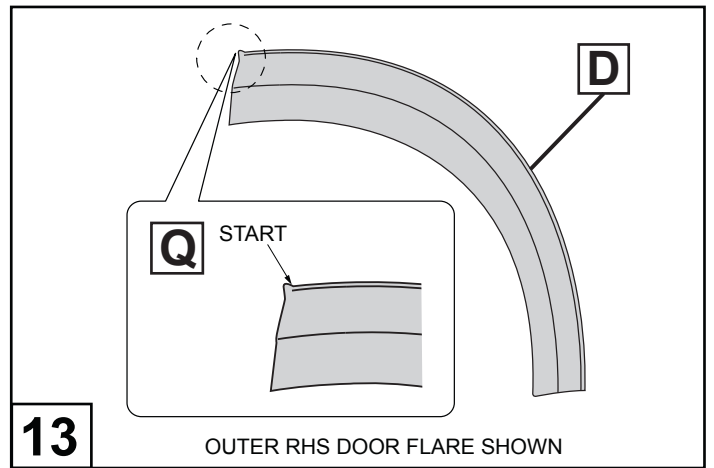
INNER RHS DOOR FLARE SHOWN



12

INNER RHS DOOR FLARE SHOWN

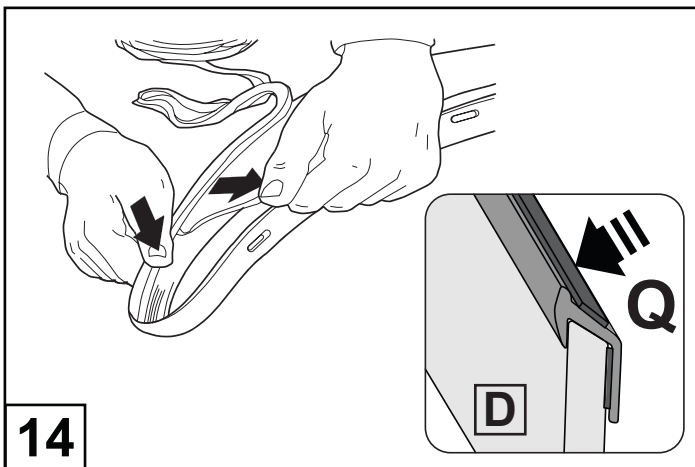
Clean the inside edge of the Fender flare (D) where the rubber extrusion will adhere with the Alcohol Wipe (E) and prime with the Primer Stick (P) supplied.



13

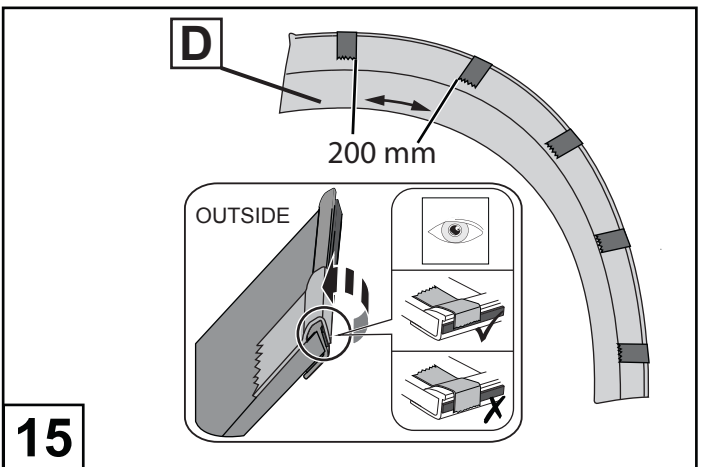
OUTER RHS DOOR FLARE SHOWN

Remove approximately 50mm of the protective liner from the extrusion. Fit the extrusion to the Door Fender Flare (D) along with the edge that comes in contact with the vehicle's door. **NOTE:** Start applying the extrusion from area shown above.



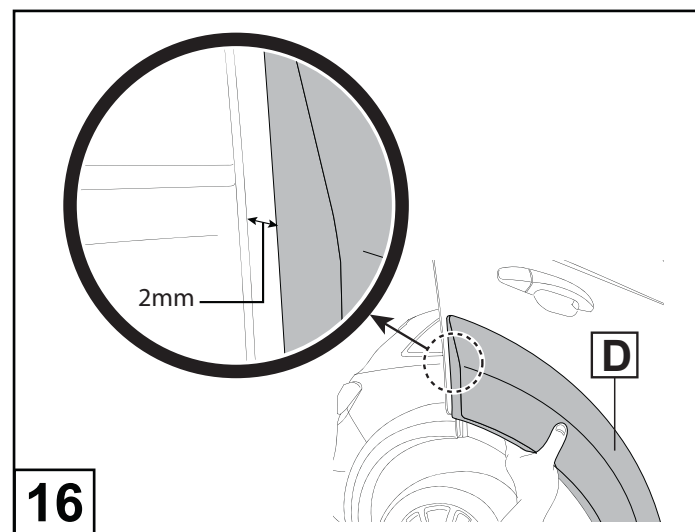
14

Pulling at right angles to the extrusion (Q), remove the liner from the extrusion in small portions and apply thumb pressure to ensure that it adheres to the Fender Flares. Trim any unnecessary extrusion and discard.



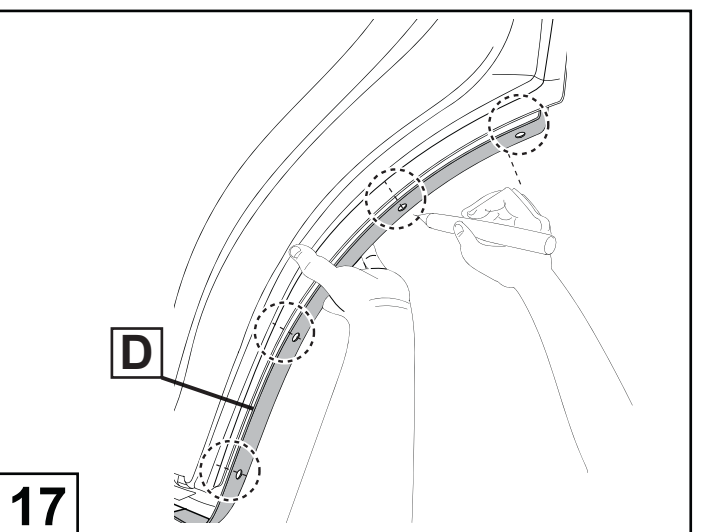
15

Apply masking tape as shown at 200mm intervals or where required to the fender flare extrusion (Q). Fix the tape to the rear of the extrusion (Q) over the tape lining and over the front face of the Fender Flare (D). Ensure the tape does not overlap the tape lining and is not fixed to the inside surface of the fender flare (D).



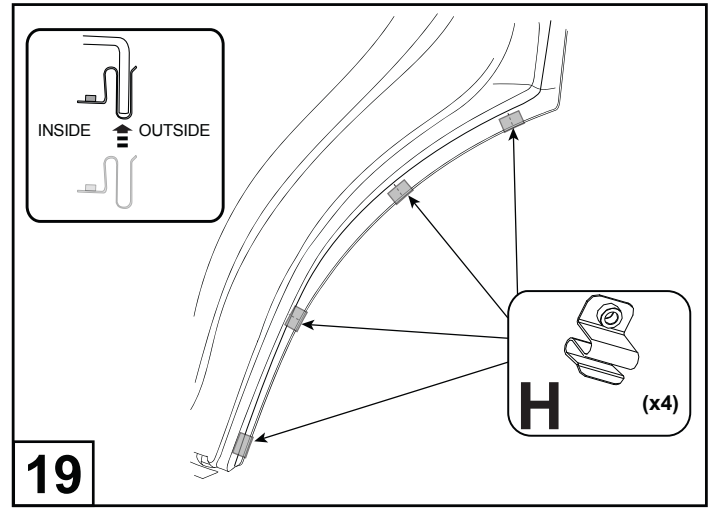
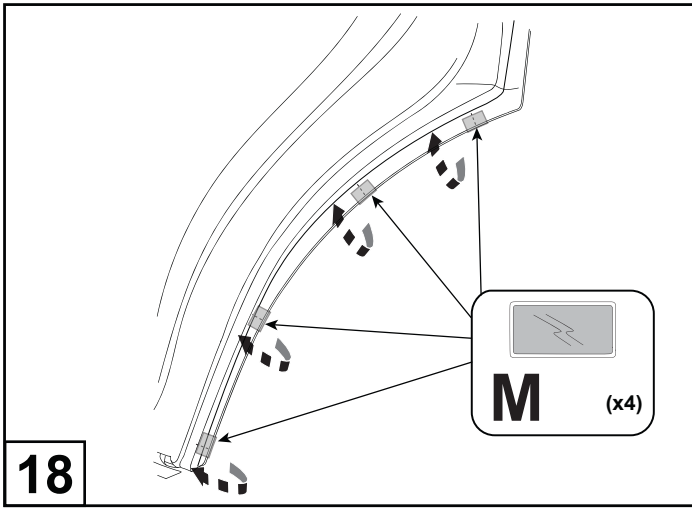
16

Position Fender Flare (D) against the door. Measure from the edge of the door to the Fender Flare as shown above. Ensure the Fender Flare is spaced 2mm away from the edge of the door. Mark the final position. **NOTE:** Ensure the flare is fitted as per the recommended 2mm from edge to prevent the rear flares looking spaced too far apart.



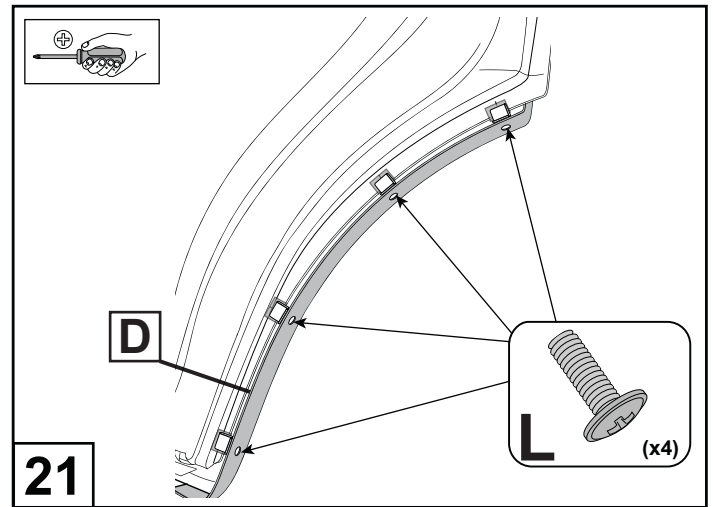
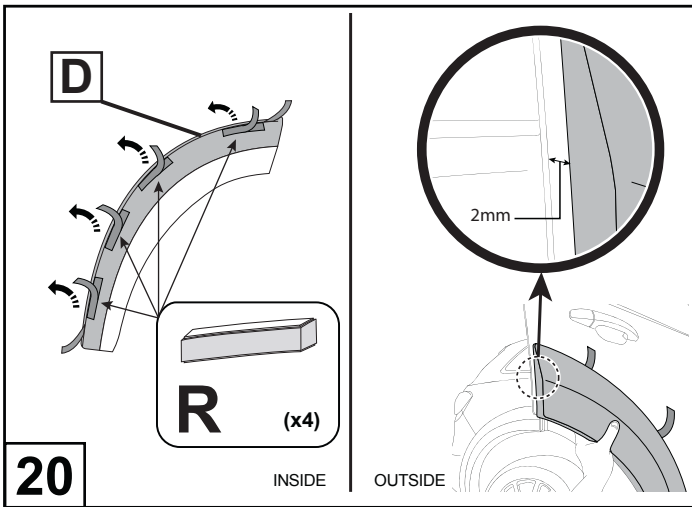
17

From the inside of the rear door hold the flare (D) in the position marked previously. Mark the position of the 4 holes in the flare against the inner door using a non permanent marker.



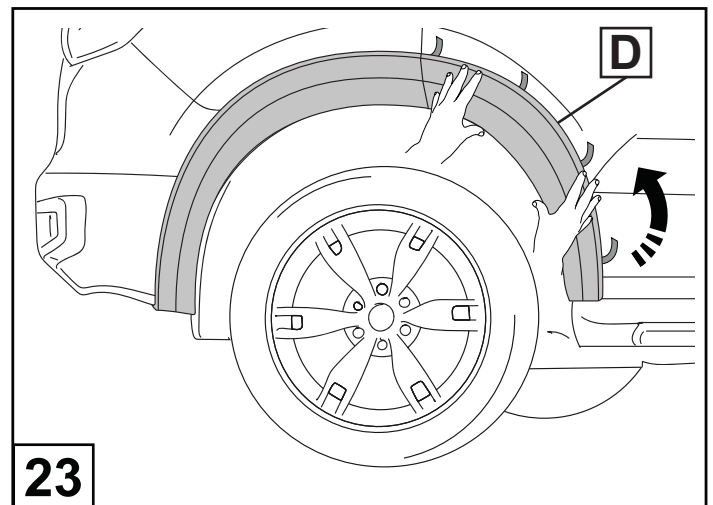
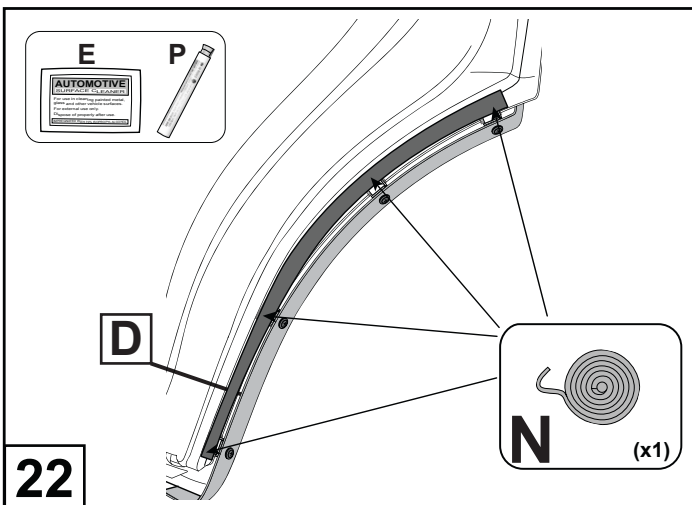
Stick the Anti Abrasive Tapes (M) over the door edge. Make sure the tapes are placed over the marked sections. Ensure both sides of the door are covered. (Tape folds over edge.)

Push the 4 Clips (H). Over the Anti Abrasive Tapes. If the clip is loose on any of the locations, add an additional abrasive tape on top of the previous tape. **NOTE:** Ensure the center hole on each clip aligns with the 4 marks from step 12.



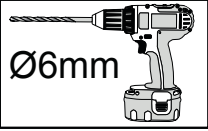
Peel back approximately 20mm of Tape liner from the Wedge Blocks (R). Also peel back about 50mm from each corner of the adhesive tape (red tape liner) on the back of the fender flare (D). Fit Flare (D) to the rear door. Make sure the 2mm gap from flare to door edge is present.

Ensure all holes with the flare and clips align. Adjust if required. Screw (L) the 4 M4x10 to secure.

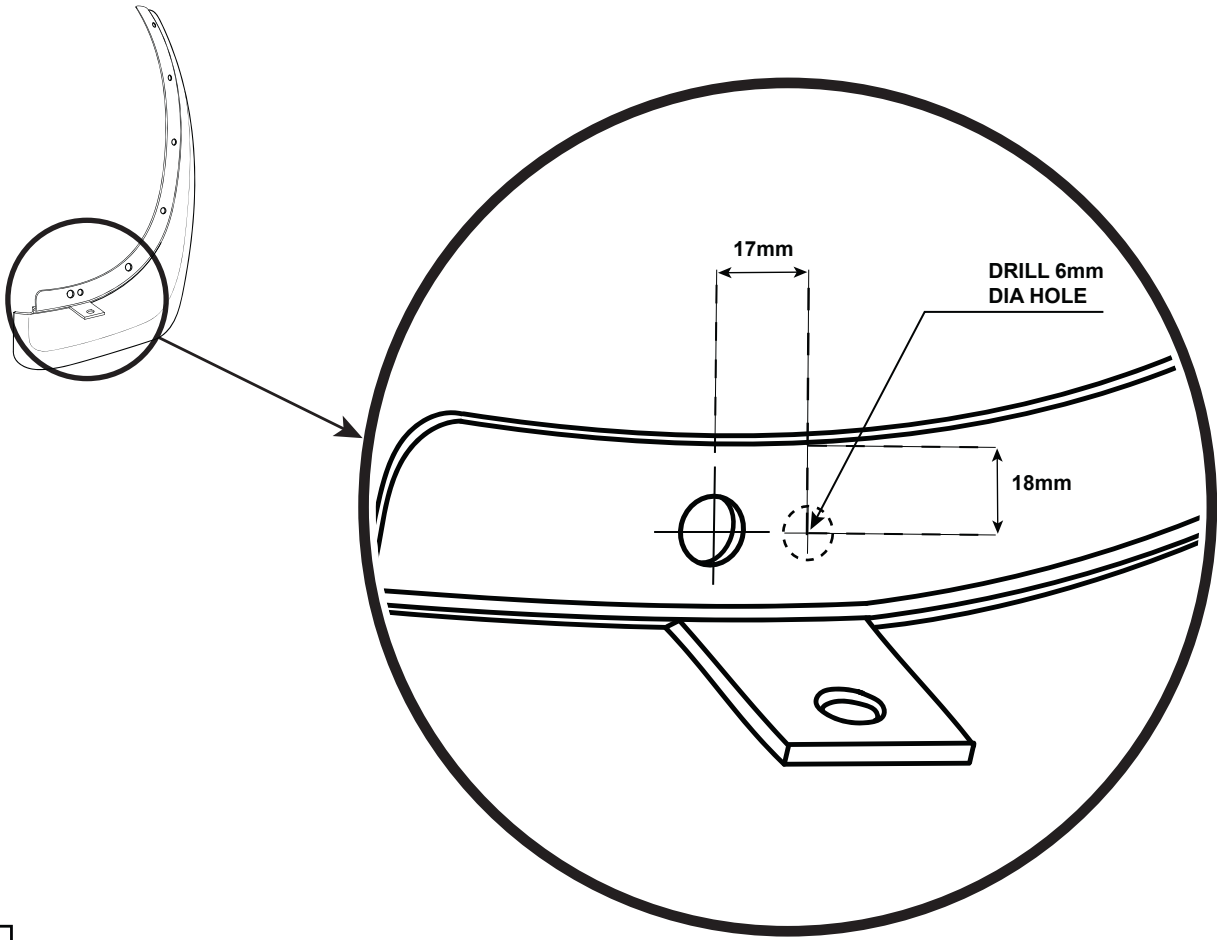


Wipe the inner side of the door with alcohol wipe and primer and use felt tape (N) provided to cover the fixings on the inner side of the door .

Remove the tape liners by pulling up and out. Discard of the liners. Ensure you remove them front to back. Apply pressure to the Flare (D) to ensure tape is fully seated to ensure maximum adhesion.

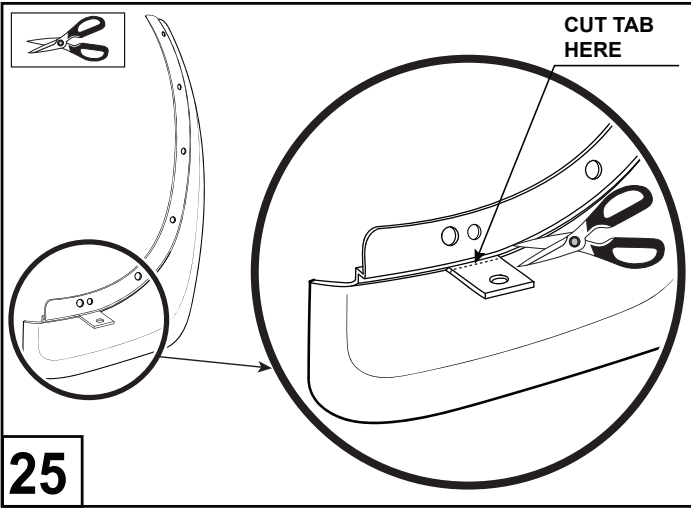


REAR RHS MUDFLAP (REAR VIEW)



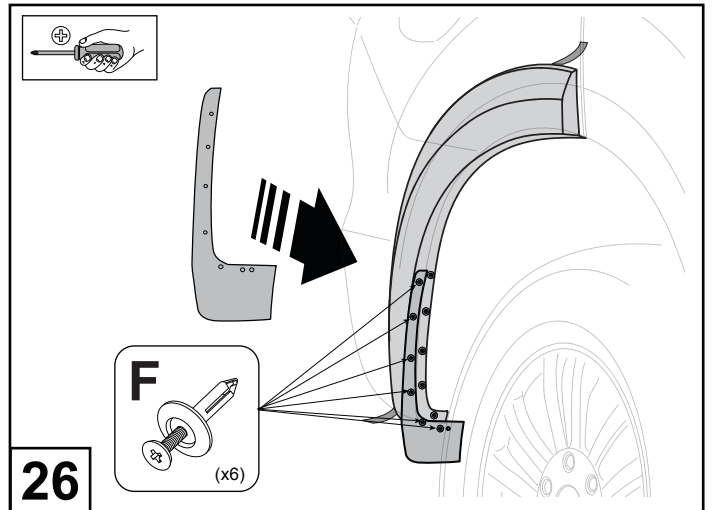
24

Mark the drill position with a non permanent marker using the measurements shown above. Double check measurements prior to drilling. Drill Ø6mm hole through the mudflap in the position shown above.



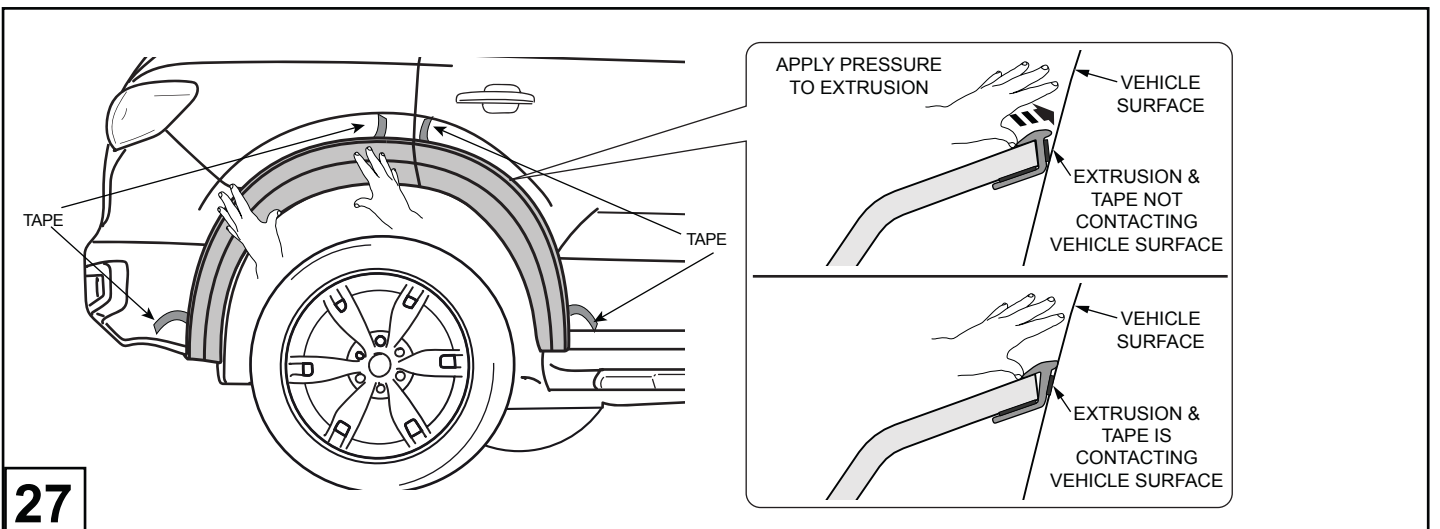
**25**

Trim off the tab protruding out from the mudflap and discard.



**26**

Align the mudflap to the fender flare. Secure by installing 6 supplied Scrivets (F). Ensure the bottom Scrivet is attached through the newly drilled hole.



**27**

Ensure that flare is aligned. Remove the tape liner. Using your thumb and/or fingers apply firm pressure on the extrusion to ensure the extrusion and the tape is contacting the vehicle surface around the full perimeter of the flares.

## IMPORTANT

STEPS SHOWN FOR RHS ARE APPLICABLE FOR LHS.