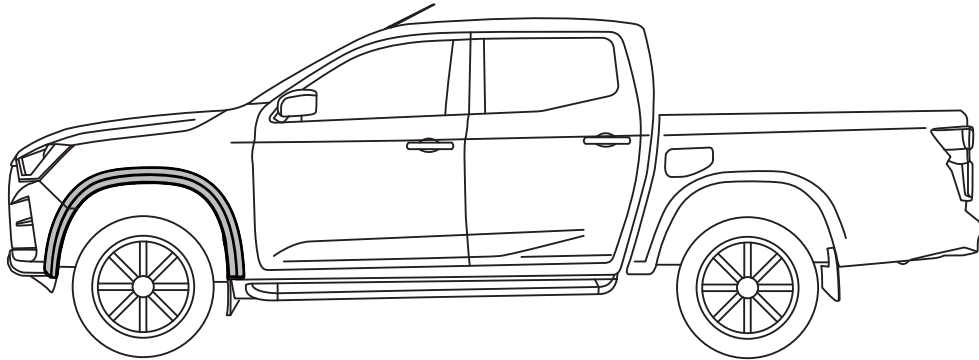


## FRONT FENDER FLARES INSTALLATION INSTRUCTIONS

ISUZU D-MAX MY21



Installation Time: Approx. 48 mins

### NOTES:

- Ensure that both left and right hand Fender Flares suit the profile of the vehicle. Note the areas where the Fender Flares come in contact with the vehicle.
- Before fitting Fender Flares remove any mouldings, strips or existing flares from the wheel arch. If there is a body side moulding, mark where the moulding is to be cut, alternatively the Fender Flares can be cut to go around the moulding. Be sure to allow enough room for the extrusion.
- Read instructions carefully. This product must be installed exactly as specified in these instructions. Failure to do so may result in improper fit and/or retention.

### PERSONAL PROTECTIVE EQUIPMENT:



Mask



Rubber Gloves



Goggles



Hearing Protection

### Care Instructions:



Clean vehicle with a mild detergent and water solution.




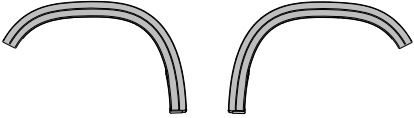

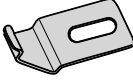
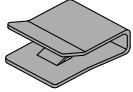
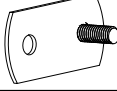








Do not use abrasive cleaners or solvents.

### Tools Required:

- Small flat head Screwdriver.
- Phillips head Screwdriver.
- Non Permanent Marker / Metal Scribe.
- Scissors or Sharp Knife.
- Masking Tape.
- Mild Soapy Water & Clean Cloths.
- Torx T20 Drive.

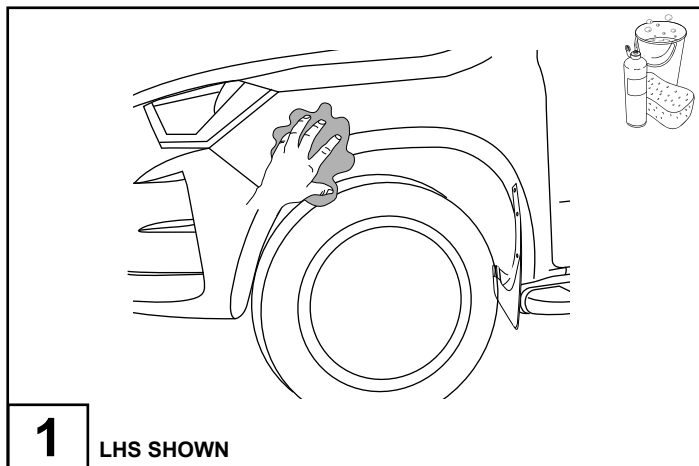
# FRONT FENDER FLARES INSTALLATION INSTRUCTIONS

## PARTS IN FITTING KIT

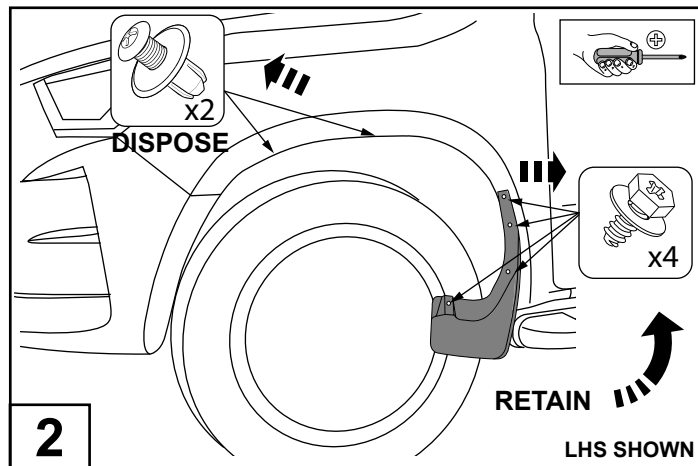
NO.	COMPONENT	PART NUMBER	QTY	PART
1	Front Bumper Flares (RHS & LHS)		2	
2	Front Fender Flares (RHS & LHS)		2	
3	Extrusion	MISC3729	1	
4	Angle Clip	CLIP0896PC	4	
5	Clip	CLIP1074PC	6	
6	Mud Flap Strap	CLIP4050PC	2	
7	Scrivet	FAST0429	6	
8	Washer	WASH0130	6	
9	Primer	MISC1365	1	
10	M6 Nylock Nut	NUTS0190	2	
11	Pan Head Screw	SCRW0735	4	
12	U-Nut	NUTS0198	4	
13	Alcohol Wipe	MISC0052	1	
14	Installation Instructions	FF974a	1	

# FRONT FENDER FLARES INSTALLATION INSTRUCTIONS

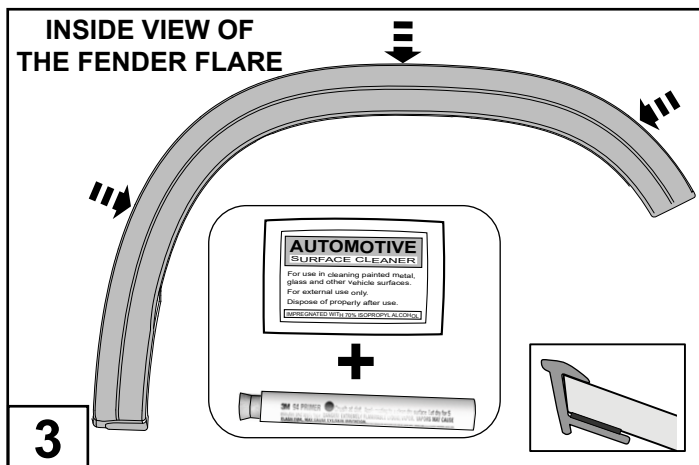
**⚠ LHS INSTALLATION INSTRUCTIONS SHOWN. REPEAT ALL STEPS FOR THE RHS. ⚠**



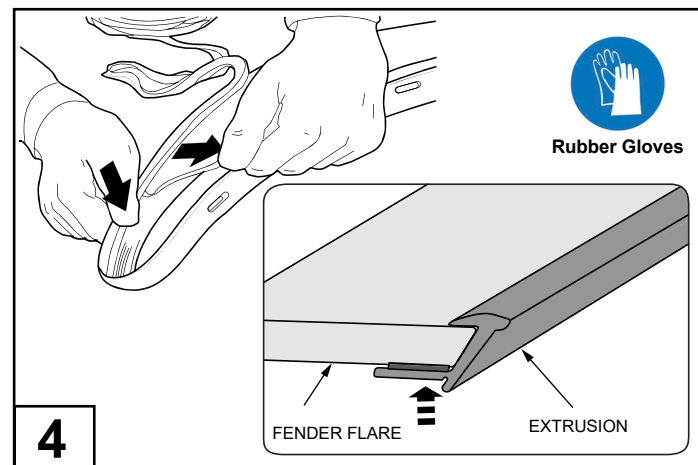
Wash the areas of contact on the vehicle and wipe dry both the vehicle and the Fender Flares with a clean cloth. Ensure inside of Fender Flares where extrusion is to be attached is clean.



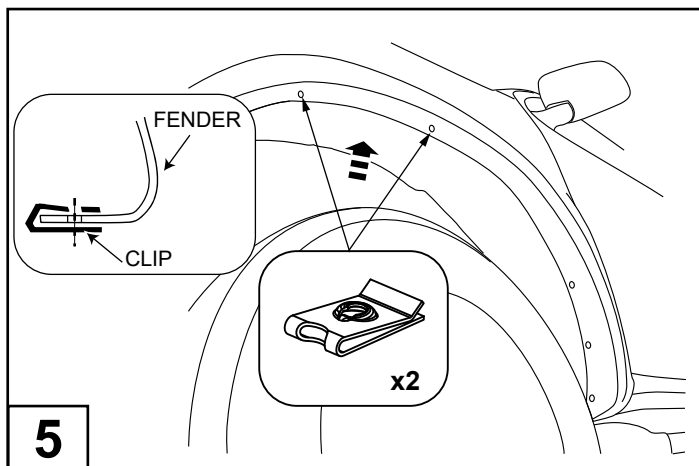
Remove the front mud flaps by removing 4 screws from inside the wheel arch as shown and retain. Remove the two top scrivets using a flat head screwdriver and dispose.



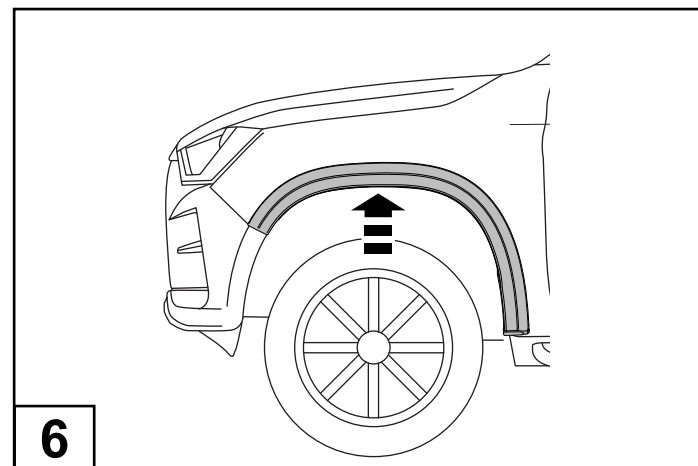
Where the rubber extrusion will adhere (inside edge), clean the inside edge of each Front Fender Flare (2) with an Alco-hol Wipe (13) and apply Primer (9).



Remove approximately 50mm of the protective liner from the Extrusion (3). Gradually fit the extrusion to the flare along the edge that comes in contact with the vehicles body panel while gradually removing the liner to keep the extrusion adhered to the flare as per the above illustration.

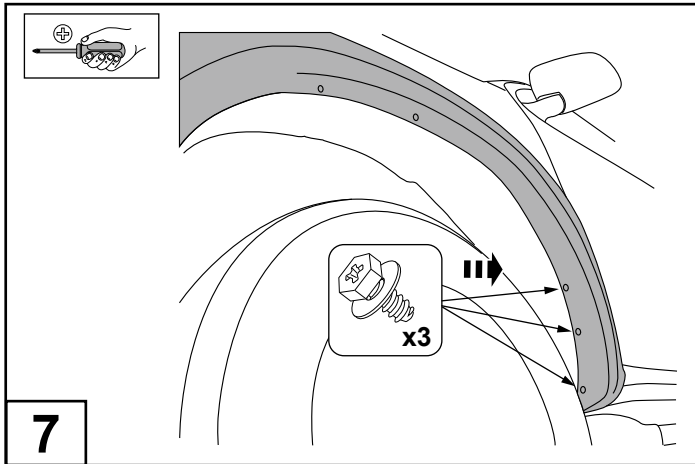


Hold the splash guard inwards and push the U-Nut (12) into the two holes at the top of the fender edge as shown.

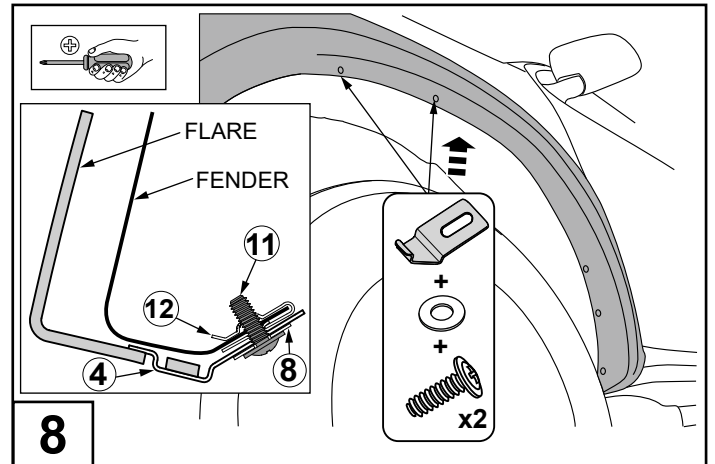


Install the front flare to the vehicle as shown.

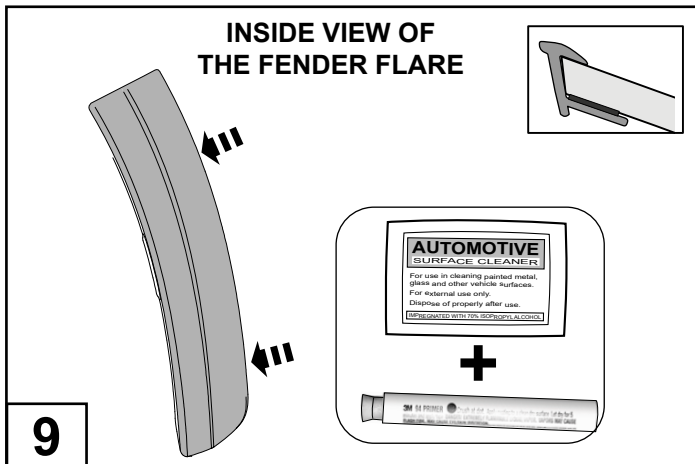
# FRONT FENDER FLARES INSTALLATION INSTRUCTIONS



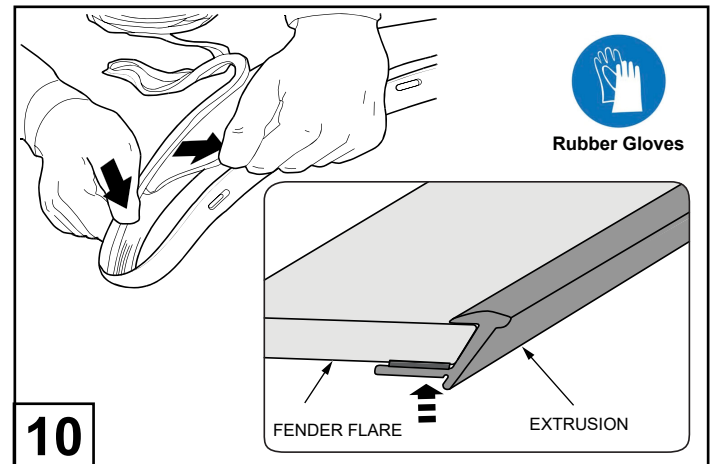
7 Install the 3 screws previously retained during the mud flap removal and fasten the flare to the vehicle as shown.



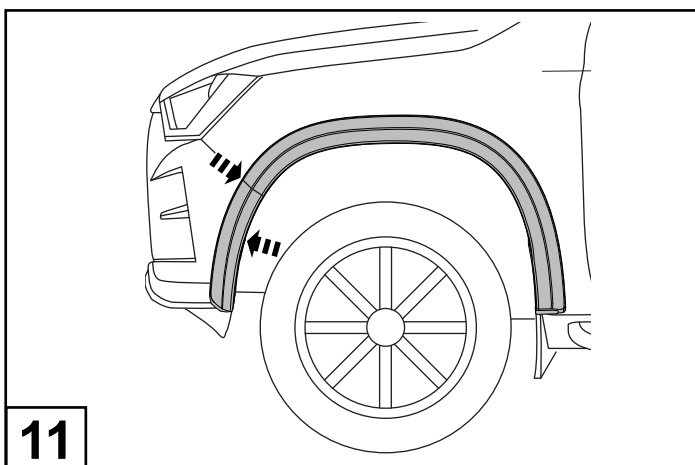
8 Fit the 2 Angle Clips (4) in positions shown, securing in place with two Pan head screws (11) and washers (8) into the U-Nut (12).



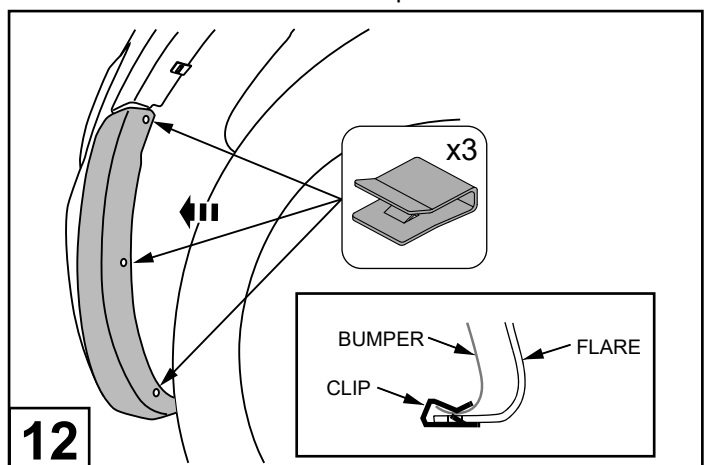
9 Where the rubber extrusion will adhere (inside edge), clean the inside edge of each Front Bumper Flare (1) with an Alcohol Wipe (13) and apply Primer (9).



10 Remove approximately 50mm of the protective liner from the Extrusion (3). Gradually fit the extrusion to the flare along the edge that comes in contact with the vehicles body panel while gradually removing the liner to keep the extrusion adhered to the flare as per the above illustration.

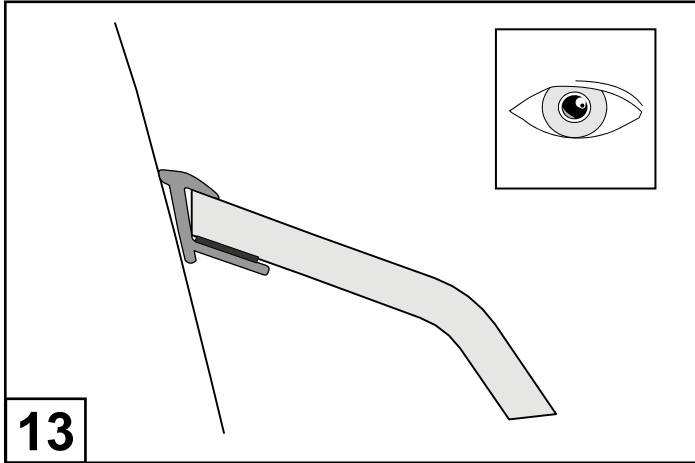


11 Fit the Front Bumper Flare (1) as shown. Align the top edge with the top edge of the Fender Flare (2).

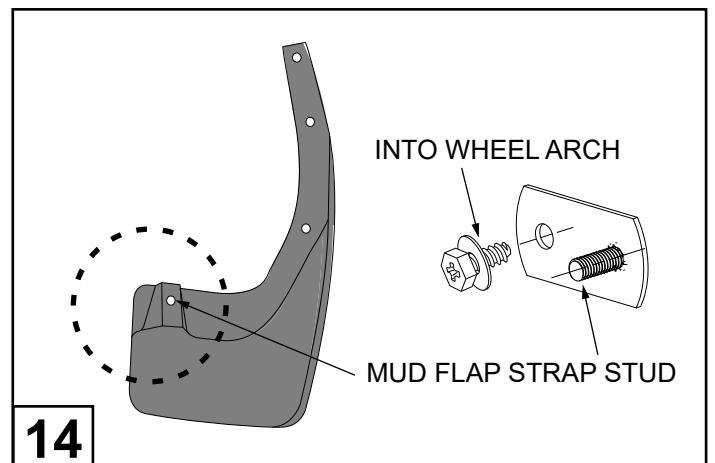


12 Secure the flare to the bumper using 3 Clips (5). Push the clip over the edge of the flare and bumper till it click into the slot in the flare.

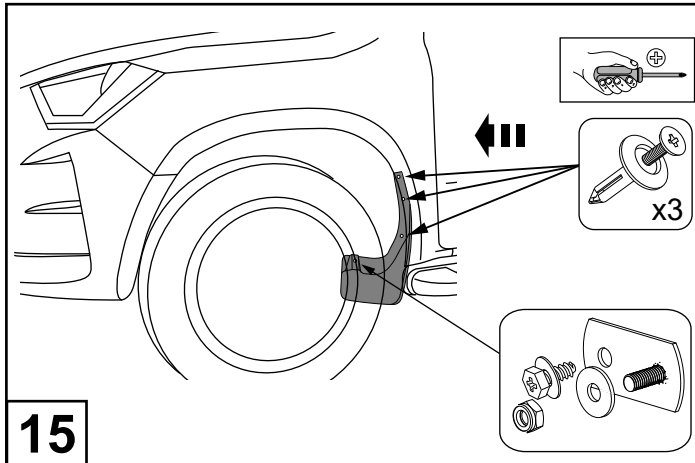
## FRONT FENDER FLARES INSTALLATION INSTRUCTIONS



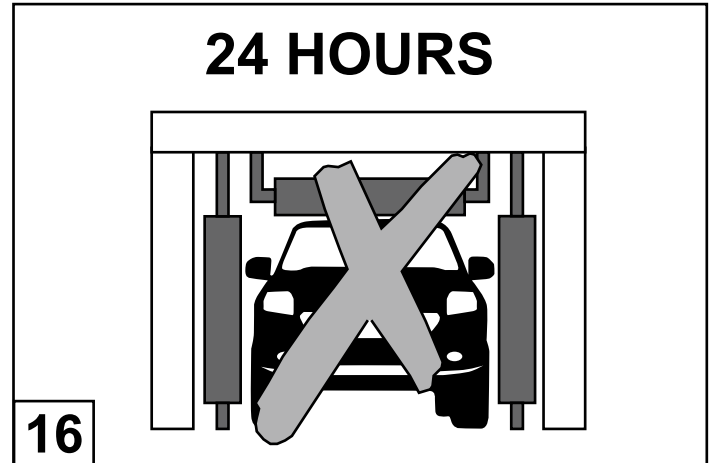
Ensure the Extrusion (1) is firmly applied and flush with the vehicle.



The factory mud flap will be offset from the original position due to the Front Fender Flare (2) fitment location. Prepare to fit mud flap with Mud Flap Strap (6) and last remaining retained screw from Step 2. When fitting, fit the Mud flap Strap (4) stud into the highlighted hole.



Install the Mud Flap Strap (6) by screwing the last remaining retained screw through the bracket slot to the vehicle as shown in the Detail. Secure the mud flap to the Fender Flare 3 with Scrivets (7) as shown in the Diagram. Finally, secure mud flap to Mud Flap Strap (6) using washer (8) and a M6 Nylock Nut (10) as shown in the Detail.



Avoid agitation to the fitted Fender Flares (2), for example an automatic car wash or off road activity for at least 24 hours after fitting to ensure the Extrusion (2) adhesive cures completely.