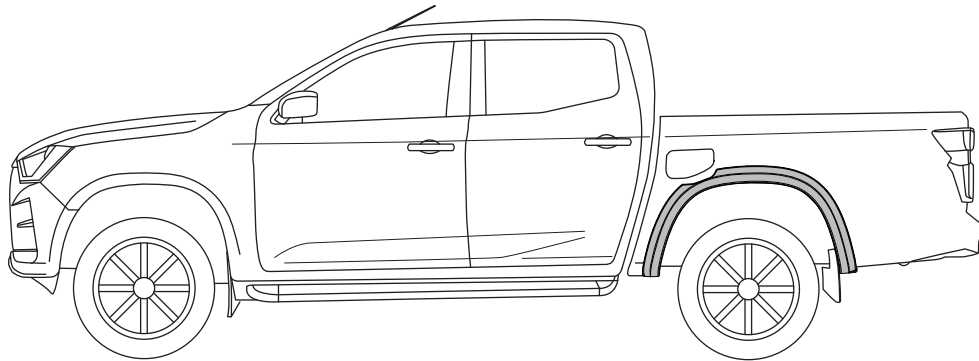


## REAR FENDER FLARES INSTALLATION INSTRUCTIONS

ISUZU D-MAX MY21



Installation Time: Approx. 30 mins

### NOTES:

- Ensure that both left and right hand Fender Flares suit the profile of the vehicle. Note the areas where the Fender Flares come in contact with the vehicle.
- Before fitting Fender Flares remove any mouldings, strips or existing flares from the wheel arch. If there is a body side moulding, mark where the moulding is to be cut, alternatively the Fender Flares can be cut to go around the moulding. Be sure to allow enough room for the extrusion.
- Read instructions carefully. This product must be installed exactly as specified in these instructions. Failure to do so may result in improper fit and/or retention.

### PERSONAL PROTECTIVE EQUIPMENT:



Mask



Rubber Gloves



Goggles



Hearing Protection

### Care Instructions:



Clean vehicle with a mild detergent and water solution.



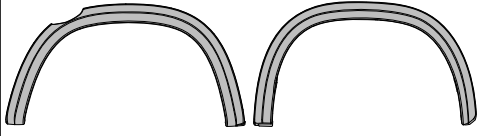

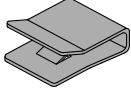
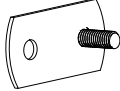








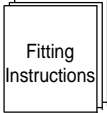
Do not use abrasive cleaners or solvents.

### Tools Required:

- Small flat head Screwdriver.
- Phillips head Screwdriver.
- Non Permanent Marker / Metal Scribe.
- Scissors or Sharp Knife.
- Masking Tape.
- Mild Soapy Water & Clean Cloths.
- Torx T20 Drive.

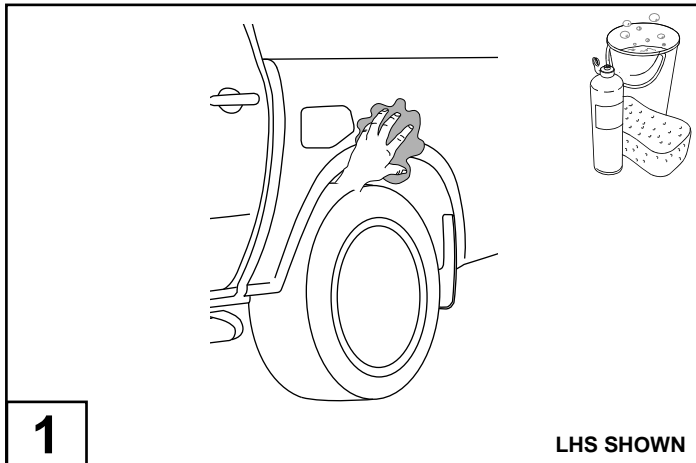
# REAR FENDER FLARES INSTALLATION INSTRUCTIONS

## PARTS IN FITTING KIT

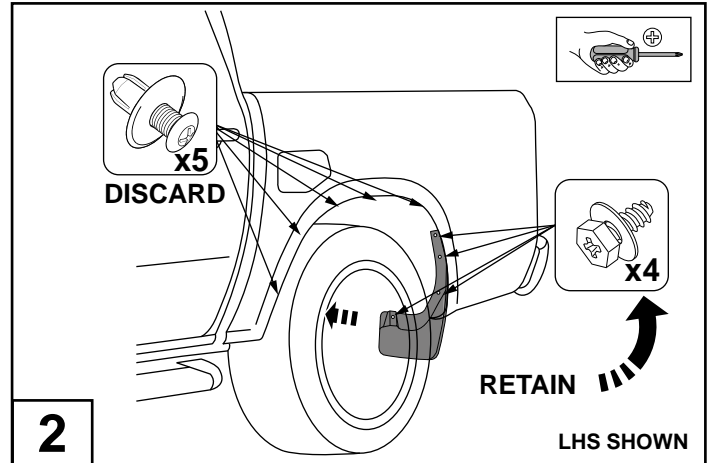
NO.	COMPONENT	PART NUMBER	QTY	PART
1	Rear Fender Flares (RHS & LHS)		2	
2	Extrusion	MISC3729	1	
3	Narrow Clip	CLIP1074PC	2	
4	Mud Flap Strap	CLIP4050PC	2	
5	Scrivet	FAST0429	6	
6	M6 Nylock Nut	NUTS0190	2	
7	Washer	WASH0130	8	
8	Wide Clip	CLIP1592PC	2	
9	Alcohol Wipe	MISC0052	1	
10	Primer	MISC1365	1	
11	U-Nut	NUTS0198	6	
12	Pan Head Screw	SCRW0735	6	
13	Fitting Instructions	FIT-FF975	1	

# REAR FENDER FLARES INSTALLATION INSTRUCTIONS

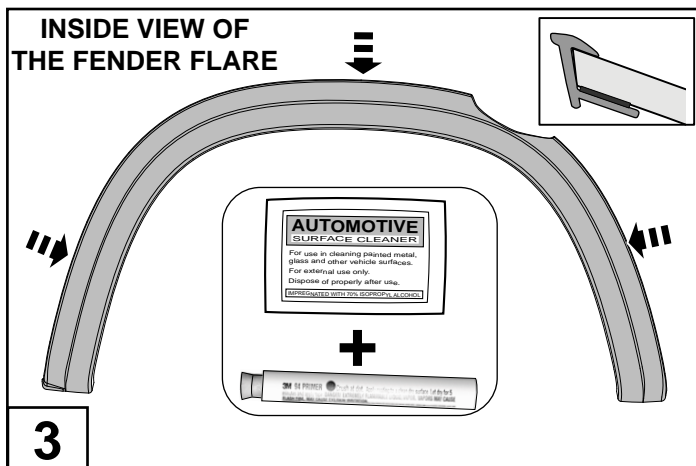
**! LHS INSTALLATION INSTRUCTIONS SHOWN. REPEAT ALL STEPS FOR THE RHS. !**



Wash the areas of contact on the vehicle and wipe dry both the vehicle and the Fender Flares with a clean cloth. Ensure inside of Fender Flares where extrusion is to be attached is clean.

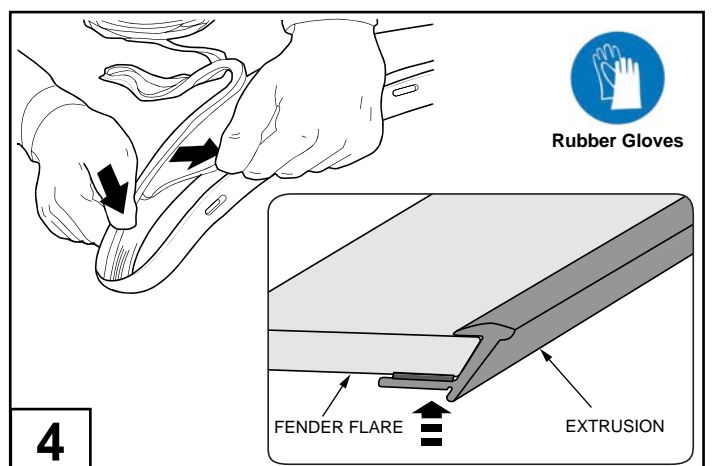


Remove the rear mud flaps by removing four screws. Remove the five screws from inside the wheel arch using a flathead screwdriver as shown. Retain all screws for later use in Fitting Instruction. Discard all removed screws.

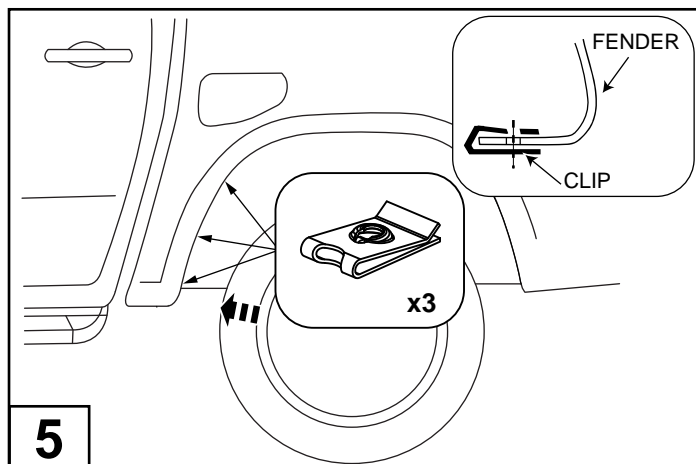


Where the Rubber Extrusion (2) will adhere (inside edge), clean the inside edge of each Rear Fender Flare (1) with Alcohol Wipe (9) and apply Primer (10). One Primer Stick (10) will cover the required area for both Flares.

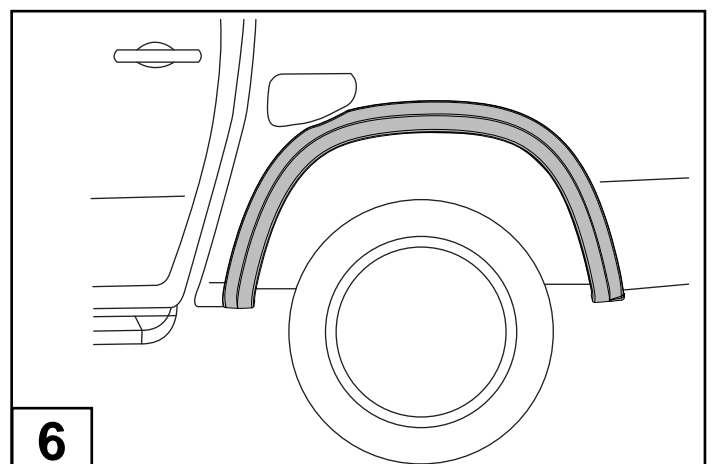
**NOTE:** Allow Alcohol Wipe (9) residue to evaporate before applying Primer (10).



Remove approximately 50mm of the protective liner from the Extrusion (2). Gradually fit the extrusion to the flare along the edge that comes in contact with the vehicles body panel while gradually removing the liner to keep the extrusion adhered to the flare as per the above illustration. Trim any unnecessary Extrusion (2) and discard.

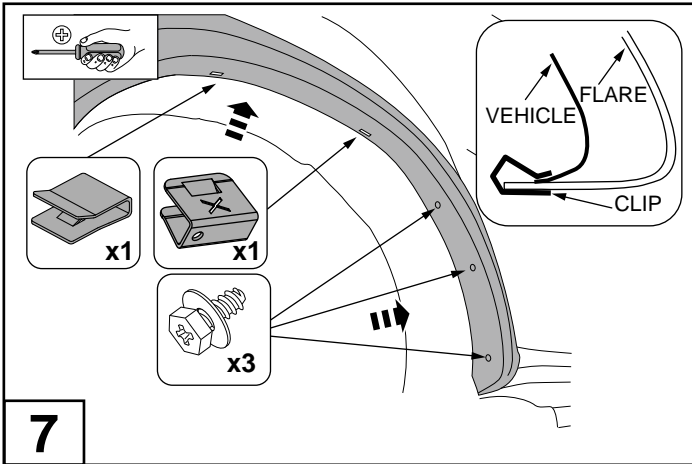


Push the 3 U-Nuts (11) over the edge of the front part of the rear fender and align with existing holes.

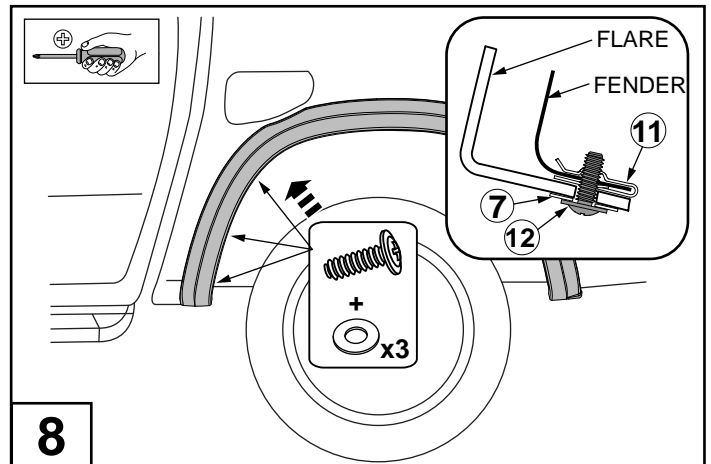


Roughly fit the Rear Fender Flare (1) to vehicle. Have someone hold in place for the following Steps.

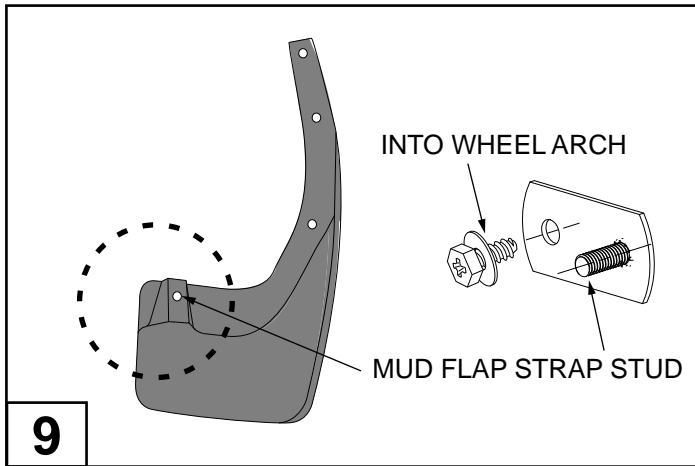
# REAR FENDER FLARES INSTALLATION INSTRUCTIONS



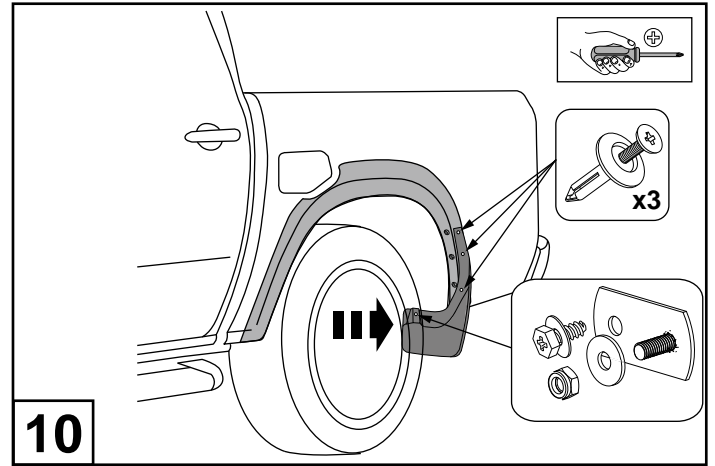
Using three of the four retained screws from Step 2, secure Rear Fender Flare (1) as shown. Secure the middle of the Rear Fender Flare (1) to the wheel arch using one Narrow Clips (3) and one Wide Clip (8) as shown.



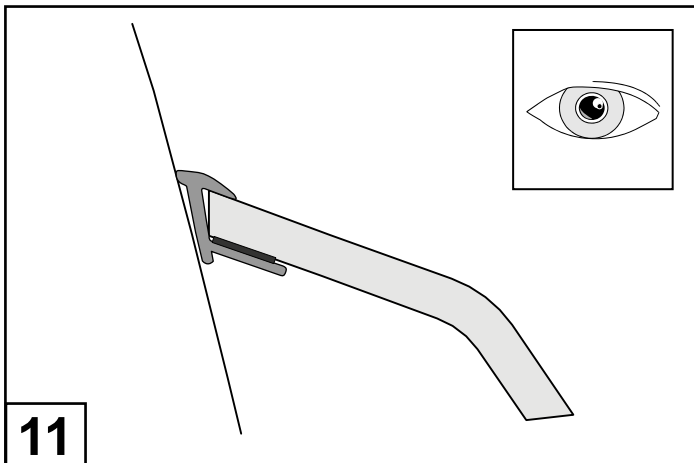
Secure the front part of the flare with 3 Pan head screws (12) and washers (7) into the U-Nut (11).



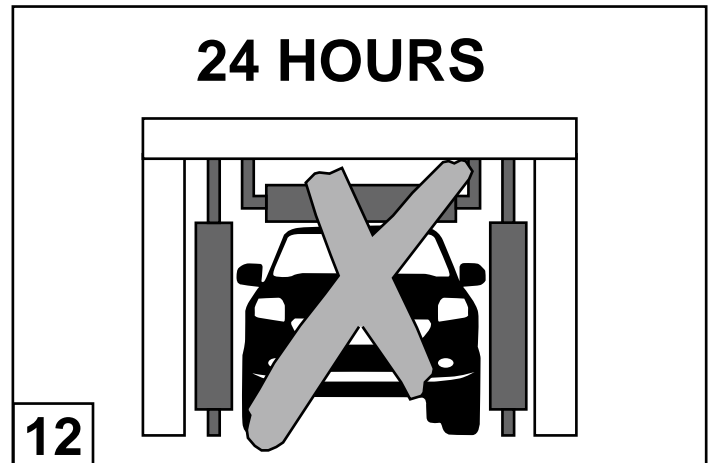
The factory mud flap will be offset from the original position due to the Rear Fender Flare (2) fitment location. Prepare to fit mud flap with Mud Flap Strap (4) and last remaining retained screw from Step 2. When fitting, fit the Mud flap Strap (4) stud into the highlighted hole.



Install the Mud Flap Strap (4) by screwing the last remaining retained screw through the bracket slot to the vehicle as shown in the Detail. Secure the mud flap to the Fender Flare (2) with three Scrivets (5) as shown in the Diagram. Finally, secure mud flap to Mud Flap Strap (4) using a Washer (7) and a M6 Nylock Nut (6) as shown in the Detail.



Ensure the Extrusion is firmly applied and flush with the vehicle.



Avoid agitation to the fitted Fender Flares, for example an automatic car wash or off road activity for at least 24 hours after fitting to ensure the Extrusion adhesive cures completely.