

FORD RANGER 2022 ➔

FRONT FENDER FLARES INSTALLATION INSTRUCTIONS

NOTES:

- Ensure that both left and right hand Fender Flares suit the profile of the vehicle. Note the areas where the Fender Flares come in contact with the vehicle.
- Before fitting Fender Flares remove any mouldings, strips or existing flares from the wheel arch. If there is a body side moulding, mark where the moulding is to be cut, alternatively the Fender Flares can be cut to go around the moulding. Be sure to allow enough room for the extrusion.
- Read instructions carefully. This product must be installed exactly as specified in these instructions. Failure to do so may result in improper fit and/or retention.

PERSONAL PROTECTIVE EQUIPMENT:



Mask



Rubber Gloves



Goggles



Hearing Protection

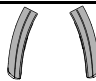
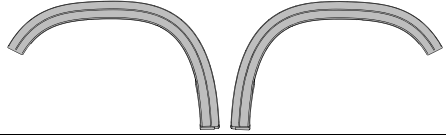



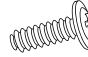







Tools Required:

- Small flat head Screwdriver
- Scissors or Sharp Knife
- Torx T25 Drive
- Phillips head Screwdriver
- Mild Soapy Water & Clean Cloths

PARTS LIST:






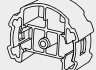

XL, XLS, XLT, WILDTRACK

*Bolt-on style fender flares only

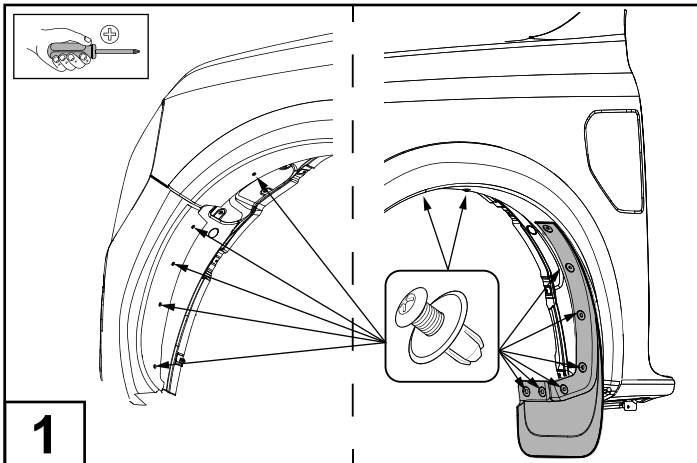
NO.	COMPONENT	PART NUMBER	QTY	IMAGE
1	Front Bumper Flares (RHS & LHS)		2	
2	Front Fender Flares (RHS & LHS)		2	
1*	Front Bumper Flares (Bolt-on RHS & LHS)		2	
2*	Front Fender Flares (Bolt-on RHS & LHS)		2	
3	Extrusion	MISC3729	1	
4	Pan Head Screw	SCRW0735	16	
5	U-Nut	NUTS0198	8	
6	White Plug	FAST0041	8	
7	Primer	MISC1365	2	
8	Alcohol Wipe	MISC0052	2	
9	Installation Instructions	FF980b	1	
10	5.5mm Spacer	MISC1649	2	
11*	Bolt Cap (Bolt-on only, fit first)		16	

FRONT FENDER FLARES INSTALLATION INSTRUCTIONS

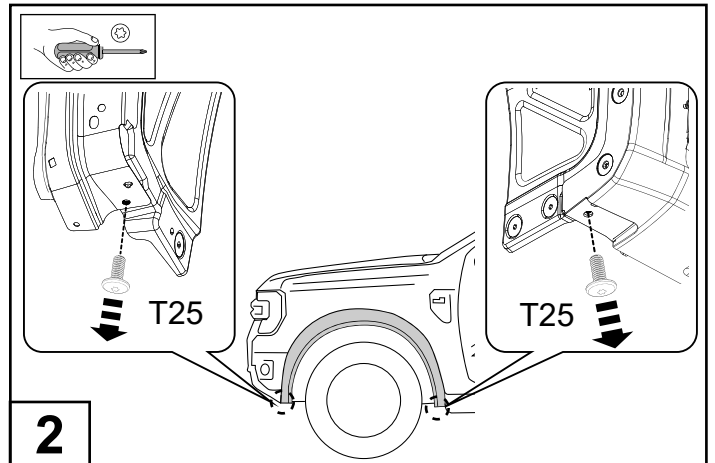
PARK ASSIST KIT

12	Foam Spacer	—	4	
13	Parking Sensor Bezel Nut	—	2	
14	Parking Sensor Bezel	—	2	
15	Parking Sensor Blank	—	2	
16	Parking Sensor Foam	—	2	
17	Parking Sensor Cap	—	2	
18	Parking Sensor Screw	—	4	

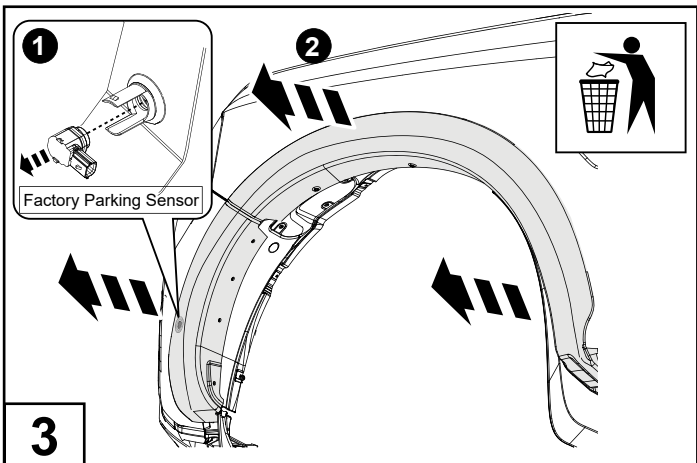
⚠ LHS INSTALLATION INSTRUCTIONS SHOWN. REPEAT ALL STEPS FOR THE RHS. ⚠



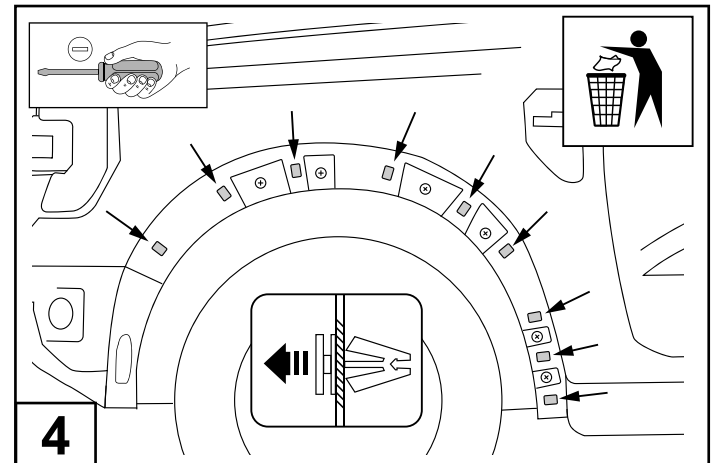
1 Remove all scrvets inside the wheel arch and mudflap as shown and retain 4 for later use.



2 Remove the two T25 torx screws where indicated. Retain front screw for later use.

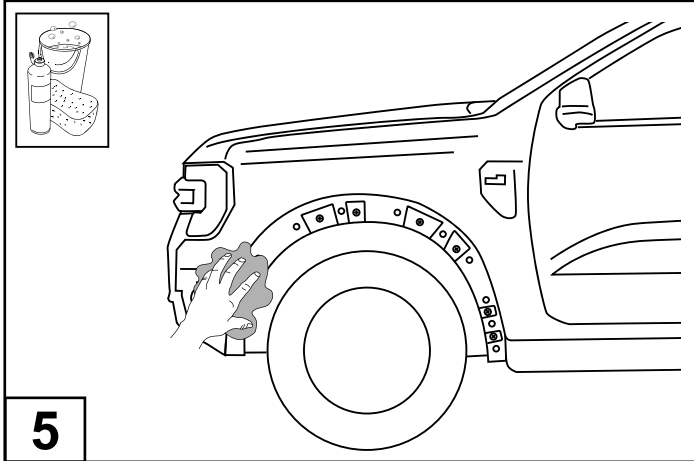


3 Remove the parking sensor from fender flare as shown. Pull off factory fender flares from the vehicle.
NOTE: This will permanently damage these fender flares and retention clips.

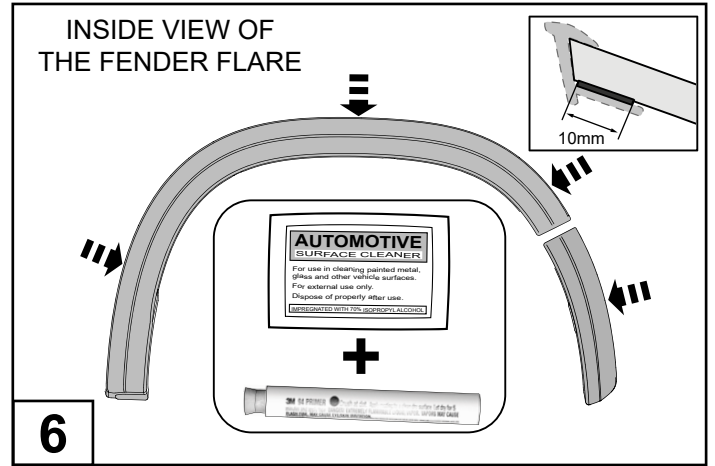


4 Remove the fender flare retention clips from the vehicle.

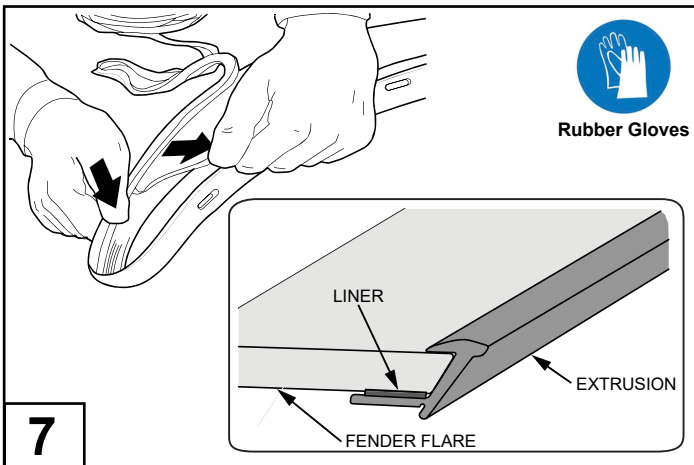
FRONT FENDER FLARES INSTALLATION INSTRUCTIONS



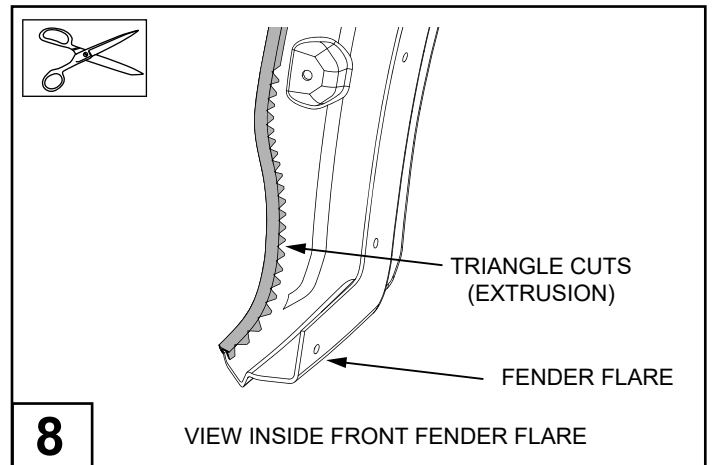
Wash the areas of contact on the vehicle and wipe dry, both the vehicle and the Fender Flares with a clean cloth. Ensure inside of Fender Flares where extrusion is to be attached is clean.



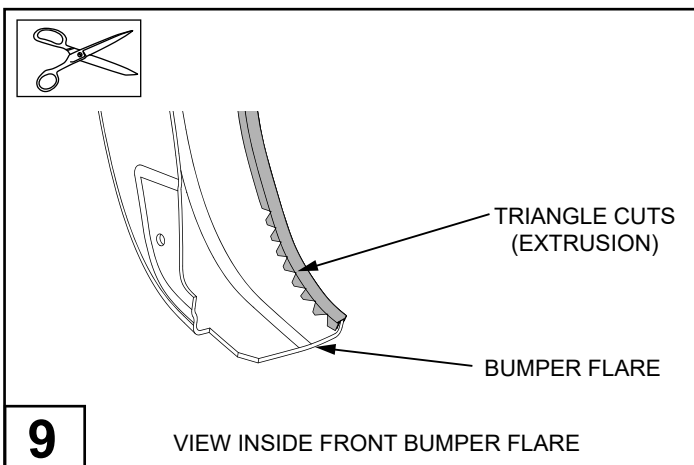
Where the rubber extrusion will adhere (inside edge of fender flare), clean the inside edge of each Front Fender Flare (1&2) with an Alcohol Wipe (8) and apply Primer (7).
NOTE: Allow Alcohol Wipe (6) residue to evaporate before applying Primer (7).



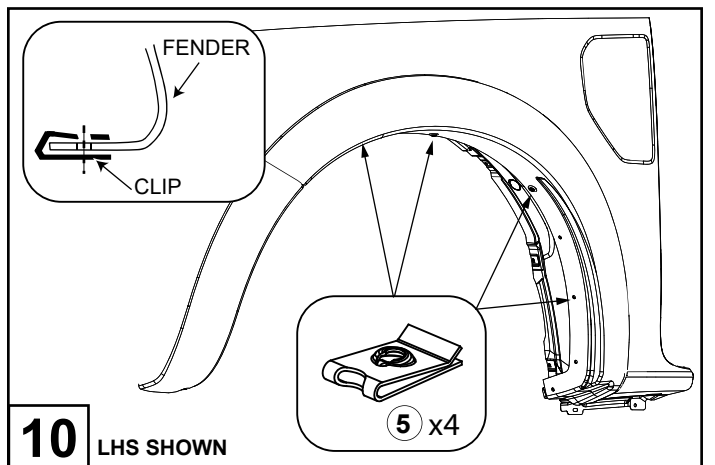
Remove approximately 50mm of the protective liner from the Extrusion (3). Gradually fit the extrusion to the flare along the edge that comes in contact with the vehicles body panel while gradually removing the liner to keep the extrusion adhered to the flare as per the above illustration.



Cut multiple triangle reliefs into the extrusion (as shown) to help the Fender Flare Extrusion (3) conform to the shape of the Front Fender Flare (2) as shown.

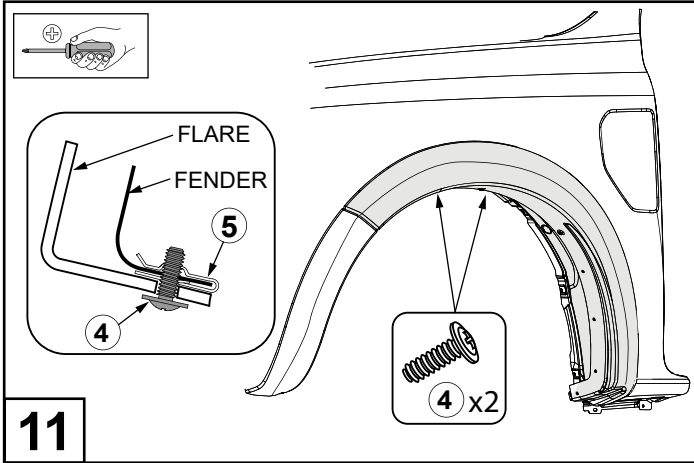


Cut multiple triangle reliefs into the extrusion (as shown) to help the Fender Flare Extrusion (3) conform to the shape of the Front Bumper Flare (1) as shown.



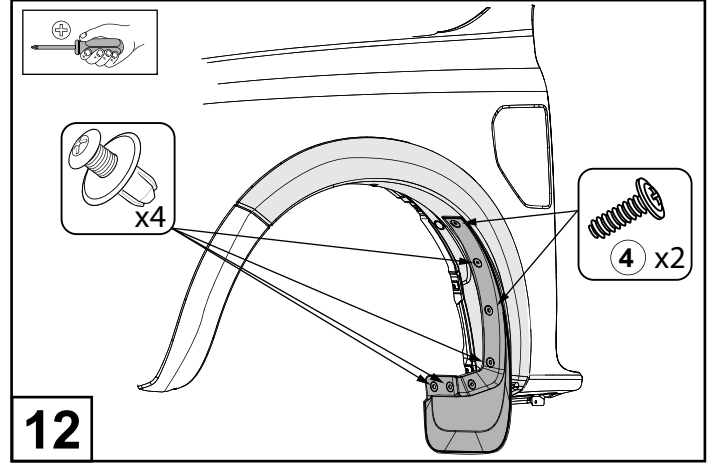
Hold the splash guard inwards and push the U-Nuts (5) into the four holes as shown.

FRONT FENDER FLARES INSTALLATION INSTRUCTIONS



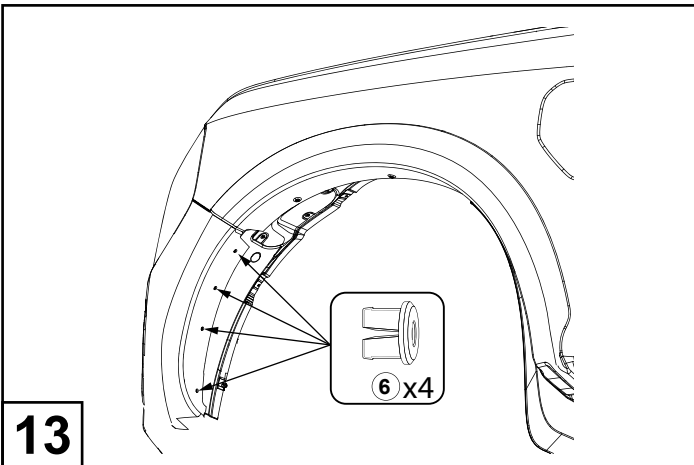
11

Install and secure the front flare to the vehicle as shown using two Screws (4).
 Note: if installing bolt-ons flares, see step 18 prior to installation.



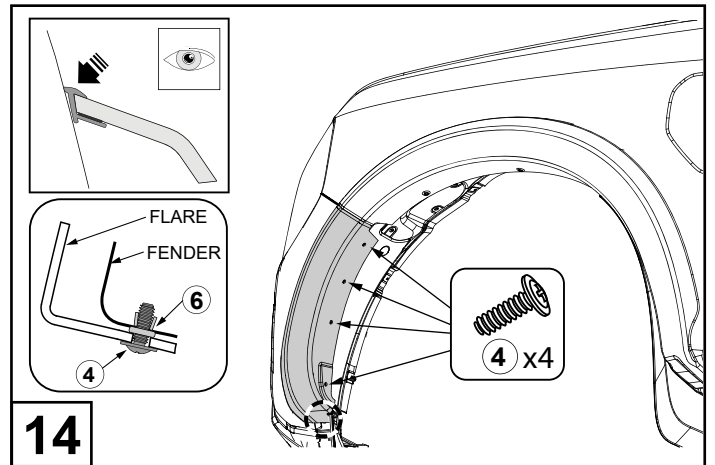
12

Install the Mudflap by placing it on top of the Fender Flare (2) so that the holes line up. Use 2 screws (4) and 4 previously retained scrivenets to secure the mudflap as shown.



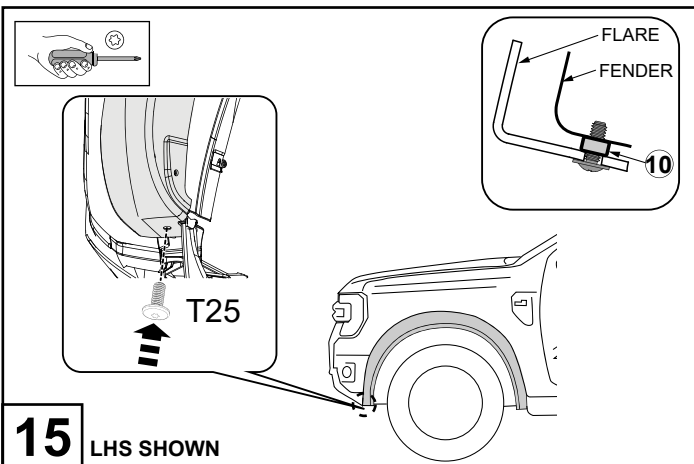
13

Insert 4x white plugs (6) into the holes shown.



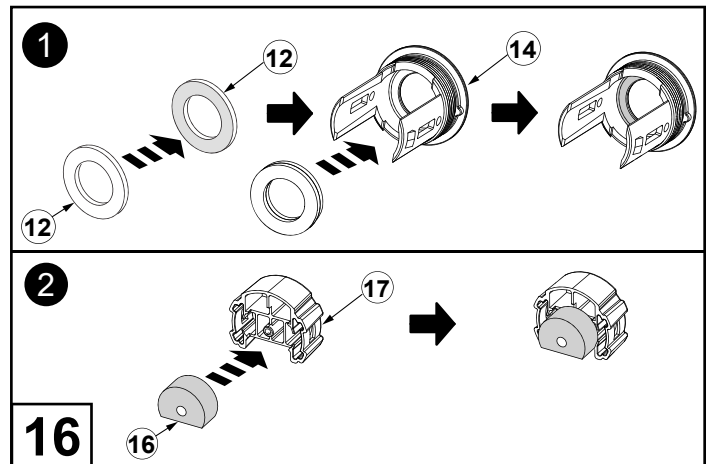
14

Secure the flare to the bumper using 4 screws (4).
 Note: Ensure that screws align with the white plugs (6).



15 LHS SHOWN

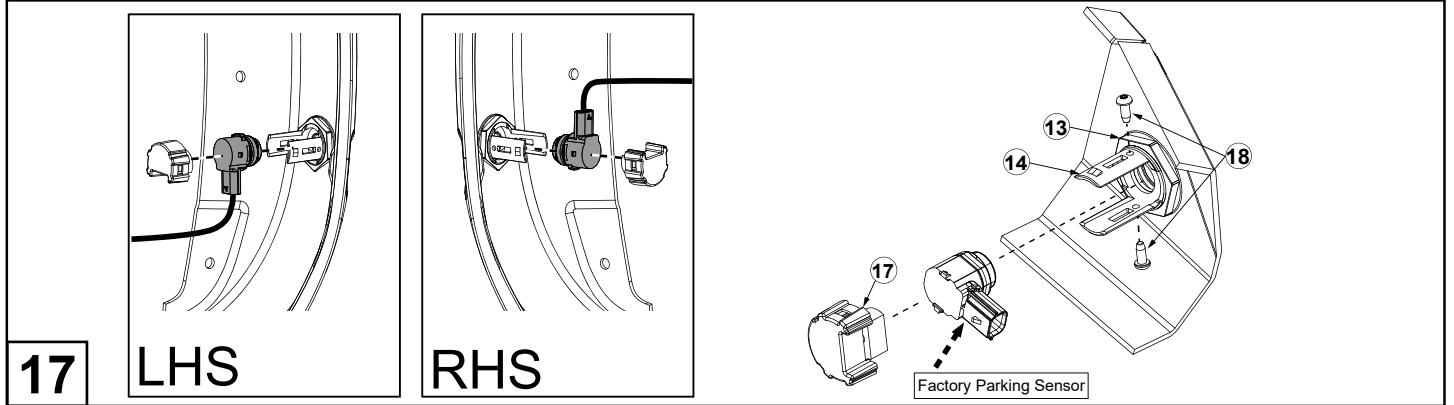
Place spacer (10) between the bottom of the flare and vehicle. Insert and tighten previously removed T25 torx screws as shown.



16

Attach two Foam Spacers (12) together, with the adhesive surfaces in contact with each other. Place the Foam Spacers (12) onto the Parking Sensor Bezel (14).
 Attach the Parking Sensor Rear Foam (16) to the Parking Sensor Cap (17).
 Repeat this for all the Parking Sensor Bezels (14) and Parking Sensor Caps (17).

FRONT FENDER FLARES INSTALLATION INSTRUCTIONS



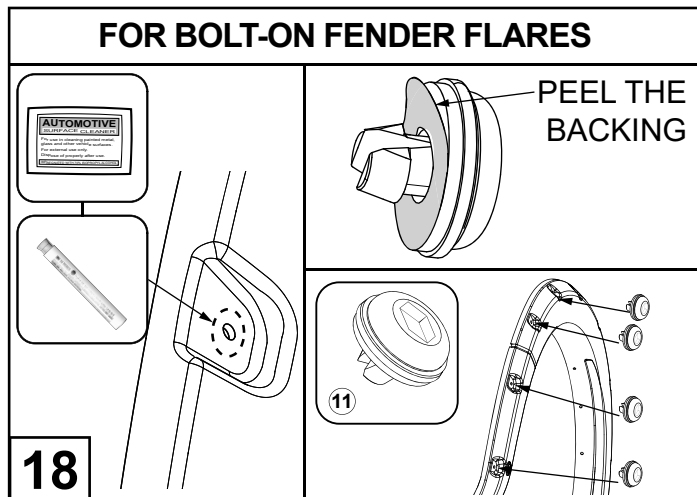
Loosely secure Parking Sensor Bezel (14) with the parking sensor bezel nut (13) to the flare.

IMPORTANT: For the left Parking Sensor Bezel (14), have the sensor connection point face downwards. For the right Parking Sensor Bezel (14) have the connection point face upwards.

Attach the factory parking sensor, followed by the Parking Sensor Cap (17). Secure the Factory Parking Sensor by screwing in two M4x10 Self Tapping T15 Torx Screws (18) into the Parking Sensor Bezel (14). Realign the Parking Sensor Bezel (14) then tighten the Bezel Nut (13) till secure.

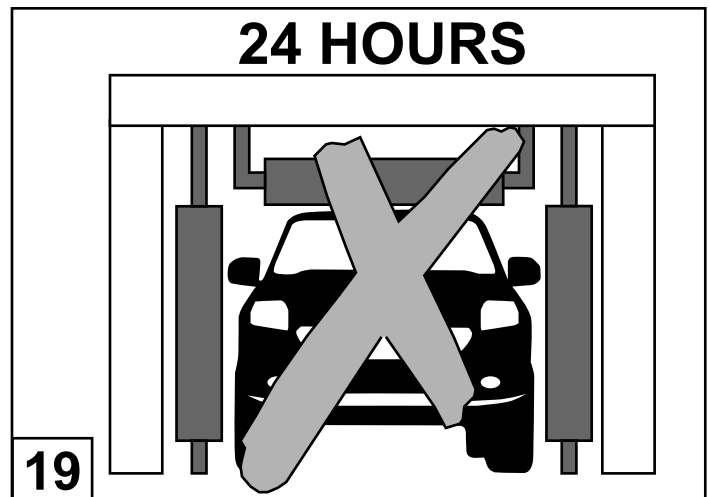
Note: Do not over tighten as this may damage the Parking Sensor.

Note: If there is no Parking Sensor present, simply press the Parking Sensor Blank (15) into the Parking Sensor Bezel (14).



Prime the Bolt Cap areas around the Flare. Peel the backing tape from the Bolt Cap. Firmly insert a Bolt Cap in each fender flare recess hole. Repeat this step on every fender flare.

Note: Insert bolt cap to fender flare before installing fender flares to vehicle.



Avoid agitation to the fitted Fender Flares (2), for example an automatic car wash or off road activity for at least 24 hours after fitting to ensure the Extrusion (2) adhesive cures completely.