

**FORD EVEREST MY22** →

# REAR FENDER FLARES INSTALLATION INSTRUCTIONS

## NOTES:

- Ensure that both left and right hand Fender Flares suit the profile of the vehicle. Note the areas where the Fender Flares come in contact with the vehicle.
- Before fitting Fender Flares remove any mouldings, strips or existing flares (unless specified otherwise) from the wheel arch. If there is a body side moulding, mark where the moulding is to be cut, alternatively the Fender Flares can be cut to go around the moulding. Make sure to allow enough room for the extrusion.
- Read instructions carefully. This product must be installed exactly as specified in these instructions. Failure to do so may result in improper fit and/or retention.

## PERSONAL PROTECTIVE EQUIPMENT:



Mask



Rubber Gloves



Goggles



Hearing Protection

## Care Instructions:



Clean vehicle with a mild detergent and water solution.

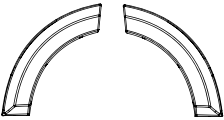
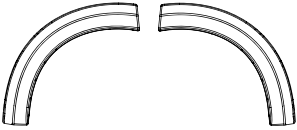
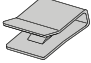









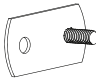



Do not use abrasive cleaners or solvents.

## Tools Required:

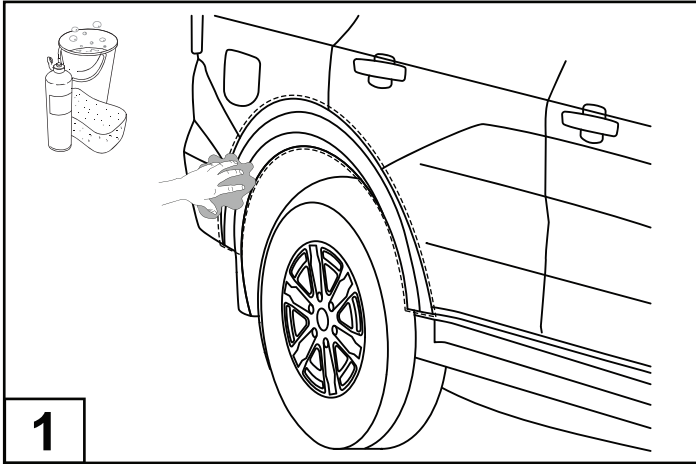
- |                                   |                |                         |
|-----------------------------------|----------------|-------------------------|
| • Mild Soapy Water & Clean Cloths | • Scissors     | • T25 Torx bit          |
| • Phillips head Screwdriver       | • Masking Tape | • 10mm Socket & Ratchet |
| • Non Permanent Marker            | • Ruler        | • Tin Snips             |

## REAR FENDER FLARES - HARDWARE KIT

NO.	COMPONENT	PART NUMBER	QTY	IMAGE
1	Rear Fender Flare (Door) (RHS & LHS)	—	2	
2	Rear Fender Flare (Fender) (RHS & LHS)	—	2	
3	U-Nut	CLIP1592PC	8	
4	Washer	WASH0130	2	
5	Extrusion	MISC4524	1	
6	Screw	SCRW0735	12	
7	Primer	MISC1365	2	
8	Alcohol Wipe	MISC0052	2	
9	Anti Abrasive Tape	TAPE0342	8	
10	M6 Nylock Nut	NUTS0190	2	
11	J-Nut	NUTS0198	12	
12	Scrivet	FAST0086	10	
13	Mud flap Strap	CLIP4050PC	2	
14	Fitting Instructions	FF982	1	

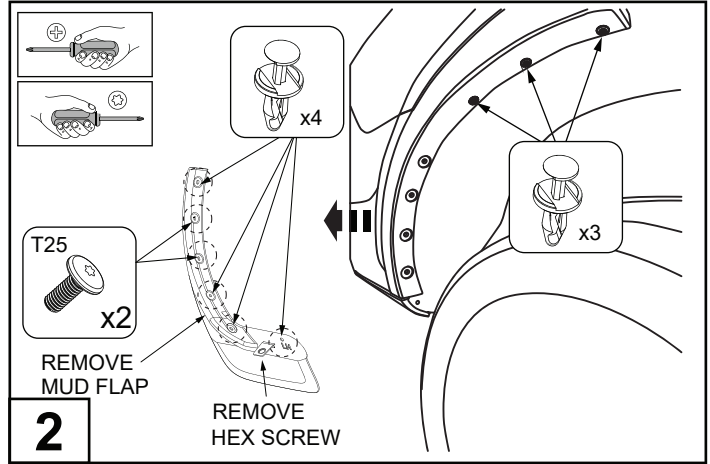
# REAR FENDER FLARES INSTALLATION INSTRUCTIONS

**⚠️ RHS INSTALLATION INSTRUCTIONS SHOWN. REPEAT ALL STEPS FOR THE LHS ⚠️**



**1**

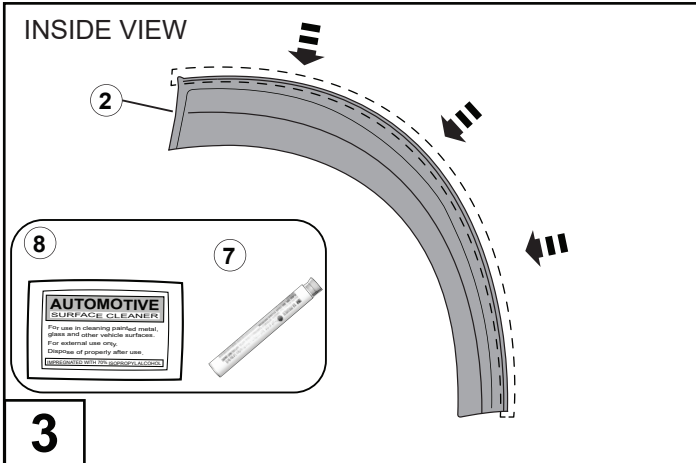
Wash the areas of contact on the vehicle and wipe dry both the vehicle and the Fender Flares with a clean cloth.



**2**

Remove the mud flaps by removing 7x scrivenets, 2x T25 torx screws from inside the wheel arch and 1x Hex Head Screw from underneath the vehicle. Retain 2x torx screws, discard scrivenets and hex screw.

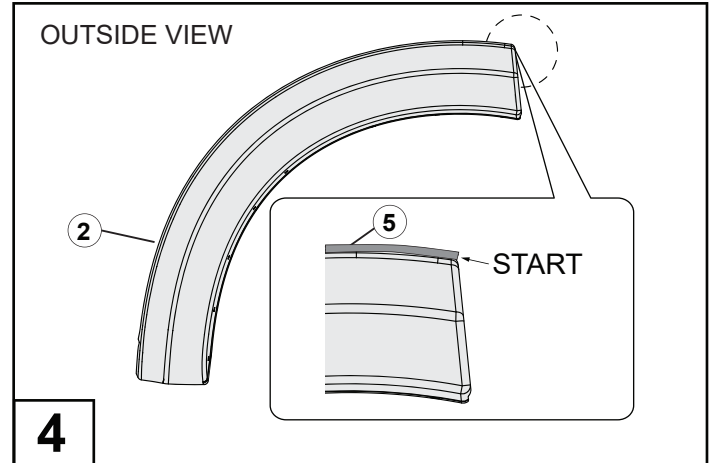
NOTE: Replacement scrivenets are supplied in case scrivenets are damaged upon removing from the vehicle.



**3**

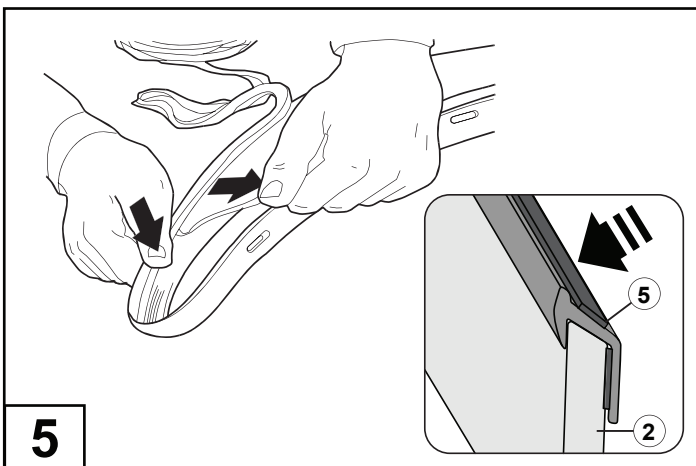
Clean the inner edge of the Rear Fender Flare (2) where the rubber extrusion will adhere with the Alcohol Wipe (8) and prime with the Primer Stick (7) supplied.

NOTE: allow the primer to dry (2 min) before proceeding.



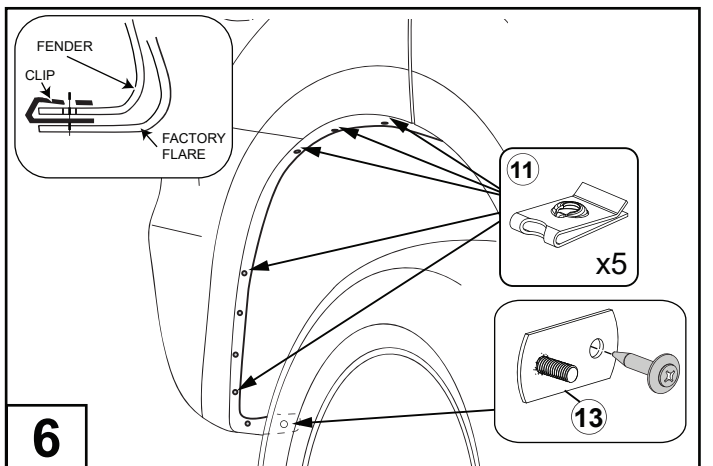
**4**

Remove approximately 50mm of the protective liner from the extrusion (5). Fit the extrusion (5) to the rear Fender Flare (2) along the edge that comes in contact with the vehicle's body panel. NOTE: Start applying the extrusion (5) from area shown above.



**5**

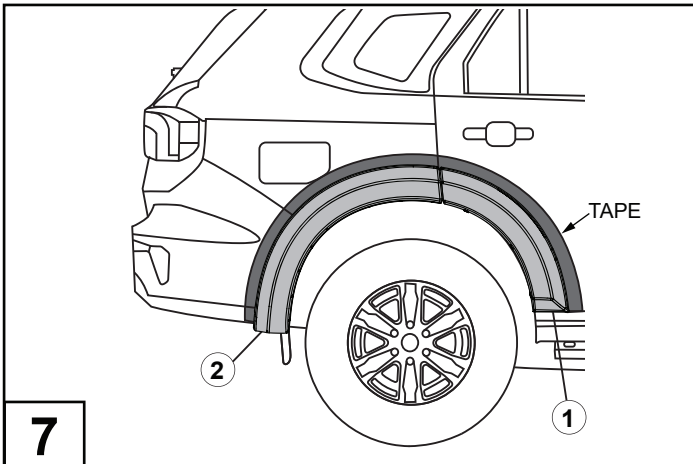
Pulling at right angle to the extrusion (5), remove the liner from the extrusion in small portions and apply thumb pressure to ensure that it adheres to the Fender Flare (2). Trim any unnecessary extrusion.



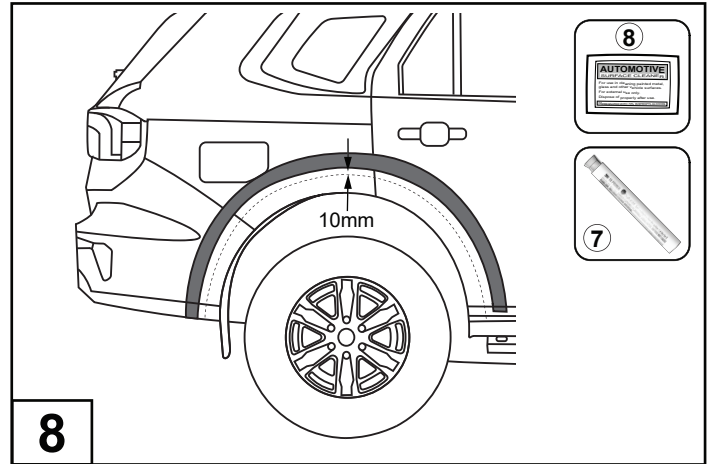
**6**

Install 5x J-Nuts (11) where shown. Make sure the hardware is installed into the inner holes on the Fender Flare (2). Fit the 1x Mud Flap Strap (13) to the vehicle as shown using retained vehicle scrivet.

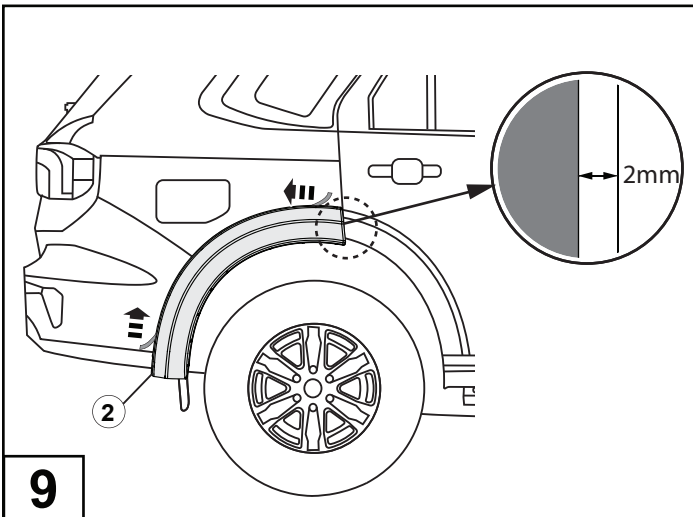
# REAR FENDER FLARES INSTALLATION INSTRUCTIONS



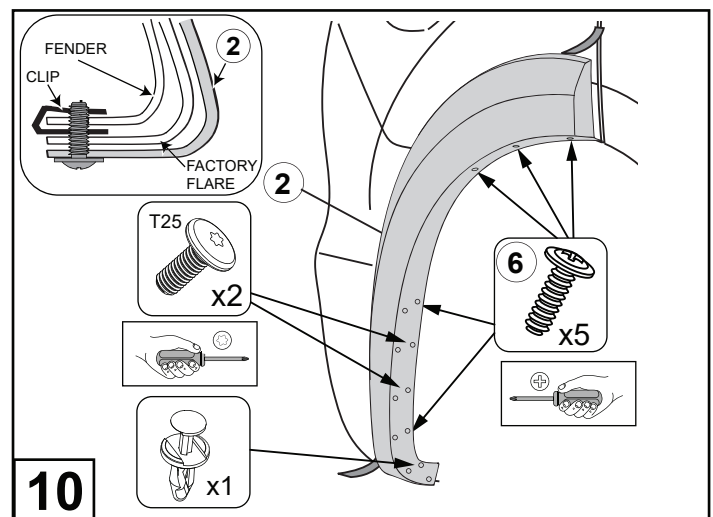
Place and hold the Rear Fender Flare (2) and Rear Door Flare (1) against the car and get a second person to mask the border around the outside perimeter of the flares using masking tape.



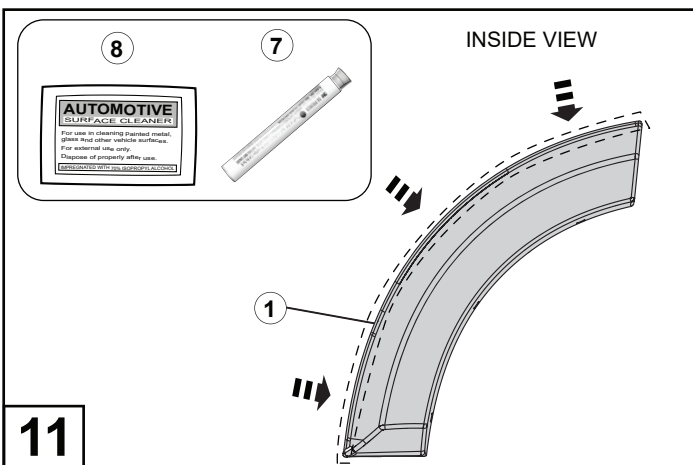
Remove the flares and use Alcohol Wipes (8) to clean 10mm of the area on inside side from the tape and apply a Primer Stick (7). NOTE: allow the primer to dry (2 min) before proceeding. Remove the masking tape.



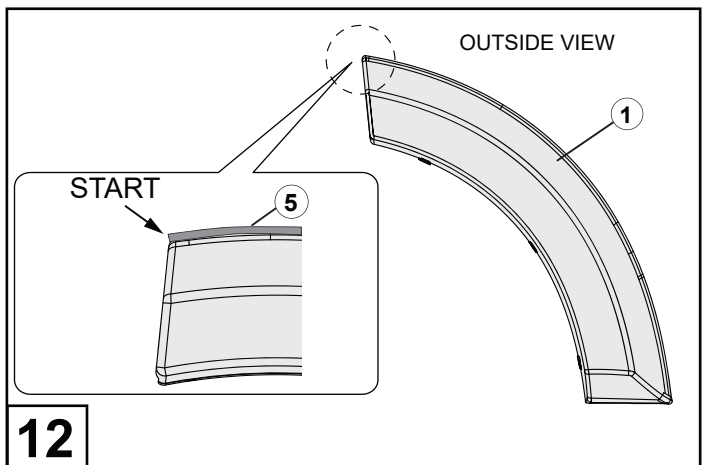
Mark 2mm from the edge of the fender. Peel back red tape liner, about 50mm from each corner of the adhesive tape on the back of the fender flare (2). Now fit the flare to the vehicle on the marked spot 2mm away from the rear fender edge. NOTE: Ensure the Fender Flare is fitted as per the recommended 2mm from edge to prevent the rear flares looking spaced too far apart.



Secure the Fender Flare (2) with 2x retained T25 screws and 5x Screws (6) as shown and 1x retained screw.

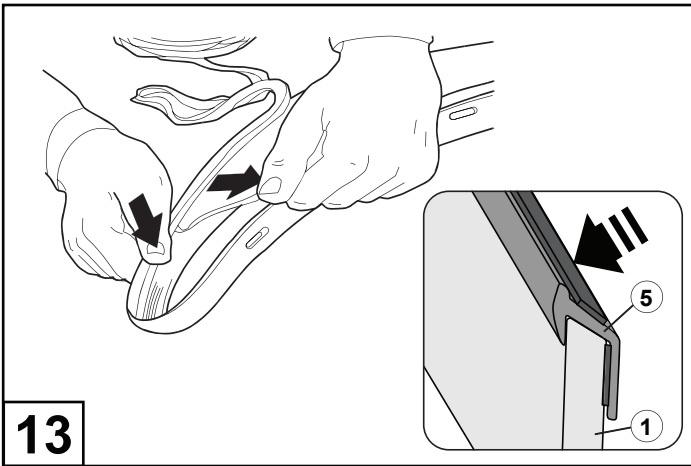


Clean the inner edge of the Rear Fender Flare (1) where the rubber extrusion will adhere with the Alcohol Wipe (8) and prime with the Primer Stick (7) supplied. NOTE: allow the primer to dry (2 min) before proceeding.



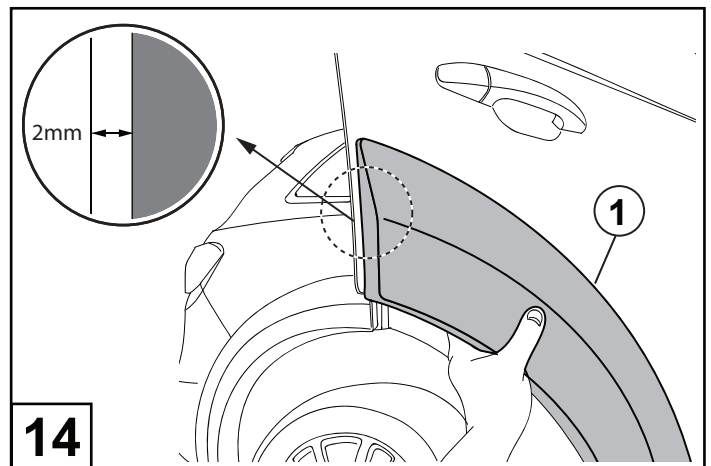
Remove approximately 50mm of the protective liner from the extrusion (5). Fit the extrusion (5) to the Door Fender Flare (1) along the edge that comes in contact with the vehicle's door. NOTE: Start applying the extrusion (5) from area shown above.

## REAR FENDER FLARES INSTALLATION INSTRUCTIONS



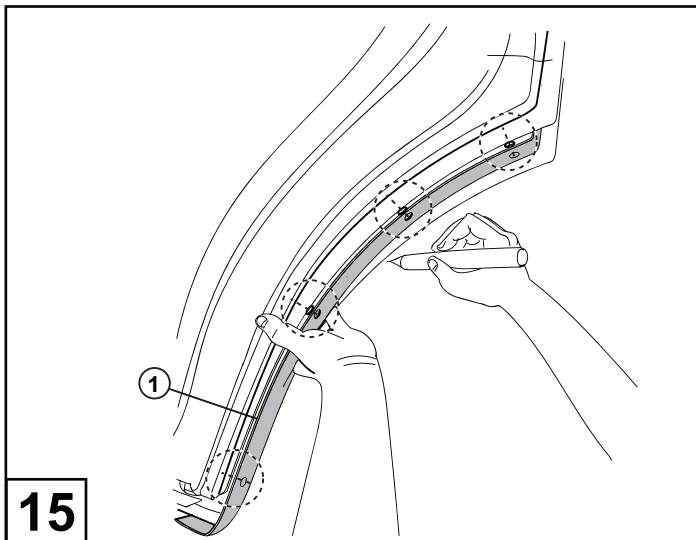
13

Pulling at right angle to the extrusion (5), remove the liner from the extrusion in small portions and apply thumb pressure to ensure that it adheres to the Fender Flare (1). Trim any unnecessary extrusion.



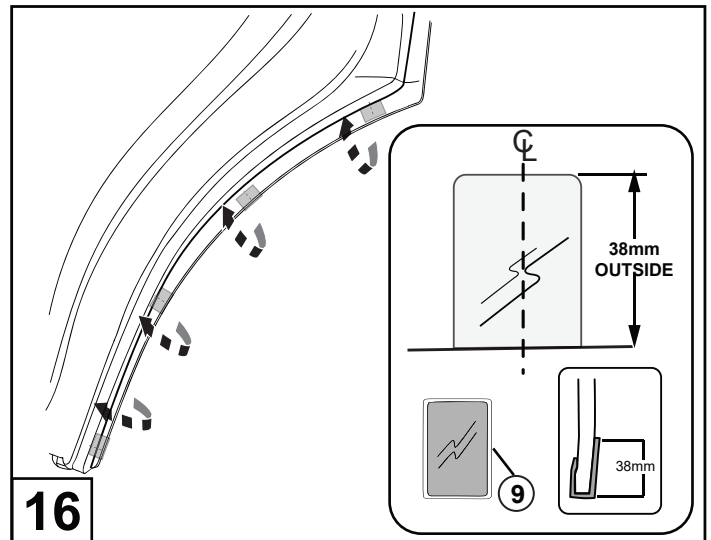
14

Position Fender Flare (1) against the door. Measure from the edge of the door to the Fender Flare as shown above. Ensure the Fender Flare is spaced 2mm away from the edge of the door. Mark the final position. NOTE: Ensure the flare is fitted as per the recommended 2mm from edge to prevent the rear flares looking spaced too far apart



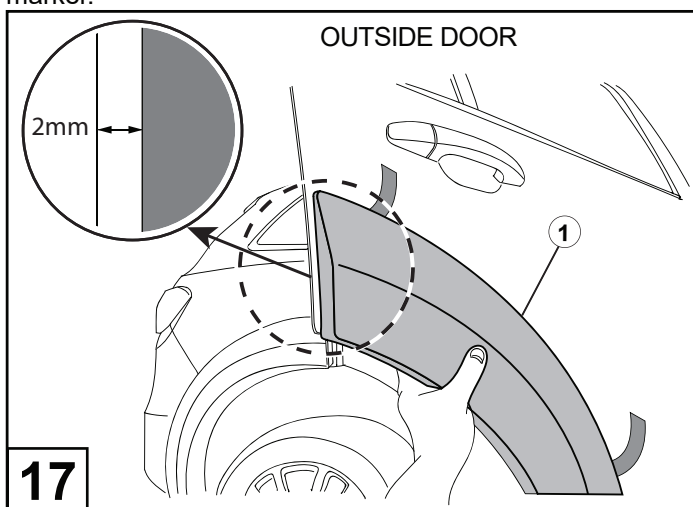
15

From the inside of the rear door hold the flare (1) in the position marked previously. Mark the position of the 4 holes in the flare against the inner door using a non permanent marker.



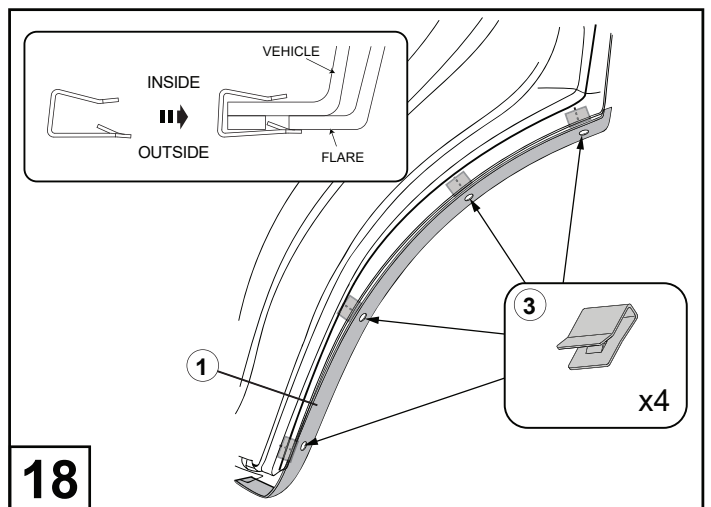
16

Apply 4x Anti Abrasive Tapes (9) over the door edge. Make sure the tapes are placed over the marked sections. Apply the tape as shown in detail.



17

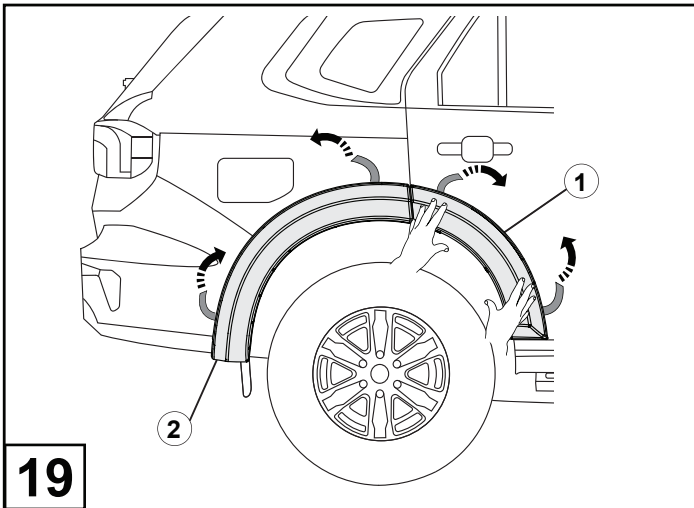
Fit Flare (1) to the rear door. Make sure the 2mm gap from flare to door edge is present.



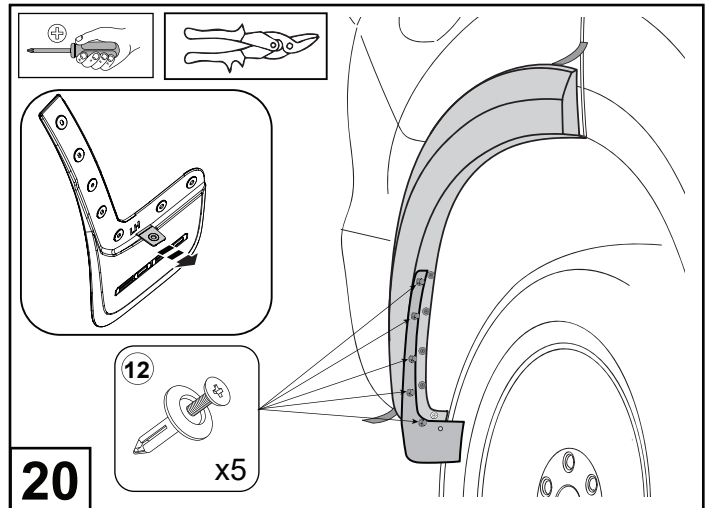
18

Push the 4x U-Nuts (3) through Flare (1) to vehicle. Over the Anti Abrasive Tapes. If the clip is loose on any of the locations, add an additional abrasive tape on top of the previous tape. NOTE: Ensure the barb on the clip engages with the slot in the fender flare.

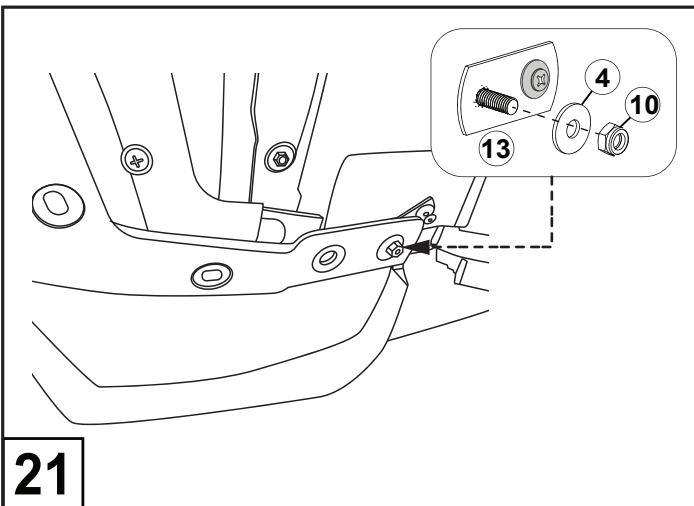
# REAR FENDER FLARES INSTALLATION INSTRUCTIONS



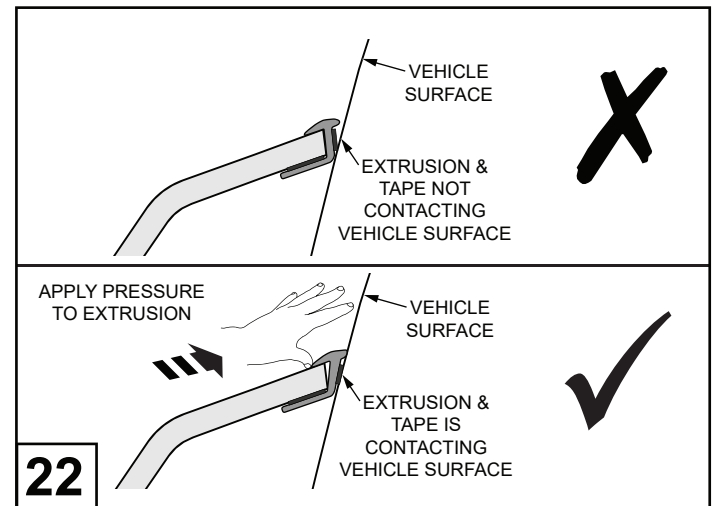
**19** Remove the tape liners by pulling up and out. Discard of the liners. Ensure you remove them front to back. Apply pressure to the Flare (1, 2) to ensure tape is fully seated maximum adhesion.



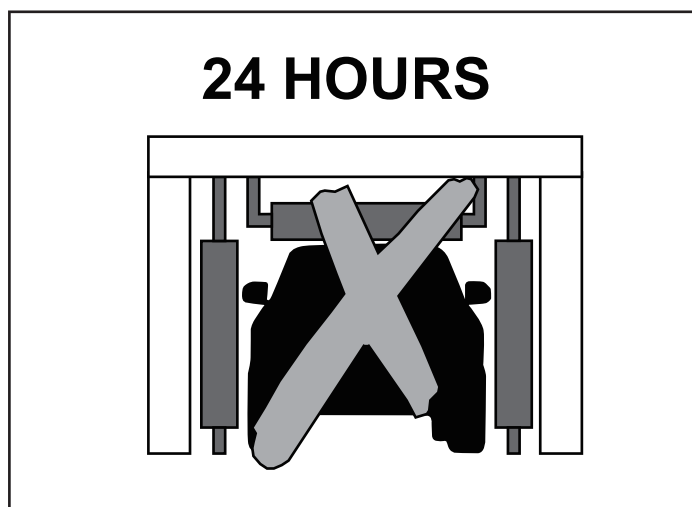
**20** Using tin snips cut off the tab located on the back of the mud flap. Align the mud flap to the fender flare. Secure by installing 5x screws (12) as shown.



**21** Secure mud flap to Mud Flap Strap (13) using 1x washer (4) and 1x M6 Nylock Nut (10) as shown. Torque to 1.5Nm.



**22** Apply pressure around edge of fender flare to achieve proper adhesion.



**24 HOURS**  
Avoid agitation to the fitted Fender Flares, for example an automatic car wash or off road activity for at least 24 hours after fitting to ensure the Extrusion adhesive cures completely.