

FOR VEHICLES WITH & WITHOUT Active park assist sensor
FORD EVEREST MY22 ➔

FRONT FENDER FLARES INSTALLATION INSTRUCTIONS

NOTES:

- Ensure that both left and right hand Fender Flares suit the profile of the vehicle. Note the areas where the Fender Flares come in contact with the vehicle.
- Before fitting Fender Flares remove any mouldings, strips or existing flares (unless specified otherwise) from the wheel arch. If there is a body side moulding, mark where the moulding is to be cut, alternatively the Fender Flares can be cut to go around the moulding. Make sure to allow enough room for the extrusion.
- Read instructions carefully. This product must be installed exactly as specified in these instructions. Failure to do so may result in improper fit and/or retention.

PERSONAL PROTECTIVE EQUIPMENT:



Mask



Rubber Gloves



Goggles



Hearing Protection

Care Instructions:



Clean vehicle with a mild detergent and water solution.


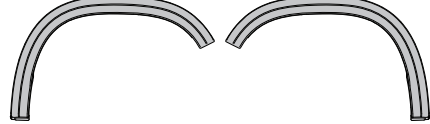






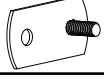


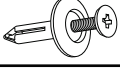



Do not use abrasive cleaners or solvents.



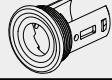




Tools Required:

- Mild Soapy Water & Clean Cloths
- Non Permanent Marker
- Phillips head Screwdriver
- Tin Snips
- Scissors
- Masking Tape
- Ruler
- T15 Torx Drive

FRONT FENDER FLARES - HARDWARE KIT

NO.	COMPONENT	PART NUMBER	QTY	IMAGE
1	Front Bumper Flares (RHS & LHS)	—	2	
2	Front Fender Flares (RHS & LHS)	—	2	
3	Extrusion	MISC4524	1	
4	Pan Head Screw	SCRW0735	20	
5	J-Nut	NUTS0198	12	
6	White Plug	FAST0041	8	
7	Primer	MISC1365	2	
8	Alcohol Wipe	MISC0052	2	
9	Mud Flap Strap	CLIP4050PC	2	
10	M6 Washer	WASH0130	2	
11	M6 Nylock Nut	NUTS0190	2	
12	Scrivet	FAST0086	10	
13	Installation Instructions	FF983	1	

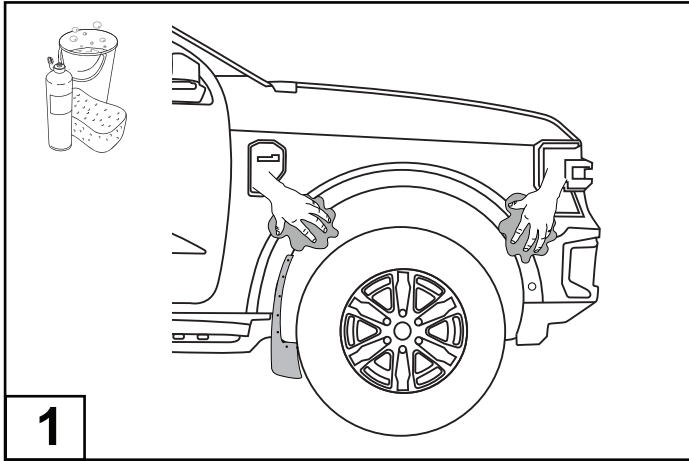
PARK ASSIST KIT

14	Foam Spacer	—	4	
15	Parking Sensor Bezel Nut	—	2	
16	Parking Sensor Bezel	—	2	
17	Parking Sensor Blank	—	2	
18	Parking Sensor Foam	—	2	
19	Parking Sensor Cap	—	2	
20	Parking Sensor Screw	—	4	

FRONT FENDER FLARES INSTALLATION INSTRUCTIONS

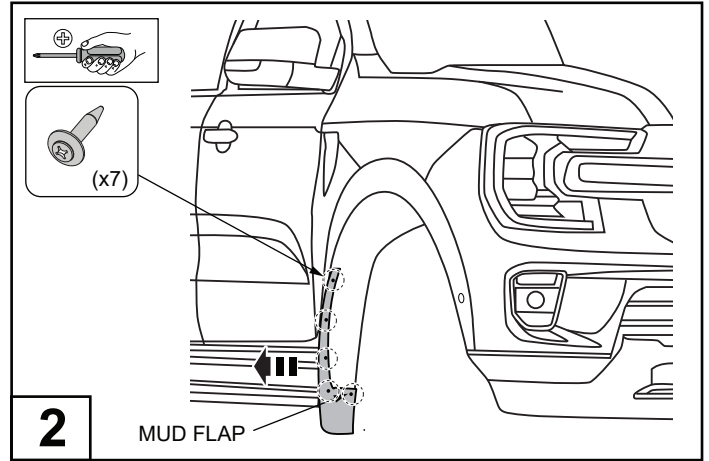


RHS INSTALLATION INSTRUCTIONS SHOWN. REPEAT ALL STEPS FOR THE LHS



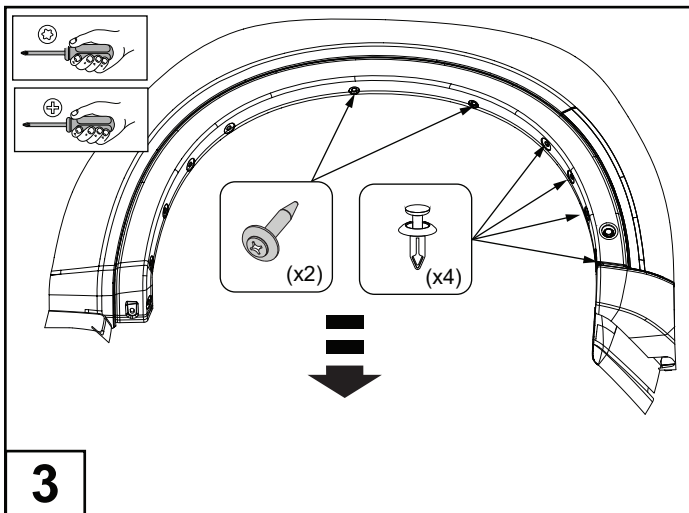
1

Wash the areas of contact on the vehicle, mud flap and Fender Flares (1, 2). Wipe dry with a clean cloth.



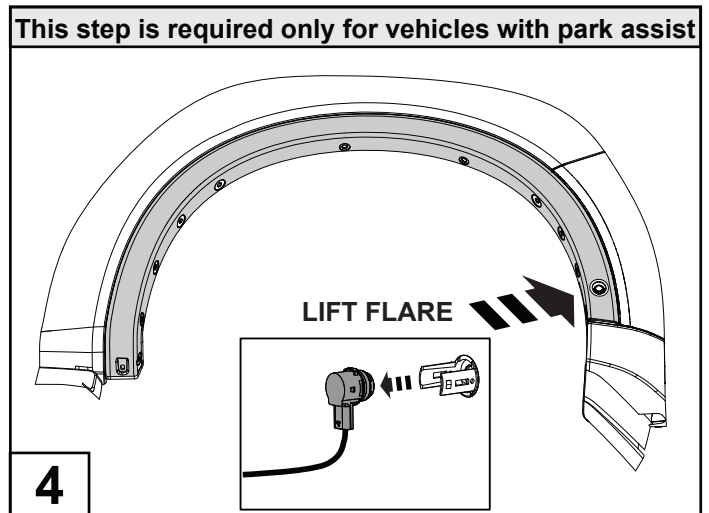
2

Remove the mud flaps by removing the 7x screws from inside the wheel arch as shown. Retain 1x screw and the mud flap. Discard 6x screws.



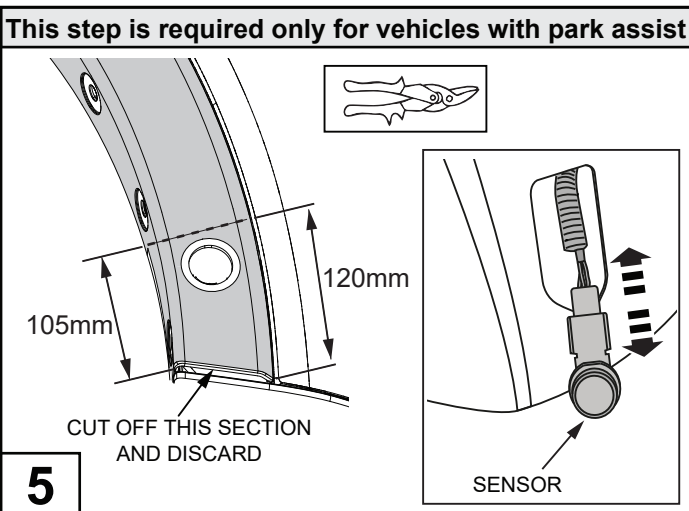
3

Remove the 6x screws from the inside the wheel arch. Discard hardware.



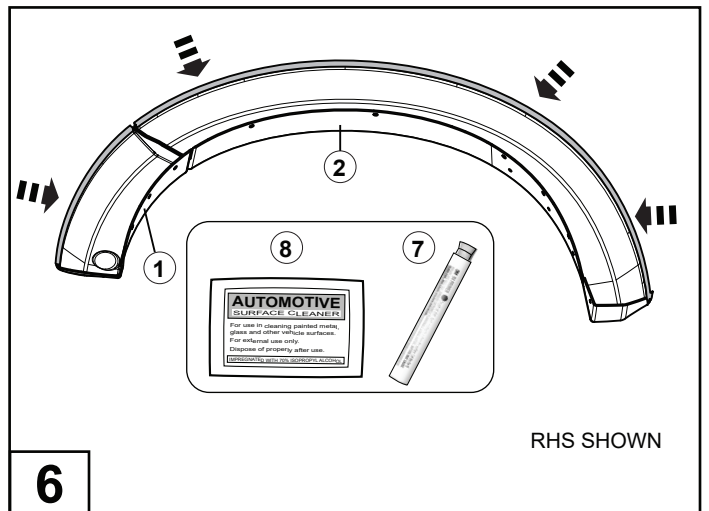
4

Pull the front part of the factory fender flare just far enough to unplug the parking sensor.



5

Mark a trim line on the fender flare as shown and trim using tin snips. Discard the bottom part. Unplug the Sensor from the Vehicle Harness and store for reuse later.



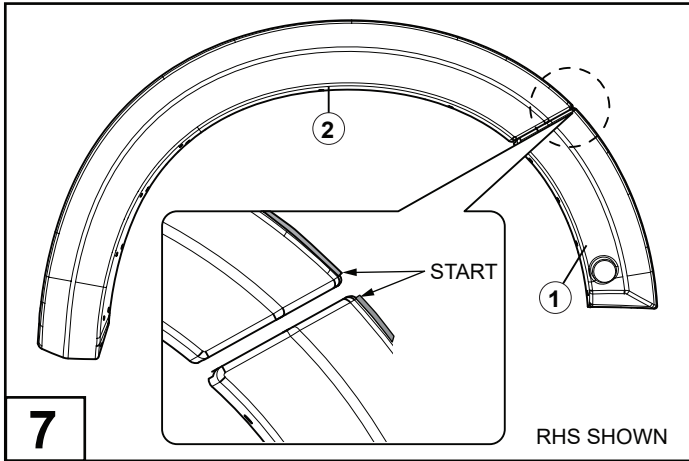
6

Clean the inside edge of each Fender Flare (1, 2) where the rubber extrusion (3) will adhere with the Alcohol wipe (8) and apply primer (7).

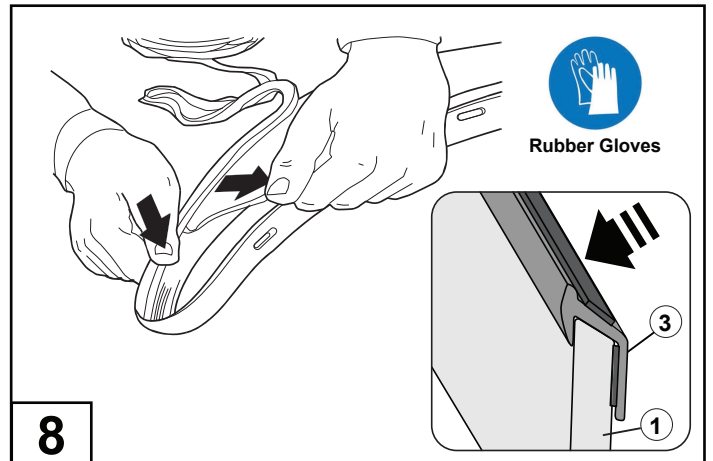
NOTE: allow the primer to dry (2 min) before proceeding.

RHS SHOWN

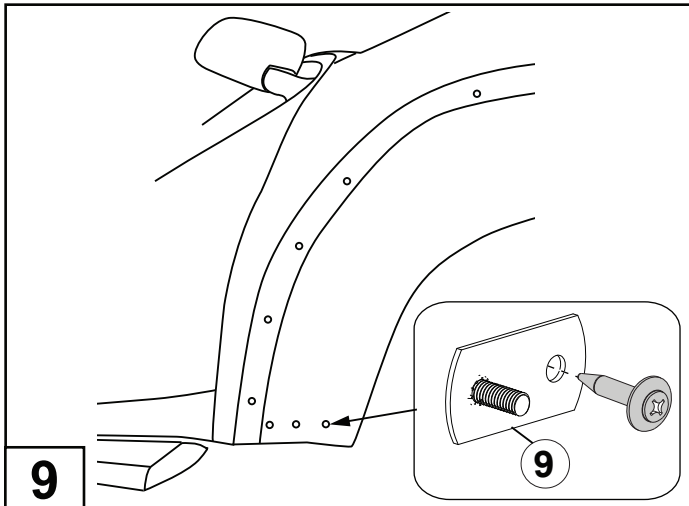
FRONT FENDER FLARES INSTALLATION INSTRUCTIONS



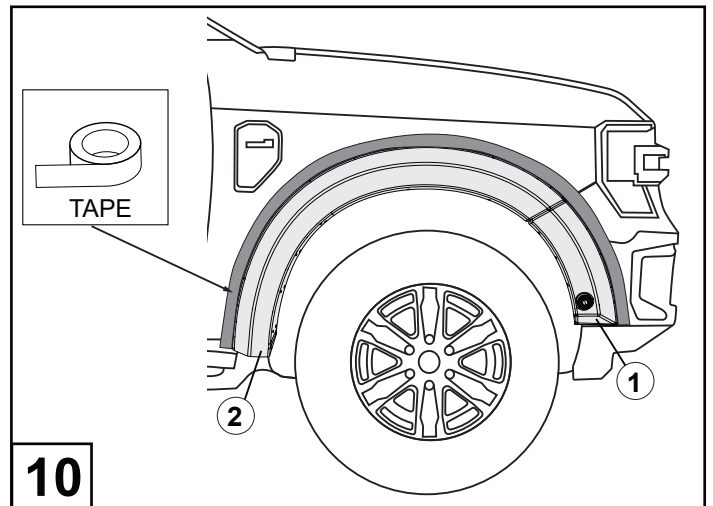
7 Remove approximately 50mm of the protective liner from the extrusion (3). Fit the extrusion to the Fender Flare (1, 2) along the edge that comes in contact with the vehicle's body panel. NOTE: Start applying the extrusion (3) from area shown above.



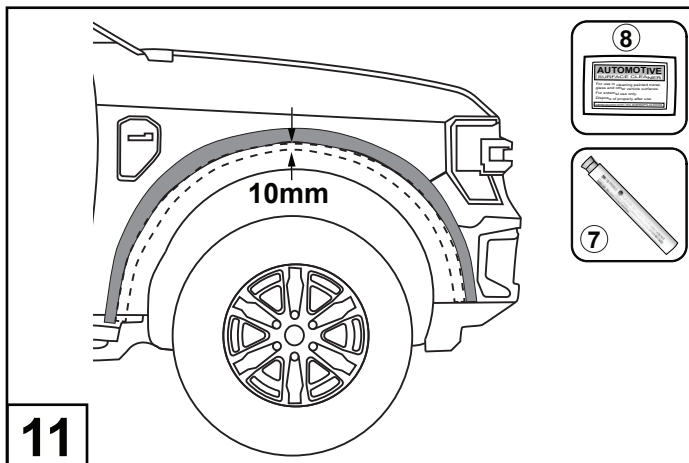
8 Pulling at right angle to the extrusion (3), remove the liner from the extrusion in small portions and apply thumb pressure to ensure that it adheres to the Fender Flare (1, 2). Trim any unnecessary extrusion and discard.



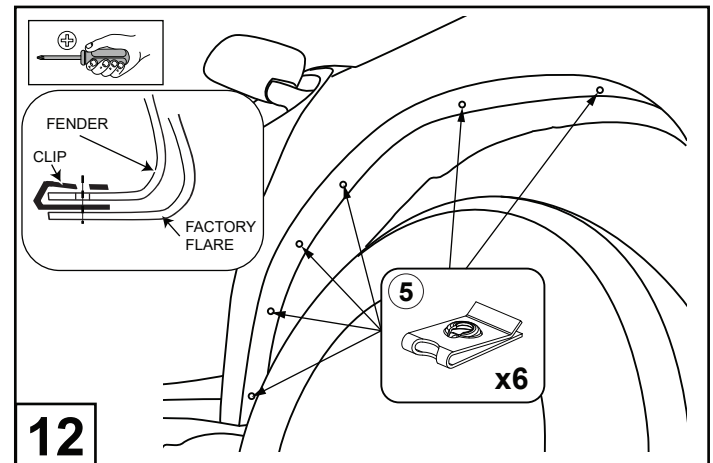
9 Fit the Mud Flap Strap (9) to the wheel splash guard existing hole as shown using retained vehicle scrivet.



10 Place and hold the Front Fender Flare (1) and Front Bumper Flare (2) against the car and get a second person to mask the border around the outside of the flares perimeter using masking tape.

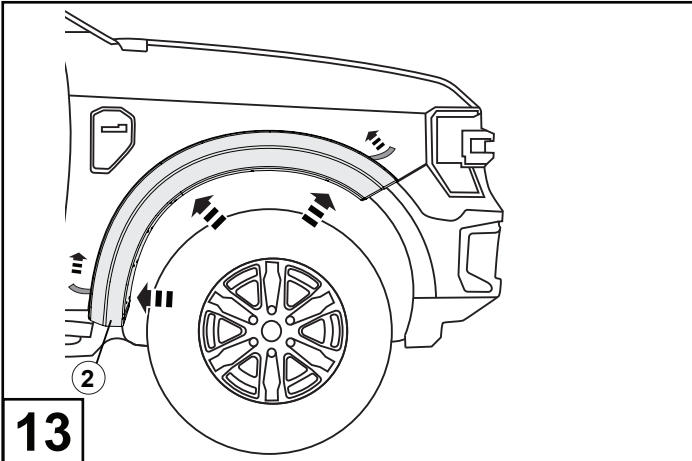


11 Remove the flares and use Alcohol Wipes (8) to clean 10mm of the area on inside side from the tape and apply a Primer (7). NOTE: allow the primer to dry (2 min) before proceeding.

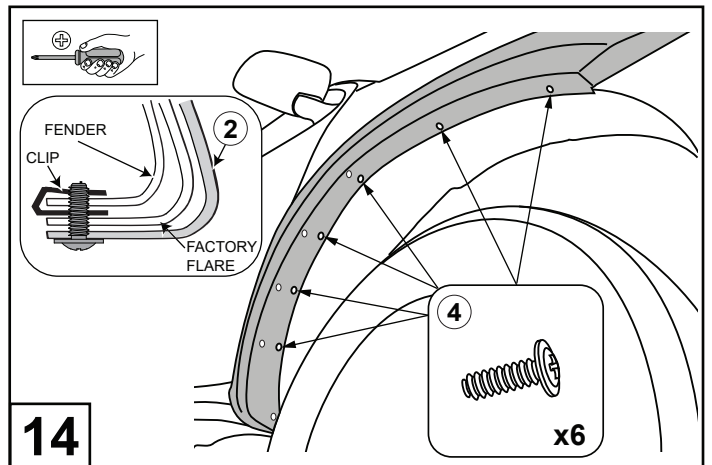


12 Push the 6x J-Nuts (5) over the edge of the factory fender as shown and align with existing holes. Push back plastic guard for easier access.

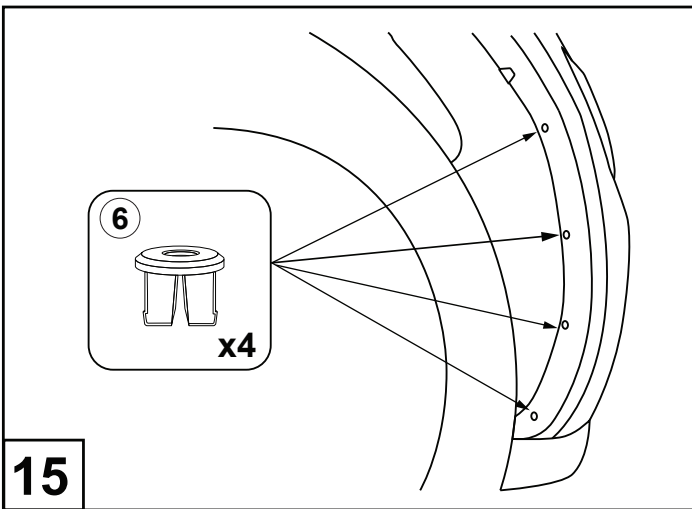
FRONT FENDER FLARES INSTALLATION INSTRUCTIONS



13 Peel back red tape liner, about 50mm from each corner of the adhesive tape on the back of the fender flare extrusion. Fit the front fender flare to the vehicle as shown.

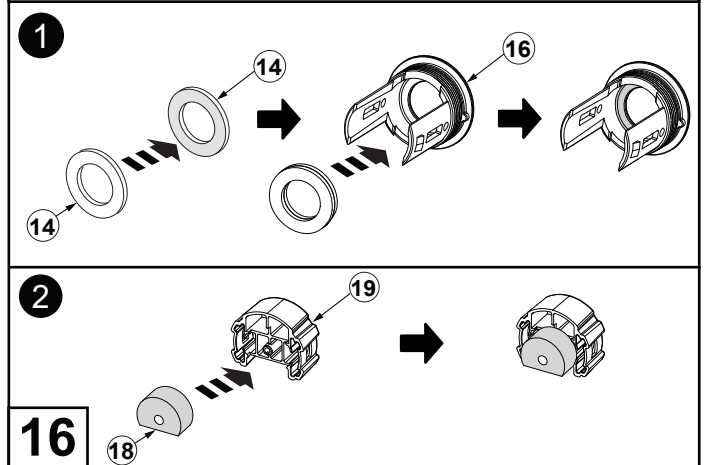


14 Secure the Fender Flare with 6x Screws (4) as shown.



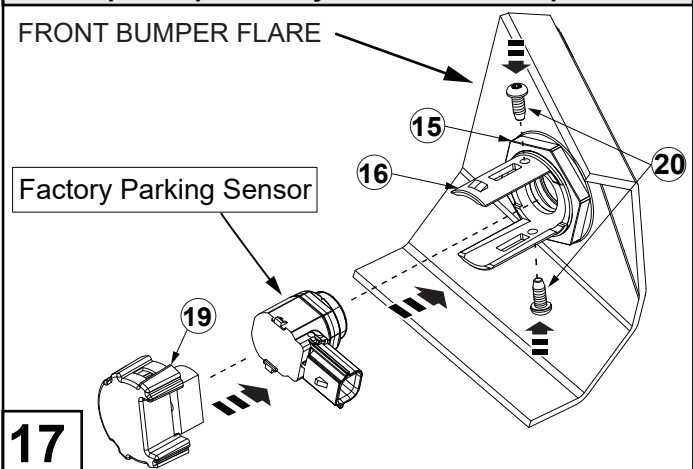
15 Install 4x plugs (6) in the locations shown.

This step is required only for vehicles with park assist



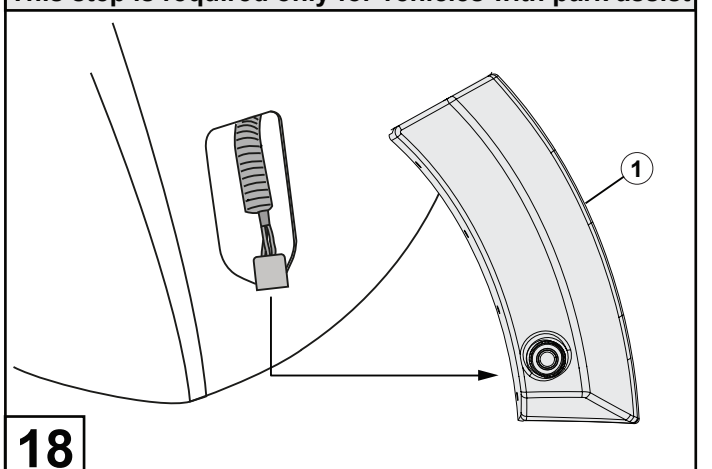
16 Attach two Foam Spacers (14) together, with the adhesive surfaces in contact with each other. Insert the two Foam Spacers (14) into the Parking Sensor Bezel (16). Remove the adhesive backing tape from the Foam Spacer (18) and insert it into the Parking Sensor Cap (19).

This step is required only for vehicles with park assist



17 Fit the Parking Sensor Bezel (16) into the Front Bumper Flare (1) from the outside face. Secure with the Bezel Nut (15). Insert the Factory Parking Sensor, followed by the Parking Sensor Cap (19) until it will clip into position. Secure with two screws (20) as shown. Use T15 Torx bit. Do not over tighten as it may damage the sensor.

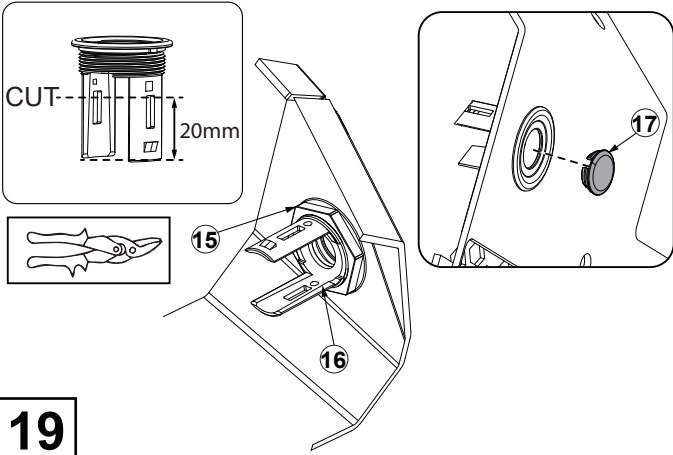
This step is required only for vehicles with park assist



18 Connect the Parking Sensor Vehicle Harness to the Sensor in the Front Bumper Flare (1). Go to step 20.

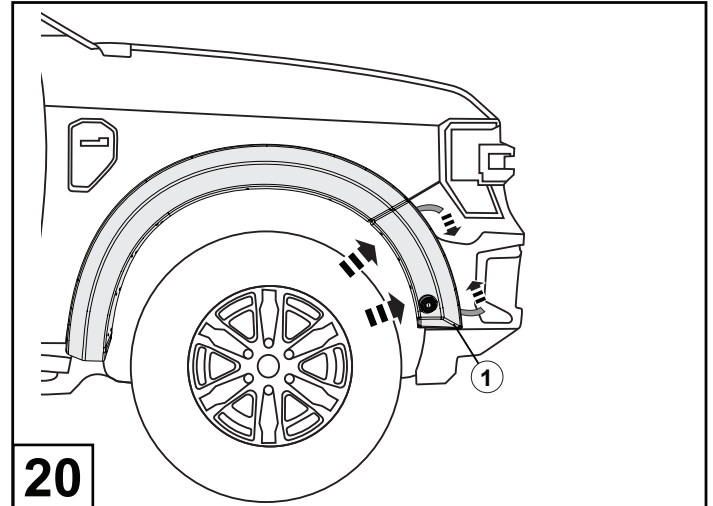
FRONT FENDER FLARES INSTALLATION INSTRUCTIONS

This step is required only for vehicles without park assist



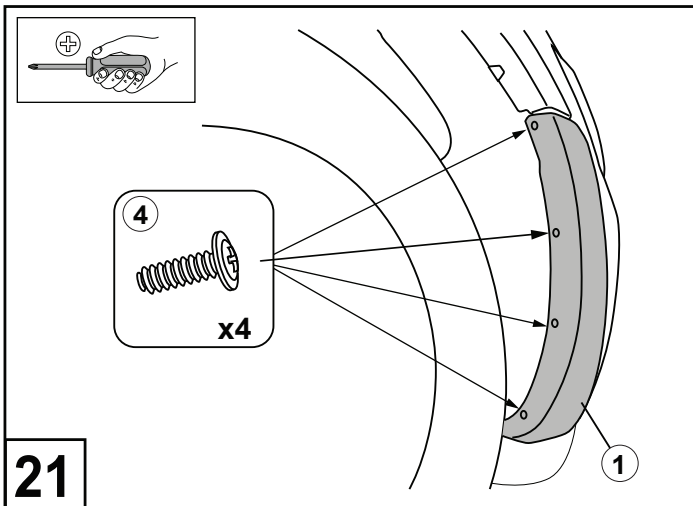
19

Using tin snips cut the parking sensor bezel as shown by 20mm. Secure parking sensor bezel (15) with the parking sensor bezel nut (13) on the fender flare. Insert the Sensor Blank (17) into the parking sensor bezel (16).



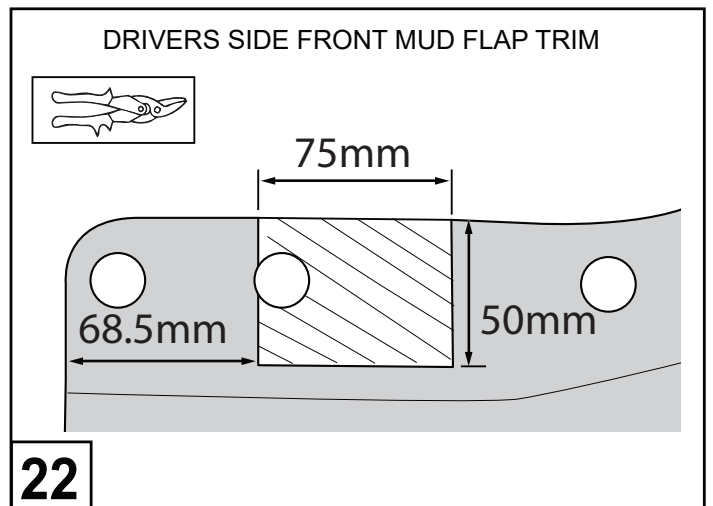
20

Peel back red tape liner, about 50mm from each corner of the adhesive tape on the back of the fender flare. Fit the Front Bumper Flare (1) to the vehicle as shown.



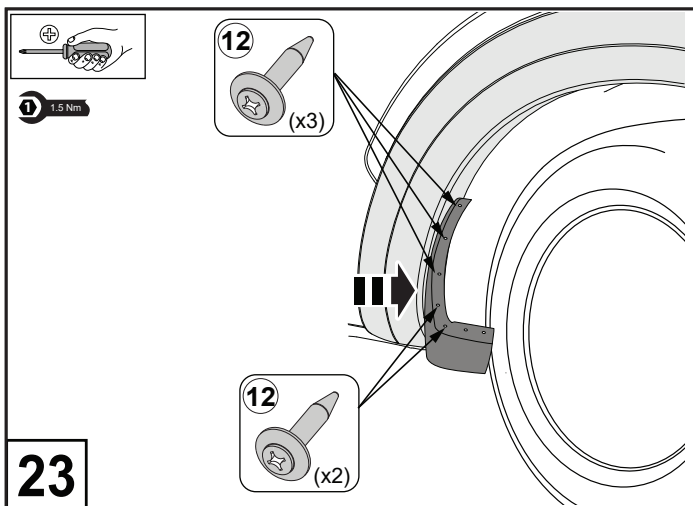
21

Hold the Bumper Flare (1) in the correct position ensuring the trim matches the bumper. Install 4x Screws (4) as shown.



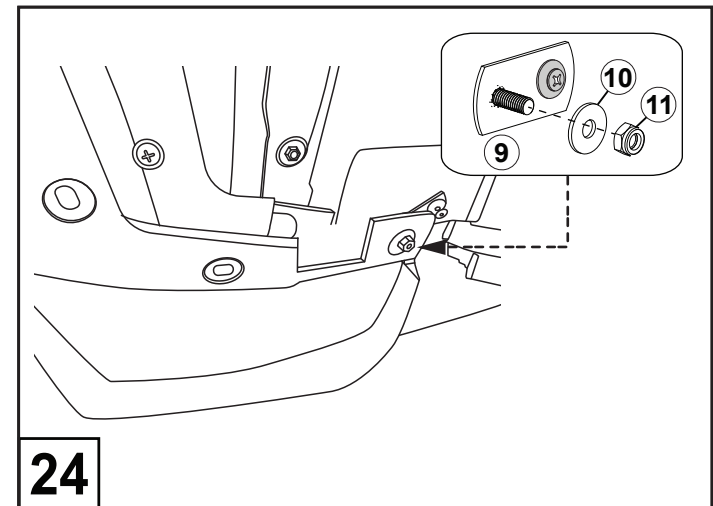
22

Measure and mark the dimensions on the RHS mud flap as shown. Note: cover the marking area with masking tape. Using tin snips remove the hatched area. Once trimming is done, remove all the masking tape. Repeat for the LHS mud flap.



23

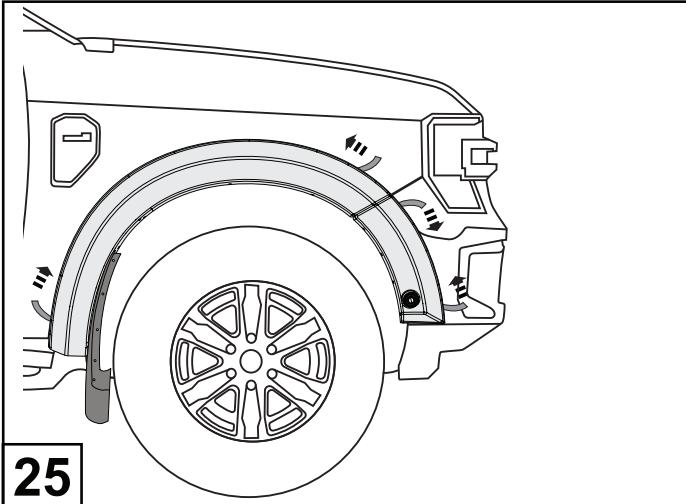
Secure the mud flap to the Fender Flare (2) with 5x scrivers (12).



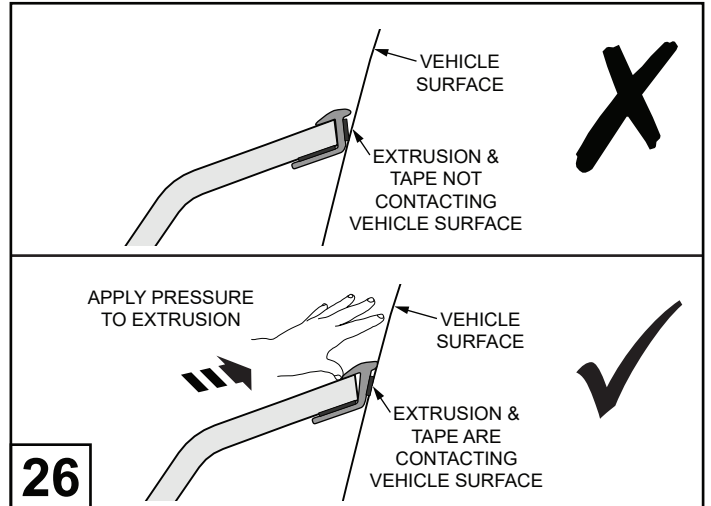
24

Secure mud flap to Mud Flap Strap (9) using 1x washer (10) and 1x M6 Nylock Nut (11) as shown. Torque to 1.5Nm.

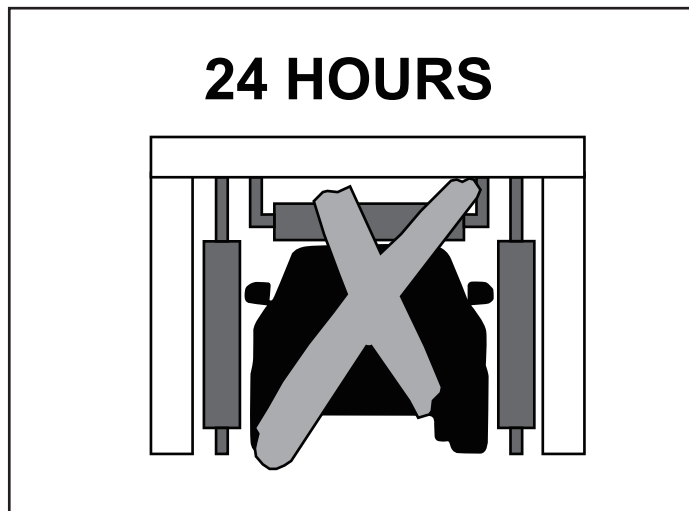
FRONT FENDER FLARES INSTALLATION INSTRUCTIONS



Remove tape lining from the extrusion (3).



Apply pressure around edge of fender flare to achieve proper adhesion.



Avoid agitation to the fitted Fender Flares, for example an automatic car wash or off road activity for at least 24 hours after fitting to ensure the Extrusion adhesive cures completely.