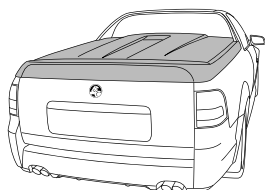
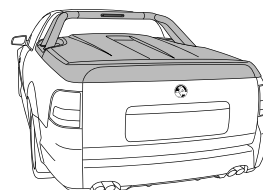


RETRO FIT REMOTE LOCKING 1PC/3PC TONNEAU COVER INSTALLATION INSTRUCTIONS



Holden VE Ute 2007

Part Number: EGR-RETROLOCK



Care Instructions:



Clean Tonneau Cover with a mild detergent and water solution.



Do not use abrasive cleaners or solvents.

Place these instructions in vehicle's glove box after installation is complete

LIST OF PARTS

Item	Component Name	Qty	Item	Component Name	Qty
1	Vehicle Wiring Harness	1	11	Star Washer	1
2	Tonneau Wiring Harness	1	12	Lock Cam with Ball Stud	1
3	Interior Light	1	13	Plastic Spacer	1
4	Rubber Gasket	1	14	Module	1
5	Actuator Assembly	1	15	Rivets	4
6	P-Clips	15	16	Gas Strut	1
7	Short Self-Tapping Screws	15	17	Pullrod Clip	1
8	Long Self-Tapping Screws	2	18	Bedrail Foam Tape	1
9	Phillips Head Screw	1	19	Actuator Bracket	1
10	Flat Washer	1	20	M6 Phillips Head Screw	3

RECOMMENDED TOOL LIST

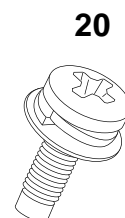
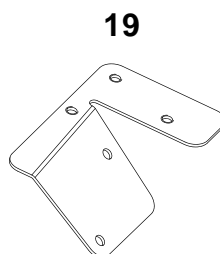
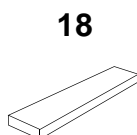
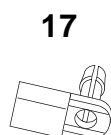
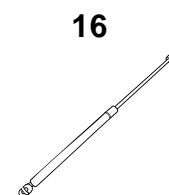
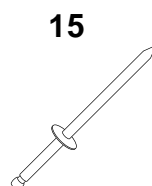
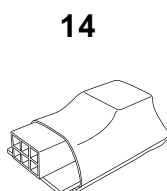
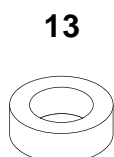
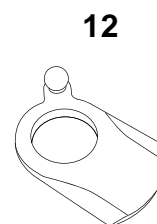
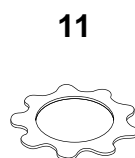
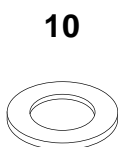
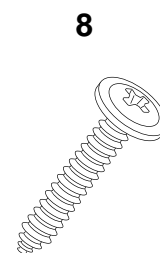
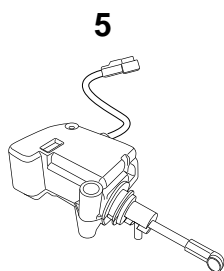
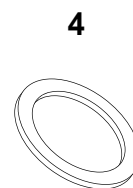
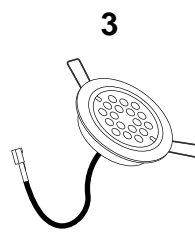
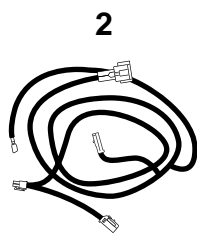
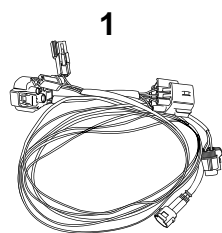
Drill with Ø3, Ø6, Ø12 & Ø14mm Drill Bits	Flat Head Screwdriver	Spanners & Sockets
Masking Tape	Tape Measure	File
Phillips Head Screwdriver	Torx Head Screwdriver and Bits	Scissors
Rivet Gun		

IMPORTANT:

- Read instructions carefully before installation. It is strongly recommended that installation is conducted by an authorized dealer.
- This product must be installed exactly as specified in these instructions. Failure to do so may result in improper fit and/or retention.
- Recommend installation by 2 people.
- Do not cycle remote key fob continuously or the actuator for operation of the remote locking system will burn out.

Maintenance:

The locking mechanisms & Latches only require occasional lubrication with Graphite Powder.
DO NOT use any other lubricants or oils.
Using alternative products will VOID Warranty.



RETRO FIT REMOTE LOCKING 1PC/3PC TONNEAU COVER

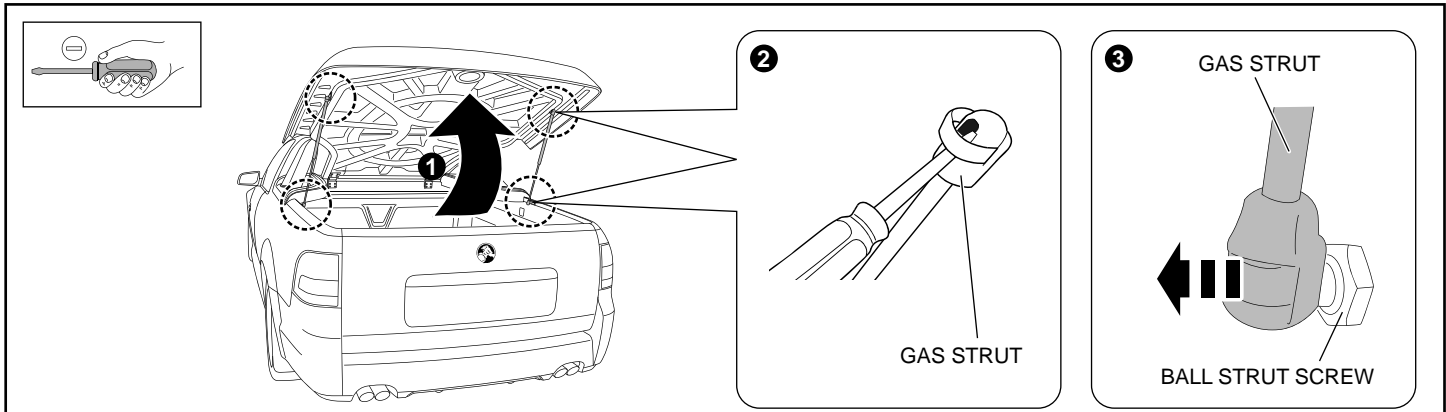


Diagram #1

1. Open Tonneau Cover and detach gas struts by inserting a small screw driver and adjusting the spring clip on the strut as shown. **See Dia #1. NOTE: Do not remove the spring clip. Only a small amount of levering is required to detach.**

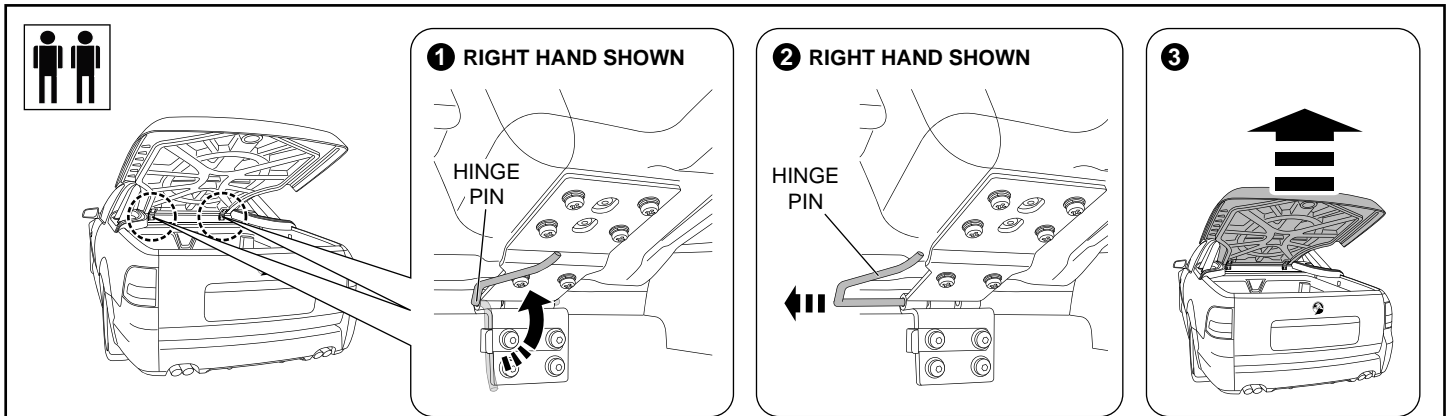


Diagram #2

2. Remove hinge pins and then remove the Tonneau Cover as shown. **See Dia #2.**

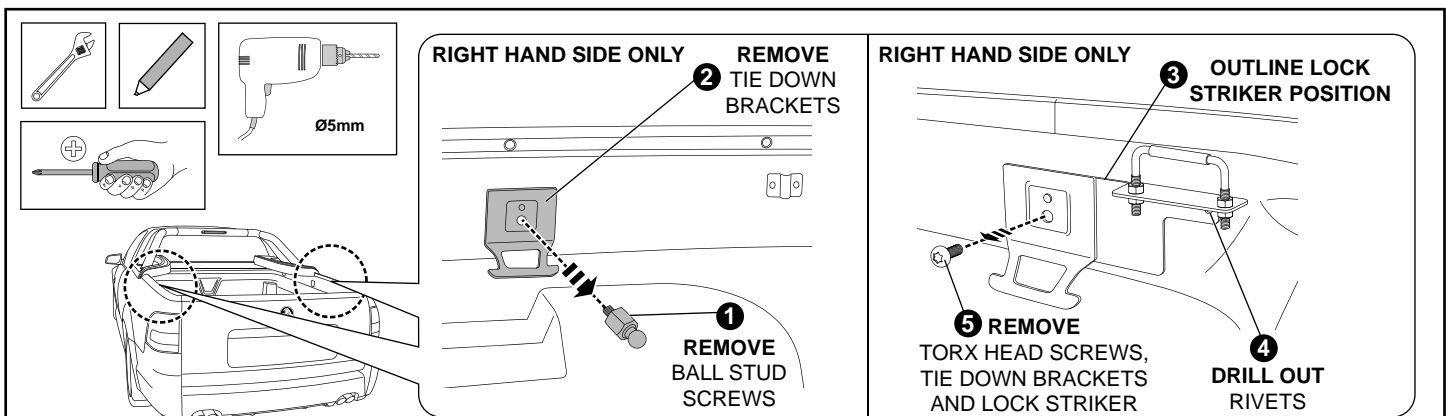


Diagram #3

3. Remove and retain the ball stud screws and the tie down brackets from the right hand side of the tub as shown. Outline the position of the right hand side lock striker bracket, drill out the rivet holding it in place. Remove and retain Torx head screw, tie down bracket and lock striker. **See Dia #3.**

RETRO FIT REMOTE LOCKING 1PC/3PC TONNEAU COVER

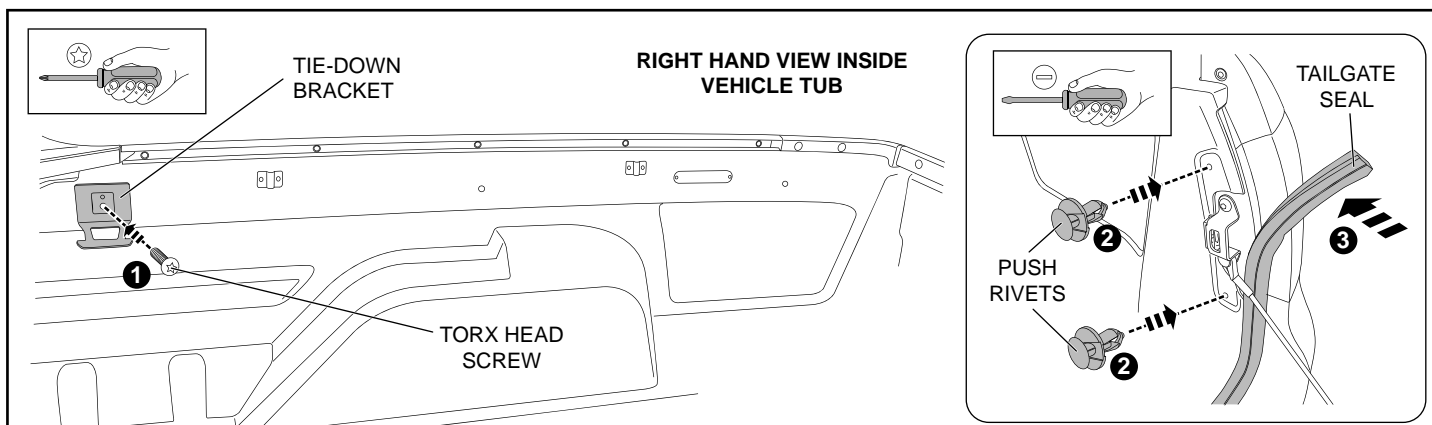


Diagram #4

4. Remove and retain the remaining tie-down bracket on the right hand side of the bed using a torx-head screwdriver as shown. Open the vehicle's tailgate and remove and retain the two (2) push rivets and peel back the rubber tailgate seal as far as the base of the tailgate as shown for the right hand side only. **See Dia #4.**

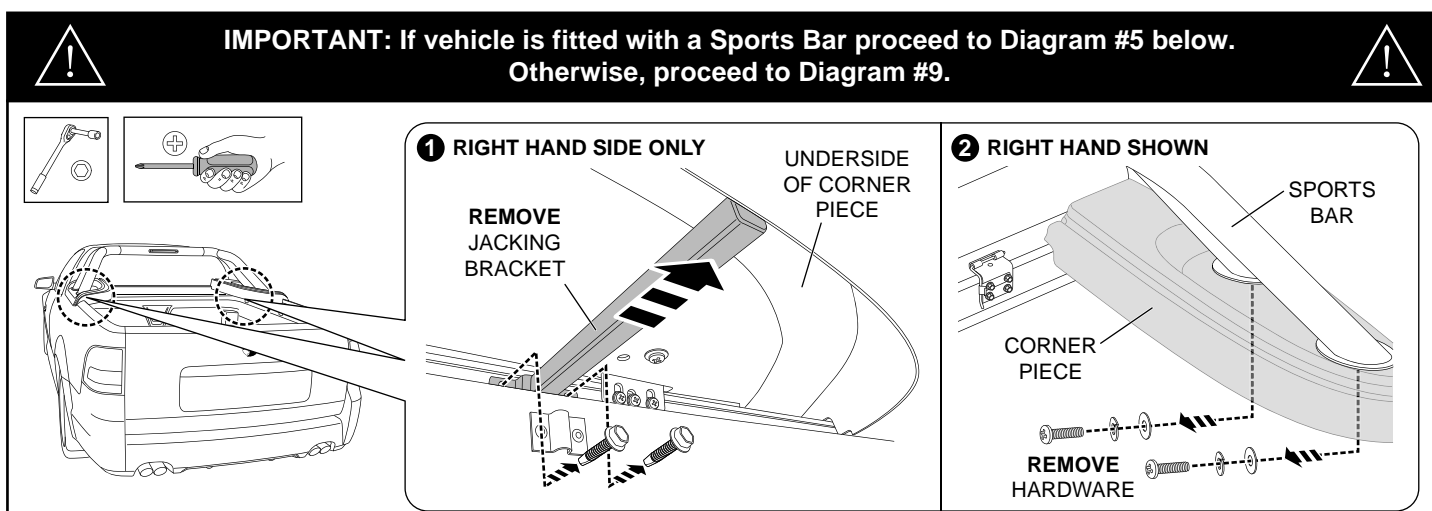


Diagram #5

5. Remove and retain the jacking brackets from the right hand side rail as shown. Remove and retain the hardware that attaches the Sports Bar to the corner pieces as shown. **See Dia #5.**

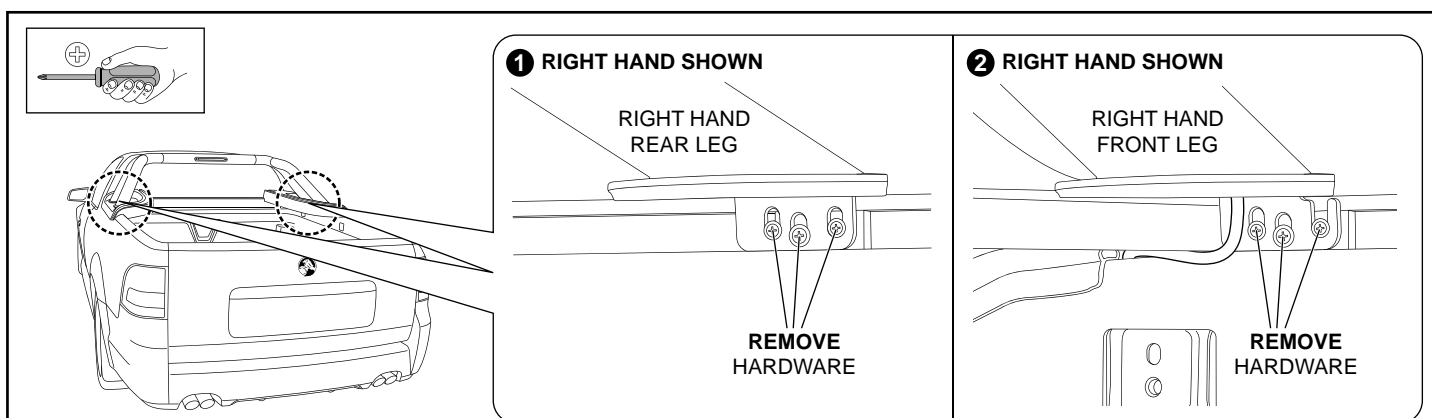


Diagram #6

6. Remove and retain all Sports Bar hardware. **See Dia #6.**

RETRO FIT REMOTE LOCKING 1PC/3PC TONNEAU COVER

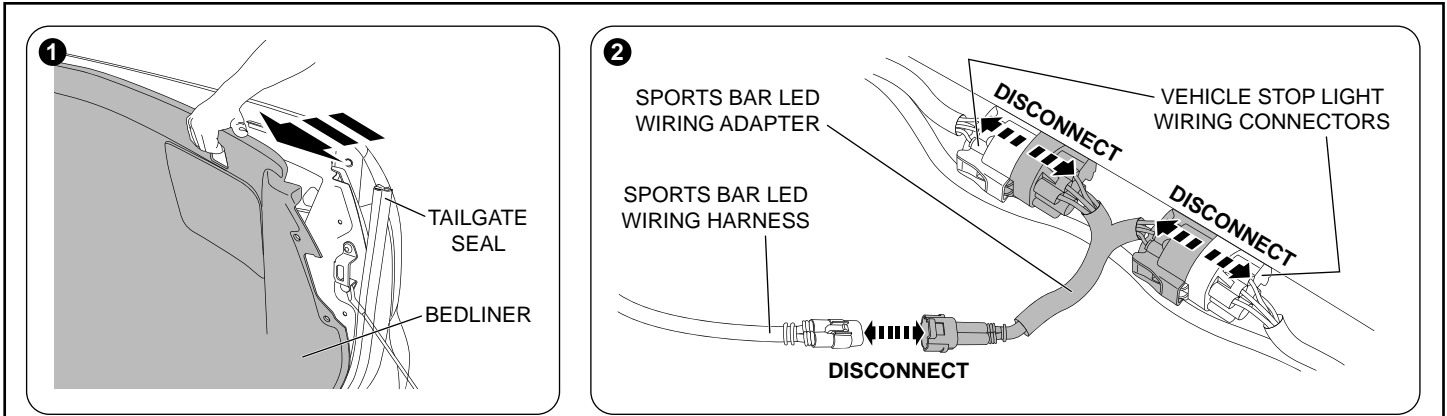


Diagram #7

7. Lift and pull the right hand side of the bedliner as shown to gain access to the wiring located in the side panel of the vehicle. Disconnect the Sports Bar LED wiring adapter from the vehicle stop light wiring connectors located behind the bedliner. The Sports Bar LED wiring adapter is no longer needed and can be discarded. Also disconnect the Sports Bar LED wiring harness from the Sports Bar LED wiring adapter as shown. **See Dia #7.**

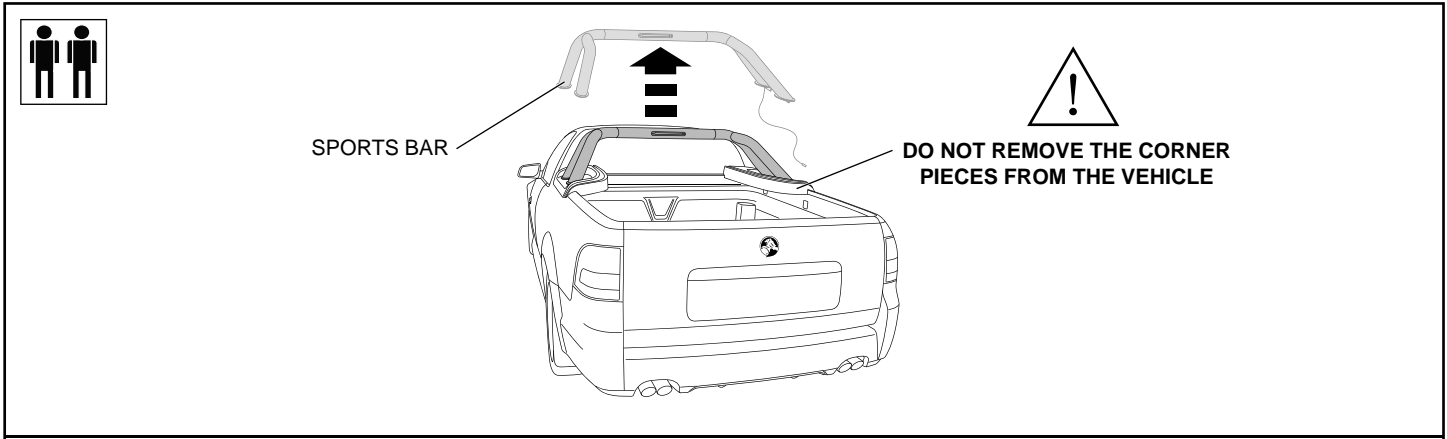


Diagram #8

8. Remove the Sports Bar from the vehicle, ensuring the Sports Bar LED wiring harness is carefully guided out from behind the bedliner and is not damaged. Do not remove the corner pieces. **See Dia #8. IMPORTANT: Now proceed to Diagram #10 (Skip Diagram #9).**

IMPORTANT: If your vehicle was fitted with a Sports Bar, skip Diagram #9 and proceed to Diagram #10.

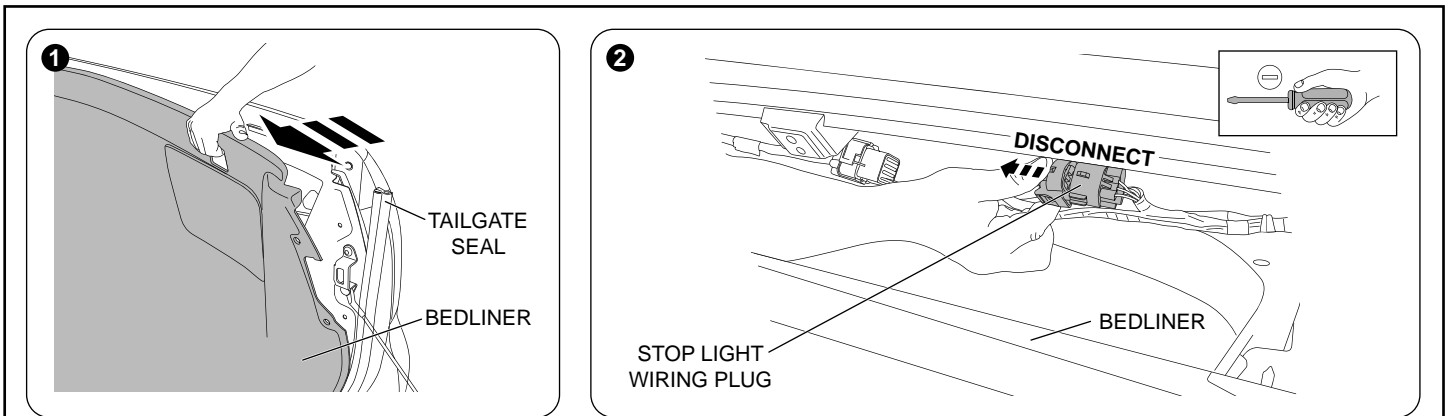


Diagram #9

9. Lift and pull the right hand side of the bedliner as shown to gain access to the wiring located in the side panel of the vehicle. Disconnect the vehicle's stop light wiring connectors located behind the bedliner. **See Dia #9.**
NOTE: This connector is located above the wheel arch towards the rear of the vehicle.

RETRO FIT REMOTE LOCKING 1PC/3PC TONNEAU COVER

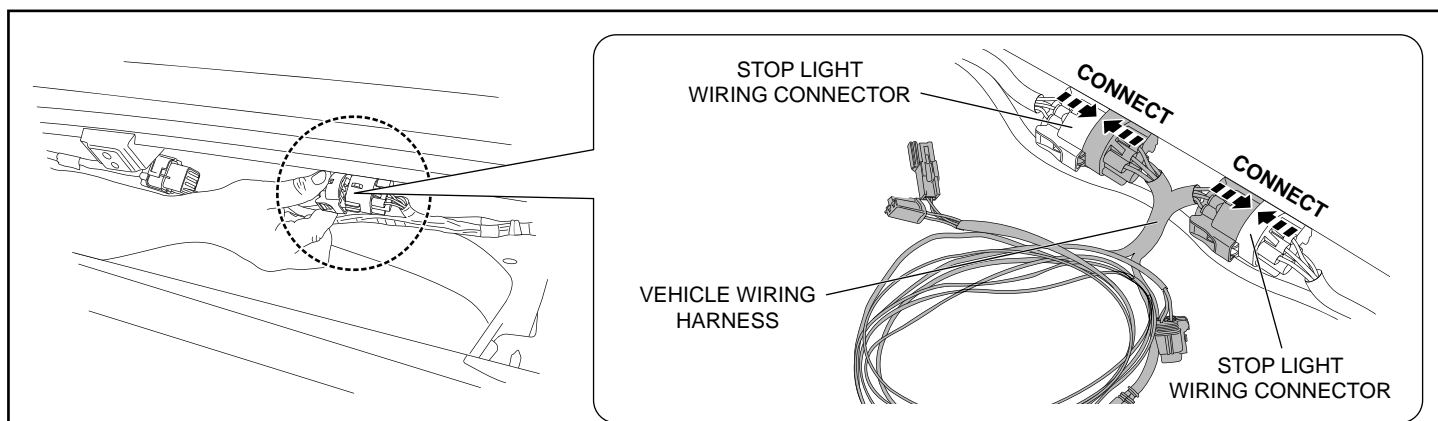


Diagram #10

10. Insert the vehicle wiring harness between the two stop light wiring plugs as shown. **See Dia #10.**

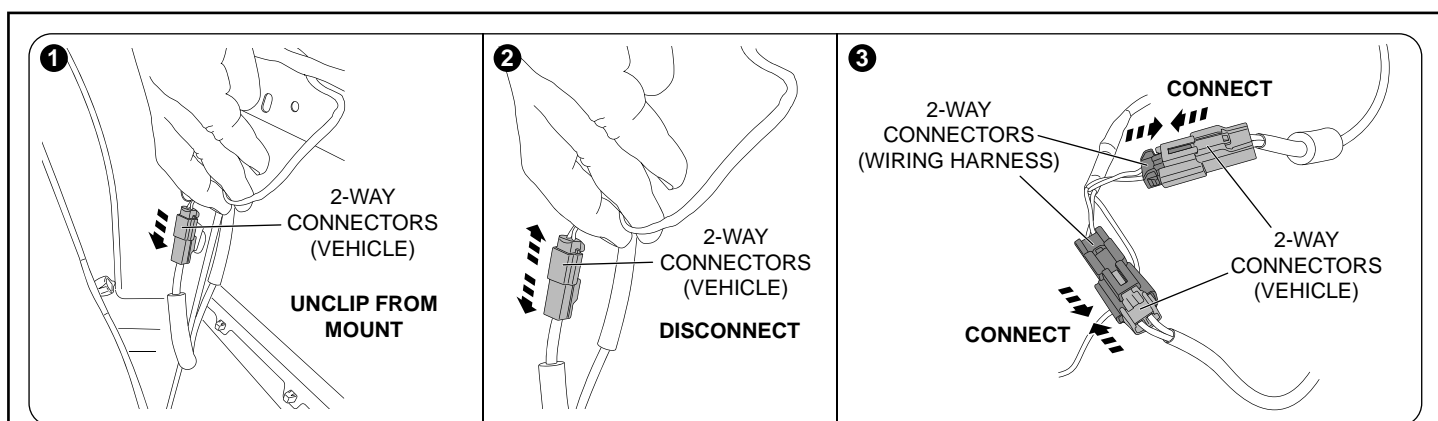


Diagram #11

11. Find the white 2-way connectors on the vehicle (directly behind the wheel arch) and unclip them from the vehicle as shown. Disconnect the white 2-way connectors. Connect the white 2-way connectors on the wiring harness to the white 2-way connectors from the vehicle as shown. Finally clip the white 2-way connector back onto the vehicle. **See Dia #11.**

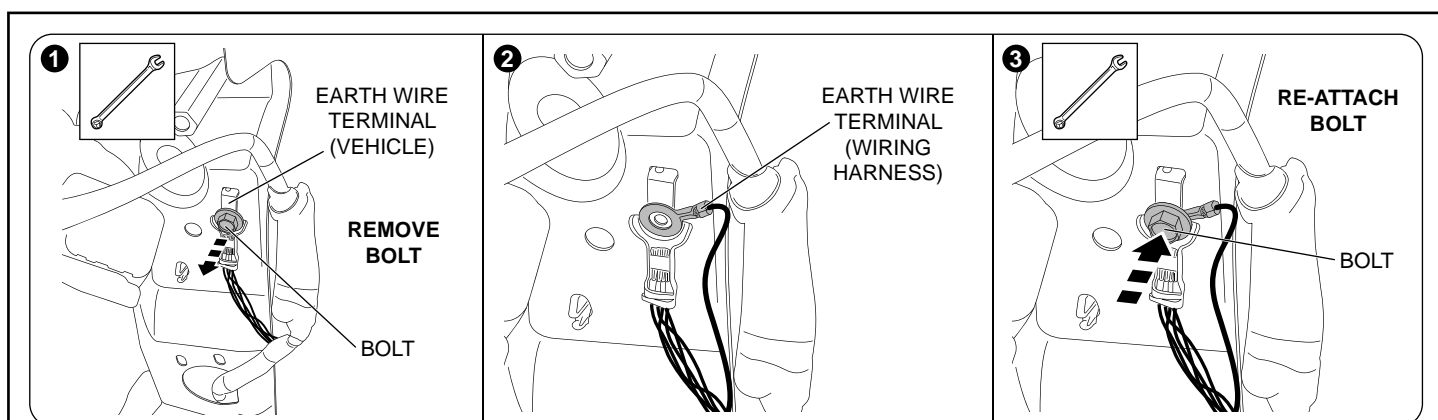


Diagram #12

12. Find the earth wire terminal behind the bedliner near the vehicle's tailgate and remove the bolt holding the terminal together as shown. Locate the earth wire from the wiring harness and locate it over the hole that the bolt was just removed from. While holding everything in place, re-attach the bolt to the earth wire terminal on the vehicle as shown. **See Dia #12.**

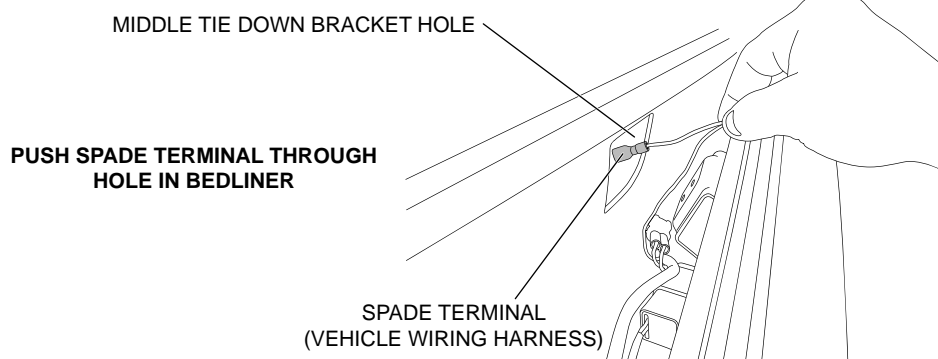


Diagram #13

13. Find the middle tie down bracket hole and push the spade terminal from the vehicle wiring harness through it as shown. **See Dia #13.**

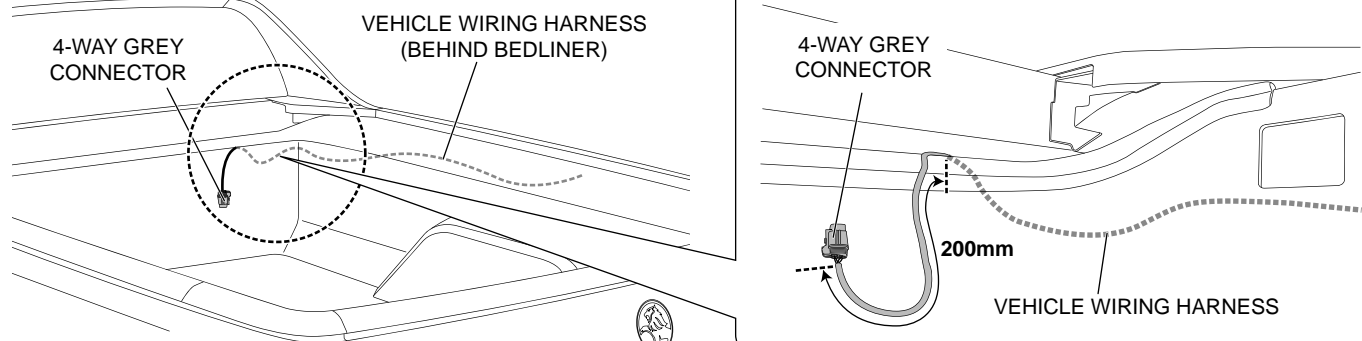
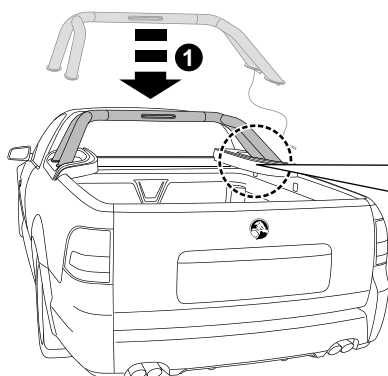


Diagram #14

14. Run the grey 4-way connector from the vehicle wiring harness all the way to the front of the tub behind the bedliner as shown. At the front of the tub, pull the grey 4-way connector **200mm** out from behind the bedliner as shown. **See Dia #14.**



IMPORTANT: If vehicle has a Sports Bar proceed to Diagram #15 below.
Otherwise, proceed to Diagram #20.



2 RIGHT HAND ONLY

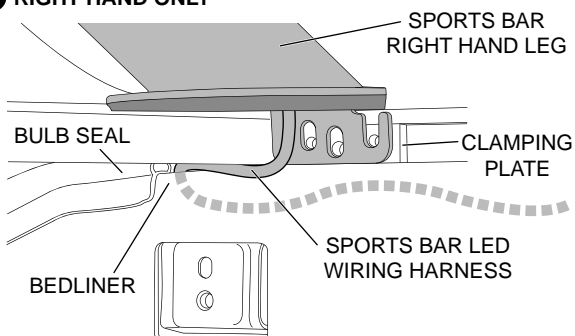


Diagram #15

15. Fit the Sports Bar to the vehicle as shown. Tuck the Sports Bar LED wiring harness up under the side rail and behind the bedliner as shown. **See Dia #15.**

RETRO FIT REMOTE LOCKING 1PC/3PC TONNEAU COVER

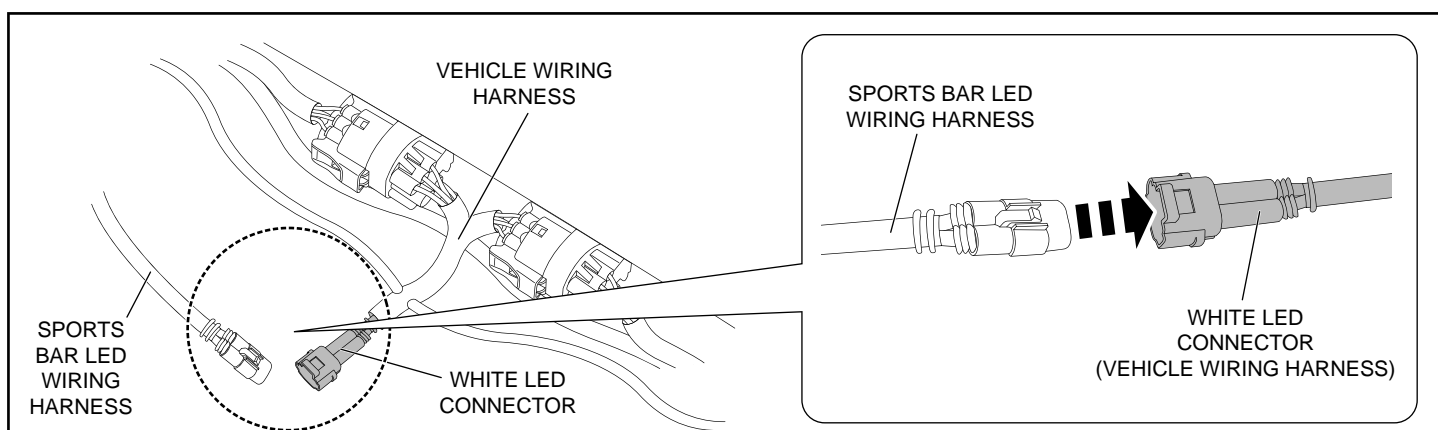


Diagram #16

16. Feed the LED wiring loom along the inside of the side panel and attach the Sports Bar LED wiring harness to the vehicle wiring harness as shown. Ensure the male wiring connector is orientated correctly when attaching. **See Dia #16.**

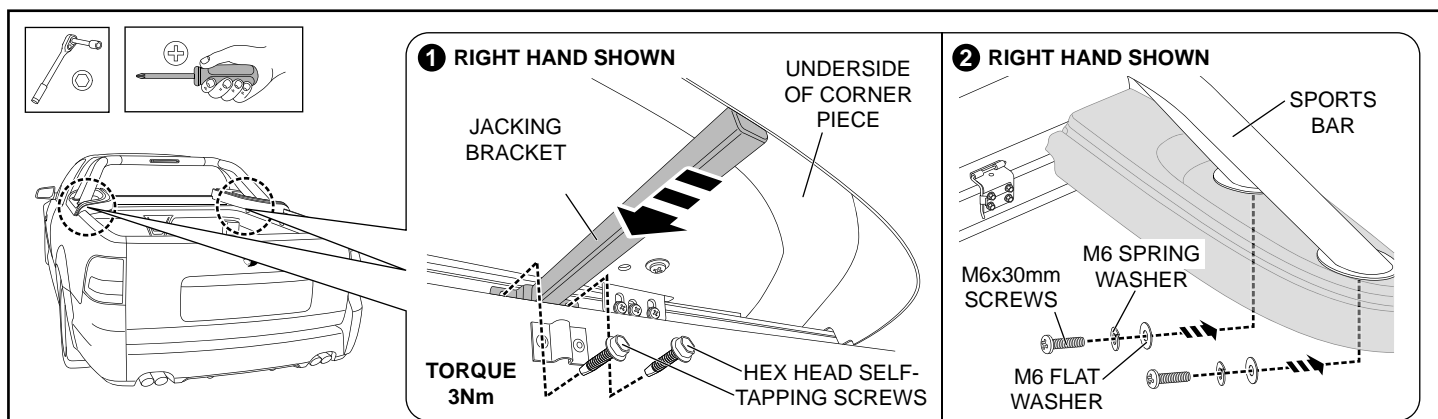


Diagram #17

17. Attach the jacking brackets to the side rail using the retained hex head self-tapping screws as shown. Tighten to torque 3Nm. Fasten the corner pieces to the Sports Bar using the retained M6x30mm screws, M6 spring washers, and M6 flat washers as shown. **See Dia #17.**

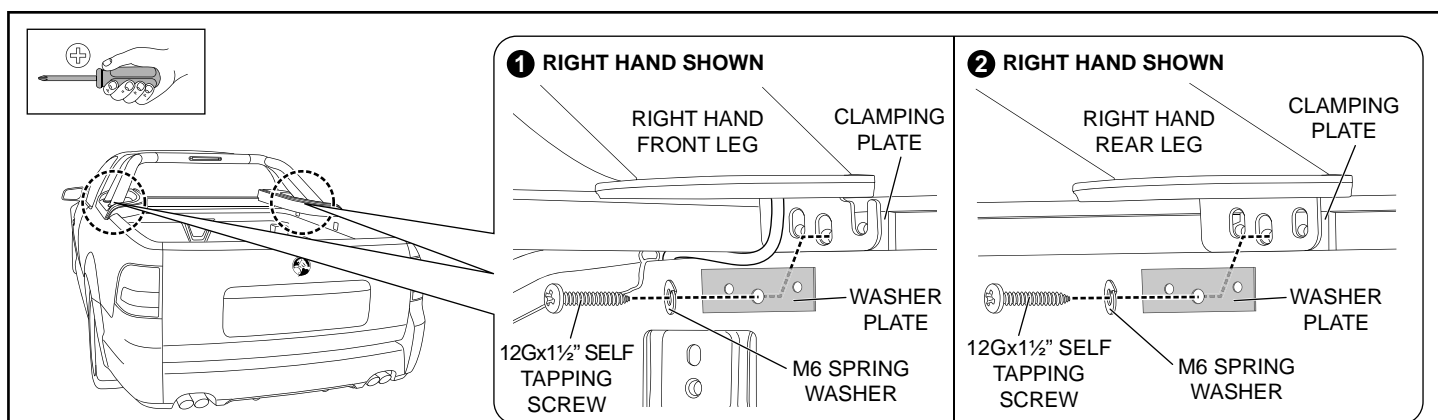


Diagram #18

18. Attach the Sports Bar front legs to the clamping plates and side rails using the retained 12Gx1 1/2" self tapping screws, M6 spring washers and washer plates as shown. Do not tighten yet. Repeat process for the Sports Bar rear legs. **See Dia #18.**

RETRO FIT REMOTE LOCKING 1PC/3PC TONNEAU COVER

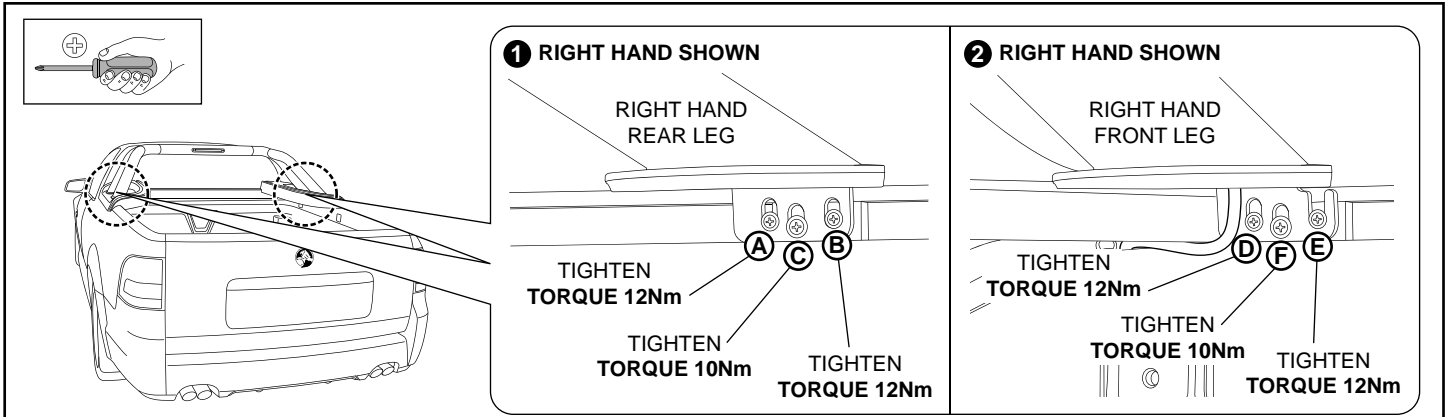


Diagram #19

19. Tighten all the screws on the Sports Bar right hand leg in the order A - B - C - D - E - F. Tighten A, B, D & E to torque 12Nm. Tighten C & F to torque 10Nm. Repeat process for the Sports Bar left hand leg. Visually check that all screws are home and all spring washers are compressed. **See Dia #19.**

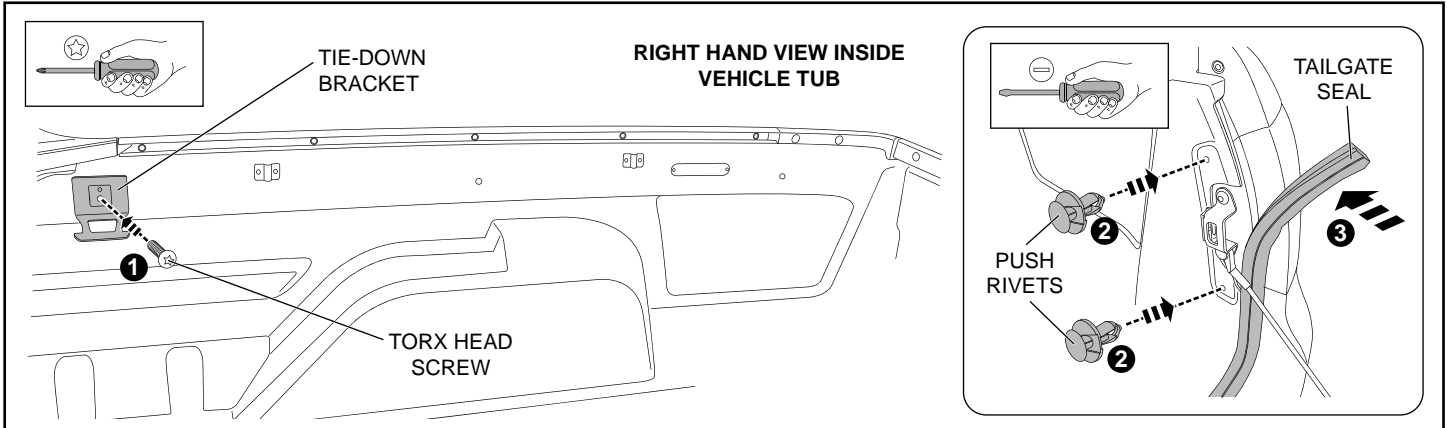


Diagram #20

20. Re-attach the bedliner by lifting it back into position, re-install the front tie-down bracket, the push rivets and the tailgate seal as shown. **See Dia #20.**

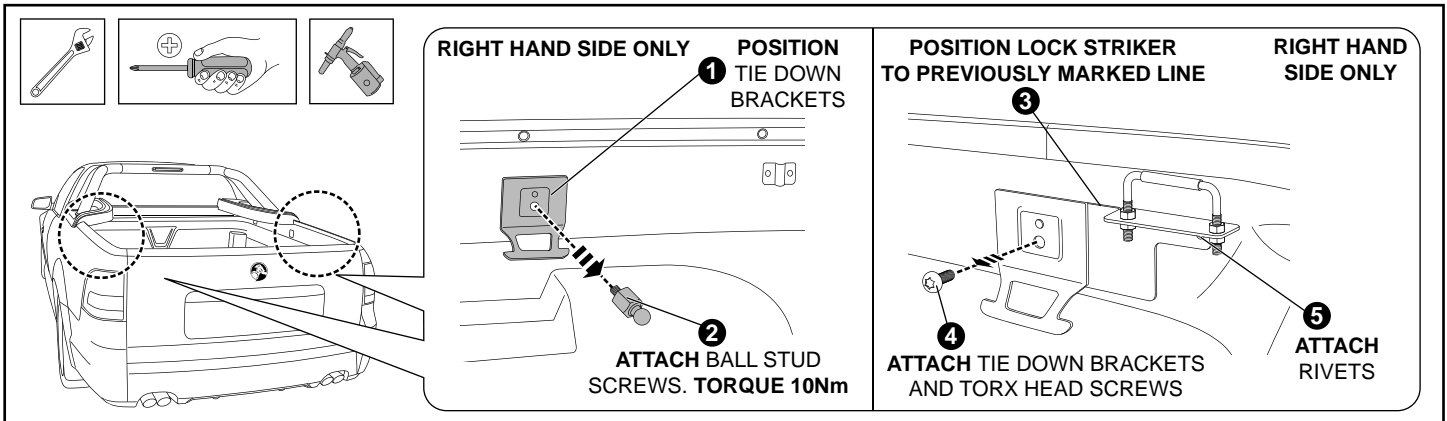
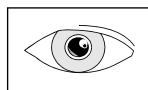


Diagram #21

21. Position the right hand side tie down bracket and attach the ball stud screw as shown. Tighten to torque 10Nm. Align the right hand side lock striker bracket with the previously drawn outline and attach it to the side rail panel with the tie down bracket and torx head screw as shown. Attach a rivet to the lock striker bracket as shown. **See Dia #21.**

RETRO FIT REMOTE LOCKING 1PC/3PC TONNEAU COVER



6-WAY MALE CONNECTOR
CONNECTS TO MODULE

SPADE TERMINAL
CONNECTS TO GAS STRUT

2-WAY MALE CONNECTOR
CONNECTS TO ACTUATOR

4-WAY MALE CONNECTOR
CONNECTS TO VEHICLE
WIRING HARNESS

2-WAY MALE CONNECTOR
CONNECTS TO LED

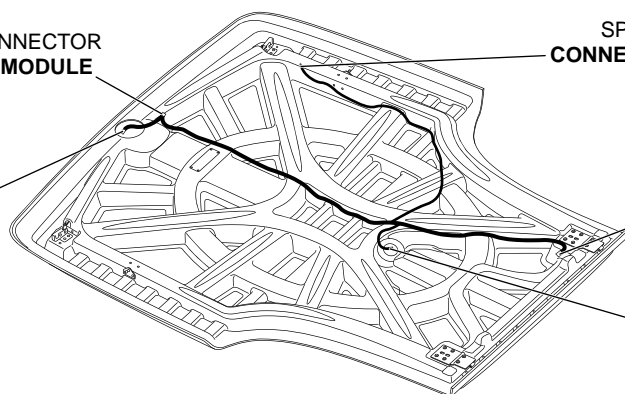
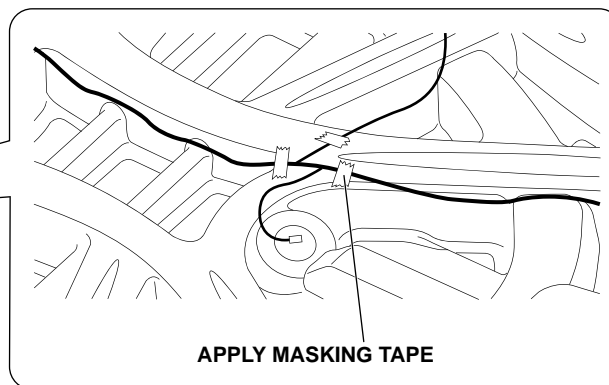
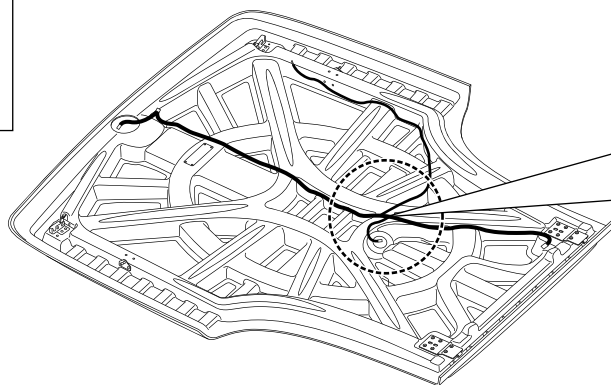
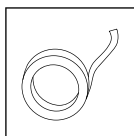


Diagram #22

22. Lay the Tonneau Cover upside down on a sheet or mat to prevent scratching. Spread the Tonneau wiring harness out on the Tonneau Cover as shown, taking note of the different connectors and their correct positions. **See Dia #22.**

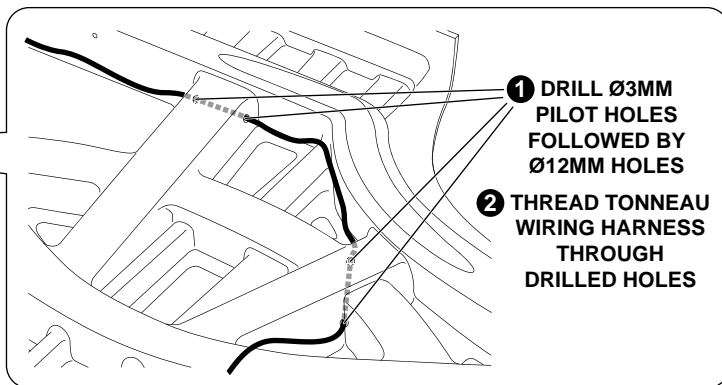
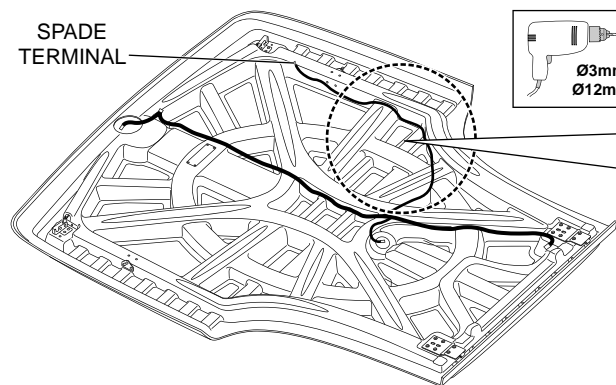
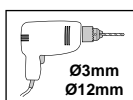


APPLY MASKING TAPE

Diagram #23

23. Once the Tonneau wiring harness is in position, apply masking tape to the area where the wiring intersects to hold the harness in place. **See Dia #23.**

SPADE
TERMINAL



1 DRILL Ø3MM
PILOT HOLES
FOLLOWED BY
Ø12MM HOLES

2 THREAD TONNEAU
WIRING HARNESS
THROUGH
DRILLED HOLES

Diagram #24

24. Drill Ø3mm pilot holes followed by Ø12mm holes in the Tonneau Cover at the correct locations as shown. Thread the Tonneau wiring harness (spade terminal end) through the holes as shown. **See Dia #24.**

RETRO FIT REMOTE LOCKING 1PC/3PC TONNEAU COVER

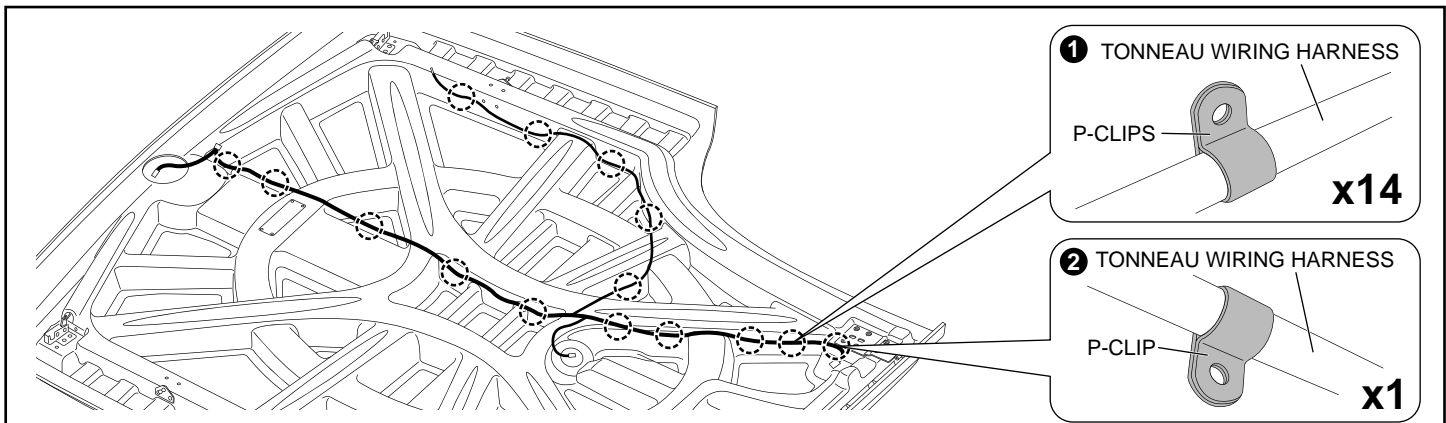


Diagram #25

25. Attach fourteen (14) p-clips to the Tonneau wiring harness at the correct locations as shown, with the hole located at the top. Attach one (1) p-clips to the Tonneau wiring harness at the correct location as shown, with the hole located underneath. **See Dia #25.**

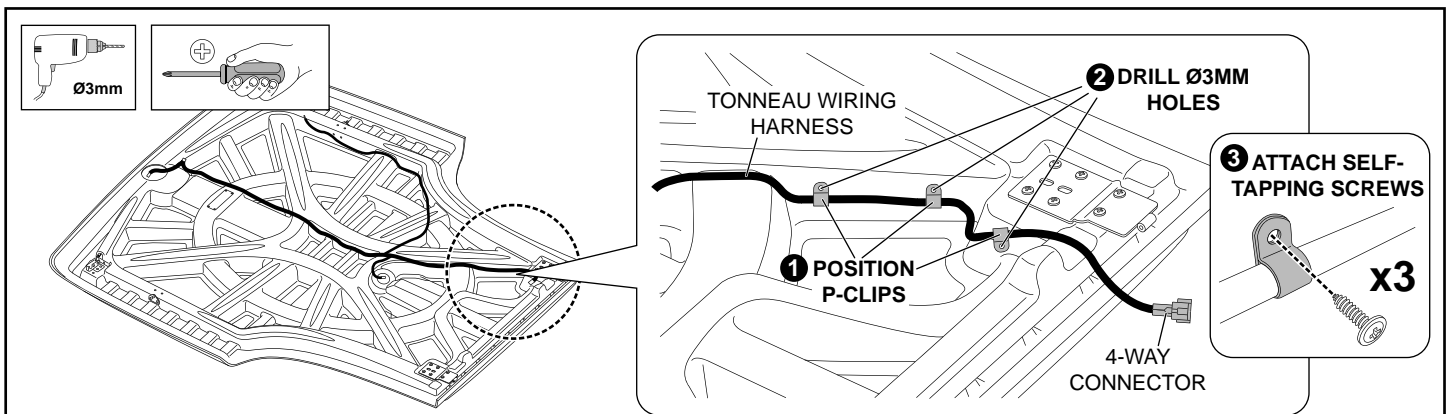


Diagram #26

26. While holding the p-clips in position, drill Ø3mm holes in the Tonneau Cover through the hole in each p-clip as shown. Fasten the p-clips to the Tonneau Cover using the self-tapping screws provided. **See Dia #26. IMPORTANT: Before drilling the holes, ensure p-clips are positioned in such a way that the Tonneau wiring harness will remain firmly attached to Tonneau Cover. Also ensure the p-clip closest to the front of the Tonneau Cover is upside down and positioned at an angle as shown.**

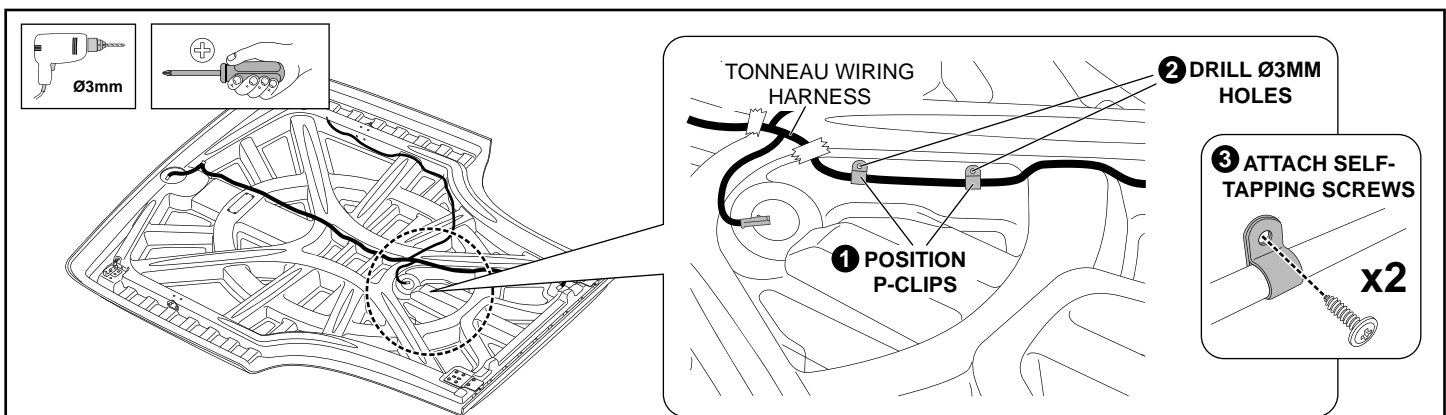


Diagram #27

27. While holding the p-clips in position, drill Ø3mm holes in the Tonneau Cover through the hole in each p-clip as shown. Fasten the p-clips to the Tonneau Cover using the self-tapping screws provided. **See Dia #27. IMPORTANT: Before drilling the holes, ensure p-clips are positioned in such a way that the Tonneau wiring harness will remain firmly attached to Tonneau Cover.**

RETRO FIT REMOTE LOCKING 1PC/3PC TONNEAU COVER

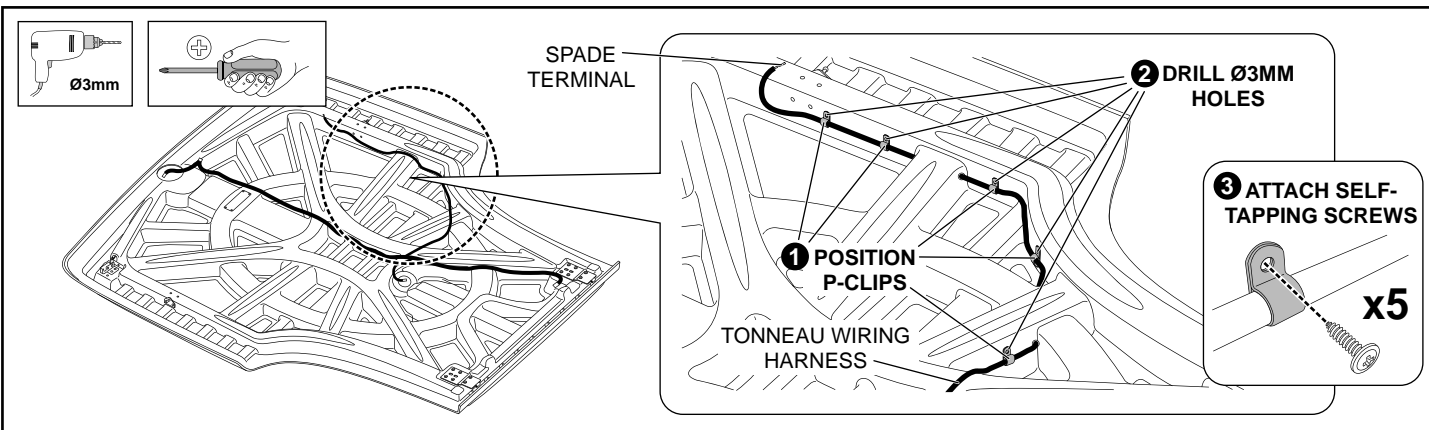


Diagram #28

28. While holding the p-clips in position, drill Ø3mm holes in the Tonneau Cover through the hole in each p-clip as shown. Fasten the p-clips to the Tonneau Cover using the self-tapping screws provided. **See Dia #28. IMPORTANT: Before drilling the holes, ensure p-clips are positioned in such a way that the Tonneau wiring harness will remain firmly attached to Tonneau Cover.**

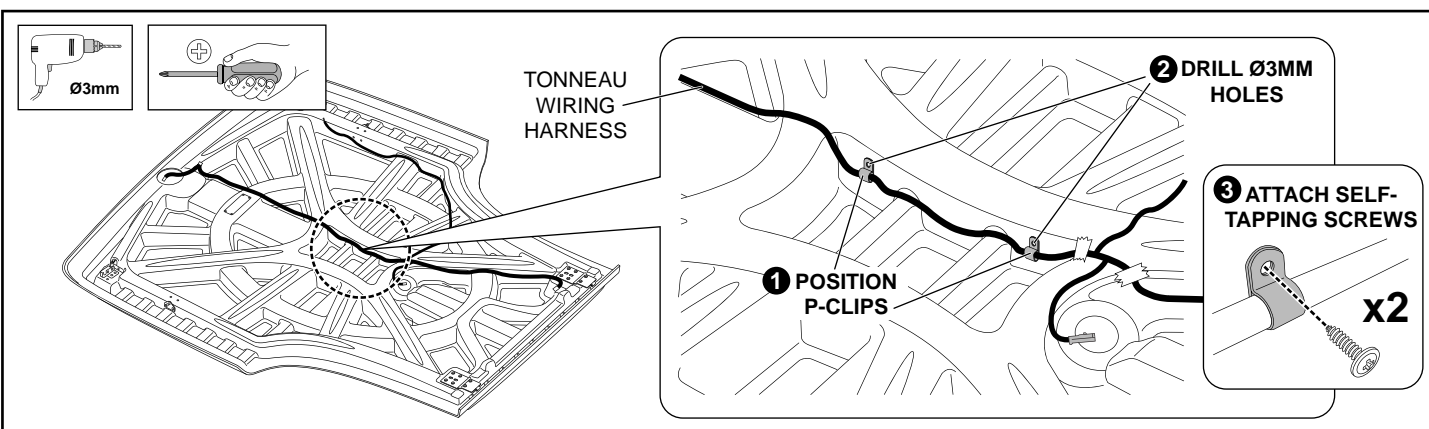


Diagram #29

29. While holding the p-clips in position, drill Ø3mm holes in the Tonneau Cover through the hole in each p-clip as shown. Fasten the p-clips to the Tonneau Cover using the self-tapping screws provided. **See Dia #29. IMPORTANT: Before drilling the holes, ensure p-clips are positioned in such a way that the Tonneau wiring harness will remain firmly attached to Tonneau Cover.**

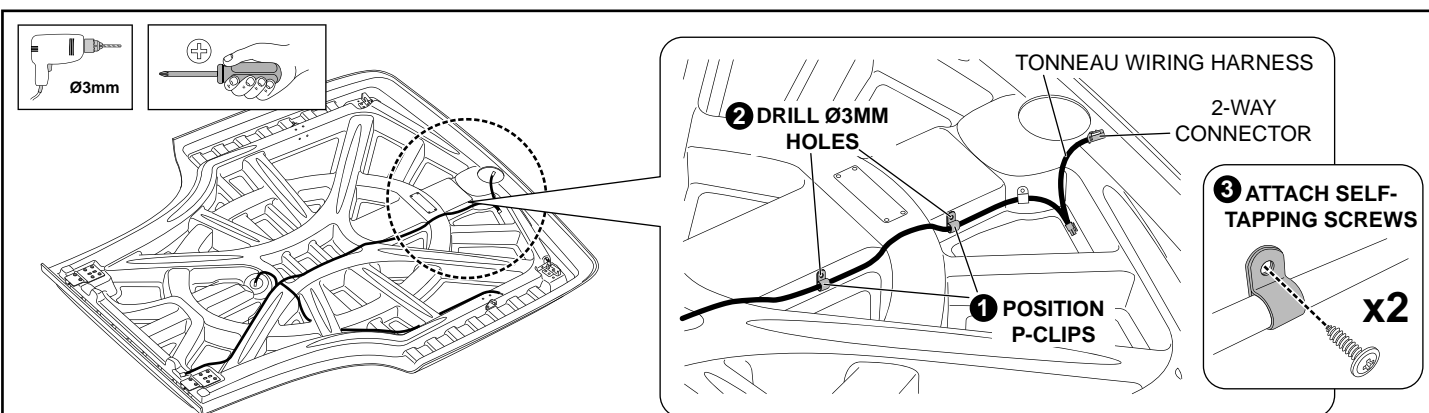


Diagram #30

30. While holding the p-clips in position, drill Ø3mm holes in the Tonneau Cover through the hole in each p-clip as shown. Fasten the p-clips to the Tonneau Cover using the self-tapping screws provided. **See Dia #30. IMPORTANT: Before drilling the holes, ensure p-clips are positioned in such a way that the Tonneau wiring harness will remain firmly attached to Tonneau Cover.**

RETRO FIT REMOTE LOCKING 1PC/3PC TONNEAU COVER

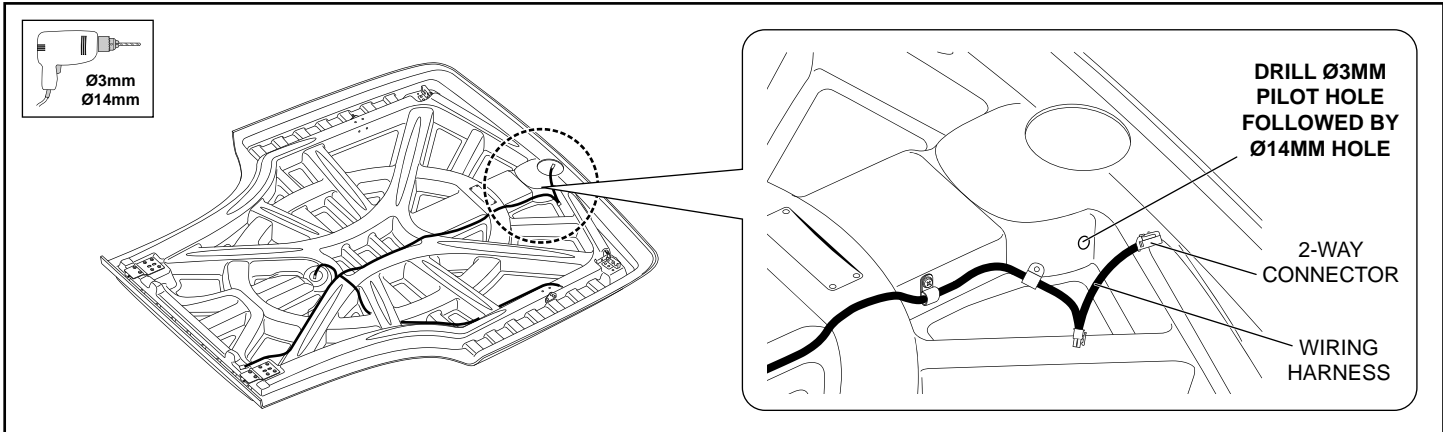


Diagram #31

31. Drill a Ø3mm followed by a Ø14mm hole in the Tonneau Cover at the correct location as shown. See Dia #31.

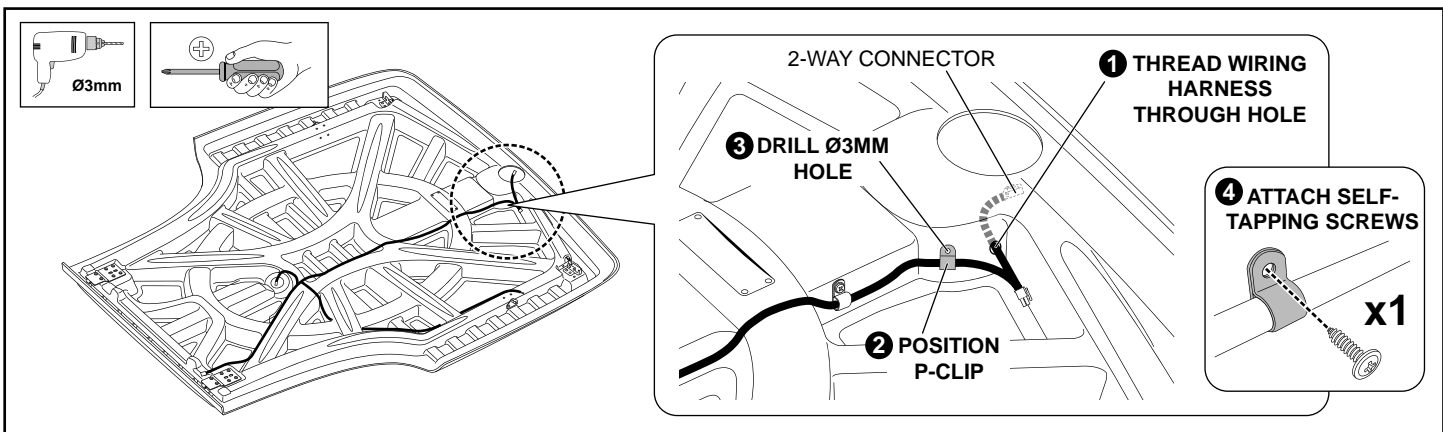


Diagram #32

32. Thread the Tonneau wiring harness through the previously drilled hole as shown. While holding the final p-clip in position, drill Ø3mm hole in the Tonneau Cover through the hole in the p-clip as shown. Fasten the p-clip to the Tonneau Cover using the self-tapping screw provided. See Dia #32.

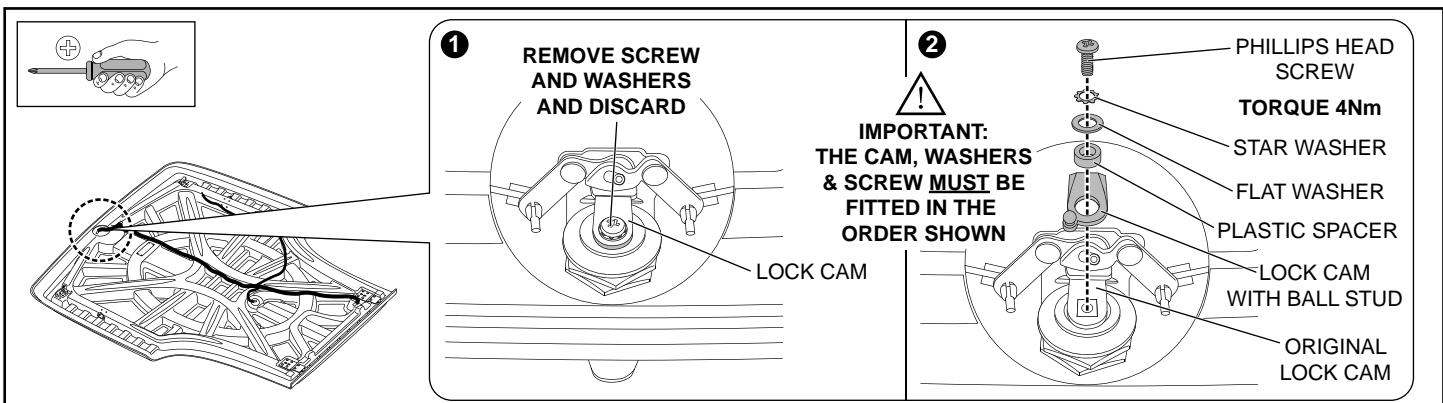


Diagram #33

33. Remove the inspection cover to gain access to the Tonneau's locking mechanism. Remove and discard the screw and washers holding the lock cam in place as shown. Do not remove the lock cam. Fit the ball stud lock cam, plastic spacer, flat washer and star washer to the locking mechanism using the phillips head screw provided. TIGHTEN TO TORQUE 4Nm. See Dia #33. IMPORTANT: Ensure both lock cams are aligned with each other and with the locking mechanism as shown.

RETRO FIT REMOTE LOCKING 1PC/3PC TONNEAU COVER

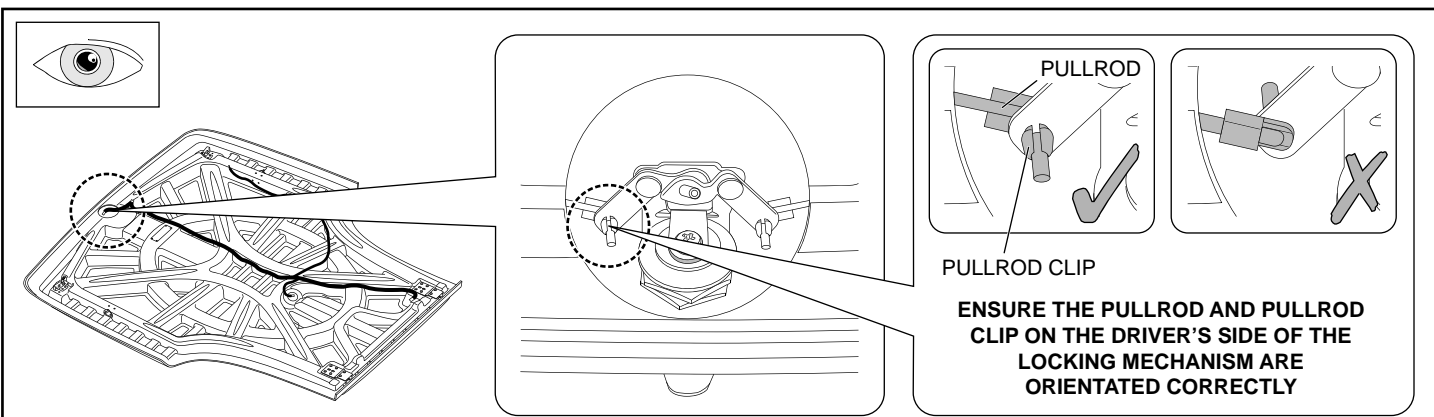


Diagram #34

34. Ensure the pullrod and pullrod clip on the **DRIVER'S SIDE** of the locking mechanism are orientated correctly as shown. If they are not orientated correctly, remove the pullrod and pullrod clip and re-attach them correctly. You may need to replace the pullrod clip with a new one provided with the hardware kit. **See Dia #34.**

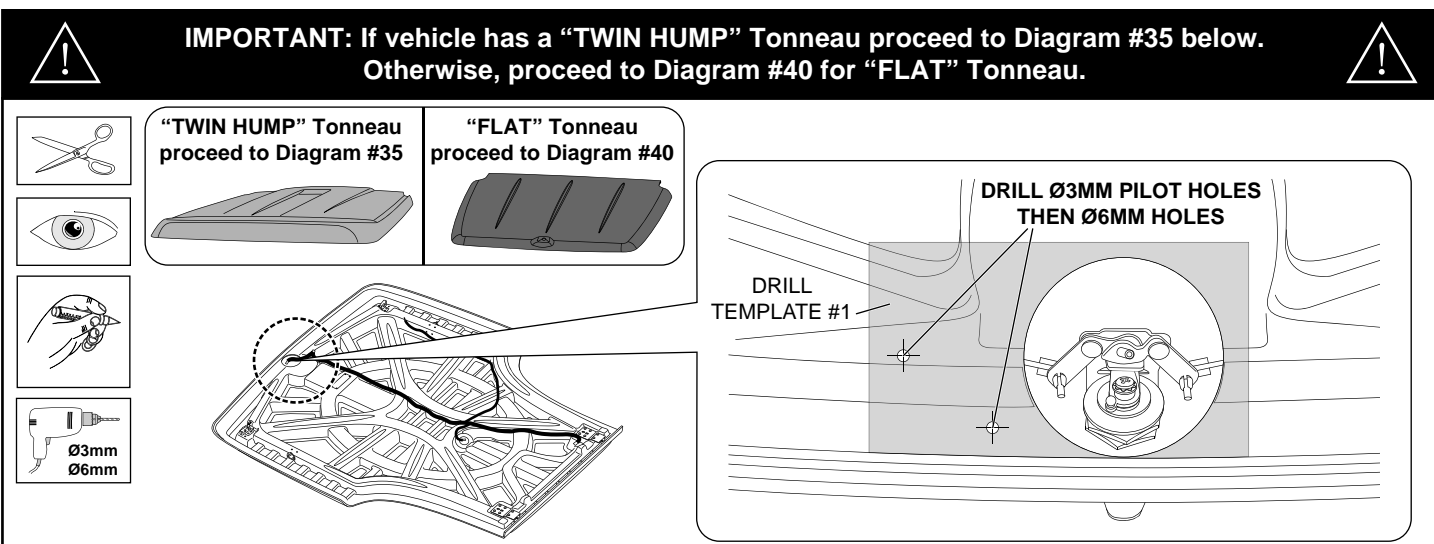


Diagram #35

35. Cut out drill template #1 and position it on the Tonneau Cover over the inspection hole. Once in position, use a centre punch to lightly mark the hole locations onto the Tonneau Cover. Remove the template and drill Ø3mm pilot holes followed by Ø6mm holes at the locations marked. **See Dia #35.**

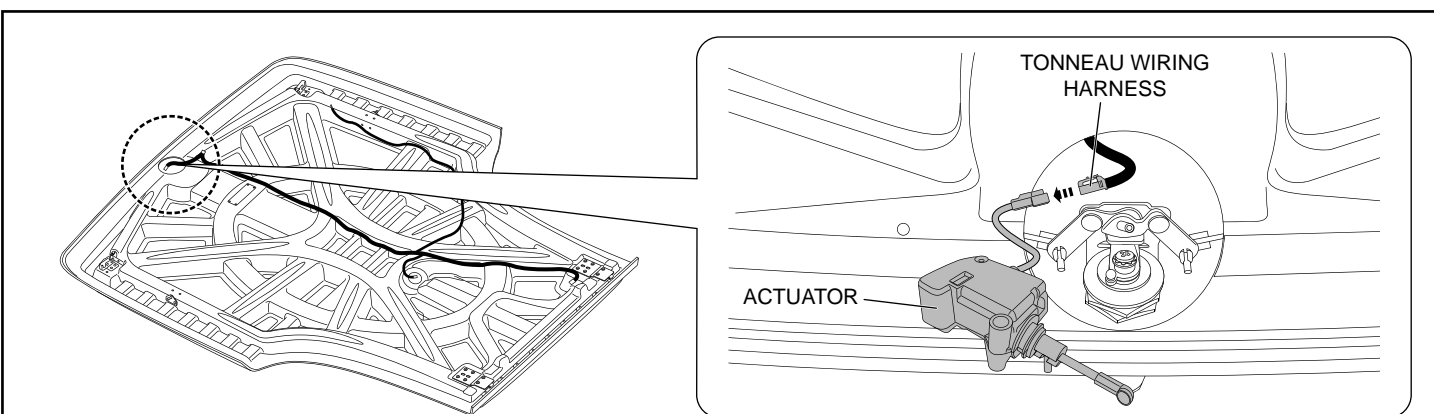


Diagram #36

36. Connect the 2-way connector from the Tonneau wiring harness with the actuator as shown. **See Dia #36.**

RETRO FIT REMOTE LOCKING 1PC/3PC TONNEAU COVER

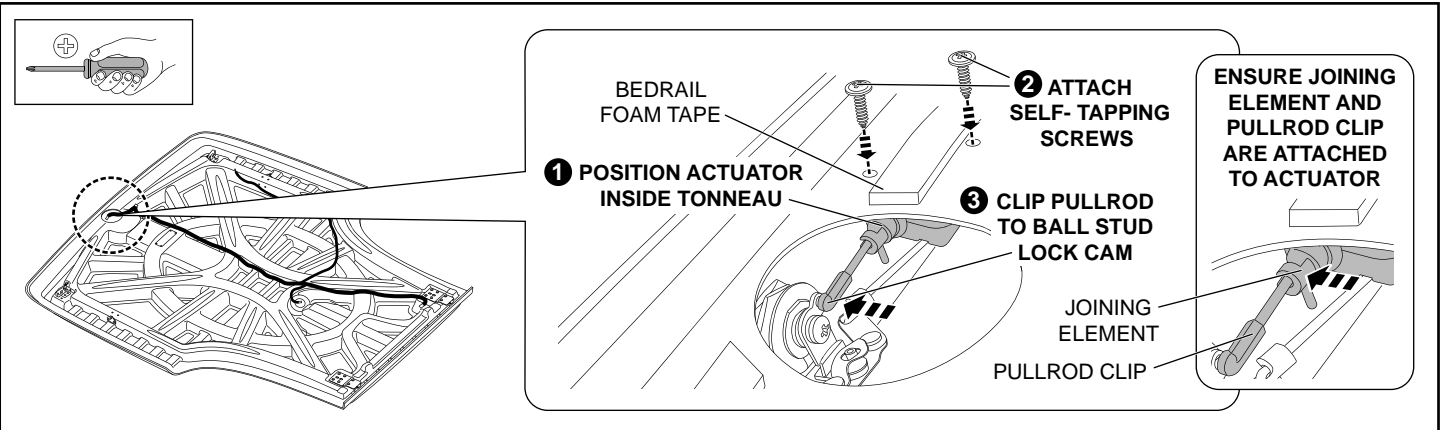


Diagram #37

37. Position the actuator inside the Tonneau Cover and attach the long self-tapping screws as shown. Finally, clip the pullrod from the actuator onto the lock cam with ball stud as shown. **See Dia #37. NOTE: Ensure the joining element and pull rod clip are attached to the actuator. If they aren't, clip them into place as shown. Also ensure that all the wiring is moved out of the way and cannot interfere with the locking mechanism. Replace any bedrail foam tape that was damaged with the foam tape provided in the hardware kit.**

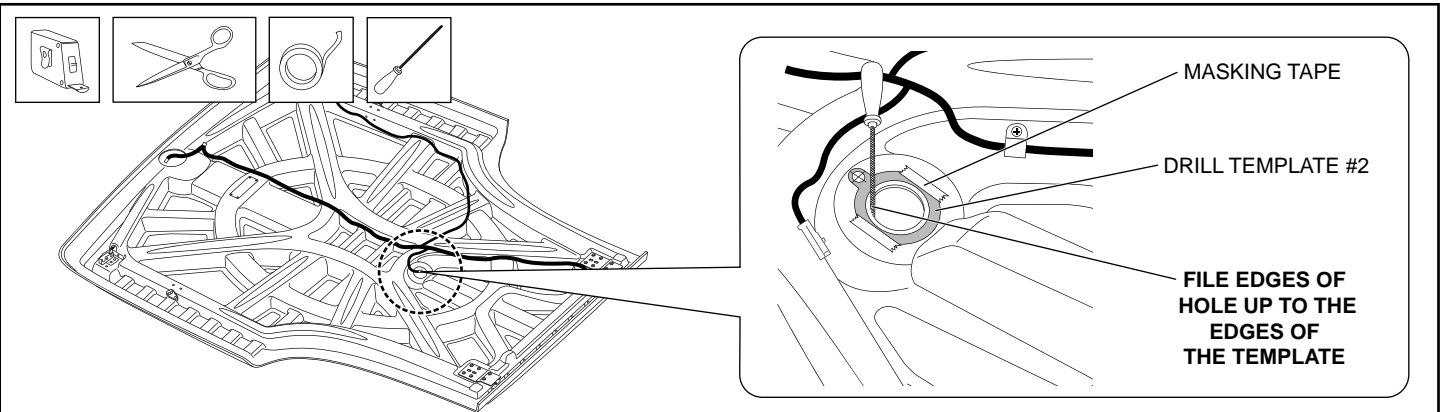


Diagram #38

38. Cut out drill template #2 and position it on the Tonneau Cover as shown. Once the template is taped in place, use a file to widen the edges of the hole in the Tonneau Cover to meet the edges of the hole in the template as shown. If the holes are already the same size, proceed to the next Diagram. **See Dia #38.**

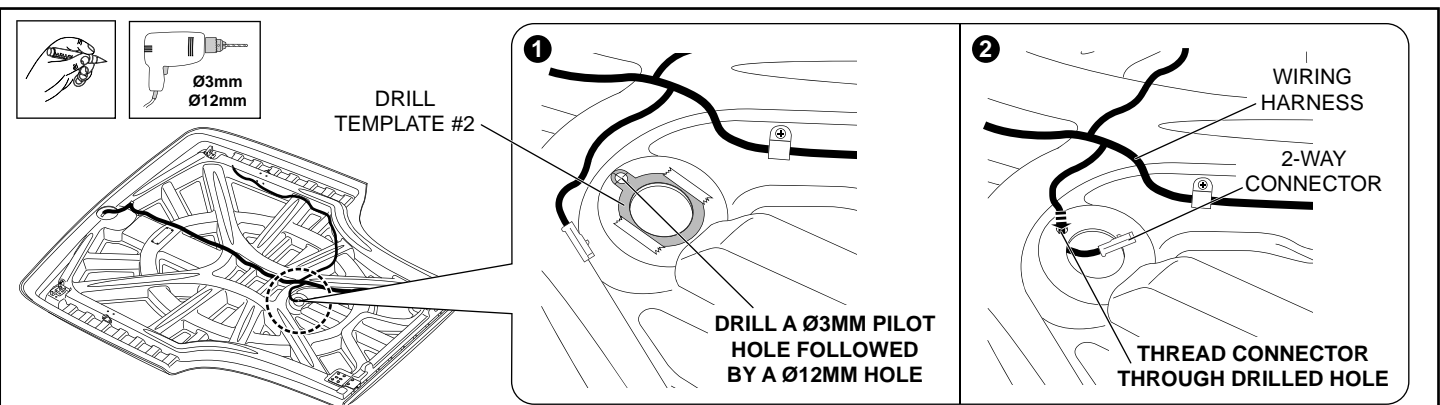


Diagram #39

39. Use a centre punch to lightly mark the hole location in the Tonneau Cover as indicated by the drill template. Remove the template and drill a Ø3mm pilot hole followed by a Ø12mm hole at the marked location. Thread the 2-way connector from the Tonneau wiring harness through the drilled hole. **See Dia #39.**

RETRO FIT REMOTE LOCKING 1PC/3PC TONNEAU COVER



IMPORTANT: If vehicle has a "FLAT" Tonneau proceed to Diagram #40 below. Otherwise, proceed to Diagram #42 for "TWIN HUMP" Tonneau.

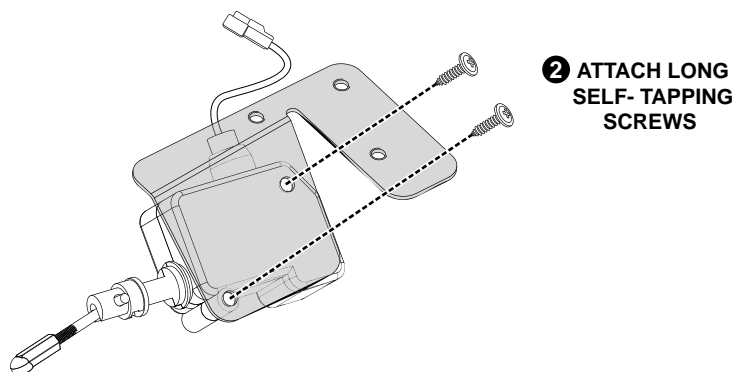
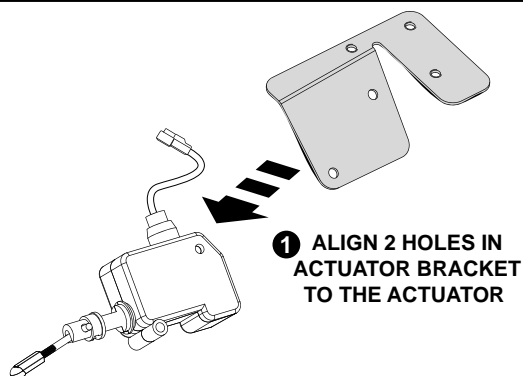
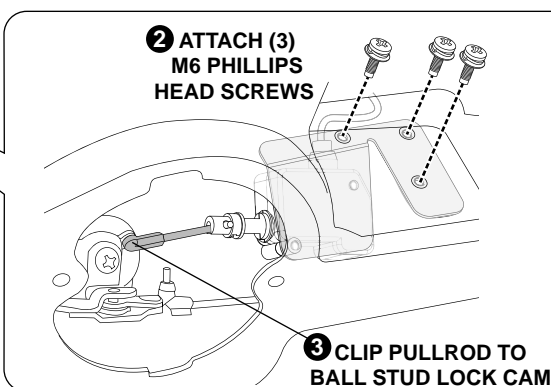
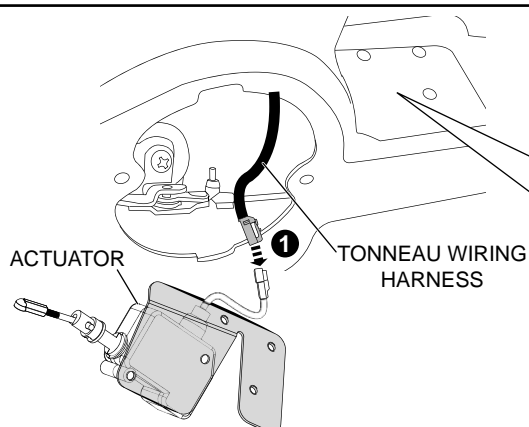


Diagram #40

40. Align the two (2) holes in the actuator bracket to the holes in the actuator as shown, ensure correct orientation. Secure the actuator to the actuator bracket with two (2) long self-tapping screws as shown. **See Dia #40.**



ENSURE JOINING ELEMENT AND PULLROD CLIP ARE ATTACHED TO ACTUATOR

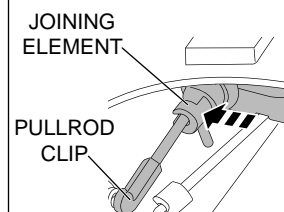


Diagram #41

41. Connect the 2-way connector from the Tonneau wiring harness with the actuator as shown. Position the actuator inside the Tonneau Cover and attach with three (3) M6 phillips head screws as shown. Clip the pullrod from the actuator onto the lock cam with ball stud as shown. **See Dia #41.**

NOTE: Ensure the joining element and pull rod clip are attached to the actuator. If they aren't, clip them into place as shown. Also ensure that all the wiring is moved out of the way and cannot interfere with the locking mechanism. Replace any bedrail foam tape that was damaged with the foam tape provided in the hardware kit.

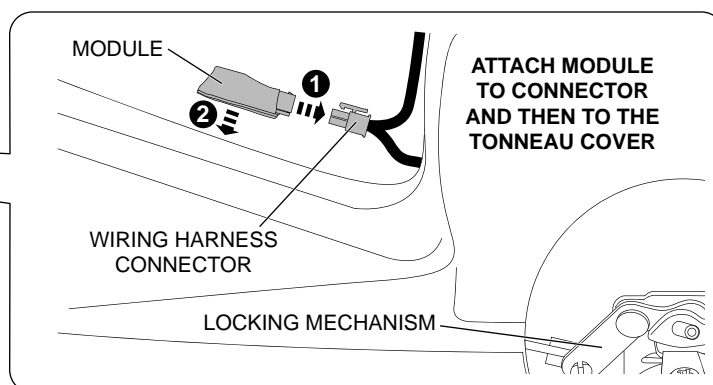
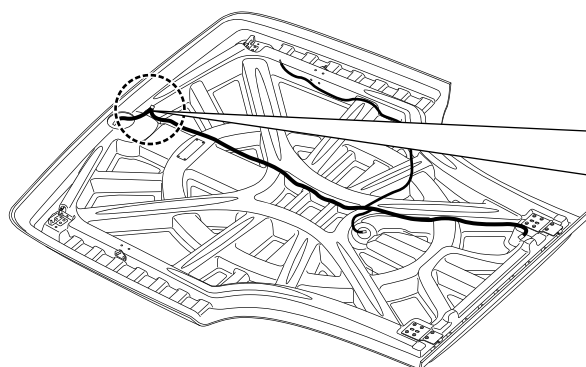


Diagram #42

42. Attach the module to the 6-way male connector on the Tonneau wiring harness. Remove the protective backing from the module and adhere it the Tonneau Cover as shown. **See Dia #42.**

RETRO FIT REMOTE LOCKING 1PC/3PC TONNEAU COVER

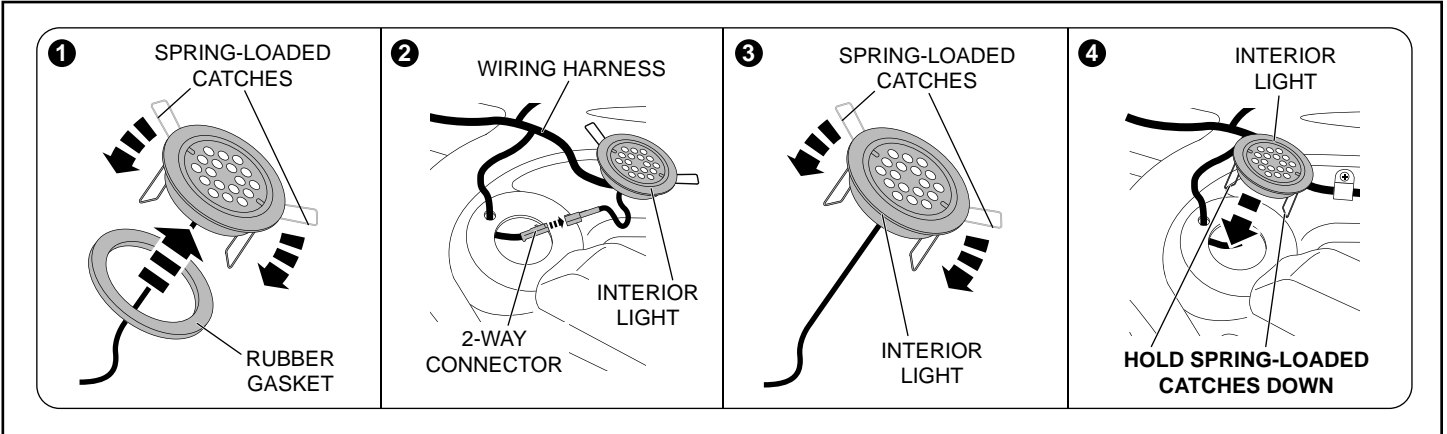


Diagram #43

43. While holding the spring-loaded catches down, fit the rubber gasket to the interior light as shown. Connect the 2-way male connector from the Tonneau wiring harness to the female connector from the interior light as shown. While holding the spring-loaded catches down, insert the interior light into the Tonneau Cover. The spring-loaded catches will spring back once the light is installed and will hold it in place. **See Dia #43. IMPORTANT: Ensure that all the wiring for the interior light is contained inside the Tonneau Cover before installing the interior light.**

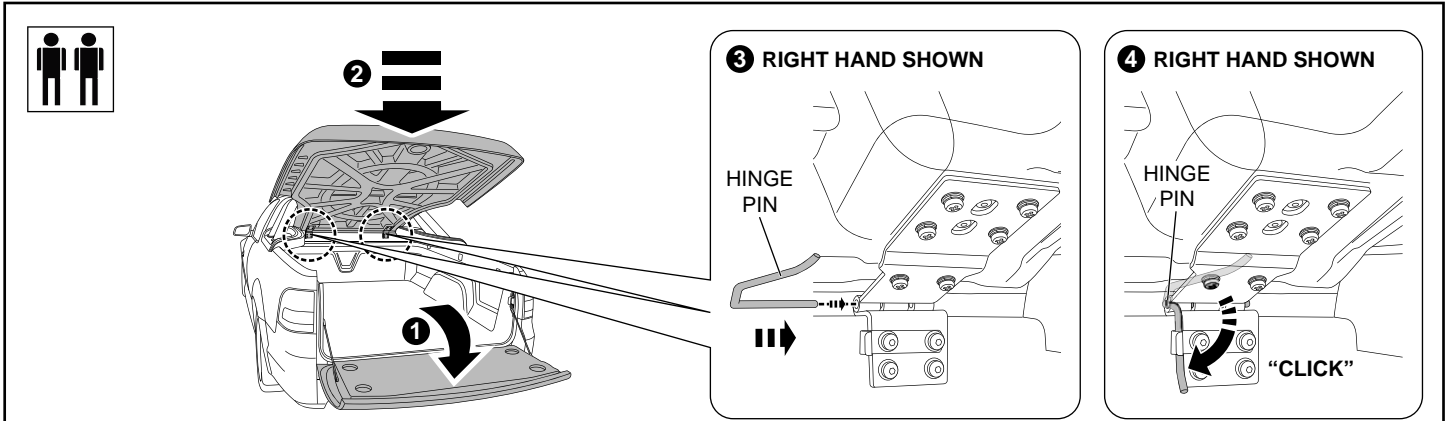


Diagram #44

44. Open vehicle's tailgate. Fit Tonneau Cover and secure hinges with hinge pins as shown. **See Dia #44.**

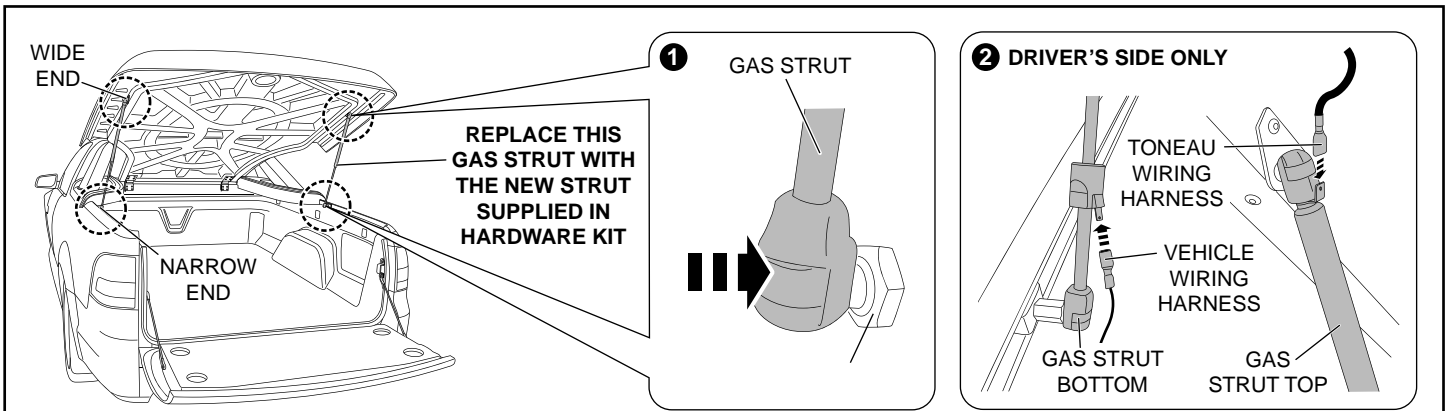


Diagram #45

45. Remove and discard the driver's side gas strut and replace it with the new gas strut supplied in the hardware kit. Attach the gas struts by clipping them into place as shown. **ENSURE THE NARROW END OF THE GAS STRUT MOUNTS TO THE VEHICLE.** Connect the wiring harness to the terminals on the driver's side gas strut as shown. **See Dia #45. NOTE: Attach gas strut with terminals to the driver's side of the vehicle.**

RETRO FIT REMOTE LOCKING 1PC/3PC TONNEAU COVER



IMPORTANT: If vehicle has a Sports Bar proceed to Diagram #46 below.
Otherwise, proceed to Diagram #47.

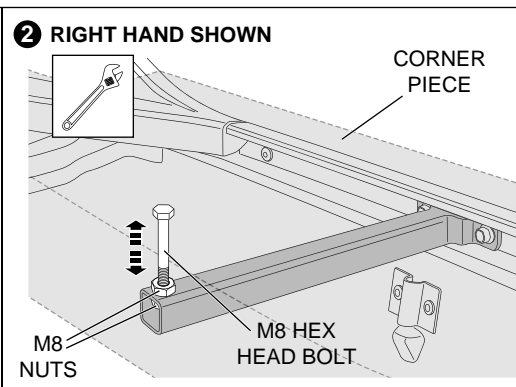
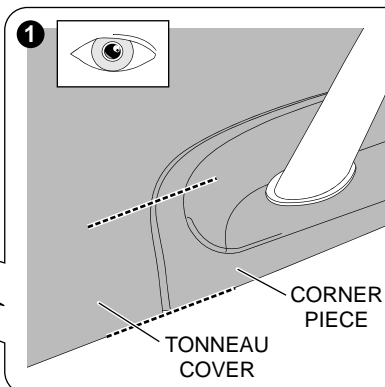
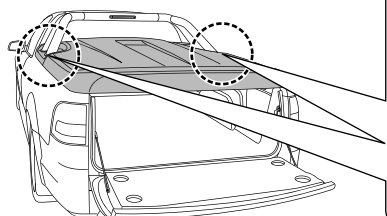
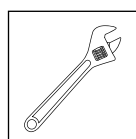


Diagram #46

46. Adjust jacking bolts until corner pieces are level with the main surface of the Tonneau Cover. Once in the correct position, lock the M8 nuts into position against the bracket using a spanner. Repeat for other side of vehicle. **See Dia #46.**

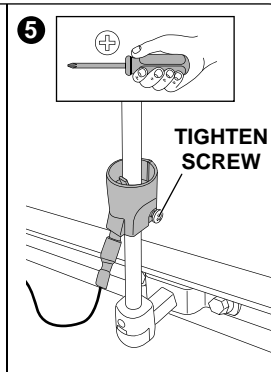
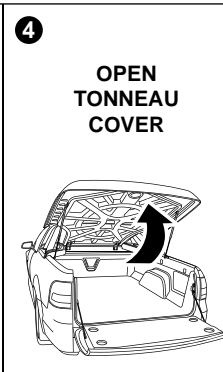
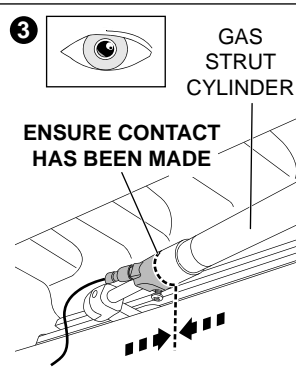
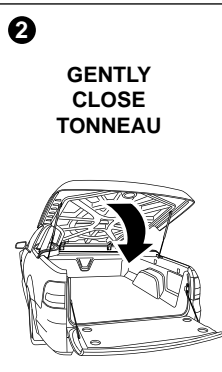
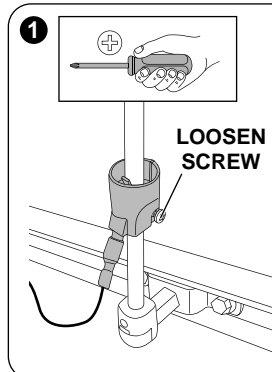


Diagram #47

47. Loosen the screw found on the terminal housing on the driver's side gas strut, until it can move up and down the strut freely. With the tailgate open, gently close the Tonneau Cover. Inspect the driver's side gas strut and ensure the terminal housing has come into contact with the gas strut's cylinder as shown. Finally, open the Tonneau Cover and tighten the screw on the terminal housing as shown. **See Dia #47.**

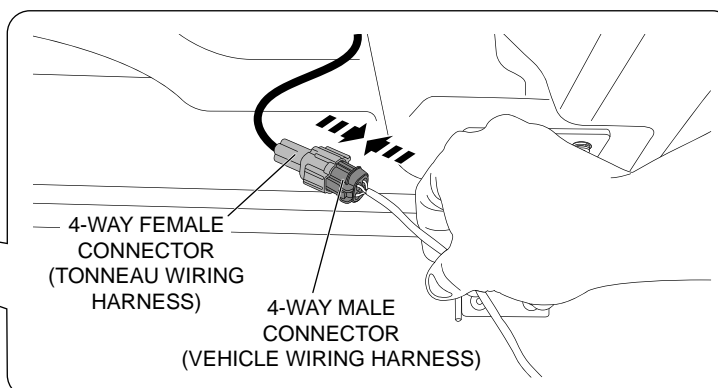
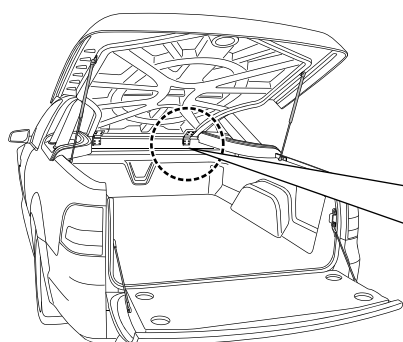


Diagram #48

48. Join the two 4-way connectors located at the front of the tub as shown. Push the terminals behind the bedliner after they are attached. **See Dia #48.**

RETRO FIT REMOTE LOCKING 1PC/3PC TONNEAU COVER

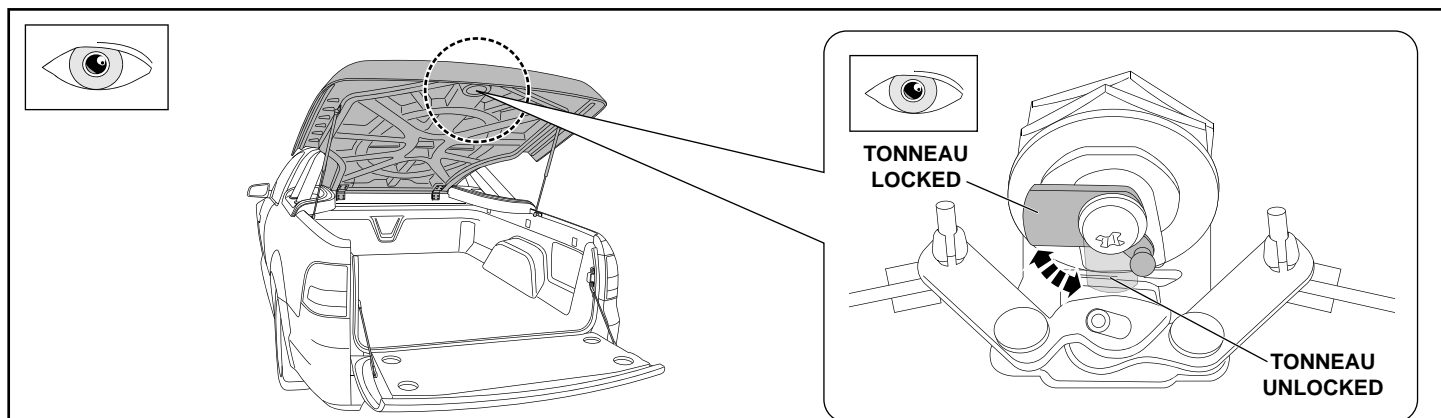


Diagram #49

49. Manually lock and unlock the Tonneau Cover using the key supplied. Check operation of the central unlocking mechanism by pressing the lock and unlock on your vehicle's key. Review operation through the inspection cover. Test operation of lock mechanism by pressing Tonneau's push button after you have pressed **lock** on the vehicle's key, and then again after you have pressed **unlock** on the vehicle's key. Finally, replace the inspection cover. **See Dia #49.**

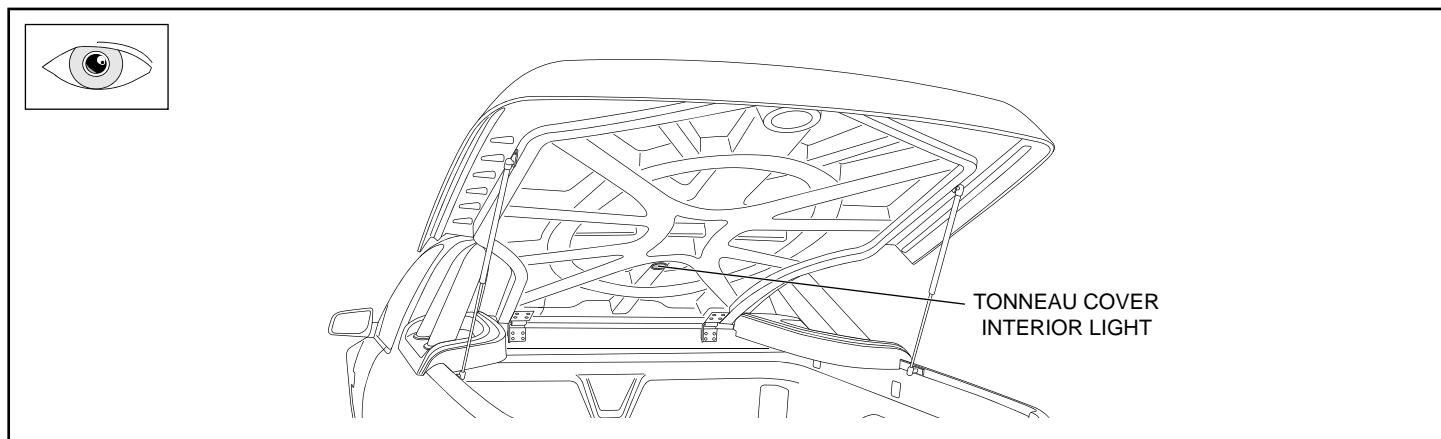


Diagram #50

50. Open and close the Tonneau Cover with the tailgate open to check whether or not the Tonneau Cover interior light is functioning correctly. Ensure that the light turns **on** when the Tonneau is open and turns **off** when the Tonneau is closed. If the light **DOES NOT** work, check adjustment of the gas strut switch (refer to **Diagram #47**). **See Dia #50.**

RETRO FIT REMOTE LOCKING 1PC/3PC TONNEAU COVER

REMOVAL OF TONNEAU COVER

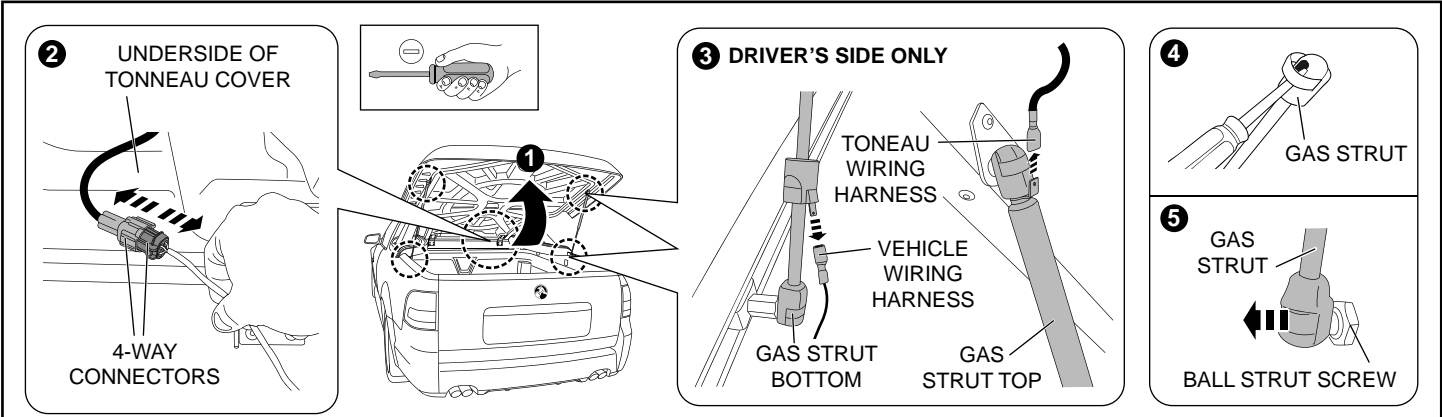
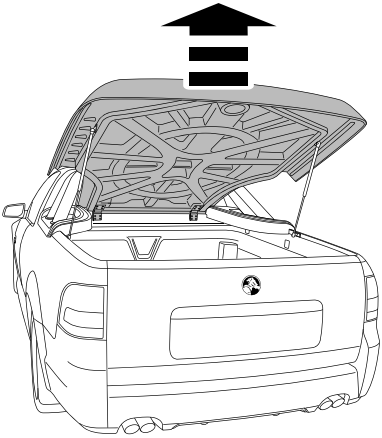


Diagram #1

1. Open Tonneau Cover, pull the 4-way connectors out from behind the bedliner and disconnect them. Disconnect the wiring harness from the terminals on the driver's side gas strut. Detach gas struts by inserting a small screw driver and adjusting the spring clip on the strut as shown. **See Dia #1. NOTE: Do not remove the spring clip. Only a small amount of levering is required to detach.**

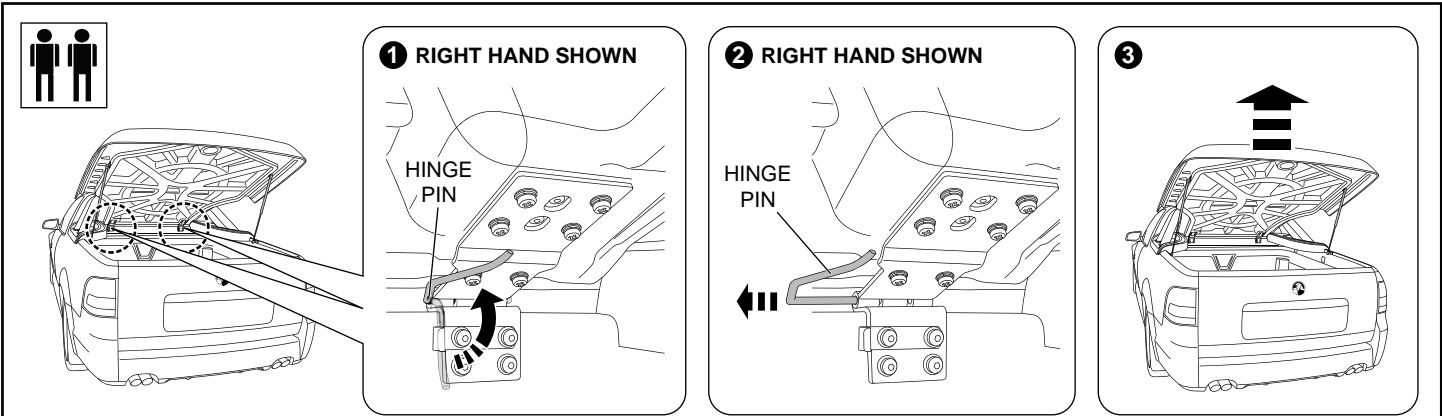
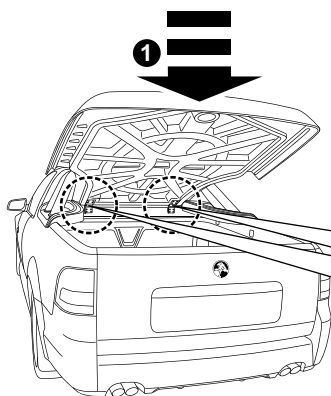
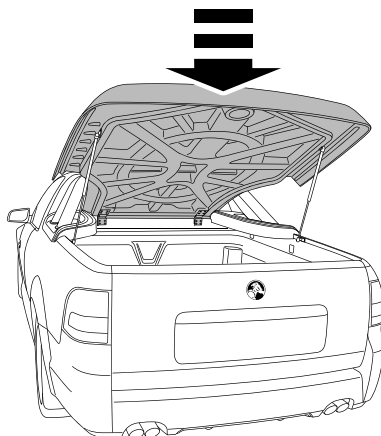


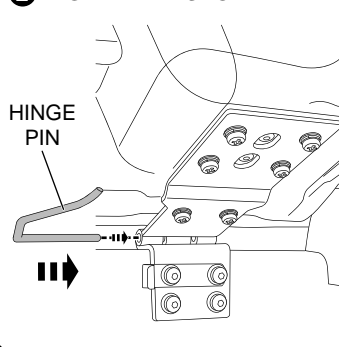
Diagram #2

2. Remove hinge pins and remove the Tonneau Cover as shown. **See Dia #2.**

REPLACEMENT OF TONNEAU COVER



2 RIGHT HAND SHOWN



3 RIGHT HAND SHOWN

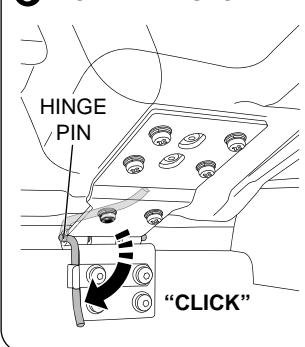


Diagram #1

1. Fit Tonneau Cover and secure hinges with hinge pins as shown. **See Dia #1.**

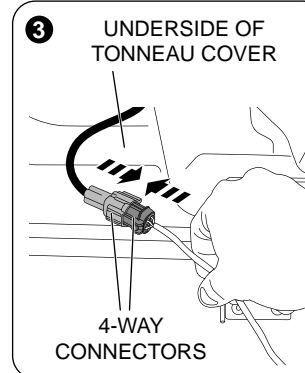
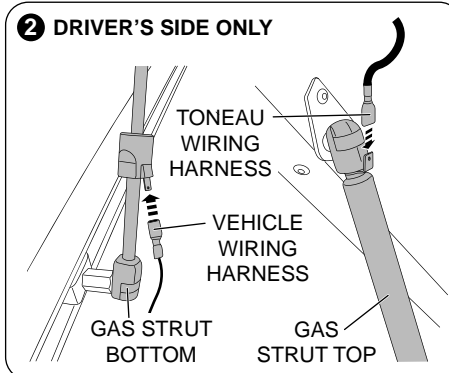
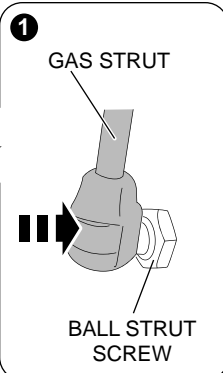
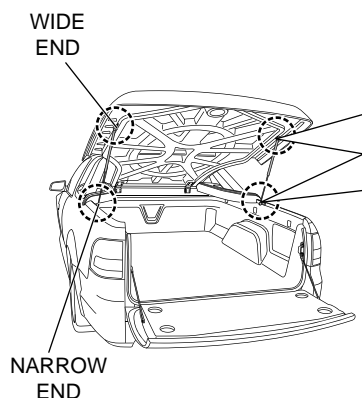
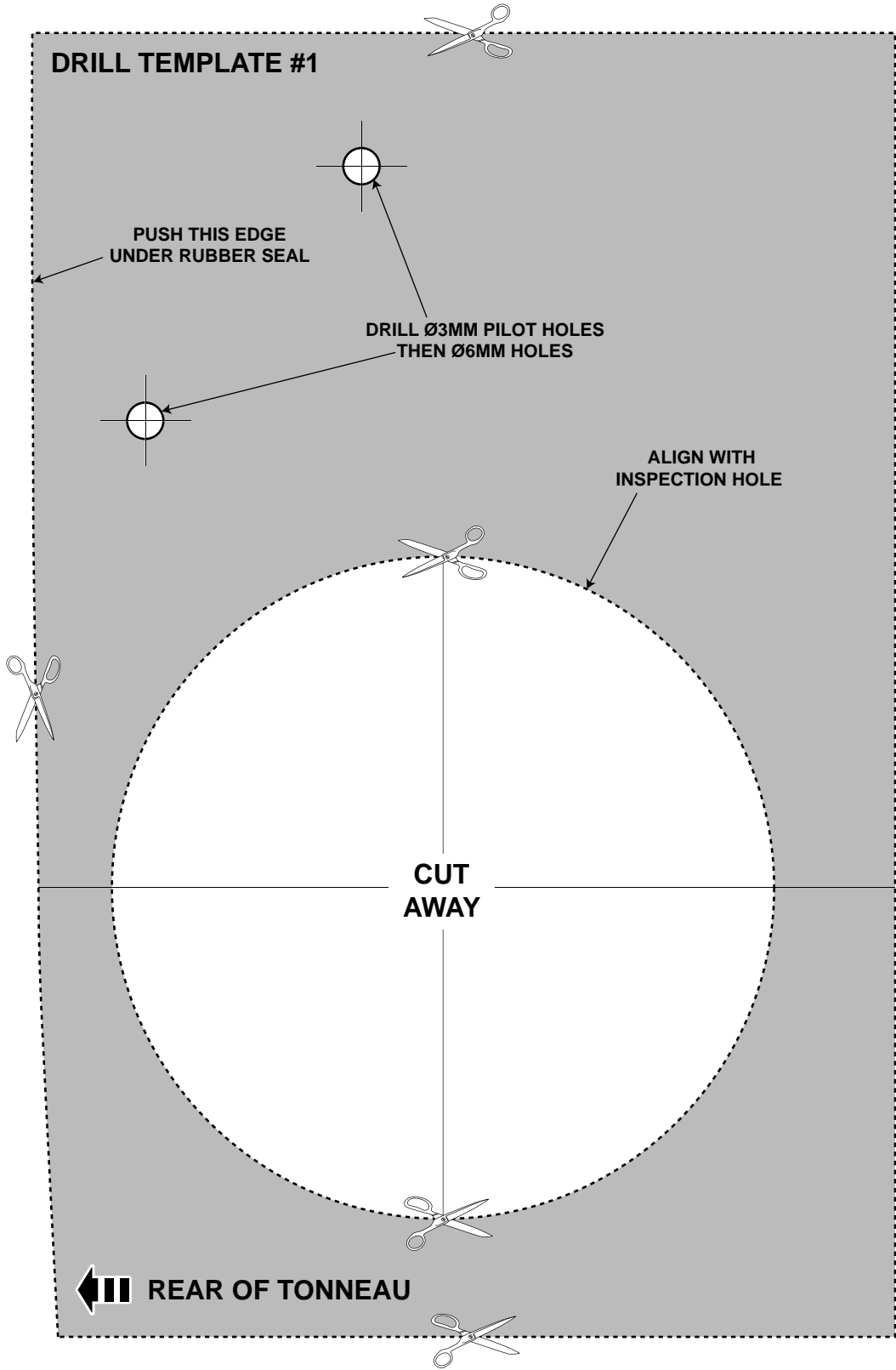


Diagram #2

2. Attach gas struts by clipping into place. **ENSURE THE NARROW END OF THE GAS STRUT MOUNTS TO THE VEHICLE.** Connect the wiring harness to the terminals on the driver's side gas strut as shown. Join the two 4-way connectors located at the front of the tub and push them behind the bedliner. **See Dia #2. NOTE: Refer to Diagram #47: Ensure the gas strut switch works correctly and adjust if necessary.**

DRILL TEMPLATE #1



DRILL TEMPLATE #2

