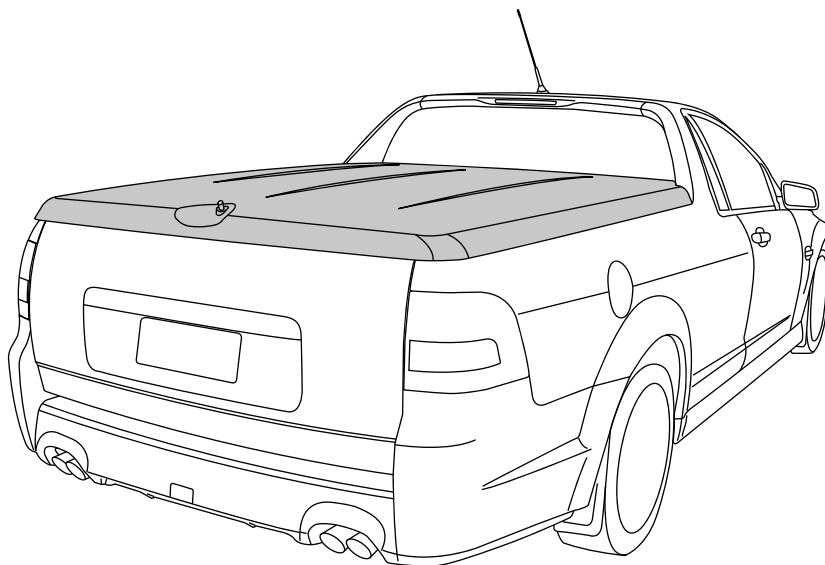


RETRO FIT REMOTE LOCKING 1PC TONNEAU COVER INSTALLATION INSTRUCTIONS Holden VF Ute 2014



Care Instructions:



Clean Tonneau Cover with a mild detergent and water solution.



Do not use abrasive cleaners or solvents.

Place these instructions in vehicle's glove box after installation is complete

RECOMMENDED TOOL LIST

Drill with Ø5 Drill Bit	Flat Head Screwdriver	Spanners & Sockets
Phillips Head Screwdriver	Torx Head Screwdriver and Bits	Centre Punch
Hole Saw 45mm		

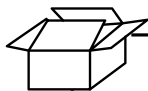
IMPORTANT:

- Read instructions carefully before installation. It is strongly recommended that installation is conducted by an authorized dealer.
- This product must be installed exactly as specified in these instructions. Failure to do so may result in improper fit and/or retention.
- Recommend installation by 2 people.
- Do not cycle remote key fob continuously or the actuator for operation of the remote locking system will burn out.

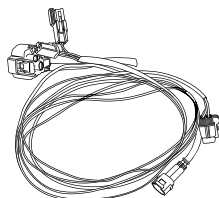
Maintenance:

The locking mechanisms & Latches only require occasional lubrication with Graphite Powder.
DO NOT use any other lubricants or oils.
Using alternative products will VOID Warranty.

PARTS CHECK SHEET

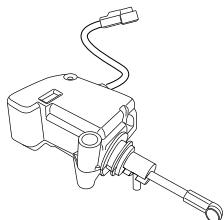


1



Vehicle Wiring Harness
(LOOM0064)
Qty - 1

2



Actuator Assembly
(LOCK0004-1)
Qty - 1

3



Long Self-Tapping Screw
(in bag with LOCK0004-1)
Qty - 2

4



Phillips Head Screw
(SCRW0648-2)
Qty - 1

5



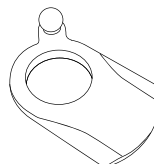
Flat Washer
(WASH0153)
Qty - 1

6



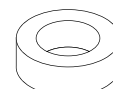
Star Washer
(WASH0163)
Qty - 1

7



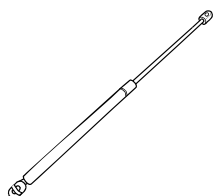
Lock Cam with Ball Stud
(CLIP2419-3)
Qty - 1

8



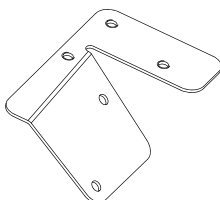
Plastic Spacer
(FAST0466)
Qty - 1

9



Gas Strut
(STRT0001-2)
Qty - 1

10



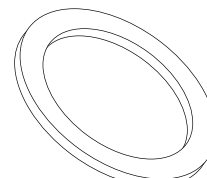
Actuator Bracket
(CLIP2447BL)
Qty - 1

11



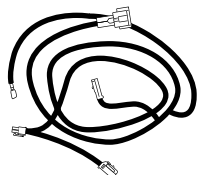
M6 Phillips Head Screw
(SCRW0697)
Qty - 3

12



Gasket
(TAPE0614)
Qty - 1

13



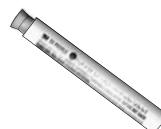
Tonneau Wiring Harness
(LOOM0065)
Qty - 1

14



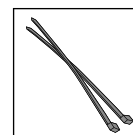
Alcohol Wipe
(MISC0052)
Qty - 1

15



Primer Stick
(MISC1365)
Qty - 1

16



Zip Ties
(FAST0254)
Qty - 3

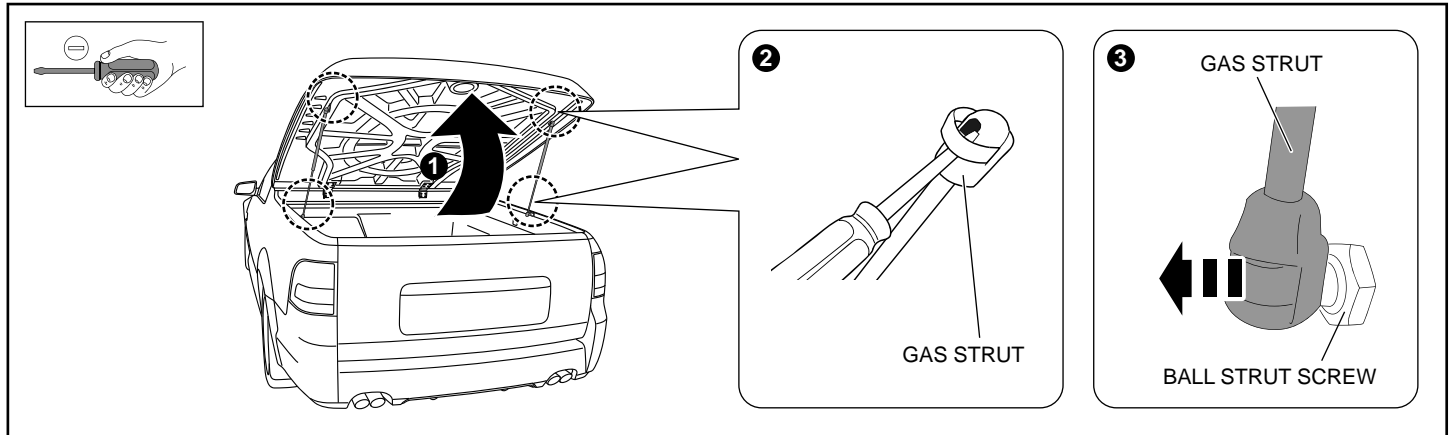


Diagram #1

1. Open Tonneau Cover and detach gas struts by inserting a small screw driver and adjusting the spring clip on the strut as shown. **See Dia #1. NOTE: Do not remove the spring clip. Only a small amount of levering is required to detach.**

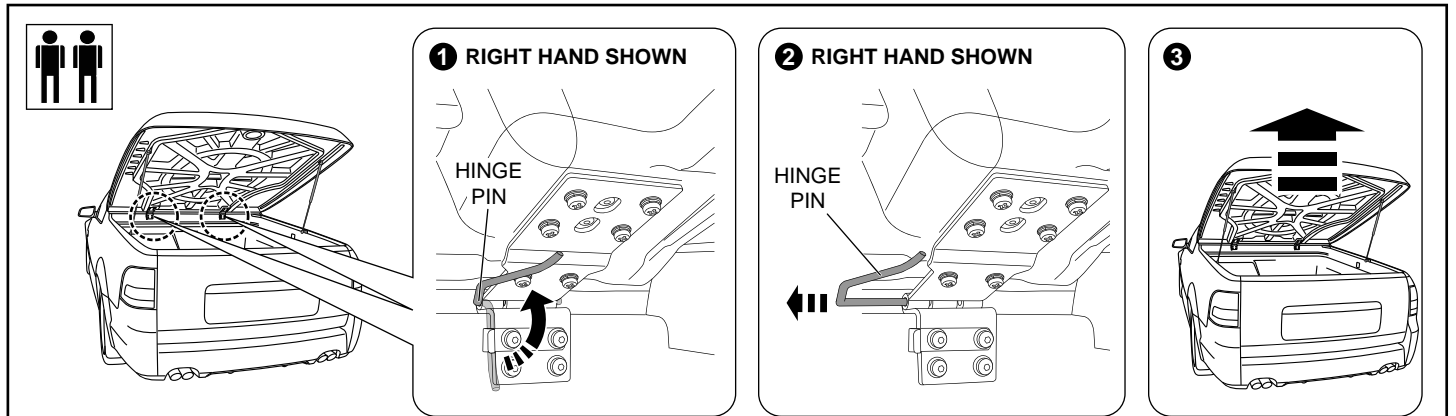


Diagram #2

2. Remove hinge pins and then remove the Tonneau Cover as shown. **See Dia #2.**

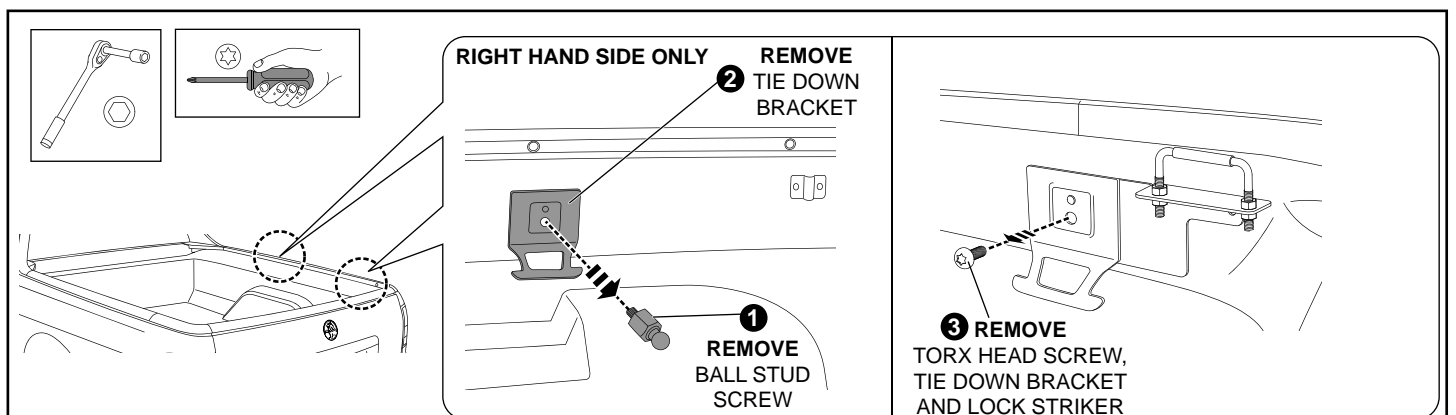


Diagram #3

3. Remove and retain the ball stud screw and the tie down bracket from the right hand side of the tub as shown. Remove and retain Torx head screw and tie down bracket. Let the striker bracket hang loose attached with the rivet. **See Dia #3.**

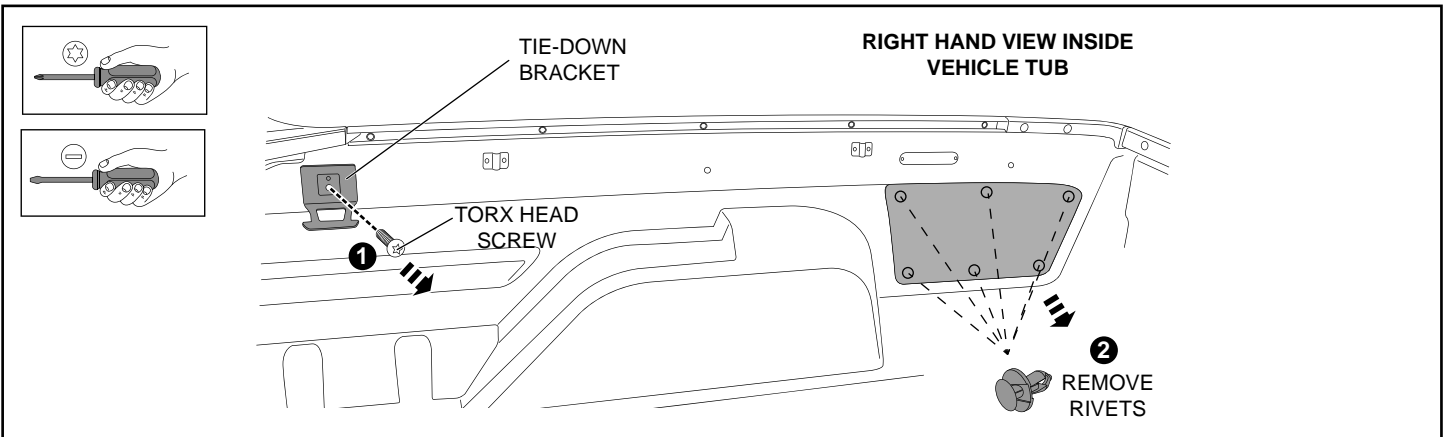


Diagram #4

4. Remove and retain the remaining tie-down bracket on the right hand side of the bed using a torx-head screwdriver as shown. Remove and retain the six (6) push rivets and panel as shown. **See Dia #4.**

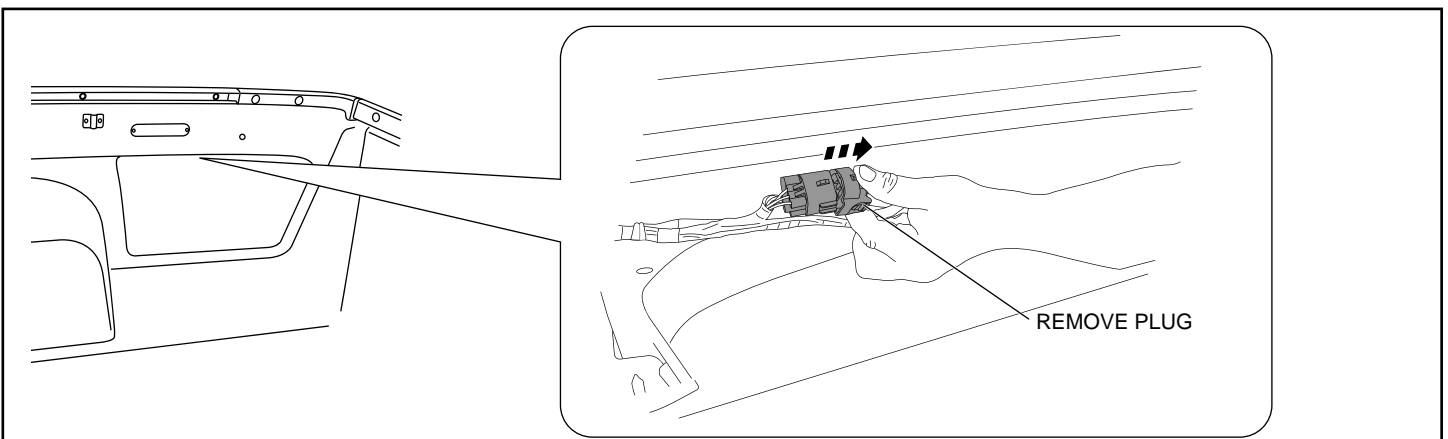


Diagram #5

5. Locate wiring in the side panel of the vehicle. Remove the wiring plug from the connector as shown. **See Dia #5.**
NOTE: This connector is located above the wheel arch towards the rear of the vehicle.

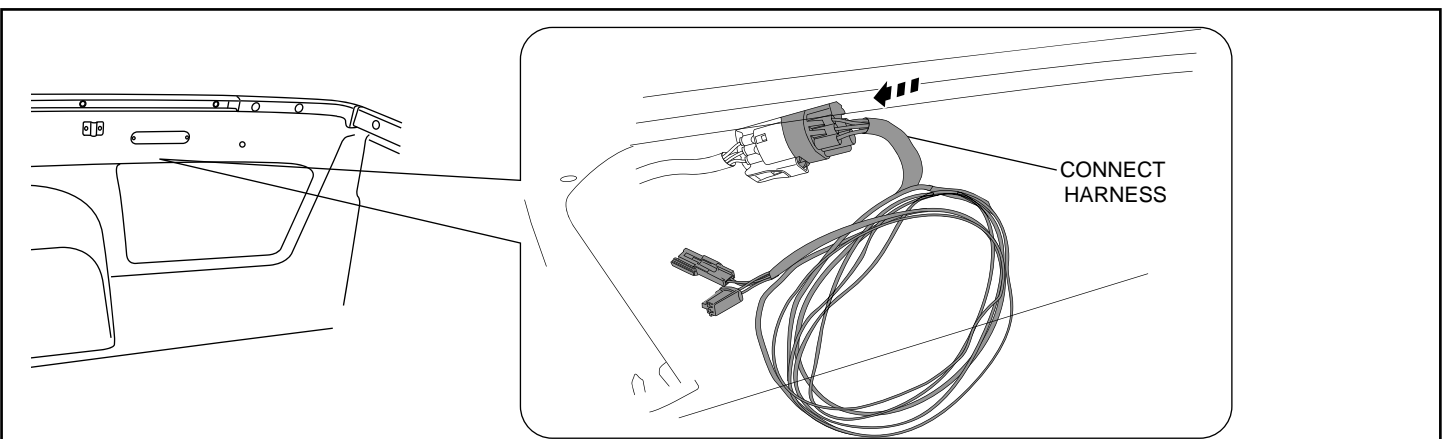


Diagram #6

6. Connect the Vehicle Wiring Harness plug to the previously disconnected plug as shown. **See Dia #6.**

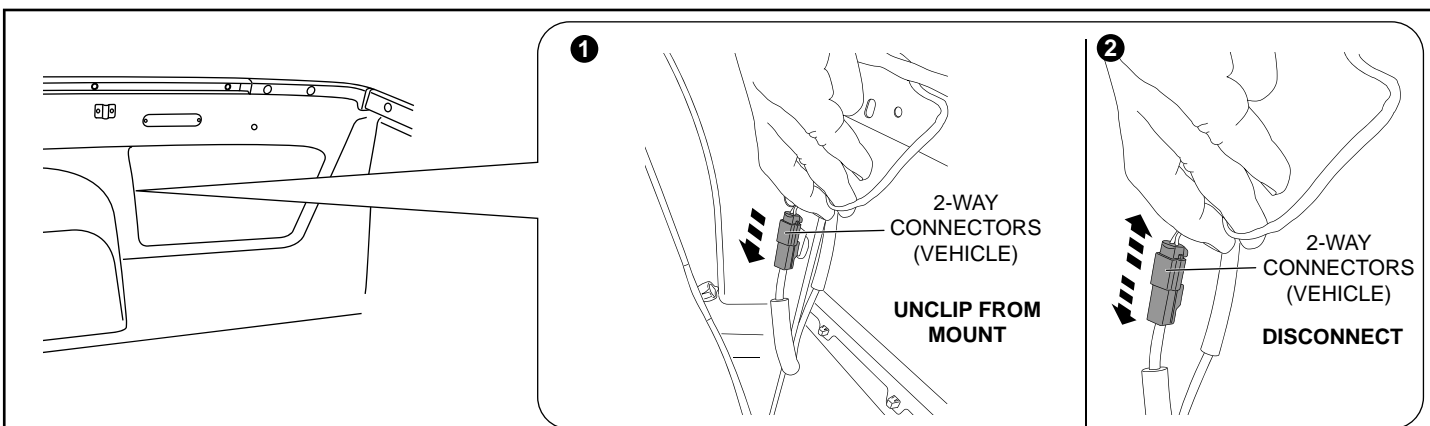


Diagram #7

7. Find the white 2-way connectors on the vehicle (directly behind the wheel arch) and unclip them from the vehicle as shown. Disconnect the white 2-way connectors. **See Dia #7.**

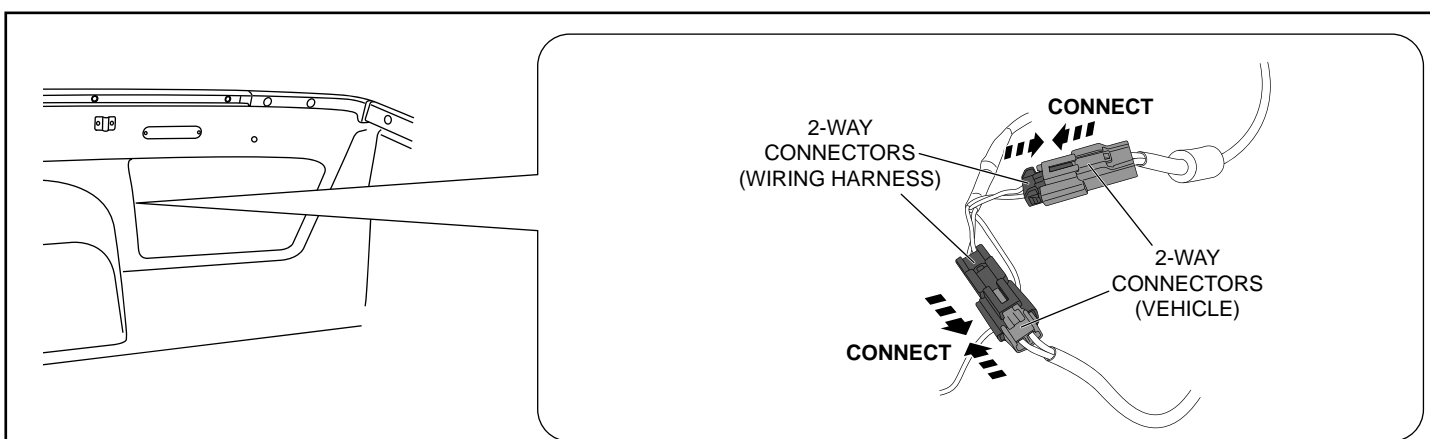


Diagram #8

8. Connect the white 2-way connectors on the wiring harness to the white 2-way connectors from the vehicle as shown. Finally clip the white 2-way connector back onto the vehicle. **See Dia #8.**

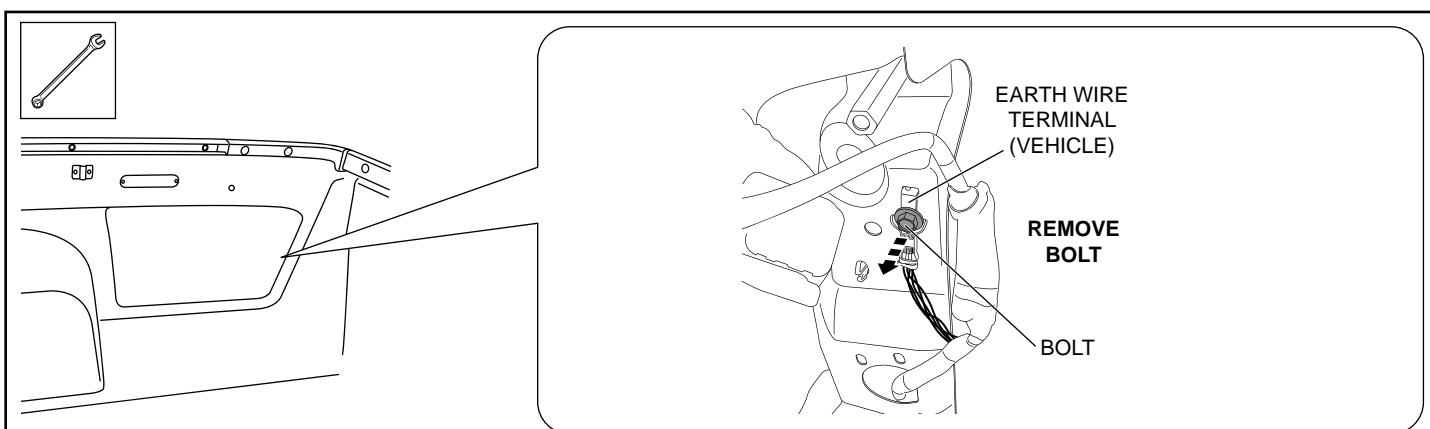


Diagram #9

9. Find the earth wire terminal behind the bedliner near the vehicle's tailgate and remove the bolt holding the terminal together as shown. **See Dia #9.**

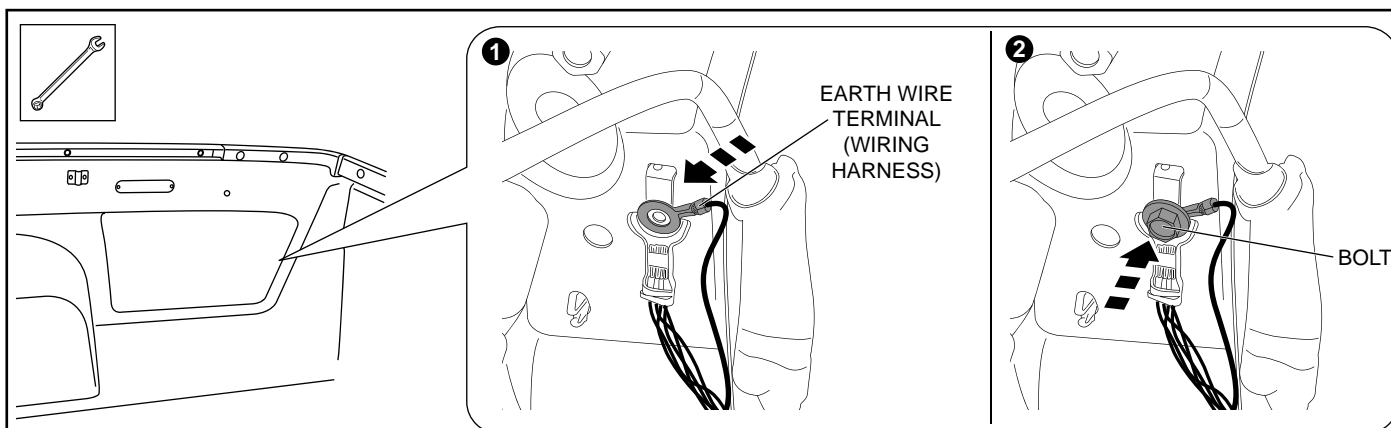


Diagram #10

10. Locate the earth wire from the wiring harness and locate it over the hole that the bolt was just removed from. While holding everything in place, re-attach the bolt to the earth wire terminal on the vehicle as shown. **See Dia #10.**

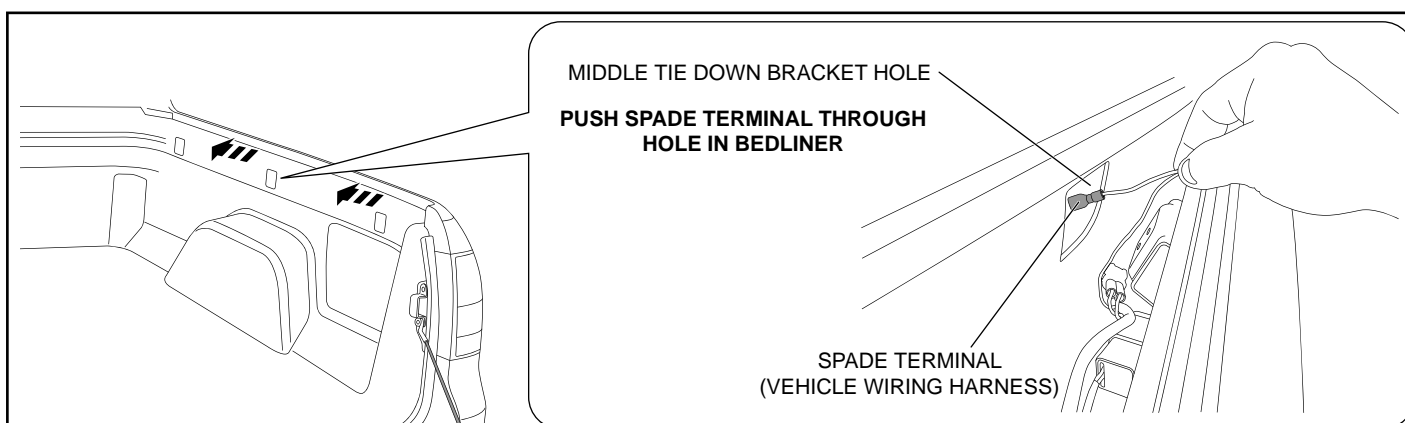


Diagram #11

11. Start feeding the Vehicle Wiring Harness behind the tubliner towards the front of the tub, attaching it to the existing vehicle harness using cable ties in the middle tie down bracket hole and push the spade terminal from the vehicle wiring harness through it as shown. **See Dia #11.**

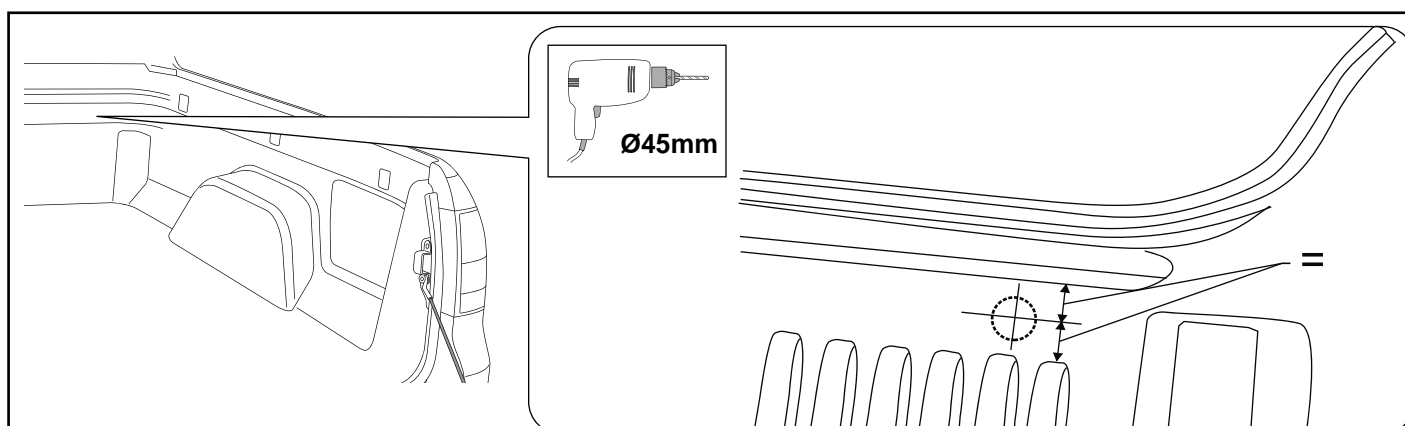


Diagram #12

12. Pull back tubliner from the front of the tub. Use a 45mm hole saw to drill a in the centre of the flat area of the bed liner above the second rib in from the right on the front face of the bed liner. **See Dia #12.**

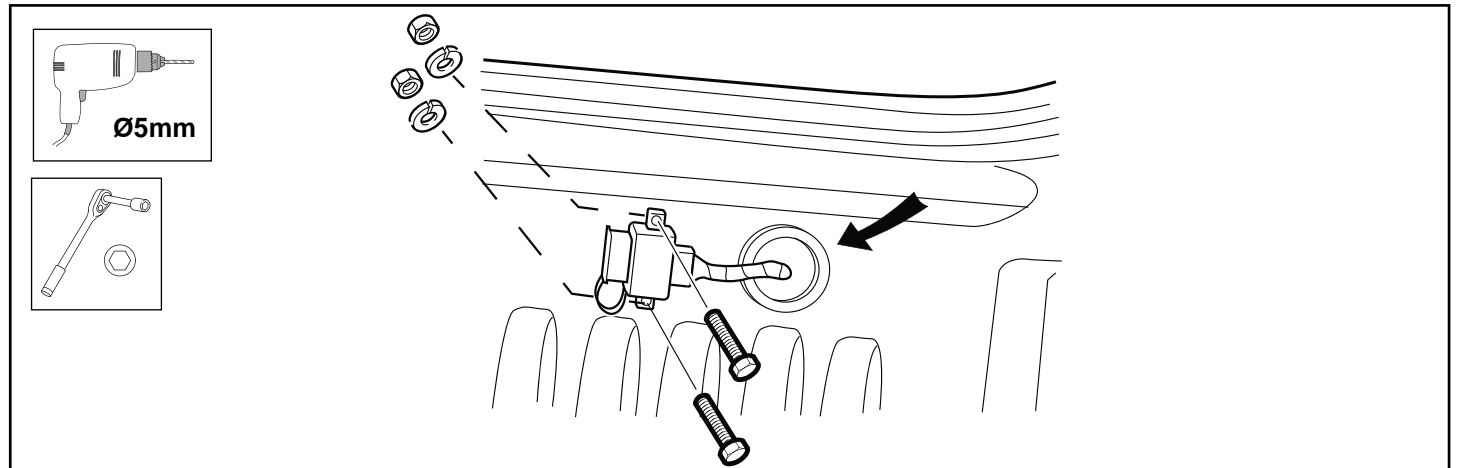


Diagram #13

13. Feed the vehicle wiring harness through the hole from inside the tubliner to the rear surface. Seat the grommet on the hole. Position the harness and plug horizontally directed to the centre of the vehicle. Drill the fixing holes and use the fixings supplied with the wiring harness to mount the plug to the tubliner. **See Dia #13.**

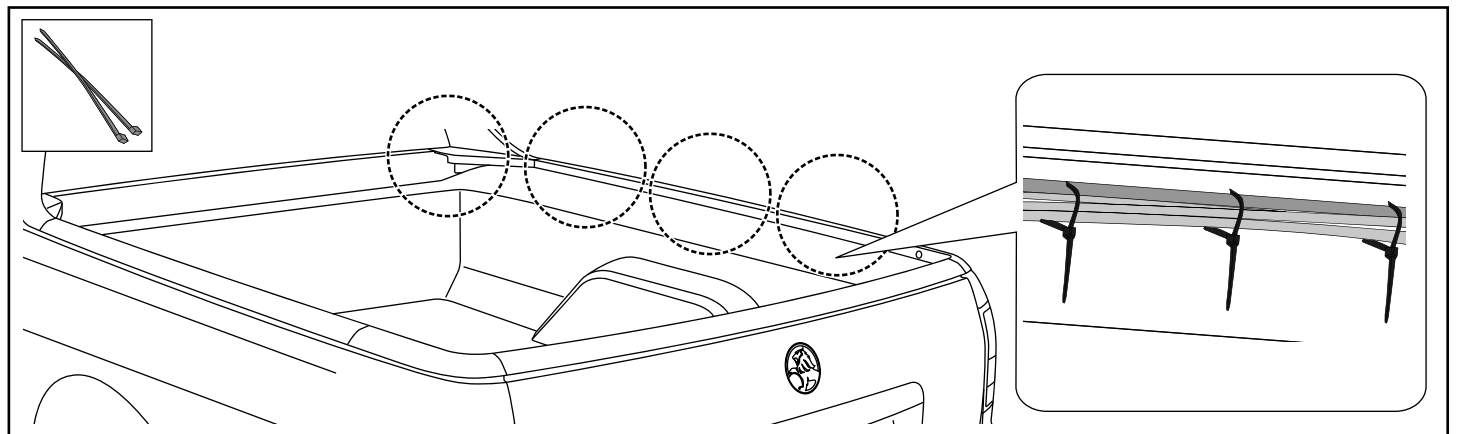


Diagram #14

14. Zip tie the vehicle harness to the existing vehicle harness along the tub behind the tubliner as shown. **See Dia #14.**

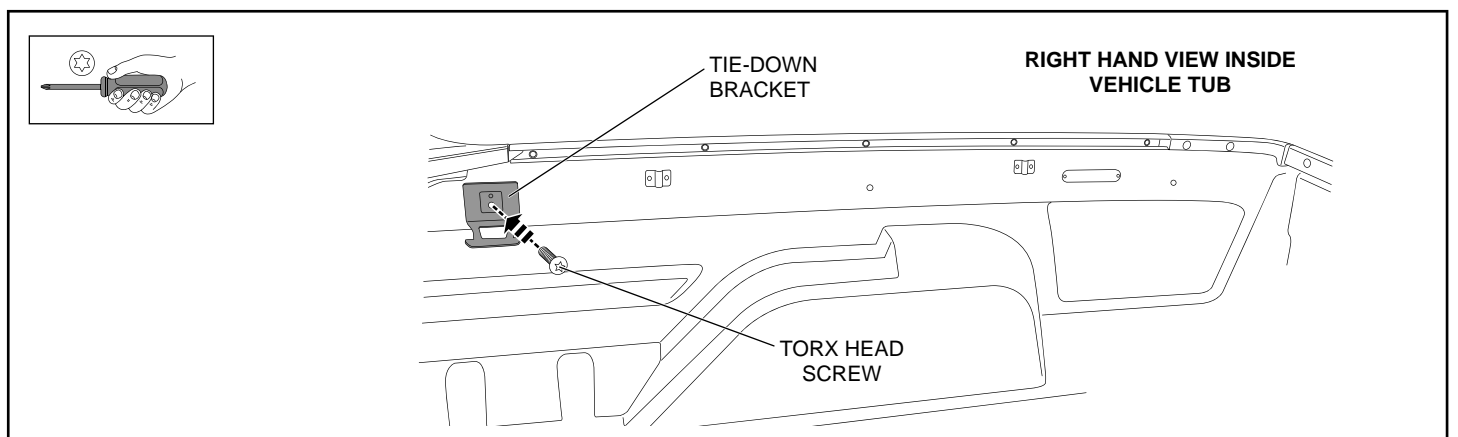


Diagram #15

15. Re-attach the bedliner by lifting it back into position, re-install the front tie-down bracket. **See Dia #15.**

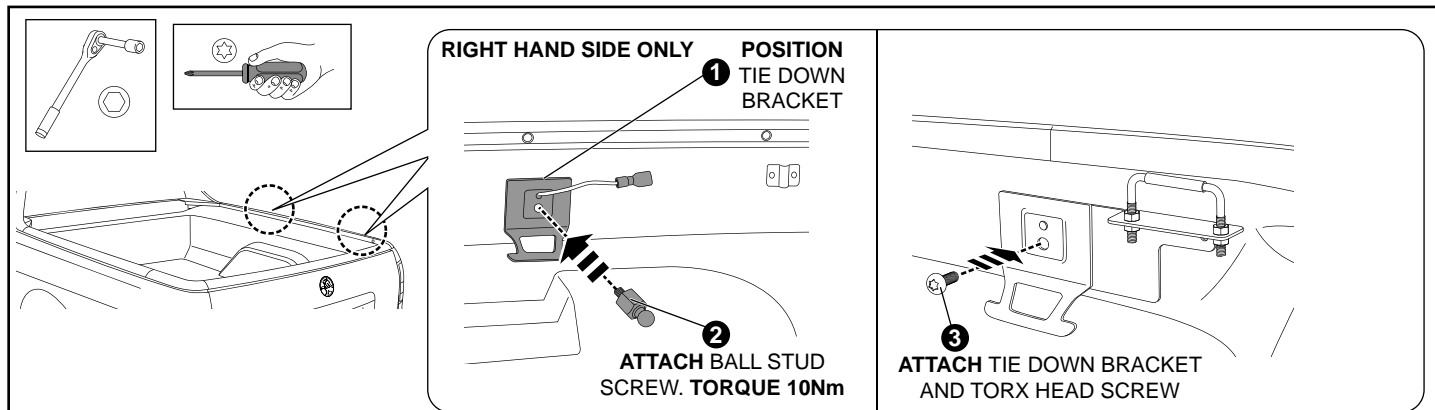


Diagram #16

16. Position the right hand side tie down bracket and attach the ball stud screw as shown. Tighten to torque 10Nm. Align the right hand side lock striker bracket and attach it to the side rail panel with the tie down bracket and torx head screw as shown. See Dia #16.

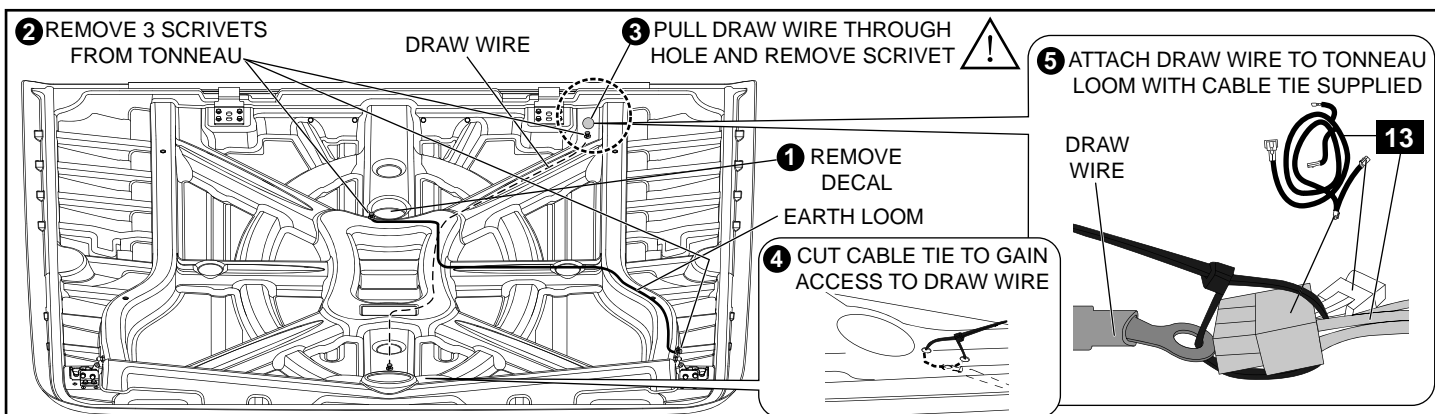


Diagram #17

17. Remove black decal located over hole as shown. Locate the (3) scrivenets and remove from the tonneau. Do Not remove the scrivenets from the earth loom or draw wire at this stage. Pull draw wire back through large hole near hinges and remove scrivenet from this end of draw wire. Cut cable tie near the lock to gain access to the draw wire. Attach tonneau loom to this end of draw wire with a cable tie as shown, **Do Not pull cable tie tight.** See Dia #17.

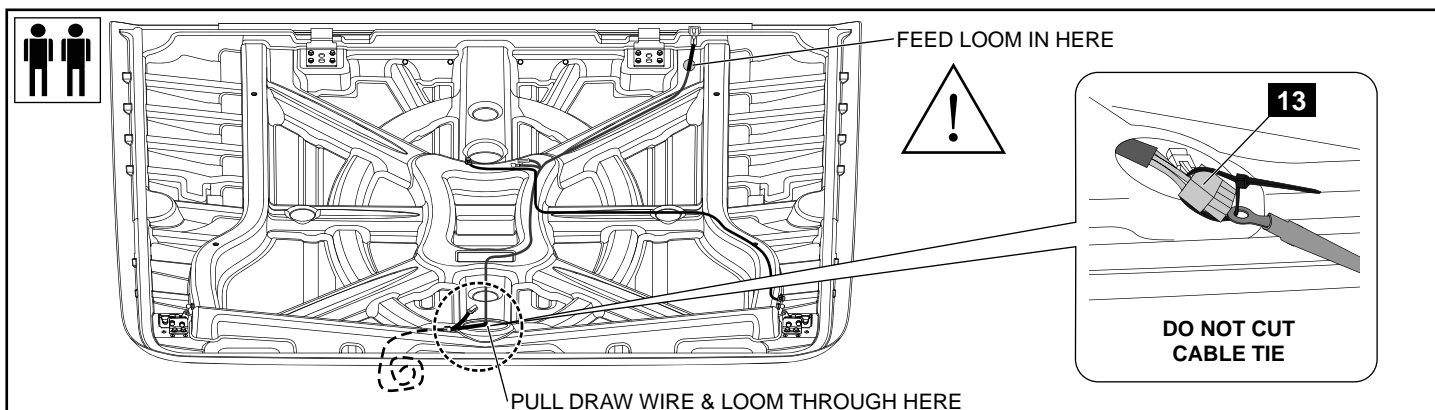


Diagram #18

18. Pull draw wire through the lock cover hole. This requires one person to feed the loom and the other to pull the draw wire. **IMPORTANT: This is to be done carefully and slowly. Leave the draw wire attached to the tonneau loom.** See Dia #18.

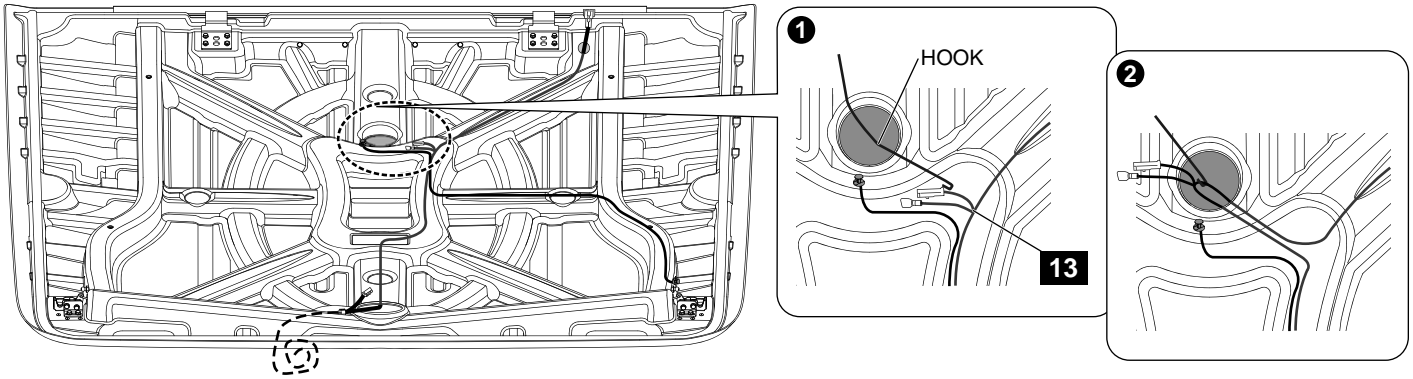


Diagram #:19

19. Using a hook locate the harness through the light hole & pull out light connector & earth terminal branches. You may need to re-pull the draw wire at the lock cover to access connectors. See Dia #19.

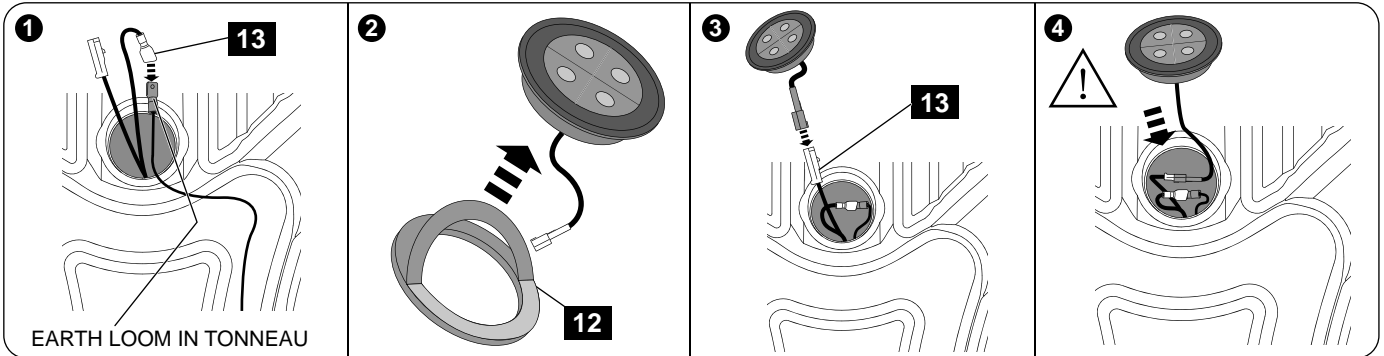


Diagram #:20

20. Remove scrivet and pull earth loom through light hole. Connect earth terminal to terminal on tonneau loom. Clean the surface on the lamp where the gasket (12) will be attached as well as the outside perimeter of the light opening in the tonneau cover. Clean with alcohol wipe (14) first and apply primer stick (15) next. Allow to dry. Remove tape liner from one side of double sided foam tape gasket and fit gasket to the interior light and apply pressure to ensure maximum adhesion. Connect the 2-way male connector from the tonneau wiring loom to the female connector of the interior light. Remove tape liner from double sided foam tape gasket and insert interior light into the tonneau cover and apply pressure to ensure maximum adhesion. **IMPORTANT: Ensure all wiring for the interior light and earth loom is contained inside the tonneau cover before installing the interior light. See Dia #20.**

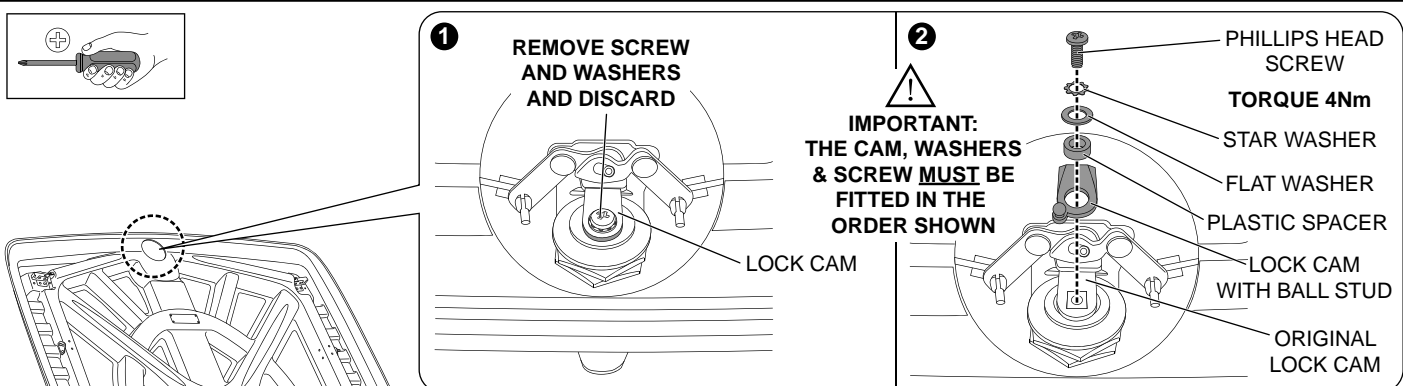


Diagram #21

21. Lay the Tonneau Cover upside down on a sheet or mat to prevent scratching. Remove the inspection cover to gain access to the Tonneau's locking mechanism. Remove and discard the screw and washers holding the lock cam in place as shown. **Do not remove the lock cam.** Fit the ball stud lock cam, plastic spacer, flat washer and star washer to the locking mechanism using the Phillips head screw provided. **TIGHTEN TO TORQUE 4Nm. See Dia #21. IMPORTANT: Ensure both lock cams are aligned with each other and with the locking mechanism as shown.**

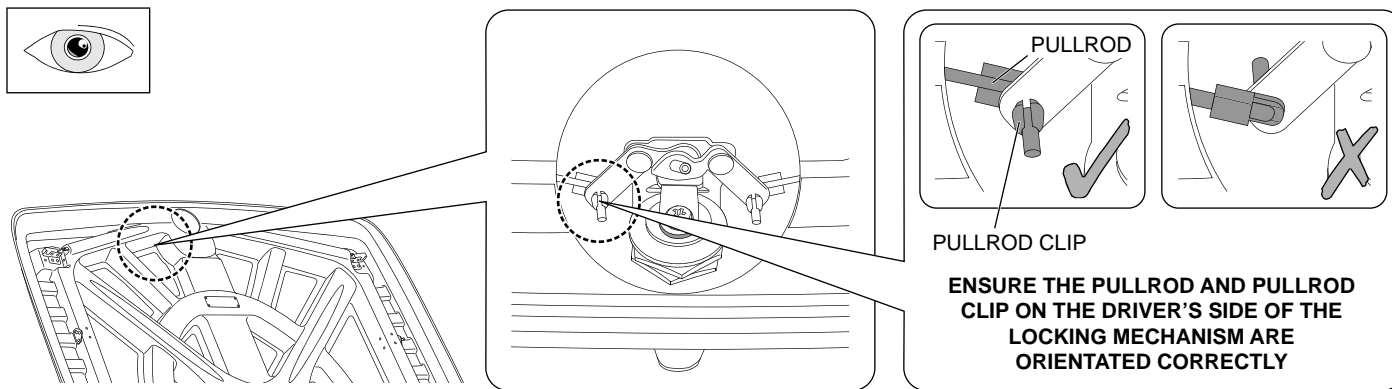


Diagram #22

22. Ensure the pullrod and pullrod clip on the **DRIVER'S SIDE** of the locking mechanism are orientated correctly as shown. If they are not orientated correctly, remove the pullrod and pullrod clip and re-attach them correctly. You may need to replace the pullrod clip with a new one provided with the hardware kit. **See Dia #22.**

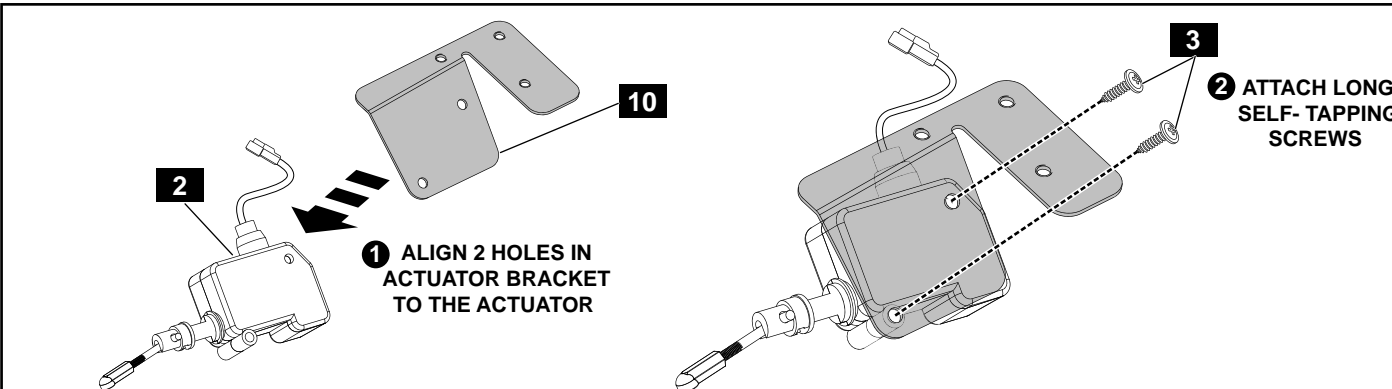


Diagram #23

23. Align the two (2) holes in the actuator bracket to the holes in the actuator as shown, ensure correct orientation. Secure the actuator to the actuator bracket with two (2) long self-tapping screws as shown. **See Dia #23.**

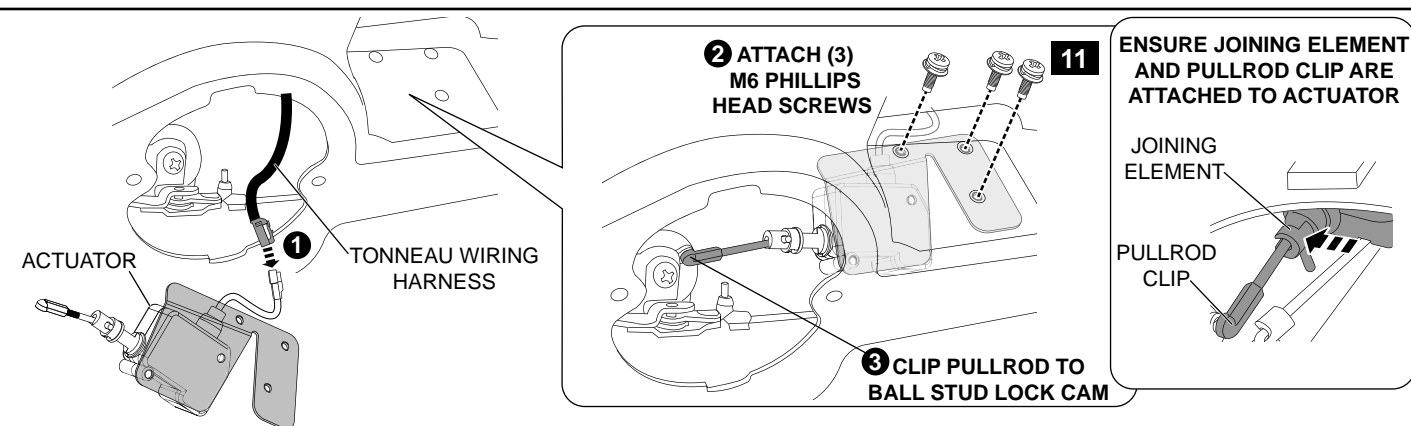


Diagram #24

24. Connect the 2-way connector from the Tonneau wiring harness with the actuator as shown. Position the actuator inside the Tonneau Cover and attach with three (3) M6 phillips head screws as shown. Clip the pullrod from the actuator onto the lock cam with ball stud as shown. **See Dia #24.**

NOTE: Ensure the joining element and pull rod clip are attached to the actuator. If they aren't, clip them into place as shown. Also ensure that all the wiring is moved out of the way and cannot interfere with the locking mechanism. Replace any bedrail foam tape that was damaged with the foam tape provided in the hardware kit.

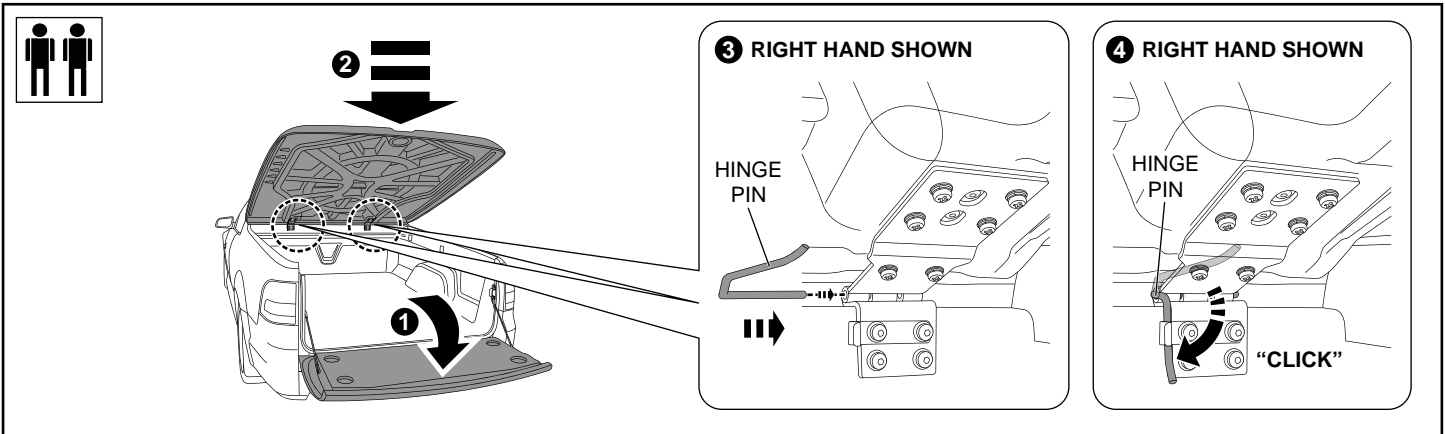


Diagram #25

25. Open vehicle's tailgate. Fit Tonneau Cover and secure hinges with hinge pins as shown. **See Dia #25.**

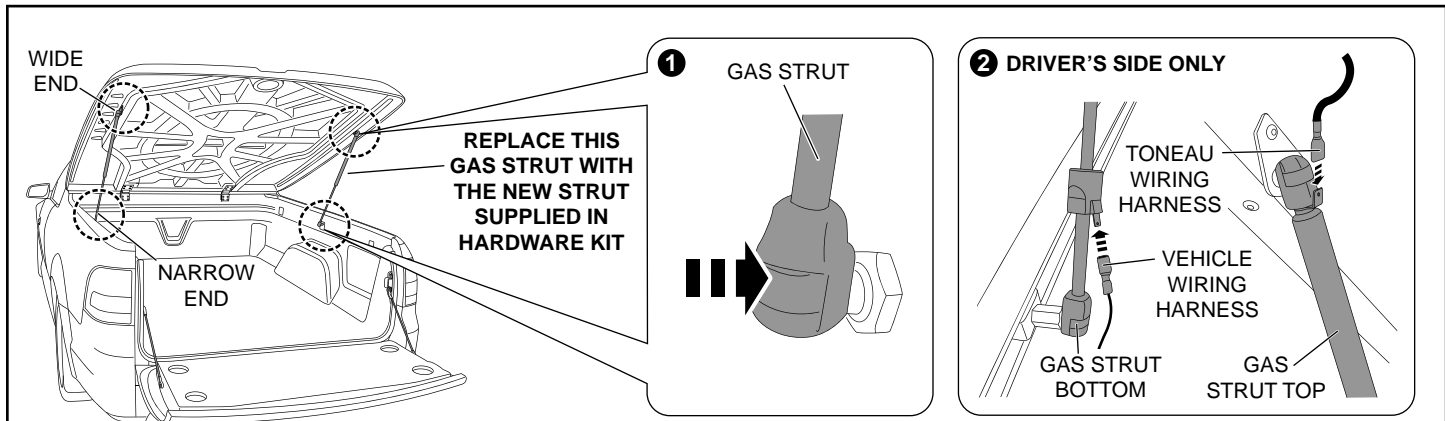


Diagram #26

26. Remove and discard the driver's side gas strut and replace it with the new gas strut supplied in the hardware kit. Attach the gas struts by clipping them into place as shown. **ENSURE THE NARROW END OF THE GAS STRUT MOUNTS TO THE VEHICLE.** Connect the wiring harness to the terminals on the driver's side gas strut as shown. **See Dia #26. NOTE: Attach gas strut with terminals to the driver's side of the vehicle.**

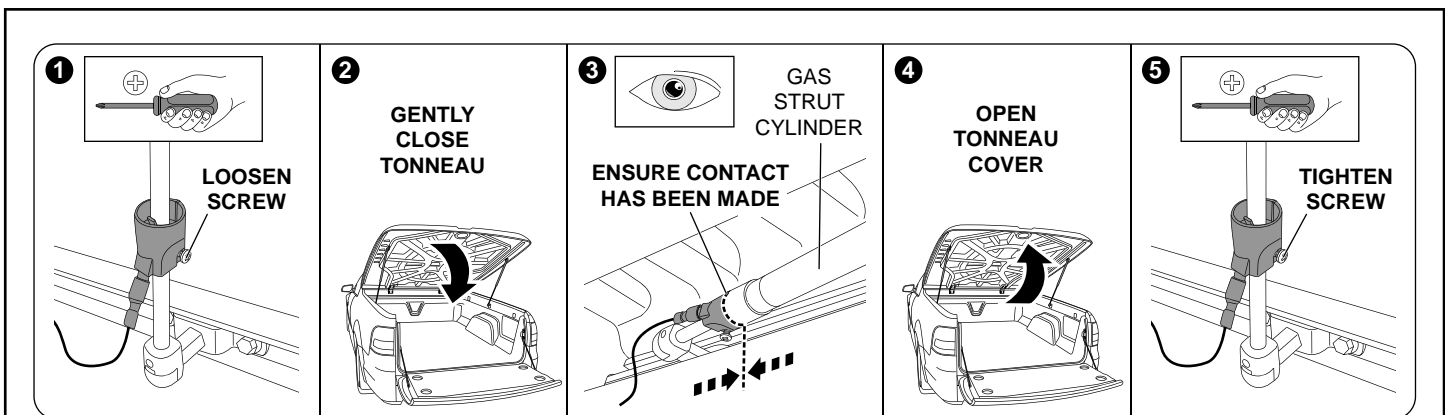


Diagram #27

27. Loosen the screw found on the terminal housing on the driver's side gas strut, until it can move up and down the strut freely. With the tailgate open, gently close the Tonneau Cover. Inspect the driver's side gas strut and ensure the terminal housing has come into contact with the gas strut's cylinder as shown. Finally, open the Tonneau Cover and tighten the screw on the terminal housing as shown. **See Dia #27**

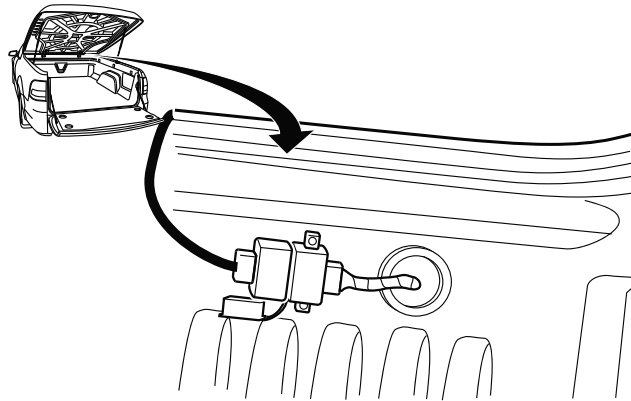


Diagram #28

28. Join the two 4-way connectors located at the front of the tub as shown. Push the terminals behind the bedliner after they are attached. **See Dia #28.**

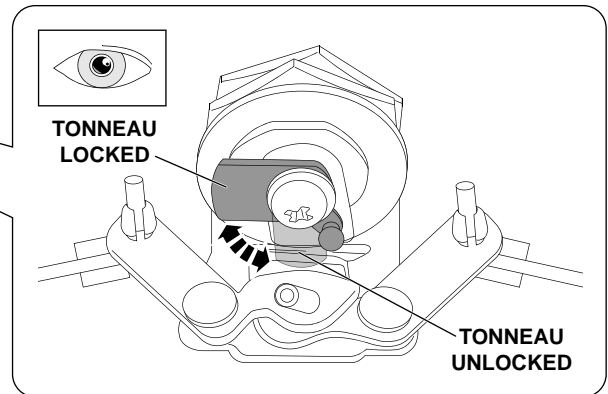
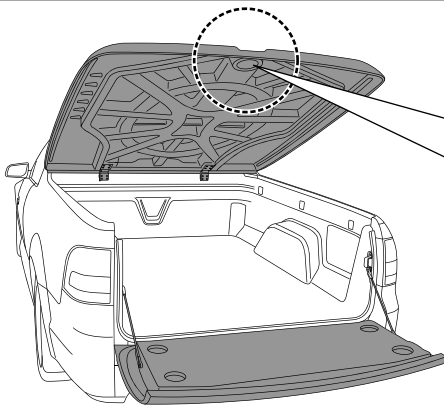
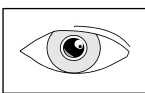
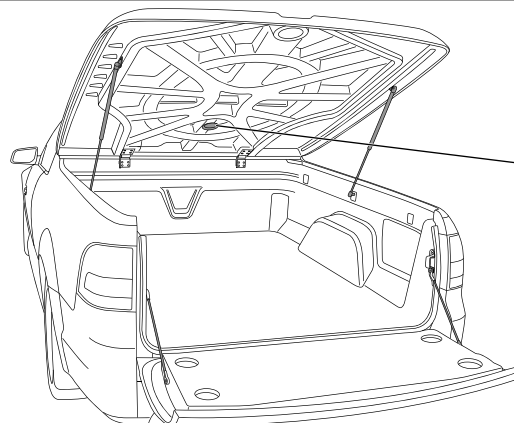
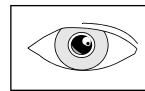


Diagram #29

29. Manually lock and unlock the Tonneau Cover using the key supplied. Check operation of the central unlocking mechanism by pressing the lock and unlock on your vehicle's key. Review operation through the inspection cover. Test operation of lock mechanism by pressing Tonneau's push button after you have pressed **lock** on the vehicle's key, and then again after you have pressed **unlock** on the vehicle's key. Finally, replace the inspection cover. **See Dia #29.**



TONNEAU COVER
INTERIOR LIGHT

Diagram #30

30. Open and close the Tonneau Cover with the tailgate open to check whether or not the Tonneau Cover interior light is functioning correctly. Ensure that the light turns **on** when the Tonneau is open and turns **off** when the Tonneau is closed. If the light **DOES NOT** work, check adjustment of the gas strut switch. **See Dia #30.**

REMOVAL OF TONNEAU COVER

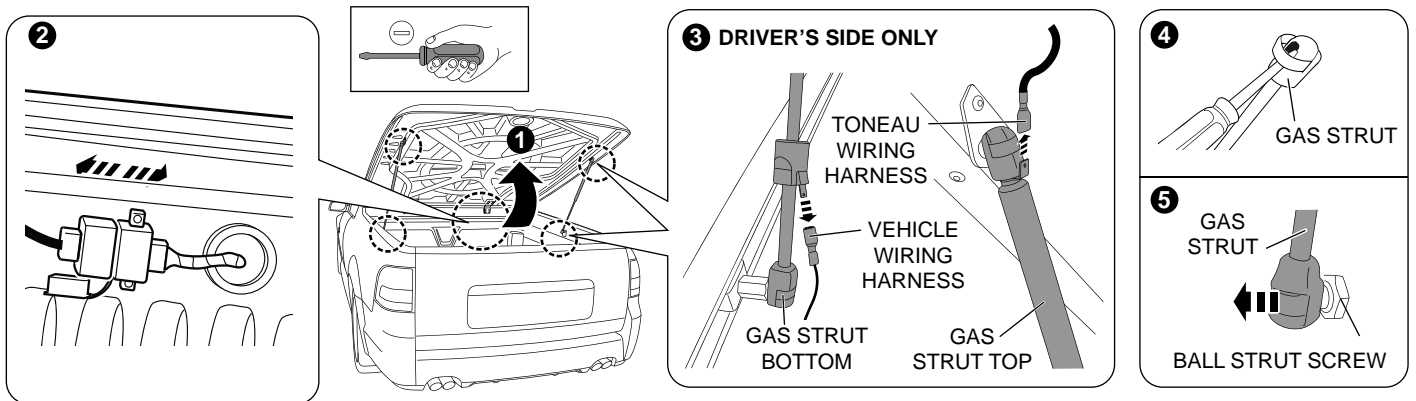
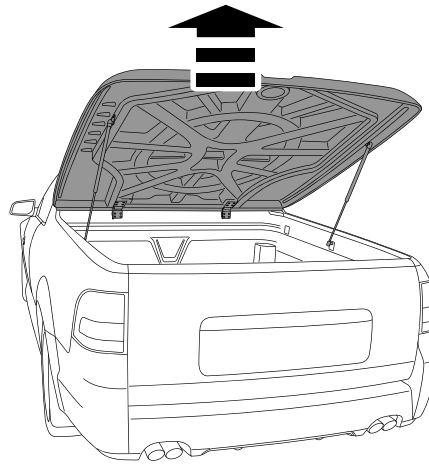


Diagram #1

1. Open Tonneau Cover, pull the 4-way connectors out from behind the bedliner and disconnect them. Disconnect the wiring harness from the terminals on the driver's side gas strut. Detach gas struts by inserting a small screw driver and adjusting the spring clip on the strut as shown. **See Dia #1. NOTE: Do not remove the spring clip. Only a small amount of levering is required to detach.**

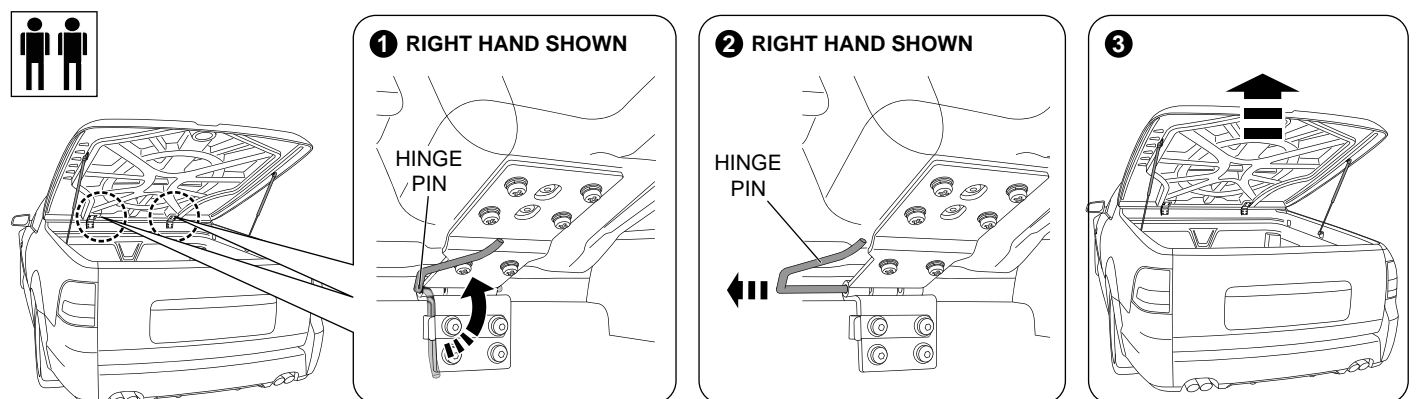
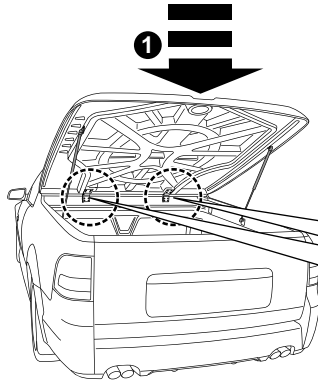
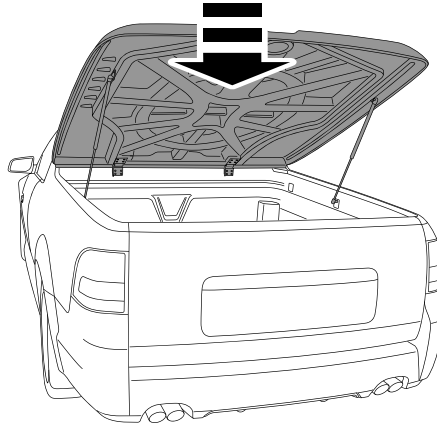


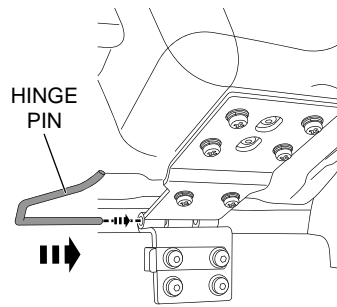
Diagram #2

2. Remove hinge pins and remove the Tonneau Cover as shown. **See Dia #2.**

REPLACEMENT OF TONNEAU COVER



2 RIGHT HAND SHOWN



3 RIGHT HAND SHOWN

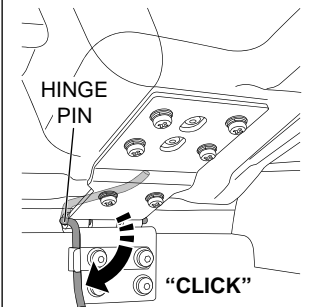
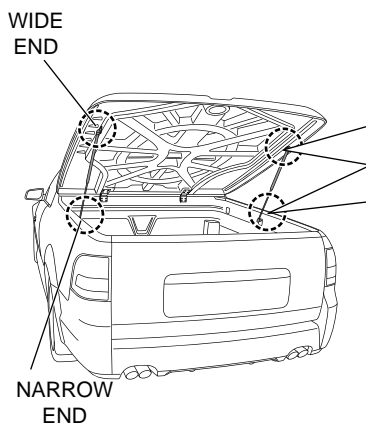


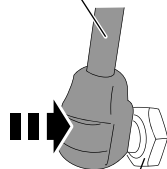
Diagram #1

1. Fit Tonneau Cover and secure hinges with hinge pins as shown. **See Dia #1.**



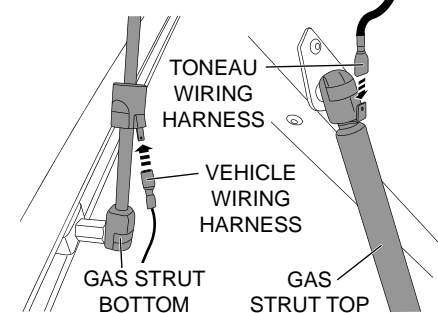
1

GAS STRUT



BALL STRUT SCREW

2 DRIVER'S SIDE ONLY



3

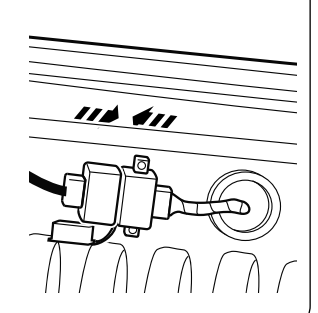


Diagram #2

2. Attach gas struts by clipping into place. **ENSURE THE NARROW END OF THE GAS STRUT MOUNTS TO THE VEHICLE.** Connect the wiring harness to the terminals on the driver's side gas strut as shown. Join the two 4-way connectors located at the front of the tub and push them behind the bedliner. **See Dia #2. (NOTE: Refer to Diagram #32): Ensure the gas strut switch works correctly and adjust if necessary.**