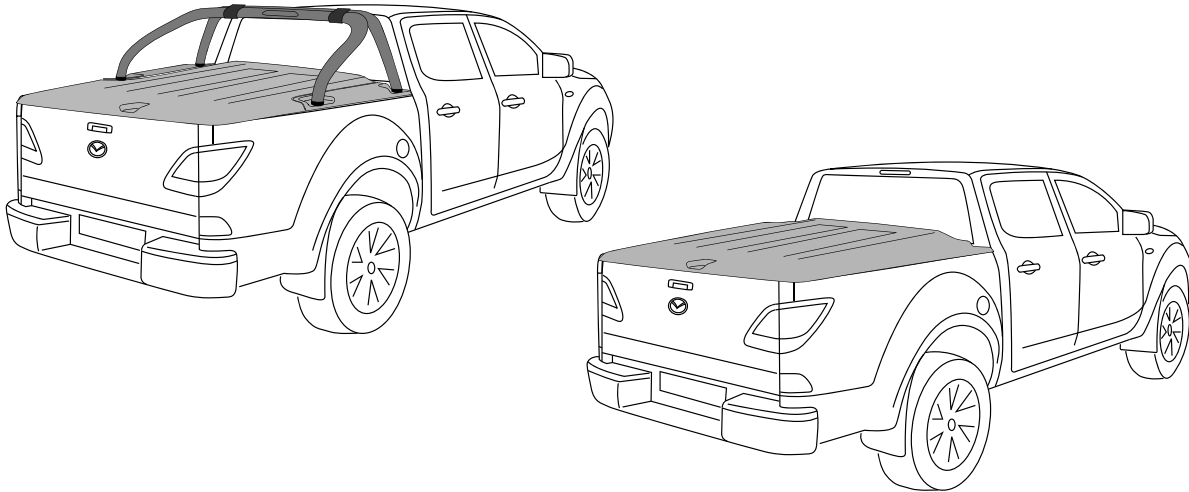


**MAZDA BT-50**  
(October 2011 Production Onwards)  
**1 & 3 PIECE HARD TONNEAU**  
**REMOTE LOCKING KIT**  
**INSTALLATION INSTRUCTIONS**



Installation Time: Approx. 90 Minutes

**Care Instructions:**

Clean Tonneau Cover with a mild detergent and water solution.



Do not use abrasive cleaners or solvents.



**Place these instructions in vehicle's glove box after installation is complete**

**TONNEAU COVER - IMPORTANT:**

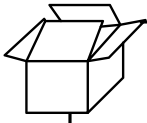
- Read instructions carefully before installation. It is strongly recommended that installation is conducted by an authorized Mazda dealer.
- This product must be installed exactly as specified in these instructions. Failure to do so may result in improper fit and/or retention.
- Recommend installation by 2 people.
- Fitting Instructions must be given to the end customer to understand correct removal and replacement process onto the vehicle.
- Do Not cycle remote key fob continuously or the actuator for operation of the remote locking system will burn out.

**MAINTENANCE:**

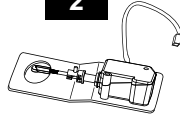
The gas struts are self lubricating and should only be cleaned occasionally with a damp cloth. Premature seal failure will result if solvents or lubricants are used to clean struts. Gas struts must be connected with the cylinder end to the Tonneau Cover or Warranty is Void. The locking mechanisms and latches only require occasional lubrication with Graphite Powder. DO NOT use any other lubricants or oils. Using alternative products will VOID Warranty. All installation hardware and fasteners must be checked every so often for tightness.

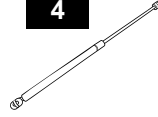
**TOOLS REQUIRED:**

- |                    |                             |
|--------------------|-----------------------------|
| • Torque Wrench    | • Phillips Head Screwdriver |
| • Sockets & Driver | • Flat Blade Screwdriver    |
| • Spanners         | • Draw Wire                 |
| • Side Cutters     | • Wire Hook                 |

**PARTS CHECK SHEET**

**PARTS IN MAIN CARTON**
**1**

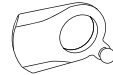
 Double Sided  
Foam Tape Gasket  
(TAPE0614)  
Qty - 1

**2**

 Actuator  
(LOCK0032-1)  
Qty - 1

**4**

 Gas Strut  
with Switch  
(STRT0016)  
Qty - 1

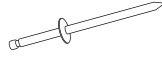
**5**

 Phillips Head  
Screw  
(SCRW0648-2)  
Qty - 1

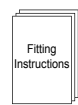
**6**

 Lock Cam with  
Ball Stud  
(CLIP2419-3)  
Qty - 1

**7**

 Spacer  
(FAST0466)  
Qty - 1

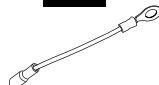
**8**

 Pop Rivet  
(FAST0505)  
Qty - 1

 Vehicle  
Wiring Kit  
(LOOM0048)  
Qty - 1

 Tonneau  
Wiring Kit  
(LOOM0002B)  
Qty - 1

 Fitting  
Instruction  
(FIT-TC0366)  
Qty - 1

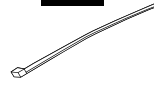
**PARTS IN VEHICLE WIRING KIT - (LOOM0048)**
**9**

 Vehicle Wiring  
Harness  
Qty - 1

**10**

 Gas Strut  
Earth Wire  
Qty - 1

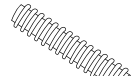
**11**

 Male Terminal  
Housing  
Qty - 1

**12**

 Cable Tie  
Qty - 10

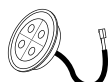
**13**

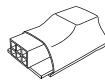
 T-Connector  
Loom  
Qty - 1

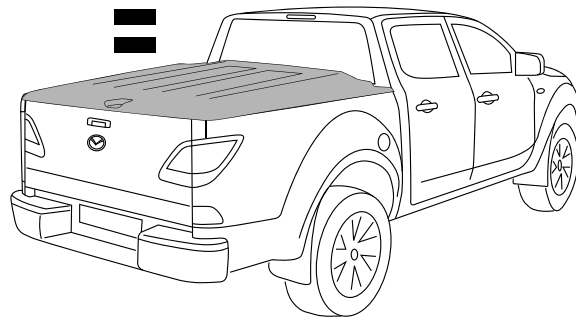
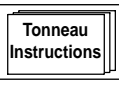
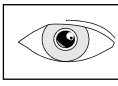
**14**

 Convuluted  
Tube  
Qty - 1

**PARTS IN TONNEAU WIRING KIT - (LOOM0002B)**
**15**

 Tonneau Wiring  
Harness  
Qty - 1

**16**

 Interior Light  
Qty - 1

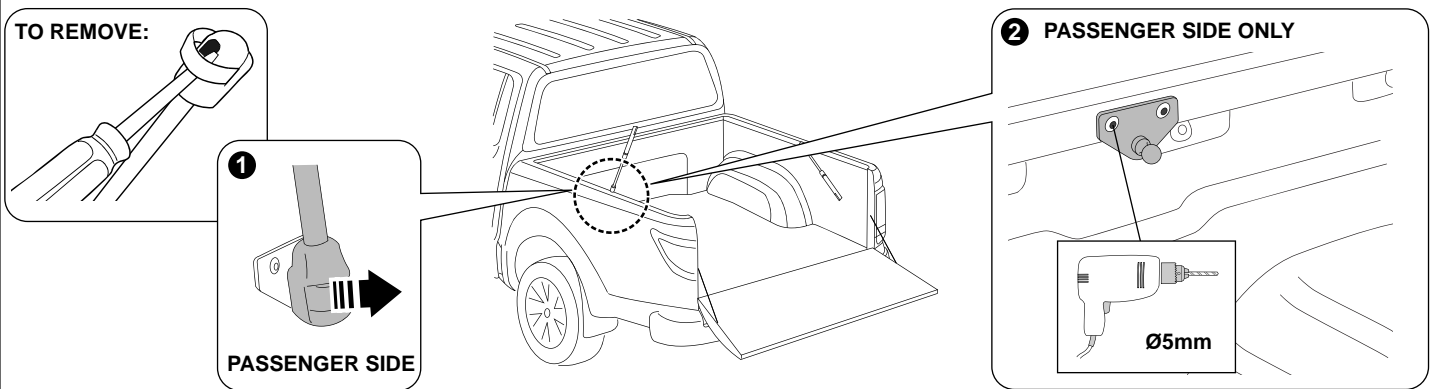
**17**

 Module  
Qty - 1



**Diagram #:1**

**1. NOTE: Two people are required to complete installation.**

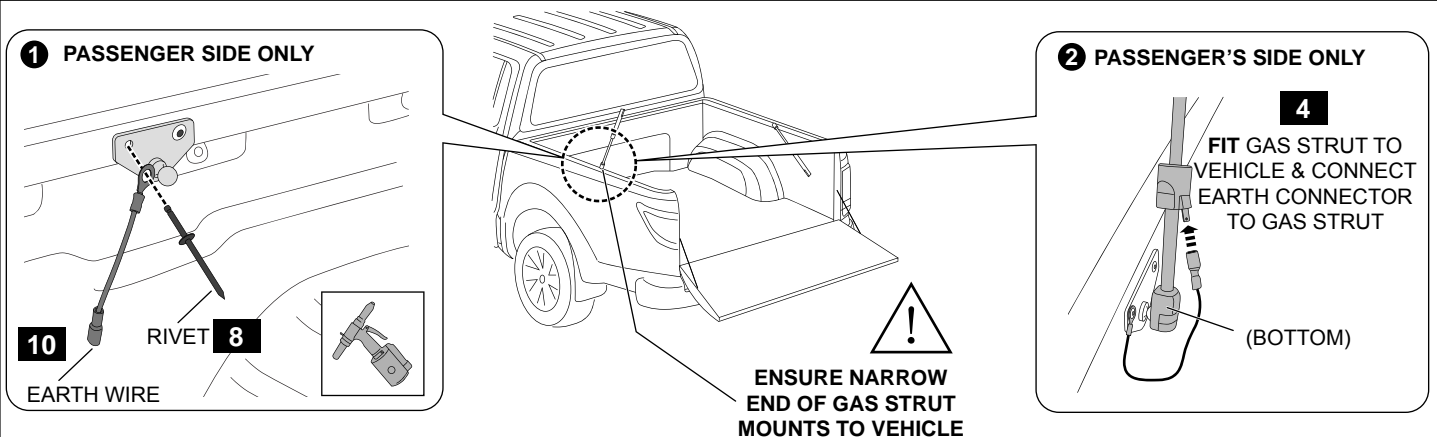
Refer to the tonneau installation instructions, to remove the tonneau cover. **Do Not remove Gas Struts from the vehicle.** Lay the tonneau cover upside down on a sheet or mat to prevent scratching. **See Dia #1.**



**Diagram #:2**

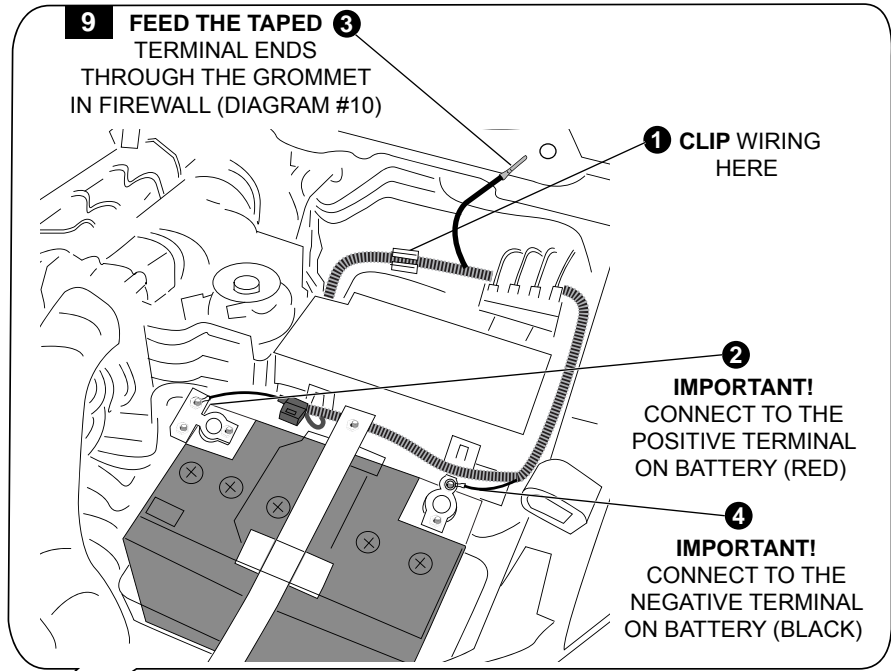
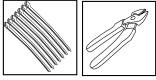
**2. FOR THE PASSENGER SIDE OF THE VEHICLE ONLY.** Remove and discard the gas strut.

Using a 5mm drill bit, drill out the rear rivet on the gas strut bracket as shown (Passenger side only). **See Dia #2.**



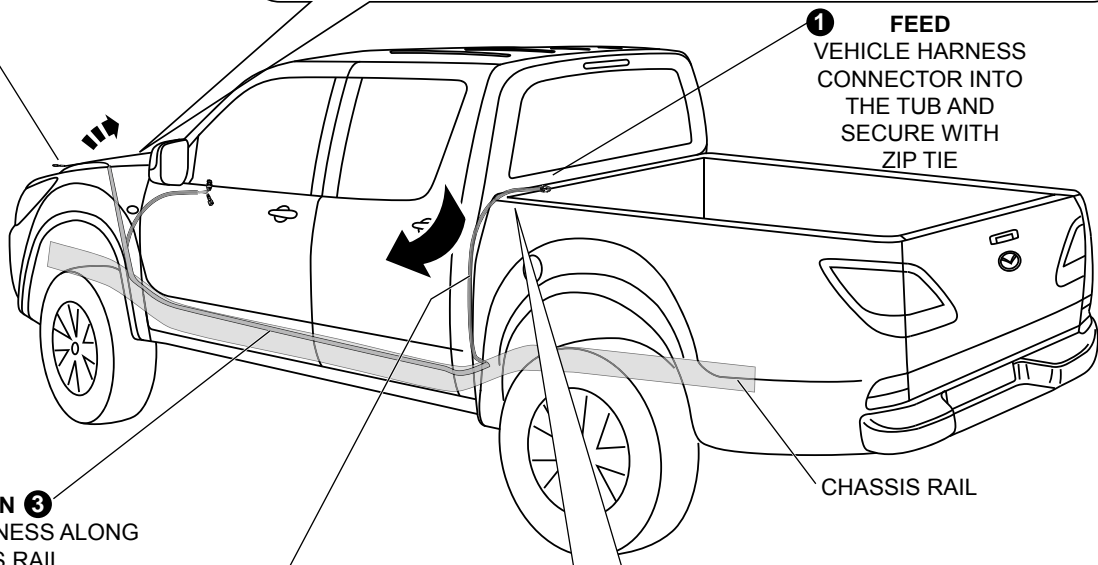
**Diagram #:3**

**3. Rivet the gas strut earth wire (Passenger side only) to the gas strut bracket as shown. Fit the new gas strut to the vehicle. Ensure the narrow end mounts to the vehicle. See Dia #3.**



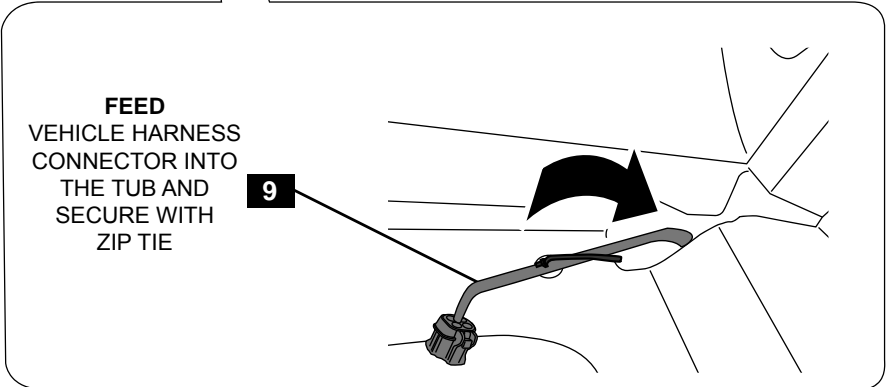
**OPEN & SECURE BONNET**  
PULL THE HARNESS INTO THE ENGINE BAY

**4**



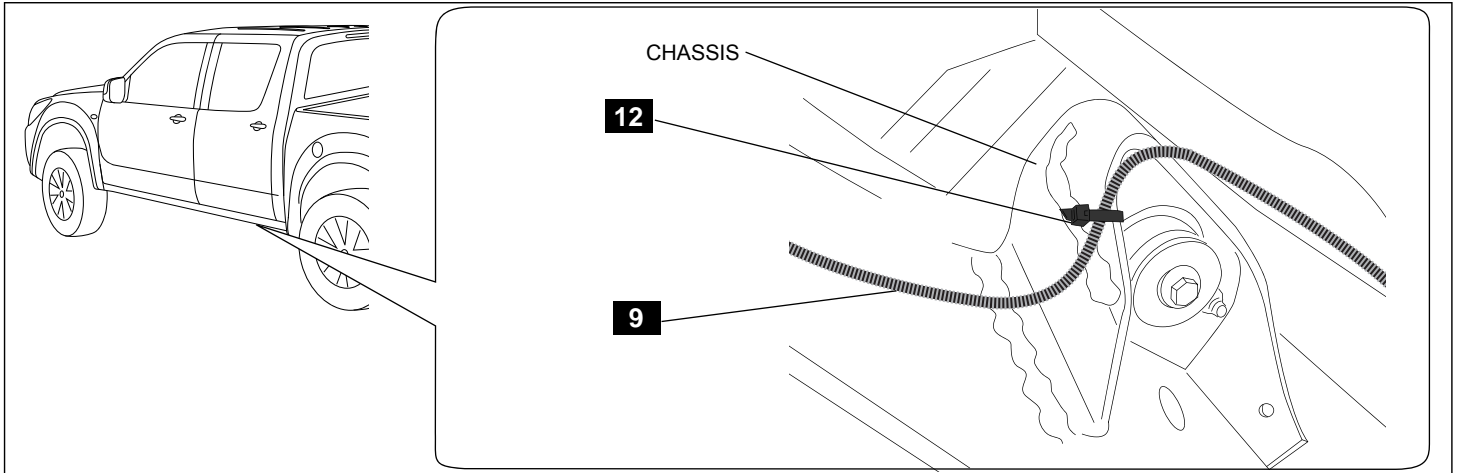
**RUN 3**  
VEHICLE HARNESS ALONG CHASSIS RAIL  
SECURE WITH CABLE TIES

**RUN 2**  
VEHICLE HARNESS DOWN BETWEEN CABIN & TUB TO THE CHASSIS RAIL

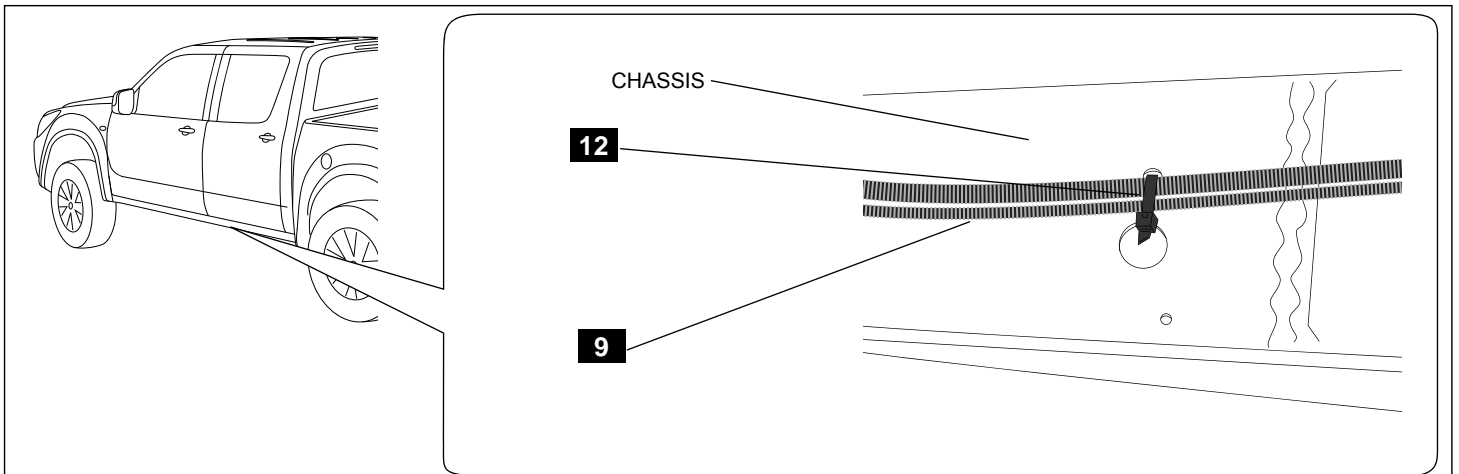


**Diagram #:4**

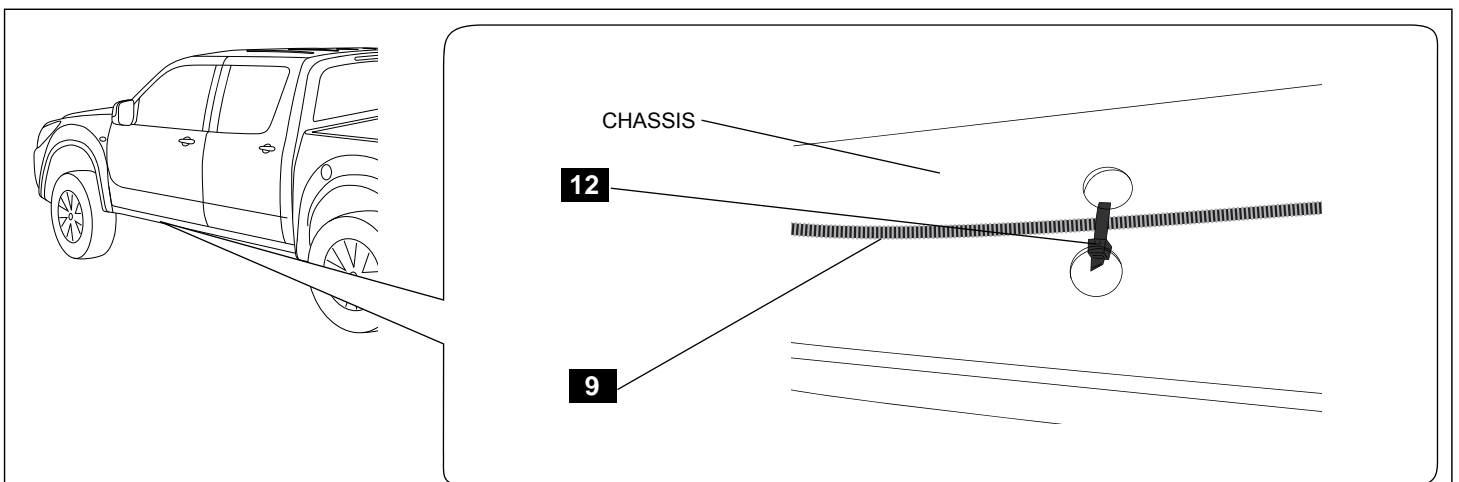
4. Feed the single vehicle harness connector into the tub through the opening in the front left hand corner of the tub as shown. Run the vehicle harness down between the cabin and the tub to the chassis rail. Run the harness to the front of the vehicle along the chassis rail, securing it with cable ties to the chassis rail as shown in diagrams 5-9. Feed the wiring loom along the chassis rail up the fire wall into the vehicle engine bay. Clip the corrugated harness into the white plastic clip on the fire wall and feed along the side fender and between the fuse box and the battery. Connect the loom into the positive terminal of the battery, as shown. The remaining end of the harness must be inserted into the cabin via rubber grommet located on the fire wall near the passenger foot well. **See Dia #4.**

**Diagram #:5**

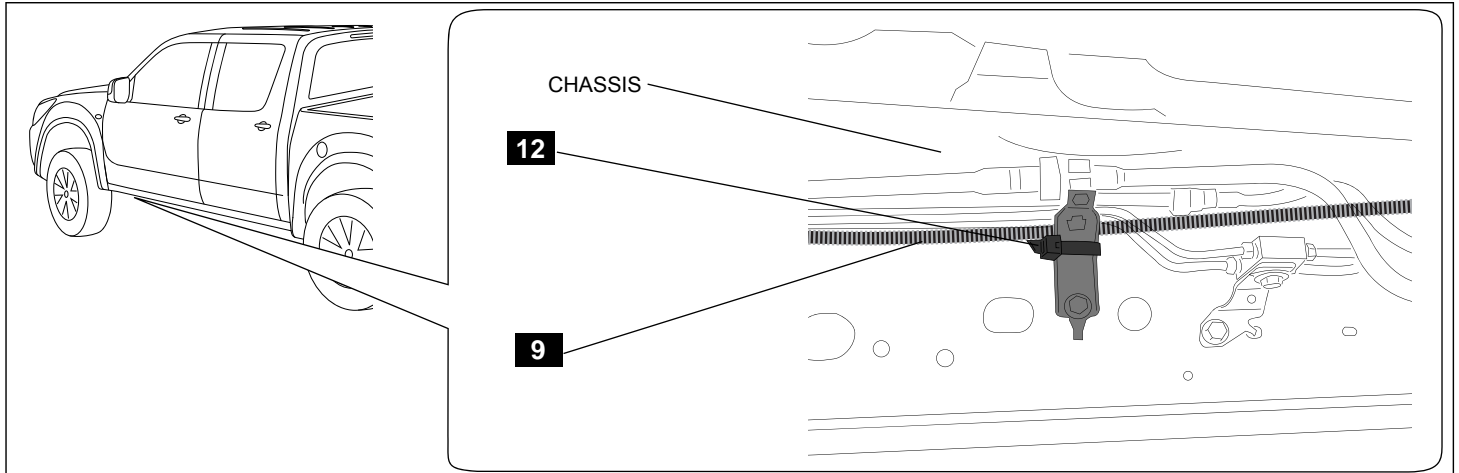
5. Attach the wiring to the chassis rail using hole in the tab mount, use cable tie. **See Dia #5.**

**Diagram #:6**

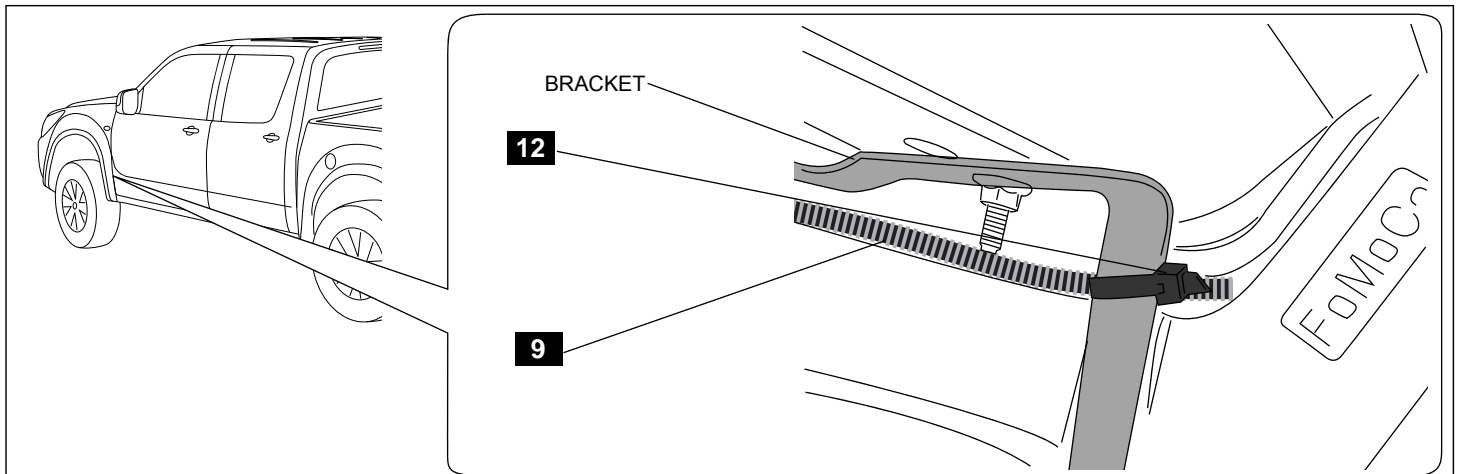
6. Attach the wiring to the chassis rail along with existing wiring using cable tie **See Dia #6.**

**Diagram #:7**

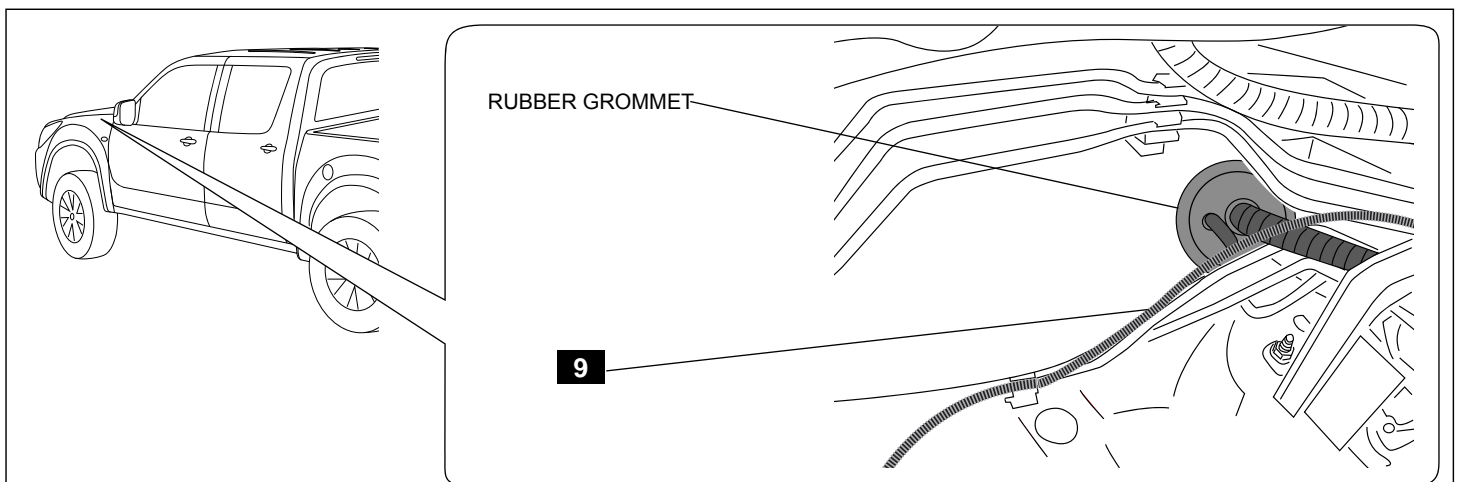
7. Attach the wiring to the chassis rail using cable tie **See Dia #7.**

**Diagram #:8**

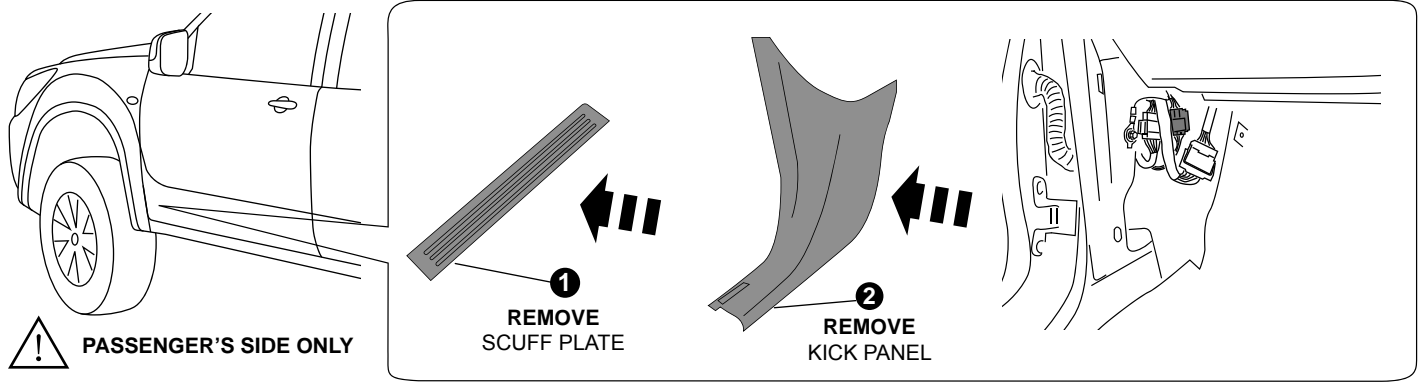
8. Attach the wiring to the bracket next to the brake lines along chassis rail using cable tie **See Dia #8**.

**Diagram #:9**

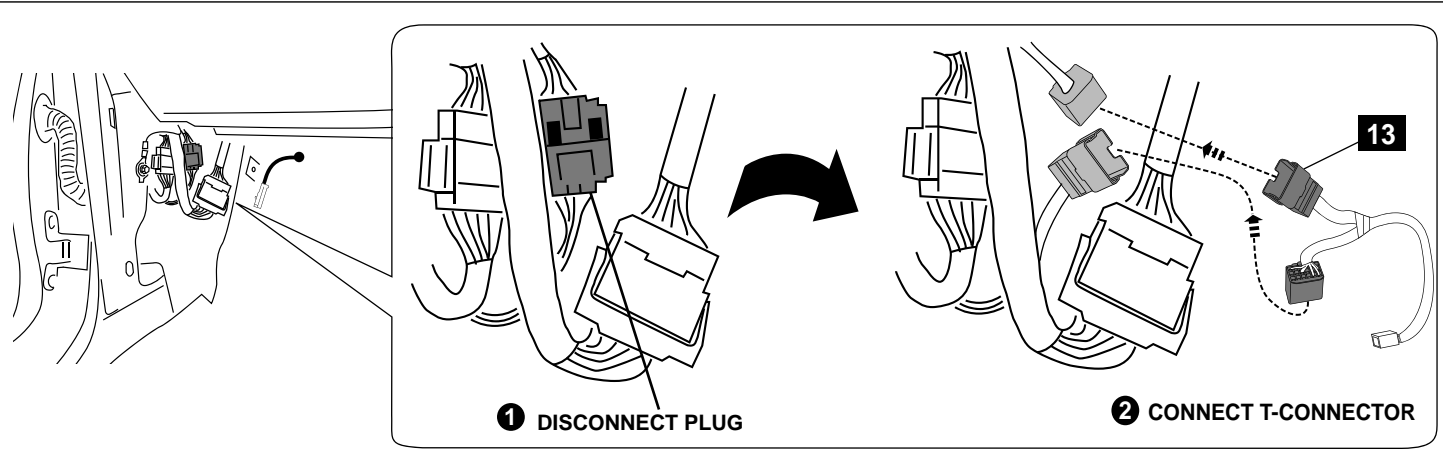
9. Attach the wiring to the L-shape bracket holding plastic ducting under the engine bay using cable tie **See Dia #9**.

**Diagram #:10**

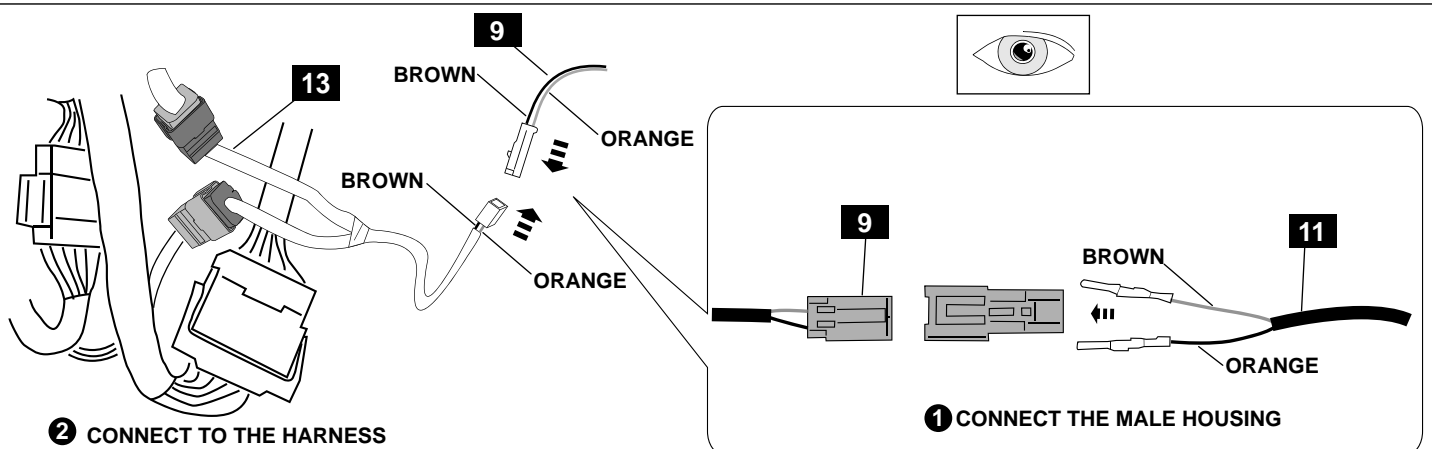
10. Pull the wiring into the engine bay and clip into the white plastic clip. Push the single wire through the rubber grommet in the fire wall. Tuck the wiring along the fender towards the battery as indicated in diagram #4. **See Dia #10**.

**Diagram #:11**

11. Remove the passenger's side scuff plate and kick panel. See Dia #11.

**Diagram #:12**

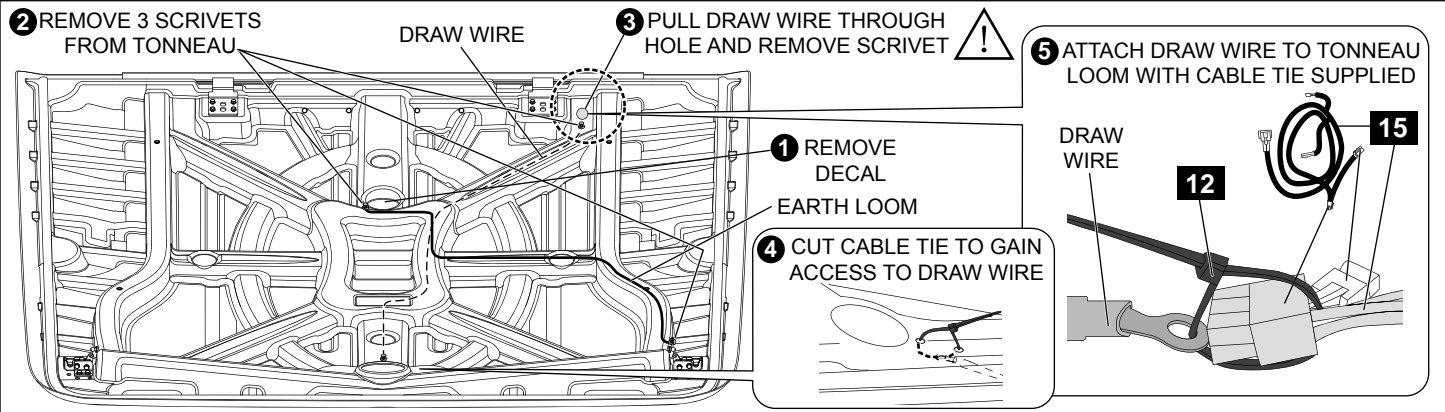
12. Locate and disconnect plug as shown in front kick panel area. Attach the T-connector wiring loom to the previously disconnected wiring plugs as shown. See Dia #12.

**Diagram #:13**

13. Pull the male connector through the hole in the fire wall. Insert the 2-way male terminal from the vehicle harness into the male terminal housing. Connect the vehicle harness terminal into the T-connector loom. Ensure cable colours match on both sides of the connector. See Dia #13.

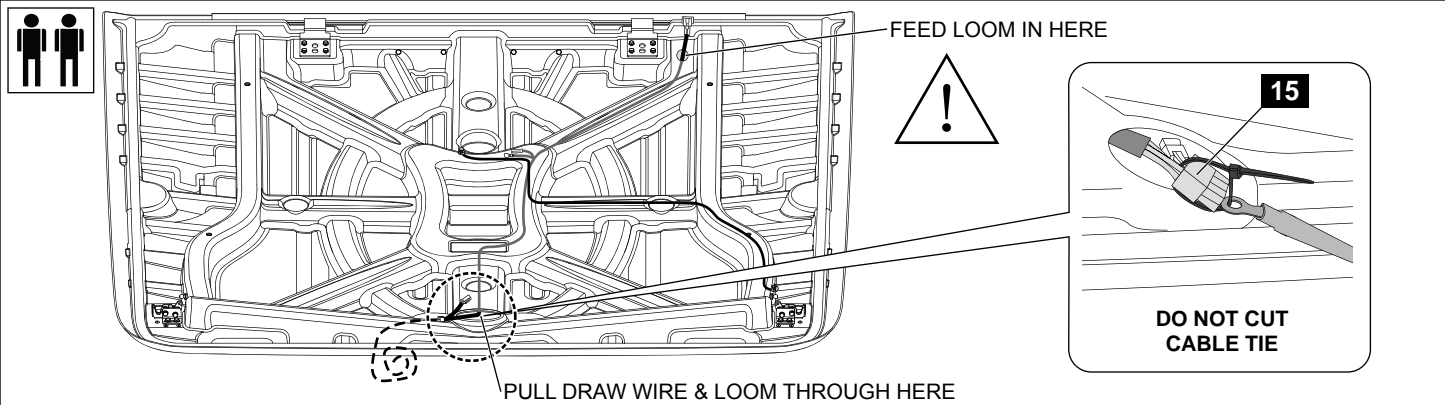


## MAZDA BT-50 - REMOTE LOCKING KIT FOR 1&3 PIECE HARD TONNEAU



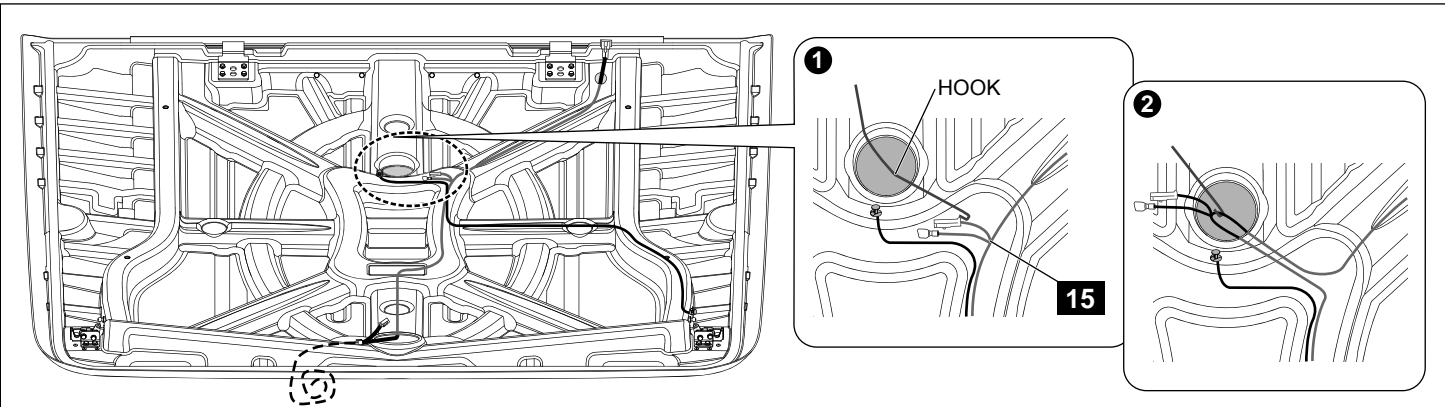
**Diagram #14**

14. Remove black decal located over hole as shown. Locate the (3) scrivets and remove from the tonneau. Do Not remove the scrivets from the earth loom or draw wire at this stage. Pull draw wire back through large hole near hinges and remove scrivet from this end of draw wire. Cut cable tie near the lock to gain access to the draw wire. Attach tonneau loom to this end of draw wire with a cable tie as shown, **Do Not pull cable tie tight. See Dia #14.**



**Diagram #15**

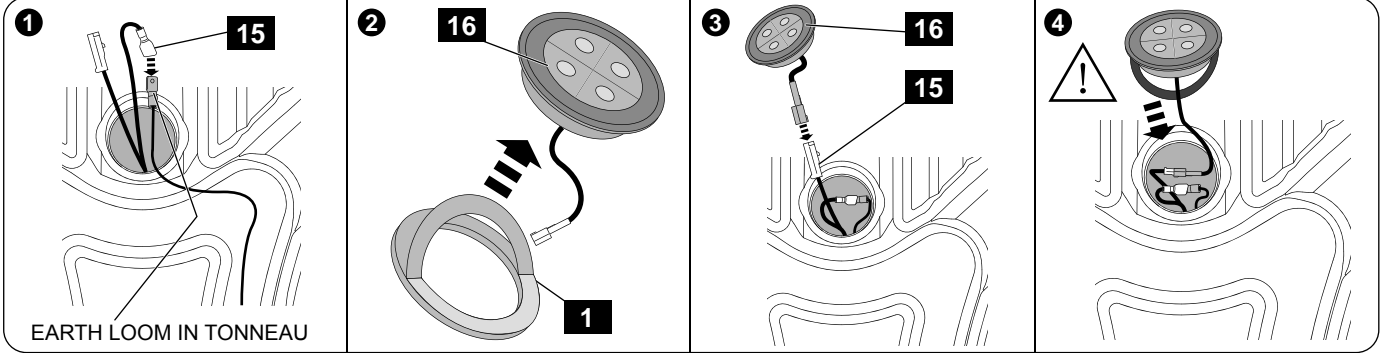
15. Pull draw wire through the lock cover hole. This requires one person to feed the loom and the other to pull the draw wire. **IMPORTANT: This is to be done carefully and slowly. Leave the draw wire attached to the tonneau loom. See Dia #15.**



**Diagram #16**

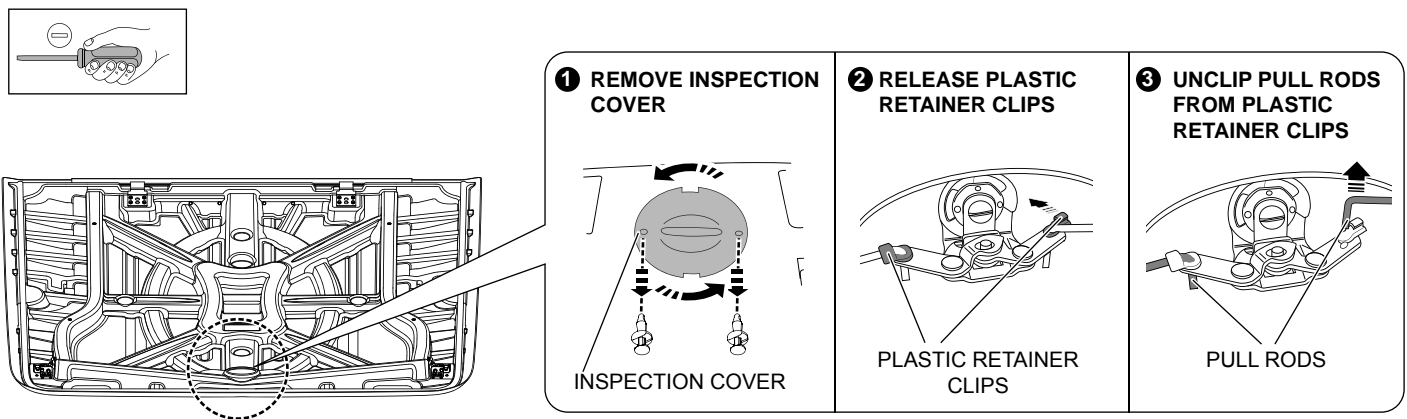
16. Using a hook locate the harness through the light hole & pull out light connector & earth terminal branches. You may need to re-pull the draw wire at the lock cover to access connectors. **See Dia #16.**





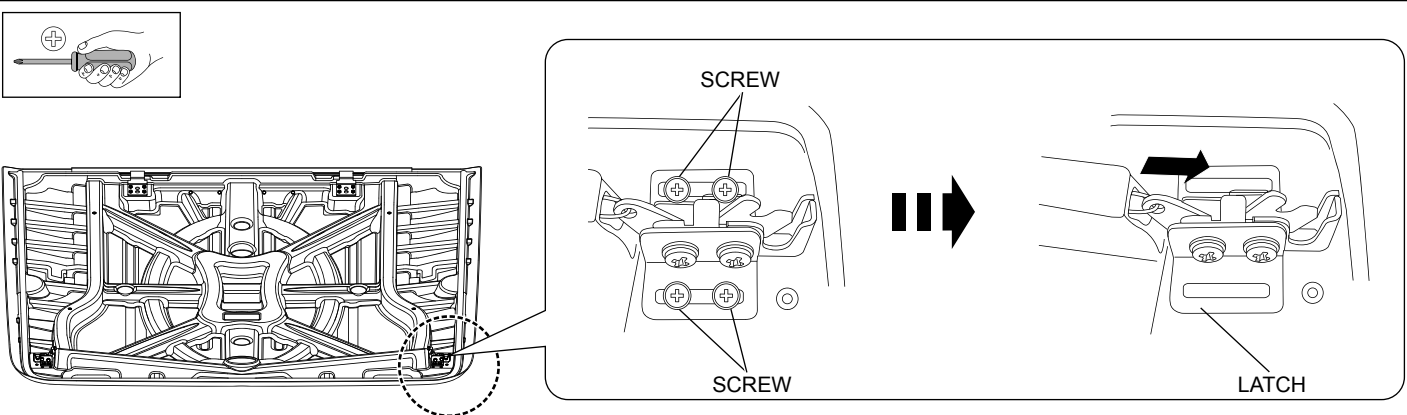
**Diagram #17**

17. Remove scrivet and pull earth loom through light hole. Connect earth terminal to terminal on tonneau loom. Remove tape liner from one side of double sided foam tape gasket and fit gasket to the interior light and apply pressure to ensure maximum adhesion. Connect the 2-way male connector from the tonneau wiring loom to the female connector of the interior light. Remove tape liner from double sided foam tape gasket and insert interior light into the tonneau cover and apply pressure to ensure maximum adhesion. **IMPORTANT: Ensure all wiring for the interior light and earth loom is contained inside the tonneau cover before installing the interior light. See Dia #17.**



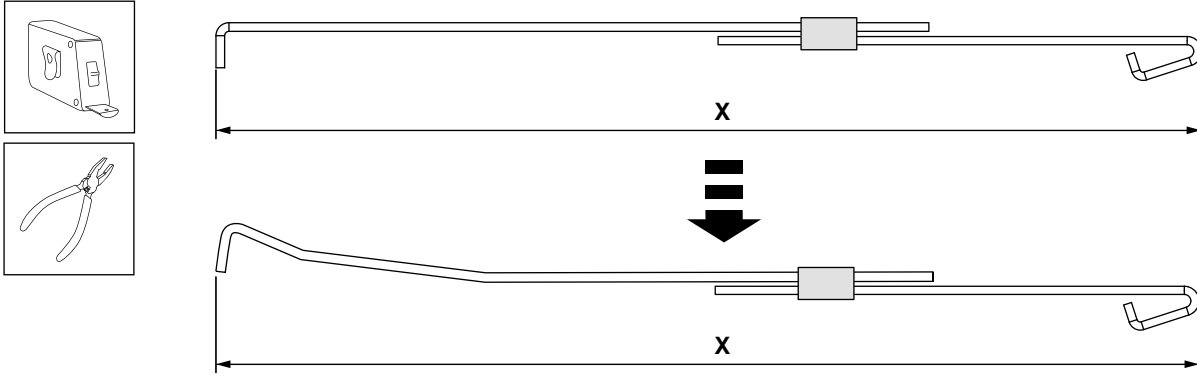
**Diagram #18**

18. Remove inspection cover by removing scrivets and rotating cover anti-clockwise. Release plastic retainer clips and unclip pullrods as shown. **See Dia #18.**



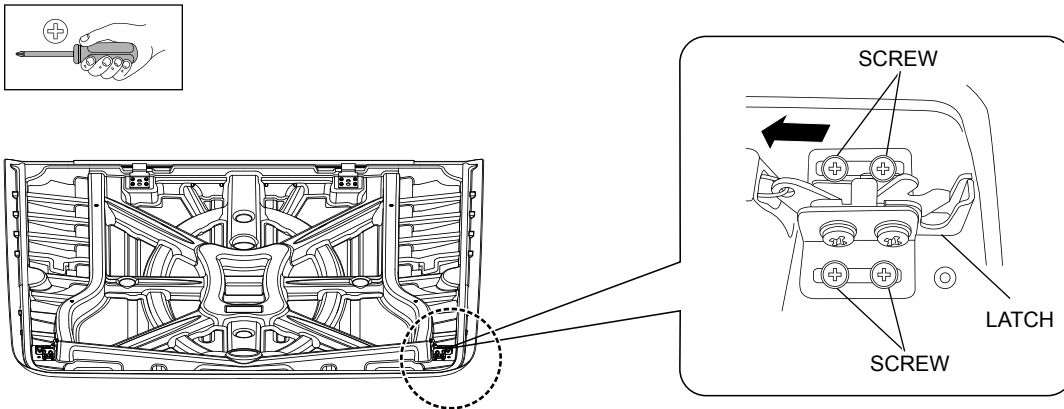
**Diagram #19**

19. **Note:** Mark the LHS latch position on the tonneau cover to use this location for the latch reinstall. Remove the 4 screws holding the LHS rotary latch. Remove the latch and pullrod assembly from the tonneau cover. **See Dia #19.**



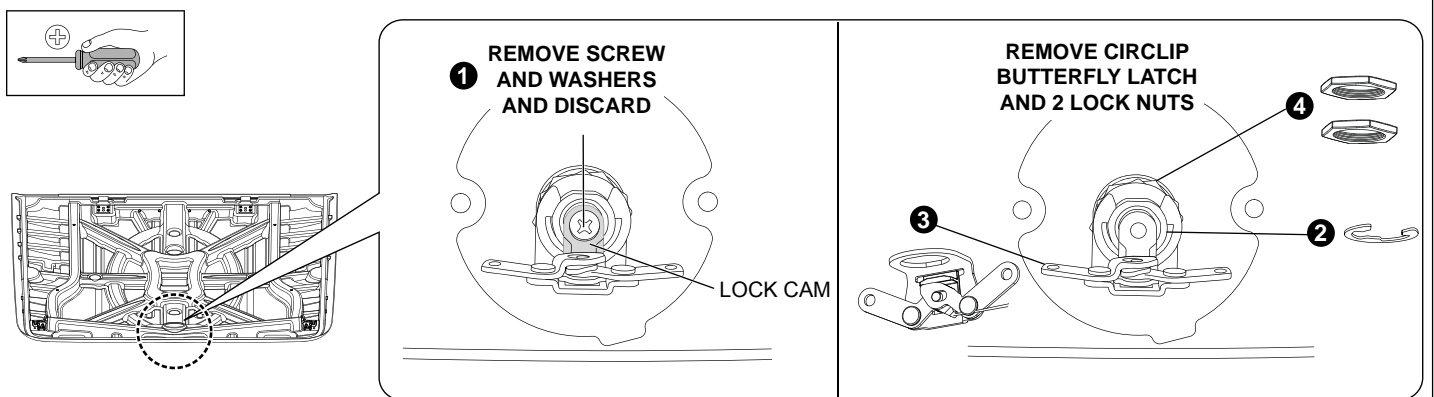
**Diagram #20**

20. **Note:** Measure and record the total length of the pullrod. Bend the pull rod to the new shape using the template provided on the page 15. Adjust the pullrod length to the previously measured length. **See Dia #20.**



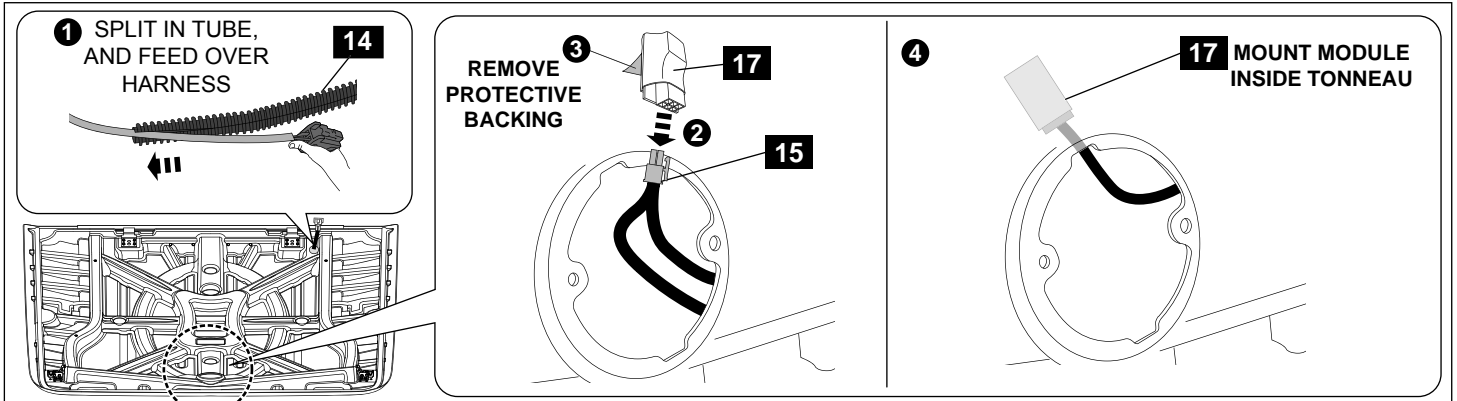
**Diagram #21**

21. Slide the pull rod assembly into the tonneau. Attach the latch to the tonneau using four screws. **See Dia #21.**



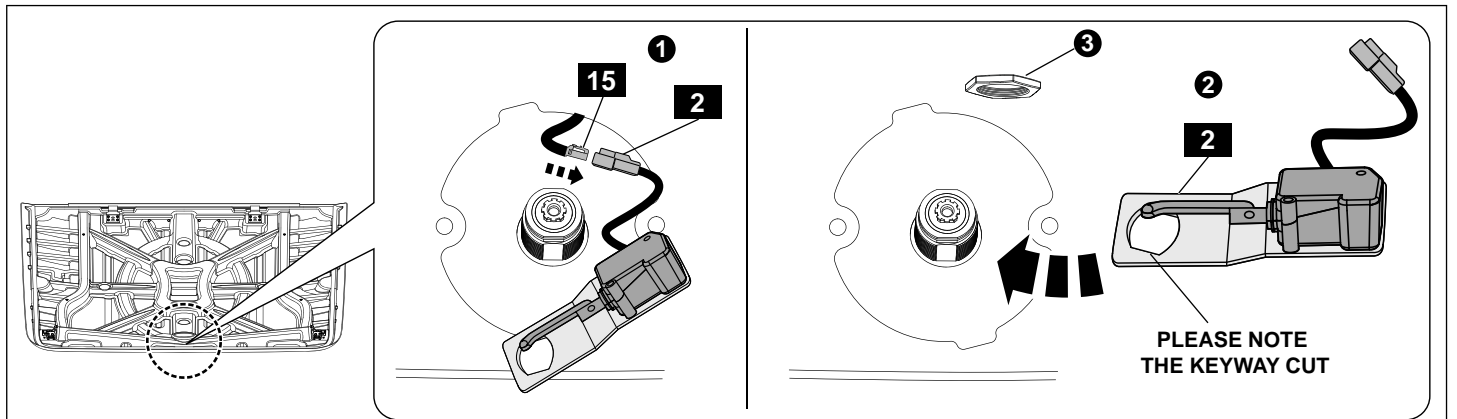
**Diagram #:22**

22. Remove and discard the screw and washers holding the lock cam in place as shown. Remove the circlip and remove the butterfly latch assembly. Unscrew the two lock nuts holding the lock barrel assembly.  
**Note:** Keep one large nut as you will need one for reassembly. **See Dia #22.**



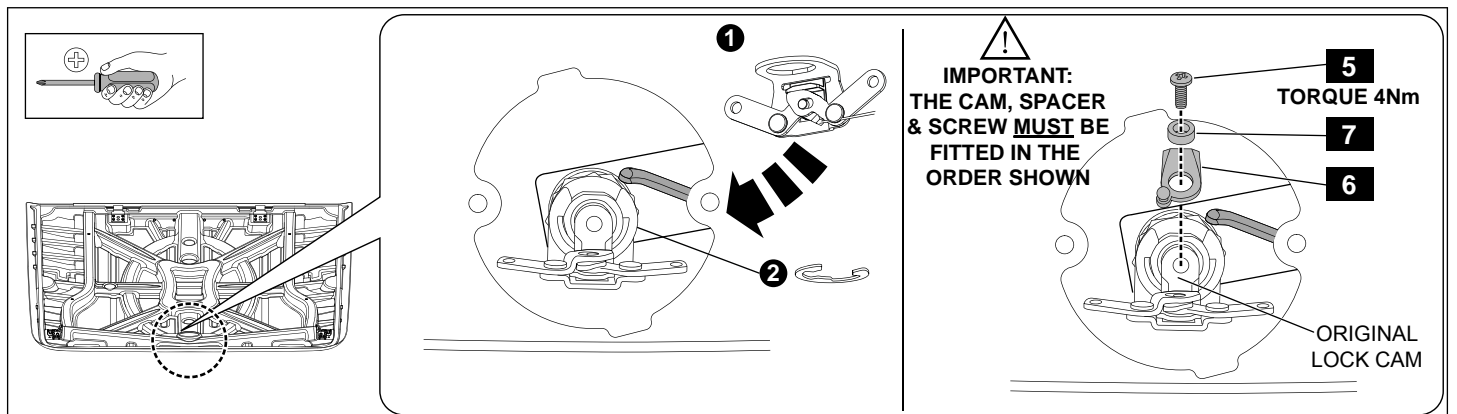
**Diagram #23**

23. Fit convoluted tube to tonneau harness that protrudes from the cover, by opening up the split in the tube and feeding it over the cable with grey foam insulation near the connector first. Connect the 6-way male connector on the tonneau wiring loom to the module. Remove the protective backing from the module and adhere it to the inside of the tonneau cover as shown. **See Dia #23.**



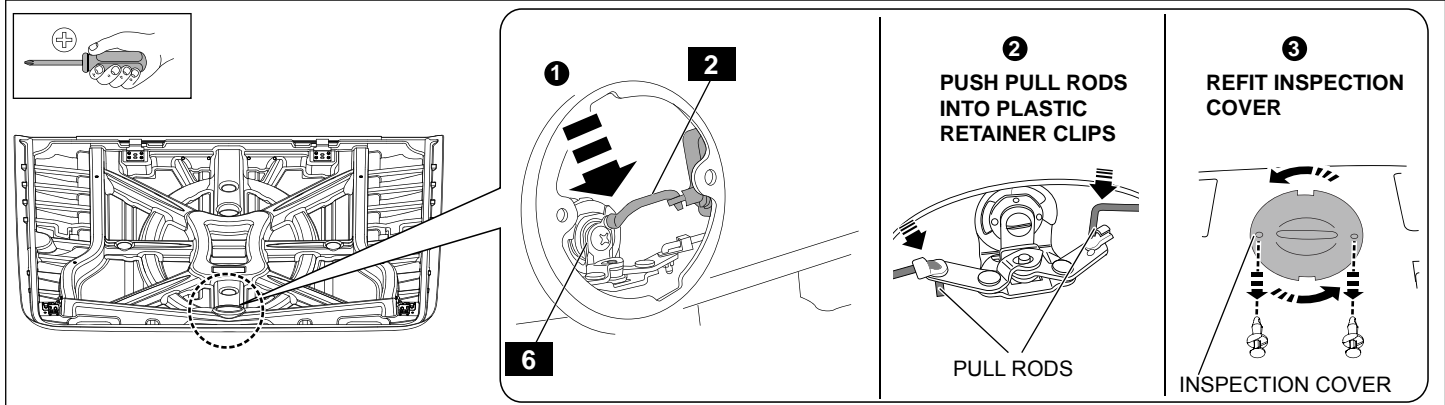
**Diagram #24**

24. Fit the remote bracket over the lock barrel assembly and secure with one lock nut. **Note: The remote lock bracket has a keyway cut into it on angle for the lock barrel. Ensure that the bracket sits at this angle in relation to the lock barrel. See Dia #24.**



**Diagram #25**

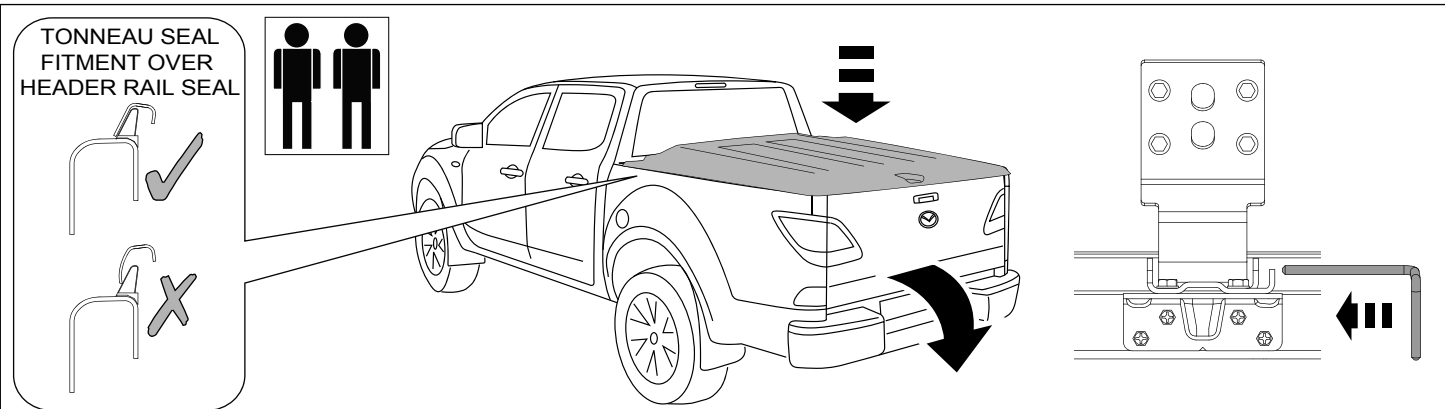
25. Refit the butterfly latch and secure with the circlip. Fit the ball stud lock cam and plastic spacer, to the locking mechanism and secure with the Phillips head screw provided. **Tighten to Torque 4Nm. IMPORTANT: Ensure both lock cams are aligned with each-other and with the locking mechanism as shown See Dia #25.**



**Diagram #:26**

26. Clip the pull rod from the actuator onto the lock cam ball stud as shown. Adjust pull rods so that they clip back into the retainer clips correctly. Do this by rotating them clockwise to shorten them or anti-clockwise to lengthen them (via internal turn buckle). Clip pullrods and retainer clips back into position. Test lock by pressing the button on top of Tonneau Cover. If latch mechanism **DOES NOT** release, return to **Step 2** and shorten the pullrods. If it **DOES** release, replace inspection cover.

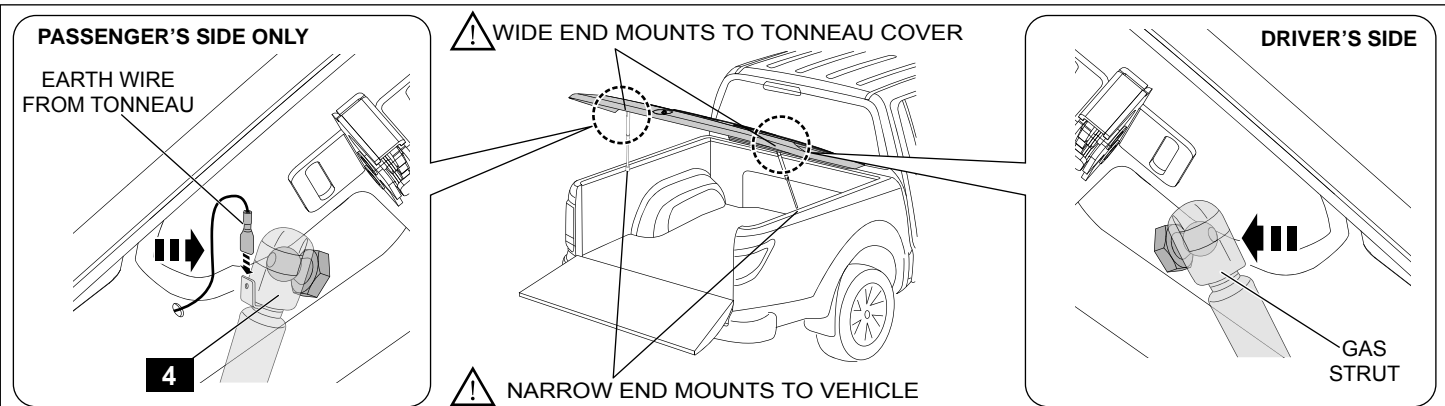
**NOTE:** Ensure the joining element and pullrod clip are attached to the actuator. If they are not, clip them into place as shown. Also ensure all wiring is moved out of the way and can not interfere with the locking mechanism. See Dia #26.



**Diagram #:27**

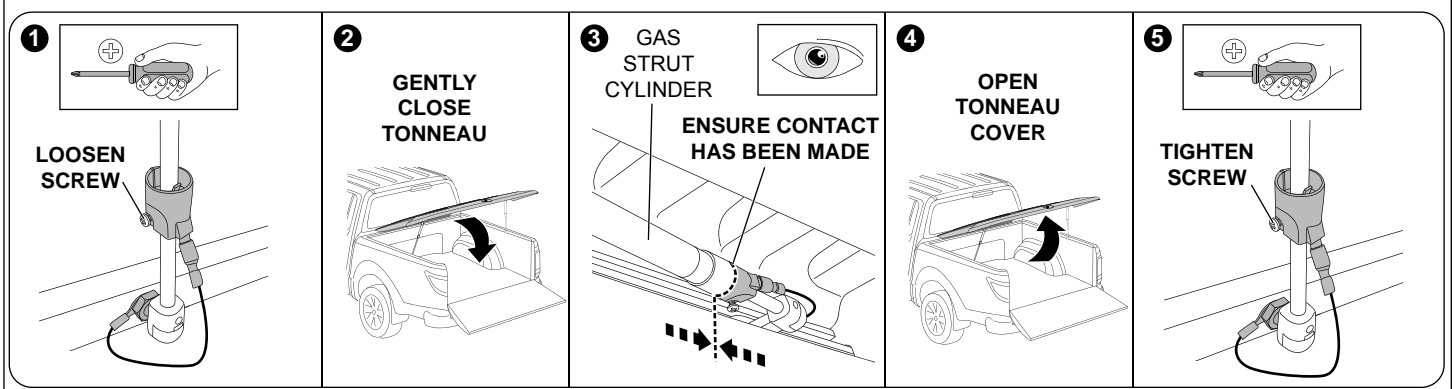
27. **Open vehicle's tailgate.** Two people are required to carry out the fitment of the tonneau cover. Carefully fit tonneau cover to vehicle ensuring seal at the front of the tonneau cover sits correctly over the header rail seal as shown. Secure hinges with hinge pins as shown. **See Dia #27.**

**IMPORTANT:** Ensure hinge pins clip into retaining leg on lower hinges.  
If misaligned, seal can be pushed forward from inside of the tub.



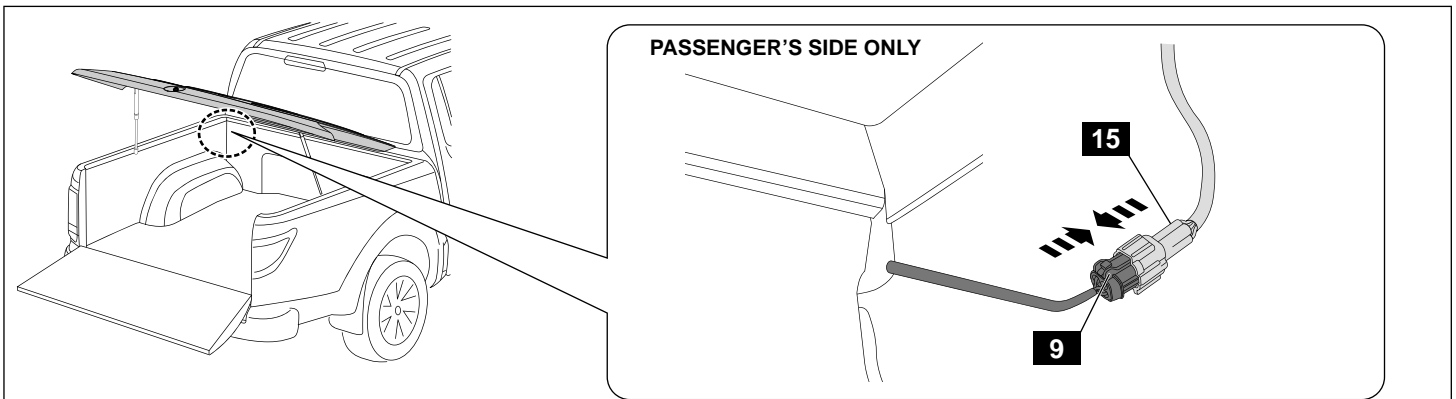
**Diagram #:28**

28. Attach gas struts (already attached to the vehicle) to the tonneau cover by clipping into place as shown. Ensure the earth wire on the passenger's side gets connected to the gas strut connector as shown. **Ensure the narrow end is mounted to the vehicle and the wide end mounts to the tonneau cover. See Dia #28.**  
**!! Failure to do so Voids Warranty on gas struts!!**



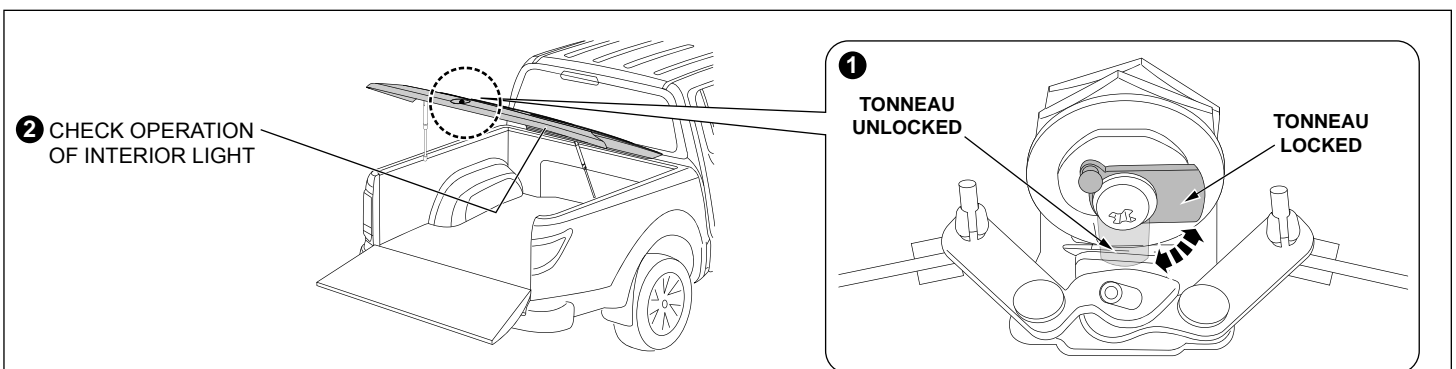
**Diagram #:**29

29. Loosen the screw found on the terminal housing on the passenger's side gas strut so it can move freely. Close the tonneau cover. Inspect the passenger's side gas strut and ensure the terminal housing is pushed against the gas strut's cylinder as shown. This is critical to ensure the light switches off when the tonneau cover is closed. Open the tonneau cover and tighten the screw. **See Dia #29.**



**Diagram #:**30

30. Connect the vehicle wiring loom to the tonneau wiring loom via the 8-way connectors located at the front of the tub as shown. **See Dia #30.**



**Diagram #:**31

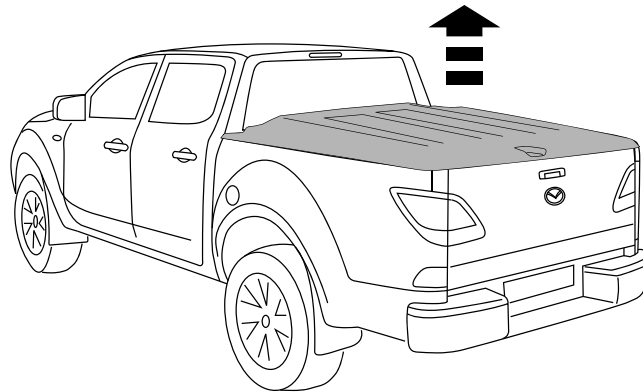
31. Manually lock & unlock tonneau using the tonneau key. The key supplied with the hard tonneau cover will over-ride the remote actuator of the lock. In standard conditions, ensure the lock barrel is rotated by the tonneau key to the locked position. The unlocking and locking of the cover will be controlled by pushing the vehicles unlock button on the key fob (that moves a secondary cam). Check operation of central unlocking mechanism by pressing lock and unlock on vehicle's key. Review operation through inspection hole. Test operation of lock mechanism by pressing tonneau's push button after you have pressed lock on vehicle's key, and then again after you have pressed unlock on vehicle's key. Finally, replace the inspection cover.

**NOTE: If the tonneau key is used to unlock the cover, ensure to relock the cover using the same key.**

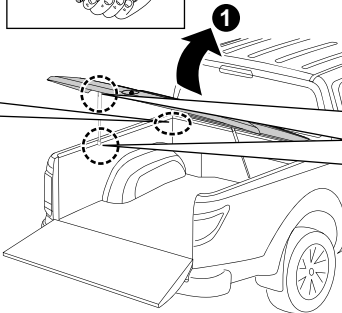
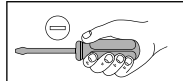
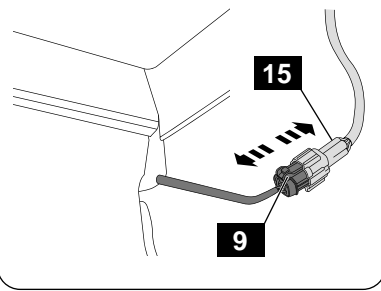
Open and close tonneau with tailgate open to check if interior light is functioning correctly. Ensure the light turns on when tonneau is open and turns off when tonneau is closed. If interior light does not work, check adjustment of gas strut switch (refer to figure 29). **See Dia #31.**

### REMOVAL OF TONNEAU COVER

TWO PEOPLE ARE REQUIRED TO CARRY OUT THE REMOVAL OF THE TONNEAU COVER.



#### 2 PASSENGER'S SIDE ONLY



#### 3 PASSENGER'S SIDE ONLY

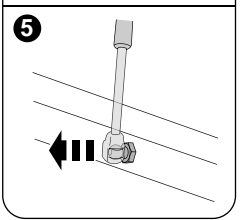
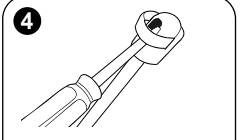
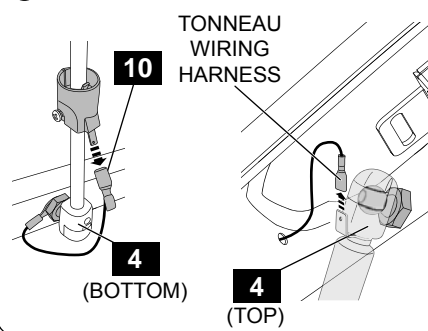


Diagram #:1

1. Open tonneau cover, disconnect 4-way connectors at the front of the tub. Disconnect the two (2) spade terminals on the passenger side gas strut as shown. Detach gas struts by inserting a small screw driver and adjusting the spring clip on the strut as shown. **NOTE: Do Not remove the spring clip only a small amount of levering is required to detach. See Dia #1.**

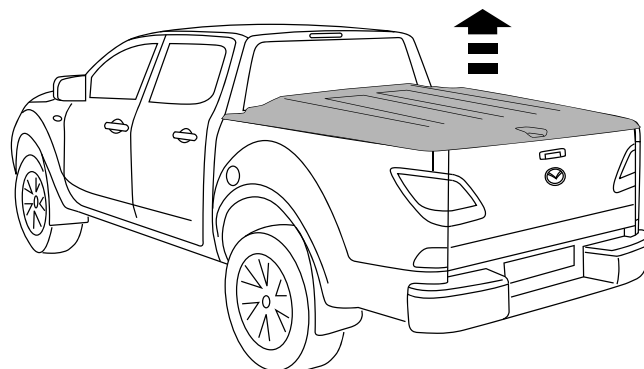
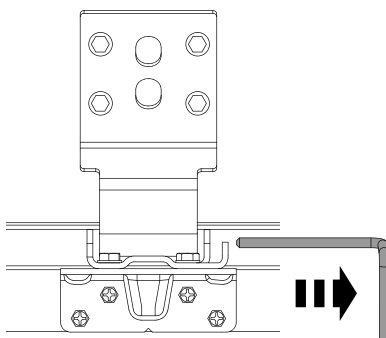


Diagram #:2

2. Remove hinge pins and then remove the Tonneau Cover. See Dia #2.



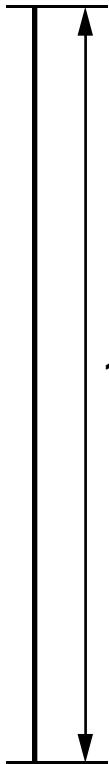
**TO REPLACE THE TONNEAU COVER:**  
Reverse the sequence and the procedures of the two (2) Figures above.





**BEND THE PULLROD  
USING THIS TEMPLATE**

**SCALE 1:1**



**100MM**

