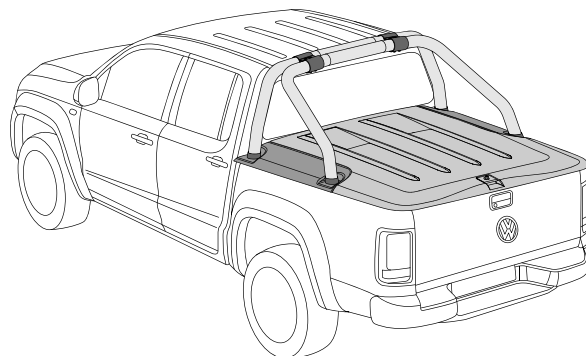
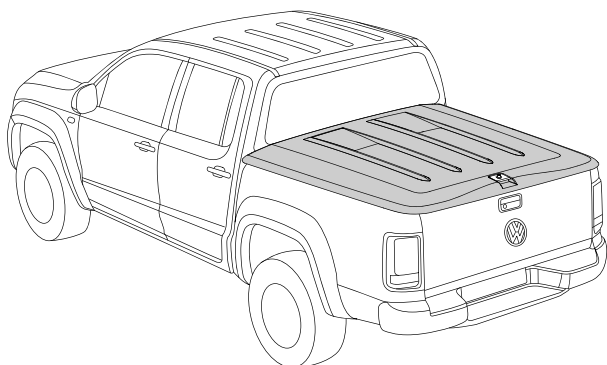


VOLKSWAGEN AMAROK MY17> 1 & 3 PIECE HARD TONNEAU REMOTE LOCKING KIT INSTALLATION INSTRUCTIONS

**Care Instructions:**

Clean Tonneau Cover with a mild detergent and water solution.



Do not use abrasive cleaners or solvents.



Place these instructions in vehicle's glove box after installation is complete

TONNEAU COVER - IMPORTANT:

- Read instructions carefully before installation. It is strongly recommended that installation is conducted by an authorized Volkswagen dealer.
- This product must be installed exactly as specified in these instructions. Failure to do so may result in improper fit and/or retention.
- Recommend installation by 2 people.
- Fitting Instructions must be given to the end customer to understand correct removal and replacement process onto the vehicle.
- Do Not cycle remote key fob continuously or the actuator for operation of the remote locking system will burn out.

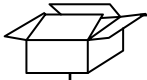
MAINTENANCE:

The gas struts are self lubricating and should only be cleaned occasionally with a damp cloth. Premature seal failure will result if solvents or lubricants are used to clean struts. Gas struts must be connected with the cylinder end to the Tonneau Cover or Warranty is Void. The locking mechanisms and latches only require occasional lubrication with Graphite Powder. DO NOT use any other lubricants or oils. Using alternative products will VOID Warranty. All installation hardware and fasteners must be checked every so often for tightness.

TOOLS REQUIRED:

- Torque Wrench
- Sockets & Driver
- Spanners
- Side Cutters
- Phillips Head Screwdriver
- Flat Blade Screwdriver
- Draw Wire
- Wire Hook

PARTS CHECK SHEET



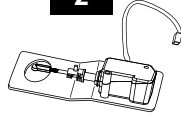
PARTS IN MAIN CARTON

1



Double Sided
Foam Tape Gasket
(TAPE0614)
Qty - 1

2



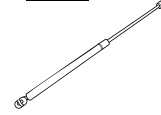
Actuator
(LOCK0032-1)
Qty - 1

3



Spacer
(FAST0466)
Qty - 1

4



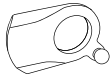
Gas Strut
with Switch
(STRT0016)
Qty - 1

5



Phillips Head
Screw
(SCRW0648-2)
Qty - 1

6



Lock Cam with
Ball Stud
(CLIP2419-3)
Qty - 1

7



IMPORTANT
LOCK MUST BE KEY LOCKED
FOR THE ACTUATOR TO FUNCTION

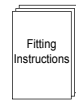
Lock Warning
Label
(LABL5098)
Qty - 1



Vehicle
Wiring Kit
(LOOM0118)
Qty - 1



Tonneau
Wiring Kit
(LOOM0002B)
Qty - 1



Fitting
Instruction
(FIT-TC0377)
Qty - 1



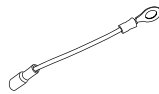
PARTS IN VEHICLE WIRING KIT - (LOOM0118)

8



Vehicle Wiring
Harness
Qty - 1

9



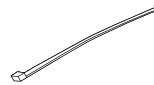
Gas Strut
Earth Wire
Qty - 1

10



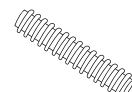
External Star
Washer
Qty - 1

11



Cable Tie
Qty - 12

12



Convoluted
Tube
Qty - 1



PARTS IN TONNEAU WIRING KIT - (LOOM0002B)

13



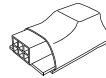
Tonneau Wiring
Harness
Qty - 1

14

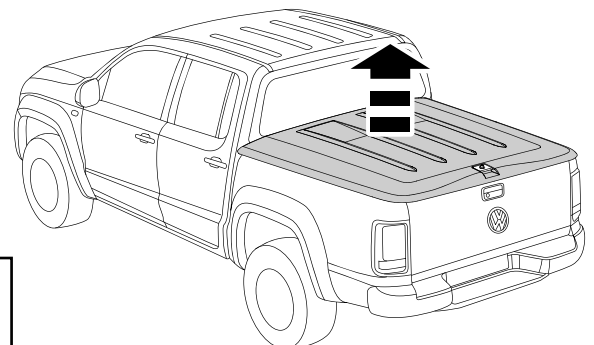
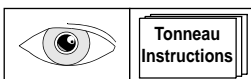


Interior Light
Qty - 1

15



Module
Qty - 1



NOTE: Two people are required to complete installation.
Refer to the tonneau installation instructions, to remove the tonneau cover.
Lay the tonneau cover upside down on a sheet or mat to prevent scratching.

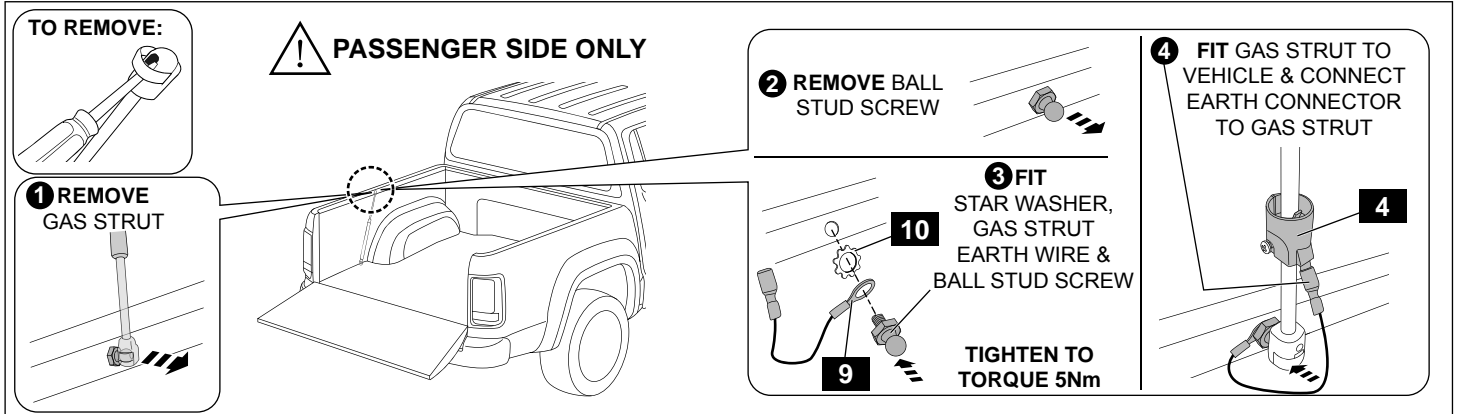


Diagram #:2

2. FOR THE PASSENGER SIDE OF THE VEHICLE ONLY. Remove and discard the gas strut. Remove and retain the ball stud screw. Fit the gas strut earth wire and star washer (in order as shown) to the ball stud screw and fit to the vehicle as shown. **Tighten to Torque 5Nm.** Attach the gas strut from the kit to the vehicle and secure earth wire as shown. **ENSURE THE NARROW END MOUNTS TO THE VEHICLE. See Dia #2.**

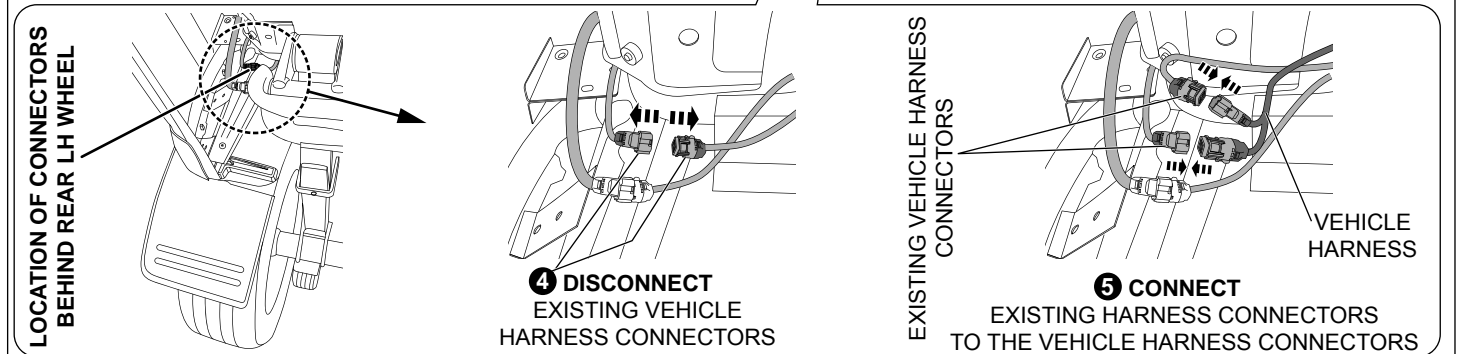
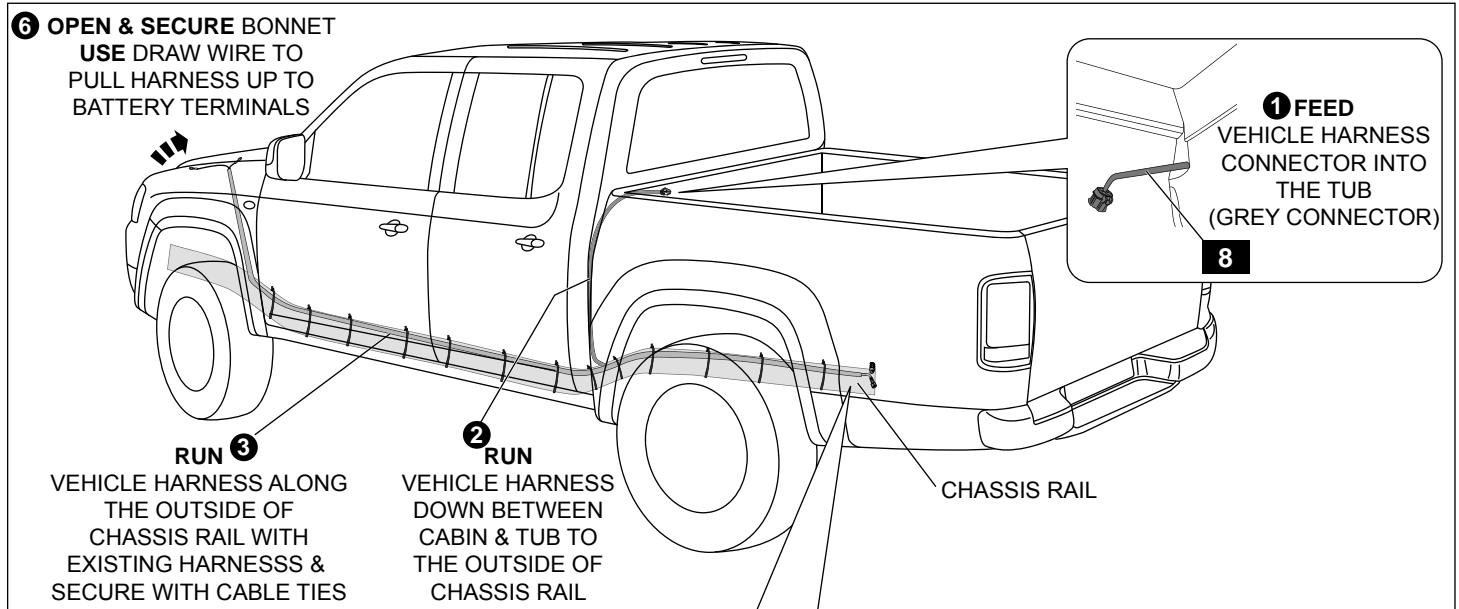


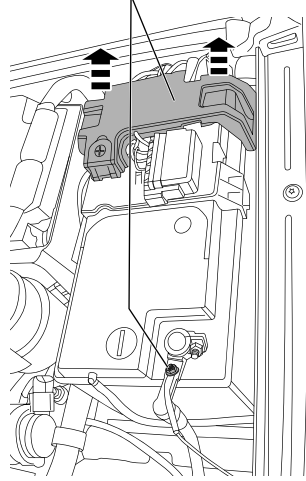
Diagram #:3

3. Feed the single vehicle harness connector into the tub through the opening in the front left hand corner of the tub as shown. Run the vehicle harness down between the cabin and the tub to the chassis rail. Run the end with two (2) eyelet terminals to the front of the vehicle, and the end with two (2) connectors to the rear of the vehicle along the chassis rail, securing it with cable ties every 300mm to the existing harness on top of the chassis rail. Disconnect the existing connectors located behind the rear left hand wheel arch and connect the vehicle harness connectors to the previously disconnected connectors as shown. At the front of the vehicle open and secure the bonnet. Feed a draw wire down through the engine bay in the rear left hand corner near the battery and firewall as shown. Attach the end of the vehicle harness to the draw wire and pull the harness up to the battery terminals. **See Dia #3.**

VOLKSWAGEN AMAROK 1 & 3 PIECE REMOTE LOCKING KIT

4 CYLINDER ENGINE - BATTERY CONNECTION

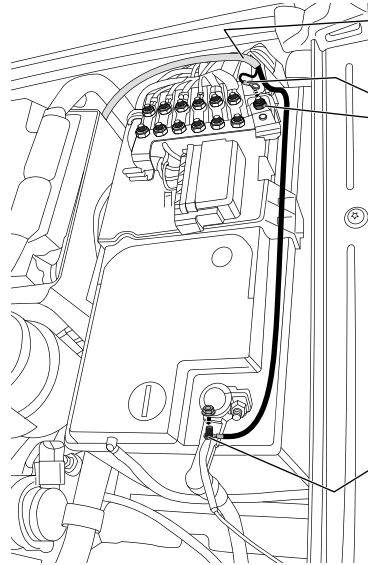
1 REMOVE BATTERY TERMINAL BLOCK COVER & NUT ON BATTERY TERMINAL



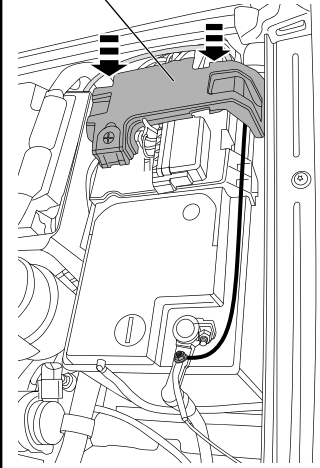
2 ROUTE VEHICLE HARNESS

3 REMOVE NUT CONNECT SHORT (RED) EYELET TERMINAL REPLACE NUT

4 CONNECT LONG (BLACK) EYELET TERMINAL REPLACE REMOVED NUT

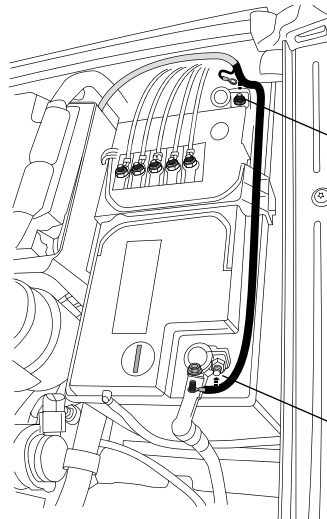


5 REPLACE BATTERY TERMINAL BLOCK COVER



6 CYLINDER ENGINE - BATTERY CONNECTION

1 REMOVE BATTERY TERMINAL BLOCK COVER & NUT ON BATTERY TERMINAL



2 REMOVE NUT CONNECT SHORT (RED) EYELET TERMINAL REPLACE NUT

3 CONNECT LONG (BLACK) EYELET TERMINAL REPLACE REMOVED NUT

4 REPLACE BATTERY TERMINAL BLOCK COVER

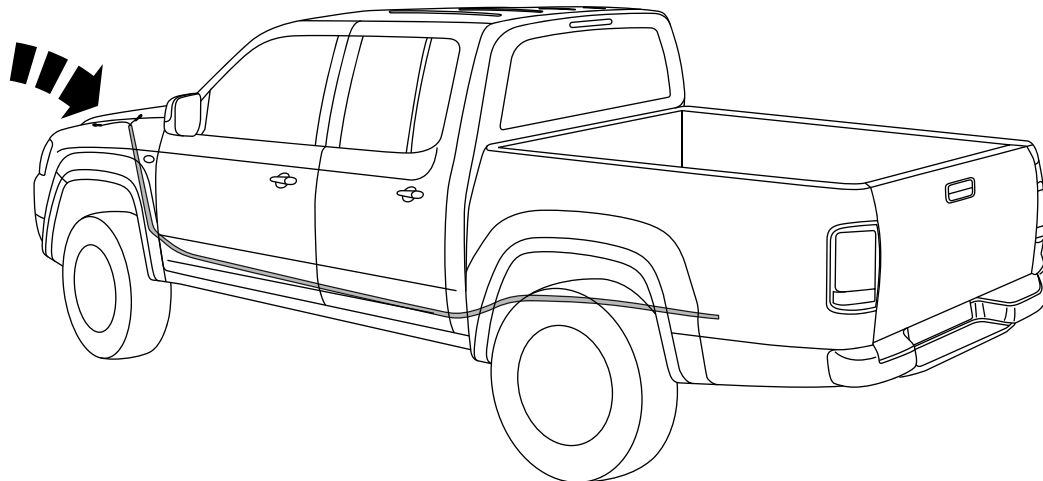


Diagram #4

4. Route the vehicle harness along the firewall and connect the short eyelet terminal to the battery terminal block as shown. Run the long eyelet terminal up to the main terminal at the front of the battery and connect as shown. Tidy up harness and replace the battery terminal block cover. **See Dia #4.**

VOLKSWAGEN AMAROK 1 & 3 PIECE REMOTE LOCKING KIT

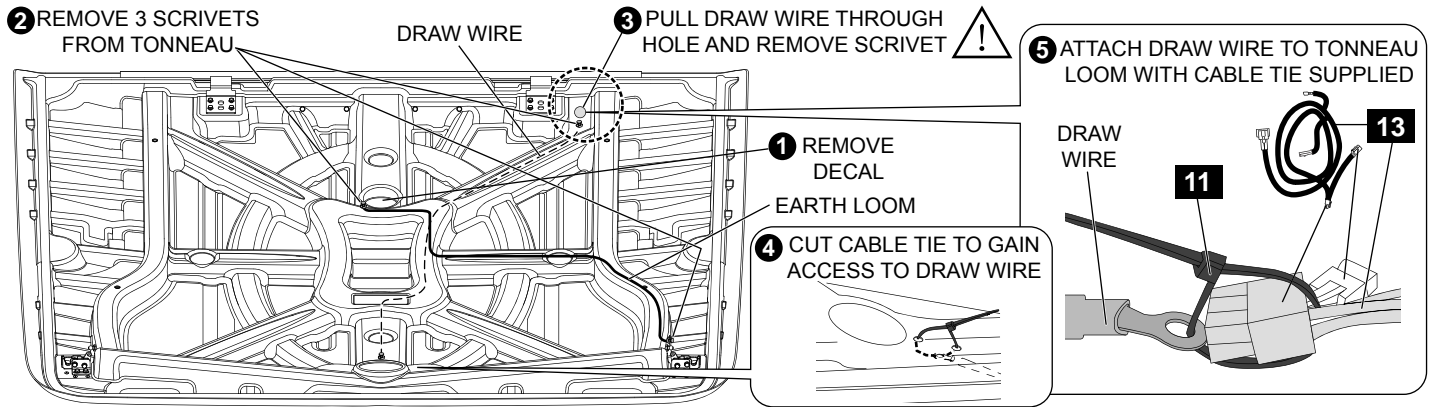


Diagram #5

5. Remove black decal located over hole as shown. Remove and retain the lock cover by removing two scrivenets. Locate the (3) scrivenets and remove from the tonneau. Do Not remove the scrivenets from the earth loom or draw wire at this stage. Pull draw wire back through large hole near hinges and remove scrivenet from this end of draw wire. Cut cable tie near the lock to gain access to the draw wire. Attach tonneau loom to this end of draw cable with a cable tie as shown, **Do Not pull cable tie tight. See Dia #5.**

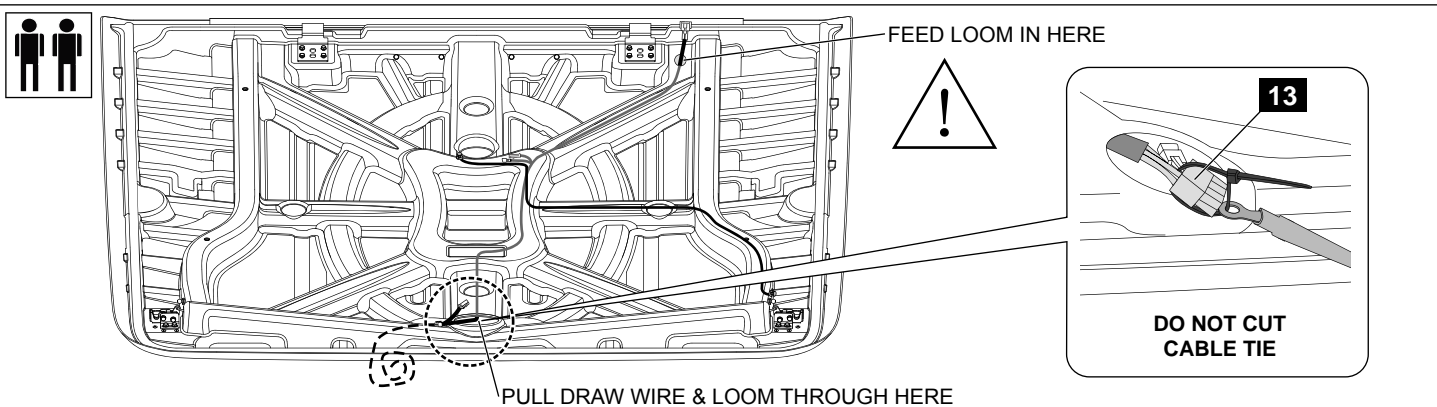


Diagram #6

6. Pull draw wire through the lock cover hole and remove scrivenet. This requires one person to feed the loom and the other to pull the draw wire. **IMPORTANT: This is to be done carefully and slowly. Leave the draw wire attached to the tonneau loom. See Dia #6.**

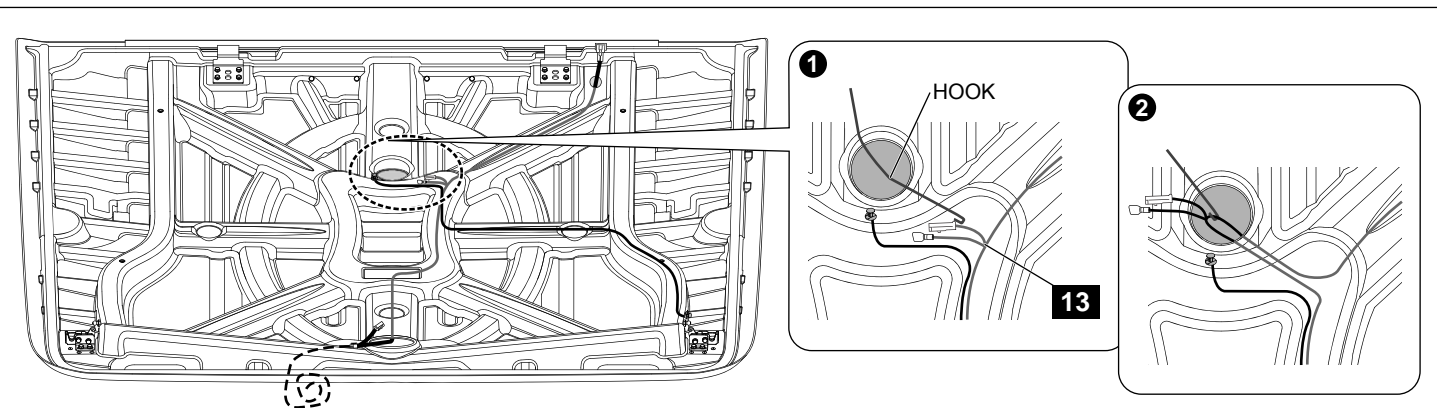


Diagram #7

7. Using a hook locate the harness through the light hole & pull out light connector & earth terminal branches. You may need to re-pull the draw wire at the lock cover to access connectors. **See Dia #7.**

VOLKSWAGEN AMAROK 1 & 3 PIECE REMOTE LOCKING KIT

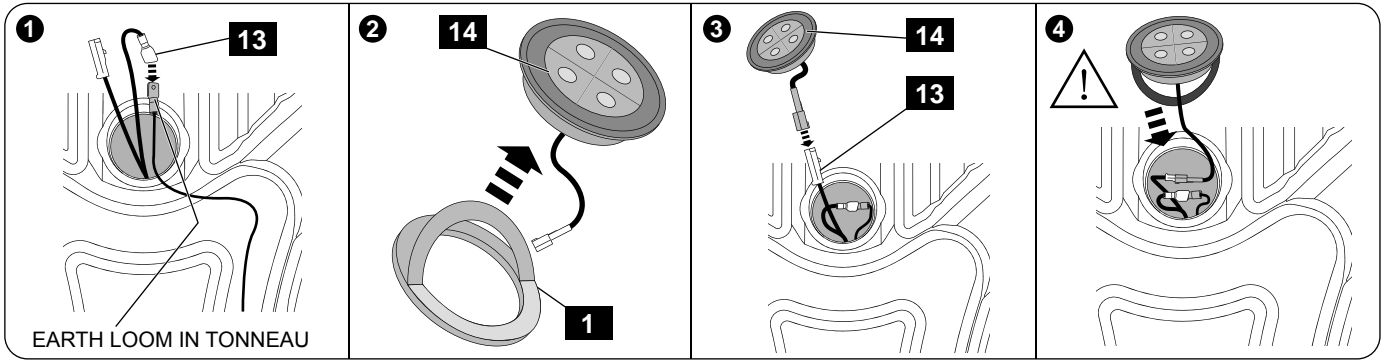


Diagram #:8

8. Remove scrivet and pull earth loom through light hole. Connect earth terminal to terminal on tonneau loom. Remove tape liner from one side of double sided foam tape gasket and fit gasket to the interior light and apply pressure to ensure maximum adhesion. Connect the 2-way male connector from the tonneau wiring loom to the female connector of the interior light. Remove tape liner from double sided foam tape gasket and insert interior light into the tonneau cover and apply pressure to ensure maximum adhesion. **IMPORTANT: Ensure all wiring for the interior light and earth loom is contained inside the tonneau cover before installing the interior light. See Dia #8.**

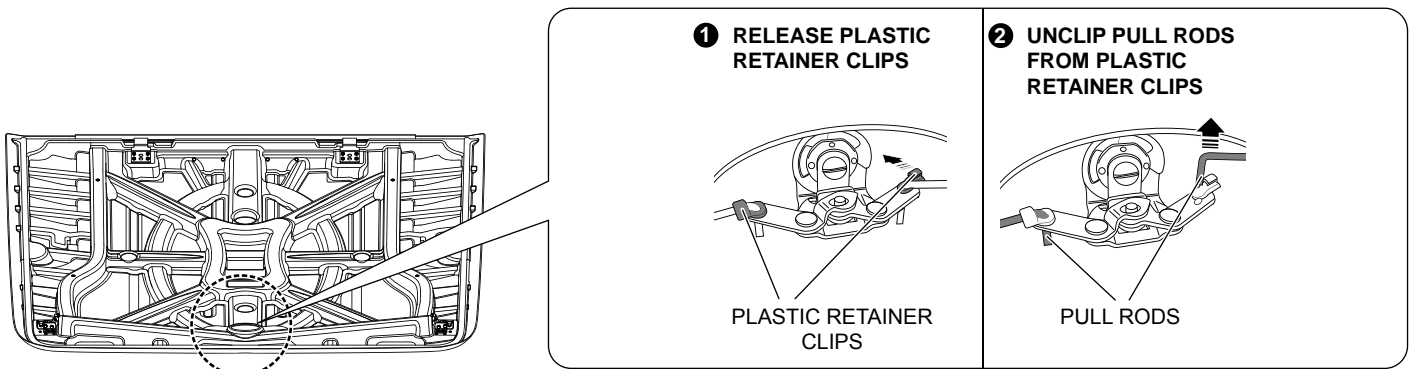


Diagram #9

9. Release plastic retainer clips and unclip pullrods as shown. See Dia #9.

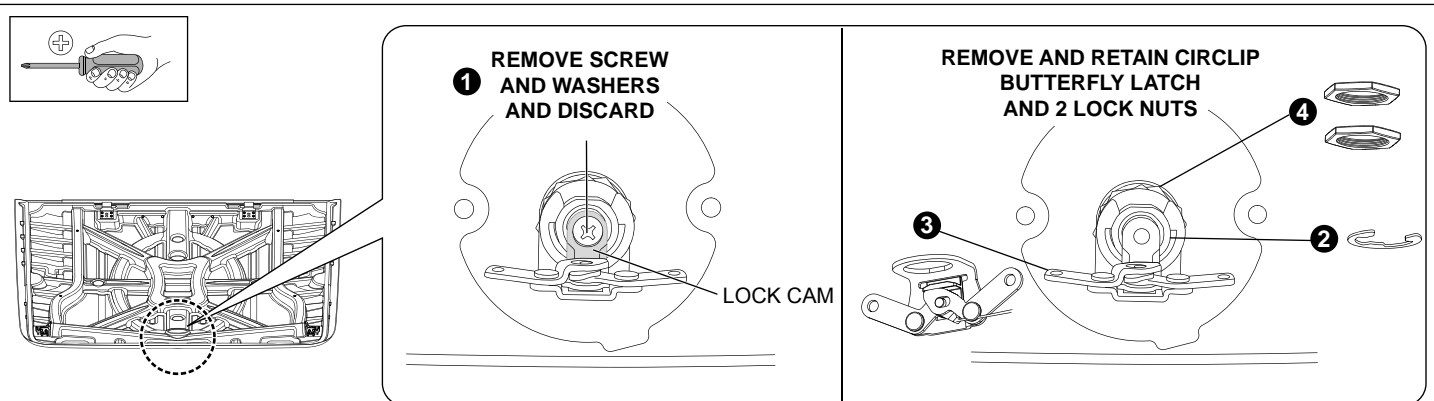


Diagram #:10

10. Remove and discard the screw and washers holding the lock cam in place as shown. Remove and retain the circlip and remove the butterfly latch assembly and lock cam. Unscrew the two lock nuts holding the lock barrel assembly. Note: Keep one large nut as you will need one for reassembly. See Dia #10.

VOLKSWAGEN AMAROK 1 & 3 PIECE REMOTE LOCKING KIT

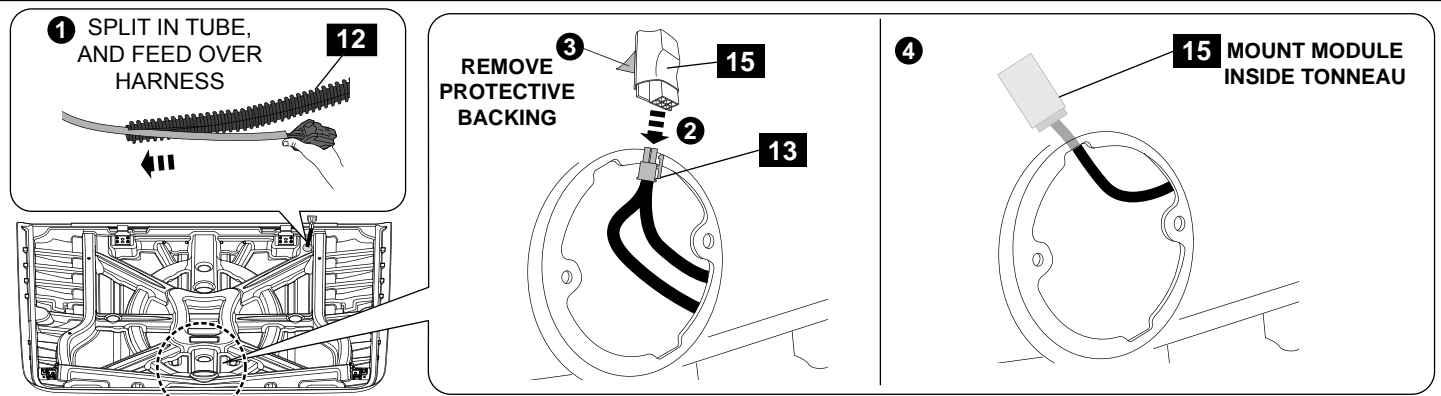


Diagram #:11

11. Fit convoluted tube to tonneau harness that protrudes from the cover, by opening up the split in the tube and feeding it over the cable with grey foam insulation near the connector first. Connect the 6-way male connector on the tonneau wiring loom to the module. Remove the protective backing from the module and adhere it to the inside of the tonneau cover as shown. See Dia #11.

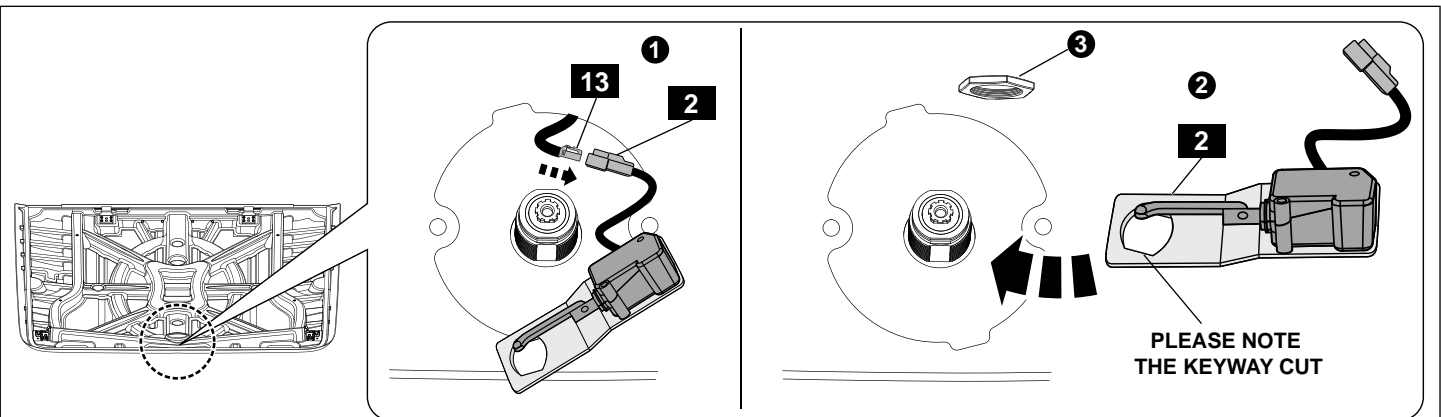


Diagram #:12

12. Fit the remote bracket over the lock barrel assembly and secure with one lock nut. Note: The remote lock bracket has a keyway cut into it on angle for the lock barrel. Ensure that the bracket sits at this angle in relation to the lock barrel. See Dia #12.

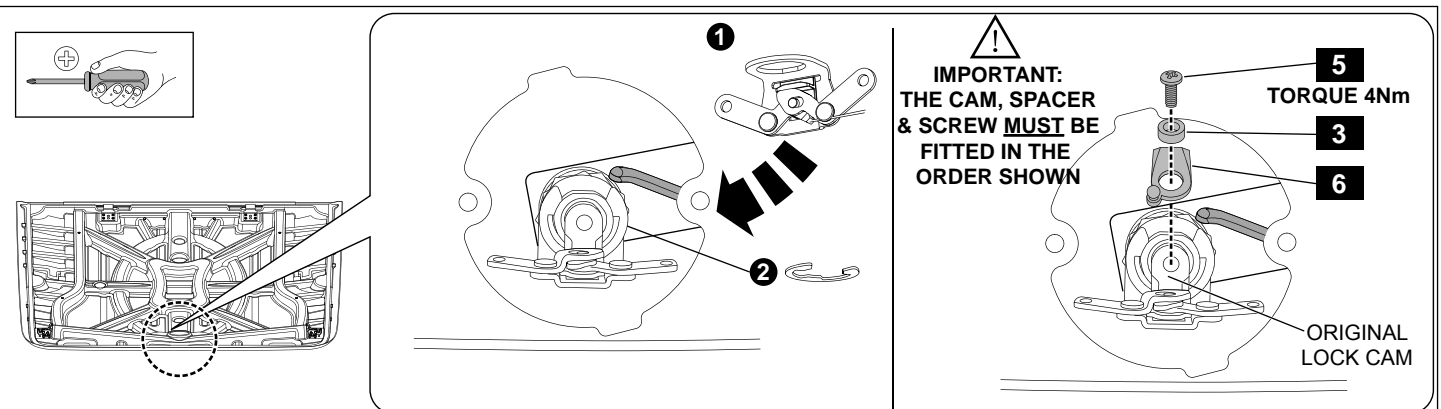


Diagram #:13

13. Refit the butterfly latch and secure with the circlip. Fit the original lock cam, ball stud cam, plastic spacer, to the locking mechanism and secure with the Phillips head screw provided. Tighten to Torque 4Nm. **IMPORTANT: Ensure both lock cams are aligned with each-other and with the locking mechanism as shown. See Dia #13.**

VOLKSWAGEN AMAROK 1 & 3 PIECE REMOTE LOCKING KIT

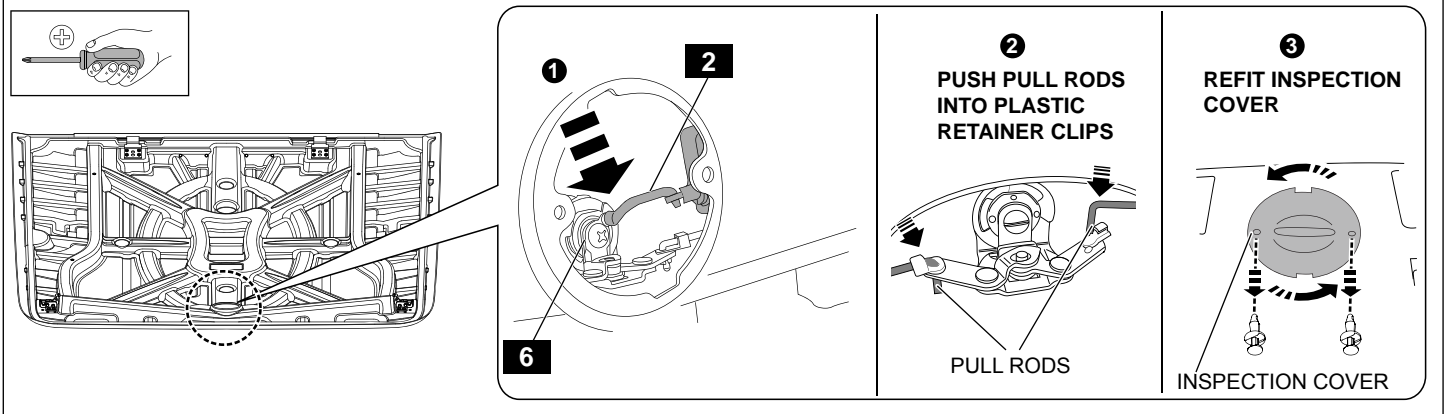


Diagram #:14

14. Clip the pull rod from the actuator onto the lock cam ball stud as shown. Adjust pull rods so that they clip back into the retainer clips correctly. Do this by rotating them clockwise to shorten them or anti-clockwise to lengthen them (via internal turn buckle). Clip pullrods and retainer clips back into position. Test lock by pressing the button on top of Tonneau Cover. If latch mechanism **DOES NOT** release, return to **Step 2** and shorten the pullrods. If it **DOES** release, replace inspection cover.

NOTE: Ensure the joining element and pullrod clip are attached to the actuator. If they are not, clip them into place as shown. Also ensure all wiring is moved out of the way and can not interfere with the locking mechanism. See Dia #14.

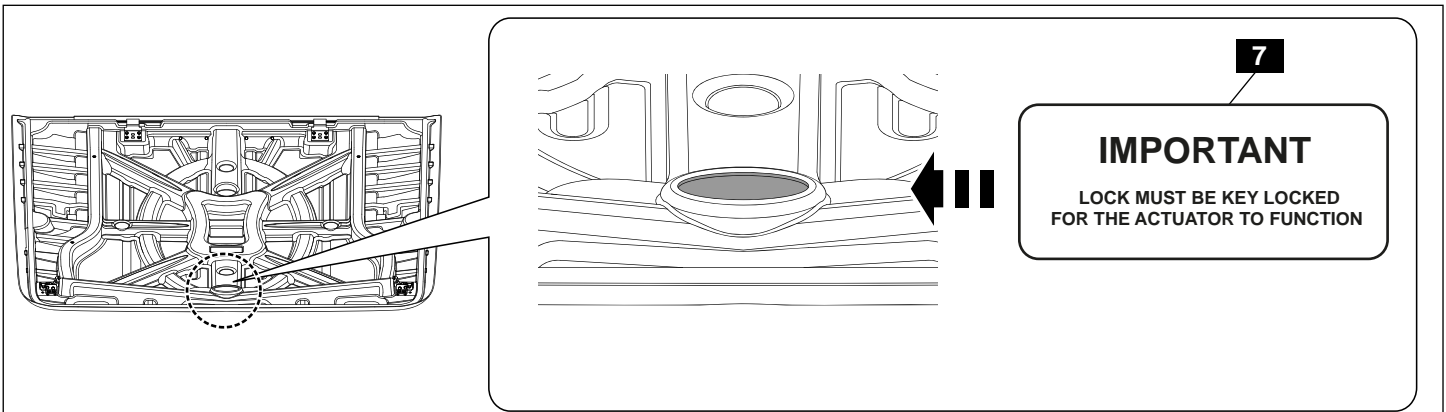


Diagram #:15

15. Place the adhesive label (7) next to the lock cover on the tonneau cover. See Dia #15.

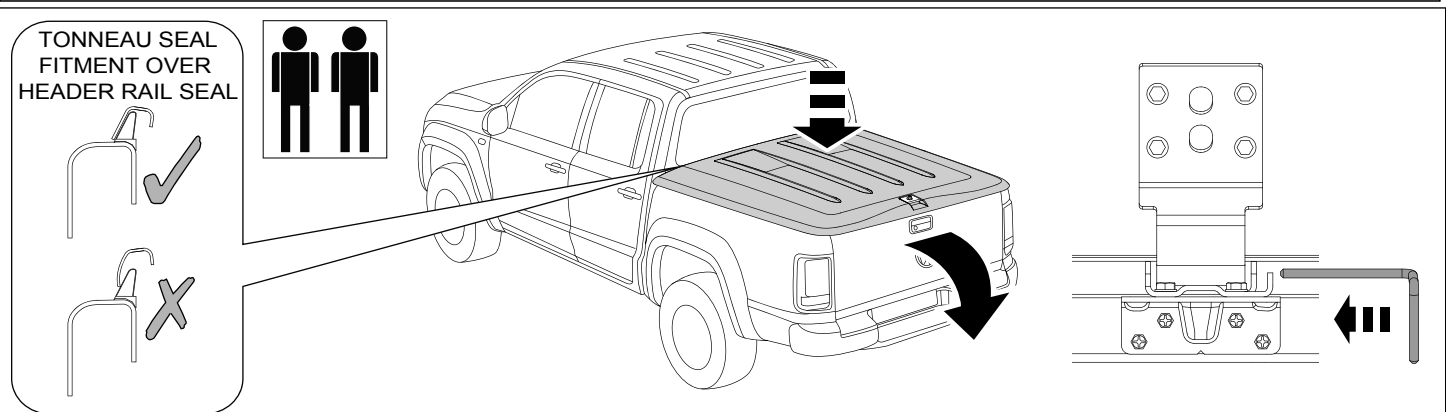


Diagram #:16

16. **Open vehicle's tailgate.** Two people are required to carry out the fitment of the tonneau cover. Carefully fit tonneau cover to vehicle ensuring seal at the front of the tonneau cover sits correctly over the header rail seal as shown. Secure hinges with hinge pins as shown. See Dia #16.
IMPORTANT: Ensure hinge pins clip into retaining leg on lower hinges.
 If misaligned, seal can be pushed forward from inside of the tub.

VOLKSWAGEN AMAROK 1 & 3 PIECE REMOTE LOCKING KIT

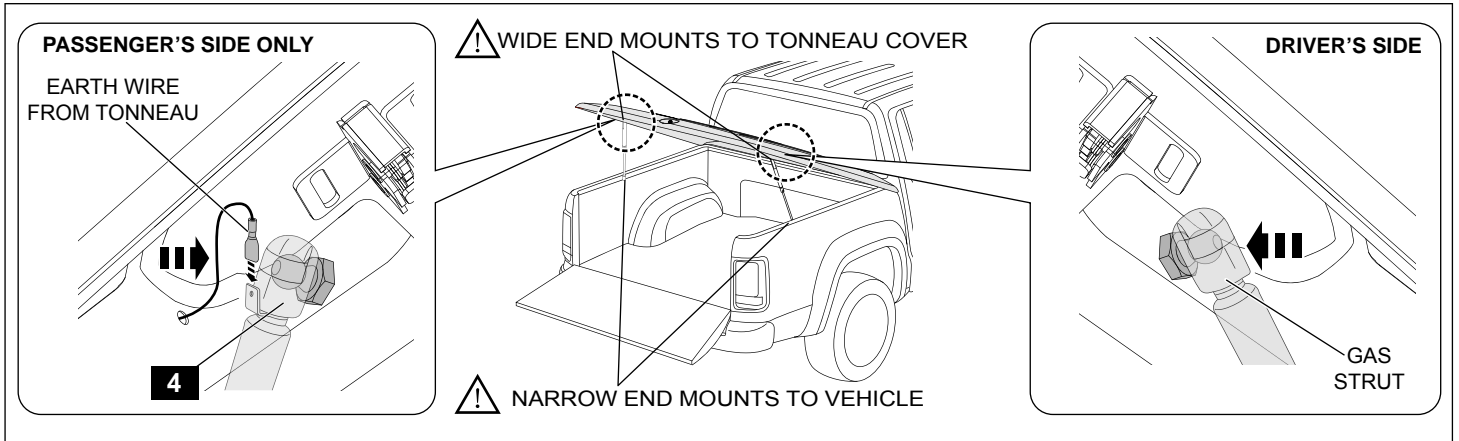


Diagram #:17

17. Attach gas struts (already attached to the vehicle) to the tonneau cover by clipping into place as shown. Ensure the earth wire on the passenger's side gets connected to the gas strut connector as shown. **Ensure the narrow end is mounted to the vehicle and the wide end mounts to the tonneau cover. See Dia #17. !! Failure to do so Voids Warranty on gas struts!!**

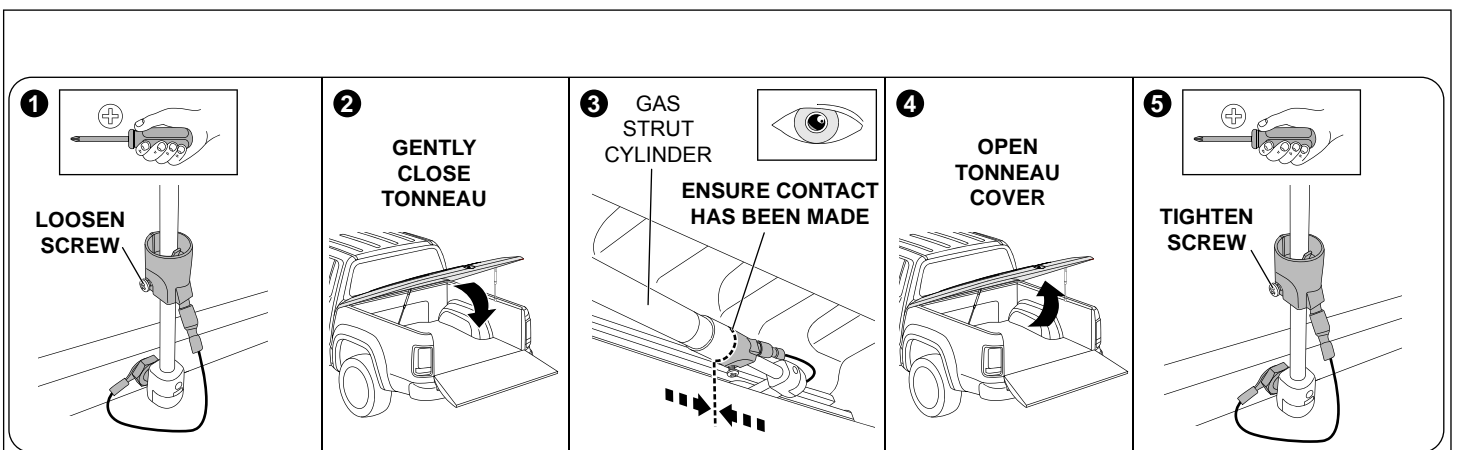


Diagram #:18

18. Loosen the screw found on the terminal housing on the passenger's side gas strut so it can move freely. Close the tonneau cover. Inspect the passenger's side gas strut and ensure the terminal housing is pushed against the gas strut's cylinder as shown. This is critical to ensure the light switches off when the tonneau cover is closed. Open the tonneau cover and tighten the screw. **See Dia #18.**

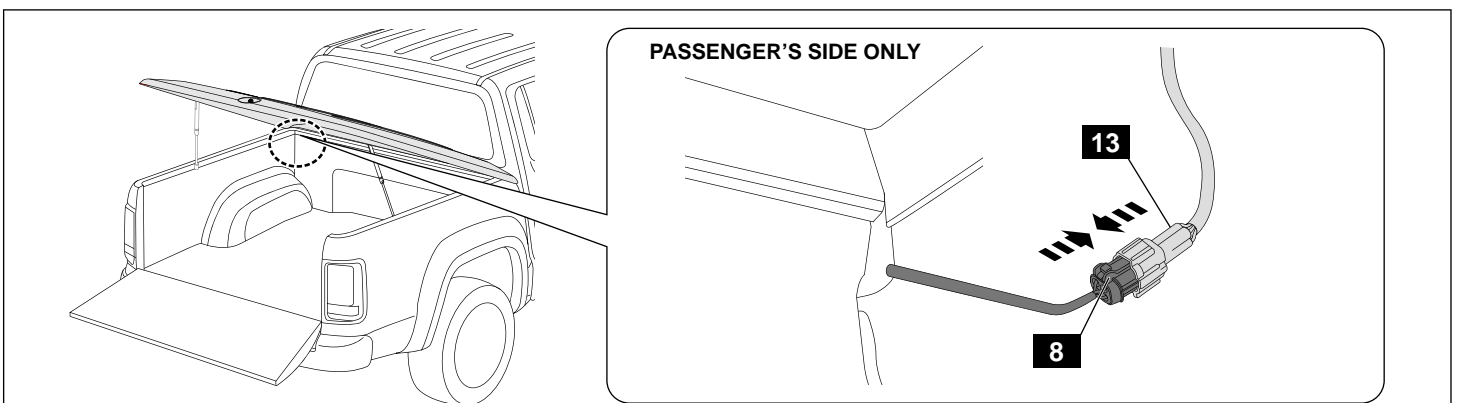


Diagram #:19

19. Connect the vehicle wiring loom to the tonneau wiring loom via the 8-way connectors located at the front of the tub as shown. **See Dia #19.**

VOLKSWAGEN AMAROK 1 & 3 PIECE REMOTE LOCKING KIT

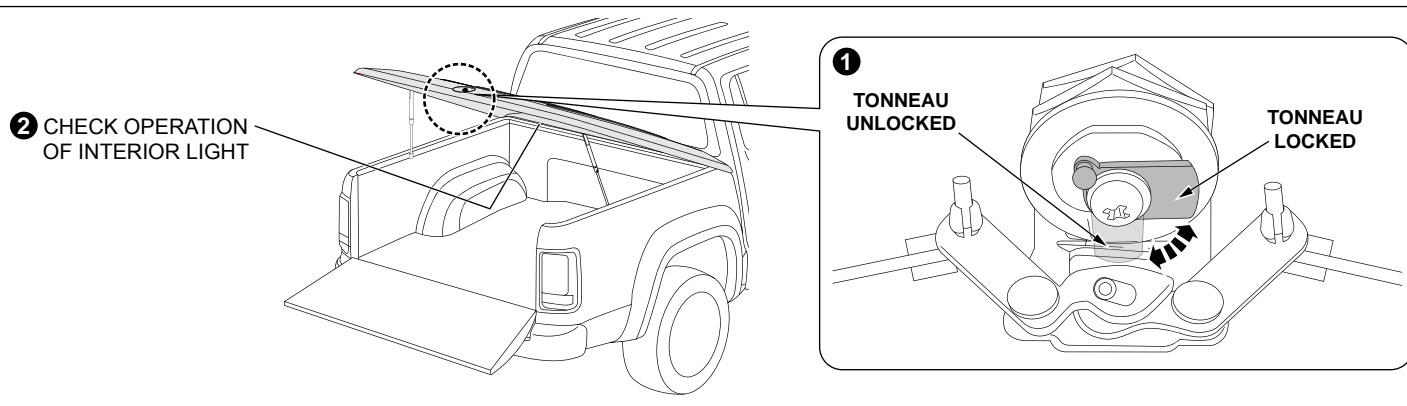


Diagram #:20

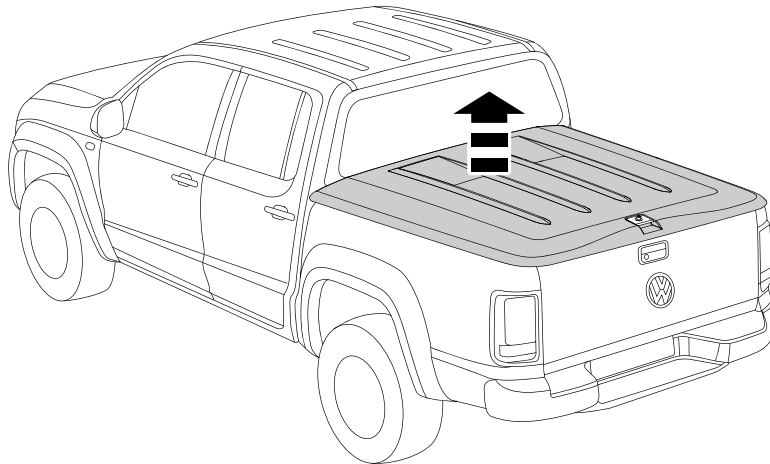
20. Manually lock & unlock tonneau using the tonneau key. The key supplied with the hard tonneau cover will over-ride the remote actuator of the lock. In standard conditions, ensure the lock barrel is rotated by the tonneau key to the locked position. The unlocking and locking of the cover will be controlled by pushing the vehicles unlock button on the key fob (that moves a secondary cam). Check operation of central unlocking mechanism by pressing lock and unlock on vehicle's key. Review operation through inspection hole. Test operation of lock mechanism by pressing tonneau's push button after you have pressed lock on vehicle's key, and then again after you have pressed unlock on vehicle's key. Finally, replace the inspection cover.

NOTE: If the tonneau key is used to unlock the cover, ensure to relock the cover using the same key.

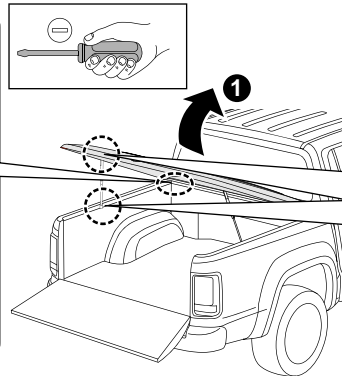
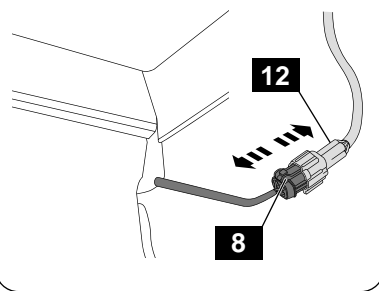
Open and close tonneau with tailgate open to check if interior light is functioning correctly. Ensure the light turns on when tonneau is open and turns off when tonneau is closed. If interior light does not work, check adjustment of gas strut switch (refer to figure 18).
See Dia #20.

REMOVAL OF TONNEAU COVER

TWO PEOPLE ARE REQUIRED TO CARRY OUT THE REMOVAL OF THE TONNEAU COVER.



2 PASSENGER'S SIDE ONLY



3 PASSENGER'S SIDE ONLY

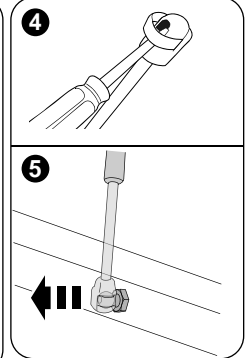
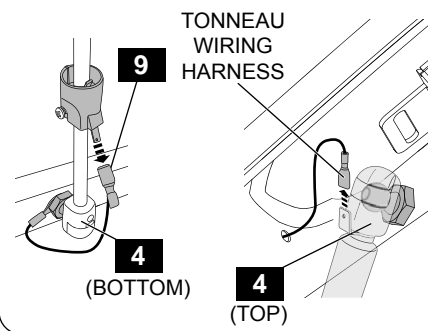


Diagram #:1

1. Open tonneau cover, disconnect 4-way connectors at the front of the tub. Disconnect the two (2) spade terminals on the passenger side gas strut as shown. Detach gas struts by inserting a small screw driver and adjusting the spring clip on the strut as shown. **NOTE: Do Not remove the spring clip only a small amount of levering is required to detach. See Dia #1.**

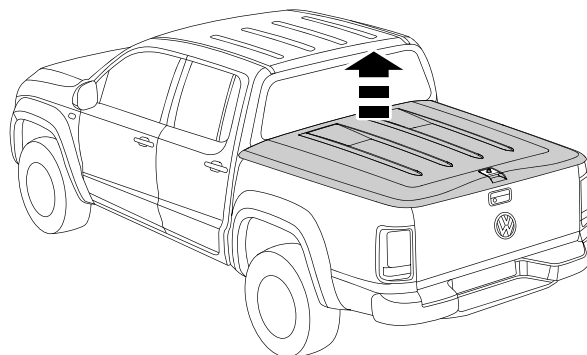
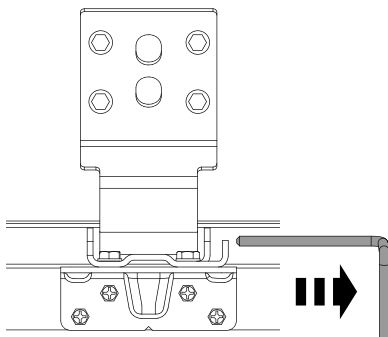


Diagram #:2

2. Remove hinge pins and then remove the Tonneau Cover. See Dia #2.



TO REPLACE THE TONNEAU COVER:
Reverse the sequence and the procedures of the two (2) Figures above.

