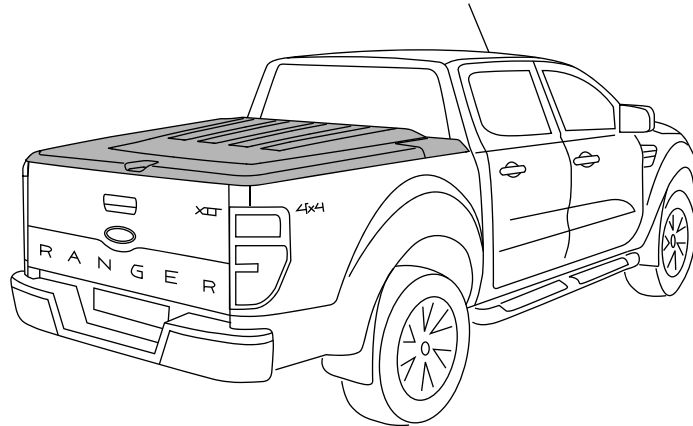


FORD RANGER PX INSTALLATION INSTRUCTIONS REMOTE LOCKING KIT FOR HARD TONNEAU COVER



Installation Time: Approx. 90 Minutes

Care Instructions:

Clean Tonneau Cover with a mild detergent and water solution.



Do not use abrasive cleaners or solvents.

**Place these instructions in vehicle's glove box after installation is complete****TONNEAU COVER - IMPORTANT:**

- Read instructions carefully before installation. It is strongly recommended that installation is conducted by an authorized dealer.
- This product must be installed exactly as specified in these instructions. Failure to do so may result in improper fit and/or retention.
- Recommend installation by 2 people.
- Fitting Instructions must be given to the end customer to understand correct removal and replacement process onto the vehicle.
- Do Not cycle remote key fob continuously or the actuator for operation of the remote locking system will burn out.

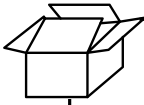
MAINTENANCE:

The gas struts are self lubricating and should only be cleaned occasionally with a damp cloth. Premature seal failure will result if solvents or lubricants are used to clean struts. Gas struts must be connected with the cylinder end to the Tonneau Cover or Warranty is Void. The locking mechanisms and latches only require occasional lubrication with Graphite Powder. DO NOT use any other lubricants or oils. Using alternative products will VOID Warranty. All installation hardware and fasteners must be checked every so often for tightness.

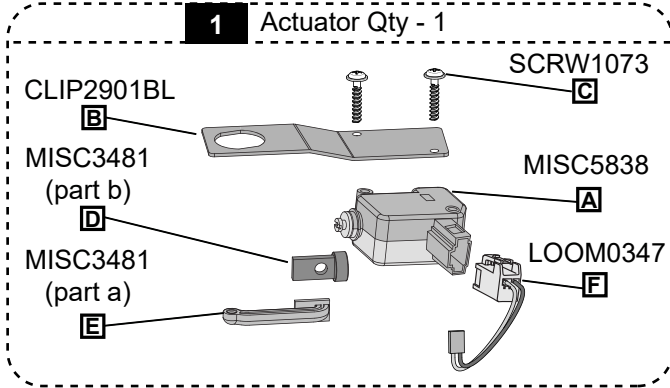
TOOLS REQUIRED:

- Torque Wrench
- Socket & Driver
- Spanners
- Side Cutters
- Phillips Head Screwdriver
- Flat Blade Screwdriver
- Draw Wire
- Wire Hook

PARTS CHECK SHEET



PARTS IN MAIN CARTON



2



Phillips Head Screw (SCRW0648-2)
Qty - 1

3



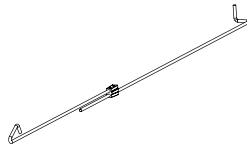
Lock Cam with Ball Stud (CLIP2419-3)
Qty - 1

4



Spacer (FAST0466)
Qty - 1

5



Pull Rod (LOCK0085)
Qty - 1

6



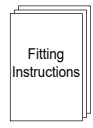
Vehicle Wiring Kit (LOOM0133)
Qty - 1

7



Tonneau Wiring Kit (LOOM0135)
Qty - 1

8



Fitting Instruction (FIT-TC0374a)
Qty - 1



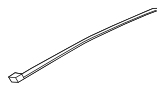
PARTS IN VEHICLE WIRING KIT - (LOOM0133)

9



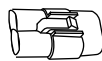
Vehicle Wiring Harness
Qty - 1

10



Cable Tie (small)
Qty - 11

11



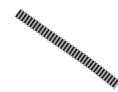
Male Terminal Housing
Qty - 1

12



T-Connector Loom
Qty - 1

13



Convoluted Tube
Qty - 1



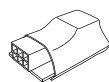
PARTS IN TONNEAU WIRING KIT - (LOOM0135)

14



Tonneau Wiring Harness
Qty - 1

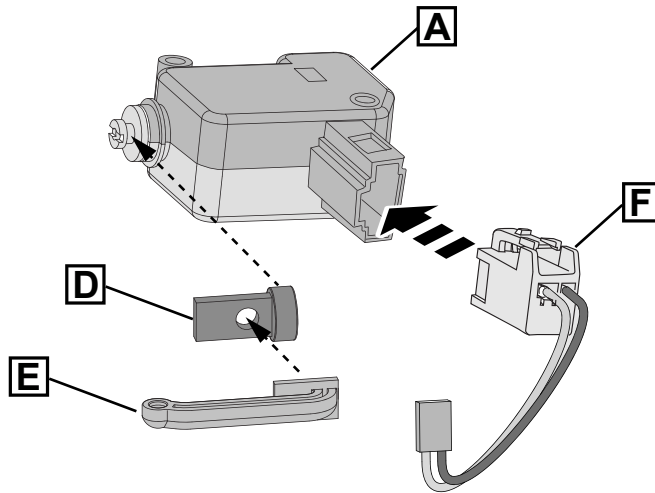
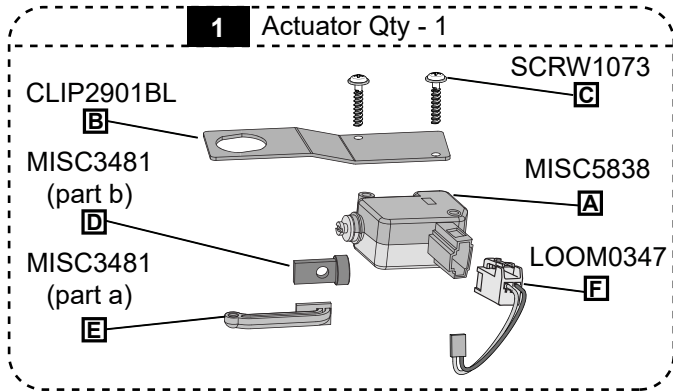
15



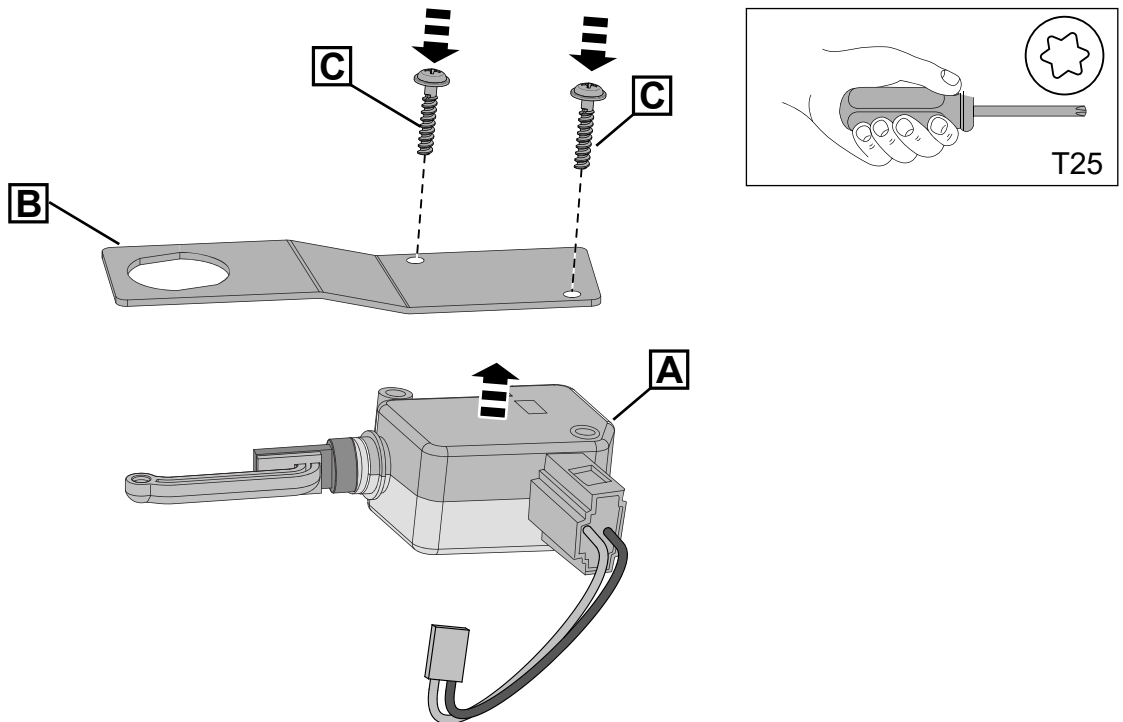
Module
Qty - 1



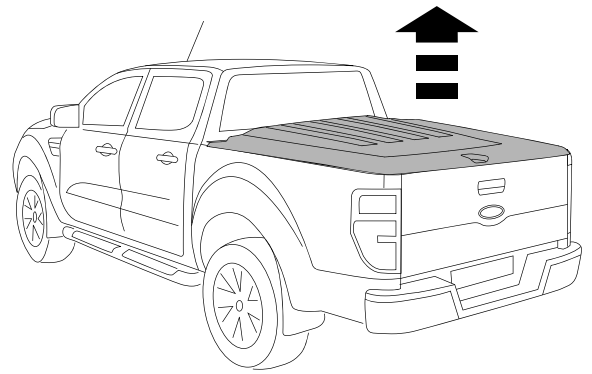
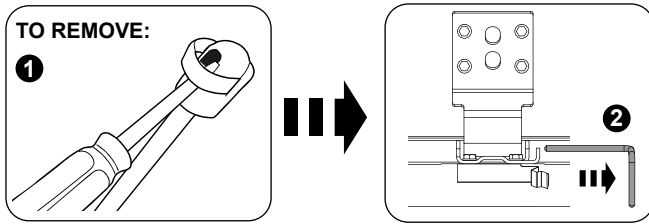
REMOTE LOCKING KIT - ACTUATOR ASSEMBLY



STEP A Connect the Pull Rod (E) to the Pull Rod Joiner (D) and slide into the end of the actuator (A) as shown. Connect the Loom (F) to the Actuator (A).

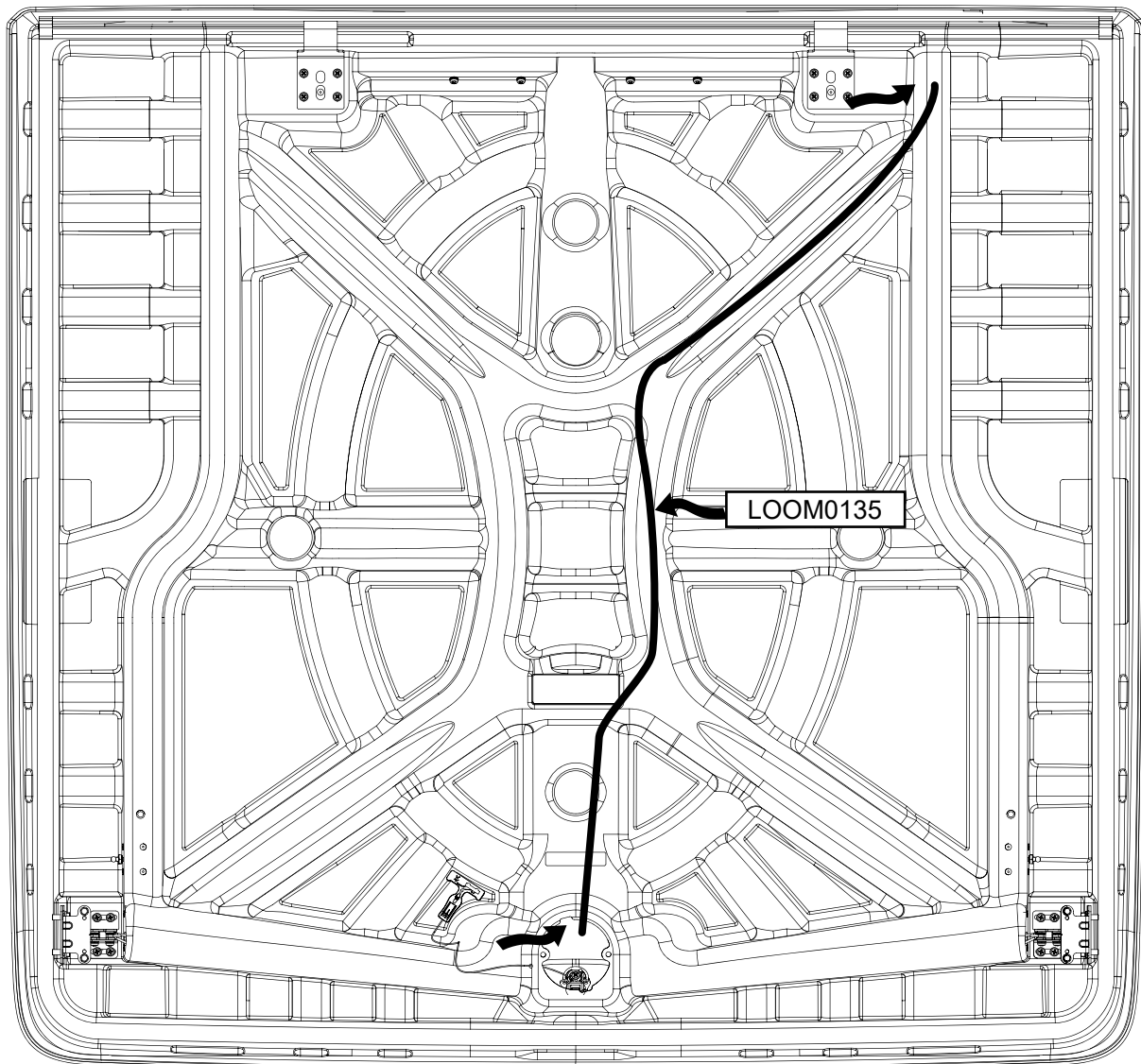


STEP B Secure the actuator (A) to the bracket (B) with 2x self tapping screws (C).
NOTE: Hand torque screws (C) until fully seated (tight).

**Diagram #:1**

1. Remove the tonneau cover by disconnect the struts from the tonneau cover first, using flat screwdriver as shown. Remove the two hinge pins.

NOTE: Two people are required to complete installation. Do Not remove Gas Struts from the vehicle.
Lay the tonneau cover upside down on a sheet or mat to prevent scratching. See Dia #1.

Diagram #2**WIRING DIAGRAM INSIDE THE TONNEAU COVER**

2. Using prefitted draw wire, feed the LOOM0135 from the lock opening to the front of the tonneau cover as shown.
Note: Follow detail steps below.

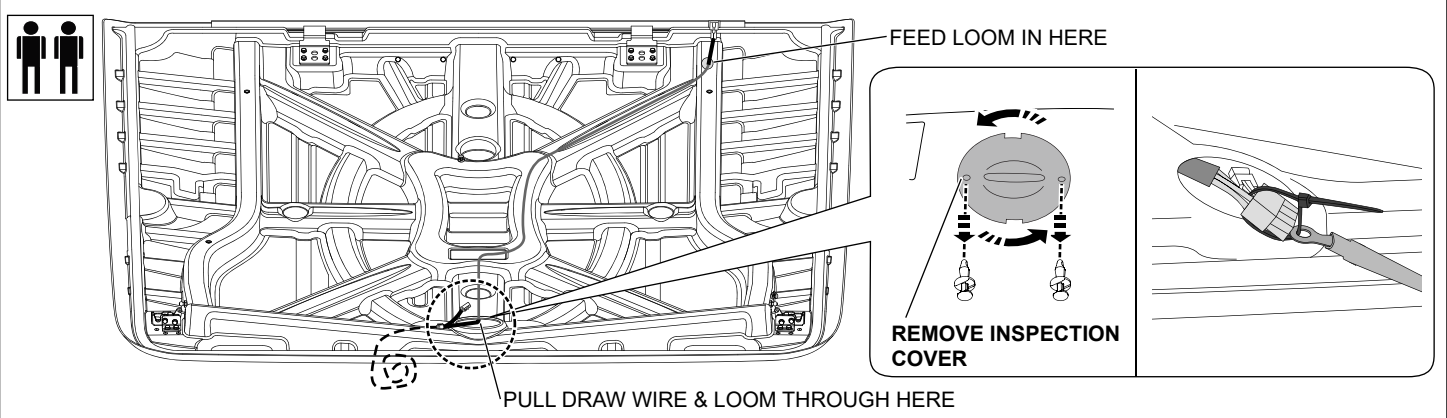


Diagram #3

3. Remove the lock inspection cover by removing two scrivets. Attach the tonne cover harness (grey plug end) to the pull wire as shown.

IMPORTANT: This is to be done carefully and slowly. Leave the draw wire attached to the tonneau loom.

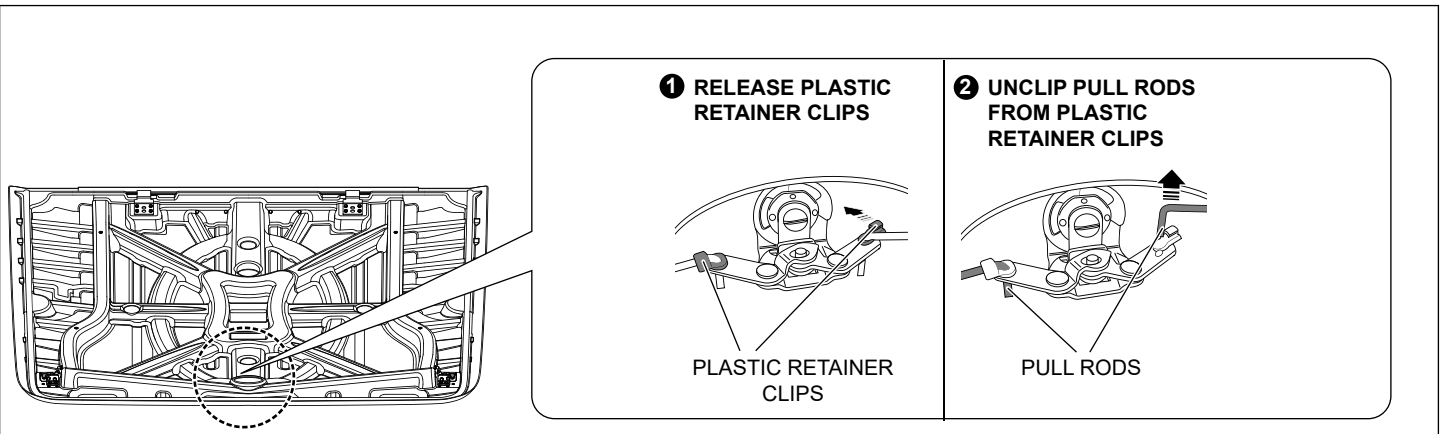


Diagram #4

4 Release plastic retainer clips and unclip pullrods as shown.

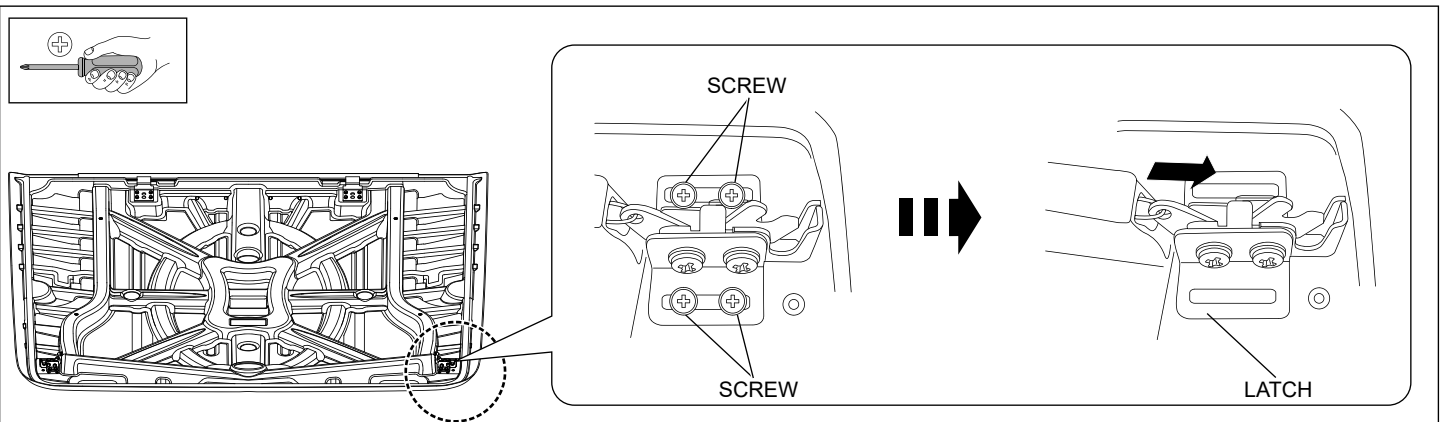


Diagram #5

5. **Note:** Mark the LHS latch position and screw locations on the tonneau cover to use this location for the latch reinstall. Remove the 4 screws holding the LHS rotary latch. Remove the latch and pullrod assembly from the tonneau cover. Adjust the new pull rod length to match the old one. Discard the old pull rod.

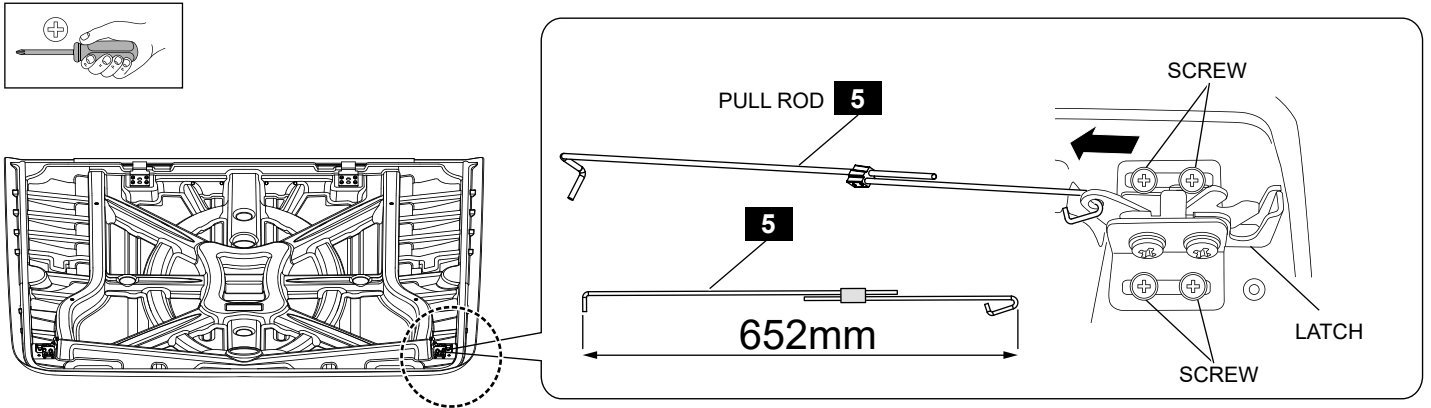


Diagram #6

6. Set the pull rod length to 652mm by turning each rod end. Attach the pull rod to the latch and slide the pull rod assembly into the tonneau. Attach the latch to the tonneau using four screws.

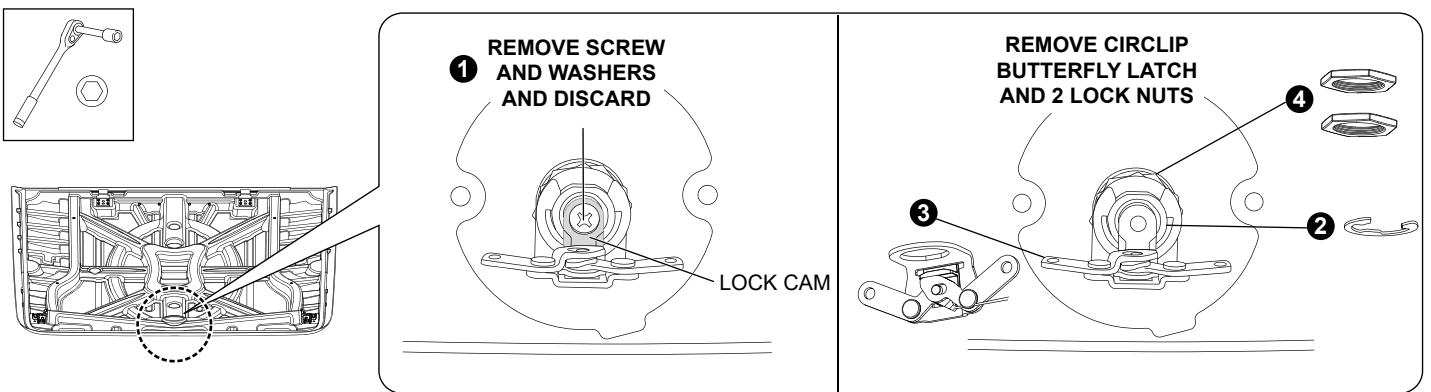


Diagram #:7

7. Remove and discard the screw and washers holding the lock cam in place as shown. Remove the circlip and remove the butterfly latch assembly. Unscrew the two lock nuts holding the lock barrel assembly. Note: Keep one large nut as you will need one for reassembly.

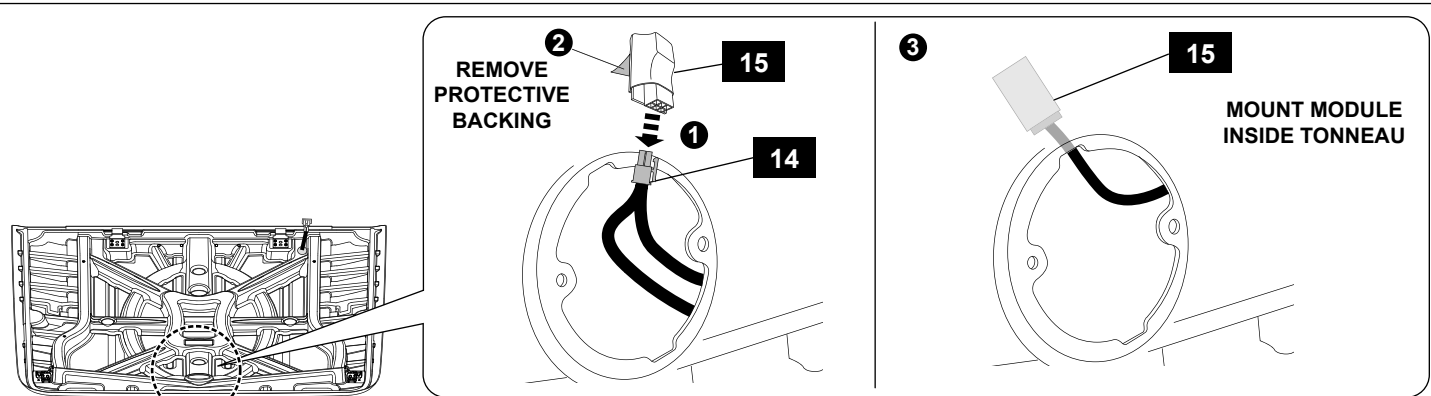


Diagram #:8

8. Connect the 6-way male connector on the tonneau wiring loom to the module. Remove the protective backing from the module and adhere it to the inside of the tonneau cover as shown.

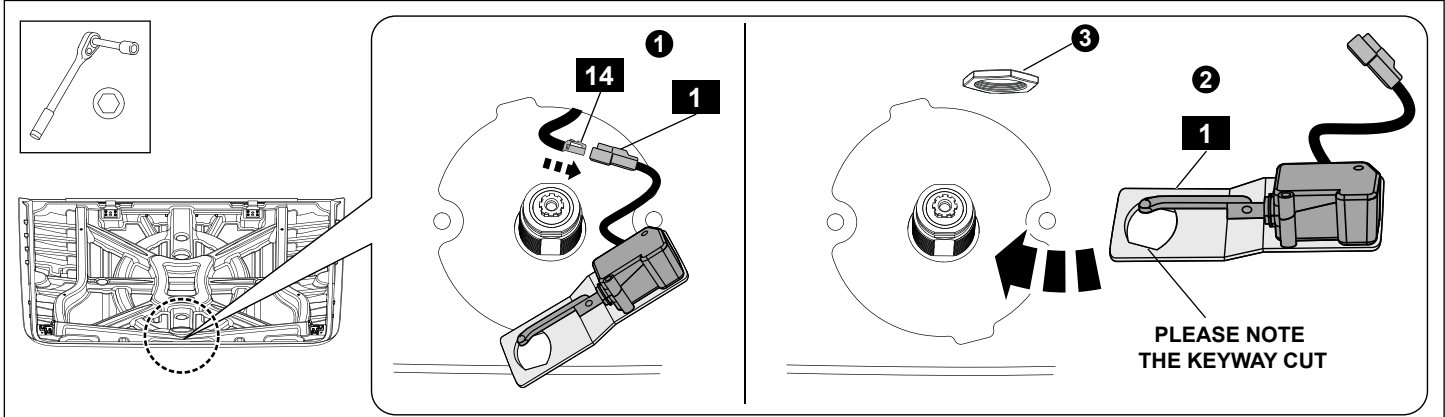


Diagram #:9

9. Fit the remote bracket over the lock barrel assembly and secure with one lock nut. **Note: The remote lock bracket has a keyway cut into it on angle for the lock barrel. Ensure that the bracket sits at this angle in relation to the lock barrel.**

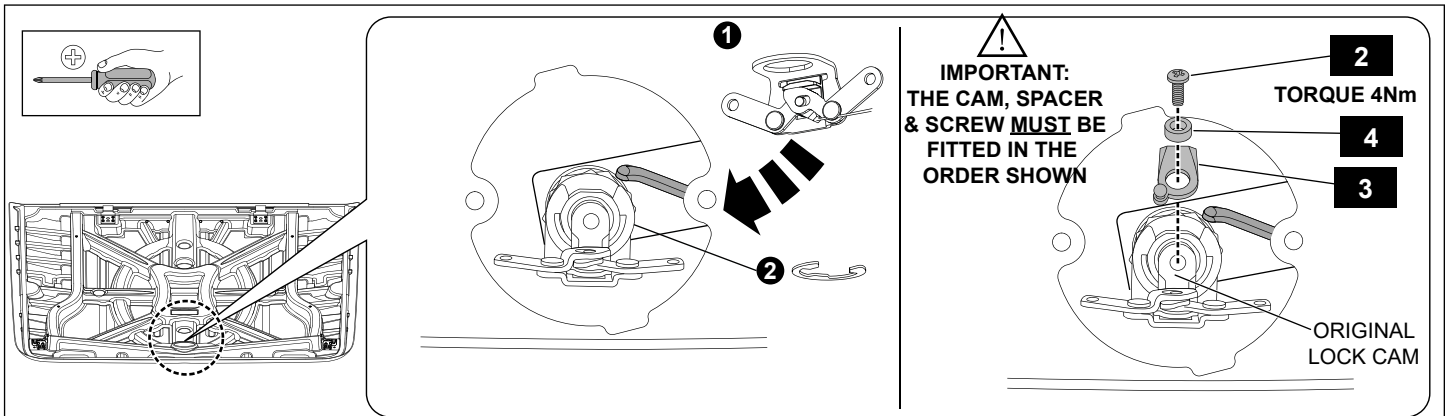


Diagram #:10

10. Refit the butterfly latch and secure with the circlip. Fit the ball stud lock cam and plastic spacer, to the locking mechanism and secure with the Phillips head screw provided. **Tighten to Torque 4Nm.**
IMPORTANT: Ensure both lock cams are aligned with each-other and with the locking mechanism as shown.

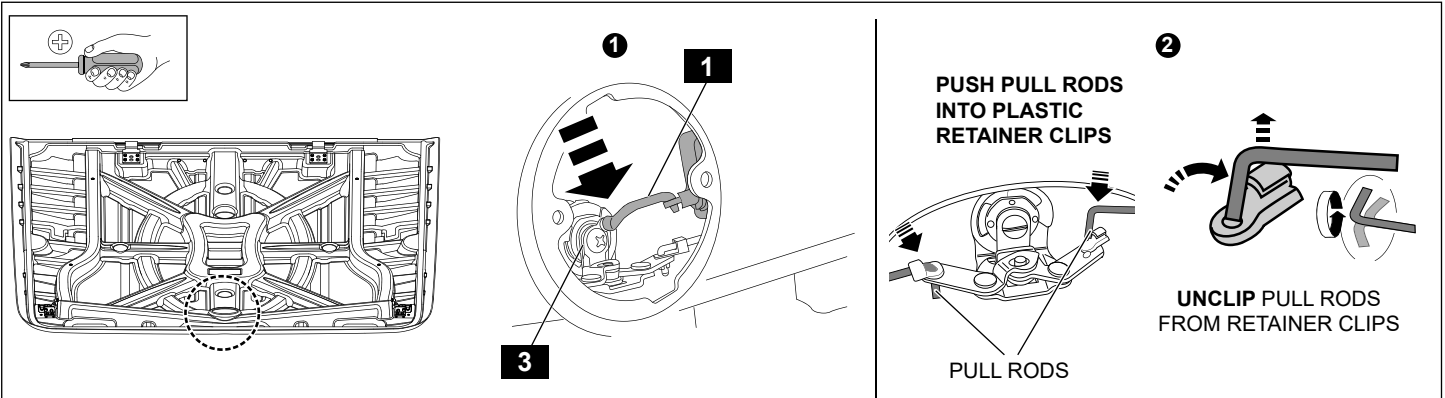
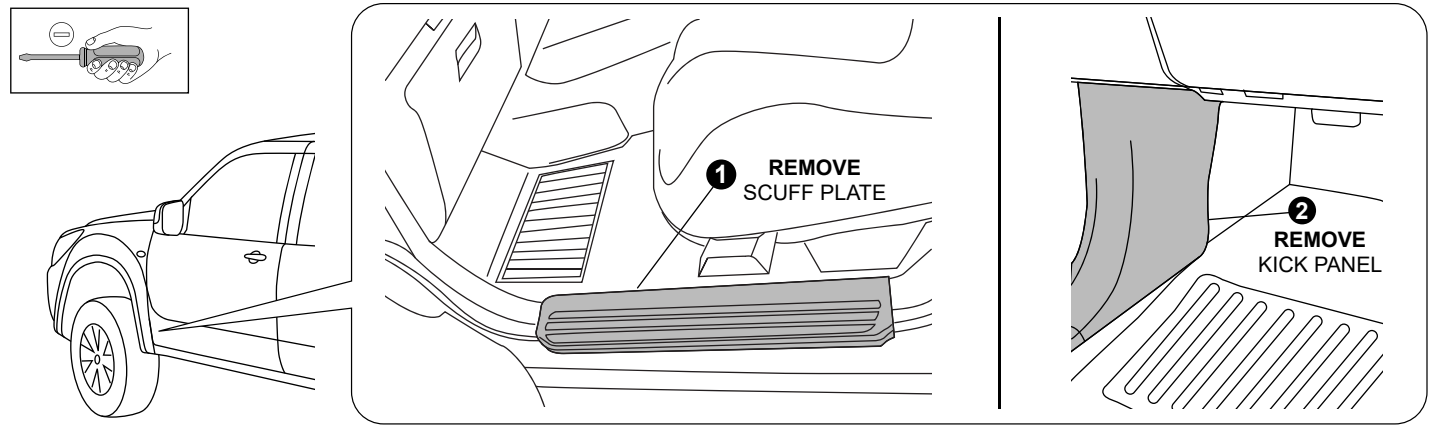
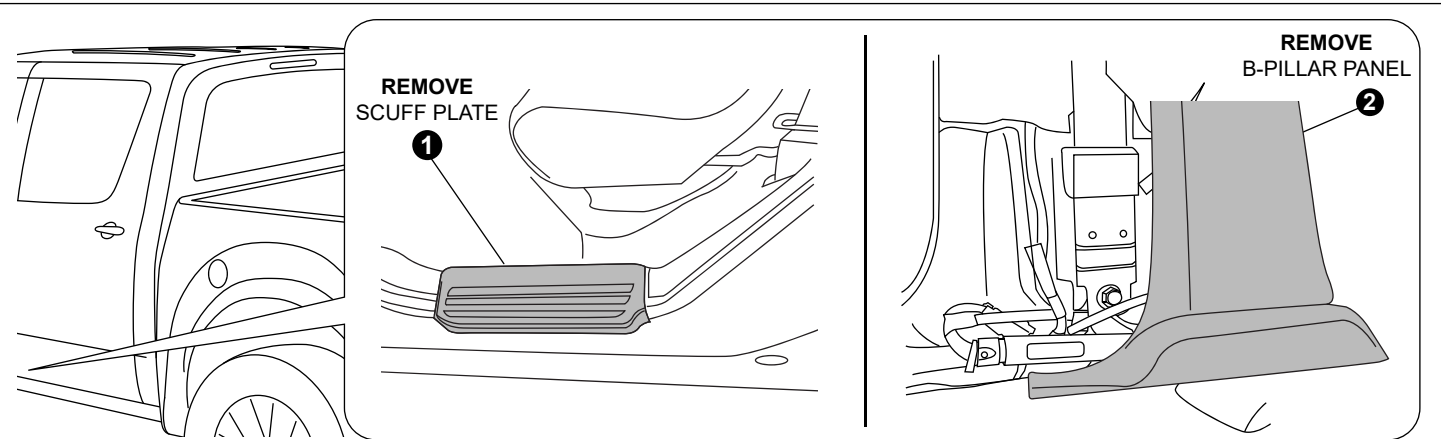


Diagram #:11

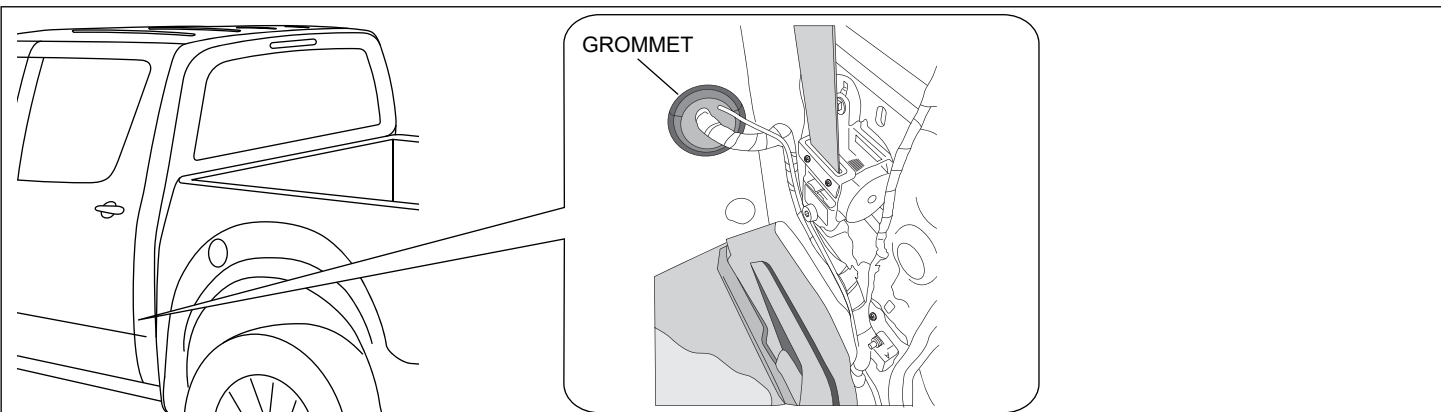
11. Clip the pull rod from the actuator onto the lock cam ball stud as shown. Adjust pull rods so that they clip back into the retainer clips correctly. Do this by rotating them clockwise to shorten them or anti-clockwise to lengthen them (via internal turn buckle). Clip pullrods and retainer clips back into position. Push clip on actuator connector through scrivet hole forward of inspection cover hole. Test lock by pressing the button on top of Tonneau Cover. If latch mechanism **DOES NOT** release, return to **Step 2** and shorten the pullrods. Unclip the latch pull rods from the locking mechanism. Wind the pull rods in a clockwise direction to shorten and anti-clockwise to lengthen. If it **DOES** release, replace inspection cover.
NOTE: Ensure the joining element and pullrod clip are attached to the actuator. If they are not, clip them into place as shown. Also ensure all wiring is moved out of the way and can not interfere with the locking mechanism.

**Diagram #:12**

12. Disconnect the battery positive terminal. Remove and retain the passenger (LH) side scuff plate and kick panel. Pull the door seal off the door trim.

**Diagram #:13**

13. Remove and retain passenger side (LH) rear scuff panel. Pull out bottom of the B Pillar trim, both front and rear. There is no need to remove this trim panel completely. Pull the door seal off the door trim.

**Diagram #:14**

14. On the rear seat row, lift the centre release strap and tilt the rear seat row forward. Remove and retain LH C Pillar panel trim. Pull the door seal off the door trim. Peel back the carpet liner at the rear of the cabin to reveal the grommet.

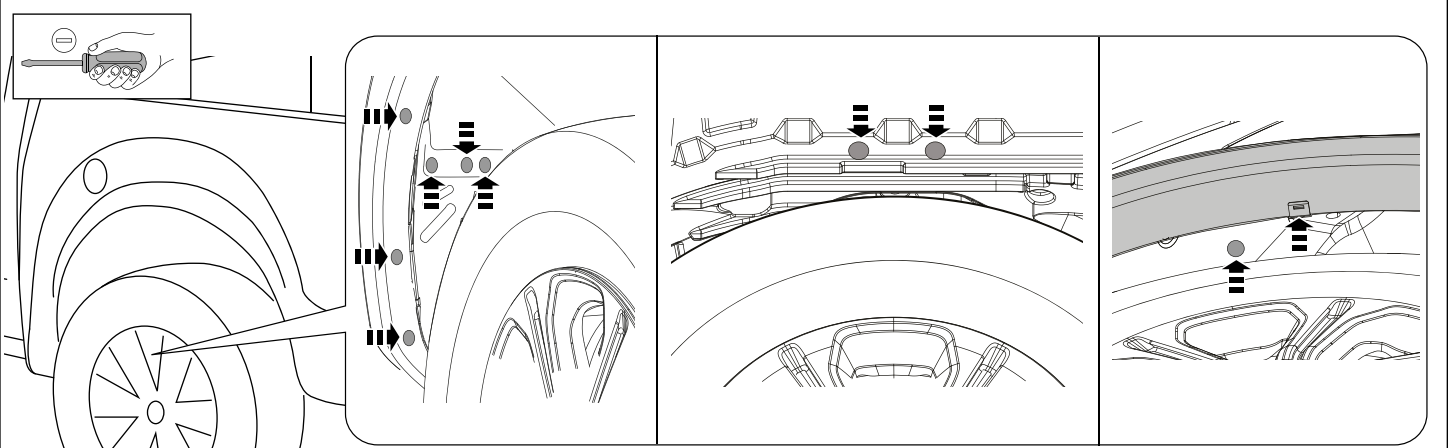


Diagram #:15

15. Remove and retain the 6x wheel arch liner scrivenets at the front and top of the LH rear wheel well. If the vehicle is fitted with fender flares, remove and retain the forward 3xFF scrivenets and 1xFF clip at the top from the LH rear wheel FF. Pull back the wheel arch liner to get access to the fuel flap harness connectors.

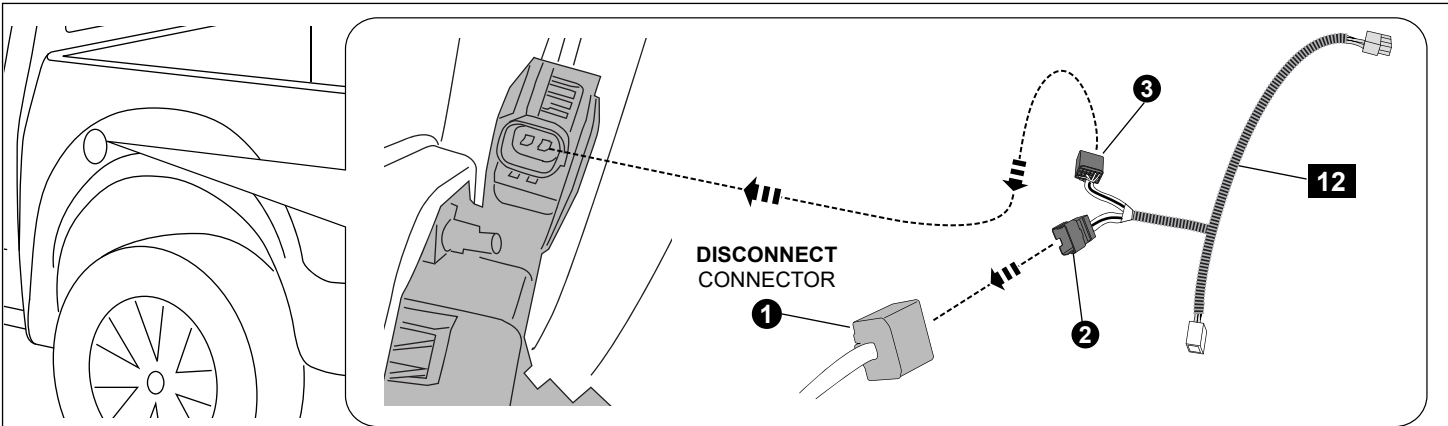


Diagram #:16

16. Disconnect the fuel flap connectors. Patch the shorter, secondary vehicle side harness between the two fuel flap connectors.

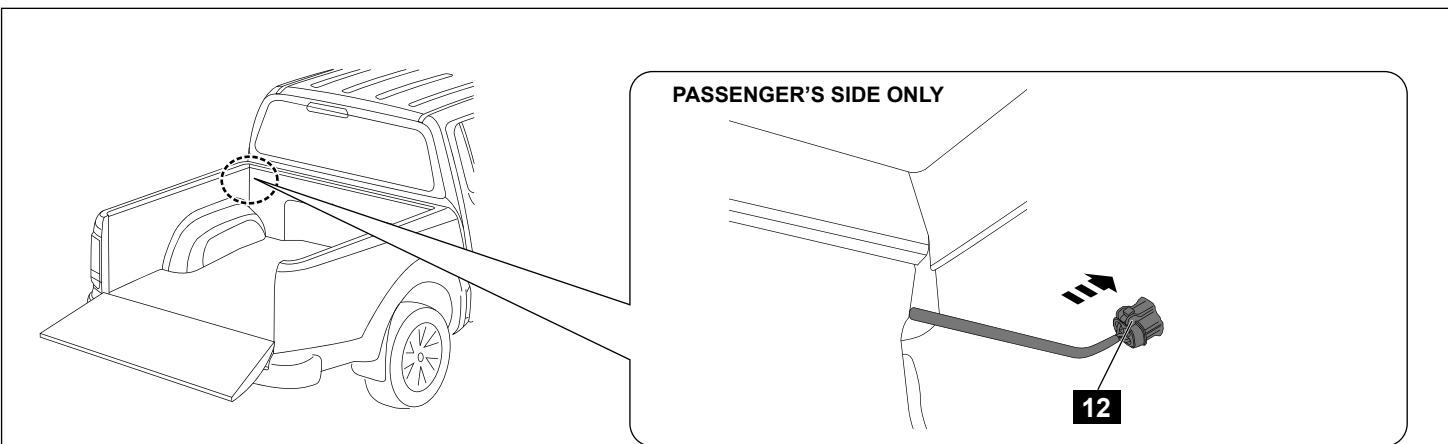
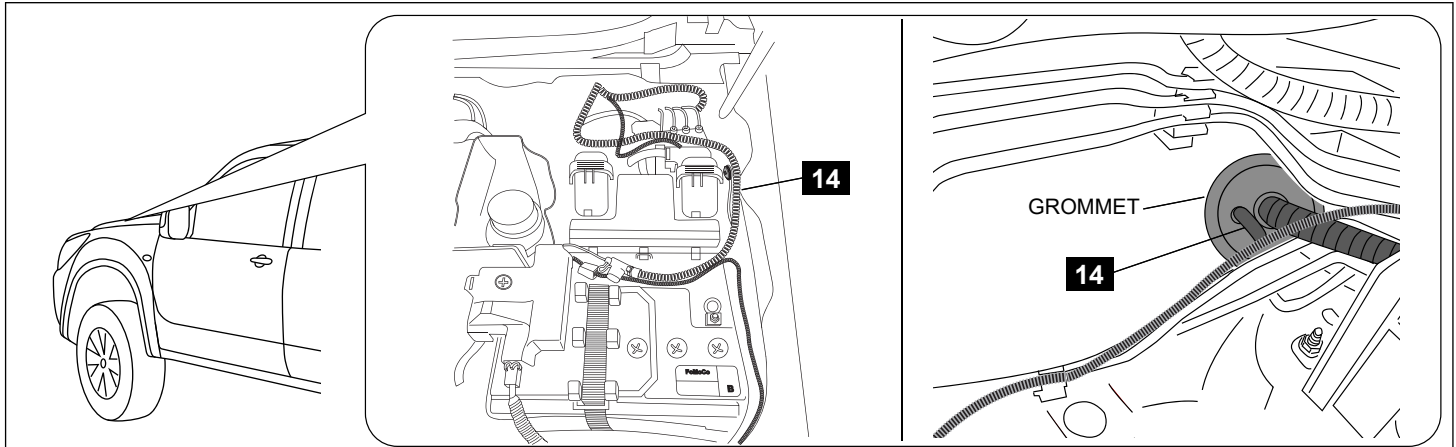
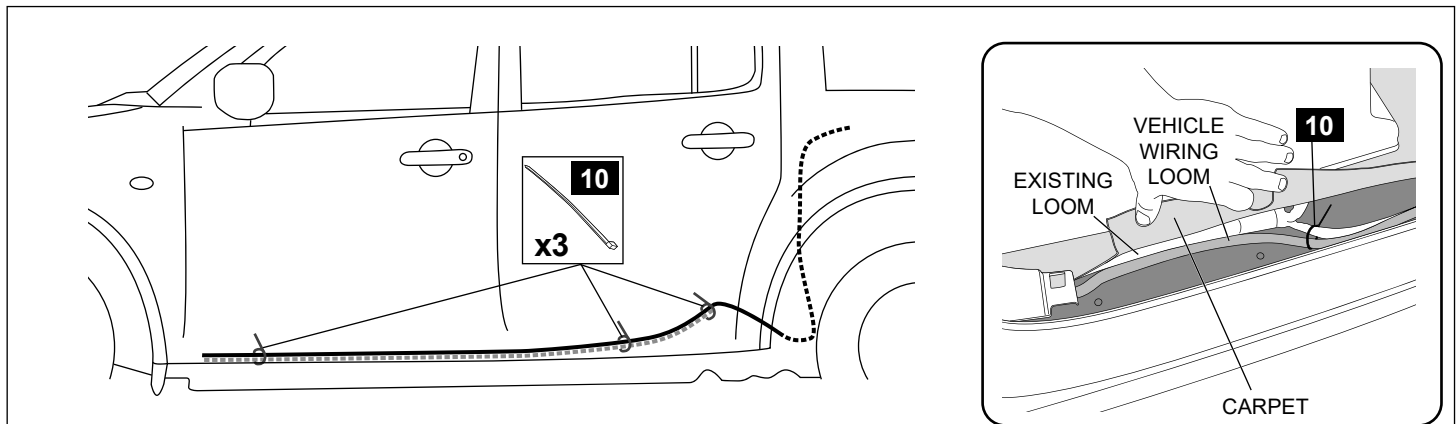


Diagram #:17

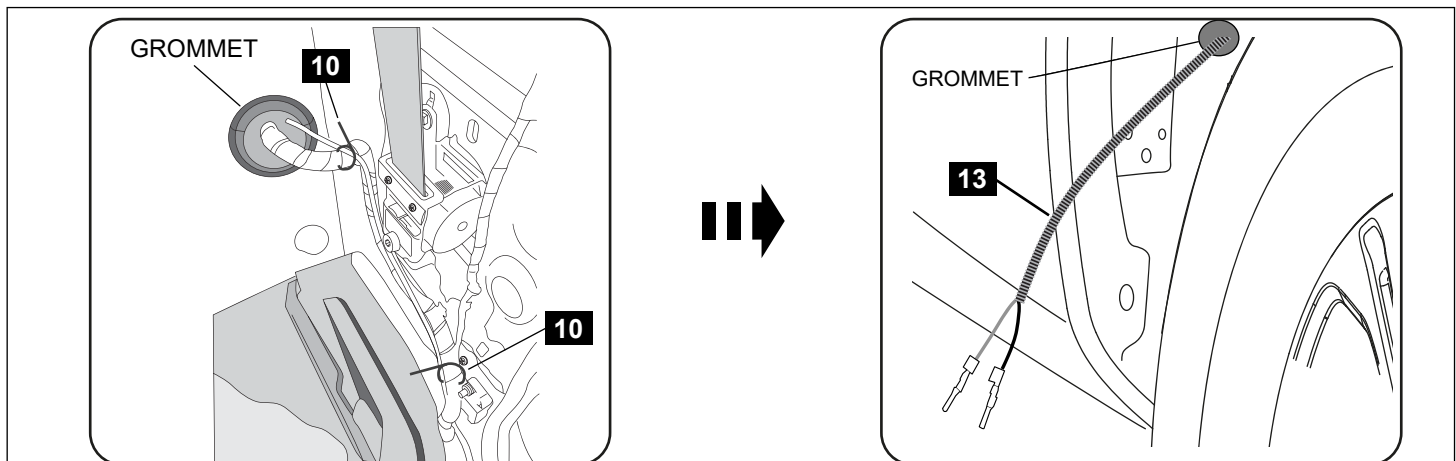
17. Feed the draw wire through the front top corner inside the tub and down into the fuel filler cavity. Use the draw wire to pull the 4-pin connector end of the harness into the tub.

**Diagram #:18**

18. Take the longer vehicle harness and route the harness from the battery to the engine bay firewall grommet. do NOT connect the harness to the battery at this time. Feed the harness (two loose terminal ends) through the firewall grommet into the cabin. Use draw wire if necessary.

**Diagram #:19**

19. Rout the harness through the cabin along the LHS door channel. Route the harness under the B pillar to the C pillar. Follow the existing harness to the rear grommet. Secure the harness with 3 cable ties to the existing vehicle harness.

**Diagram #:20**

20. Using a draw wire pull the harness through the rear grommet and into the tub cavity underneath the fuel filler, where the shorter vehicle side harness is now located. Feed the corrugated tube section back over the length of harness that is now exposed outside the cabin.

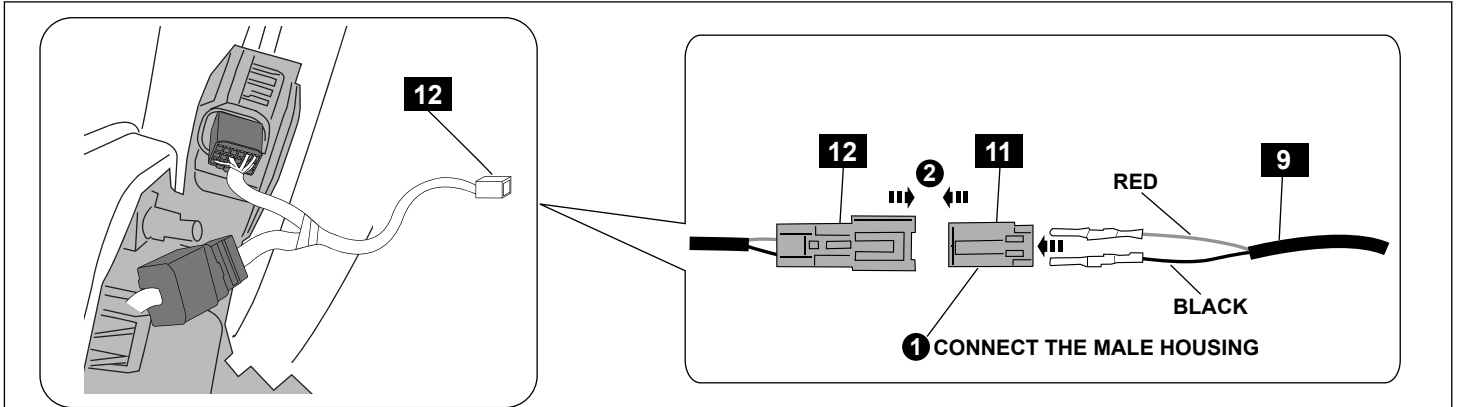


Diagram #:21

21. Attach the loose 2-pin connector to the two exposed terminals. Ensure the red/black wires on the longer harness align with the red/black wires in the connector on the shorter vehicle side harness. Connect the two vehicle side harnesses using the 2-pin connectors. Secure harness to the vehicle harness using 2 cable ties.

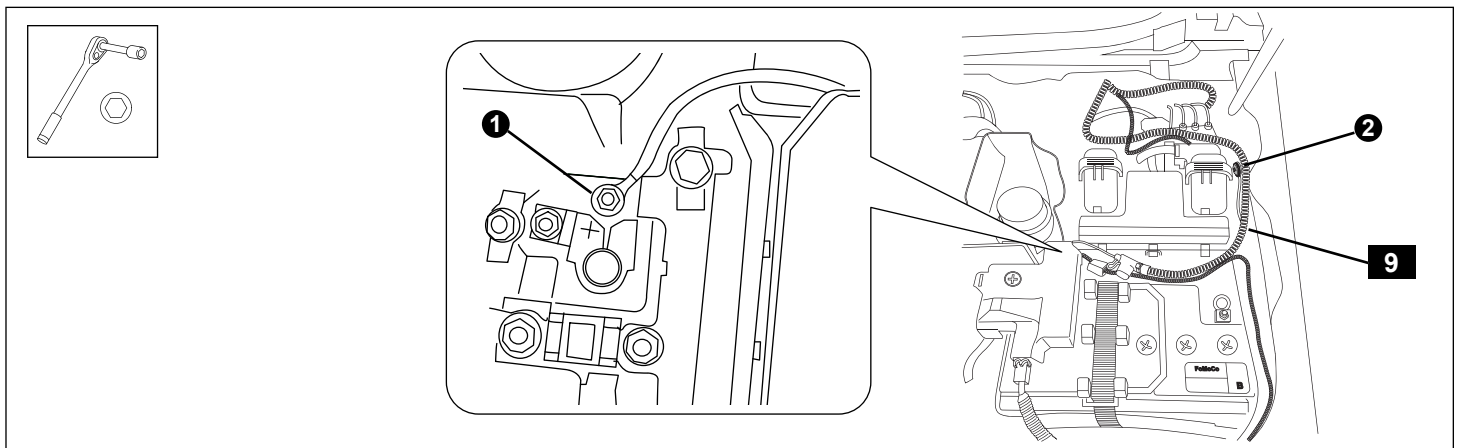


Diagram #:22

22. In the engine bay mount the earth ring terminal under the wall stud and nut shown. The harness must be earthed to the vehicle body. Attach the harness battery ring terminal and reconnect the battery terminal. Check the HTC lock and unlocking function is synchronised with the vehicle's locking function. Once the function is confirmed, secure the harness with 3 zip ties to the existing harnesses.

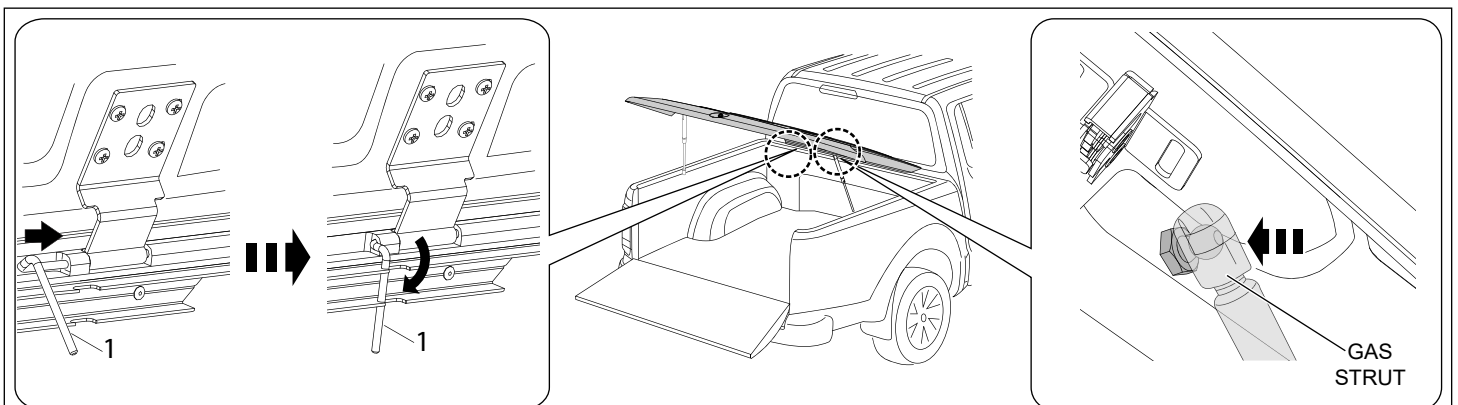


Diagram #:23

23. Refit the tonneau cover and secure with hinge pins. Attach gas struts (already attached to the vehicle) to the tonneau cover by clipping into place as shown.

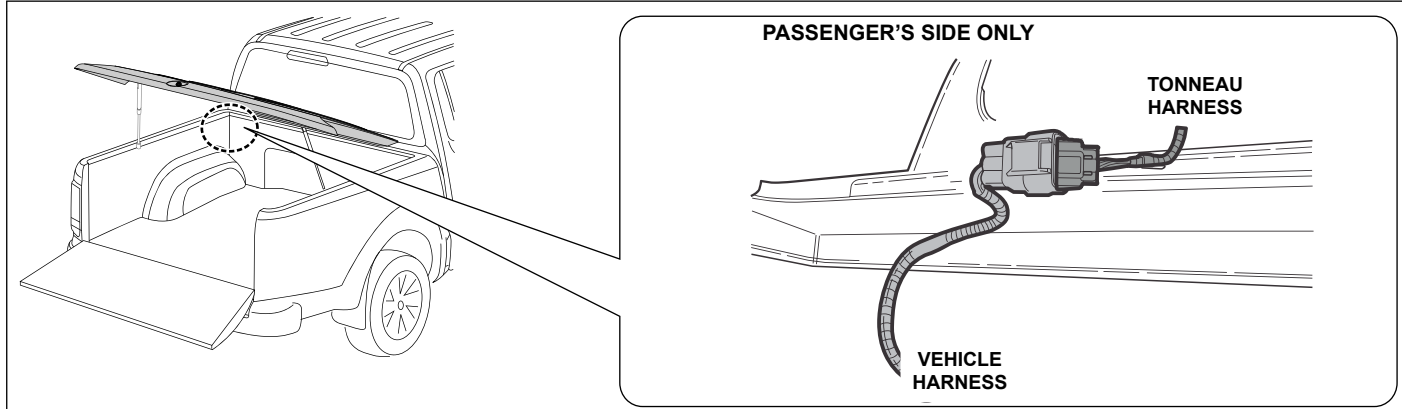


Diagram #:24

24. Connect the vehicle wiring loom to the tonneau wiring loom via the connectors located at the front of the tub as shown.

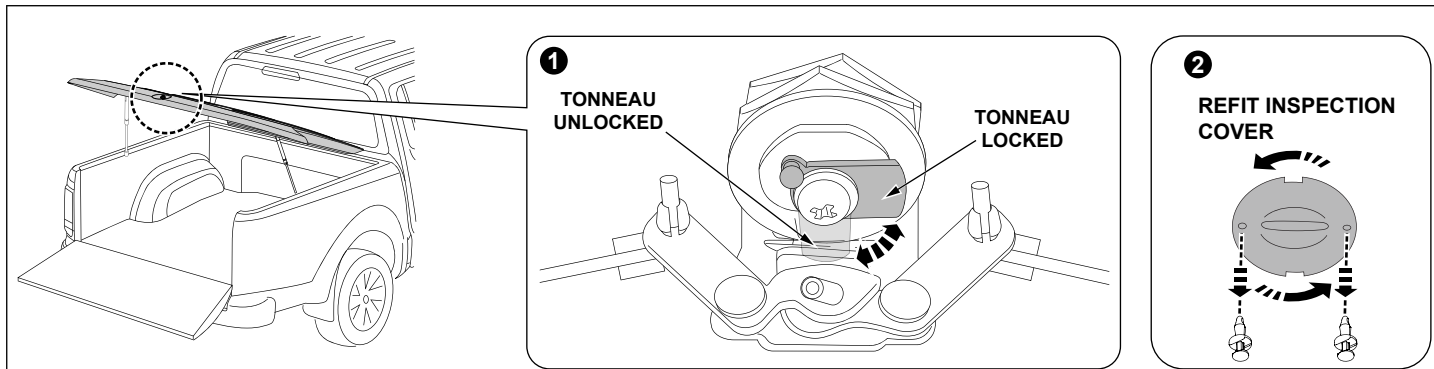


Diagram #:25

25. Manually lock & unlock tonneau using the tonneau key. The key supplied with the hard tonneau cover will over-ride the remote actuator of the lock. In standard conditions, ensure the lock barrel is rotated by the tonneau key to the locked position. The unlocking and locking of the cover will be controlled by pushing the vehicles unlock button on the key fob (that moves a secondary cam). Check operation of central unlocking mechanism by pressing lock and unlock on vehicle's key. Review operation through inspection hole. Test operation of lock mechanism by pressing tonneau's push button after you have pressed lock on vehicle's key, and then again after you have pressed unlock on vehicle's key. Finally, replace the inspection cover.

NOTE: If the tonneau key is used to unlock the cover, ensure to relock the cover using the same key.

Open and close tonneau with tailgate open to check if interior light is functioning correctly. Ensure the light turns on when tonneau is open and turns off when tonneau is closed.

If actuator unlocks when lock button is pressed and vice versa then the wires have been connected the wrong way round.