



Place these instructions in vehicle's glove box after installation is complete

**Care Instructions:**

Clean Tonneau Cover with a mild detergent and water solution.



Do not use abrasive cleaners or solvents.

**WARNING!**

When in the closed position, Aluminium Tonneau Cover must be latched and tailgate must be closed. Failure to do so could result in unexpected opening of the Tonneau Cover from sudden wind gusts or driving conditions, which could cause damage to the vehicle and/or your Aluminium Tonneau Cover.

Secure any items tall enough to strike the Tonneau Cover lock mechanism.

DO NOT close the Tailgate when the Aluminium Tonneau is in the closed position, as damage may occur to the vehicle and/or your Tonneau Cover.

Do not operate vehicle while cover is open.

**MAINTENANCE:**

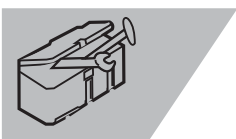
- Avoid the use of chemicals to clean painted surfaces, wash regularly with car wash detergent, hose off and chamois dry. Aluminium top sheet finish can be maintained with british shine polish or similar. Un-maintained product i.e. surface finish degradations not covered by warranty.
- The gas struts are self lubricating and should only be cleaned occasionally with a damp cloth. Premature seal failure will result if solvents or lubricants are used to clean struts.
- Gas struts must be connected with the cylinder (wide) end to the Aluminium Tonneau Cover or Warranty is Void.
- The locking mechanisms and latches only require occasional lubrication with Graphite Powder.
- DO NOT use any other lubricants or oils. Using alternative products will VOID Warranty.
- All installation hardware and fasteners must be checked every so often for tightness.

**TONNEAU COVER - IMPORTANT:**

- Read instructions carefully before installation. It is strongly recommended that installation is conducted by a qualified mechanic.
- This product must be installed exactly as specified in these instructions. Failure to do so may result in improper fit and/or retention.
- Do not stand/sit or rest heavy objects on Tonneau Cover.
- Humans or animals are not to be under the closed Tonneau Cover at any time.
- Securely latch Tonneau Cover before operating vehicle.
- Do not carry open volatile chemicals with Tonneau Cover installed.
- If contact with volatile chemicals occurs clean Tonneau Cover with mild detergent and water solution.
- Recommend installation by 2 people.
- Fitting Instructions must be given to the end customer to understand correct removal and replacement process onto the vehicle.

Tonneau Cover Assembly x1	Hinge Bracket x2	Striker Bracket x2	Striker x2
M10 Nut x8	M10 Washer x8	Gas Strut x2	Ball Stud x4
M8 Lock Nut x4	M8 Washer x2	Gas Strut Bracket x2	M6 Button Head Cap Screw x4
M6 Washer x4	M6 Nut Plate x2	4.8x10 Rivets x23	Tailgate Lock Bracket x2
Foam Pad x1	Header Rail Extrusion x1	Header Rail Seal x1	

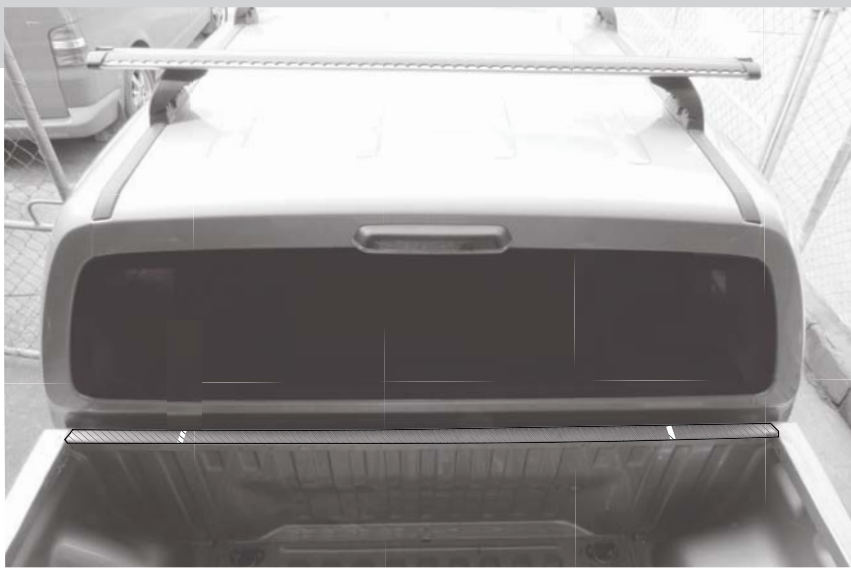
**REQUIRED TOOLS | EQUIPMENT**



- 13mm and 17mm Socket
- ½" Drive Ratchet + Extension Bar
- 8mm, 13mm and 17mm Spanner
- Power Drill
- 5mm Drill Bit
- 8 mm Drill Bit

- 4mm Allen Key
- Rivet Gun
- Tape Measure
- Centre Punch
- Hammer
- Pencil / Marker

- Cleaning Materials
- Masking Tape
- Right Angle
- Rust Inhibitor
- Personal Protective Equipment:  
Safety Glasses, Ear Plugs, Gloves  
(Scissors, Silicone)\* Optional



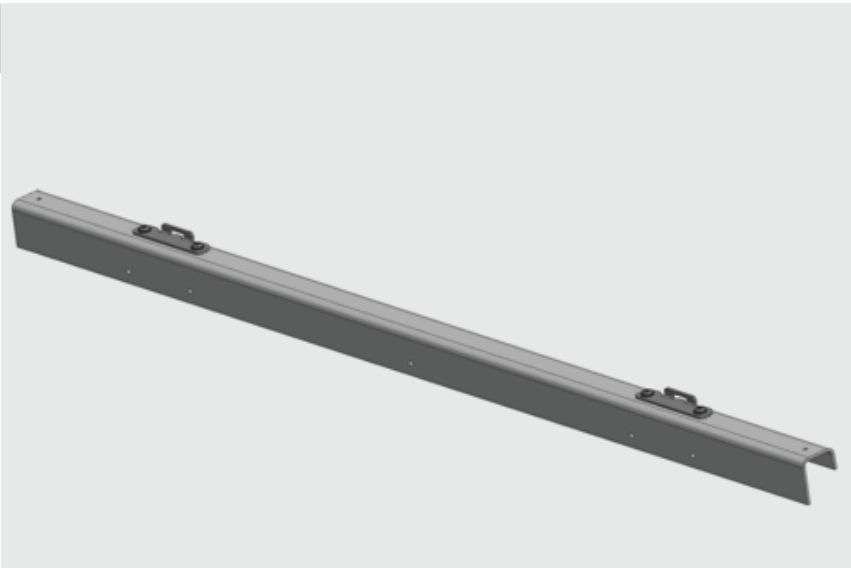
### Step 1

*Required tools: Masking Tape, Marker Pen and Tape Measure.*

1. Clean the top surface of the tub.
2. Apply masking tape on front rail.

*NOTE: This instruction is for plain tub installation only. If tub liner is fitted, the liner will need to be trimmed to allow correct installation of the tonneau cover brackets and hinges. No spacers or additional media allowed between hinges/brackets and the vehicle tub.*

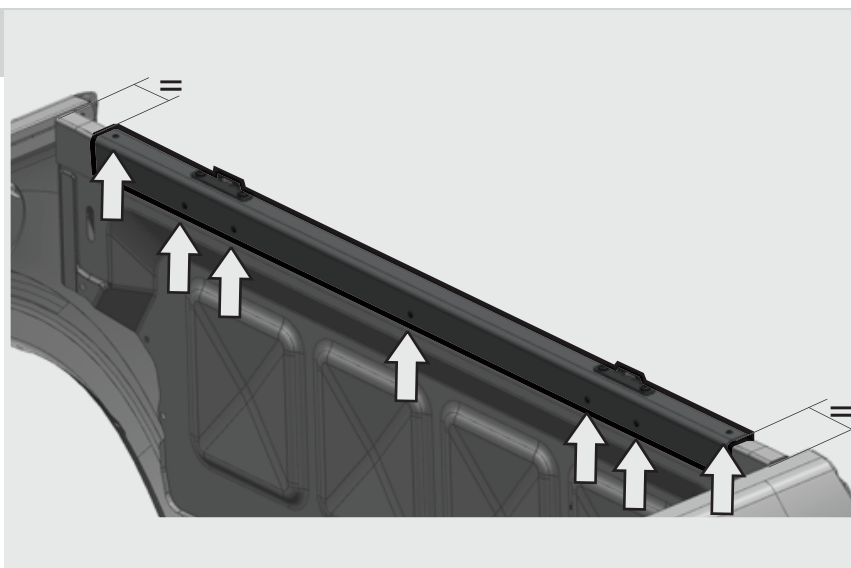
*NOTE: If fitted, cabin guard must be removed.*



### Step 2

*Required tools: -*

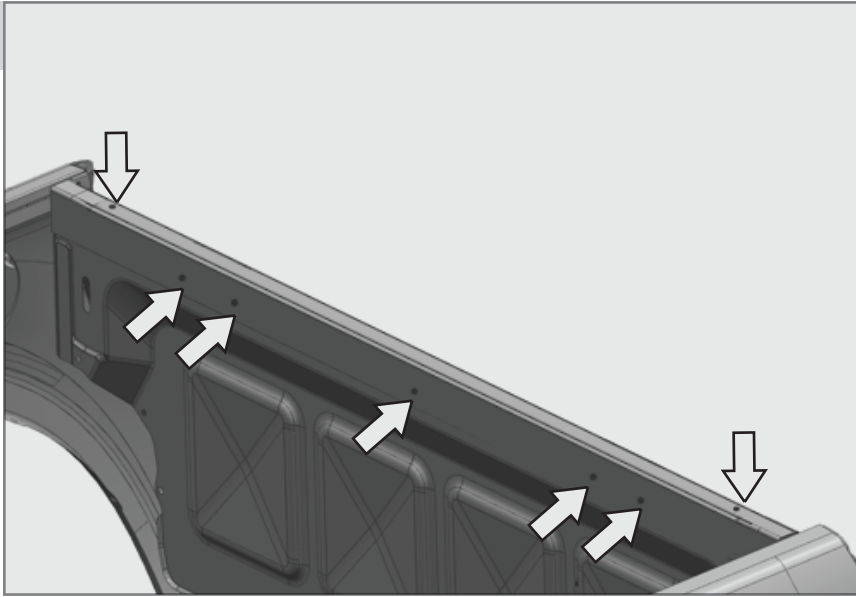
1. Install lower hinge brackets to the header rail extrusion. Do not tighten the bolts.



### Step 3

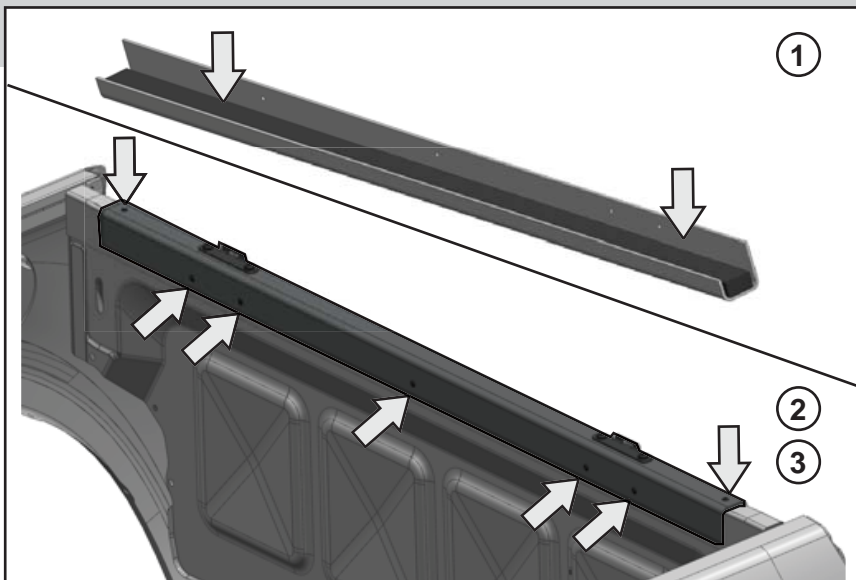
*Required tools: Tape Measure, Marker Pen.*

1. Place the header rail assembly over the tub front rail. Ensure it is located at the centre by taking measurements from each side.
2. Using the header rail as a template, mark 7x hole locations, as indicated.

**Step 4**

*Required tools: Power Drill, 5mm Drill Bit, Centre Punch.*

1. Remove the header rail assembly.
2. Centre punch and drill the previously marked holes through using 5.0mm bit, and remove any drill burr from the holes.
3. Apply rust inhibitor to the drilled holes.

**Step 5**

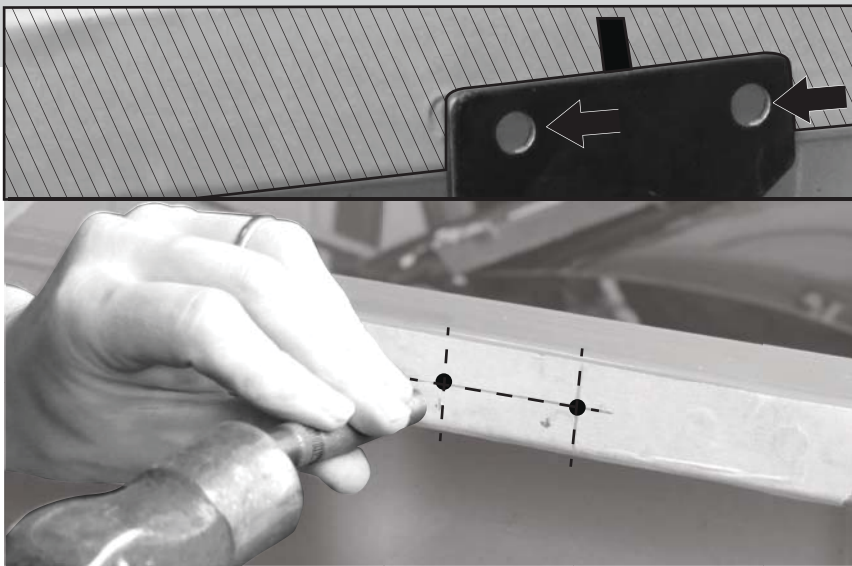
*Required tools: 4mm Allen Key, Rivet Gun.*

1. Install the foam tape to the header rail assembly as shown. Trim any excess.
2. Place the header rail assembly back on the vehicle tub.
3. Install the header rail with supplied 7x rivets.
4. Align both lower hinge brackets equal from the header beam inner surface and tighten the bolts to 10Nm.

**Step 6**

*Required tools: Tape Measure, Marker Pen and Masking Tape.*

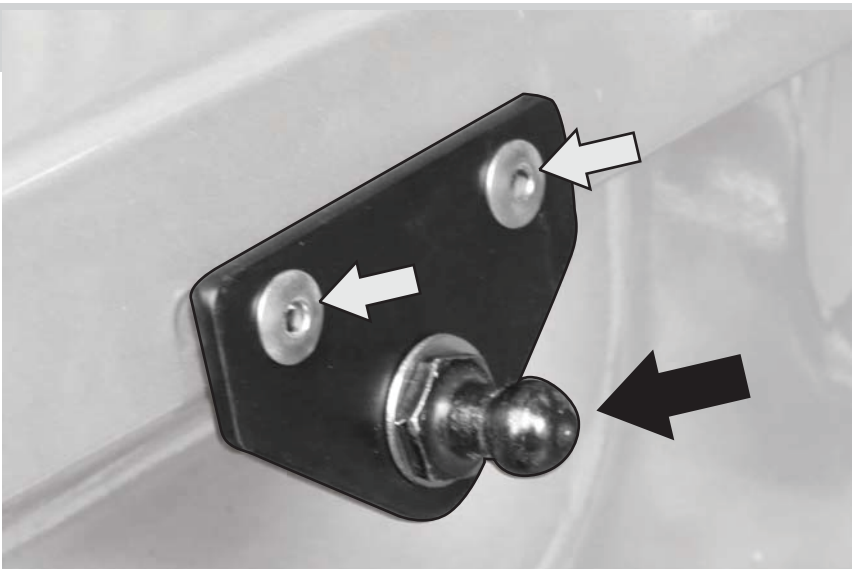
1. Apply masking tape to the side rail inner surface and measure 885.0mm from the front rail inner surface, and mark location.
2. Mark another line 37.0mm from this line, and a line 11.0mm from the side rail bottom edge, crossing both lines.
3. Repeat for both sides.



### Step 7

*Required tools: Centre Punch, Marker Pen, 5mm Drill Bit and Power Drill.*

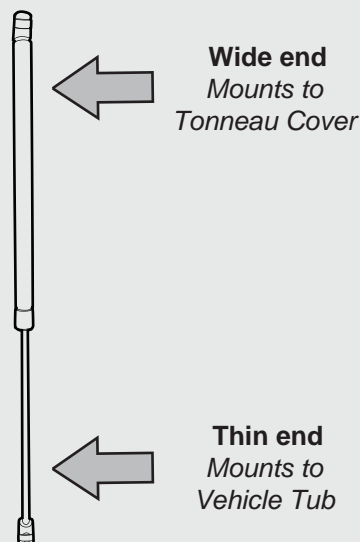
1. Align Gas Strut Bracket with marked lines to confirm hole locations.
2. Mark and centre punch hole locations.
3. Drill holes through using 5.0mm drill bit, and remove any drill burr from holes.
4. Repeat for both sides.
5. Apply rust inhibitor to the drilled holes.



### Step 8

*Required tools: Rivet gun, 13mm spanner and 13mm socket and driver.*

1. Install the gas strut bracket with supplied rivets.
2. Install the pivot end ball to the bracket and tighten it to 20.0 Nm



### Step 9

*Required tools: 13mm spanner, 13mm socket and driver*

1. Install the ball stud with supplied nut and washer in the middle hole of the Tonneau. (Ball Stud to outside)
2. Repeat for other side.
3. Connect both gas struts by pressing it's end into the ball studs.

*NOTE: Note, the opening height of the tonneau cover can be adjusted by fixing the ball studs in either holes illustrated.*

*NOTE: Ensure the gas strut is installed in the correct orientation as shown. The wide end connects to the Tonneau cover.*

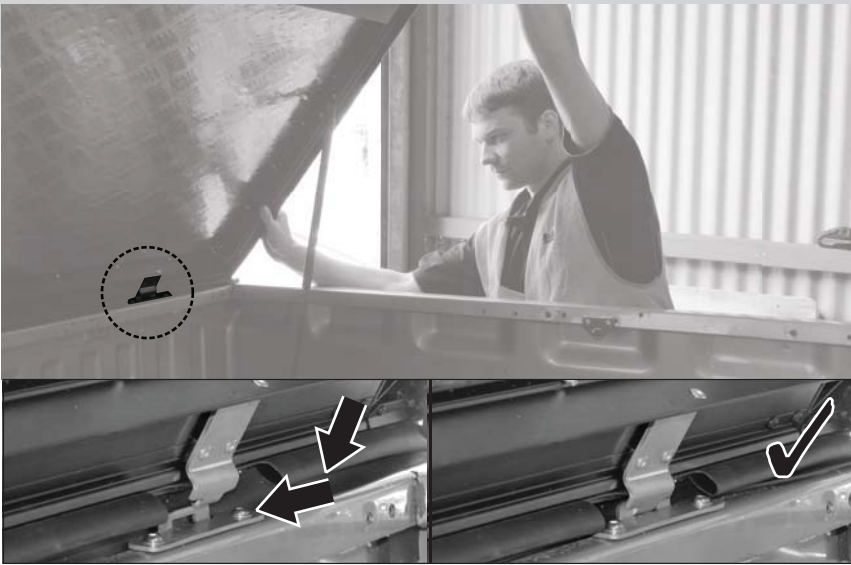
**Step 10**

*Required tools: -*

1. Install the cover by letting the hinge tongue to rest on front of the hinge groove while holding the cover in a 60° angle.
2. Move the cover toward the vehicle cabin to slide the tongue to the groove, ensure hinge parts fully engage.

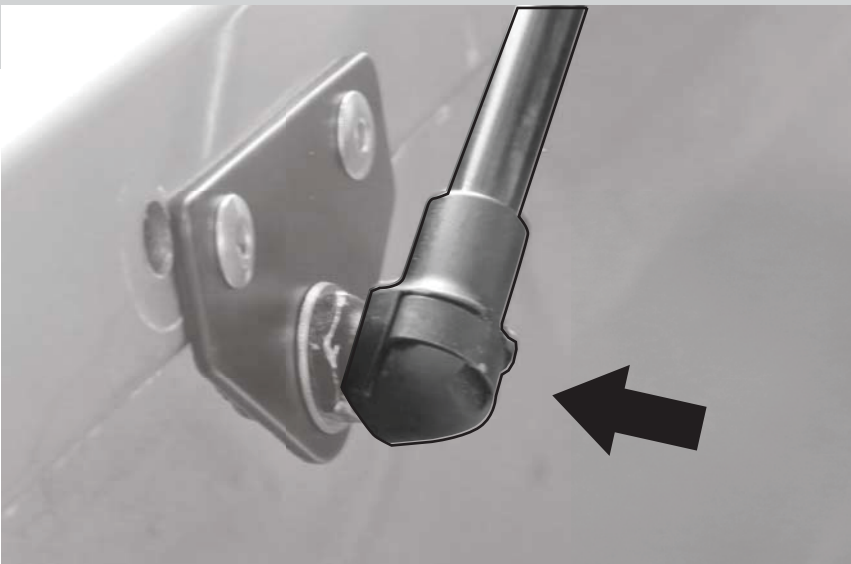
**DO NOT LOWER THE COVER YET.**

*NOTE: When lowering the cover, ensure the front seal is not crushed between the front rail and the cover.*

**Step 11**

*Required tools: -*

1. While holding the cover up, insert the gas strut ends the brackets, by firmly pushing them in.

**Step 12**

*Required tools: -*

1. Close the cover by pulling from the handle and slowly close it while checking that the cover is correctly lined up to the tub and the latch mechanisms are not touching the tub's side rails.
2. Once confirmed the cover is lined up correctly, leave it fully open.

*NOTE: If the cover does not line up correctly, move hinge parts mounted to the front rail forward or backward, one at the time.*

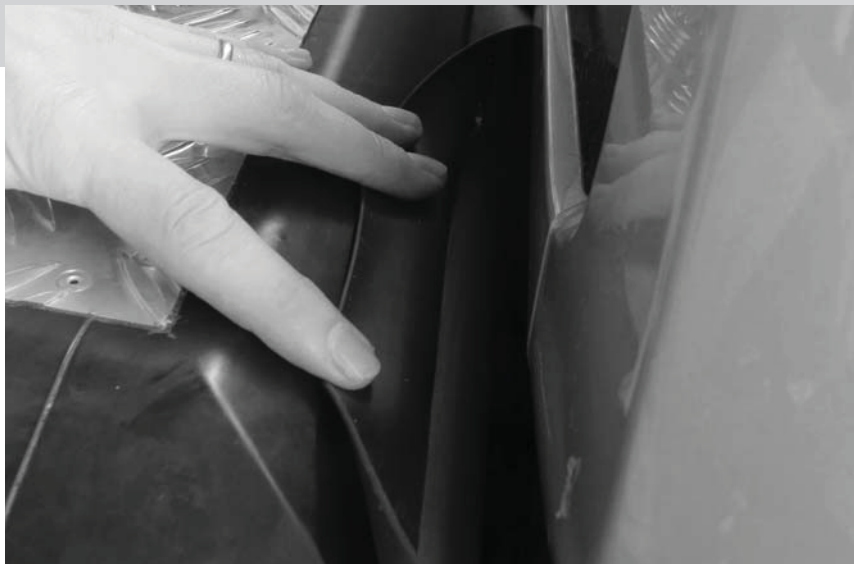


**Step 13**

*Required tools: 8mm Spanner.*

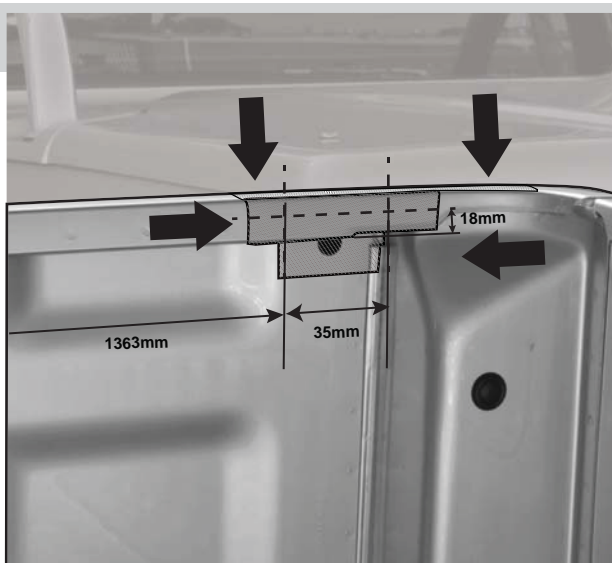
1. While the cover is open and tailgate is open. Press the latch rotor to closed position, both sides.
2. Rotate the handle slowly to clock-wise, ensure both latches disengage at the same time. Adjustment may be required.

*NOTE: Mechanism can be adjusted by tightening or loosening the latch rod M5 nuts from underneath the cover.*

**Step 14**

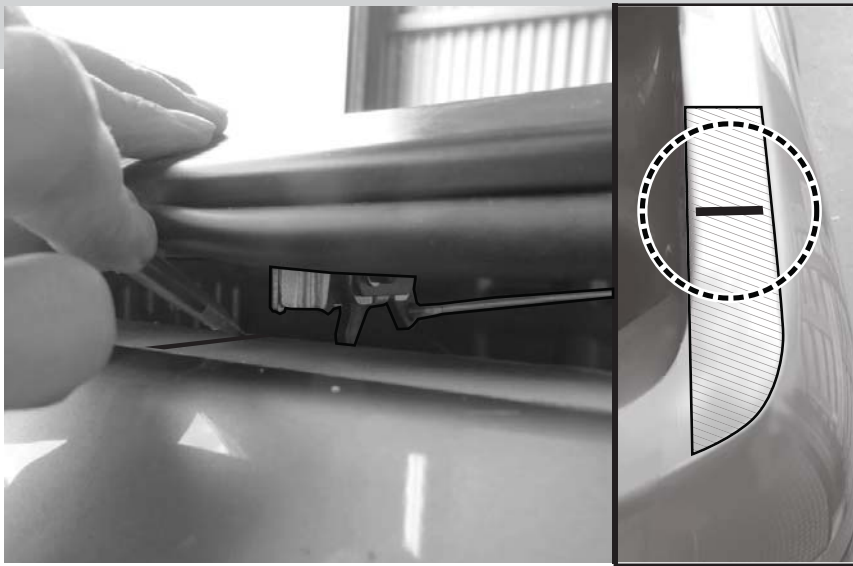
*Required tools: -*

1. While the cover is open, check the front seal's lip is not trapped between the cover and the front rails by bending it up.

**Step 15**

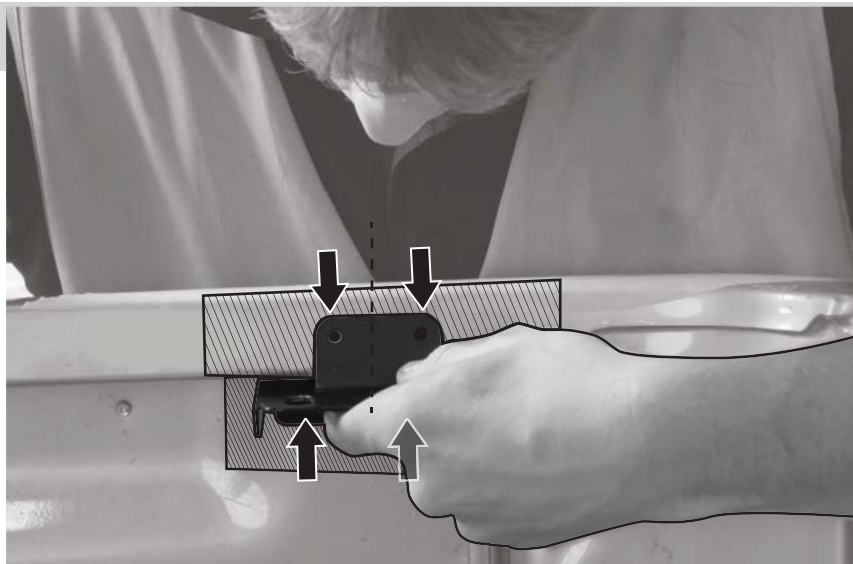
*Required tools: Masking Tape, Marker Pen, and Tape Measure.*

1. Apply masking tape to the rear section of the side rails and side wall below.
2. Using tape measure, marks line 1363.0 mm from the front rail inner surface.
3. Mark another line 35.0 mm, towards the tailgate.
4. Mark one more line 18.0 mm from the side rail bottom edge, crossing two previously marked lines.

**Step 16**

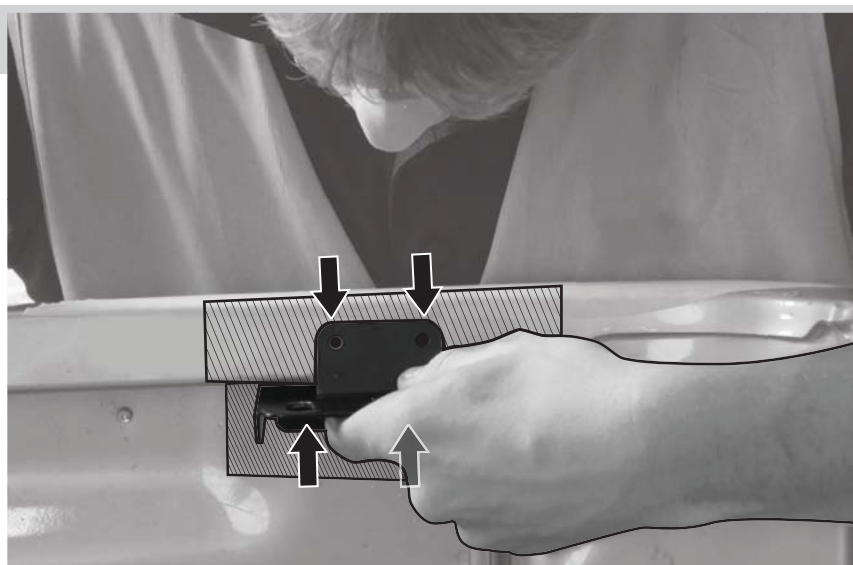
*Required tools: Marker Pen*

1. Lower the tonneau cover. Mark the centre of the tonneau cover latch on the masking tape on the top surface of the side rail.

**Step 17**

*Required tools: Marker pen.*

1. Take the striker bracket and line up the top holes with marked location in the side rail.
2. Mark up the bottom hole location, using the bracket as template.
3. Repeat for other side.
4. Ensure bracket top surface is horizontal and that the line marked in step 15 lines up with the centre of the bracket.

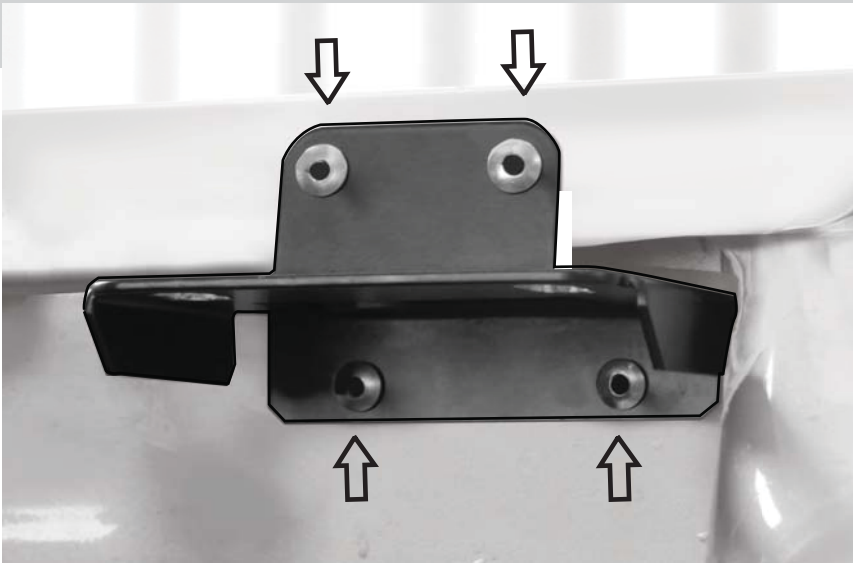
**Step 18**

*Required tools: Power drill, 5mm drill bit and drill bit stopper, centre punch, hammer.*

1. Remove the bracket, take centre punch and centre punch the hole locations, 4x per side.
2. Using 5.0 mm drill bit, drill the holes, only through the first layer of steel. Remove any drill burr from the holes.
3. Repeat for other side.
4. Apply rust inhibitor to the drilled holes.

*NOTE: Use drill stopper to avoid drilling too deep.*

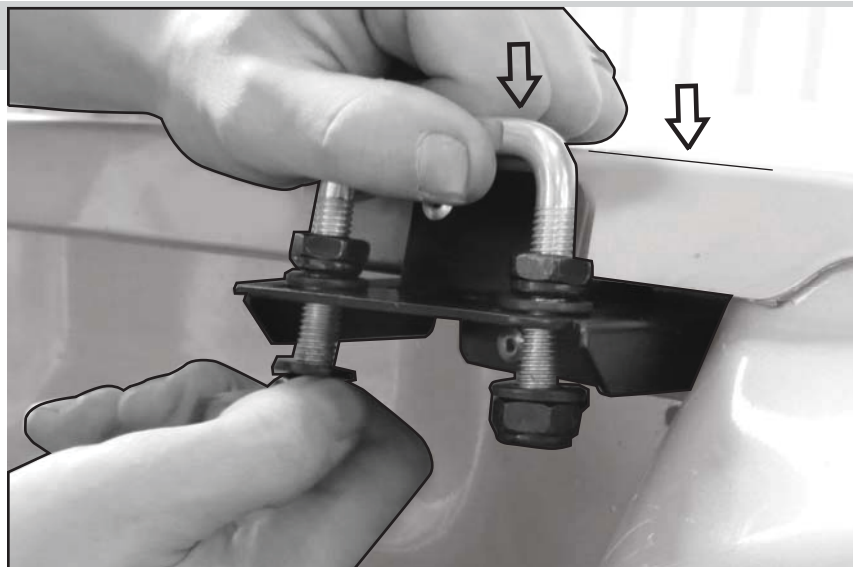




### Step 19

*Required tools: Rivet gun.*

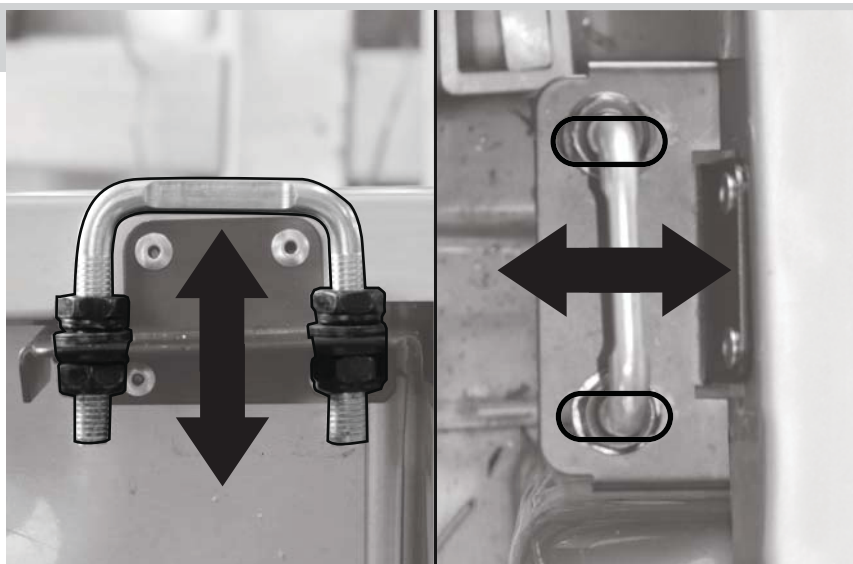
1. Install the bracket using supplied rivets.



### Step 20

*Required tools: 17mm spanner, 17mm socket and driver.*

1. Install the striker to the striker bracket using supplied hardware.
2. The striker should line up with the top surface of the side rails, fine adjustment required.



### Step 21

*Required tools: -*

**NOTE: Do Not Close the tailgate.**

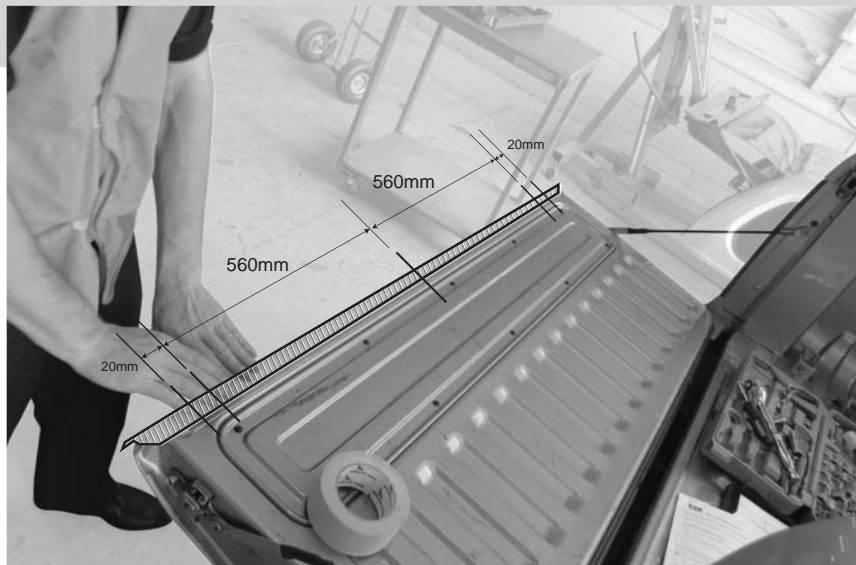
1. Slowly close the cover and move the striker sideways to line it up with the latches. Ensure both sides are lined correctly.
2. Adjust the striker height correct by first closing the cover and measuring the gap between the cover and side rails top surface. The gap should be 9.0 mm at the rear, adjust strikers accordingly.
3. Tighten the striker nuts to 30.0Nm.



### Step 22 (Optional)

*Required tools: -*

*NOTE: Tailgate locking brackets are included for added security, if you do already have tailgate lock installed or do not require this feature, please go to step 27.*



### Step 23 (Optional)

*Required tools: Masking tape, marker pen, and tape measure.*

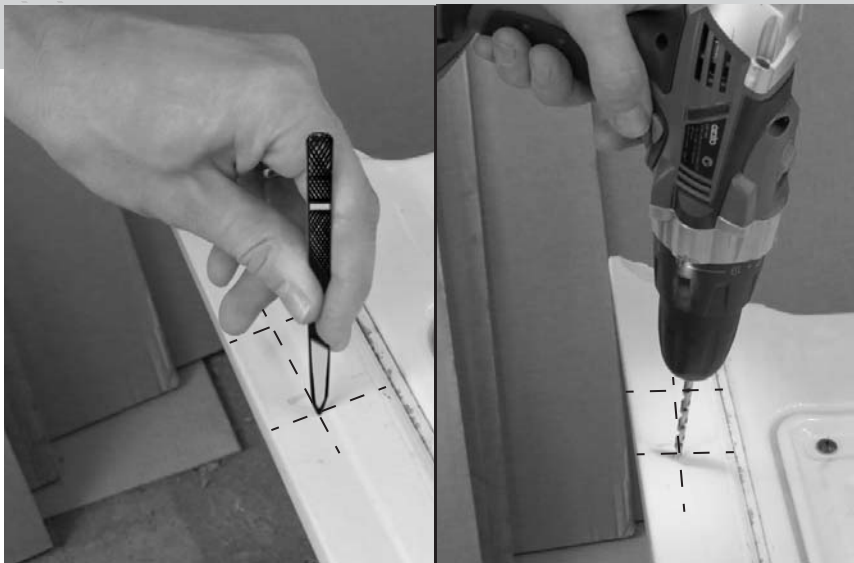
1. Apply masking tape on both corner of the tailgate top surface and first 30 mm of inner surface.
2. Mark a centre line accurately. Mark lines 560.0mm from the centre line to both sides.
3. Mark another line 20.0 mm outboard from this line.



### Step 24 (Optional)

*Required tools: Marker Pen.*

1. Align tailgate lock bracket with marked lines to confirm hole location.
2. Use the other bracket to create a gap between the tailgate top surface and tailgate lock bracket. as shown. Mark the centre of the two holes.
3. Repeat for the other side.

**Step 25 (Optional)**

*Required tools: Centre punch, hammer, drill, 5mm drill bit, drill bit stopper.*

1. Centre punch the hole locations (4x)
2. Drill holes using a 5.0 mm drill bit and drill stopper.
3. Remove drill burr from the holes.
4. Apply rust inhibitor to the drilled holes.

**Step 26 (Optional)**

*Required tools: Rivet gun.*

1. Install the tailgate lock brackets with supplied rivets.

**Step 27**

*Required tools: -*

1. Ensure all the parts are correctly installed.
2. Open the tailgate.
3. Close the cover slowly and ensure locking mechanism functions correctly.
4. Repeat step 3 ten times.
5. Fully open the cover.
6. Close the tailgate.
7. Close the cover again slowly ensuring the tailgate lock brackets are lined up correctly (if installed) and the cover closes fully.

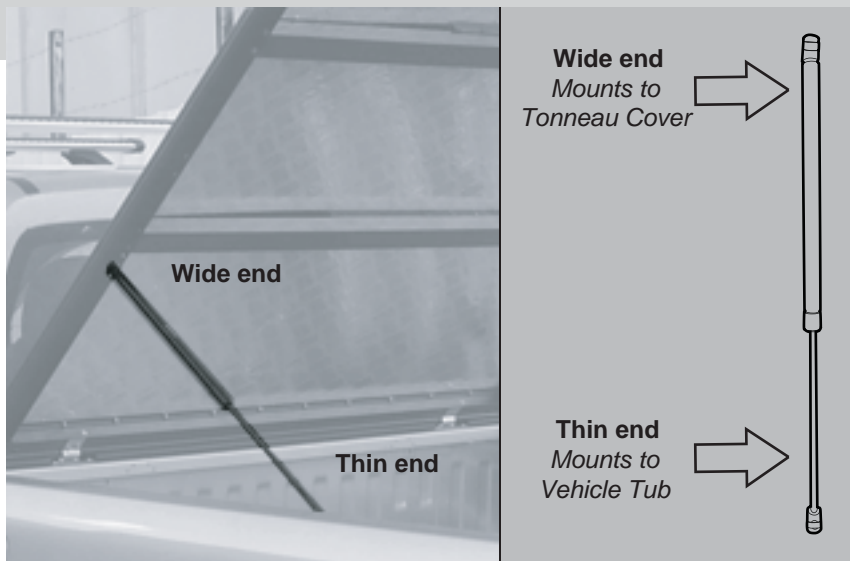
*NOTE: Ensure the keys do not get locked inside the tub.*

**Step 28**

Required tools: -

1. Ensure the gas strut is installed in the correct orientation as shown. The wide end connects to the Tonneau cover.

*NOTE: Incorrect installation of gas strut will void Tonneau Cover warranty.*

**Step 29**

Required tools: Scissors.

1. Use supplied foam seal to improve weather resistance of the tub when required. Silicone may be applied to seal smaller gaps.

*NOTE: Common area of water ingress is the seam between the side and front panels.*

