


Fitting

INSTRUCTIONS



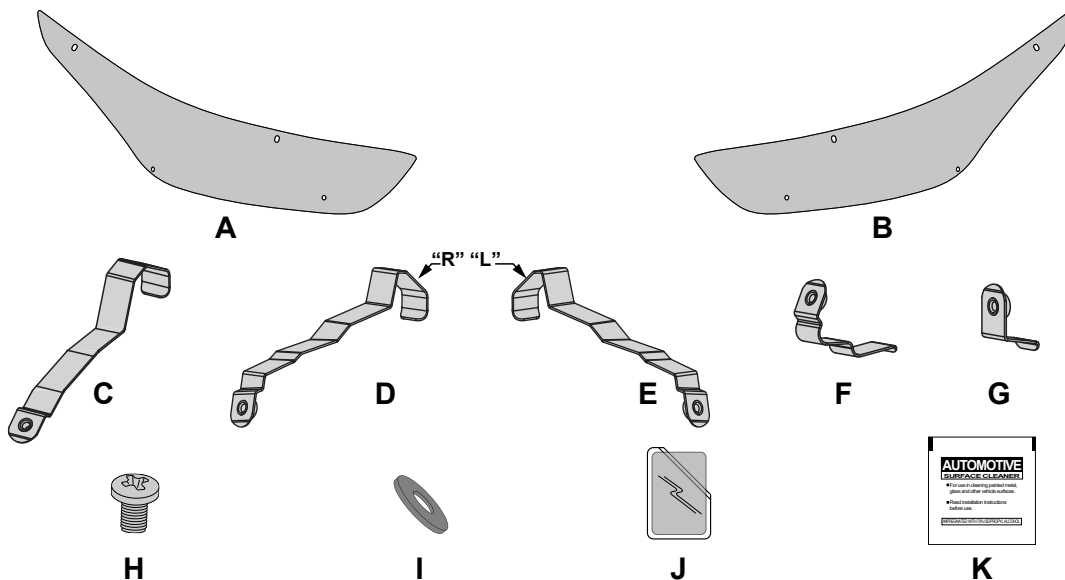
| | | |
|-------------|------------------------|--|
| PRODUCT | Headlight Protector |  20 MIN |
| APPLICATION | Toyota Kluger - 2021 | |
| PART NO | HLP-PPCK-TOY-KLUGER-21 | DATE – 25 MARCH 2022 |

VERY IMPORTANT

- PLEASE READ THESE INSTRUCTIONS CAREFULLY BEFORE COMMENCING WITH FITMENT.
- ENSURE EACH STEP IS CHECKED AND TICKED OFF BEFORE MOVING ON TO THE NEXT STEP.

KIT CONTENTS

| Item | Qty | Description | Item | Qty | Description |
|------|-----|---------------------------|------|-----|-------------------------|
| A | 1 | Headlight Protector "RHS" | G | 2 | Bottom Metal Clip Outer |
| B | 1 | Headlight Protector "LHS" | H | 8 | Screw |
| C | 2 | Top Metal Clip Inner | I | 8 | Washer |
| D | 1 | Top Metal Clip Outer "RH" | J | 8 | Anti-Abrasive Tape |
| E | 1 | Top Metal Clip Outer "LH" | K | 1 | Alcohol Wipe |
| F | 2 | Bottom Metal Clip Inner | | | |



REQUIRED TO FIT

1x Bucket with soapy water mix
1x #2 Phillips Head Screwdriver

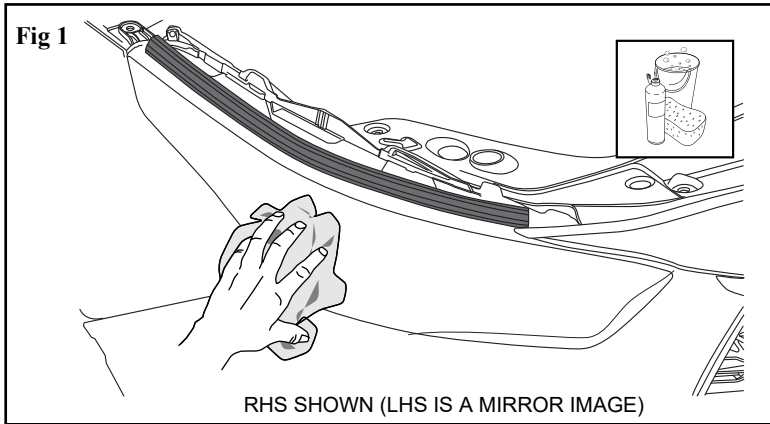
1x Pencil or non-permanent Marker

PRECAUTIONS

Ensure that you adequately cover and protect Seats, Carpets, Body parts as well as Door entry areas with non-scratch covers, before installation. Ensure that your workmanship is of the highest professional standard and that you do not scratch or damage the vehicle or accessory to be fitted.

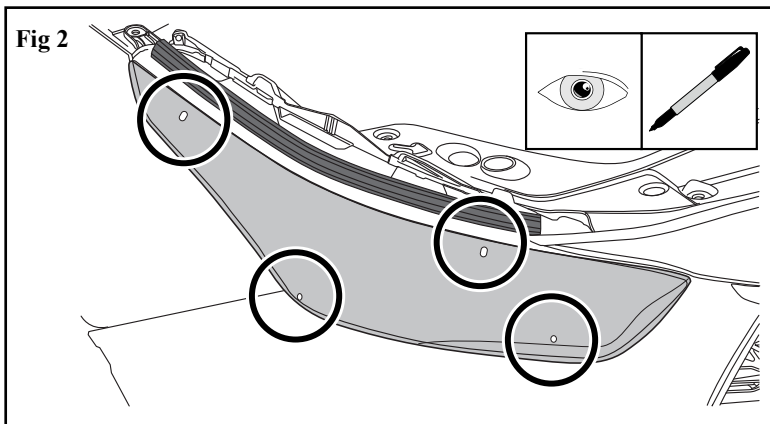
Before commencing with fitment, carefully unwrap the product and ensure that the kit is complete and that the part is free of damage.

INSTALLATION PROCEDURE



Read installation instructions thoroughly before commencing installation.

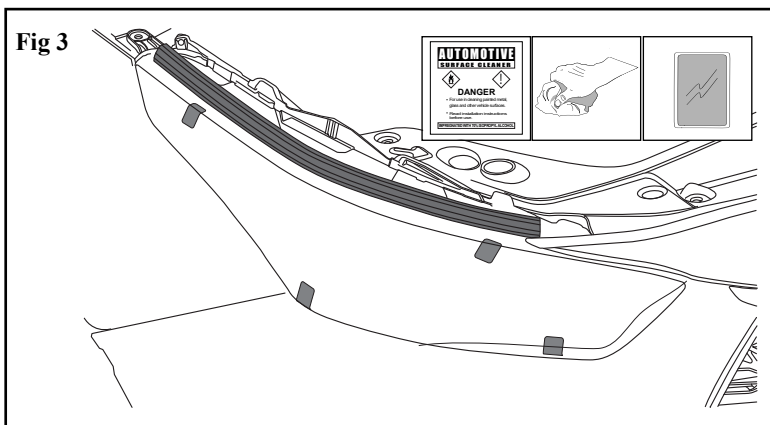
Read installation instructions thoroughly before commencing installation. Open the bonnet and thoroughly clean and dry both headlamps and surrounding areas.



Trial fit the Headlamp Cover centrally on the headlamp.

Note the two slots at the top of the Headlamp Cover and mark these locations onto the headlamp assembly.

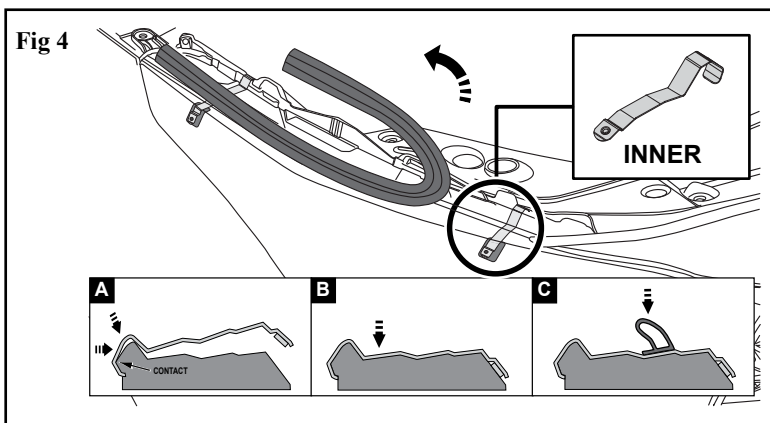
Note the two holes at the bottom of the Headlamp Cover and mark these locations onto the headlamp assembly.



At the previously noted and marked locations, clean the headlamp lens with the alcohol wipe provided. Remove any residue with a clean dry cloth.

Fit the Headlamp Cover centrally on the headlamp, holding it approximately 1-2cm off the headlamp surface.

Adhere the anti-abrasive tapes provided to all slot and hole positions. Approximately two thirds of the anti-abrasive tape should be on the headlight surface.



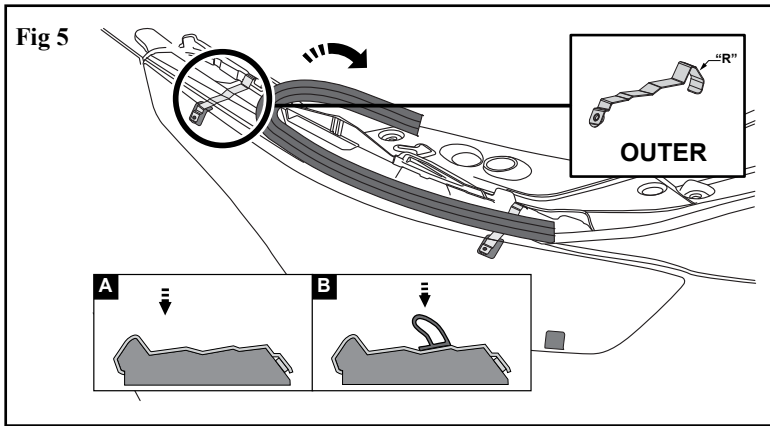
At the previously noted and marked inner top slot position, lift up the rubber seal and fit the top metal inner clip to the top of the headlamp.

- A. Install the clip by hooking it over the headlamp.
- B. Press the clip down over the headlamp.
- C. Press the seal back down over the clip.

Check:

- the clip is flat to the headlamp top profile.
- the clip is engaged to the lamp bucket.
- the metal clip is located on the anti-abrasive tape and not on the headlamp lens.
- the seal sits flat over the clip

INSTALLATION PROCEDURE

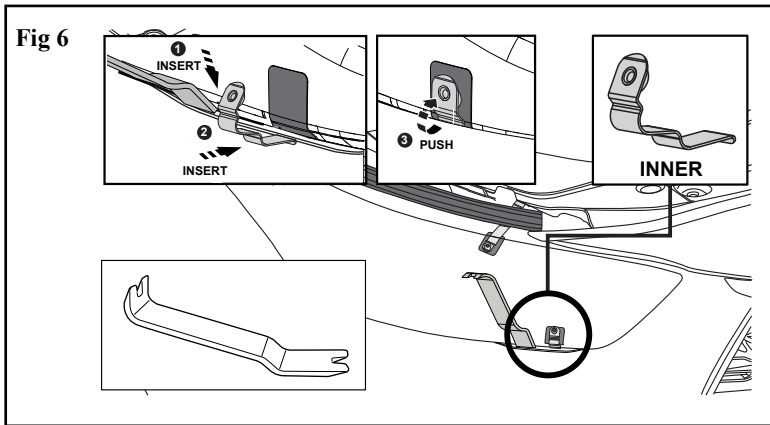


At the previously noted and marked outer top slot position, lift up the rubber seal and fit the top metal outer clip to the top of the headlamp.

- A. Press the clip down over the headlamp.
- B. Press the seal back down over the clip.

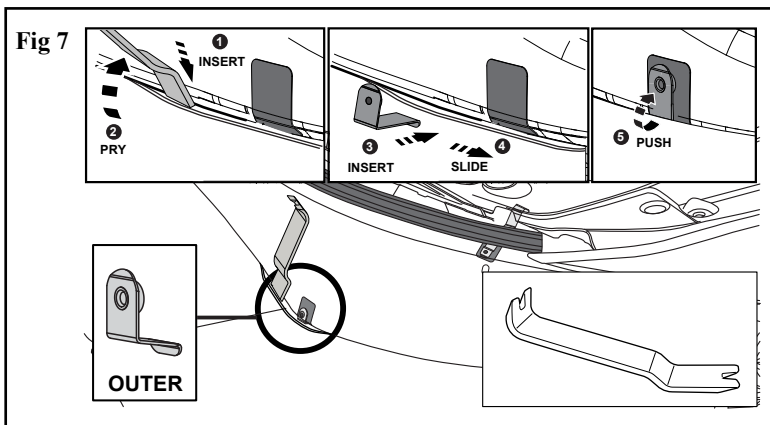
Check:

- the clip is flat to the headlamp top profile.
- the clip is engaged to the lamp bucket.
- the metal clip is located on the anti-abrasive tape and not on the headlamp lens.
- the seal sits flat over the clip



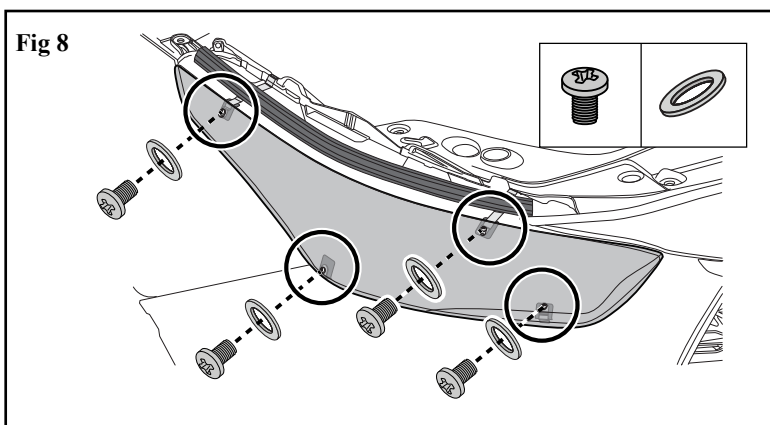
At the previously noted inner bottom hole position, push spreader tool as deep as possible, wedging the lamp and bumper apart, to allow for the clip to be inserted between bumper and headlamp. Fit the inner bottom metal clip between the bumper and headlamp assembly by inserting them over the anti-abrasive tape.

Ensure that the metal clips are located on the anti-abrasive tape and not on the headlamp lens.



At the previously noted outer bottom hole positions, push spreader tool between bumper and headlamp and pry open to allow for clip to be inserted between bumper and headlamp. Fit the outer bottom metal clip between the bumper and headlamp assembly by inserting them slightly outboard as shown. Slide the clips across and push them into position over the abrasive resistant tapes.

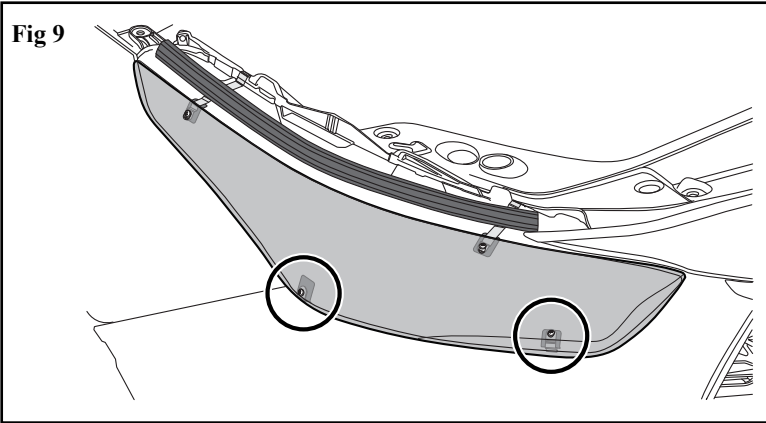
Ensure that the metal clips are located on the anti-abrasive tape and not on the headlamp lens.



Loosely secure the Headlamp Cover to the metal clips with the screws and washers provided.

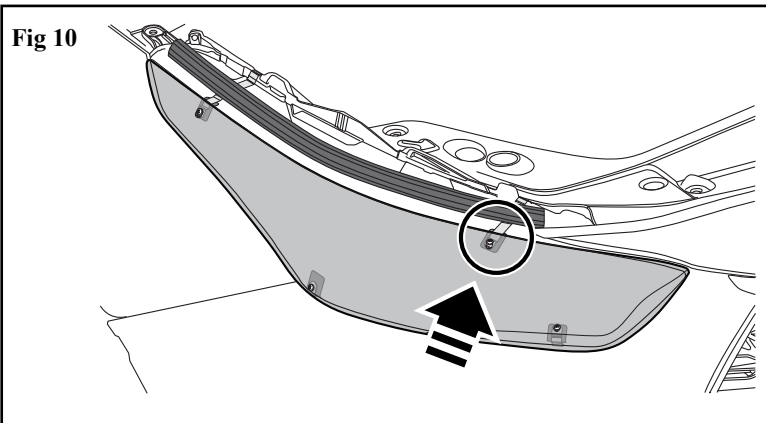
INSTALLATION PROCEDURE

Fig 9



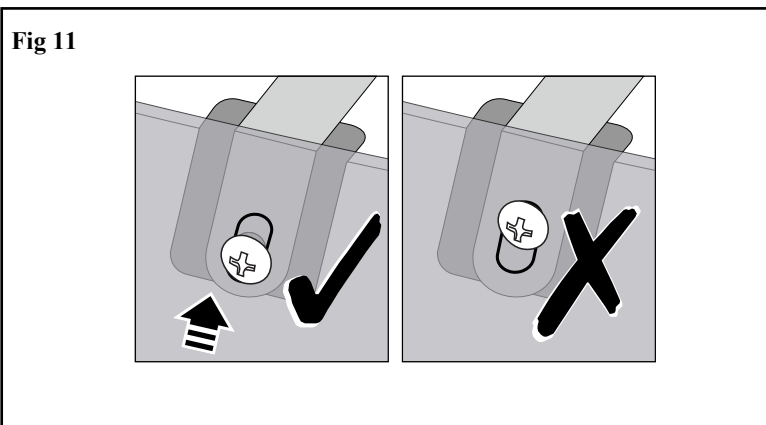
Tighten the bottom screws.

Fig 10



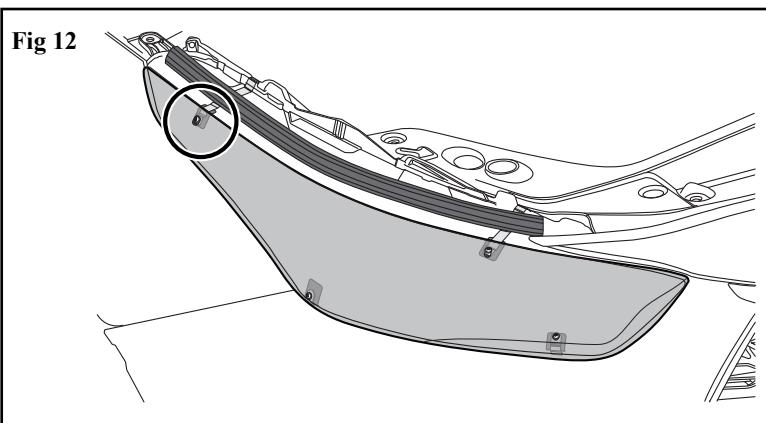
Tighten the screw at the top metal inner location, while applying upwards pressure to the Headlamp Cover.

Fig 11



Ensure the top inner screw is as close to the bottom of the vertical Headlight Protector slot as possible.

Fig 12



Tighten the screw at the top metal outer clip location.

Repeat steps 2-12 for the LHS Headlight Protector.

INSTALLATION PROCEDURE

Re-check that your workmanship has been of the highest professional standard, then clean up the work area and ensure that the vehicle or accessory is not scratched or left dirty. Remove all tools, protective covers, waste materials, grease, dirt or grime from the work area.

Care Instructions:



Clean with a mild detergent and water solution.



Do not use automatic car wash.



Do not use abrasive cleaners.