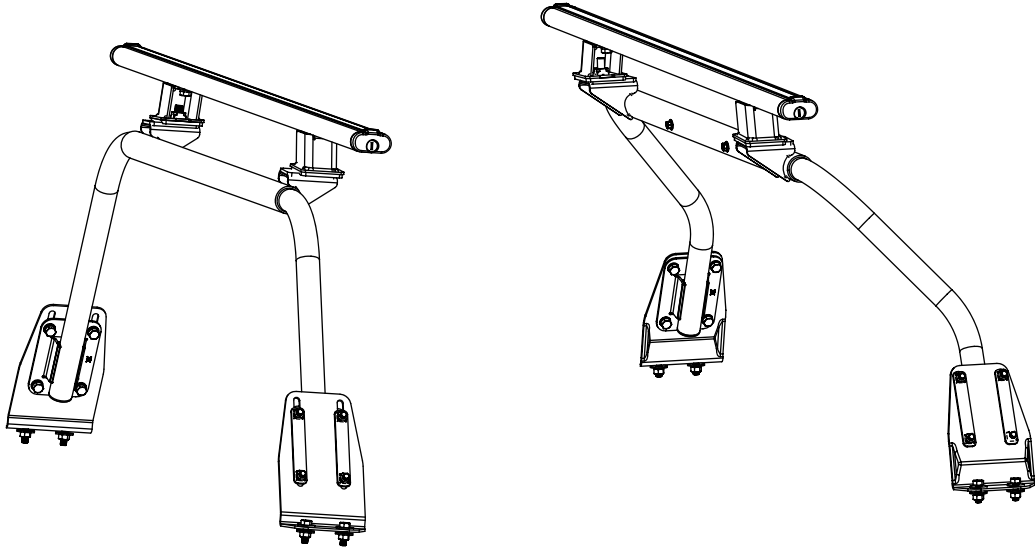


**MITSUBISHI TRITON MQ 2015  
CANOPY ROOF RACK  
INSTALLATION INSTRUCTIONS**



Installation Time: Approx. 90 minutes

<b>Care Instructions:</b>	Clean Roof Racks with a mild detergent and water solution.	Do not use abrasive cleaners or solvents.	<div style="border: 1px solid black; padding: 2px; display: inline-block;"><b>150Kg MAX.</b></div> Roof Racks Maximum Load to be carried <b>150Kg</b>
---------------------------	--	---	---

**Place these instructions in vehicle's glove box after installation is complete**

**PLEASE REFER TO PAGE 3, OF THIS INSTRUCTION FOR A LIST OF PARTS AND QUANTITIES.**

**IMPORTANT!**

- Read instructions carefully before installation.
- It is strongly recommended that installation is conducted by an authorised dealer.
- This product must be installed exactly as specified in these instructions. Failure to do so may result in improper fit and/or retention.
- Recommend installation by 2 people.

**RECOMMENDED TOOL LIST - (Not Supplied in Kit)**

 <b>Non Acetic Silicon (Neutral Cure)</b>	 <b>Silicon Dispensing Gun</b>	 <b>Cleaning Cloths / Rags</b>	 <b>Ø20mm Hole Saw</b>	 <b>Torque Wrench 0-35Nm</b>	 <b>Socket Driver and sockets: 13 &amp; 16mm</b>
 <b>Spanners: 13 &amp; 16mm</b>	 <b>File/De-burring Tool</b>	 <b>Steel Rule and Tape Measure</b>	 <b>10mm Socket Drive Drill Attachment (for 14G Tek Screw)</b>	 <b>Power Drill and drill bits: Ø3mm, Ø9mm</b>	 <b>Loctite 243</b>



### **SAFETY WARNING!**

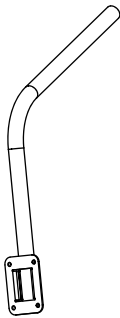
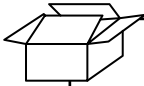
- Total Load to be carried on Roof Rack system is 150kg Maximum for on-road and off-road driving.
- Loads must be distributed as evenly as possible across Roof Rack system, and the loads centre of gravity to be kept as low as possible. Narrow and Heavy loads (example: metal tubes) must be positioned over or near the Roof Rack Mounting Brackets attached to the vehicle roof.
- Loads that over-hang the ends of the Roof Racks must conform to any relevant laws and must be adequately secured.
- All loads must be firmly and independently secured, to both Front and Rear Roof Rack Extrusions.
- Loads must be secured using suitable straps or similar tightening devices.
- After loading, recheck the security of the load and Roof Racks regularly throughout the journey.
- Elastic straps with securing hooks must not be used.
- Where surfboards are carried (or similar items that may produce high lifting forces), they must not be carried side by side, but stacked one upon the other and secured independently to Front and Rear Roof Rack Extrusions using straps or other methods capable of with-standing the lifting forces.
- Where specialised accessories are available to carry or secure loads (example bicycle carriers), it is recommended that are used, and must be installed correctly.
- The handling characteristics of a vehicle will change when a carrier system (Roof Racks) is fitted, and especially when it is loaded (in particular cross wind sensitivity, handling on bends and braking). Driving techniques should be altered to allow for these changes, reducing speed especially on bends, and allow for longer braking distances.
- Remember that the roof racks increase the overall height of the vehicle.

### **MAINTENANCE**

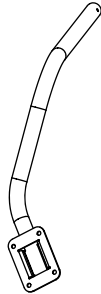
- Do Not use abrasive compounds on painted or plastic surfaces, only use mild detergents & wax polish.
- Roof Racks and any accessories, straps or other tightening devices must be maintained and kept in good working order.
- If Roof racks are removed, all bolts must be re-tightened on refitting to specified values.
- The roof racks should be removed regularly to clean adjoining vehicle surfaces and attachment locations. Bolts and nuts should be lubricated at regular intervals. Tightening torque must be checked to be as indicated at least once every 5000km.
- If bolt torque has loosened too much, apply Loctite 243 or similar prior to re-tightening of the bolts.

### PARTS CHECK SHEET

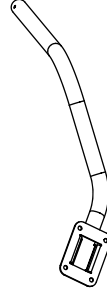
#### PARTS IN MAIN CARTON



Front Tube  
Qty - 2



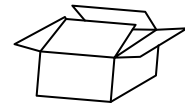
Rear Tube RH  
Qty - 1



Rear Tube LH  
Qty - 1

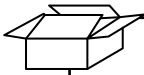


Roof Rack Kit  
Qty - 1

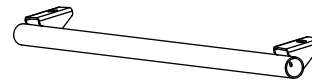


Hardware Kit  
Qty - 1

#### PARTS IN ROOF RACK KIT



Roof Rack Bar with Pedestals  
Qty - 2

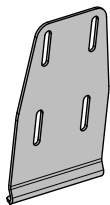
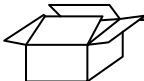


Centre Tube  
Qty - 2

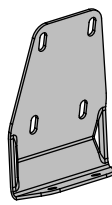


Keys  
Qty - 2

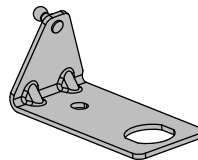
#### PARTS IN HARDWARE KIT



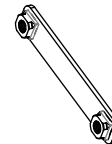
Mounting Bracket (Front)  
Qty - 2



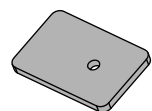
Mount Bracket (Rear)  
Qty - 2



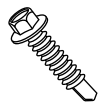
Ball Strut Bracket  
Qty - 4



M8 Nut Plate  
Qty - 8



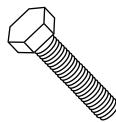
Internal Foam Pad  
Qty - 4



14G Tek Screw  
Qty - 8



Steel Bush  
Qty - 4



M8x25mm  
Hex Head Bolt  
Qty - 24



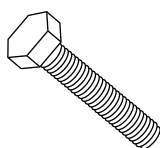
M8 Nut  
Qty - 8



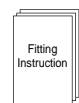
M8 Flat Washer  
Qty - 32



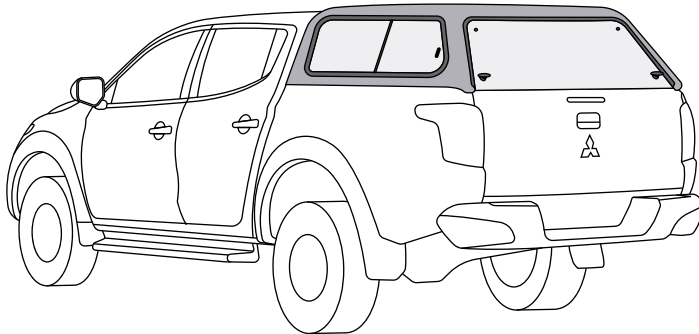
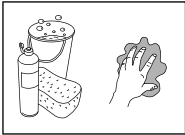
M10 Flat  
Washer  
Qty - 4



M10x40mm  
Hex Head Bolt  
Qty - 4



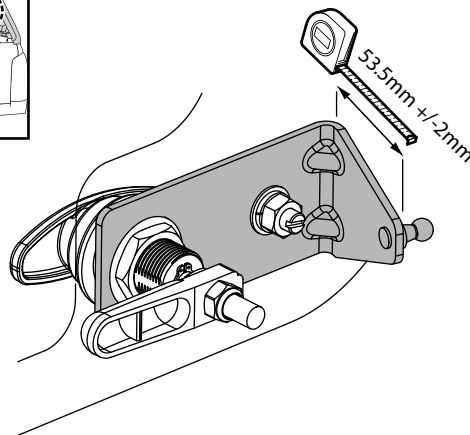
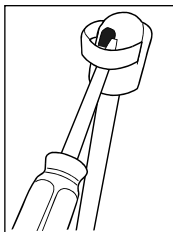
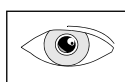
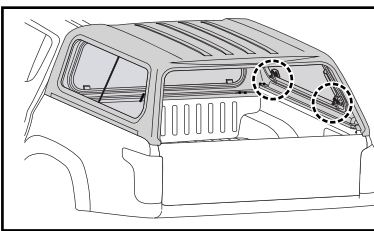
Fitting Instruction  
(CP0244b)  
Qty - 1



**Diagram: 1 - CLEAN INSTALLATION AREAS**

1. Thoroughly clean and dry installation areas (canopy and inside of the tub).

**STEP 2-6 ONLY REQUIRED IF SIDE LIFT WINDOWS ARE FITTED TO CANOPY**



- 2.

**Important:** Please check the side lift window strut bracket length as shown. If it is 53.5mm +/-2mm than precede to step 7.

Remove the strut from the bracket by lifting the spring with a flat screwdriver (do not remove the spring completely).

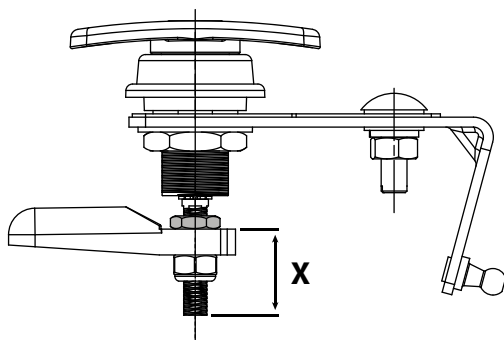
**Diagram: 2 - CHECK BRACKET LENGTH**

3. Measure and record the position "X" of the thin nut, to assist in reinstallation.



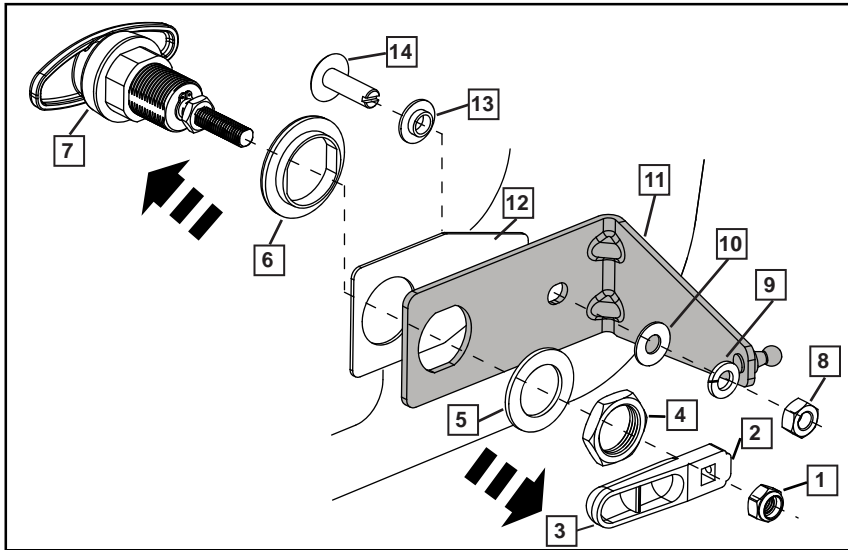
**Note:** DO NOT REMOVE THE THIN NUT BEHIND THE CAM.

**SECTION VIEW**



**Diagram: 3 - NOTE NUT POSITION**

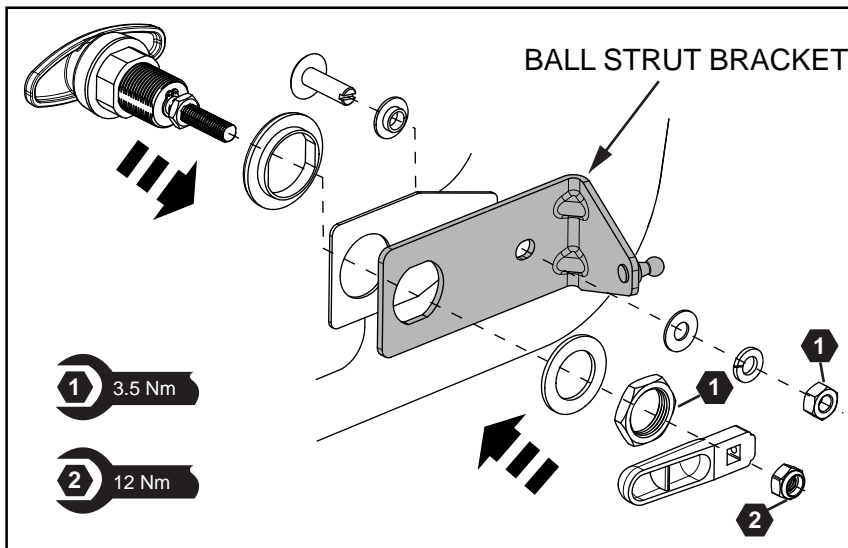
## Mitsubishi Triton 2015 Canopy Roof Rack



**Diagram: 4 - REMOVE OLD BRACKET**

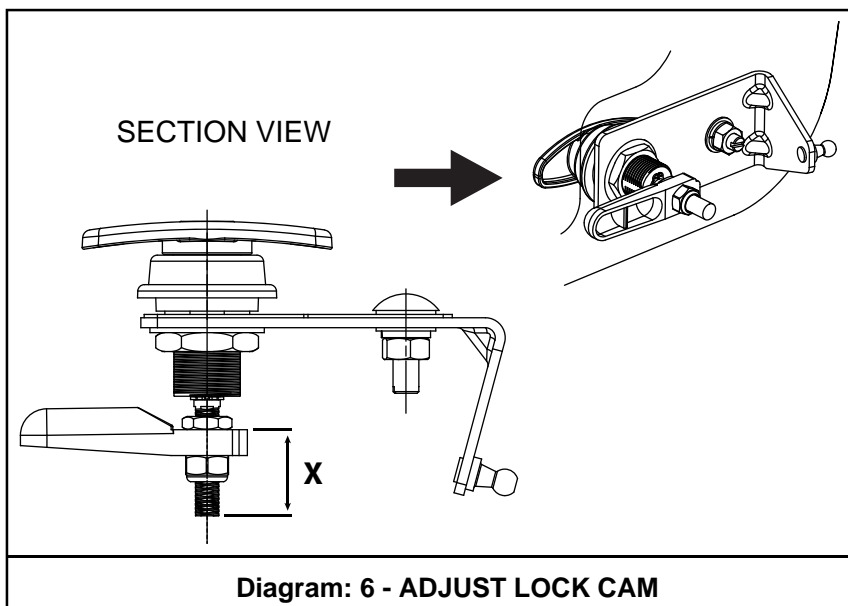
4. If larger brackets are installed, replace all of them with the brackets provided in the kit.

- On the window, loosen the grab screw (2).
- Remove Nylock nut (1), slide the lock cam (3) out, remove large lock nut (4), plastic washer (5).
- Remove lock handle (7) from the glass, with rubber seal (6).
- Remove Nylock nut (8), spring washer (9), flat washer (10), screw (14) and plastic washer (13).
- Remove and discard bracket (11) and retain rubber seal (12).



**Diagram: 5 - FIT NEW BRACKET**

5. Using new Ball Strut Bracket provided, reinstall the lock following step 4 in reverse order.  
Torque all nuts to the torque settings.



**Diagram: 6 - ADJUST LOCK CAM**

6. • Set the lock cam to the value recorded in step 2.  
• Secure the cam with the grab screw and check the lock operation.  
• Reattach the gas strut by pushing it into the ball on the strut bracket.

## Mitsubishi Triton 2015 Canopy Roof Rack

### ROOF RACK INSTALLATION

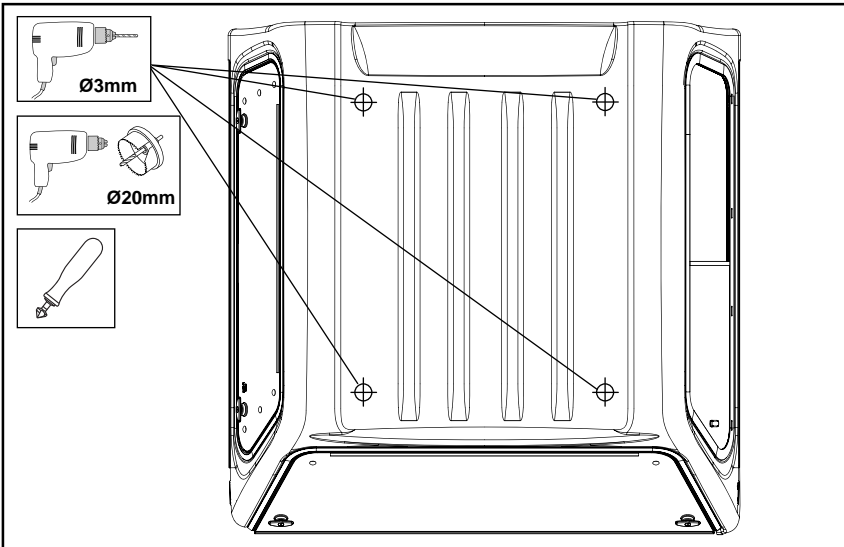


Diagram: 7 - DRILL HOLES IN THE CANOPY

- From inside the canopy locate four scribe marks and carefully drill the (4) holes with  $\text{\O}3\text{mm}$  pilot drill, next re-drill the (4) holes with a  $\text{\O}20\text{mm}$  hole saw. Remove all burrs and sharp edges.

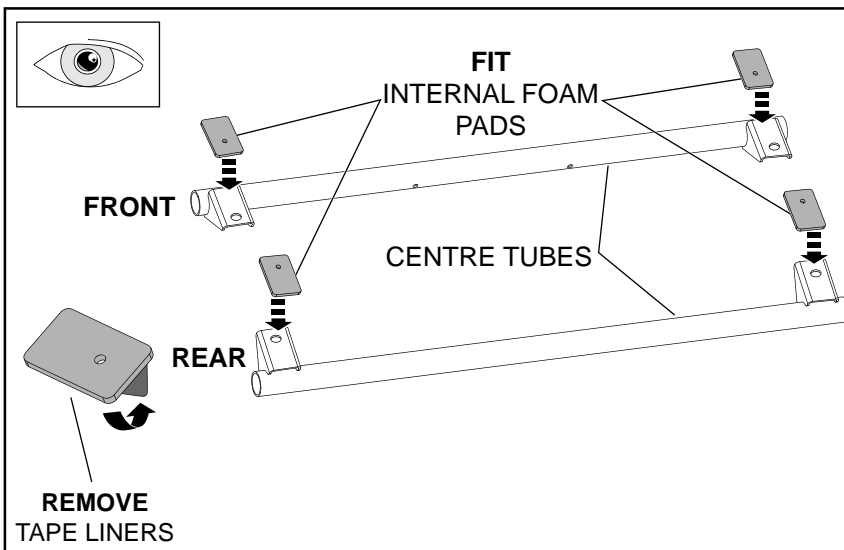


Diagram: 8 - APPLY FOAM PADS TO CENTRE TUBES

- Remove tape liners from all (4) internal foam pads and fit to the centre tube brackets as shown.

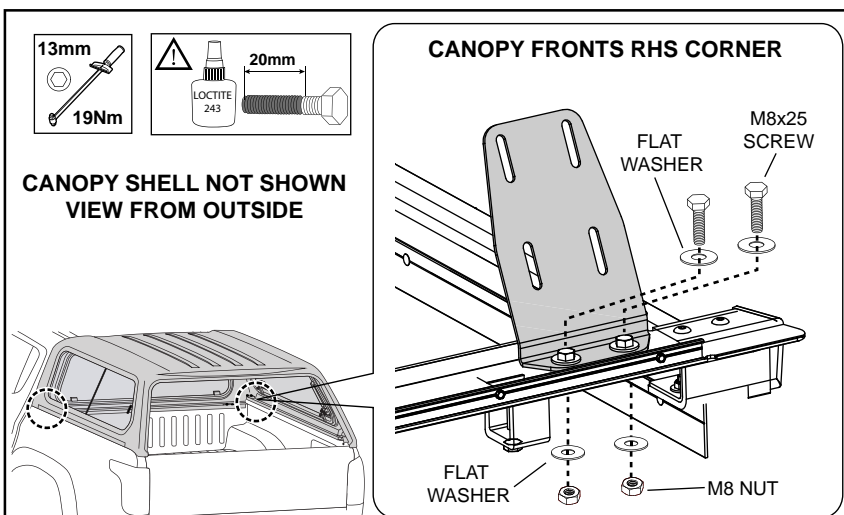
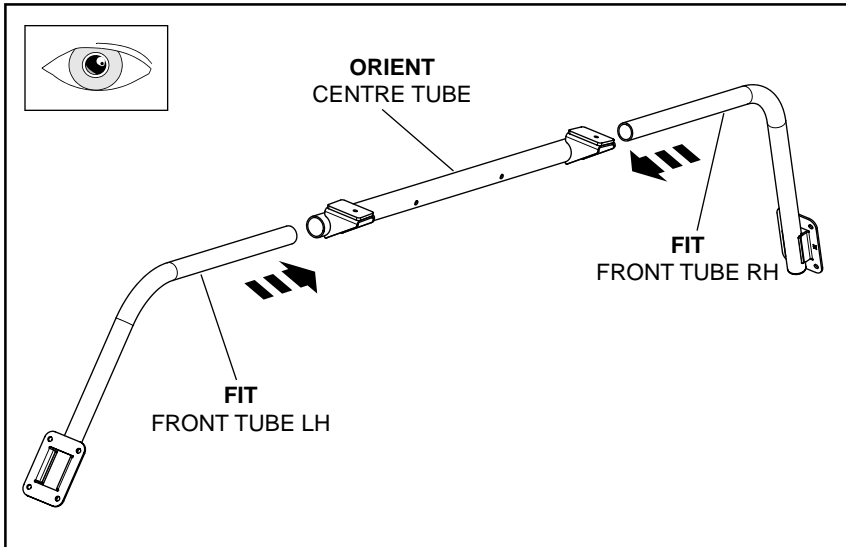


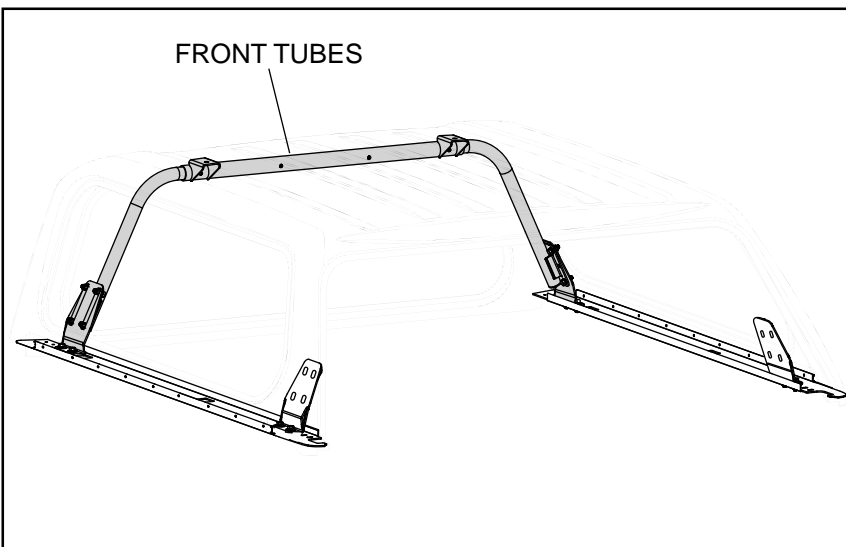
Diagram: 9 - ASSEMBLE FRONT MOUNT BRACKETS

- Secure a flat mounting bracket with two M8x25 screws, flat washers and M8 hex nuts as shown. Fit one flat mounting bracket at each front corner.

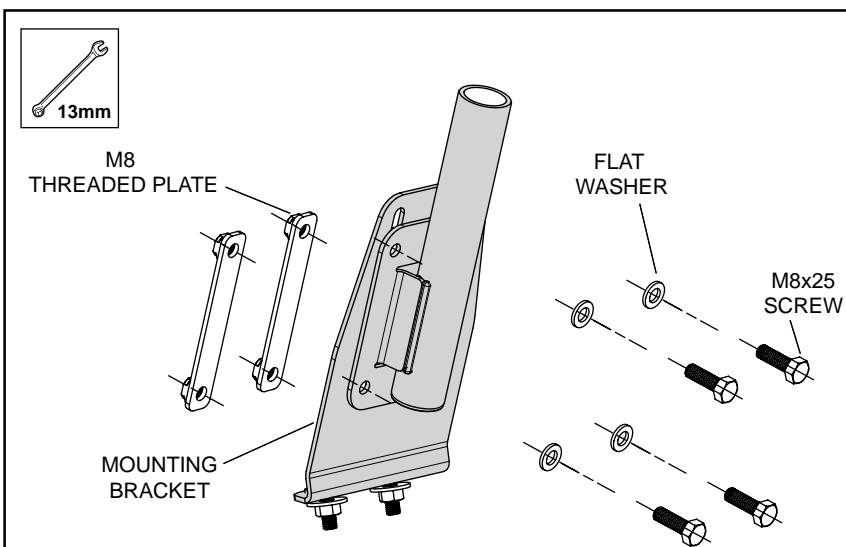
**Note:** Apply Loctite 243 to all bolt threads.

**Diagram: 10 - ASSEMBLE FRONT TUBES**

- 10.** Orient one centre tube so the foam pad on the brackets is facing up and the brackets are coming out towards you. Slide the front tube LH assy into the LH side of the centre tube and the front tube RH into the RH side of the centre tube as shown.

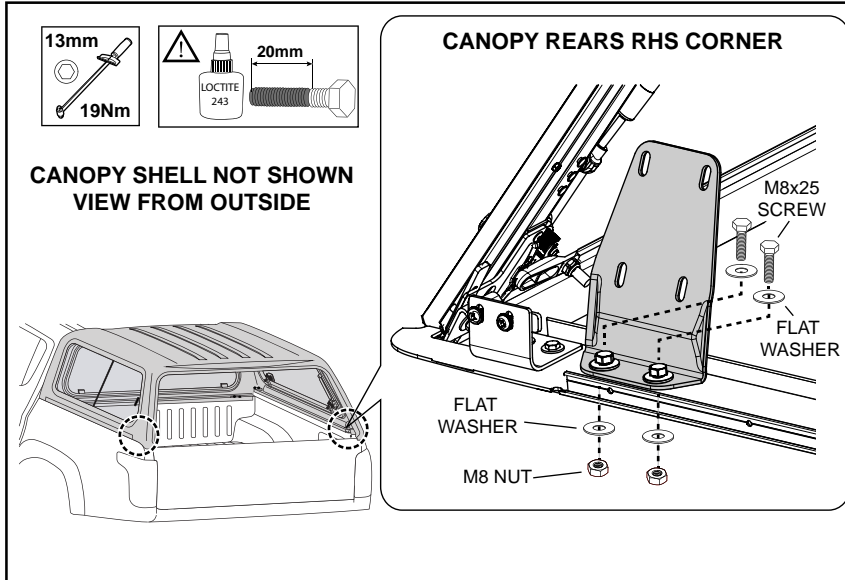
**Diagram: 11 - FIT FRONT TUBES**

- 11.** Fit the front tubes into the canopy and position the tube brackets to the inside of the front brackets. Rotate the centre tube so the brackets are located against the canopy roof as shown.

**Diagram: 12 - SECURE FRONT TUBES**

- 12.** Loosely secure each side with (4) M8x25 hex head bolts, (4) M8 flat washers & (2) M8 threaded plates as shown.

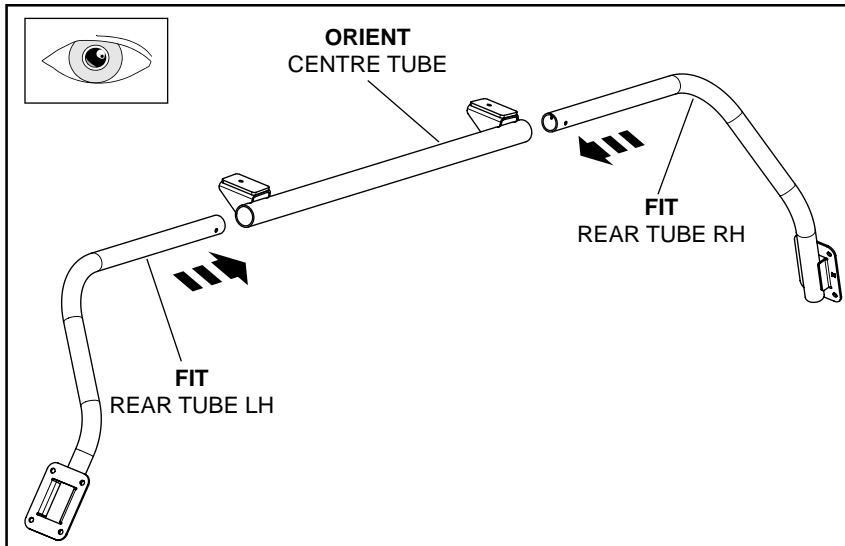
**Finger Tighten only and leave temporarily untightened.**



- 13.** Secure a pressed mounting bracket with two M8x25 screws, flat washers and M8 hex nuts as shown. Fit one pressed mounting bracket at each rear corner.

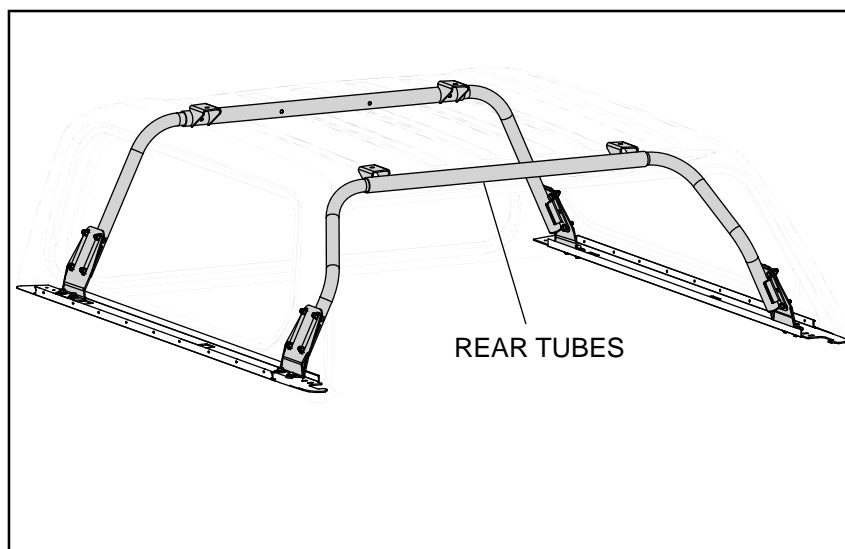
**Note:** Apply Loctite 243 to all bolt threads.

**Diagram: 13 - ASSEMBLE REAR MOUNT BRACKETS**



- 14.** Orient the other centre tube so the foam pad on the brackets is facing up and the brackets are pointing away from you. Slide the rear tube LH into the LH side of the centre tube and the rear tube RH into the RH side of the centre tube as shown.

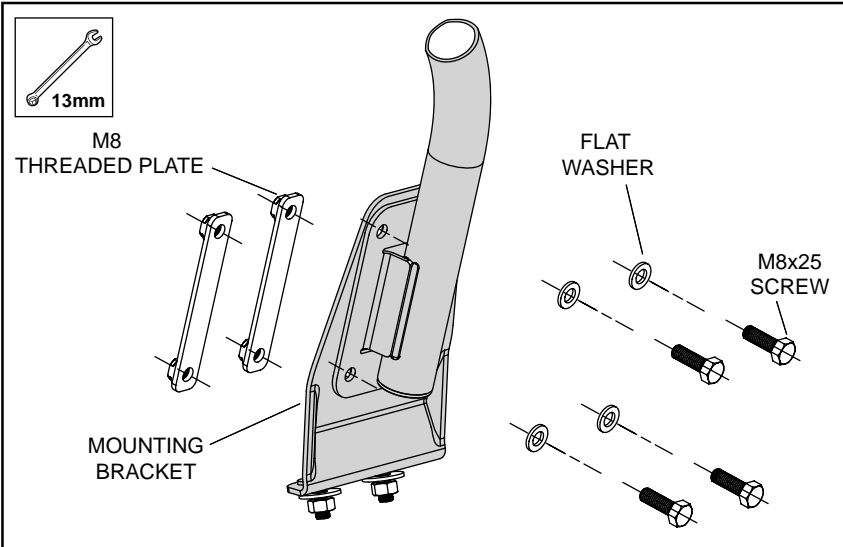
**Diagram: 14 - ASSEMBLE REAR TUBES**



- 15.** Fit the rear tubes into the canopy and position the tube brackets to the inside of the rear brackets. Rotate the centre tube so the brackets are located against the canopy roof as shown.

**Diagram: 15 - FIT REAR TUBES**

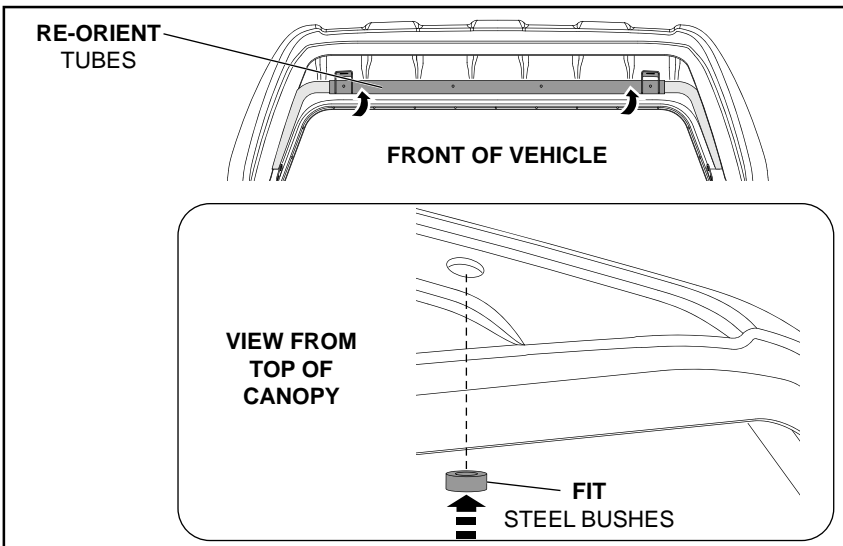




**Diagram: 16 - SECURE REAR TUBES**

16. Loosely secure each side with (4) M8x25 hex head bolts, (4) M8 flat washers & (2) M8 threaded plates as shown.

**Finger Tighten only and leave temporarily untightened.**

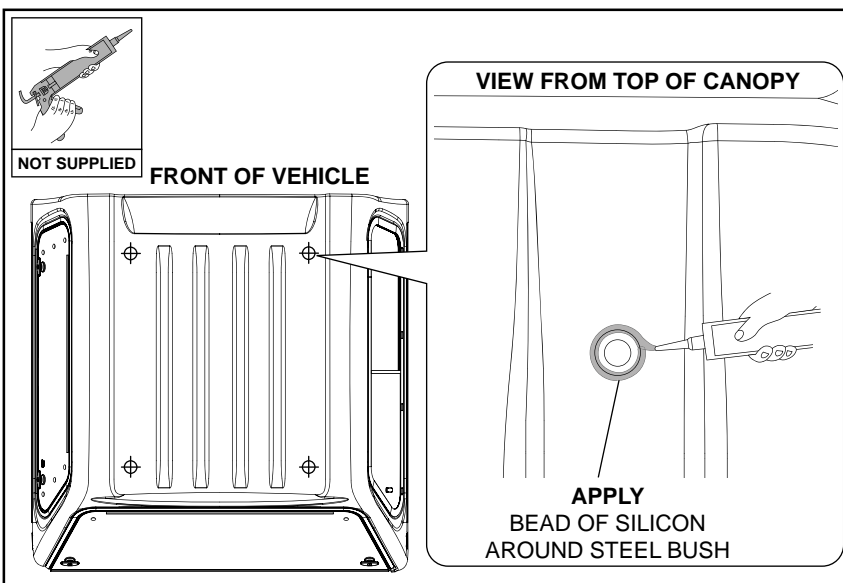


**Diagram: 17 - FIT STEEL BUSHES**

17. Re-orient tube assembly and rotate centre tube back up to the roof.

Fit the (4) steel bushes into the (4) Ø20mm drilled holes.

**IMPORTANT: If the steel bushes are very tight to fit, ream the holes out gradually until the steel bushes are a neat fit.**



**Diagram: 18 - APPLY SILICON**

18. Apply a bead of non-acetic silicon (not supplied) to the top of the canopy around the previously fitted steel bush, as shown.

**IMPORTANT: Ensure there is a continuous bead of silicon all around the steel bush to prevent water entering the canopy.**

## Mitsubishi Triton 2015 Canopy Roof Rack

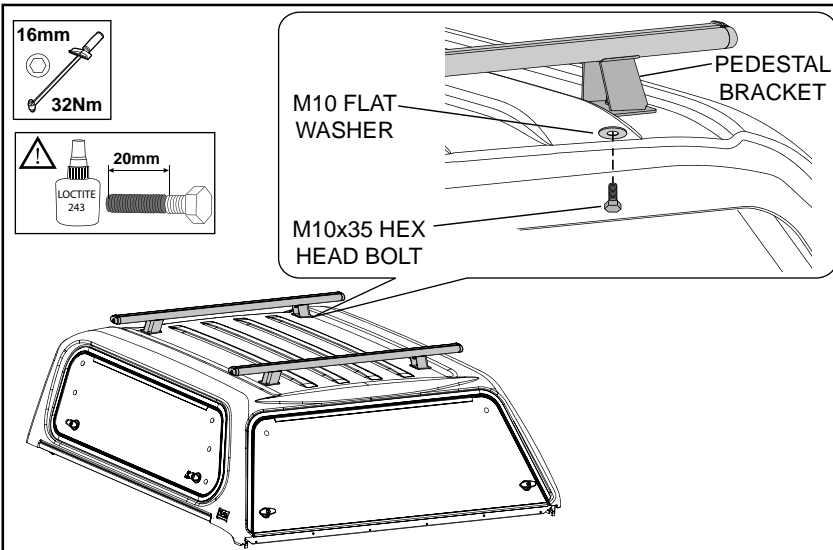


Diagram: 19 - FIT CROSS BAR ASSEMBLY

19. Carefully position the front cross bar assembly on the canopy aligning the holes with the previously fitted Steel Bushes. Secure each bracket to the centre tubes with M10X35 hex head bolts, and M10 Flat Washers as shown. Repeat process for the rear bar assembly.

**Tighten to Torque 32Nm and ensure the pedestal brackets sit parallel across the canopy and do not rotate when tightening.** Clean any excess silicon once roof racks fitted.

 **Note:** Apply Loctite 243 to all bolt threads.

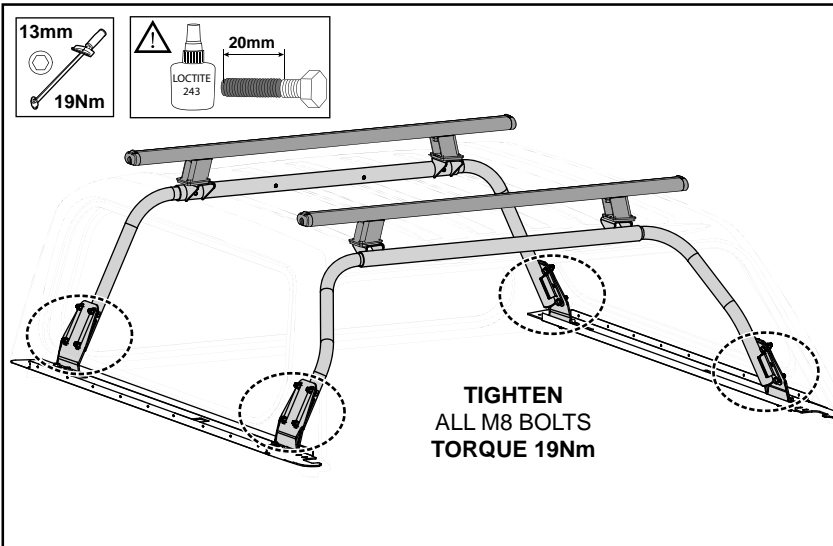


Diagram: 20 - TIGHTEN TUBE ASSY M8 BOLTS

20. Tighten all the M8 hex head bolts securing the tube assemblies to the brackets. **Tighten to Torque 19Nm.**

 **Note:** Apply Loctite 243 to all bolt threads.

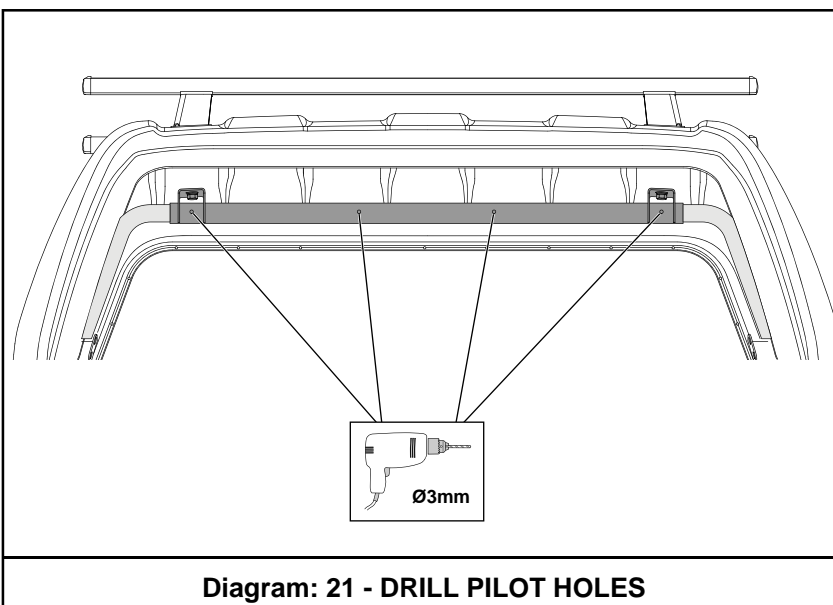
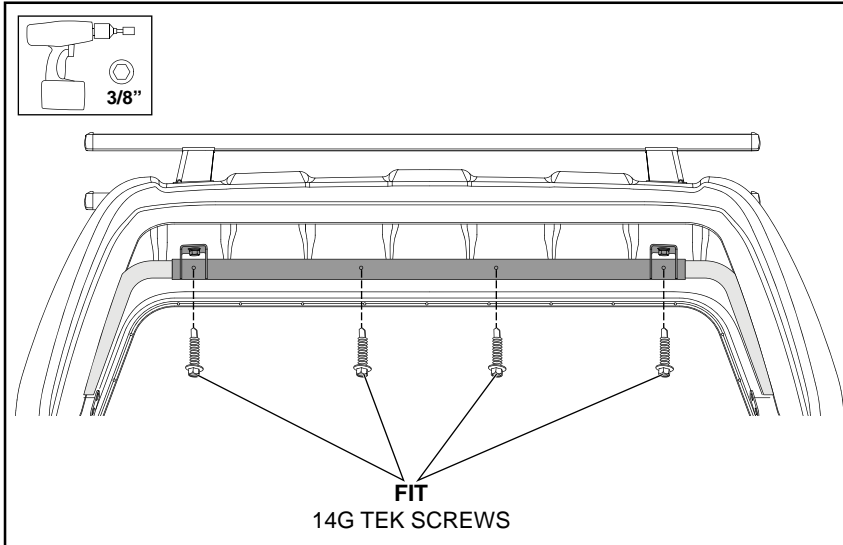


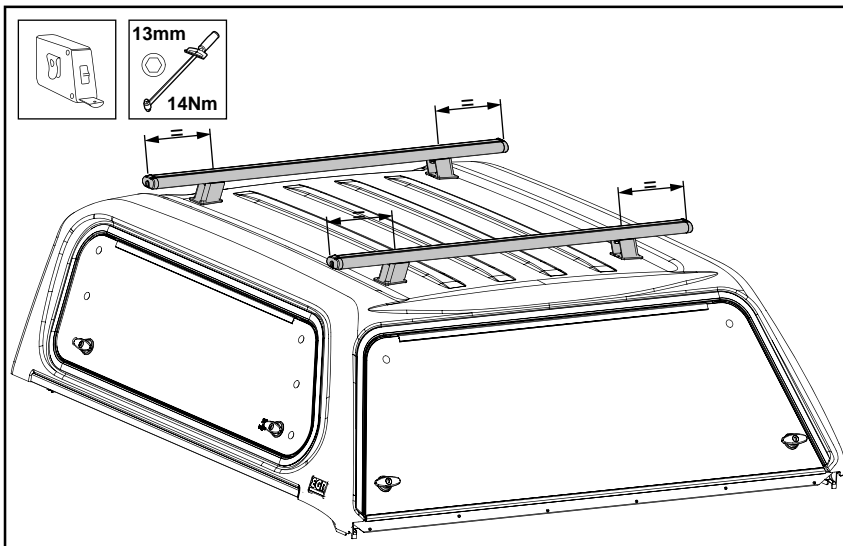
Diagram: 21 - DRILL PILOT HOLES

21. Using the (4) holes in each of the top tube assemblies as a guide, drill (8) Ø3mm pilot holes into the tubes as shown, through one side only.


**IMPORTANT: DO NOT DRILL THROUGH BOTH SIDES OF THE TUBE.**

**Diagram: 22 - SECURE TUBE ASSEMBLIES TOGETHER**

21. Using the  $\varnothing 3\text{mm}$  pilot holes as a guide secure the tube assemblies with (8) 14G tek screws as shown.

**Diagram: 23 - SECURE CROSS BARS**

23. Check the cross bar pedestal mountings are aligned with the steel bushes in the canopy. If necessary adjust the pedestal brackets spacing and retighten the (4) M8 hex head bolts securing the roof rack extrusions to the pedestal brackets.

 **Tighten to Torque 14Nm, ensure the extrusion remain parallel across the canopy and the pedestal brackets do not rotate when tightening.**

**PLACE FITTING INSTRUCTIONS IN THE CUSTOMERS LOG BOOK, AND ENSURE PAGE 11 OF THESE INSTRUCTIONS ARE DISCUSSED WITH THE CUSTOMER AND A COPY GIVEN TO THE CUSTOMER.**

# Mitsubishi Triton 2015 Canopy Roof Rack

CP0244b

## INSTALLATION CHECKLIST

**Dealer Name:**

Dealer Code:

**Model:**

Stock No:

**Order Date:**

Order No:

**Required By:**

Vin No:

**Canopy Colour****Vehicle Damage Check:****Detail:** \_\_\_\_\_**Vehicle Type:****Roof Rack Checklist - Details of rectifications required:****KEY No. :**

- |   |                          |
|---|--------------------------|
| 1. Cleanliness of vehicle, canopy & roof racks                          | <input type="checkbox"/> |
| 2. Silicon applied to top of canopy around Steel Bush                   | <input type="checkbox"/> |
| 3. EPDM foam tape pads adhered to internal and external brackets        | <input type="checkbox"/> |
| 4. All end caps locked onto roof rack extrusions with the keys supplied | <input type="checkbox"/> |
| 5. Roof rack end cap keys handed over to the Customer                   | <input type="checkbox"/> |
| 6. Roof Racks positioned evenly on the vehicle.                         | <input type="checkbox"/> |
| 7. All M8 Bolts tightened to Torque 19Nm                                | <input type="checkbox"/> |
| 8. All M10 Bolts tightened to Torque 32Nm                               | <input type="checkbox"/> |
| 9. Clean up of work area  | <input type="checkbox"/> |
| 10. Comment   | <input type="checkbox"/> |

**Fitted By:****Vehicle received and Checked by Dealer Staff:****Record Roof Rack Serial Number:****Checked By:**