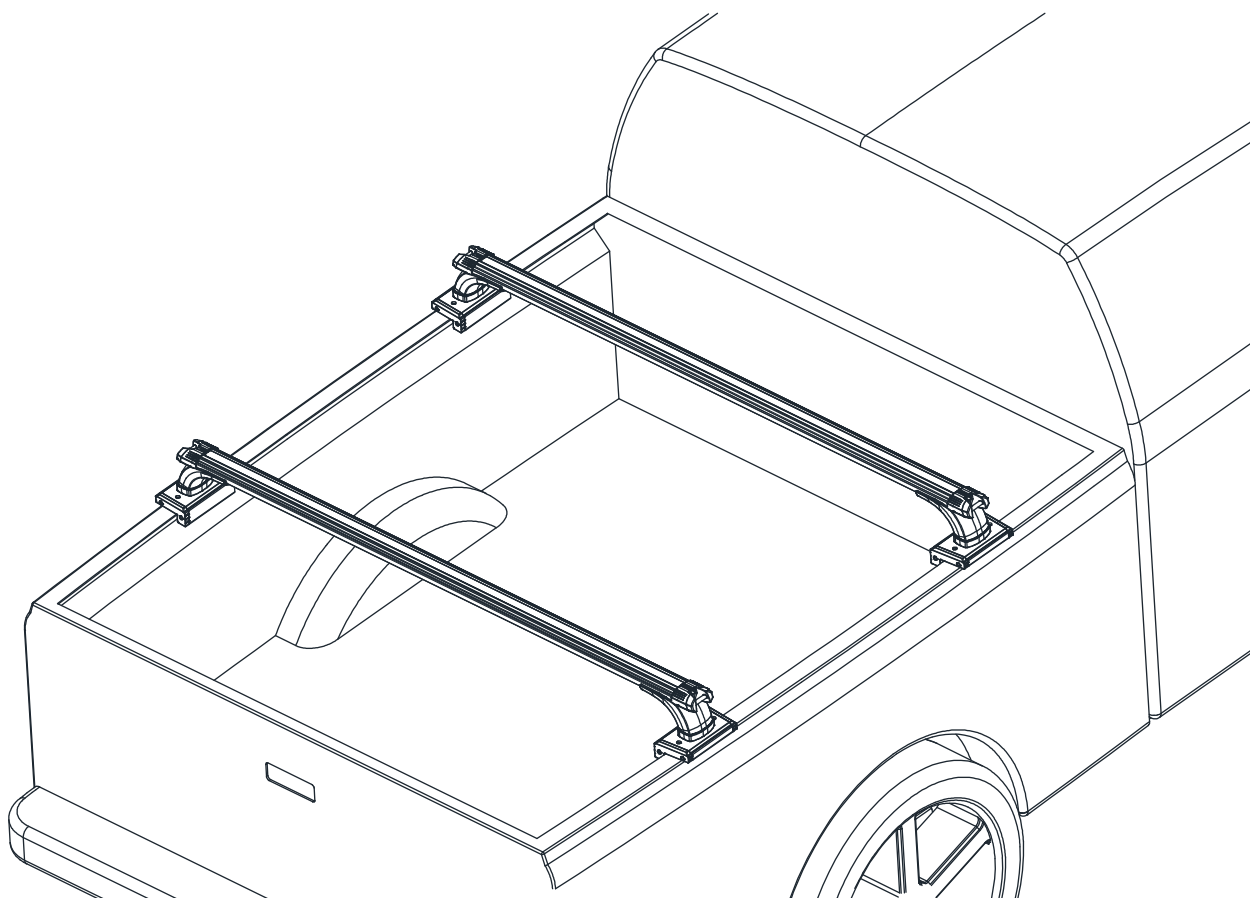


CR01**Rolltrac & Tub Crossbars
Installation Instructions**

Installation Time: Approx. 60 mins

Place these instructions in vehicle's glove box after installation is complete

General Notes

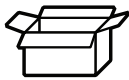
- Read through the fitting instructions before installation of accessory.
- Always install the accessory following the fitting instructions. Failure to do so may cause damage to the vehicle or the accessory.
- Ensure all recyclable discarded vehicle accessory components and packaging are recycled following local recycling regulations.
- It is always recommended that this accessory is fitted by a qualified Technician.
- Safely store and protect any removed vehicle components.
- Ensure all bare metal surfaces are protected using Automotive Bare Metal Primer and touch-up paint.
- Please check content of kit using this list and subsequent sketches.
- Remove all metal swarf and dust from all vehicle surfaces if surface is used for accessory installation.

Safety Notes

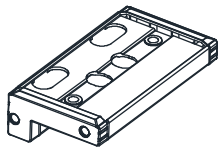
- Check that all work practices comply with safety standards.
- Please wear appropriate clothing and use safety equipment.

**Care Instructions:**Clean with mild detergent
and water solution.Do not use abrasive
cleaners or solvents.

PARTS LIST

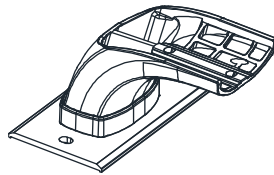


1



Fixed Base
Qty - 4

2



Crossbar Leg & Plate
Qty - 4

3



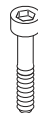
Cross Bar
with End Caps & Square Nuts
Qty - 2

5



Base Bracket
Qty - 8

6



M12 x 50 Base Screw
Qty - 8

7



M12 Base Screw
Spring Washer
Qty - 8

8



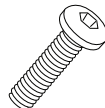
M12 Base Screw
Square Washer
Qty - 8

9



M8 x 16 Cross Bar Screw
Qty - 8

10



M8 x 25 Cross Bar Screw
Qty - 8

11



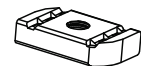
M8x24 Flat Washer
Qty - 8

12



M8
Spring Washer
Qty - 16

13



M8 x 34 x 20 x 5
T-Nut
Qty - 8

14



M8x16 Flat Washer
Qty - 8

15



M8 Cross Bar Screw
Square Washer
Qty - 4

16



M6 x 12 Hex Socket
Button Head Screw
Qty - 4

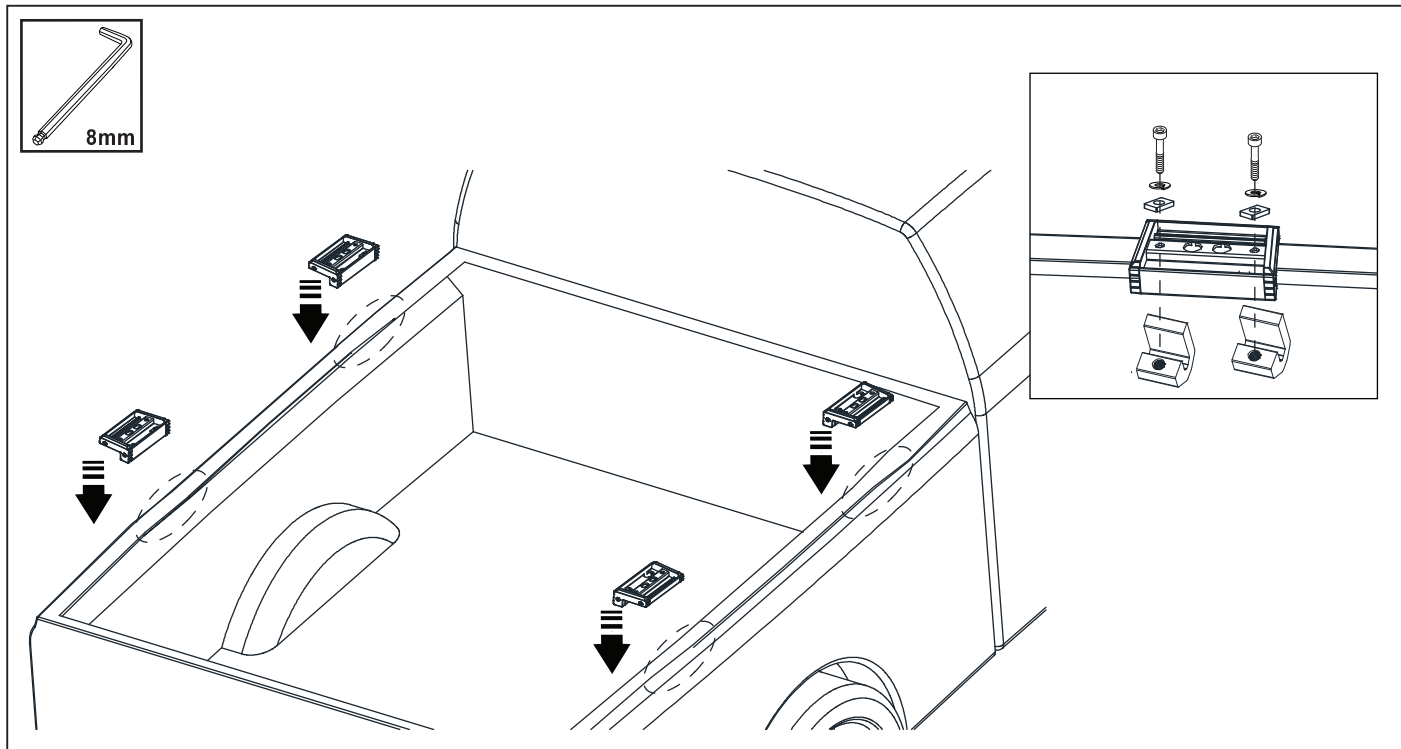


TOOLS REQUIRED



8mm Allen Key

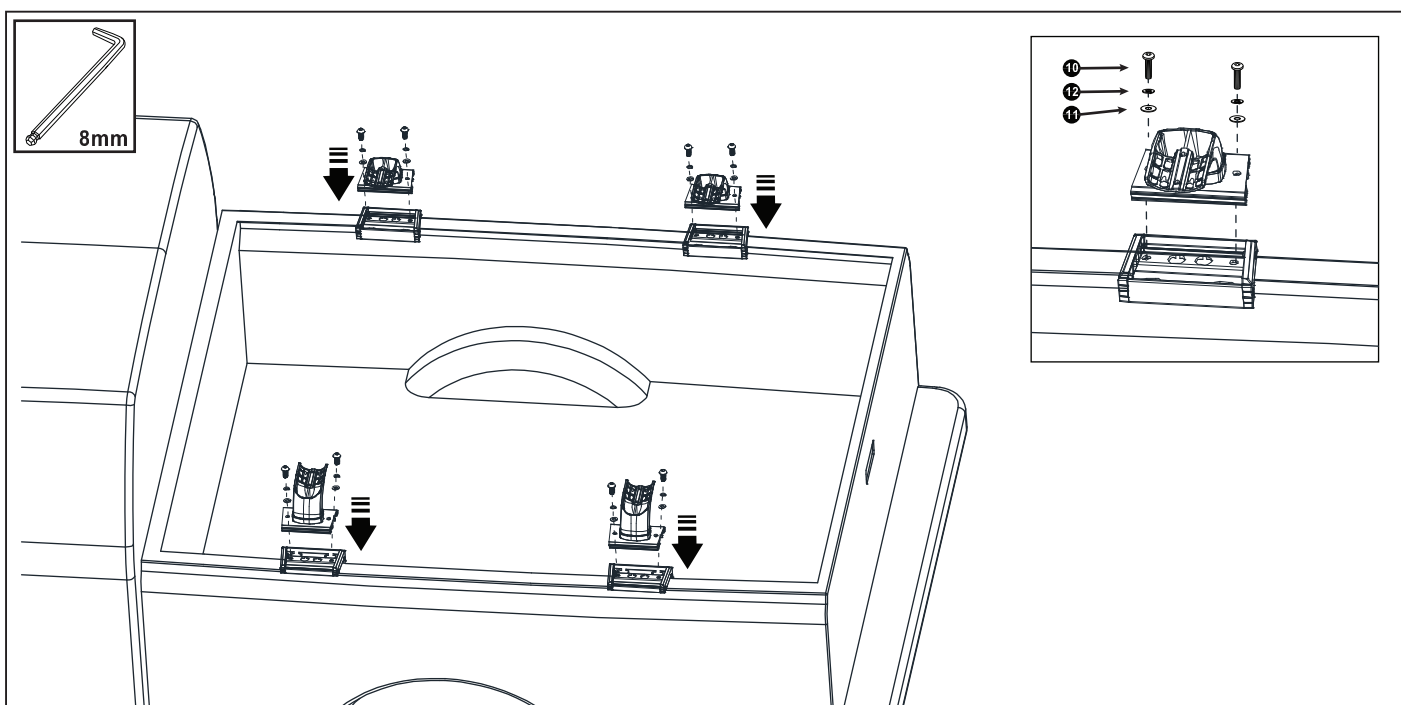
INSTALLATION INSTRUCTIONS



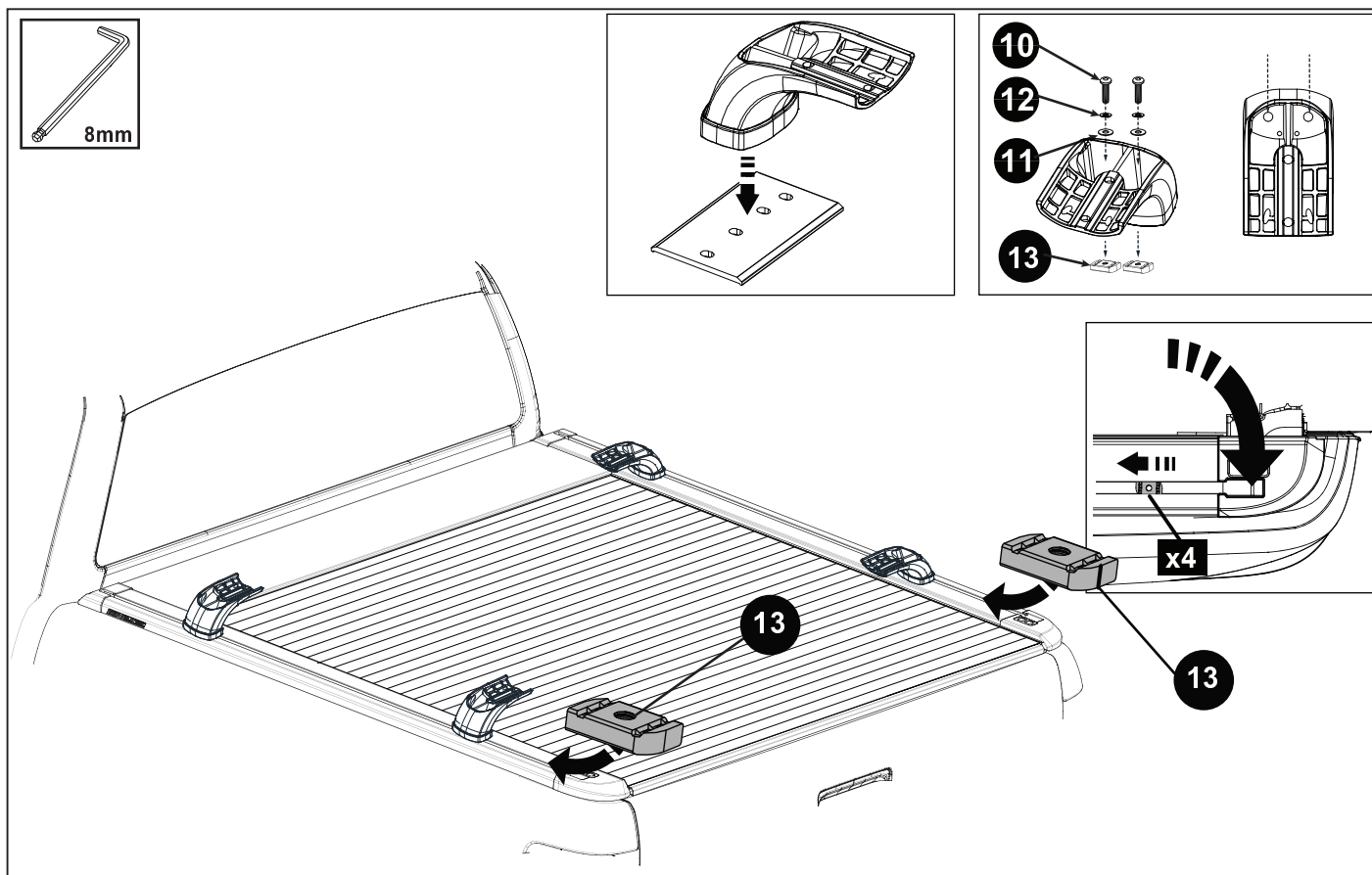
1. IF VEHICLE HAS ROLLTRAC INSTALLED SKIP TO STEP 3

Place the fixed base in the corresponding position of the tub. Fix the base bracket with the M12 x 50mm Base Screw, M12 Base Screw Spring Washer and M12 Base Screw Square Washer. **DO NOT TIGHTEN THE SCREW.**

Measure the size of the left and right 4x bases with a ruler respectively and place in the same position on the left and right. Adjust the position on both sides to align evenly and firmly tighten the screws.

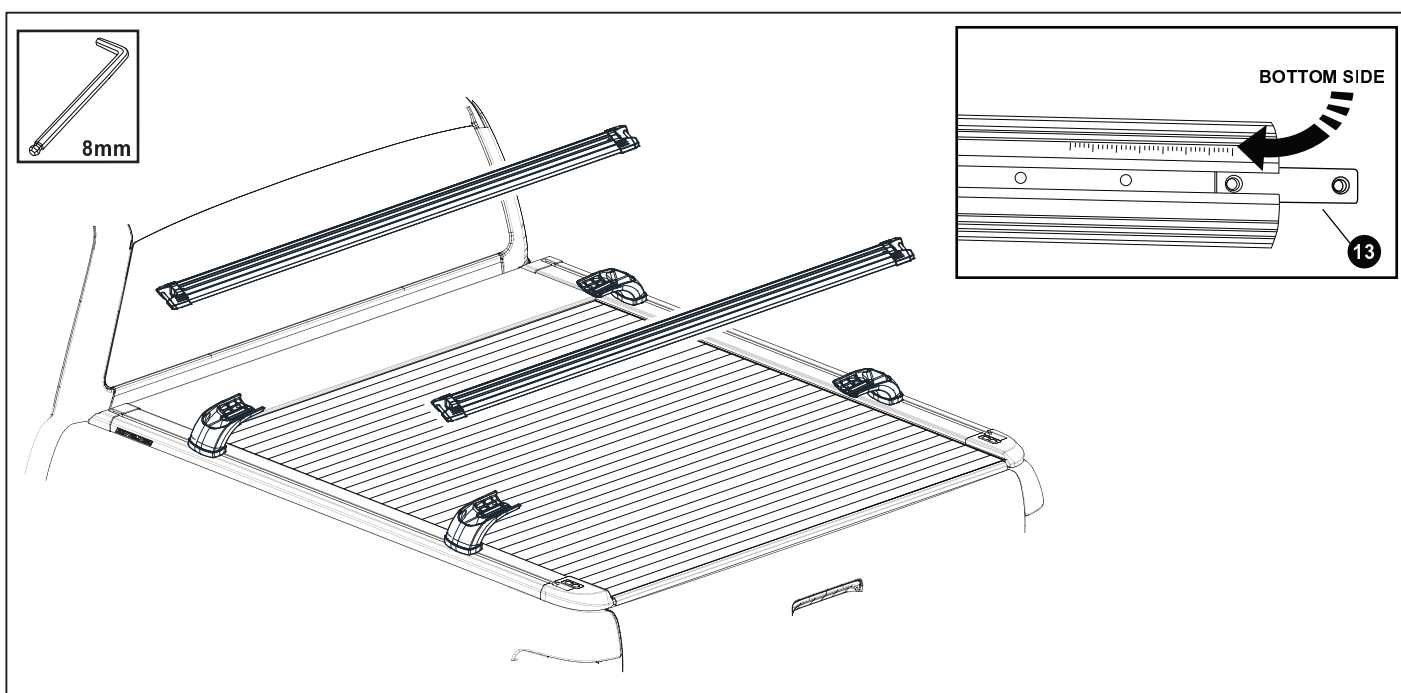


2. Install the base bracket to the fixe base from top to bottom, then install the M8x25 Screw, M8 Flat Washer and M8 Spring Washer on it. Use Allen Key to fix M8 x 25 Cross Bar Screw.

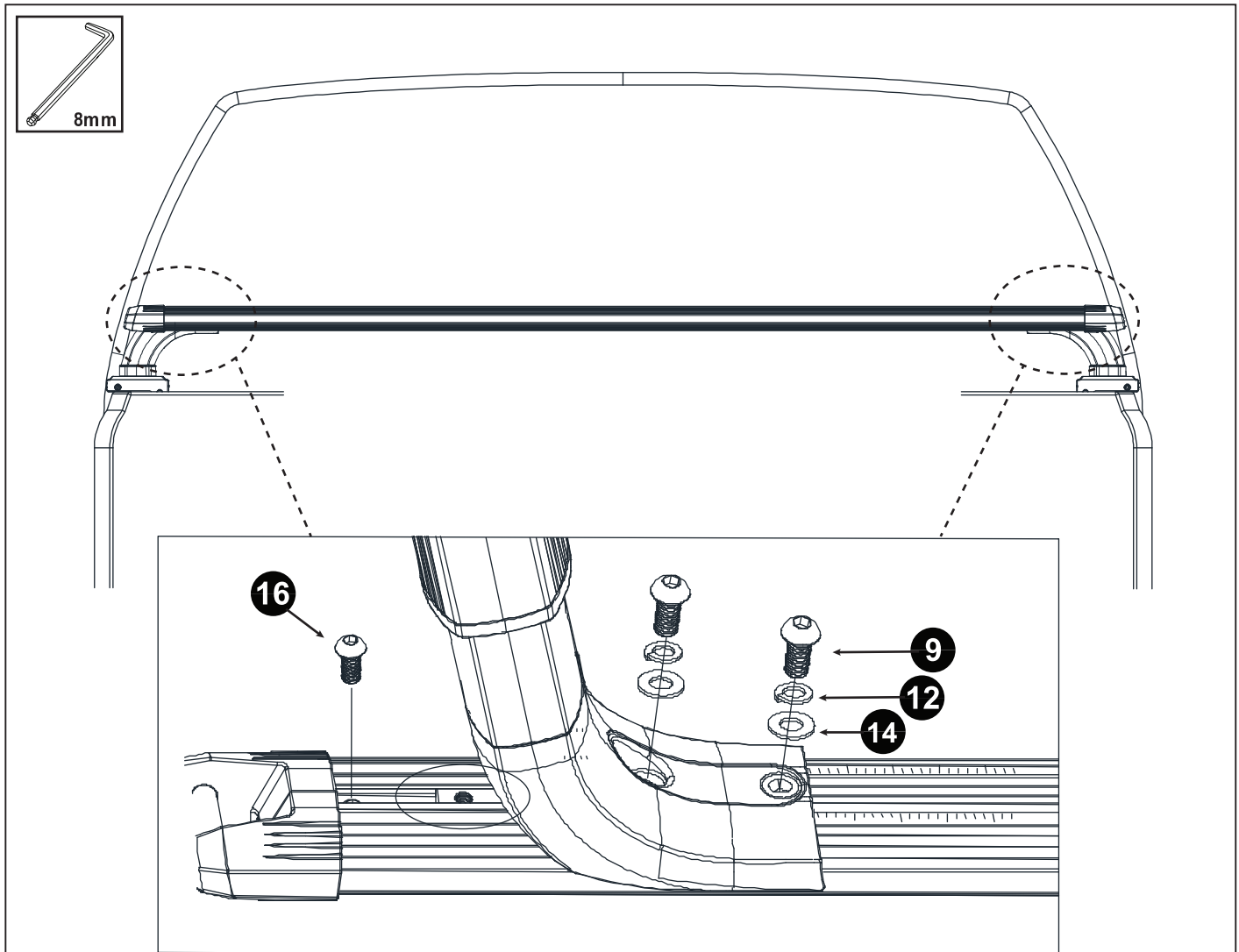


3. FOR ROLLTRAC APPLICATION - Remove Plate from Legs

Install Nutserts into Rolltrac T-Slot. Then use M8x25 Screw with spring washer and flat washer, through Crossbar Leg into T-Nuts.



4. Slide 2 M8 Cross Bar Screw Square Washers into the underside of each Cross Bar. Ensure each Cross Bar has a Square Washer at both ends. Place the crossbar on the Crossbar Legs. Shift Legs along RT Side-Rails as required. Use a Ruler or Tape to align accurately across the Rolltrac as required.



5. To Fasten the Crossbar to the Legs, first slide the crossbar screw square nut to align with the screw hole in the Crossbar Leg. Then loosely install the M8x20 cross bar screw, M8 Flat Washer and M8 Spring Washer.

Check Alignment of the Crossbar across the Vehicle and Rolltrac. Gently tap the Crossbar ends to adjust alignment so that both ends are evenly positioned.

Install M6x12 Hex Socket Button Head Screw into each end of both cross bars, once positioned properly, fasten screws.

Once alignment looks good, firmly tighten all screws.