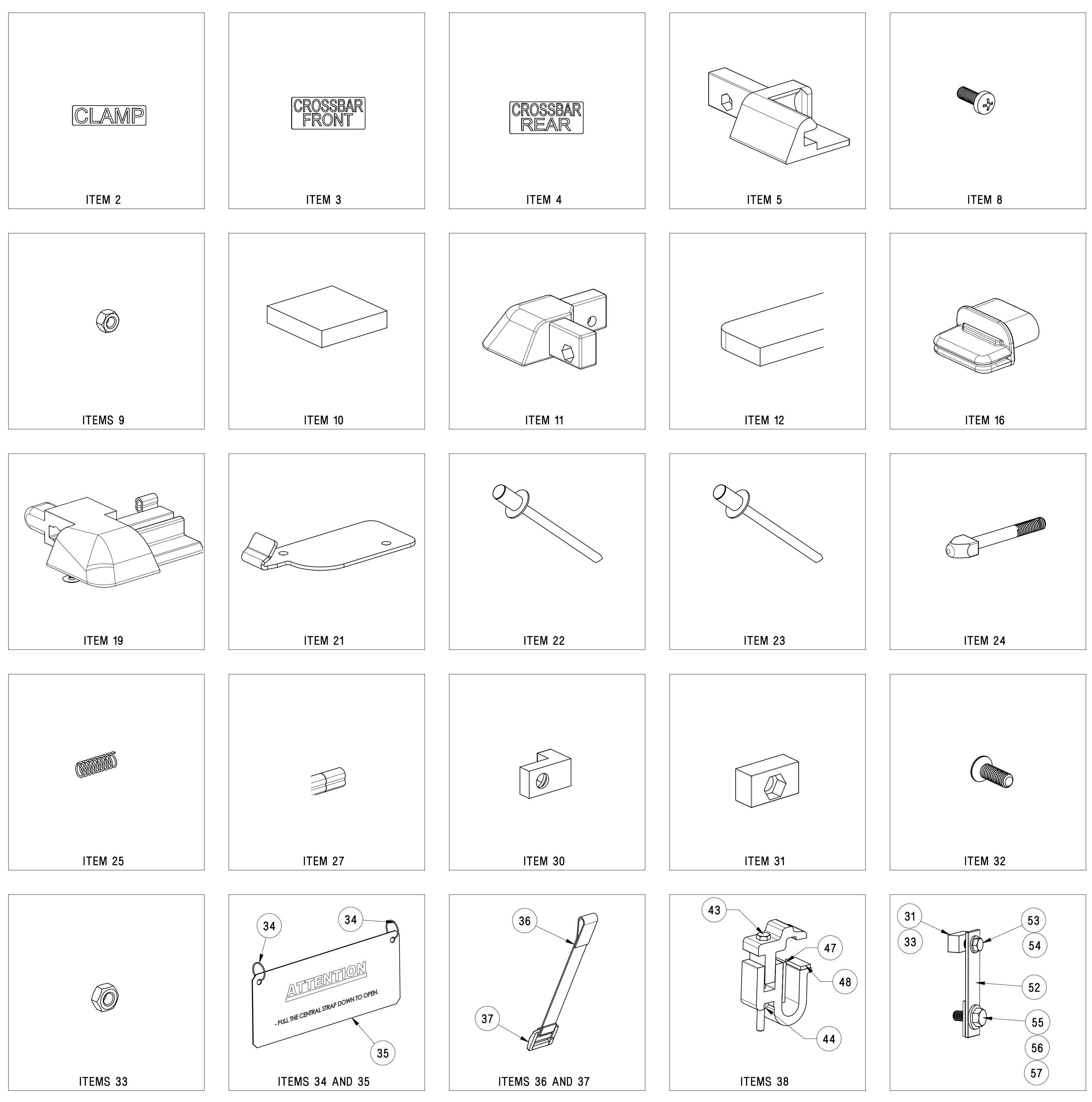
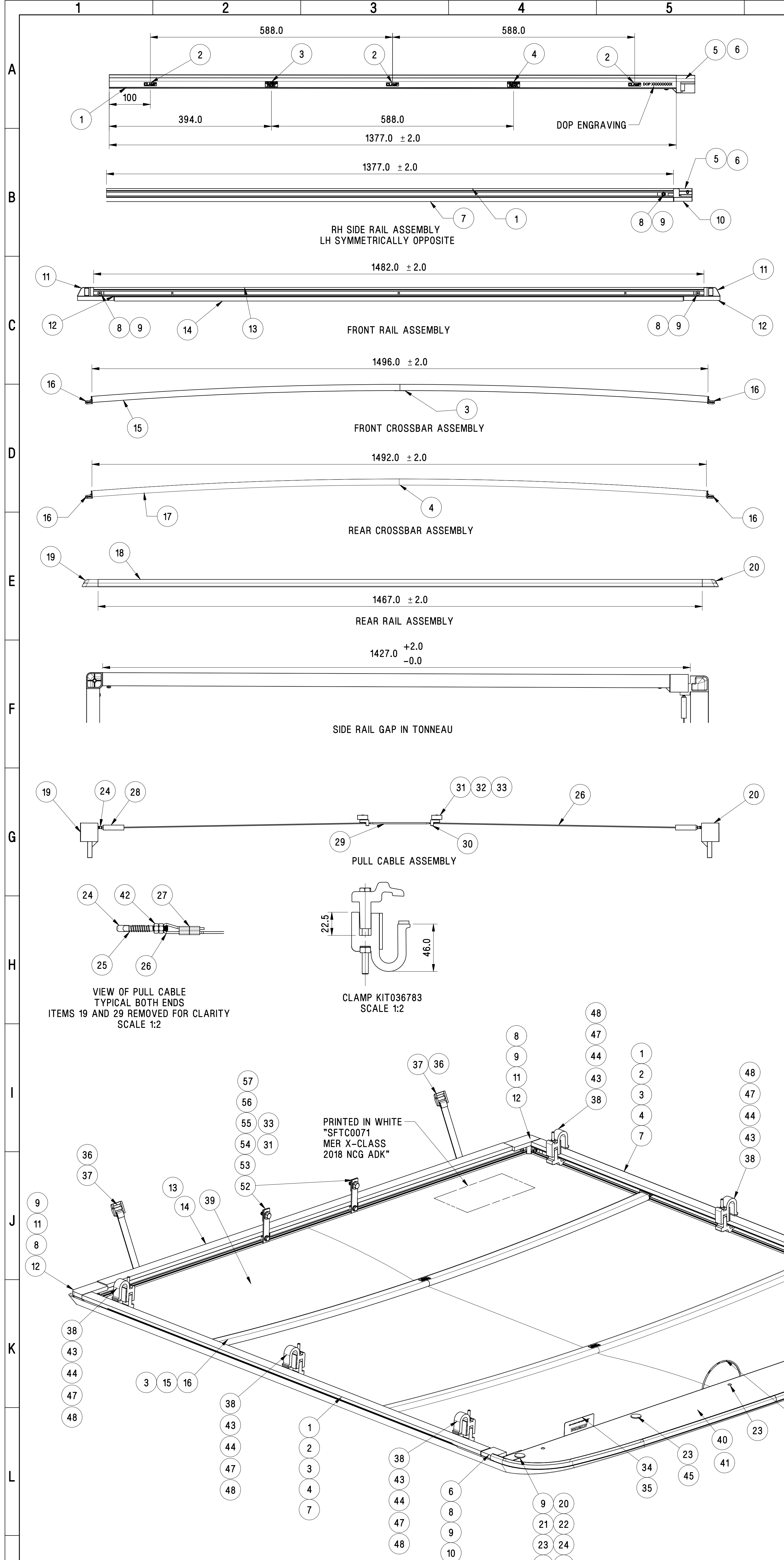


DO NOT SCALE



BOM			
ITEM	DESCRIPTION	MATERIAL & FINISH	QTY
1	SIDE RAIL EXTRUSION	ALUMINIUM 6063-T5; ANODIZED	2
2	LABEL, CLAMP; 30mm x 8mm	ADHESIVE BR 6300 3M	6
3	LABEL, CROSSBAR FRONT; 30mm x 13mm	ADHESIVE BR 6300 3M	3
4	LABEL, CROSSBAR REAR; 30mm x 13mm	ADHESIVE BR 6300 3M	3
5	LATCH MOUNT LH	ALUMINIUM ADC-12	1
6	LATCH MOUNT RH	ALUMINIUM ADC-12	1
7	SIDE RAIL SEAL, 33mm x1377mm x10mm	EXPANDED POLYETHYLENE, BLACK (PEF) HARDNESS 45 SHORE A	2
8	M5 x14 PHILLIPS PAN HD SCREW	CLASS 5.8, GEOMET, BLACK	6
9	M5 HEX NUT GPR	DIN 934, GEOMET, BLACK	6
10	LATCH MOUNT SEAL, 44mm x 43mm x 9.3mm	RUBBER, BLACK	2
11	FRONT CORNER BLOCK	NYLON 6.6, 30% GLASS FILLED, BLACK	2
12	FRONT CORNER BLOCK SEAL, 10mm THICK 88mm x 38mm x 10mm	EXPANDED POLYETHYLENE (CR), BLACK hardness 20 Shore A	2
13	FRONT RAIL EXTRUSION, 1480mm	ALUMINIUM 6063-T5; ANODIZED	1
14	FRONT RAIL SEAL, 1381mm x 32mm x 10mm	EXPANDED POLYETHYLENE (CR), BLACK hardness 20 Shore A	1
15	FRONT CROSSBAR	ALUMINIUM 6063-T5; ANODIZED	1
16	CROSSBAR END	NYLON 6.6, 30% GLASS FILLED, BLACK	4
17	REAR CROSSBAR	ALUMINIUM 6063-T5; ANODIZED	1
18	REAR RAIL EXTRUSION	ALUMINIUM 6063-T5; ANODIZED	1
19	LATCH LH	ALUMINIUM ADC-12	1
20	LATCH RH	ALUMINIUM ADC-12	1
21	REAR RAIL BRACKET RHS	COLD ROLLED STEEL 30#, THICKNESS 1.2mm E COATING + BLACK POWDER COAT	1
22	4 x 16 RIVET	ALUMINIUM, CLEAN	4
23	4 x 10.8 RIVET	ALUMINIUM A1; PAINT BLACK ON THE HEAD	8
24	LOCKING PIN, 50mm x 10mm x 6.5mm	BRASS 59#	2
25	SPRING, 0.7mm, 9 CIRCLES, BOTH END ARE PARALLEL, OD 7.5mm	SPRING STEEL	2
26	PULL CABLE, 1.8m	304 STAINLESS STEEL; GALV 1.6 - 1/16 7x7	1
27	SWAGE	ALUMINIUM	4
28	SLEEVE, 45mm	PVC	2
29	HANDLE PULL CABLE, 250mm; OD7.5mm	EPDM, BLACK	1
30	CABLE GUIDE	ALUMINIUM 400 SAE 305	2
31	RETAINING BLOCK; 25mm x 14.5mm x 10mm	NYLON 6.6, 30% GLASS FILLED, BLACK	4
32	M6 x18 PHILLIPS CSK SCREW	CLASS 5.8, GEOMET, BLACK	2
33	M6 HEX NUT GPR	CLASS 8, GEOMET, BLACK	4
34	SPLIT RING	STEEL	2
35	IDENTIFICATION PLAQUE; 89mm x 40mm x 0.6mm	POLYSTYRENE	1
36	ELASTIC STRAP, 25 x 680mm	PE BLACK; 44% ELASTIC, 56% POLYESTER	2
37	BUCKLE, 25mm	NYLON 66, BLACK	2
38	CLAMP KIT036783	ALUMINIUM 6063-T5	6
39	TONNEAU COVER	REINFORCED PVC SANCAP ES	1
40	REAR PLATE 1548mm x 175mm x 1.5mm	COLD ROLLED STEEL 30#, BLACK	1
41	REAR PLATE SEAL, 1.7m, high 14mm	EPDM (VISTALON 8800 BIMODAL EPDM POLYMERS) DENSITY 0.65-0.7g/cm3	1
42	M5 HEX NUT COPPER	COPPER	4
43	M6x80 HEX BOLT	CLASS 8.8, GEOMET, BLACK	6
44	M6 NUT WITH NYLON LOCK TIGHT	STAINLESS STEEL 304, NYLON	6
45	FOAM 25 x T 2.0mm	EVA35, HARDNESS 30 SHORE A	4
46	TONNEAU COVER SIDE RETAINER (NOT SHOWN)	PE BLACK	2
47	FOAM SHEET, 35mm x 20mm x 3mm	EVA35, HARDNESS 30 SHORE A	6
48	FOAM SHEET, 20mm x 10mm x 3mm	EVA35, HARDNESS 30 SHORE A	6
49	LOCTITE GLUES 495		
50	LOCTITE GLUES 495		
51	REAR RAIL BRACKET LHS	COLD ROLLED STEEL 30#, THICKNESS 1.2mm E COATING + BLACK POWDER COAT	1
52	FRONT TAB BRACKET	MILD STEEL, ANODIZED BLACK	2
53	M6 x 20 HEX BOLT	CLASS 8.8, GEOMET, BLACK	2
54	M6 6x14x1.5 WASHER	STAINLESS STEEL, ANODIZED BLACK	2
55	M8x20 HEX BOLT	CLASS 5.8, GEOMET, BLACK	2
56	M8 8x20x2.0 WASHER	STAINLESS STEEL, ANODIZED BLACK	2
57	FOAM SHEET, 29 x 20 x 2mm	EVA35, HARDNESS 30 SHORE A	2
58	REAR ROUND PLASTIC 10 x 540mm(NOT SHOWN)		2
59	REAR ROUND PLASTIC 10 x 270mm(NOT SHOWN)		1
60	REAR ROUND PLASTIC 10 x 150mm(NOT SHOWN)		1
61	REAR ROUND PLASTIC 10 x 515mm(NOT SHOWN)		2

REV	INITIAL RELEASE	DESCRIPTION	J. ZHOU	10SE18	S. GOMEZ
1			DRAWN	DATE	ENG.R

THE DESIGN AND TECHNICAL INFORMATION CONTAINED HEREIN IS THE EXCLUSIVE PROPERTY OF EGR AND ITS RELATED ENTITIES. IT IS ISSUED ON THE STRICT CONDITION THAT EXCEPT WITH OUR WRITTEN PERMISSION IT MUST NOT BE REPRODUCED, COPIED OR OTHERWISE COMMUNICATED TO ANY THIRD PARTY OR BE USED FOR ANY PURPOSE OTHER THAN THAT STATED IN THE PARTICULAR ENQUIRY, TENDER OR CONTRACT WITH WHICH IT IS ISSUED.

SIEMENS NX COMPUTER GENERATED DRAWING NO MANUAL REVISIONS 3D CAD IS MASTER

HEAD OFFICE 84 EVANS ROAD SALISBURY BRISBANE AUSTRALIA 4107

EGR

TELEPHONE 3277 7999 FACSIMILE 3277 7369

TITLE: MLD16193 SFTC0071-MER X-CLASS PLAIN VERSION 2018 NCG ADK

DRAWN: J. ZHOU DATE: 26AP18
 CHECKED: A. LI DATE: 26AP18
 APPROVED: S. GOMEZ DATE: 26AP18
 SCALE: 1 : 5 SHEET 1 OF 1
 DRAWING NO: SFTC0071

SIZE: A0 REV: A

TOLERANCES UNLESS OTHERWISE SHOWN						
LINEAR TOLERANCES TO AS1100.201 TABLE A1						
NOM.DIMENSIONS mm	OVER 0-10	OVER 10-30	OVER 30-100	OVER 100-300	OVER 300-800	OVER 800-1500
TOLERANCES	± 0.5	± 1.0	± 1.5	± 2.0	± 3.0	OVER 1500-2000 ± 5.0
Holes C/C ± 0.2	HOLES DIAM ± 0.2		ANGULAR ± 0.1			

NOTES:
 1/ ALL DIMENSIONS IN MILLIMETERS.
 2/ PART TO BE FREE OF BURRS & SHARP EDGES.
 3/ ALL BEND RADI EQUAL TO MATERIAL THICKNESS UNLESS STATED.
 4/ ITEM TO THE FINE OF MATERIAL USED IN THE MANUFACTURE THAT WILL CAUSE CHEMICAL ATTACK TO THERMOPLASTICS OR POLYURETHANE MATERIALS.
 5/ UNLESS CONTACT THE RESPONSIBLE EGR PRODUCT ENGINEER.