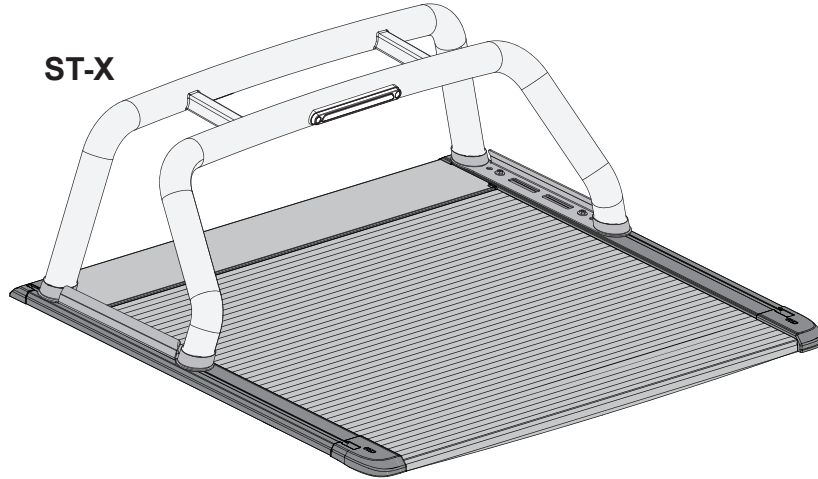


## NIS NAV / AMC MY21

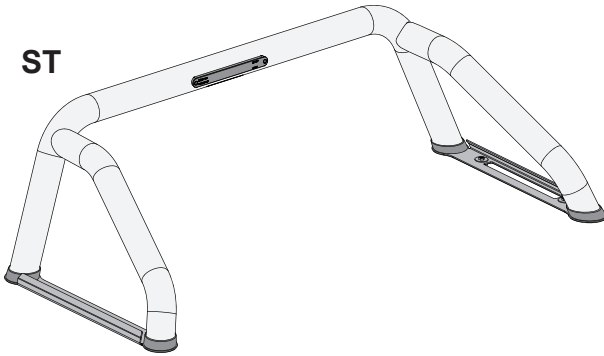
### RollTrac Sportsbar Adaptor Kit

### Installation Instructions

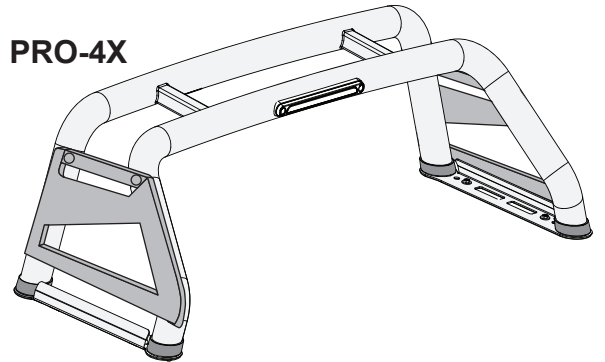
ST-X



ST



PRO-4X



Installation Time: Approx. 30 mins

Place these instructions in vehicle's glove box after installation is complete

#### General Notes

- Read through the fitting instructions before installation of accessory.
- Always install the accessory following the fitting instructions. Failure to do so may cause damage to the vehicle or the accessory.
- Ensure all recyclable discarded vehicle accessory components and packaging are recycled following local recycling regulations.
- It is always recommended that this accessory is fitted by a qualified Technician.
- Safely store and protect any removed vehicle components.
- Ensure all bare metal surfaces are protected using Automotive Bare Metal Primer and touch-up paint.
- Please check content of kit using this list and subsequent sketches.
- Remove all metal swarf and dust from all vehicle surfaces if surface is used for accessory installation.

#### Safety Notes

- Check that all work practices comply with safety standards.
- Please wear appropriate clothing and use safety equipment.



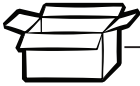
#### Care Instructions:



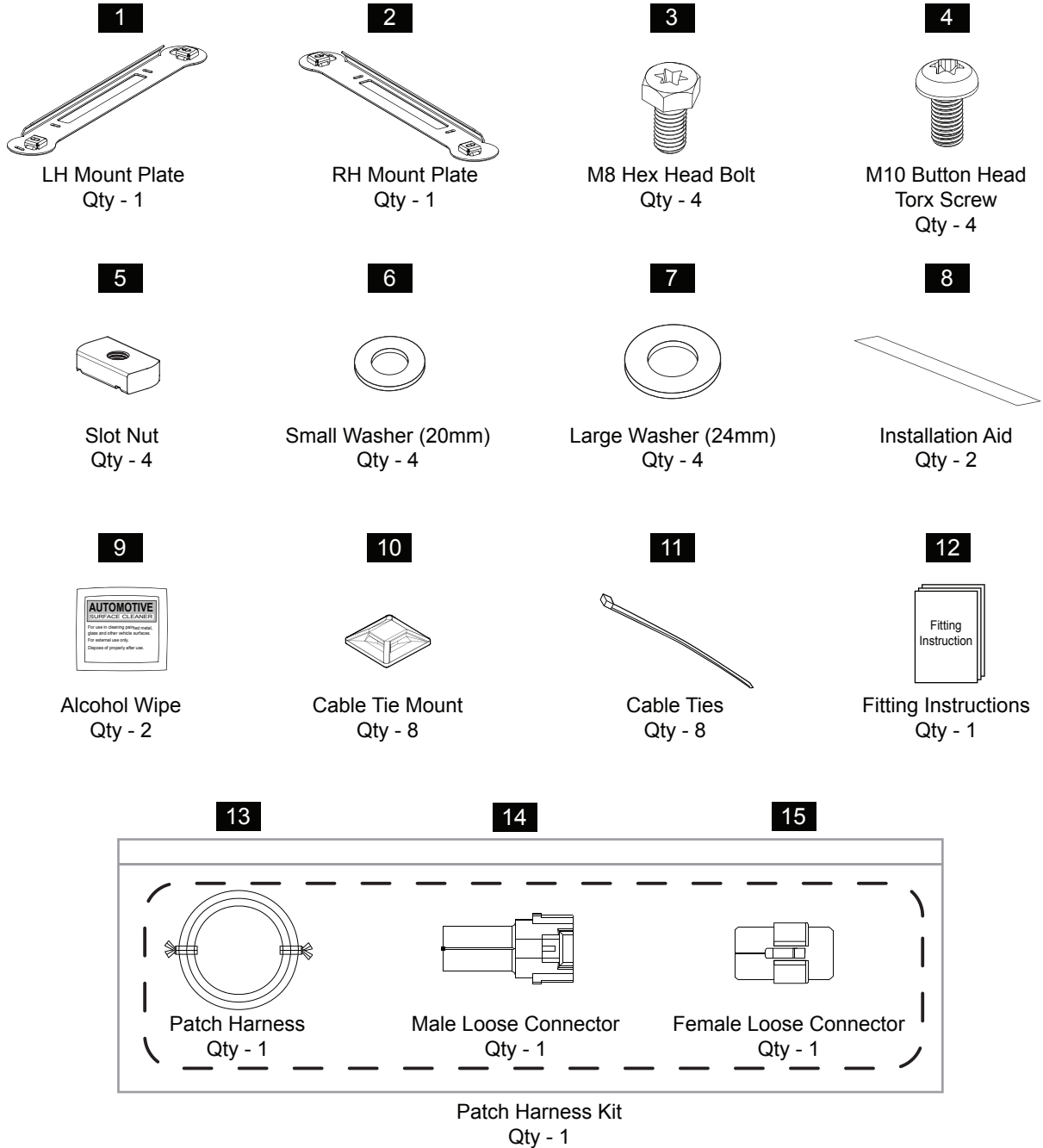
Clean with mild detergent and water solution.



Do not use abrasive cleaners or solvents.



### PARTS LIST



**Important**



**Do not connect Male Loose Connector (14) until Step 6.**

**Important**

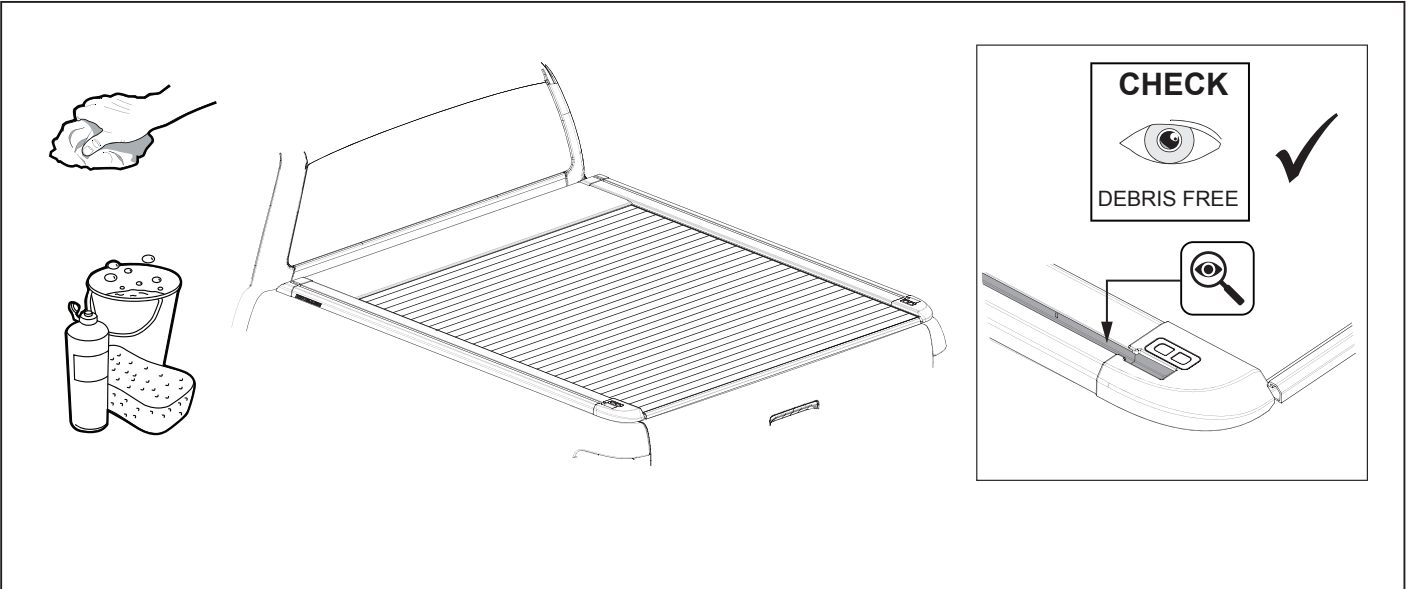


**Do not connect Female Loose Connector (15) until Step 15.**

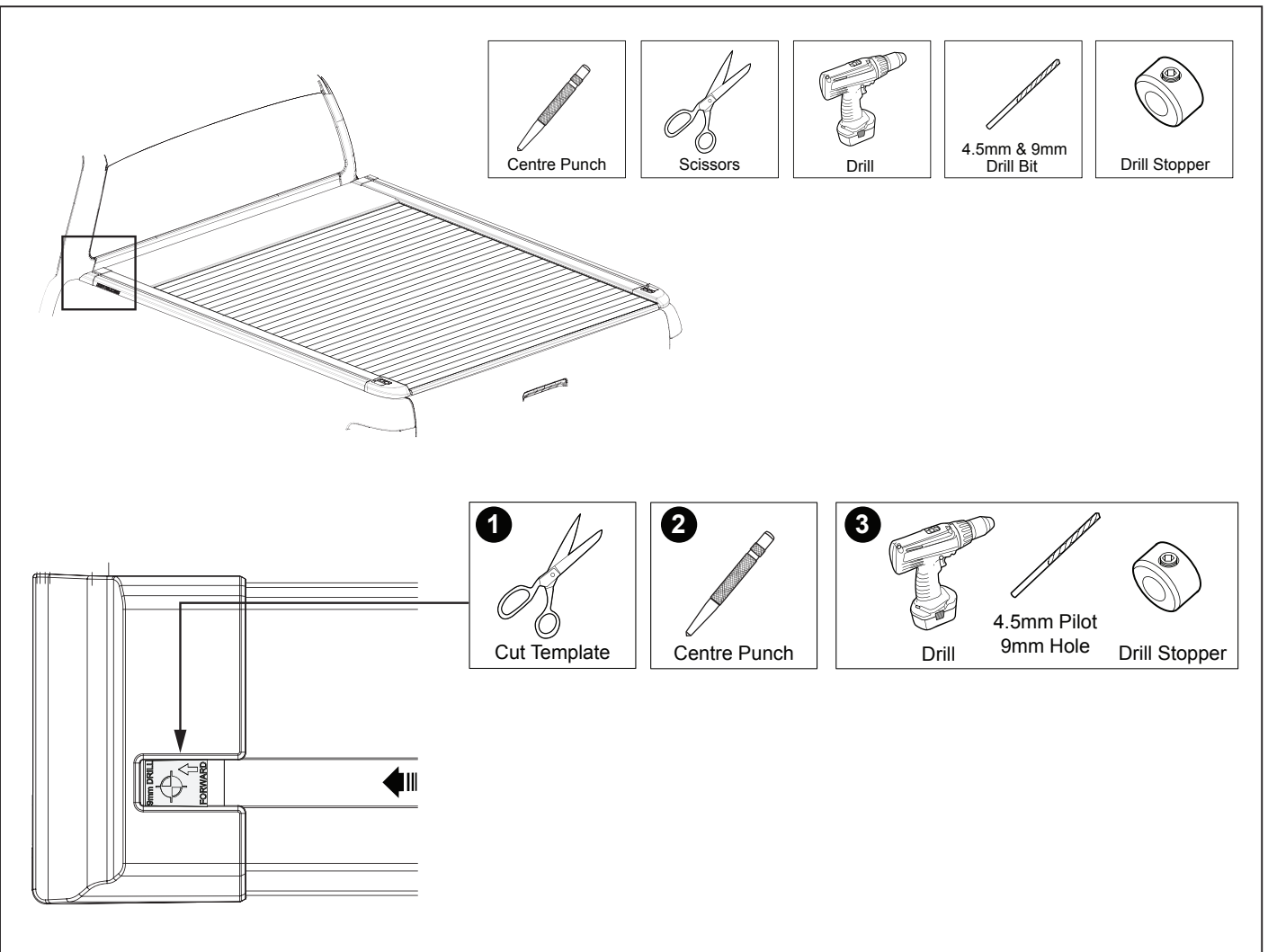
### TOOLS REQUIRED



### INSTALLATION INSTRUCTIONS



1. Prepare the surface of the side rails by cleaning them thoroughly ensuring that any debris in the side rail channels is completely removed.

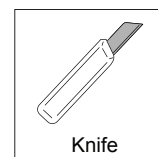
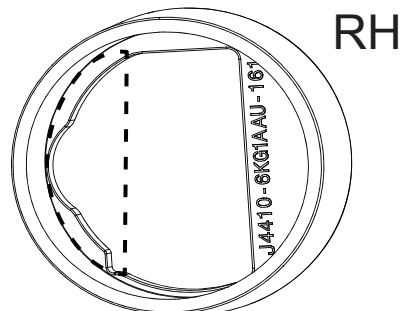
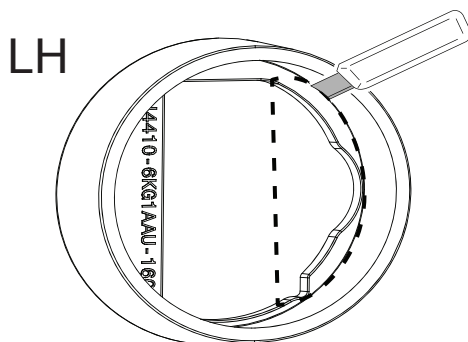


2. Cut out the template on Page 13, insert the template into the channel and push all the way to the end of the LHS Side Rail. Centre punch the hole location, pilot drill with a 4.5mm drill and then drill a 9.0 mm hole all the way through the side rail. Clean out any swarf from the channel and the tub.

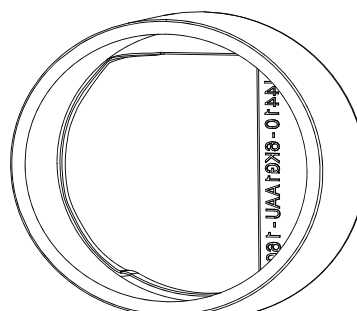
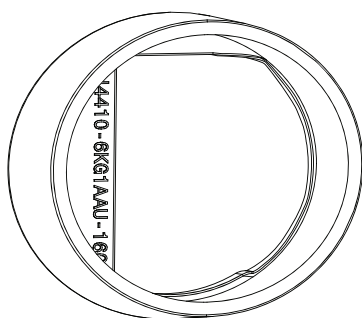
**Caution:** Use Drill Stopper to prevent drilling further than 5mm into the vehicle tub.

APPLICABLE TO ALL MODELS.

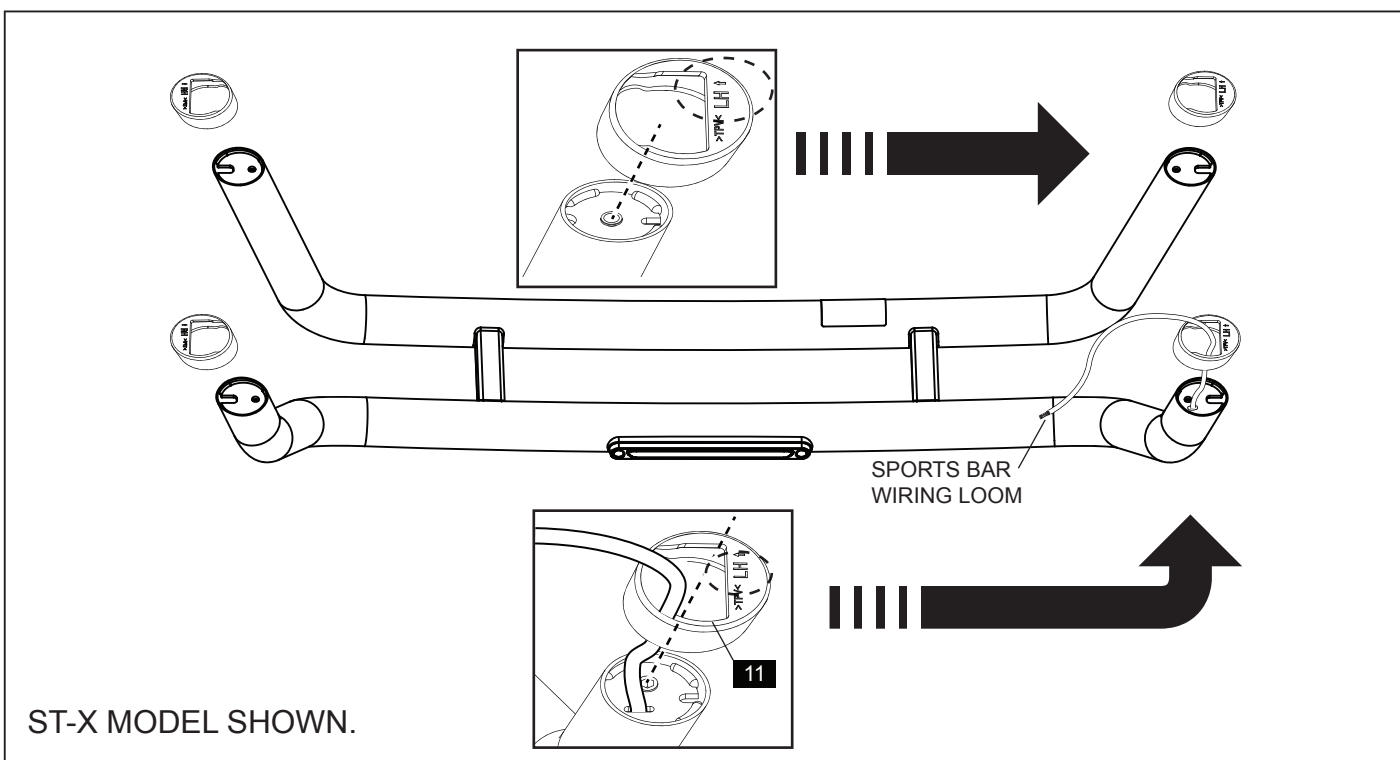
**BEFORE**



**AFTER**



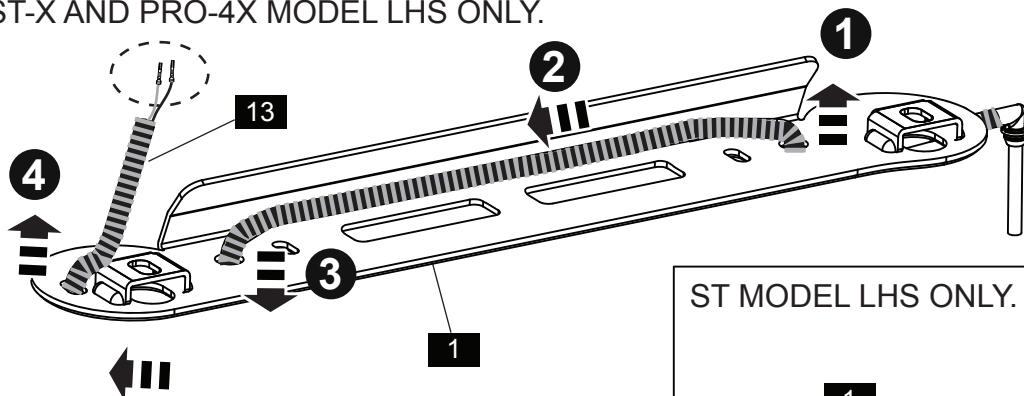
3. Mark and cut inside of all footcups as shown. Discard the cut out sections.  
NOTE: Marked area and cut section will not be seen once installed.



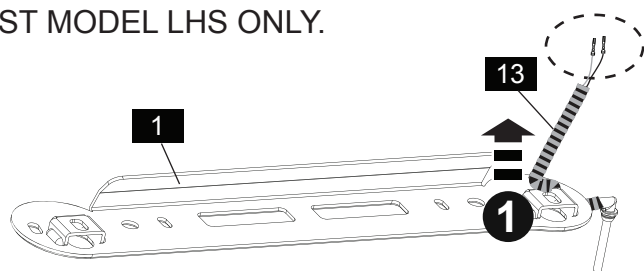
4. Carefully place the Sportsbar upside down.  
Push all four foot cups onto the corresponding foot of the Sportsbar. When installing foot cups, feed the wiring loom through the foot cup hole before installing (depending on model, this will either be the front or rear foot cup). Ensure the foot cups are correctly oriented, with text to the outside of the Sportsbar.



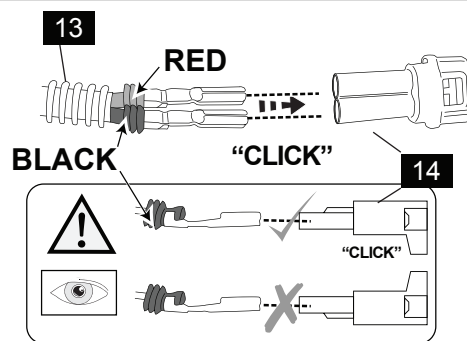
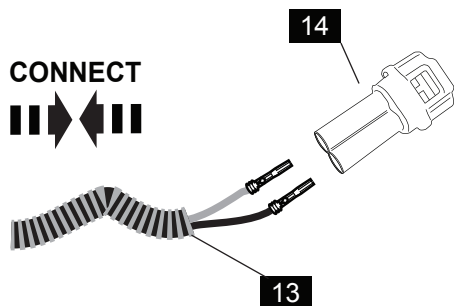
ST-X AND PRO-4X MODEL LHS ONLY.



ST MODEL LHS ONLY.

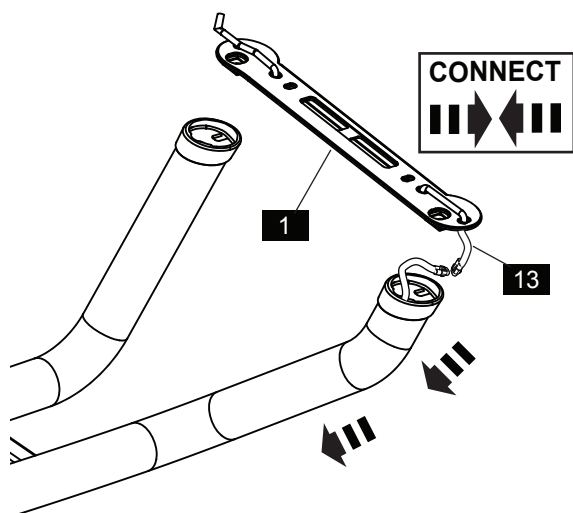


5. Feed the Patch Harness (13) through the LH Mount Plate (1) as shown above.  
**IMPORTANT:** Ensure to start routing the cable with the corrugated end first with no connector attached as circled.

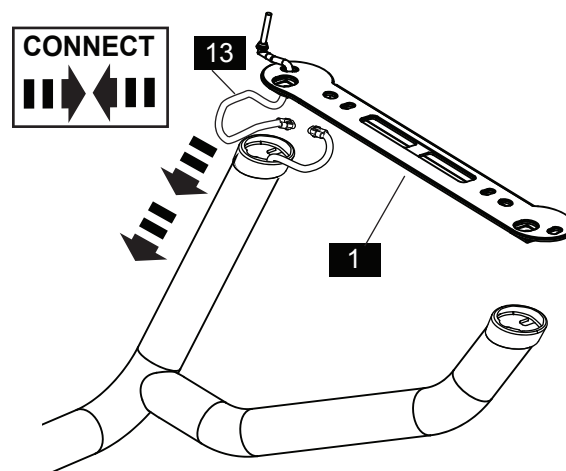


6. Attach the Loose Male Connector (14) to the terminals at the corrugated end of the Patch Harness (13).  
**IMPORTANT:** Match the wire colours of the Patch Harness (13) with the wires from the stop lamp to ensure correct alignment when fitting.

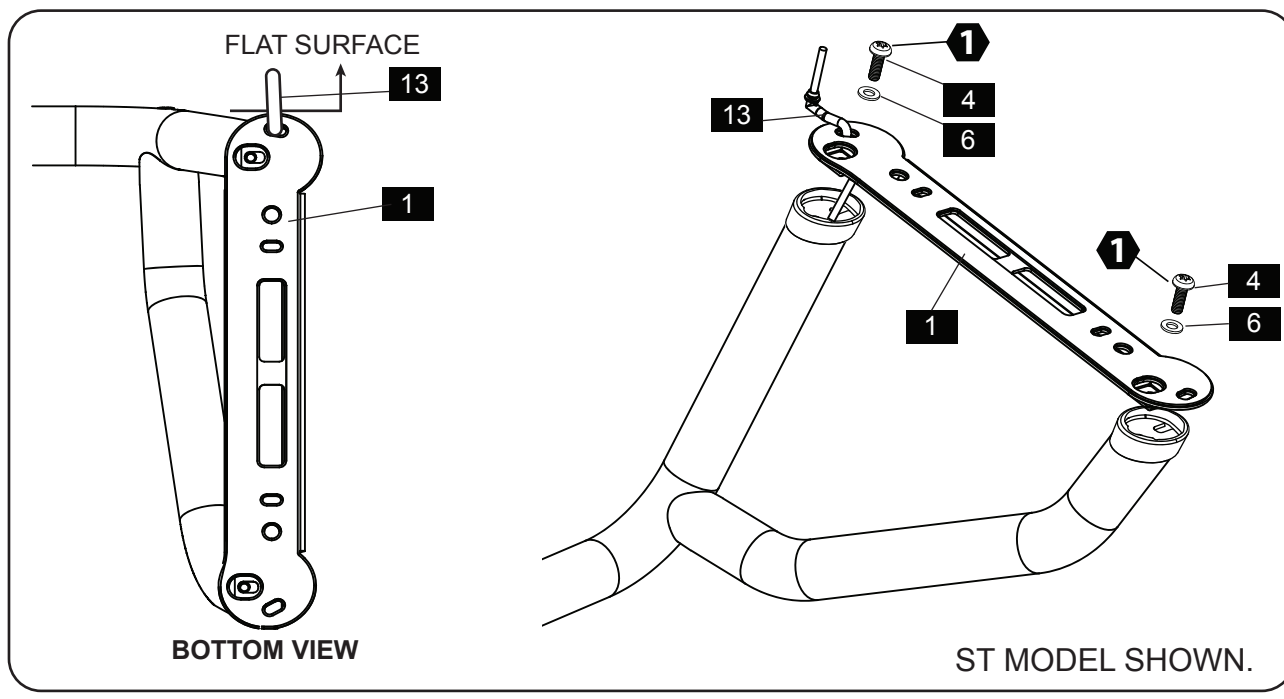
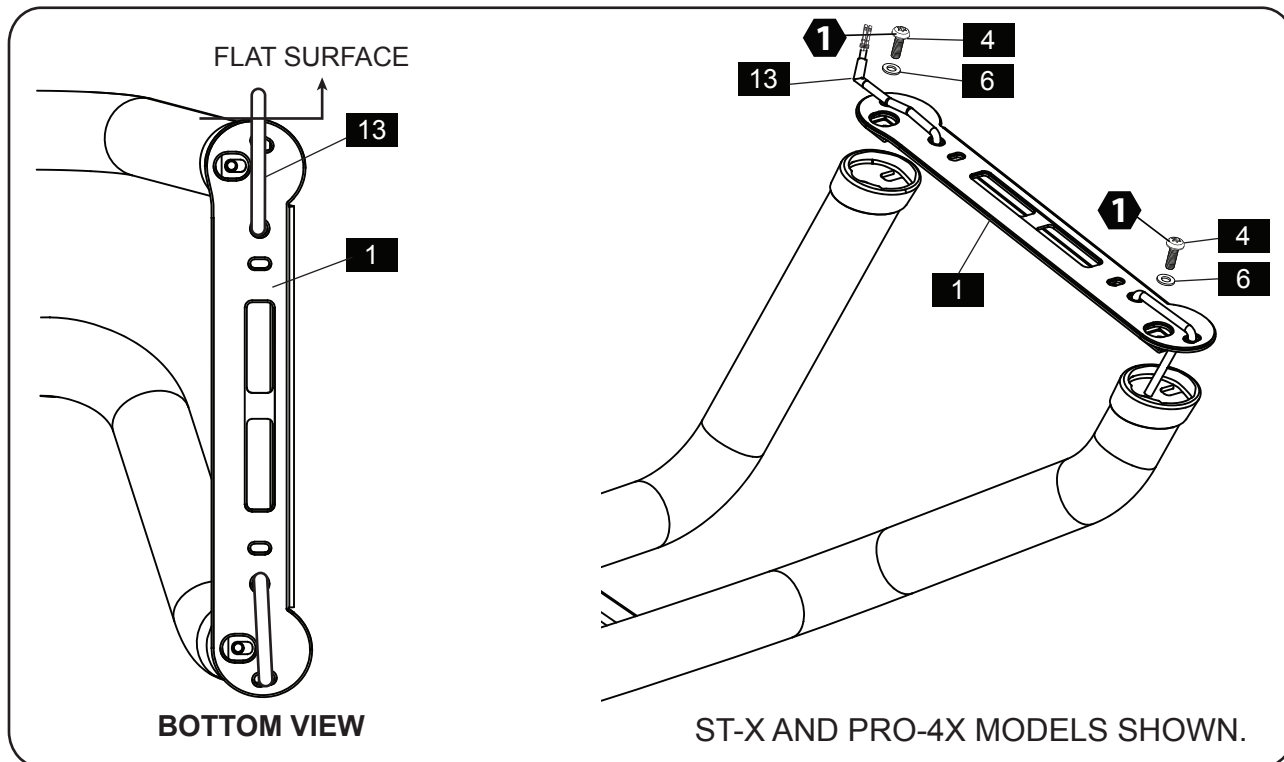
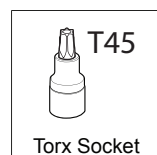
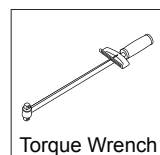
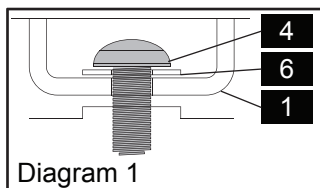
ST-X AND PRO-4X MODELS LHS ONLY.



ST MODEL LHS ONLY.



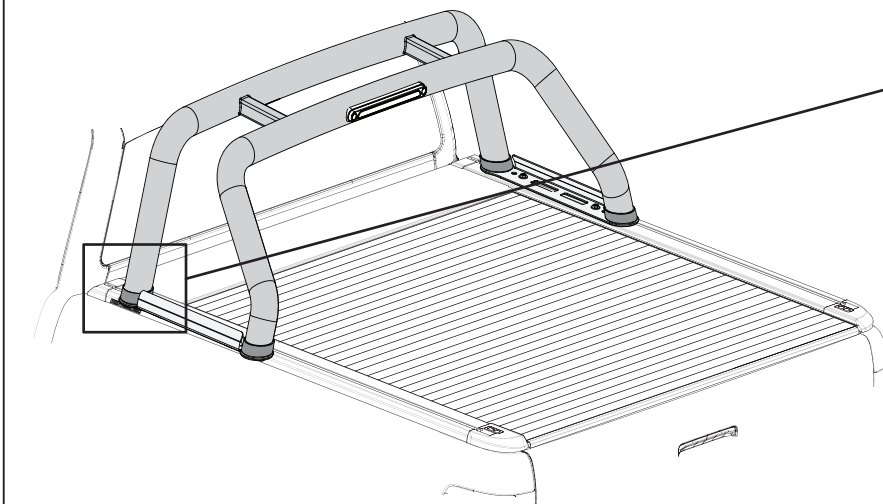
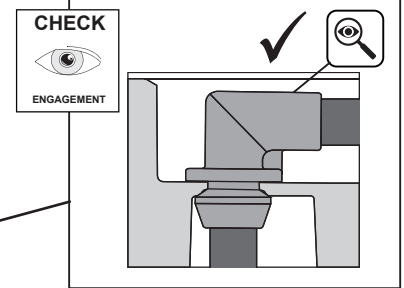
7. Connect both connectors and, based on Sportsbar variant, feed the loom inside through the hole to the respective Sportsbar leg until the connectors are fully inside the Sportsbar.



8. Place the LH Mount Plate (1) onto the Sportsbar with flat surface at the front of the Sportsbar. Using the Small Washers (6) and M10 Button Head Torx Screws (4), secure the LH Mount Place (1) to the Sportsbar as shown in the diagrams relevant to your model. Torque to 41Nm. Repeat on RHS.

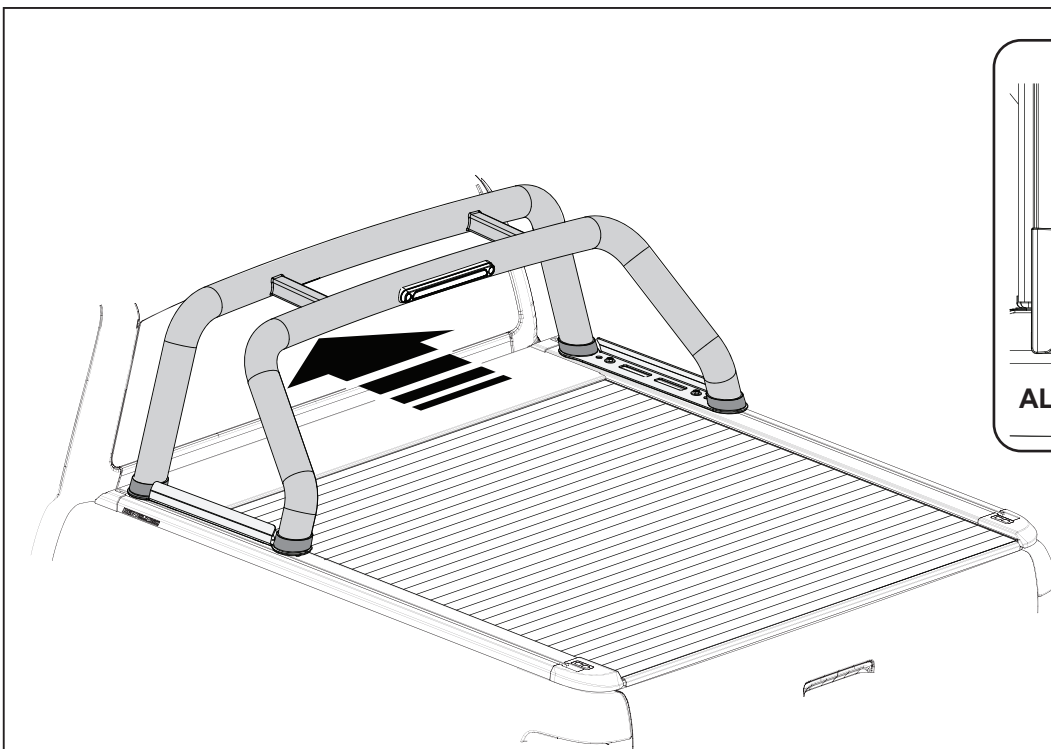
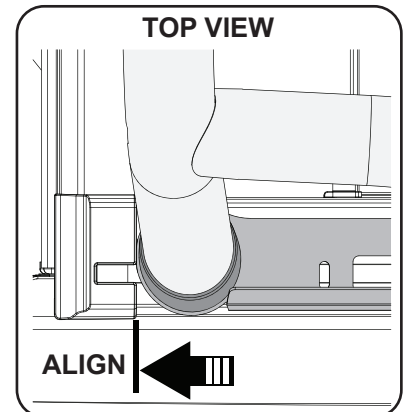
APPLICABLE TO ALL MODLES.

SECTION VIEW

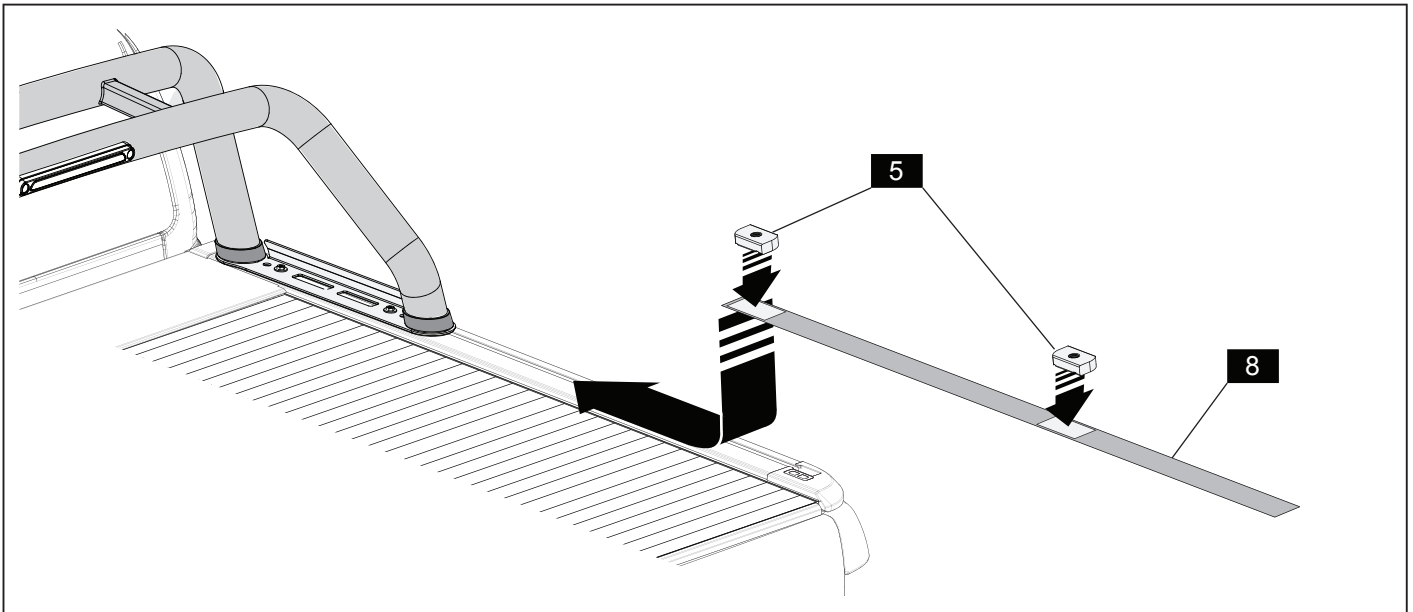


9. Position the Sportsbar above the tub and feed the Sportsbar loom through the hole in the LHS rail. Press the grommet into the hole in the side rail as shown ensuring that it is well seated. A trim removal tool can be used to seat the grommet. Lower the Sportsbar into position over the rail taking care not to pinch the cable. Ensure the cable is fed down into the bed of the tub.

TOP VIEW



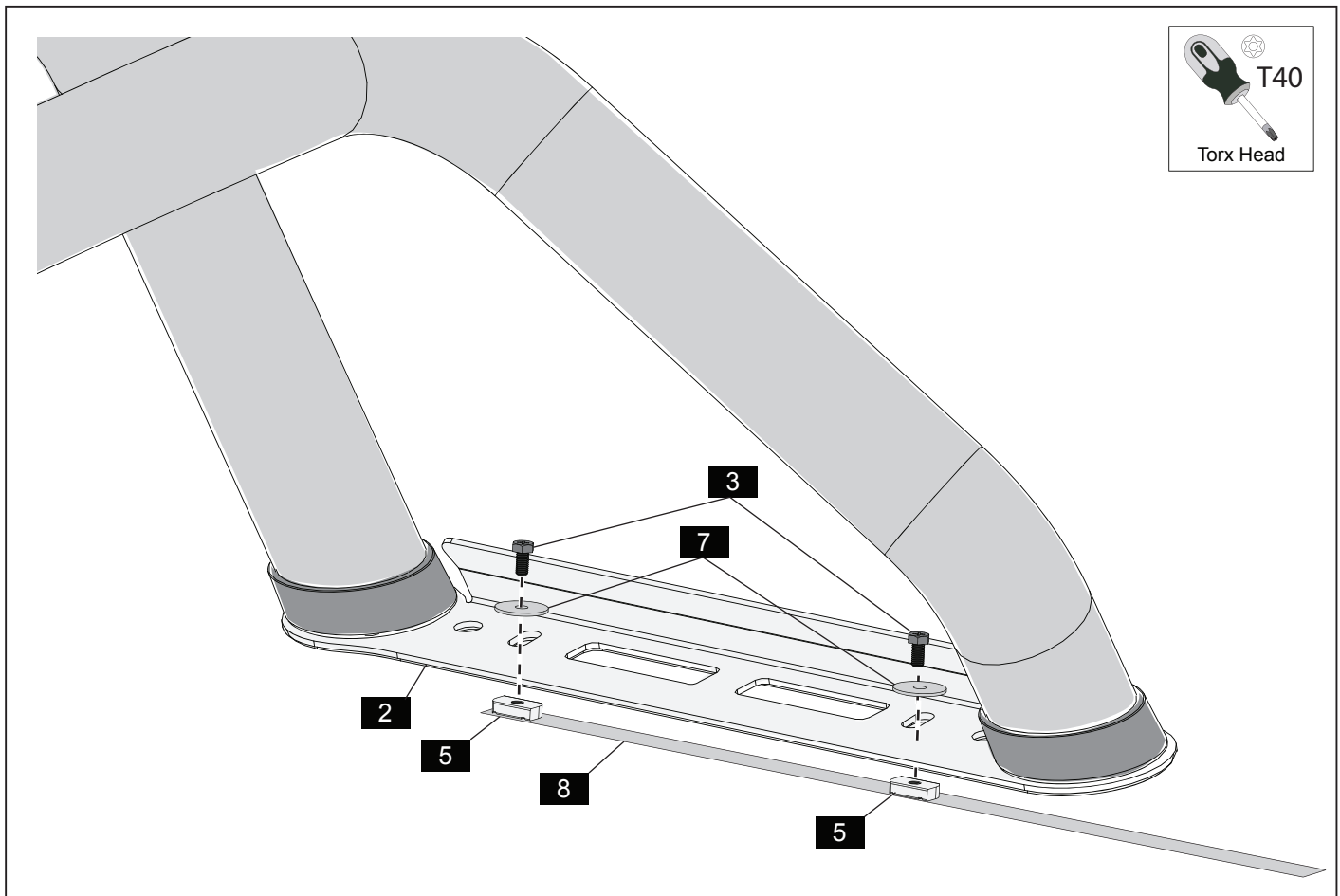
10. Position the Sportsbar such that the Mount Plates align to the RollTrac end caps.



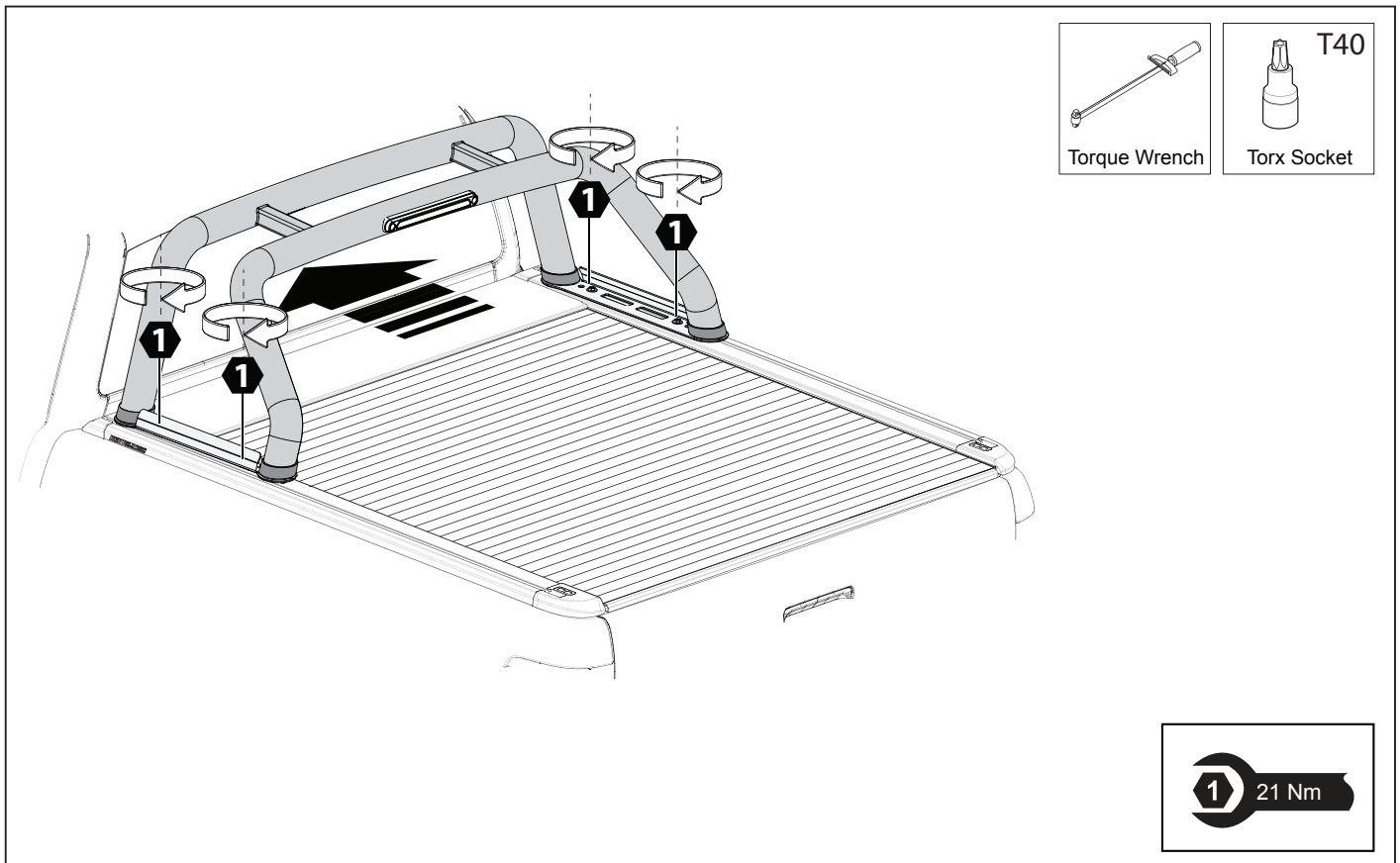
**11.** Insert the Installation Aid (8) into the T-Channel of the side rail. Slide two Slot Nuts (5) into the T-Channel and position them on top of the Installation Aid.

**Note:** The Installation Aid serves two purposes.

1. To assist in repositioning the Slot Nut under the Mount Plate.
2. Reduce the clearance between the Slot Nut and Mount Plate, ensuring the M8 Hex Head Bolt (3) is able to contact the Slot Nut thread.

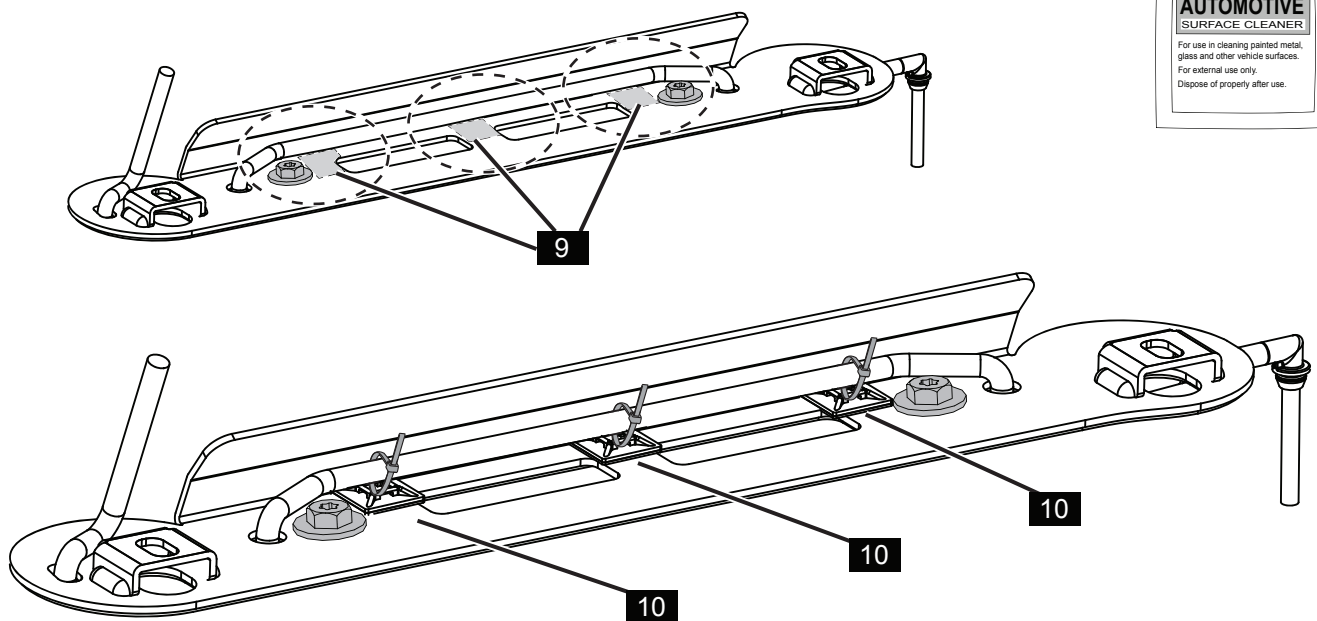


**12.** Reposition the Slot Nuts (5) inside the T-Channel using the Installation Aid (8) and align with the holes in the RHS Mount Plate (2). Loosely install the M8 Hex Head Bolts (3) and the Large Washers (7) through the RHS Mount Plate (2). Once both Bolts are finger tightened, remove the Installation Aid (8) from the T-Channel and repeat for the LHS.



13. Torque all M8 Hex Head Bolts (3) to 21Nm.

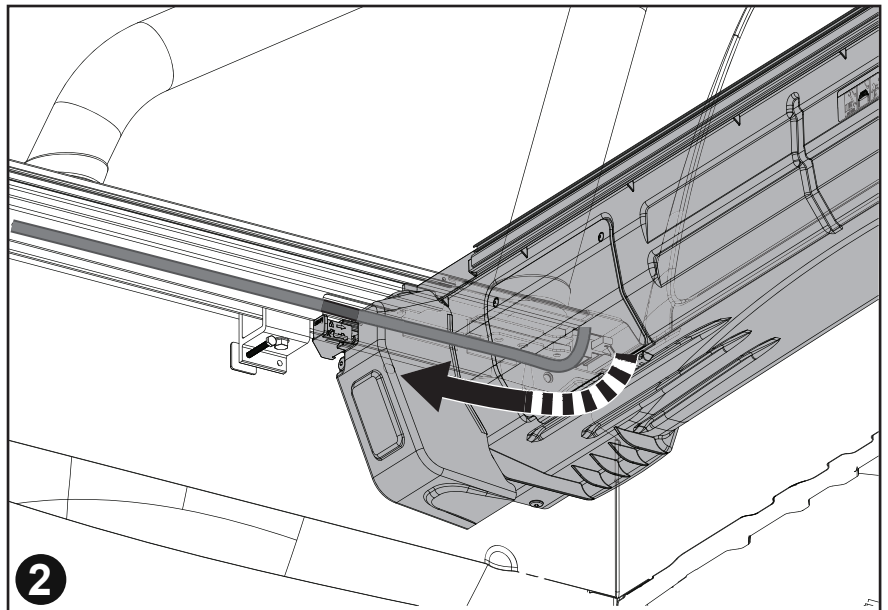
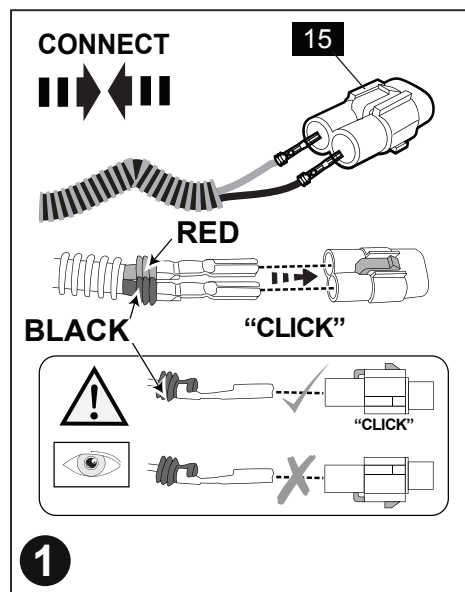
### ST-X AND PRO-4X MODELS LHS ONLY.



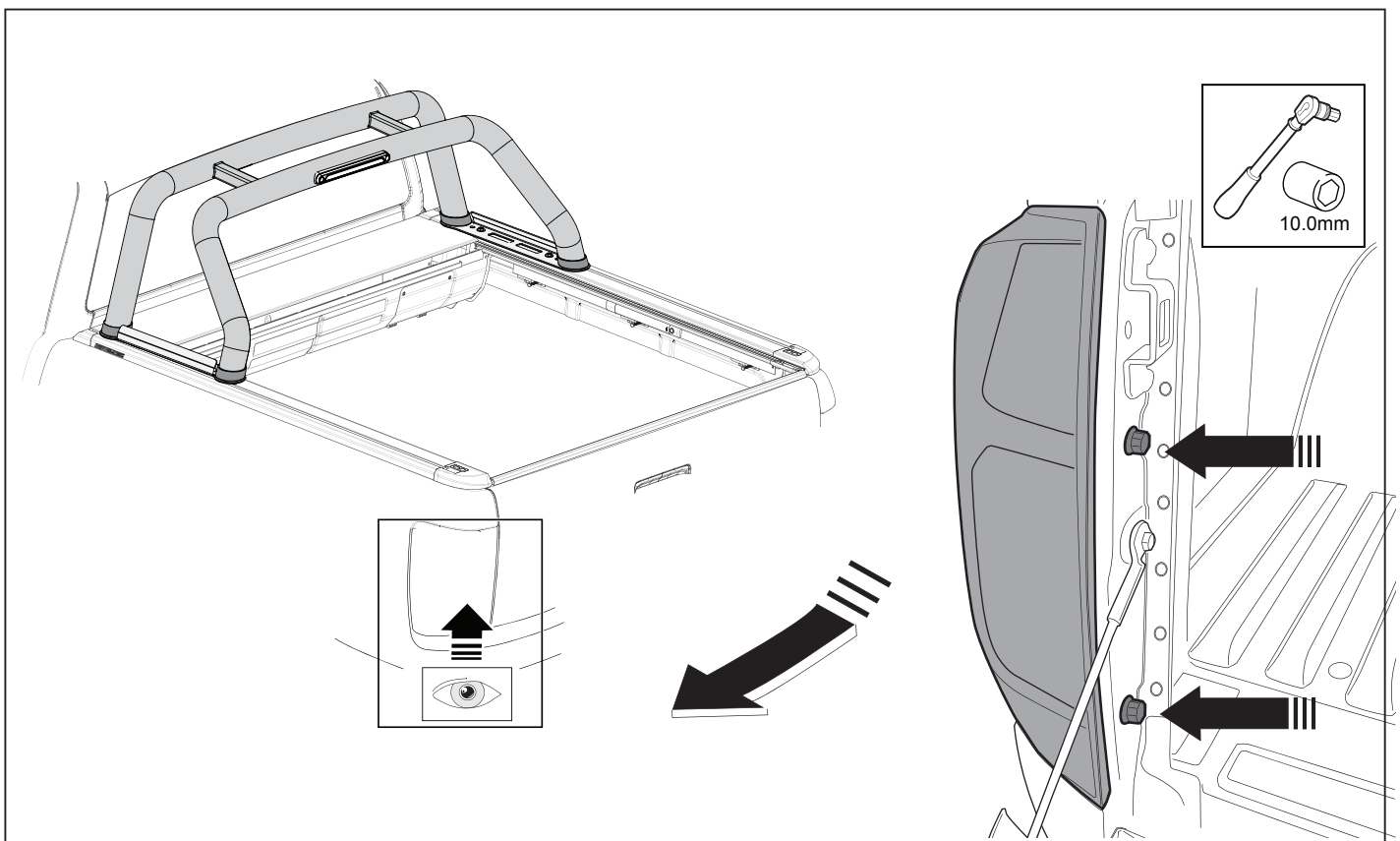
TUB, SPORTS BAR AND ROLLTRAC NOT SHOWN FOR CLARITY

14. Clean areas shown with Alcohol Wipe (9). Allow to dry. Remove the adhesive backing and place three provided Cable Tie Mounts (10) in the positions as shown. Secure the loom to the Cable Tie Mounts (10) using the Cable Ties (11). NOTE: Cable Tie Mounts (10) are not required for ST Model as Patch Harness (13) is routed differently as previously shown.

APPLICABLE TO ALL MODELS.

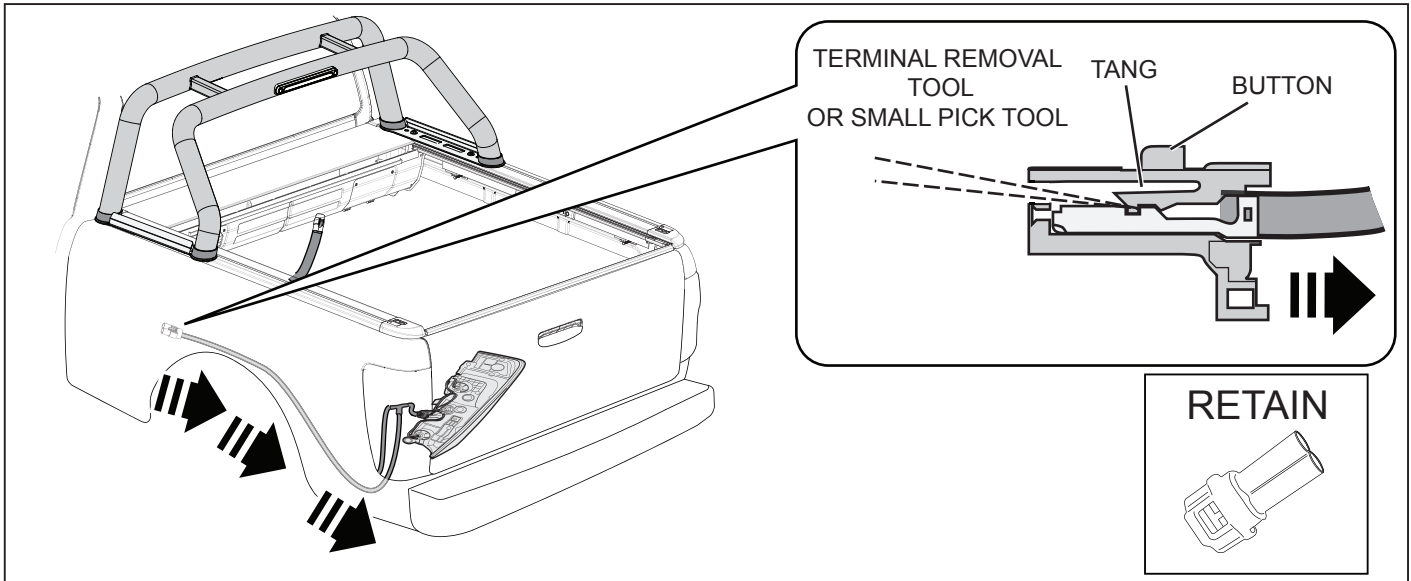


- 15.** Attach the Loose Female Connector (15) to the cable fed into the bed of the tub as shown. Route the loom wiring behind the RollTrac Housing, and along the wiring channel.

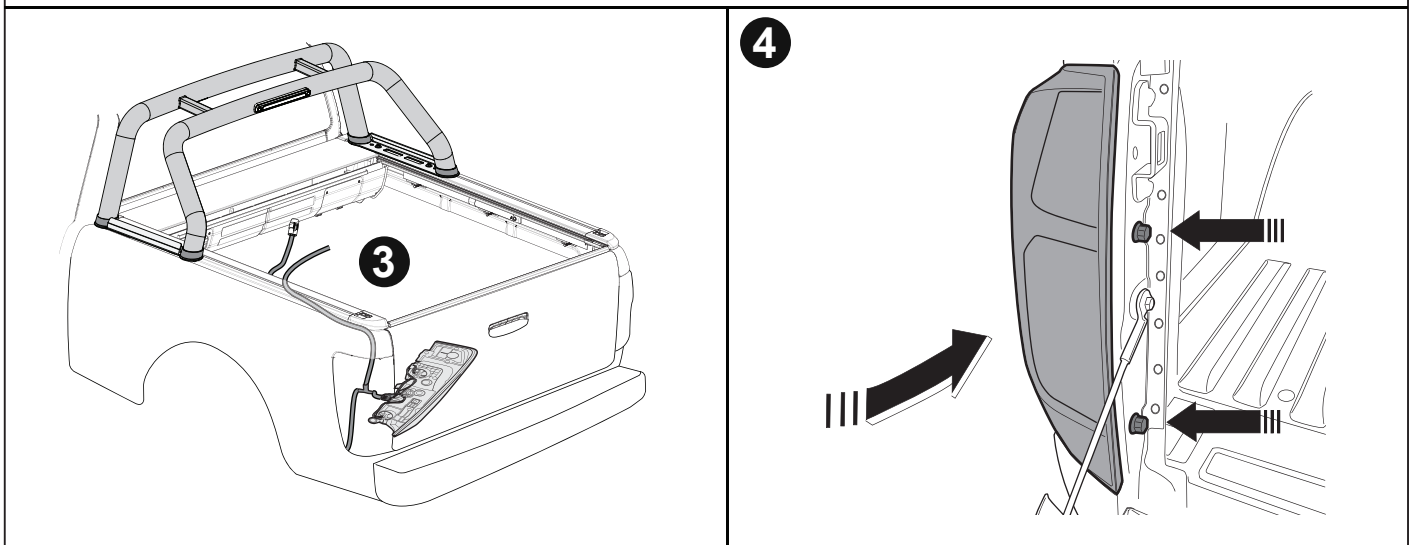
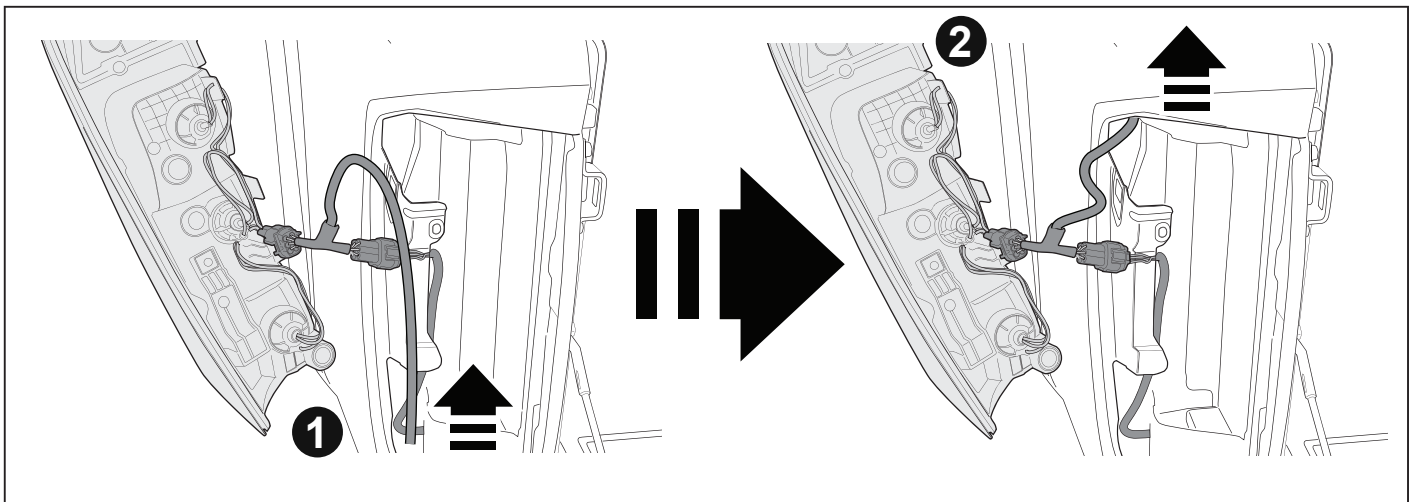


- NOTE:** Do not unplug any connectors in the rear tail lamp assembly.

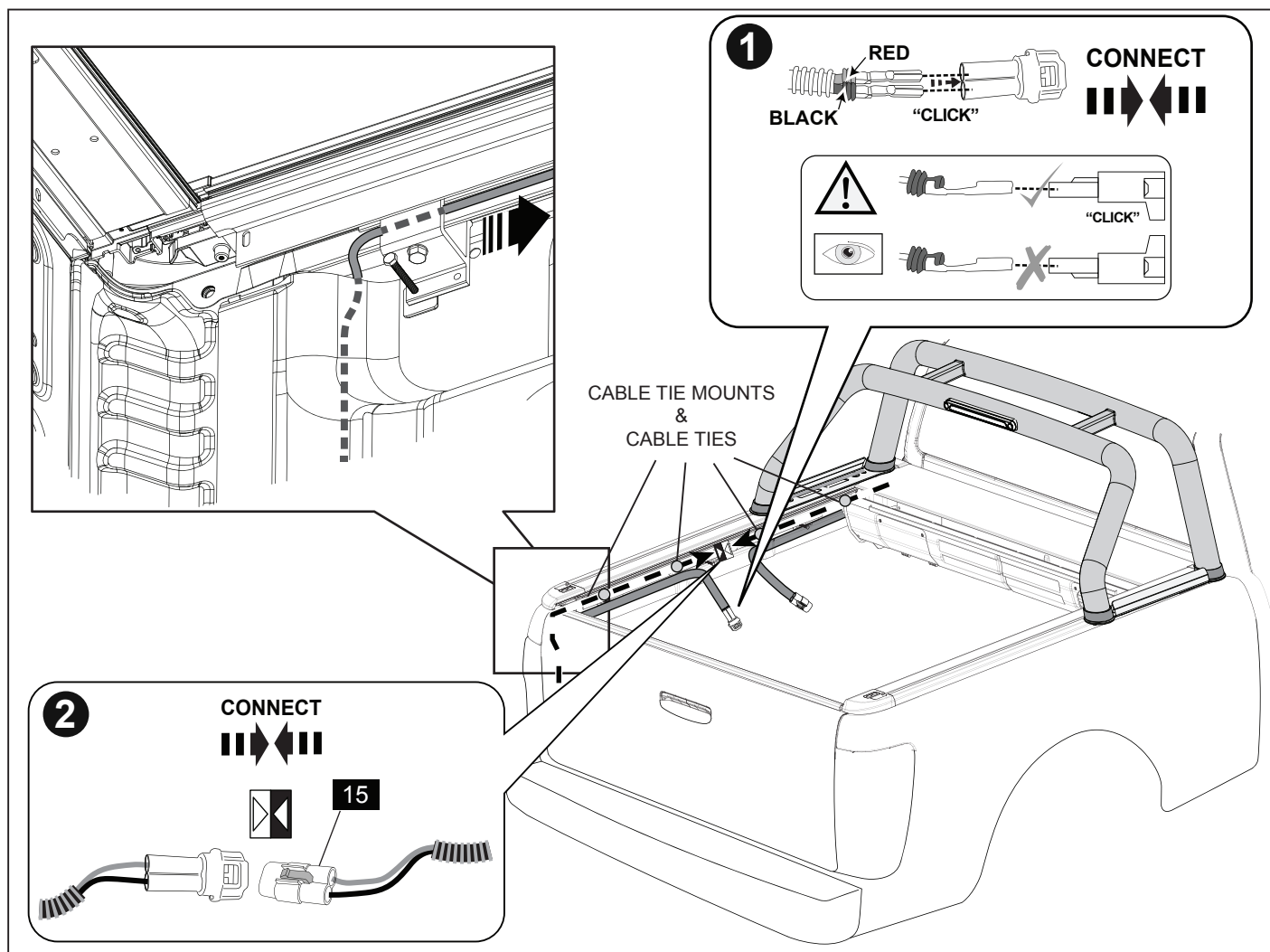




**17.** Locate and carefully re-route the pre-existing wiring adaptor loom which runs under the tub at the position shown. Re-route to directly under the LHS tail light. Remove pre-existing cable ties if required. Locate and carefully remove the wiring adaptor loom male connector using a terminal removal tool or small pick tool as shown in the Diagram. Retain the connector housing for use in Step 19.

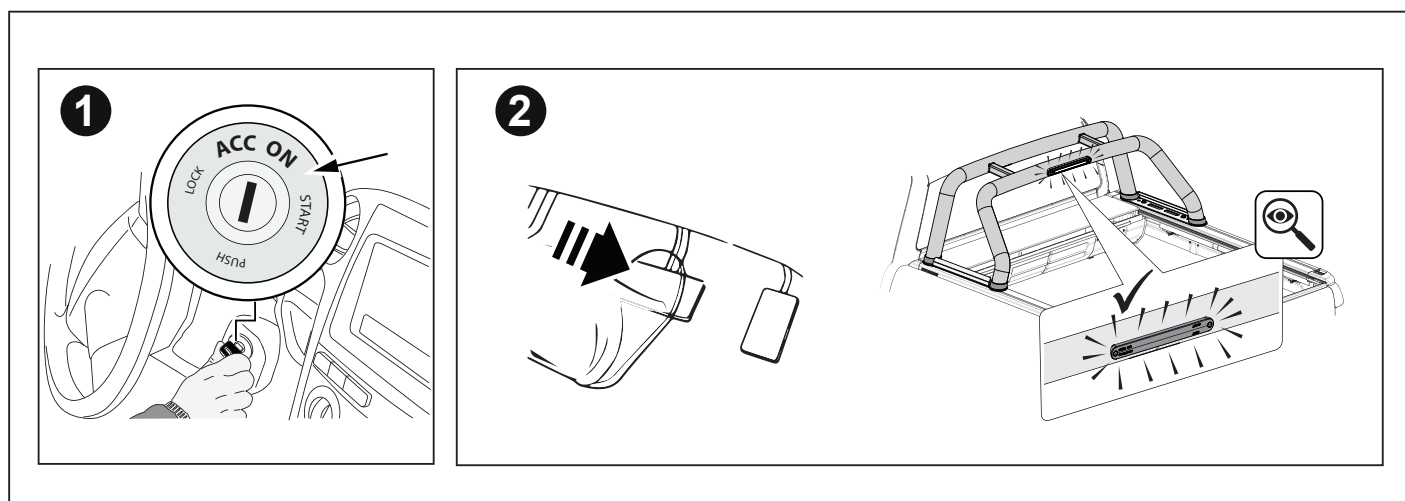


**18.** Route the wiring adaptor with the exposed terminals into the tail light compartment, up through the opening at the top as shown in the sequence above. Refit the LHS tail lamp back and secure using the retained bolts from Step 16. Refer to manufacturer manual for tail lamp bolt torque settings.



**19.** Attach the retained connector to wiring adaptor loom as shown. Route the wiring adaptor loom along the full length of the RollTrac. Secure the pre-existing wiring loom to the RollTrac at various points using the Cable Ties (11) and Cable Tie Mounts (10). Loop any excess pre-existing wiring adaptor loom and secure with Cable Ties (11).

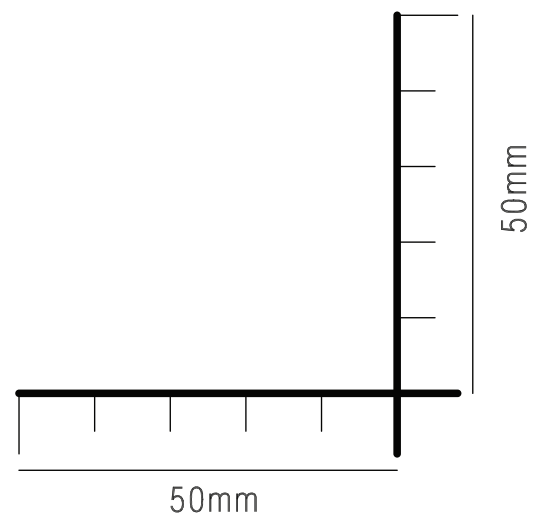
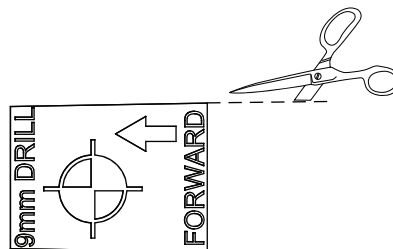
**IMPORTANT:** Match the wire colours of the wiring adaptor loom with the wires from Patch Harness (13) to ensure correct alignment when fitting.



**20.** Power up accessories on vehicle, depress the brake pedal and check the function of the LED brake light on the Sportsbar.



## DRILL TEMPLATE LHS HAND SIDE



Sheet Size: A4  
Scale: 1:1



**Important**  
Always confirm the length of the 50mm  
marker before cutting out the templates.