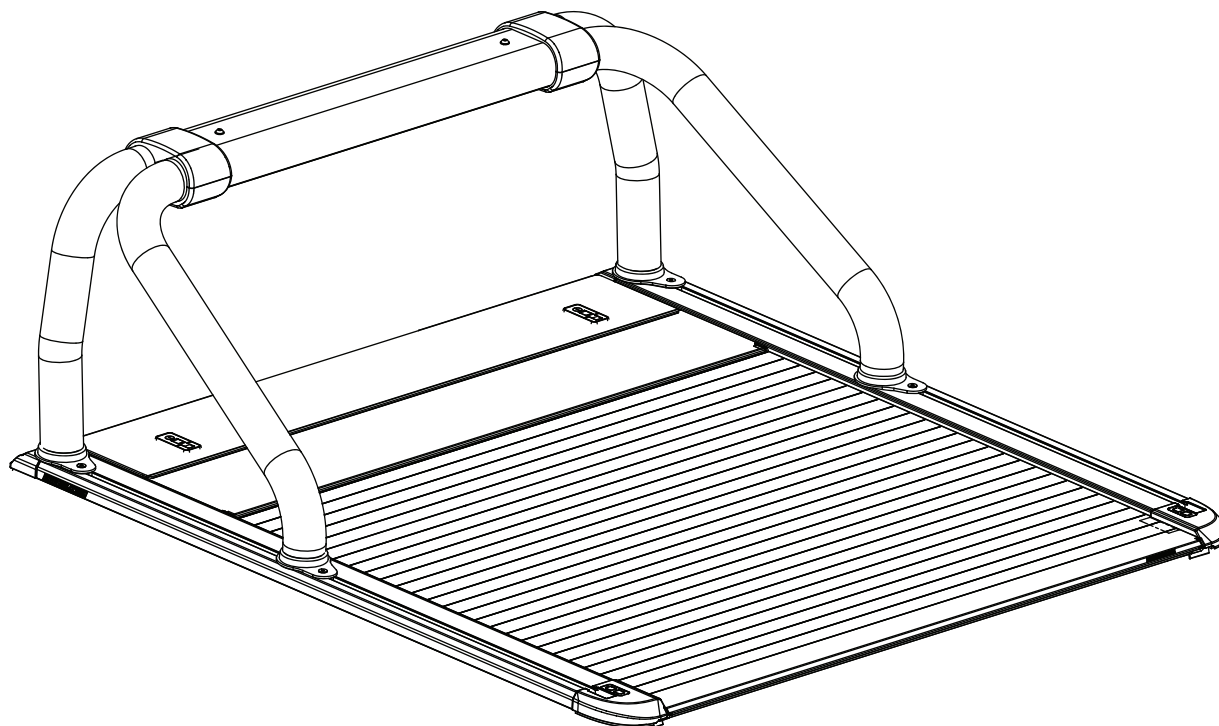


JEE GLAD

Rolltrac Sports Bar Installation Instructions



Installation Time: Approx. 30 mins

Place these instructions in vehicle's glove box after installation is complete

General Notes

- Read through the fitting instructions before installation of accessory.
- Always install the accessory following the fitting instructions. Failure to do so may cause damage to the vehicle or the accessory.
- Ensure all recyclable discarded vehicle accessory components and packaging are recycled following local recycling regulations.
- It is always recommended that this accessory is fitted by a qualified Technician.
- Safely store and protect any removed vehicle components.
- Ensure all bare metal surfaces are protected using Automotive Bare Metal Primer and touch-up paint.
- Please check content of kit using this list and subsequent sketches.
- Remove all metal swarf and dust from all vehicle surfaces if surface is used for accessory installation.

Safety Notes

- Check that all work practices comply with safety standards.
- Please wear appropriate clothing and use safety equipment.



Care Instructions:



Clean with mild detergent and water solution.

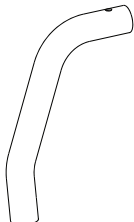


Do not use abrasive cleaners or solvents.

PARTS LIST

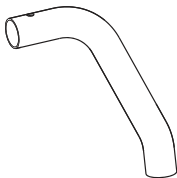


1



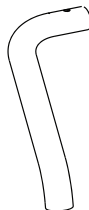
LH Front Leg
Qty - 1

2



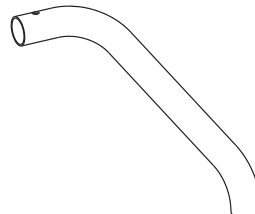
RH Front Leg
Qty - 1

3



LH Rear Leg
Qty - 1

4



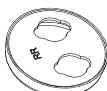
RH Rear Leg
Qty - 1

5



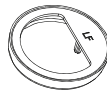
LH Rear Footcup
Qty - 1

6



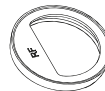
RH Rear Footcup
Qty - 1

7



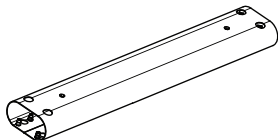
LH Front Footcup
Qty - 1

8



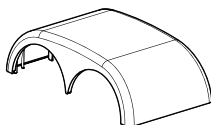
RH Front Footcup
Qty - 1

9



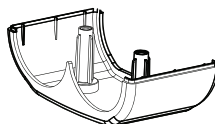
Centre Piece
Qty - 1

10



Cover Cap Upper
Qty - 2

11



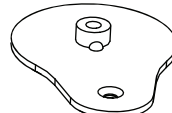
Cover Cap Lower
Qty - 2

12



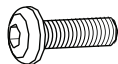
Front LH Mount Bracket
(With Hole)
Qty - 1

13



Foot Leg Mount Bracket
Qty - 3

14



M8 x 30 mm
Pan Head Screw
Qty - 8

15



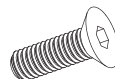
M5 Square Nut
Qty - 4

16



M5 x 85 Pan Head
Phillips Screw
Qty - 4

17



M8 x 30 Countersunk
Screw
Qty - 4

18



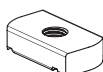
Large Washer (35mm)
Qty - 2

19



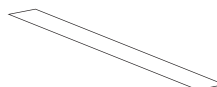
M8 x 16mm Countersunk
Screw
Qty - 4

20



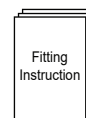
Slot Nut
Qty - 4

21



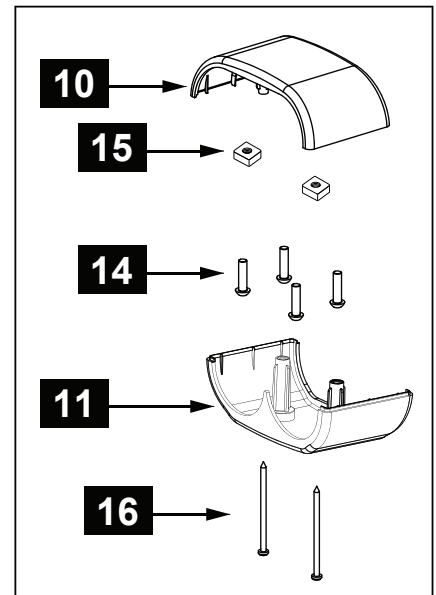
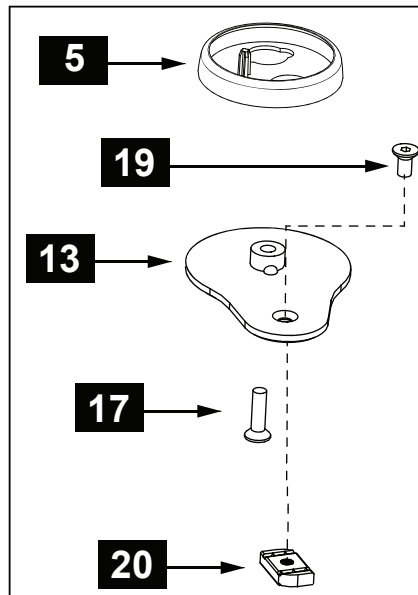
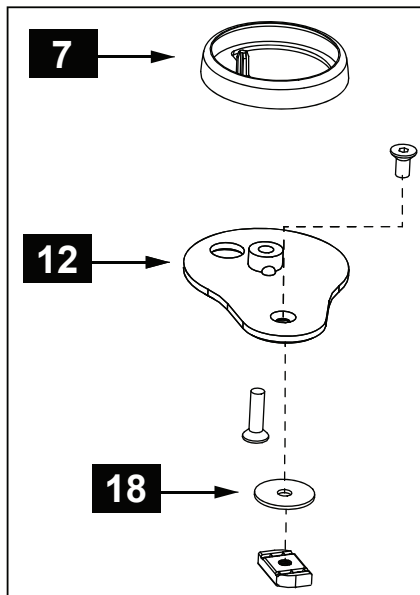
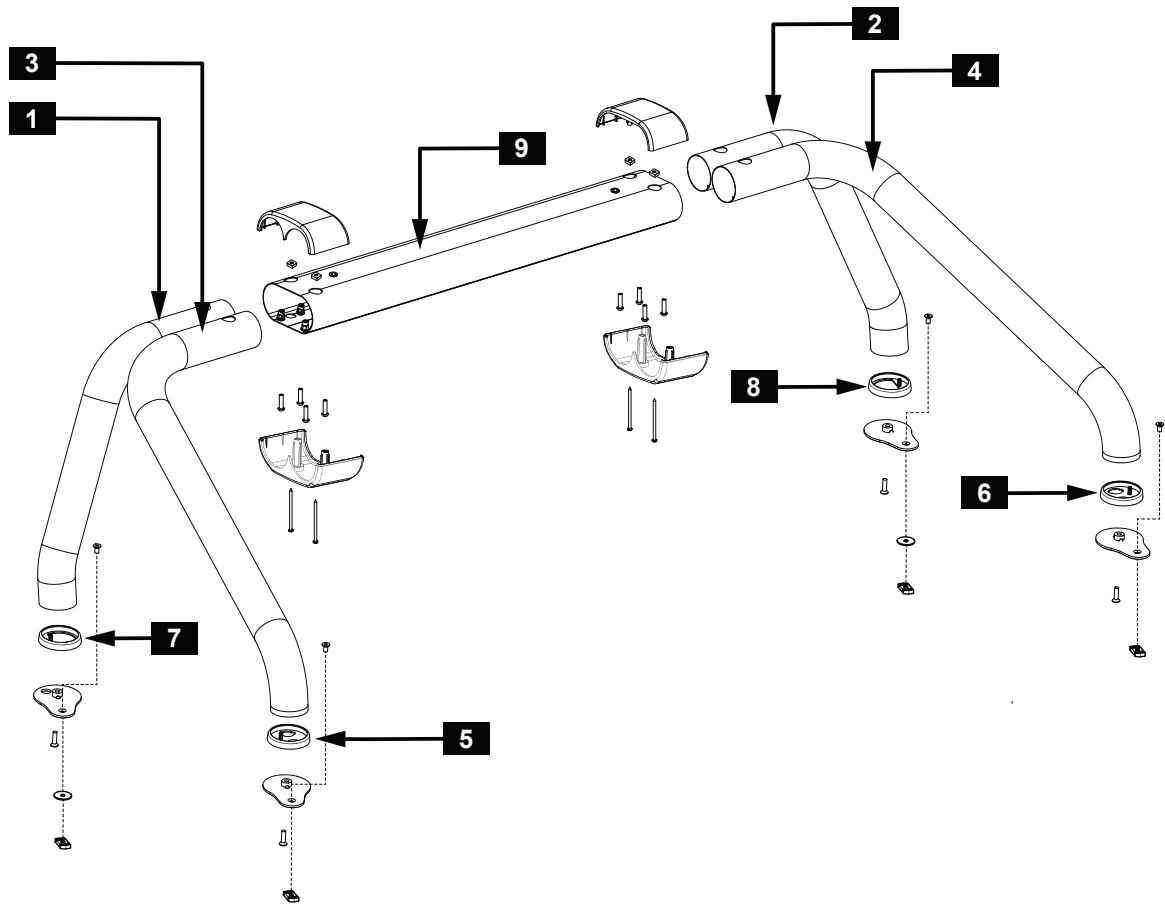
Installation Aid
Qty - 2

22

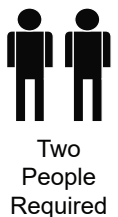
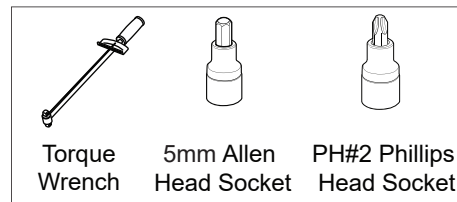


Fitting Instructions
Qty - 1

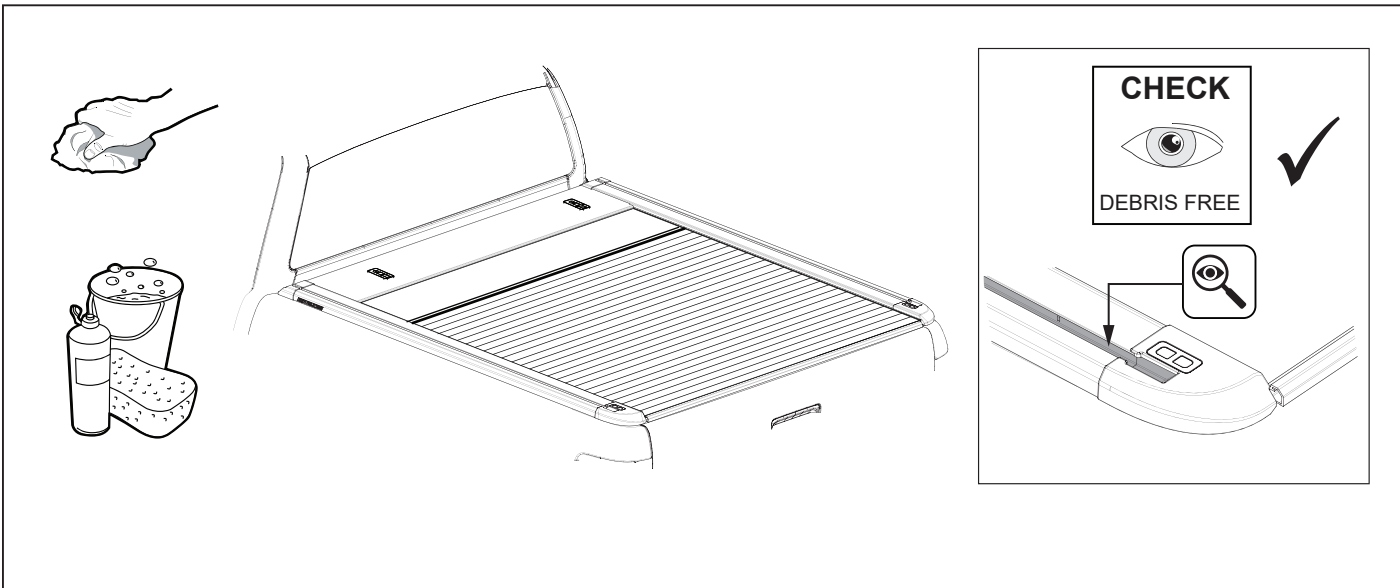
EXPLODED DRAWING AND REQUIRED TOOLS



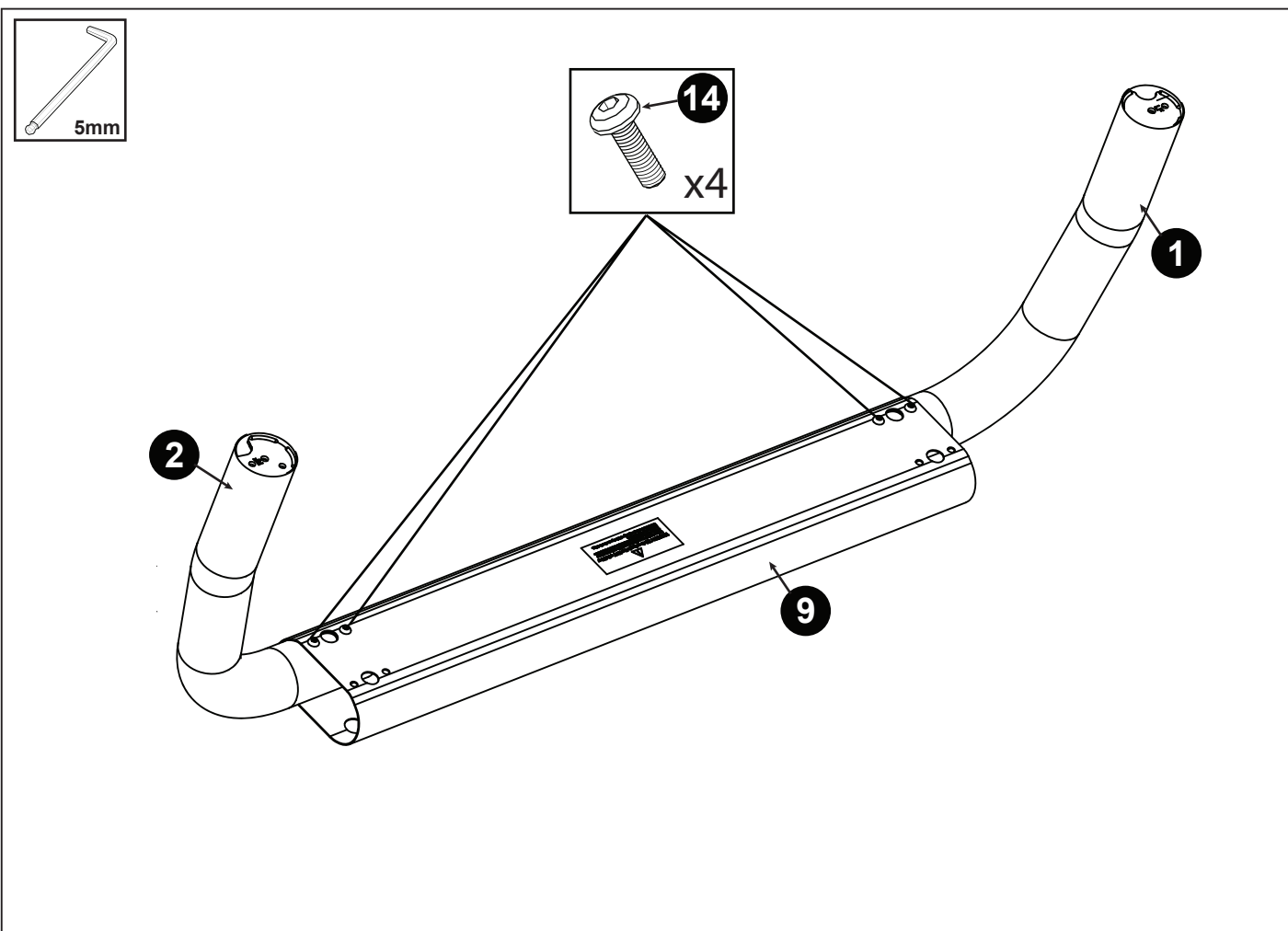
TOOLS REQUIRED



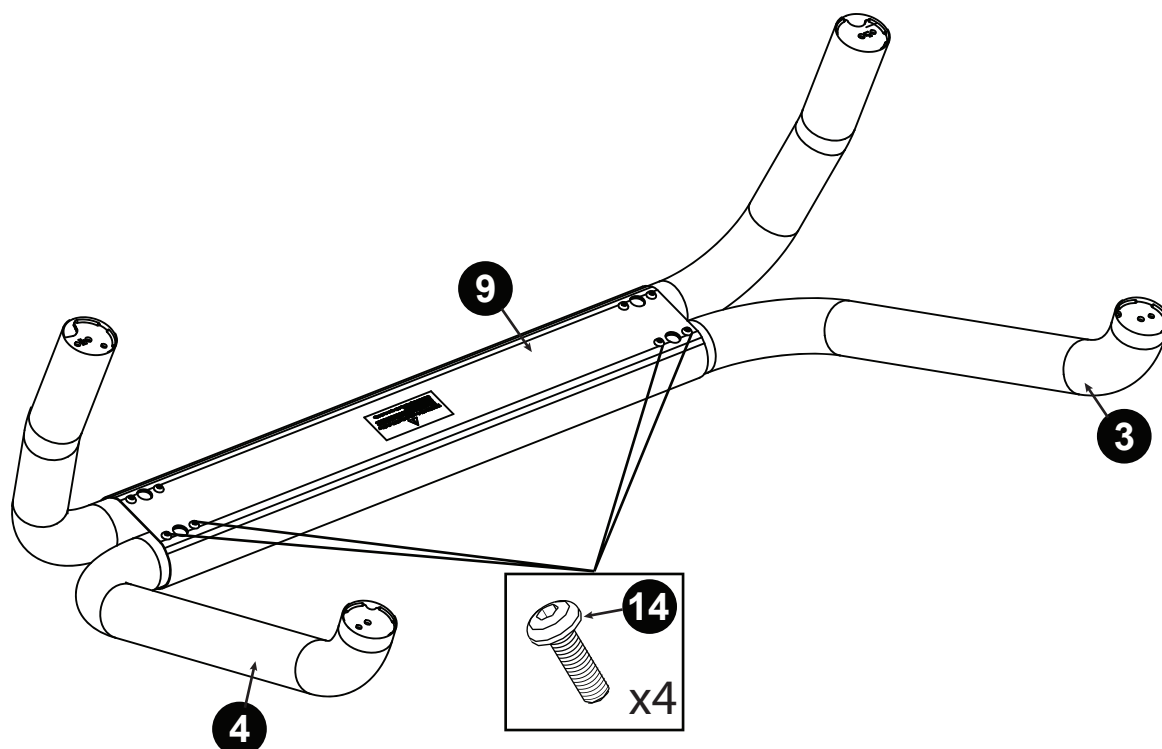
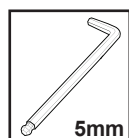
INSTALLATION INSTRUCTIONS



1. Prepare the surface of the RollTrac side rails by cleaning them thoroughly ensuring that any debris in the RollTrac side rail T-channels is completely removed.



2. Position the Center Piece (9) on a soft surface or mat with the warning label facing towards you as shown. Install the LH Front Leg (1) and the RH Front leg (2) into the forward half of the Center Piece (9) and loosely fasten M8 Hex Pan Head Screws (14).
NOTE: Do not tighten screws fully.
NOTE: Refer to the stamped letter on the tube end, FL - Front left & FR - Front Right



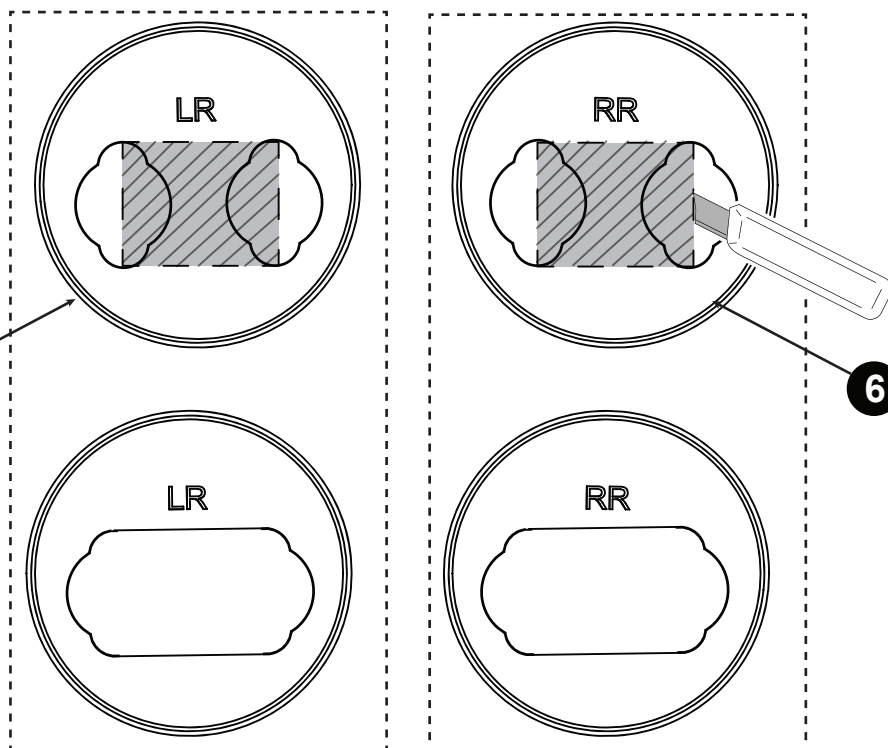
3. Install LH Rear Leg (3) and RH Rear Leg (4) into the rear half of the Centre Piece (9) and fasten using M8 Hex Pan Head Screws (14).
NOTE: Do not tighten screws fully.



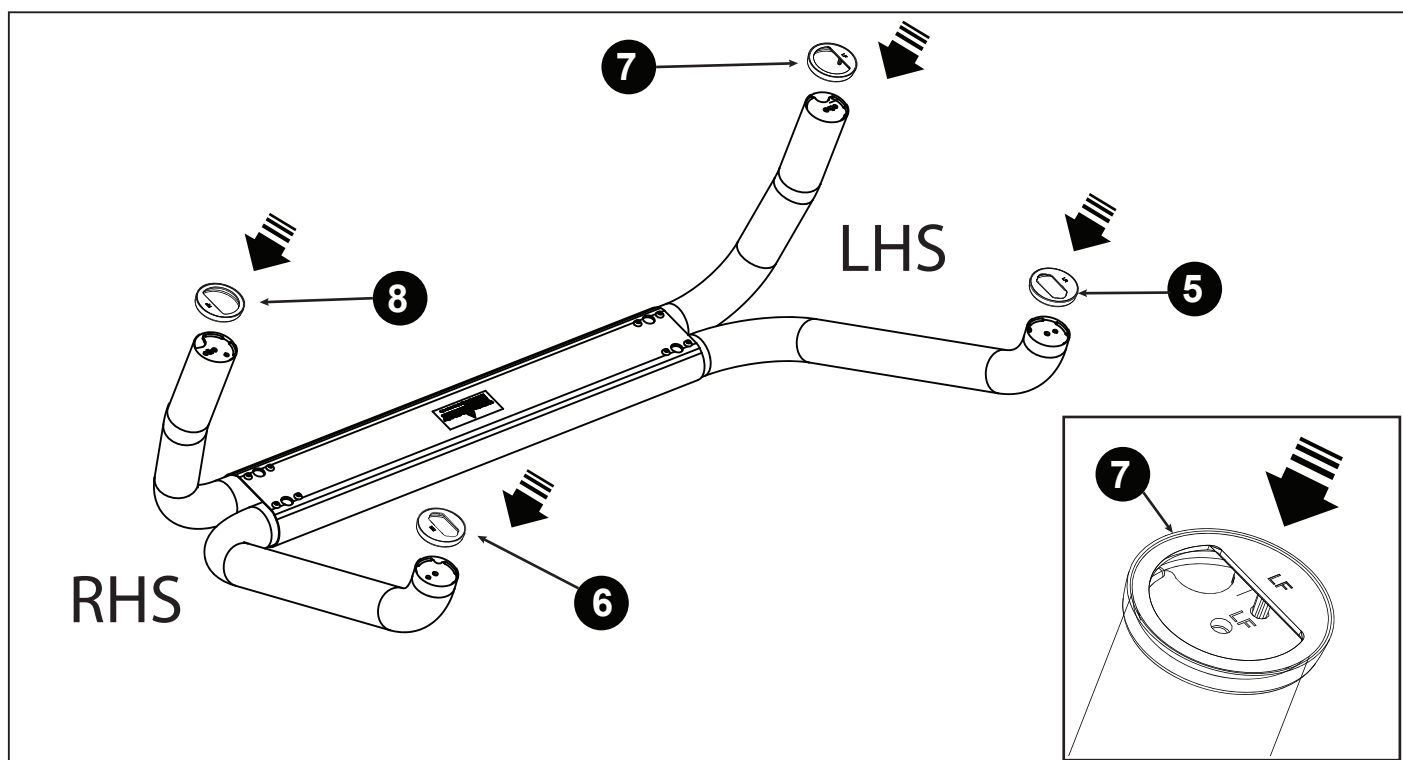
BEFORE

5

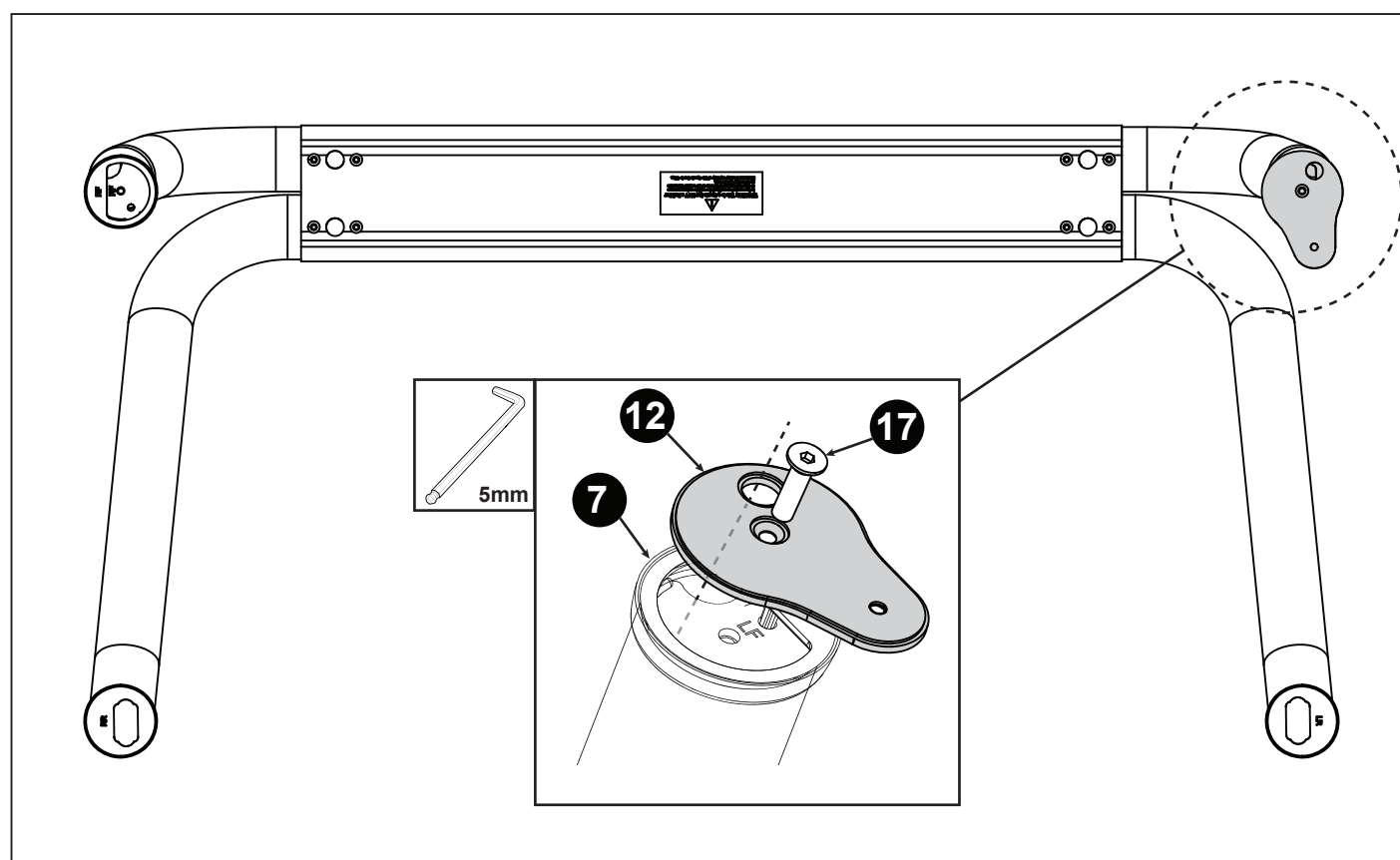
AFTER



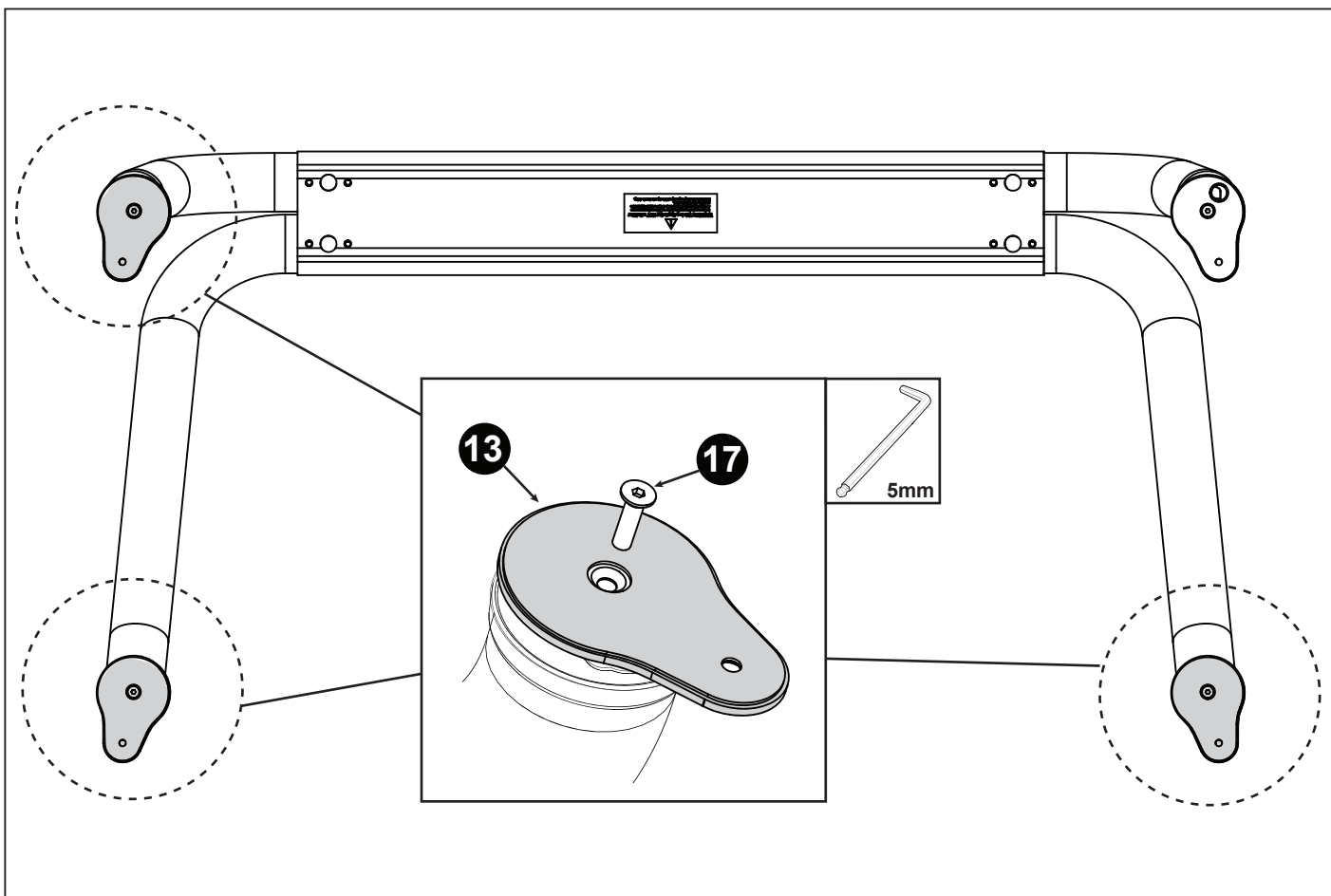
4. Locate the LH Rear Footcup (5) and RH Rear Foot Cup (6).
Mark then cut the Foot Cups as shown and discard the cut out sections (shown above).



5. Push all four rubber Foot Cups onto the corresponding foot of the Sportsbar by aligning the Foot Cup leg to the tube as shown.



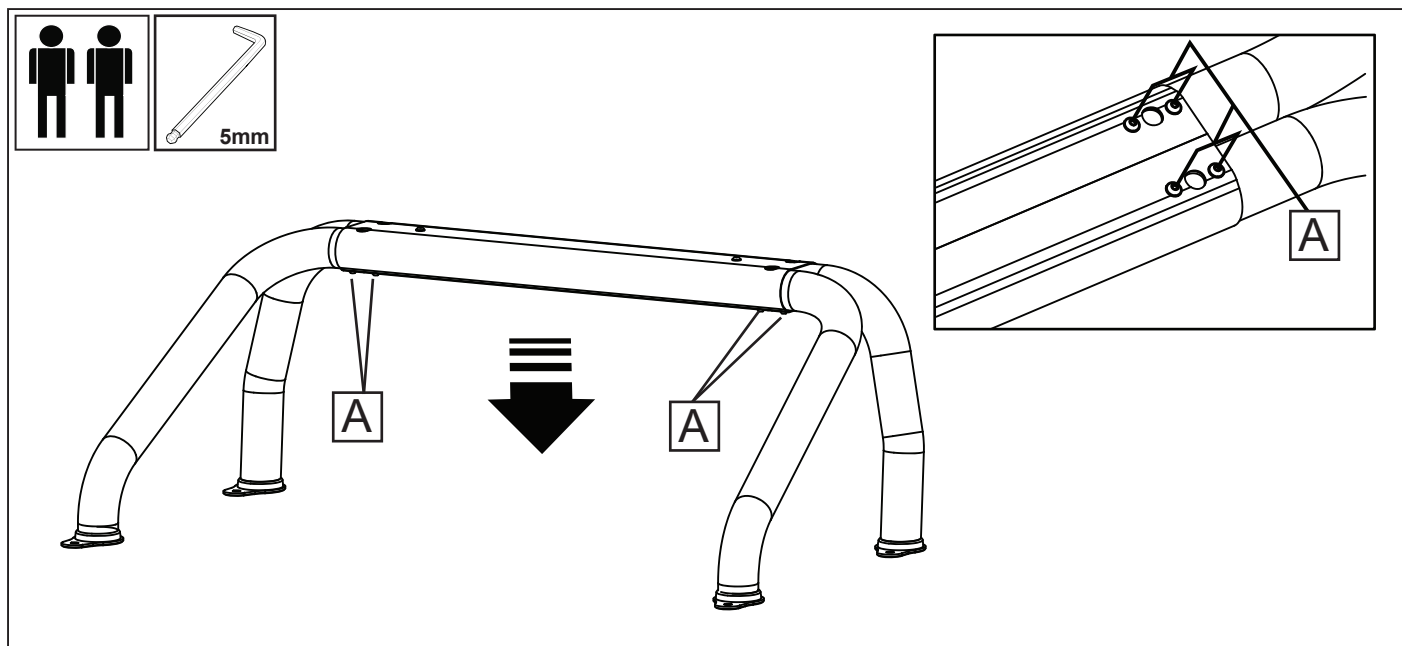
6. Install the Front LH Mount Bracket (12) (With Hole) by aligning the hole to the Sportsbar foot end over the Foot Cup as shown and secure using the M8 Countersunk screw (17).
 NOTE: Do not tighten screw fully.
 NOTE: Ensure the Mount Bracket (12) (With Hole) is used.



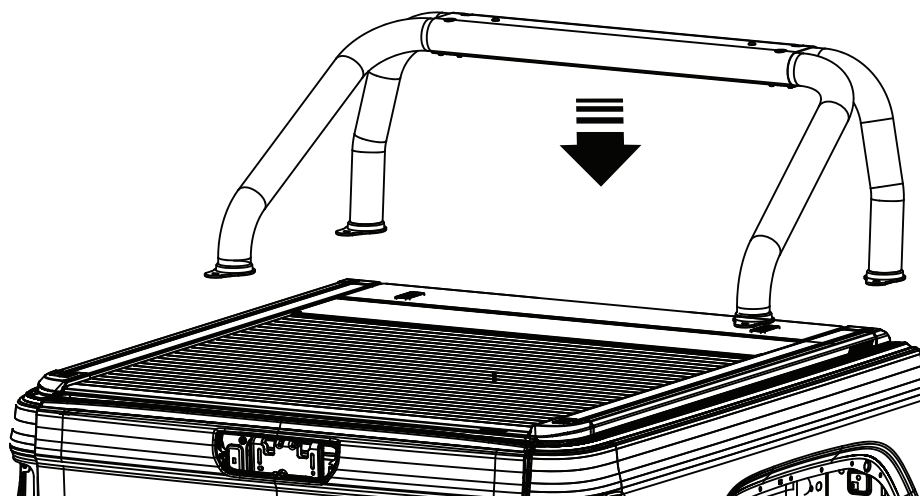
7. Install the remaining Mount Brackets (13) to the Sportsbar foot ends over the Foot Cups and secure using the M8 Countersunk screws (17).

NOTE: Do not tighten the screws fully.

NOTE: The three Mount Brackets (13) are identical.

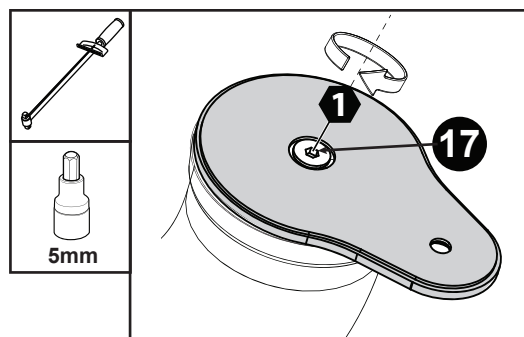
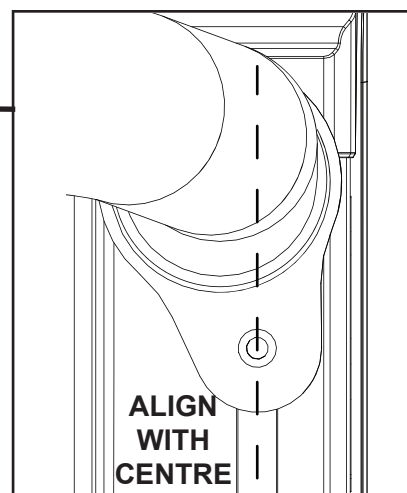
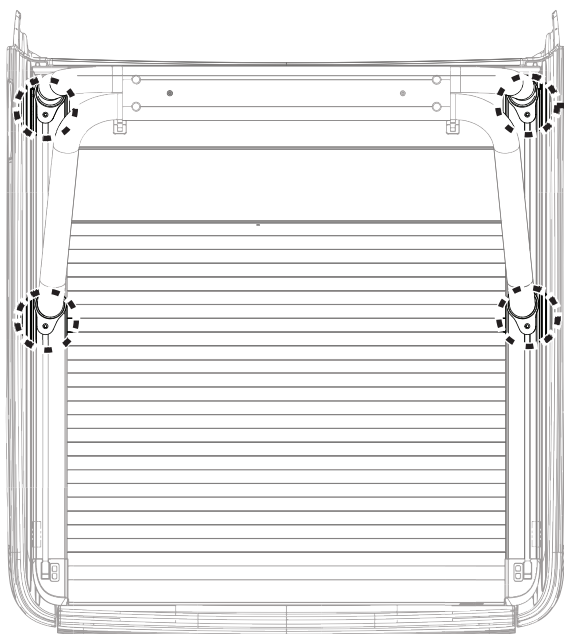


8. Using two people, carefully lift the Sportsbar and place it on a flat surface to make sure the legs are level. Adjust tubes if required by loosening the screws (A).



9. Using two people, carefully lift the Sportsbar assembly above the RollTrac and carefully lower the Sportsbar assembly over the RollTrac side rail.

NOTE: Take caution when lifting Sportsbar assembly. Items such as rings, watches and belt buckles may damage the finish.

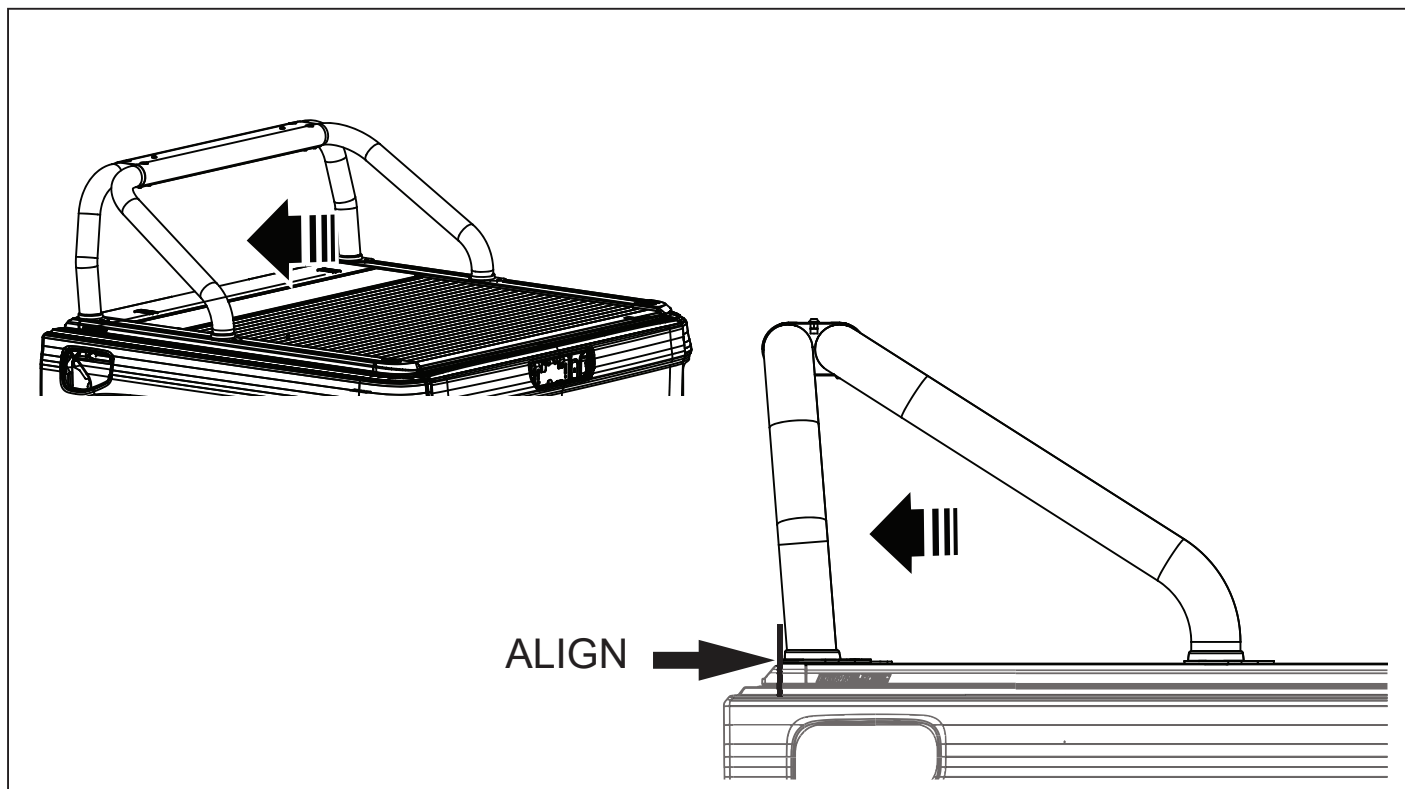


10. Rotate the 4 Mount Brackets and align the holes to the Rolltrac Side rail T-Channel as shown. Once the Mount Bracket holes are aligned with the T-Channel, carefully lift up the sports bar and **torque the screws to 27Nm**.

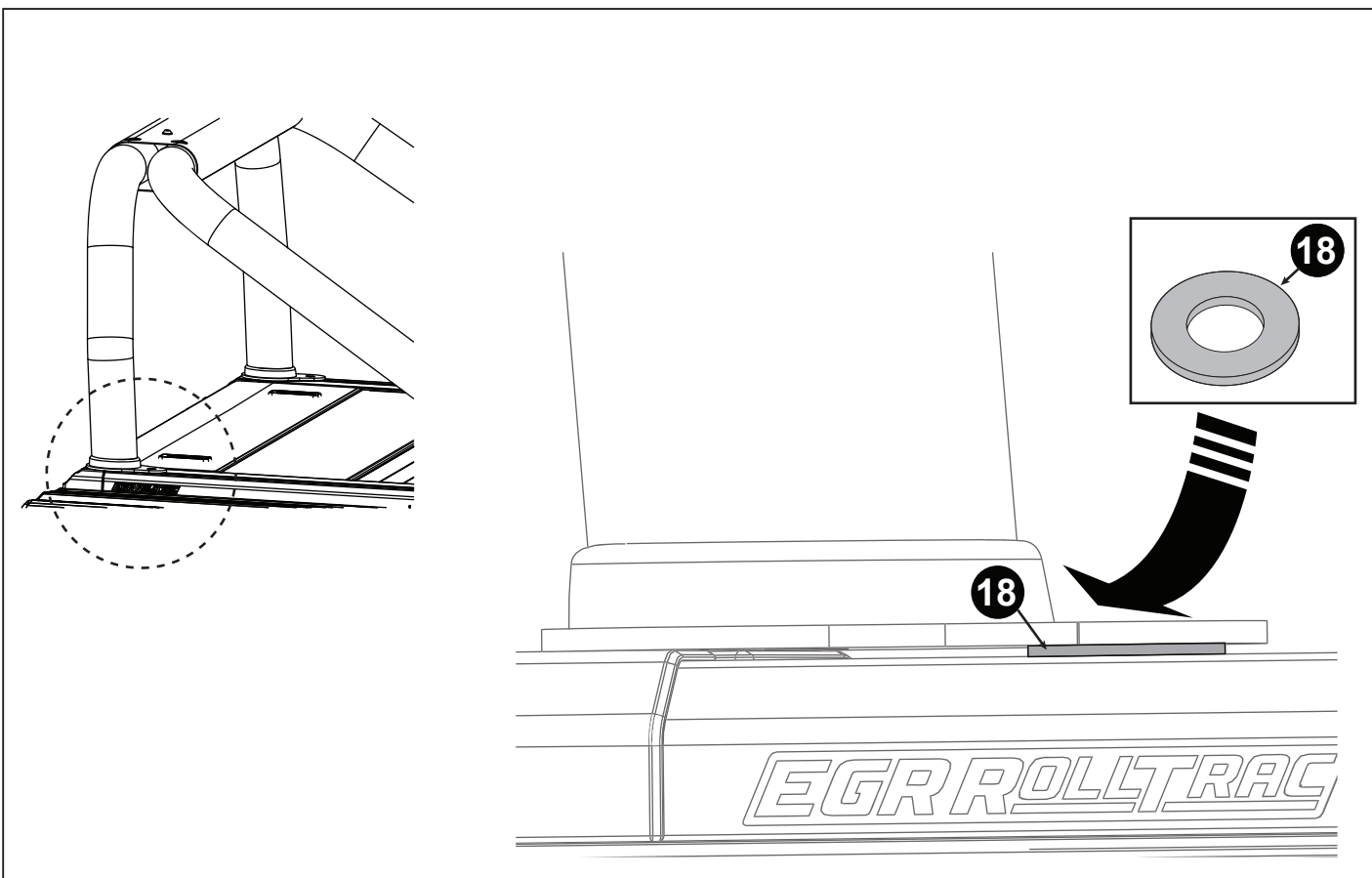
NOTE: Two people will be required to secure and torque the Mount Brackets.

NOTE: Take caution to not damage vehicle.

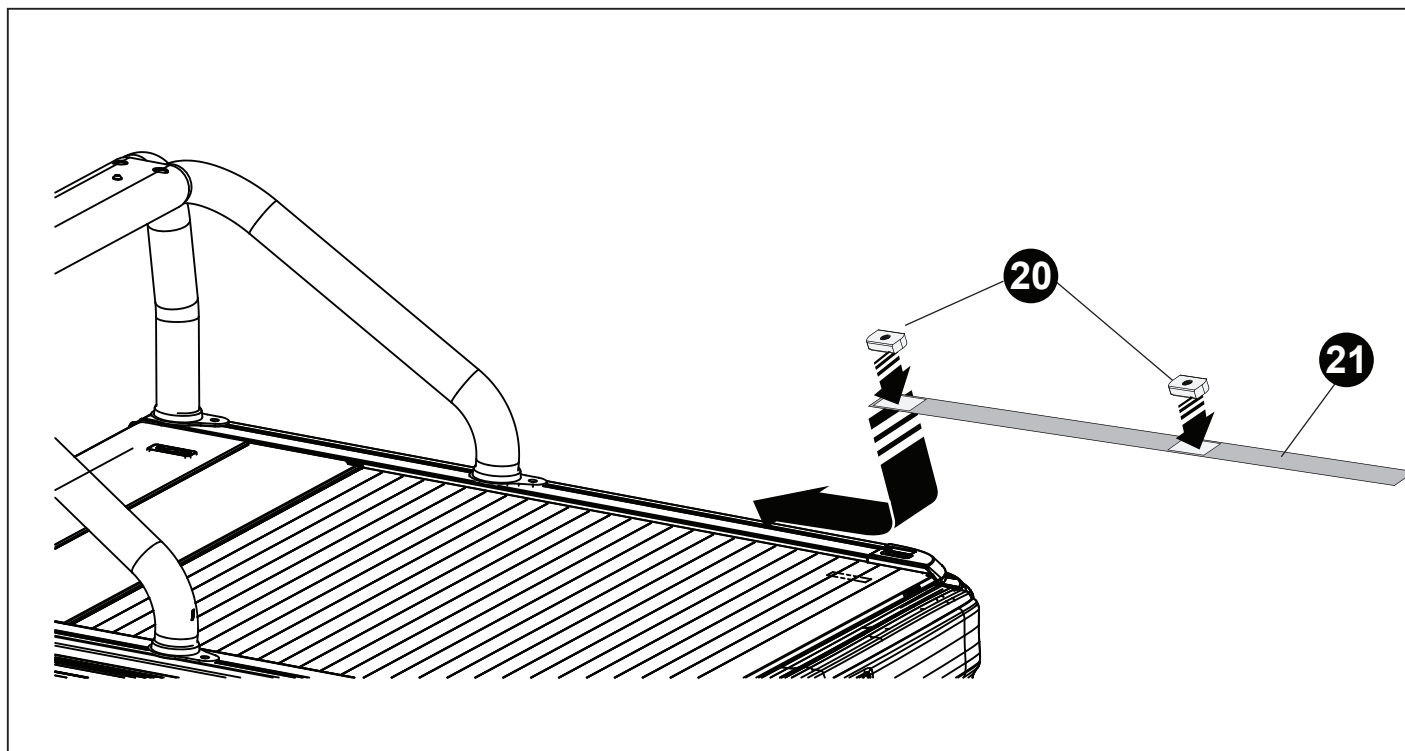
NOTE: If preferred, the Sportsbar may be removed from the vehicle to torque the screws.



11. Position the Sports Bar such that the Front Mount Bracket Plates align to the RollTrac side rail End Caps as shown.



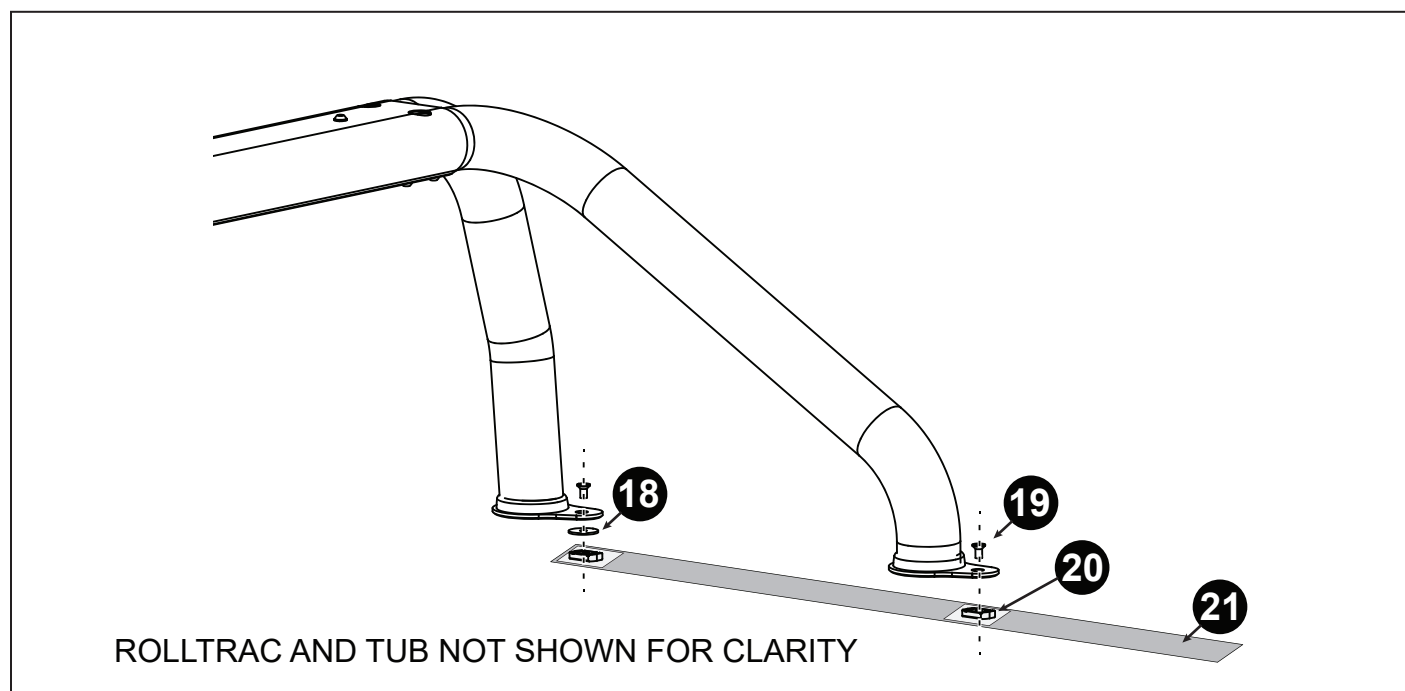
12. Slightly lift both front end legs of the Sportsbar and place the Large Washer (18) under the Front Mounting Brackets as shown. Ensure the Large Washer (18) hole aligns with the Front Mount Bracket holes and the side rail T-Channel.



13. Insert the Installation Aid (21) into the T-Channel of the RollTrac side rail. Slide two Slot Nuts (20) into the T-Channel and position them on top of the Installation Aid.

Note: The Installation Aid serves two purposes.

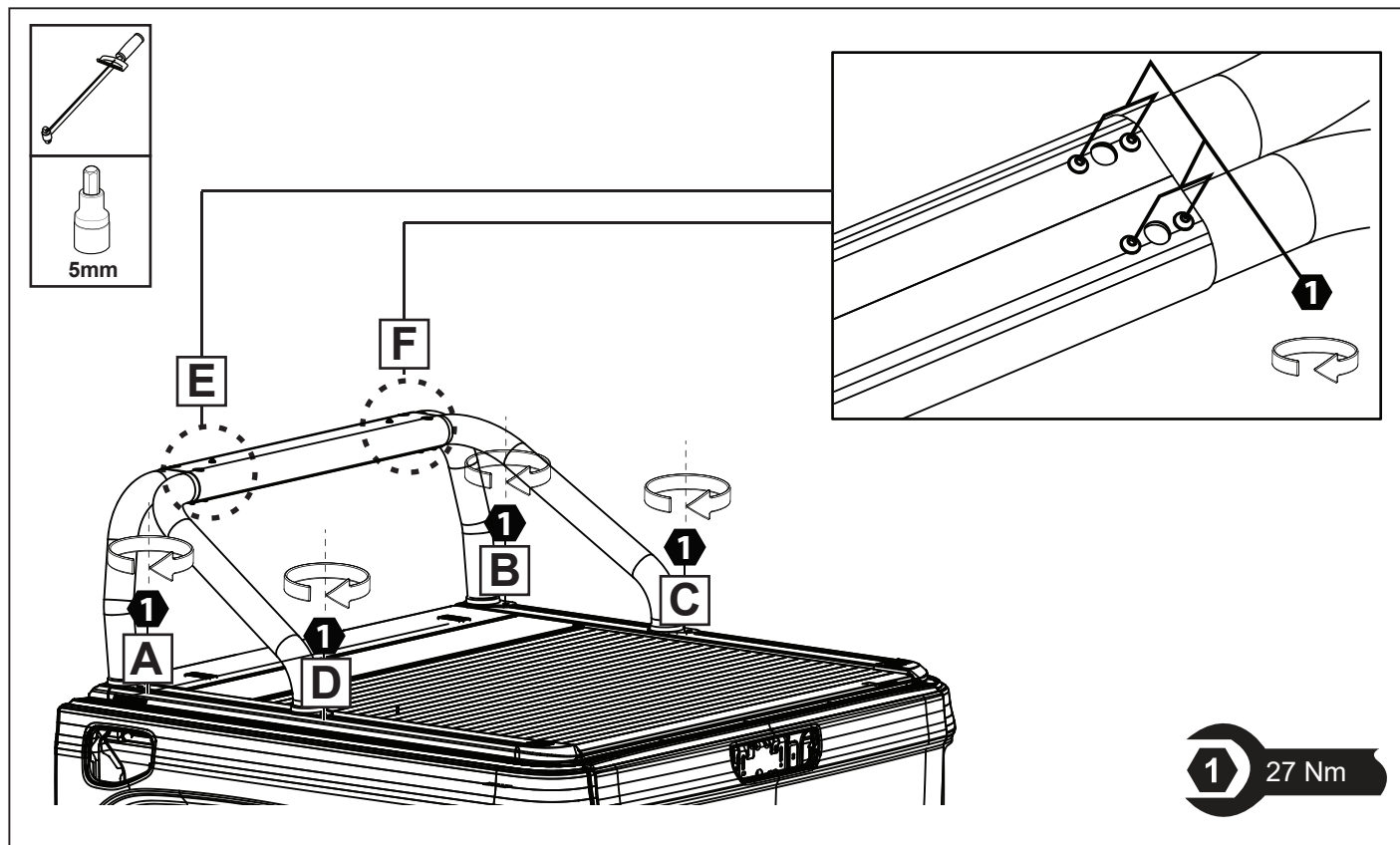
1. To assist in repositioning the Slot Nut under the Mount Plate.
2. Reduce the clearance between the Slot Nut and Mount Plate, ensuring the M8 x 16mm Countersunk Screw (19) is able to contact the Slot Nut thread.



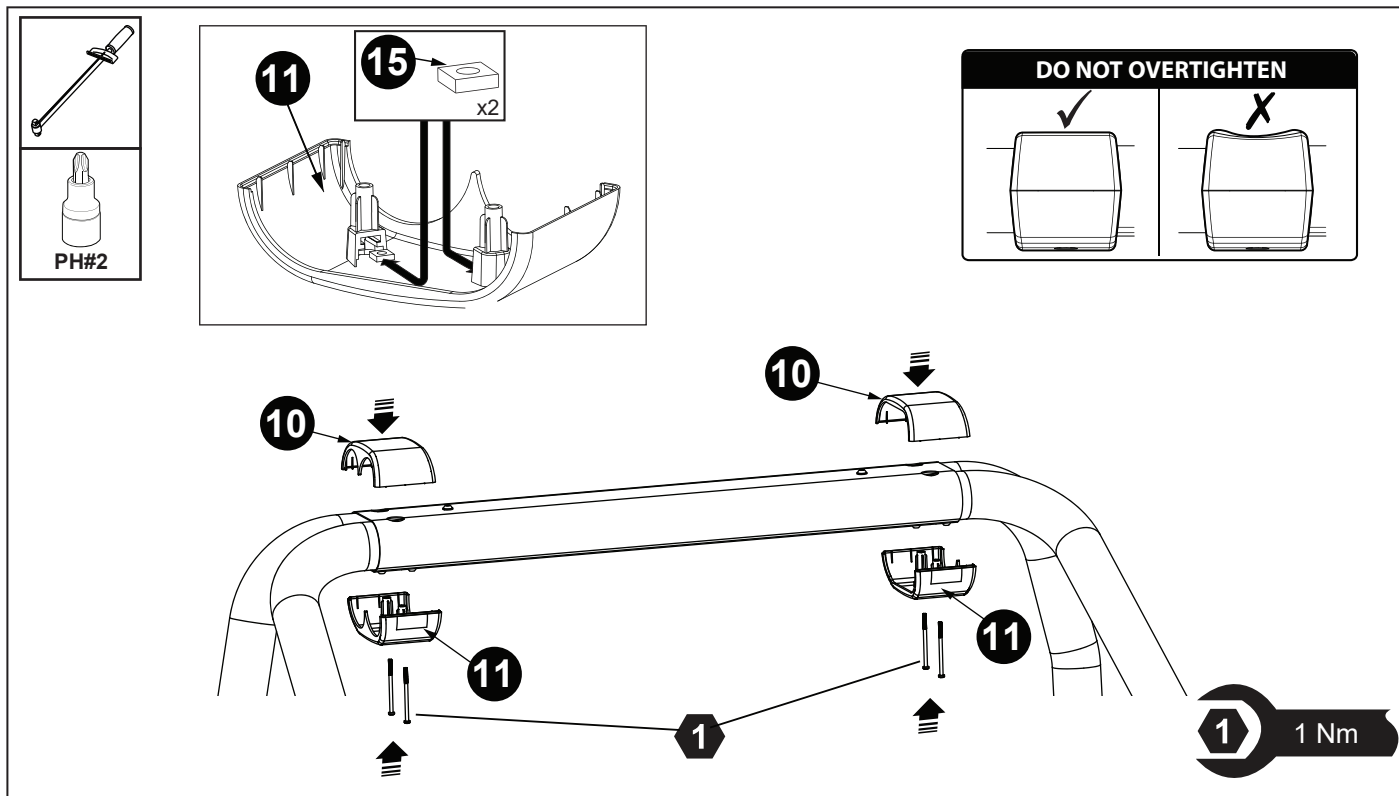
14. Reposition the Slot Nuts (20) inside the RollTrac side rail T-Channel using the Installation Aid (21) and align with the holes in the RHS Mount Brackets. Loosely install the M8 x 16mm Countersunk Screws (19) through the RHS Mount Brackets. Once both Screws are finger tightened, remove the Installation Aid (21) from the T-Channel and repeat for the LHS. Ensure the front Countersunk screw (19) passes through the Large Washer (18) as shown.

NOTE: The rear Mount Brackets and T-Channel should not have a Large Washer (18) installed.

NOTE: Rolltrac and tub not shown for clarity.



15. Tighten all M8 x 16mm Countersunk Screws (19) and M8 x 30mm Pan Head Screws (14). Follow carefully the order of torquing (A, B, C, D, E, F). Torque to 27Nm.



16. Insert M5 Square Nuts (15) into the Upper Cover Cap (10). Install the Cover Caps - Upper (10) and Lower (11) halves to the Centre Piece (9) and fasten together using M5 x 85mm Pan Head Screws (16). Torque the Screws to 1Nm. NOTE: Do not overtighten.