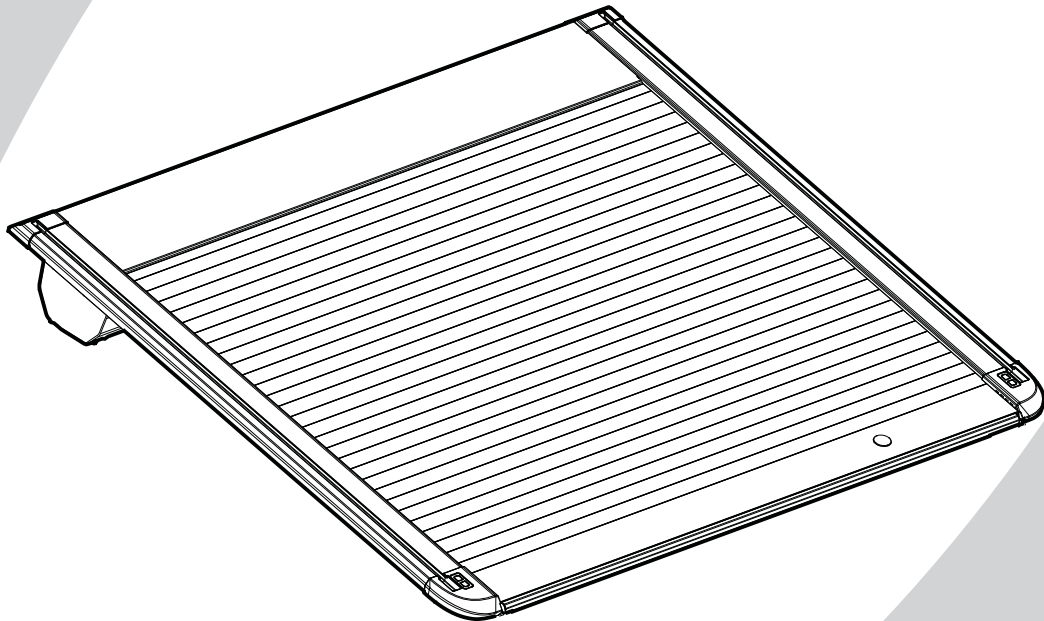


OWNER'S MANUAL

IMPORTANT: PLACE IN THE CUSTOMER'S VEHICLE SERVICE BOOK

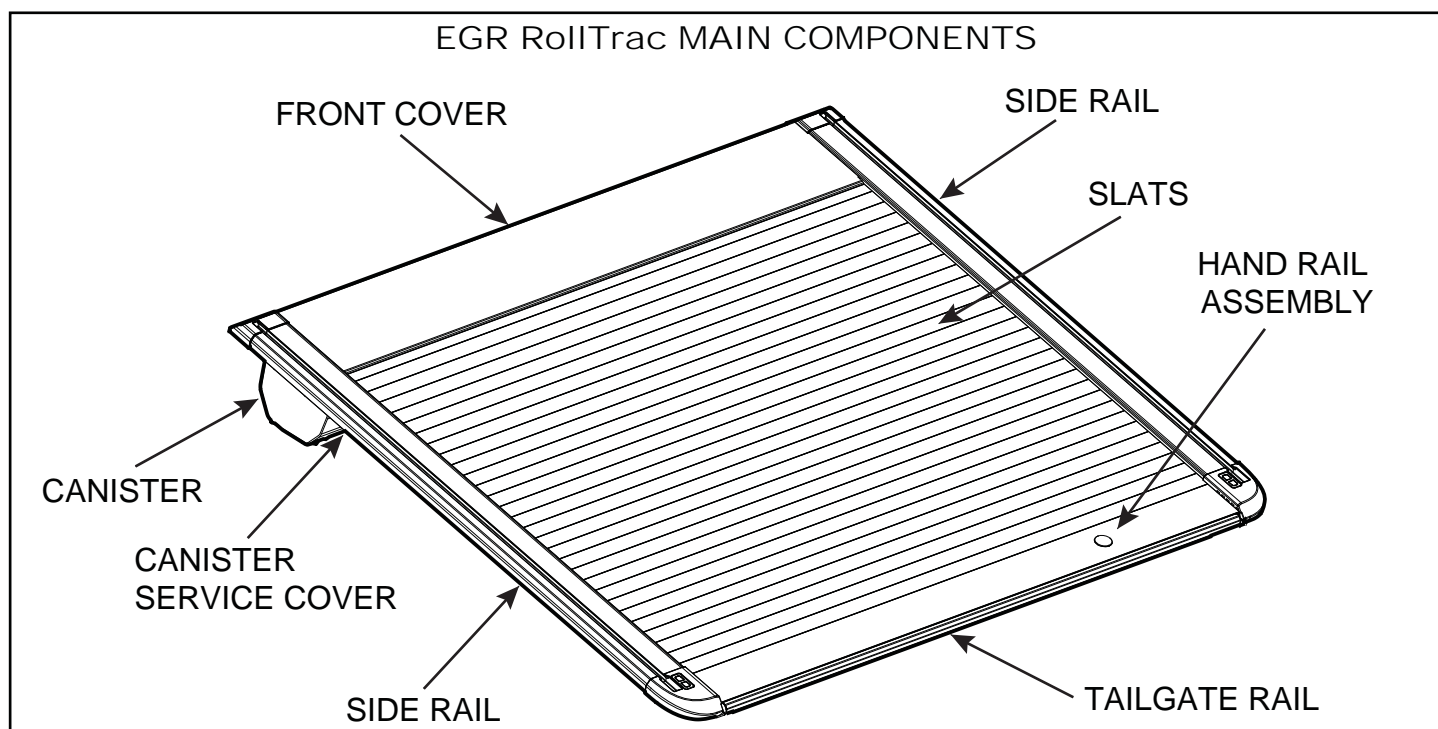
EGR ROLLTRAC

ELECTRIC



Contents.

EGR RollTrac main components.....	2
Introduction.....	2
Warnings - Safety.....	3
Maintenance.....	4
Warranty terms.....	4
Calibration procedure.....	5
Opening and closing procedure.....	6
Locking procedure.....	7
Interior light operation.....	8
Cleaning canister.....	8
FAQs.....	9
Trouble shooting.....	10-11
Installation checklist.....	12
Key identification code.....	12



Introduction.

Thank you for purchasing this EGR RollTrac.

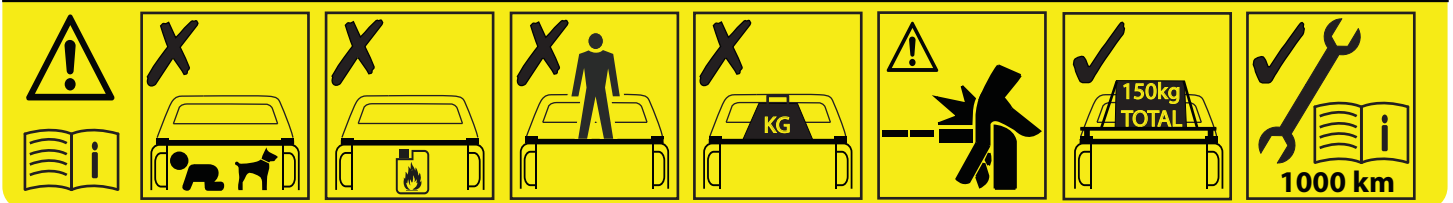
Read this owner's manual thoroughly before using this accessory and follow the instructions for use.

This product must be installed exactly as specified in the installation instructions. Failure to do so may result in improper fit and/or retention and loss of warranty.

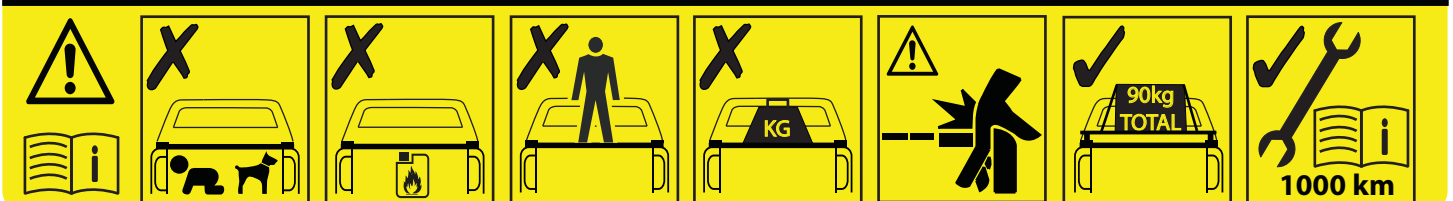
Warnings - Safety!

- Do not use the tub as a passenger compartment. In case of accidental entrapment, first disengage the motor by depressing the phosphorescent clutch release lever located near the motor housing (front of vehicle tub). Secondly twist the phosphorescent hand rail lock release located at the centre of the hand rail (rear of vehicle tub) - Cover will now retract.
- Do not store or transport volatile materials, such as solvents, chemicals or liquids as fumes may accumulate inside tub. Do Not allow solvents, chemicals or oils to come in contact with the EGR RollTrac. If this should occur clean the EGR RollTrac immediately with a mild detergent and water solution.
- Do not stand/sit or rest heavy objects on EGR RollTrac.
- Do not fill or store volatile liquid containers such as fuel cans while under the EGR RollTrac.
- VEHICLES FITTED WITH A BED LINER: Static electricity can cause fire when fuel is pumped into ungrounded fuel containers or equipment (eg: motorcycles, chainsaws etc..). Do Not fill fuel containers or equipment within the vehicle tray as static electricity can cause fuel to ignite, resulting in damage, injury or death. To avoid electricity build-up, place fuel container or equipment on the ground before filling.
- Do not drive the vehicle with the motor clutch disengaged – free moving roll cover may move causing injury or damage to property whilst driving.
- The cover is designed to be water and dust resistant in the majority of situations, in certain extreme environments a certain level of ingress is to be expected. Items that are of high value and are susceptible to water damage should be packaged accordingly. Condensation on the under side of the cover should be expected under certain conditions (cool days / nights).
- Do not subject the slats/hand rail to excessive open/close forces, excessive force may damage internal components replacement of which may not be covered in your warranty.
- While the EGR RollTrac has a built in safety feature to prevent damage and injury, you must keep obstructions clear of cover during opening/closing.
- To ensure your electric EGR RollTrac continues to operate in a trouble free manor we recommend to recalibrate the cover every 6 months. This interval may be reduced if you notice any irregularities when opening or closing the cover.
- Specific warning label can be found on the EGR RollTrac canister.

WARNING



WARNING



Maintenance.

- Your EGR RollTrac is designed for years of Maintenance free operation, however in certain conditions additional care may be required to ensure smooth operation. If the vehicle is driven in extreme conditions (hot/cold/dust) then maintenance intervals will have to be reduced.
- Regularly wash the cover, Only use mild detergents, liquid wax or general purpose cleaner to clean EGR RollTrac. Avoid the use of products containing alcohol as these can damage the painted surface.
- Do Not use abrasive compounds on painted or plastic finished cover surfaces.
- Only locks and lock recesses are to be lubricated with Graphite Powder. DO NOT use any other lubricants or oils. Using alternative products will VOID Warranty.
- It is recommended to check EGR RollTrac attachment clamps every 1000 km (more often in harsh driving conditions).
Clamp bolt recommended torque settings are specified in your EGR RollTrac installation instruction. If removed, bolts must have LOCTITE 243 re-applied and be re-tightened to specified values.
- Regularly open inspection covers and remove any debris from canister – hose with water to wash debris from canister and ensure water flows freely from drain tubes.
- Regularly inspect all four drain tubes for damage or splitting.
- Regularly clean side rail seal, side rail glide strips and canister drive plates with water and mild detergent.
- If you notice Slow, Heavy or Noisy operation of the cover firstly clean the externals of the EGR RollTrac (Slats, Side rails, Seals etc,) and the internals of the canister as described above. Allow product to dry thoroughly. With service covers open and slats in fully closed position apply a coat of plastic compatible 100% liquid silicon spray to the spiral shaped internals of canister endplates ONLY. Open and close the cover several times to ensure lubricant is dispersed over all moving parts. Refit service covers and recalibrate product if required. DO NOT use any other lubricants or oils. Using alternative products will VOID Warranty.

Warranty Terms.

This warranty only applies to the original purchaser and is non-transferable. Warranty must be claimed with original sales receipt for proof of purchase. EGR warrants that the EGR RollTrac will be free from defects in material and workmanship for a period of three (3) years from the retail date of purchase. Warranty claims are to be lodged via place of purchase.

Exclusions:

This warranty does not cover failure due to neglect, improper installation, including any modifications to installation hardware, alterations, addition of non genuine equipment, abuse, accident, normal wear and tear, lack of maintenance, misuse, and exposure to chemicals that are not safe for plastics or hardware components.

Incidental or consequential damage or loss of contents due to use, neglect, lack of maintenance, misuse of EGR RollTrac is sole responsibility of the vehicle owner and operator. Paint wear and panel damage due to (clamping / installation) on the vehicle bed can happen with EGR RollTrac and is the sole responsibility of the vehicle owner. Paint and panel damage to your vehicle is not covered under this warranty.

Disclaimer:

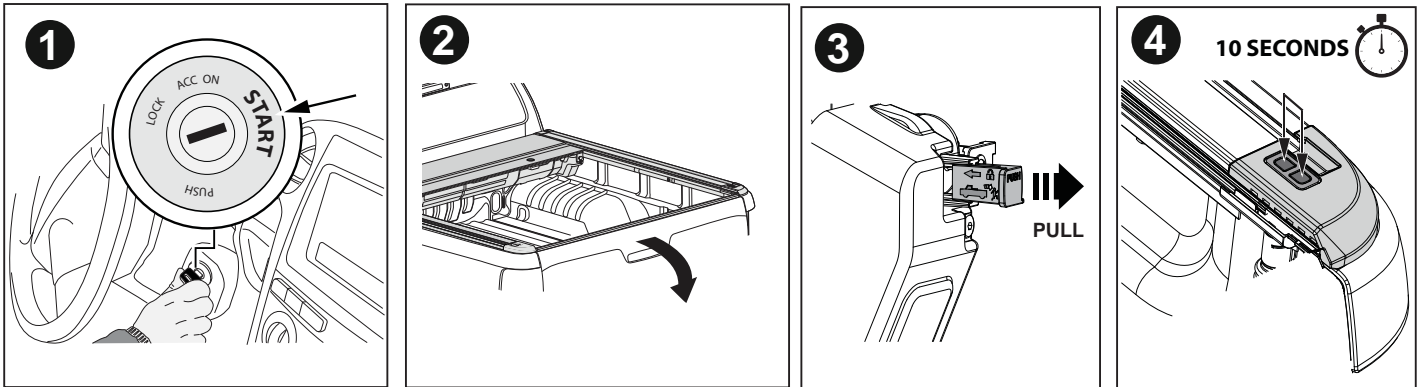
In the event that your EGR RollTrac is found to be defective under the terms of this warranty, it is at the discretion of EGR to repair or replace the defective part. Transportation costs and fitment labour are not associated with this warranty claim.

Calibration Procedure

1. Start the vehicle in an open area (note exhaust fumes are a health and safety hazard!).
2. Open the tailgate.
3. Ensure the motor clutch is engaged.
4. Ensure car doors are unlocked and disable auto-locking during calibration procedure.
Press the two side rail buttons simultaneously for 10 seconds to START calibration mode.

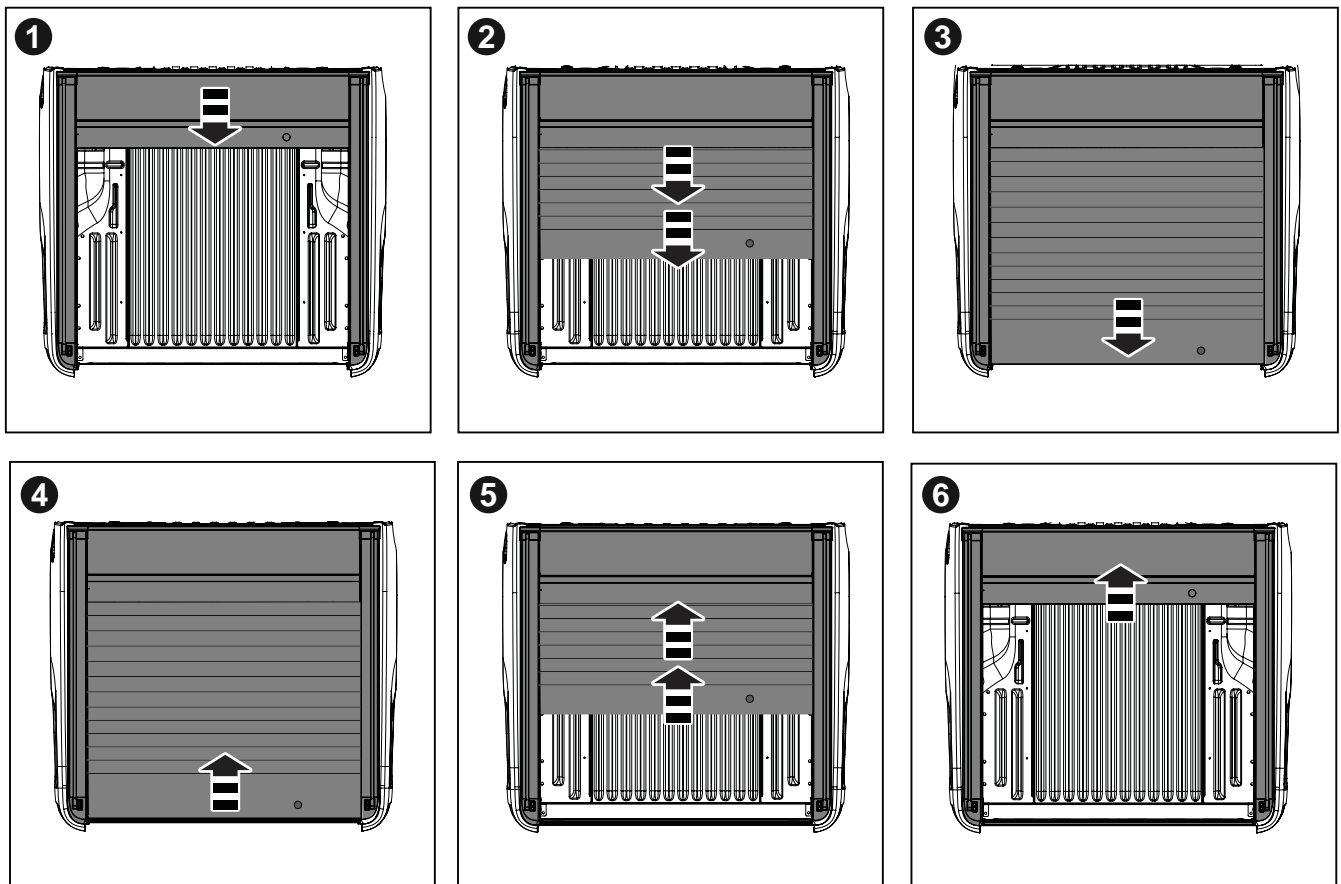


WARNING: Keep obstructions clear of cover during calibration mode.



- Cover will open and close twice automatically.
- The cover internal LED light will pulse slowly during calibration and stop pulsing when calibration is complete.

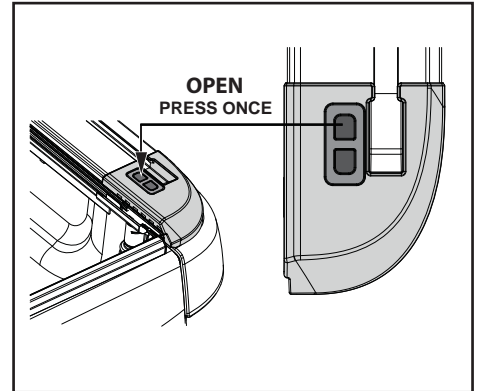
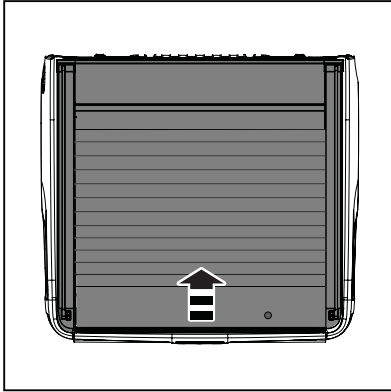
START OF CALIBRATION **2 SECOND PULSE DURING CALIBRATION**



END OF CALIBRATION

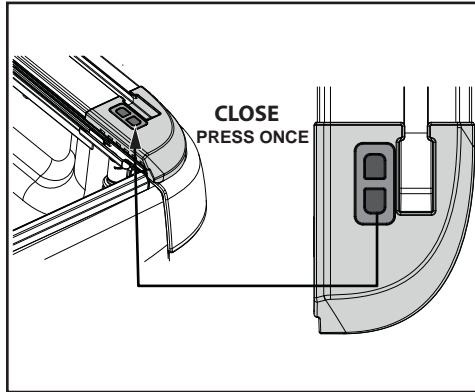
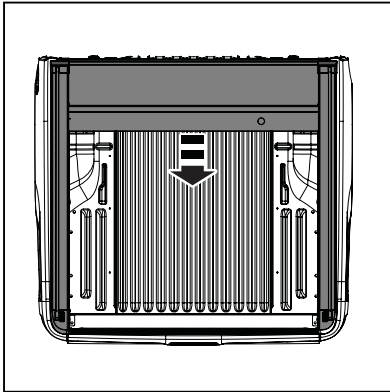
Opening and Closing Procedure

Electric Opening Procedure:



1. Press the "UNLOCK" button on the car remote.
2. Press the front button on the EGR RollTrac side rail as shown.

Electric Closing Procedure:



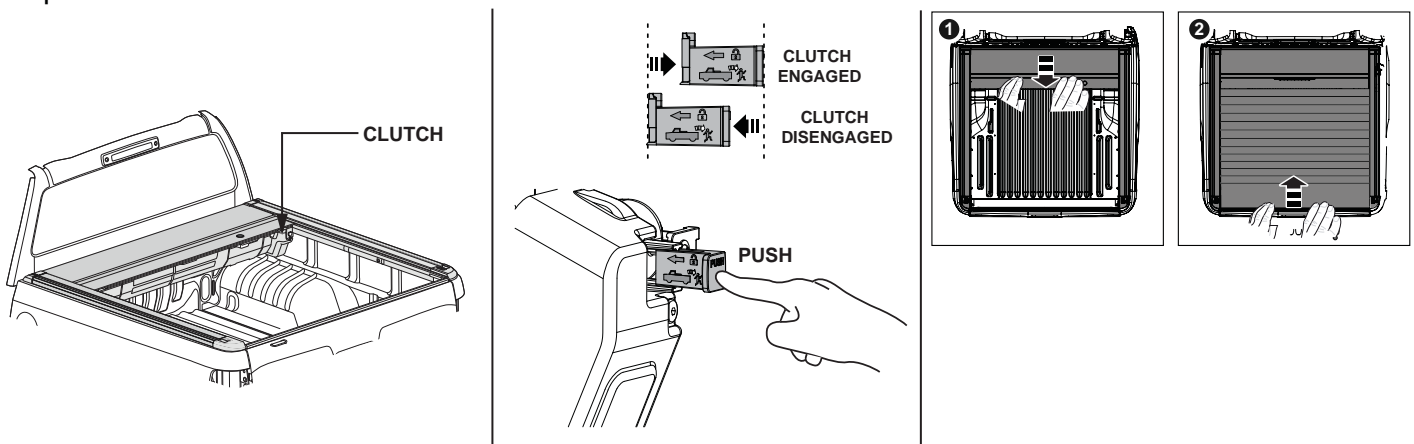
1. Press the rear button on the EGR RollTrac side rail as shown.
2. Press the "LOCK" button on the car remote.

NOTE: Cover should open and close smoothly. If cover does not lock or open correctly, please refer to the trouble shooting section.

Manual Opening and Closing Procedure:

Locate the Clutch Disengagement Lever on the RH side of the cover and push the Clutch inward to disengage the motor. Pull the cover rearward or forward as required. Before driving vehicle ensure you re-engage the clutch.

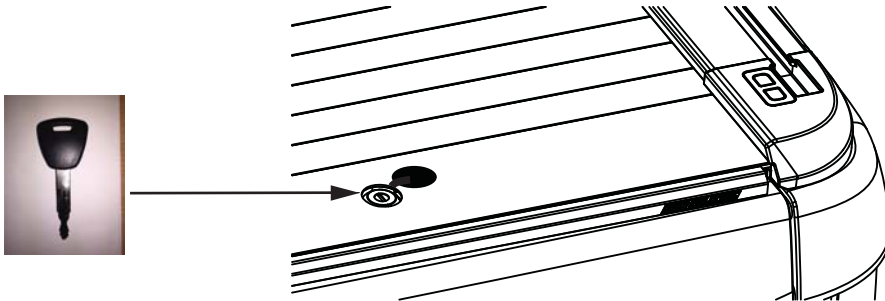
IMPORTANT: If clutch was disengaged, calibration procedure needs to be re-run prior to electric operation.



Locking Procedure

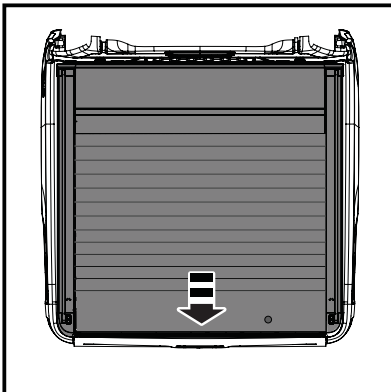
Manual locking / unlocking using key:

1. Ensure cover is fully closed.
2. Open the rubber cap covering the lock and using the provided key turn RIGHT to lock and LEFT to unlock the cover.
3. Check lock engagement by opening the tailgate, if lock does not engage recheck cover installation.



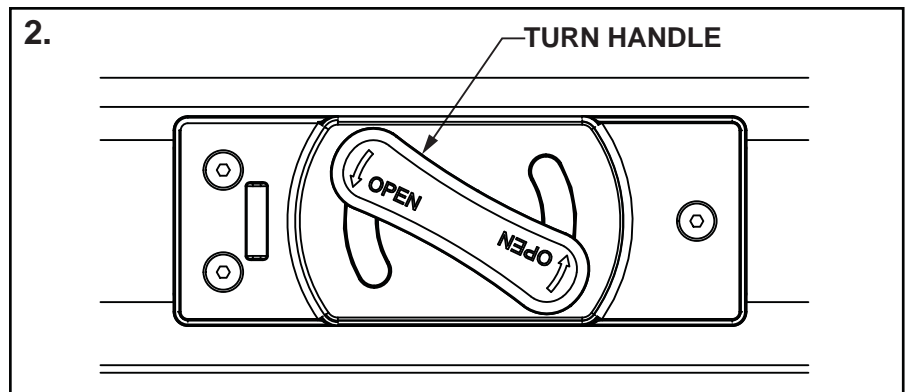
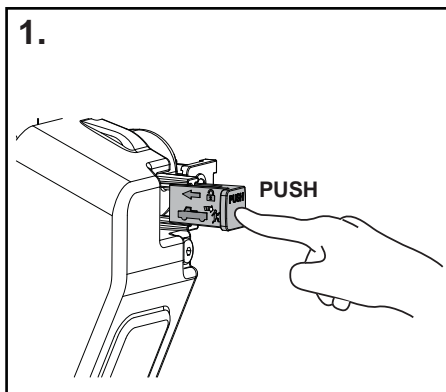
Electric locking / unlocking using key:

1. Ensure cover is fully closed.
 2. Lock or unlock the cover by using button on the key remote.
 3. Check lock engagement by opening the tailgate, if lock does not engage recheck cover installation
- NOTE:** If vehicle is locked, buttons are deactivated and cover will not open/close.
Lock latches will not activate until cover is in fully closed position.
Ensure to return tailgate to fully closed position prior to lock/unlock.



Emergency Opening:

1. In case of entrapment inside a locked vehicle tub fitted with EGR RollTrac, release the motor clutch by pushing in the Clutch Disengagement Lever (on the RH side of the cover).
2. Turn the emergency release handle located on the centre of the hand rail assembly and retract the slats manually.

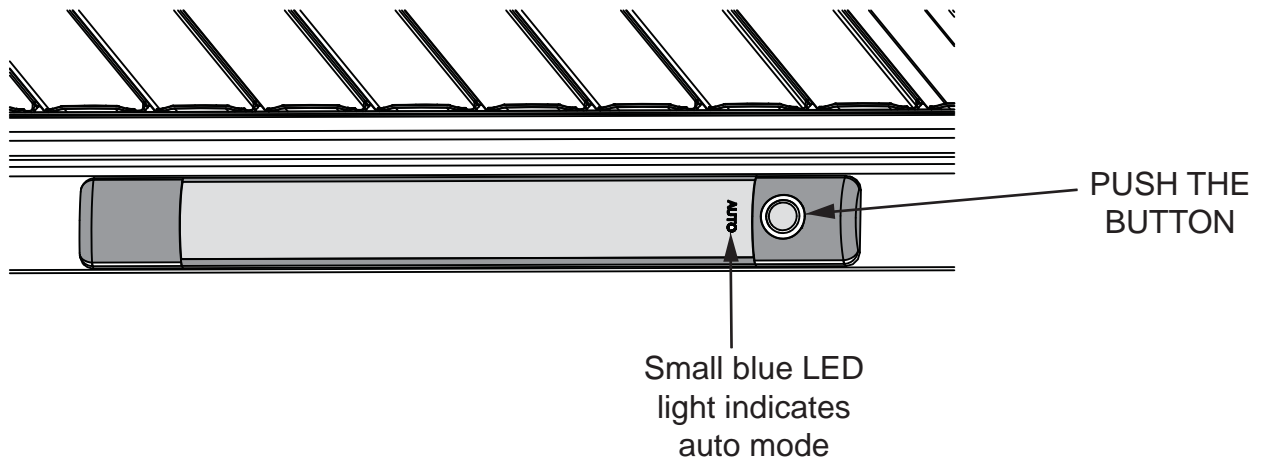


Interior Light:

The interior light has 3 settings activated by pushing the button on the side.

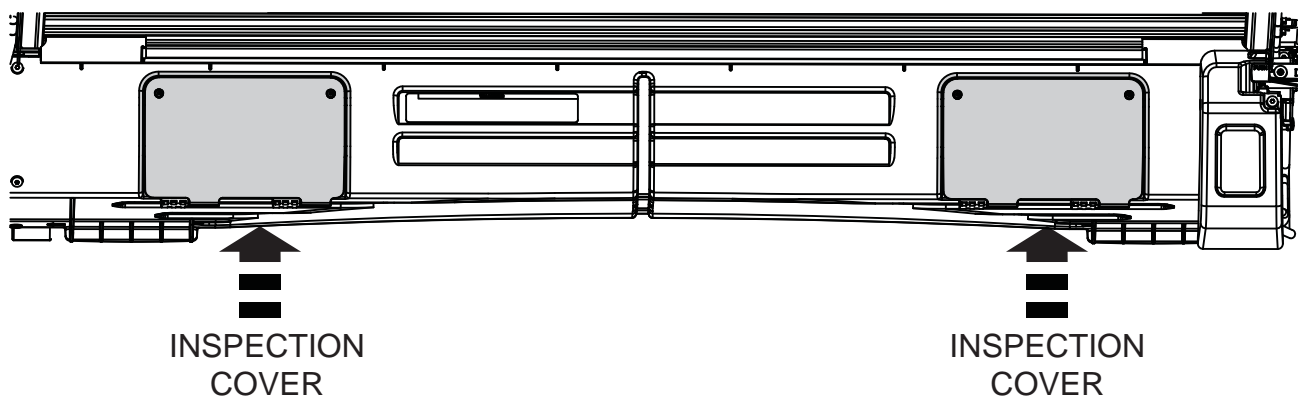
Each button press cycles from:

1. **AUTO** (default) which turns light off 2 mins after last button press.
2. **ON** - Light remains on for 20 mins
3. **OFF**



Cleaning the canister:

1. The canister has two or one (depending on model) inspection points for cleaning any leaves and debris collected inside the canister.
2. With the cover open, unscrew the screws holding the inspection cover to gain access to the canister.
3. Remove all larger debris and use a brush or hose with water to remove any small particles.



FAQ's:

Which EGR RollTrac accessories fit my vehicle?

All major racking brands will work on the EGR RollTrac. Rhino, Thule, Yakima, Rola, should all be able to adapt and integrate into our side rail channelling. Other accessories include EGR's own Sports Bar Adaptor Kits and Dust Defence Kits, as well as extra LED lighting.

What is the warranty period on EGR RollTrac?

We provide a 3-year limited warranty for the original consumer that warrants the product to be free from material or workmanship defects. Labour charges associated with removing or re-installing the product and parts are not covered with this warranty.

What do I do if I have a warranty issue with my EGR RollTrac?

In the instance of lodging a warranty claim, please return to the place of purchase or fitment, and lodge with them directly, as essentially, they sold you the product.

They will then claim on EGR.

EGR will request the following (perhaps provide it to your place of purchase to save processing time)

- Product & Part Number
- Description of the warranty issue
- Copy of original receipt
- Images of the issue and serial number label

What is the load capacity of EGR RollTrac?

EGR RollTrac has a top load capacity of between 90-150kg depending on your vehicle manufacturer, as shown on the yellow warning label on the EGR RollTrac.

Your load capacity is also affected by the racking accessories specified load capacity.

Are spare parts available for EGR RollTrac?

EGR have a range of service kits for interchangeable parts on EGR RollTrac.

Do I need to drill holes in the vehicle body when installing EGR RollTrac?

Whilst the EGR RollTrac fits to the vehicle using a clamp system, there is drilling required to fit the tailgate rail and drain tubes.

Can I install EGR RollTrac myself?

Yes, but please review the fitting instructions prior to ensure you have all the required skills and correct tooling to undertake the fitment. It is recommended to use an EGR Distributor for the fitment as they will have this tooling, and be fluent in our product range already.

Is EGR RollTrac compatible with tub liners?

Yes, with some modification required. Trimming requirements are explained in the fitting instructions for each product.

Can I download a copy of the EGR RollTrac fitting instructions?

Yes, find downloads and make contact with the EGR RollTrac customer service team via:

<http://www.egrrolltrac.com>

Trouble Shooting.

FAULT	ACTION
<p>EGR RollTrac does not operate when buttons pushed (opening or closing)</p>	<p>Check vehicle is unlocked.</p> <p>Ensure that cover is cleaned and lubricated as described in the owners manual maintenance section.</p> <p>Was Calibration run successfully? If not refer to calibration troubleshooting.</p> <p>Check for mechanical obstructions that prevent the slats running smoothly (check this by disengaging the emergency clutch release and manually opening and closing cover). Recalibrate afterwards.</p> <p>Do LED lights operate when button is pushed? If yes this indicates the unit has power, if no then recheck all battery and harness connections.</p> <p>Open inspection covers and remove any obstructions inside canister, hose with water to wash any smaller debris from canister, ensure water flows freely from drain tubes.</p> <p>If at closed position gently pull handrail back fully into rear corners and push the OPEN button.</p> <p>Manually lock and unlock using the key, recheck operation.</p> <p>Remove power (fuse) and wait for 5 sec. before applying power back to RollTrac and recalibrate.</p> <p>Error mode is indicated by flashing LED lights and loss of function mid operation, follow steps as outlined above.</p>
<p>EGR RollTrac is not running through complete calibration cycle (complete close and open x2)</p>	<p>Prior to calibration check cover operates manually (check this by disengaging the emergency clutch release and manually opening and closing cover), if cover does not operate check for mechanical obstructions and check installation as outlined in the Installation Instruction.</p> <p>Follow Calibration procedure, ensure tailgate is open and vehicle is parked on a level surface when running calibration.</p> <p>Check components for secure mounting, debris or damage.</p> <p>Do LED lights operate when the LED button is pushed? If yes this indicates the unit has power, if no then recheck all battery and harness connections.</p> <p>Ensure both buttons are depressed for the full 10 seconds, if calibration is not successful using buttons on one side of the vehicle then retry on the opposite side.</p> <p>Ensure tailgate is open and vehicle is parked on a level surface when running calibration.</p>
<p>Slat assy does not open/close smoothly or completely</p>	<p>Ensure that cover is cleaned and lubricated as described in the owners manual maintenance section.</p> <p>Cover must be recalibrated (to reset end stop locations) every time cover is operated manually / motor clutch is disengaged.</p> <p>Check that the hand rail has side to side movement in open / close position, if not check and adjust installation as outlined in the Installation Instruction.</p> <p>Ensure all foreign debris such as rocks, sand, leaves, frost or ice etc are not present on the top slat surface or in the side rail tracks.</p> <p>In frosty environments ice should be removed from the cover using cold water and a soft scraper prior to operation.</p> <p>Open inspection covers and remove any Debris from canister – hose with water to wash debris from canister and ensure water flows freely from drain tubes.</p>
<p>EGR RollTrac locking is not locking/unlocking tailgate</p>	<p>Check position of cover on tub (Vertical position of tailgate rail relative to handrail and front to back position of side rail rear corner blocks relative to tailgate rail) as outlined in the installation instruction.</p> <p>Check components for secure mounting, debris or damage.</p> <p>In certain cases vehicle tailgate may be too high relative to tub side rails. Cover can be lifted by application of additional layers of protective film along tub sides.</p> <p>With cover fully closed and tailgate down check operation of lock latches using key fob and key.</p>

Trouble Shooting continue.

FAULT	ACTION
Noisy operation	<p>Check all fasteners are torqued.</p> <p>Ensure EGR RollTrac is cleaned as per Maintenance instructions.</p> <p>Ensure all foreign debris such as rocks, sand, leaves etc are removed.</p> <p>After periods of non use the seals on your roll track may cause a thumping sound on first opening or closing - This is a function of the seal design and does not indicate a fault. Operation noise should return to normal after regular operation.</p>
Lights flicker with slow open/close	<p>Indicates low battery voltage, check battery condition.</p>
LED lights do not switch on/off	<p>If Roll Cover is operational - Check connections to LED light in side rail are pushed home.</p> <p>If EGR RollTrac is not operational – lighting is linked to installation of vehicle harness and connectors, troubleshoot and recheck operation.</p> <p>Check light operation in previous section of the Owners Manual.</p>
Dust ingress in tub	<p>From the factory vehicle tubs have various openings (to allow for water drainage etc). Ensure these openings are properly sealed to prevent dust ingress.</p> <p>Check all seals are present and undamaged.</p> <p>Ensure rubber drain tubes are properly seated to holes in tub.</p> <p>In certain cases (twisted tub) additional layers of foam tape may be required on the tub header rail to ensure a good seal.</p>
Water ingress in tub	<p>The cover is designed to be water resistant in the majority of situations, in certain extreme environments a certain level of water ingress is to be expected. Items that are of high value and are susceptible to water damage should be packaged accordingly.</p> <p>From the factory vehicle tubs have various openings (to allow for water drainage etc). Ensure these openings are properly sealed to prevent water ingress.</p> <p>Check all seals are present and undamaged.</p> <p>Ensure rubber drain tubes are properly seated to canister cover (twisting these tubes will ensure proper seating in canister body) tub and rear corner pieces.</p> <p>Ensure front drain tubes have been trimmed to suit tub/liner combination, if tubes are too long water flow may be reduced.</p> <p>In certain cases (twisted tub) additional layers of foam tape may be required on the tub header rail etc to ensure a good seal.</p> <p>Open inspection covers and check that front drain tubes are installed correctly, hose with water to wash any debris from canister and ensure water flows freely from drain tubes.</p>

Refer to your authorised EGR RollTrac dealer for further information.

Specifications are correct at time of printing and are subject to change without notice or obligation.

Installation Checklist.

INSTALLATION CHECKLIST

Dealer Name & Code:	Car Model and Rego:
	Vin No:
Order Date: Stock No:	EGR RollTrac Serial Number:
Required By:	EGR RollTrac - KEY ID CODE:
Vehicle Damage Check: Detail: _____	

Installation Checklist:	CHECK
1 RollTrac sealing evenly to tray/tub	
2 Position EGR RollTrac correctly relative to tailgate rail and cab	
3 Position EGR RollTrac on tub squarely and centrally	
4 Clamps are square and tight, torqued as specified in your EGR RollTrac installation instruction, side bolts and pads fitted.	
5 Check that the clutch release lever functions correctly (must be done prior to calibration)	
6 Water drainage pipes connected and in place (front and rear)	
7 Test that lock latches lock and unlock with tailgate down and also when tailgate is up	
8 Check cover moves from fully open to fully closed smoothly and quietly	
9 Check anti pinch operates correctly	
10 Check that emergency handle on hand rail opens lock latches correctly	
11 Ensure all accessories are fitted as per manufacturers recommendations	
12 Check LED lights operate	

Comments:

Fitted By:

Checked By:

Key Identification Code.

KEY IDENTIFICATION CODE

Please write the key identification code in the boxes above, and retain this copy with the vehicle service history. Replacement keys can be purchased from your local dealer.